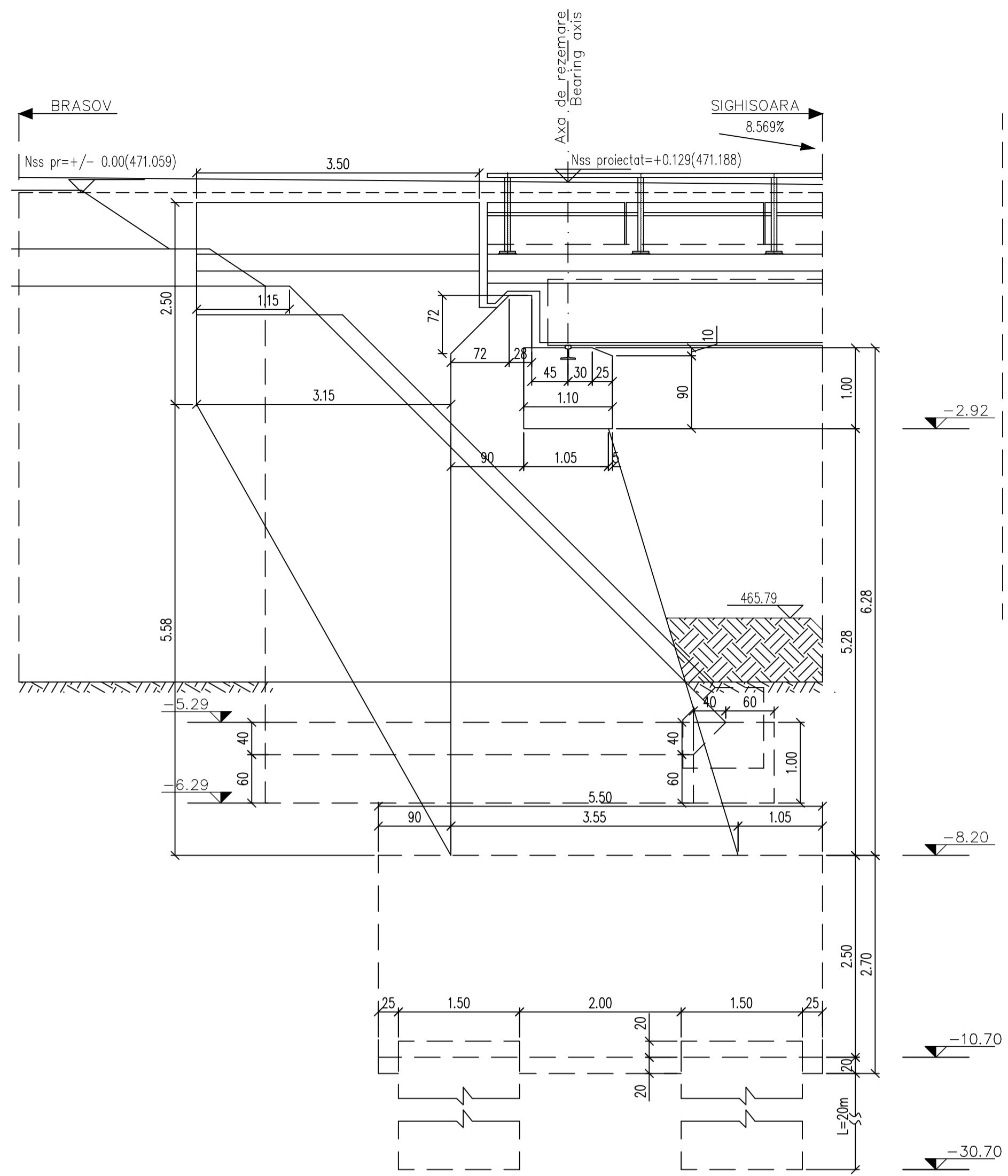
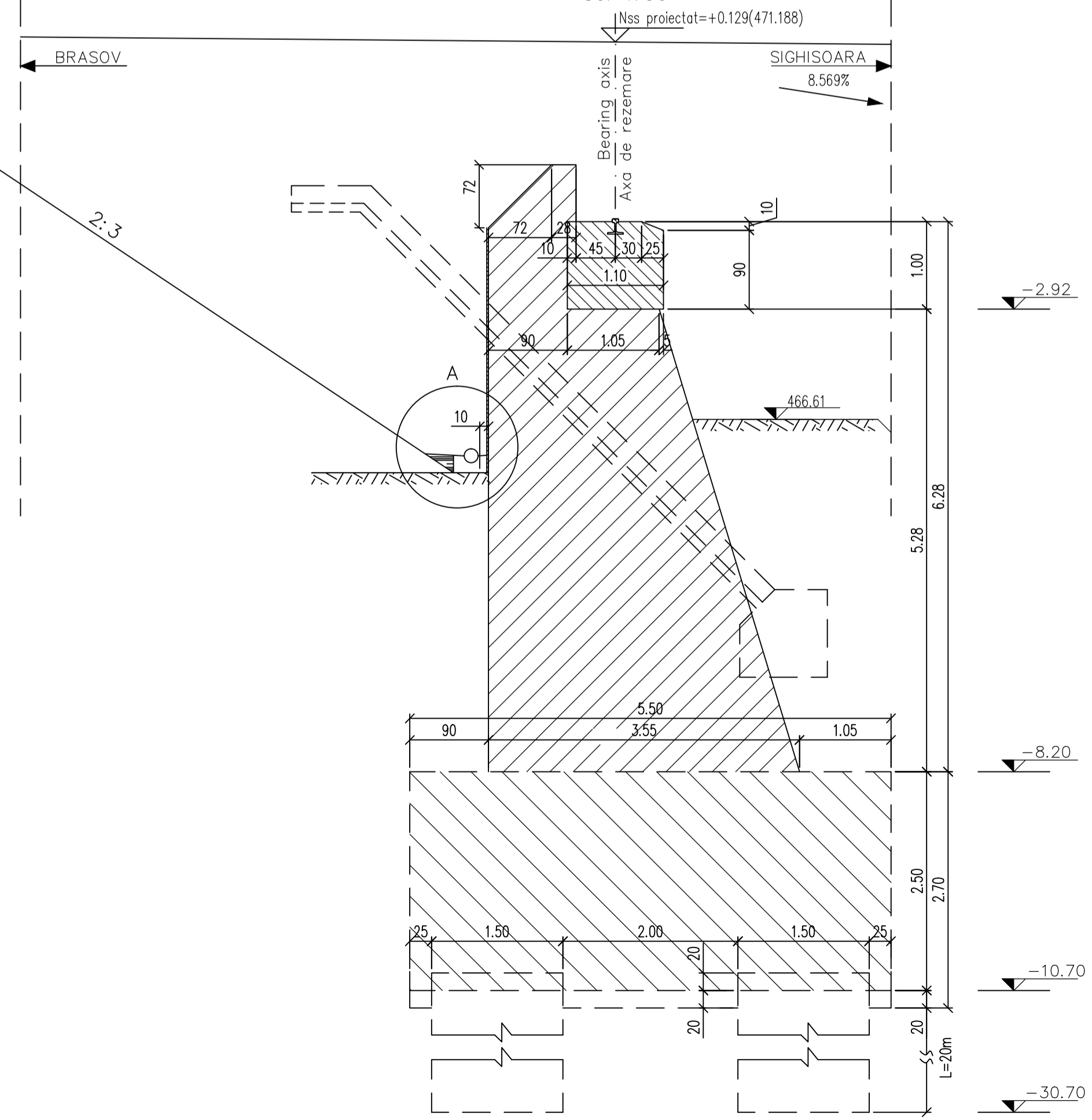


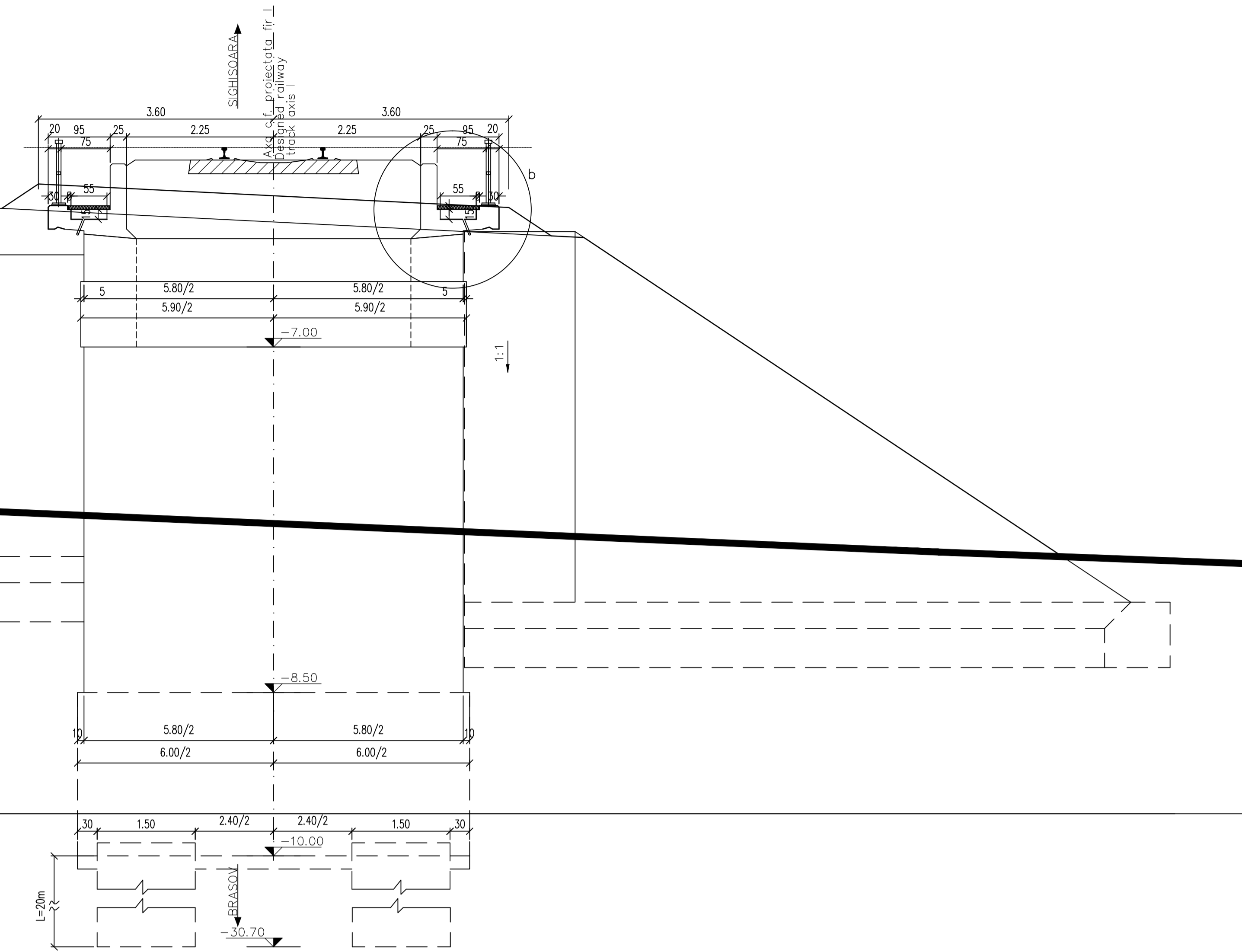
ELEVATIA A-A
A-A ELEVATION
Sc. 1:50



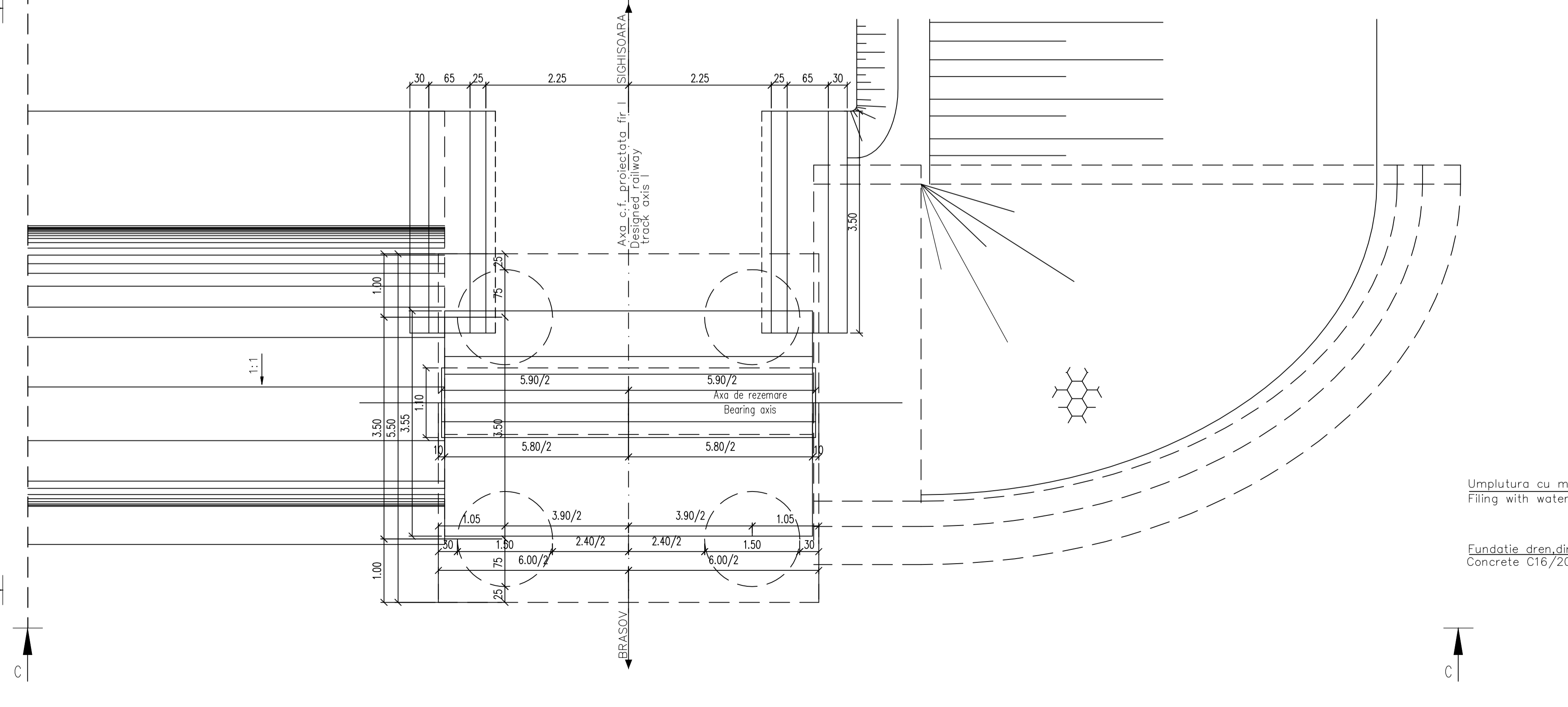
SECTIUNE D-D
D-D CROSS SECTION
Sc. 1:50



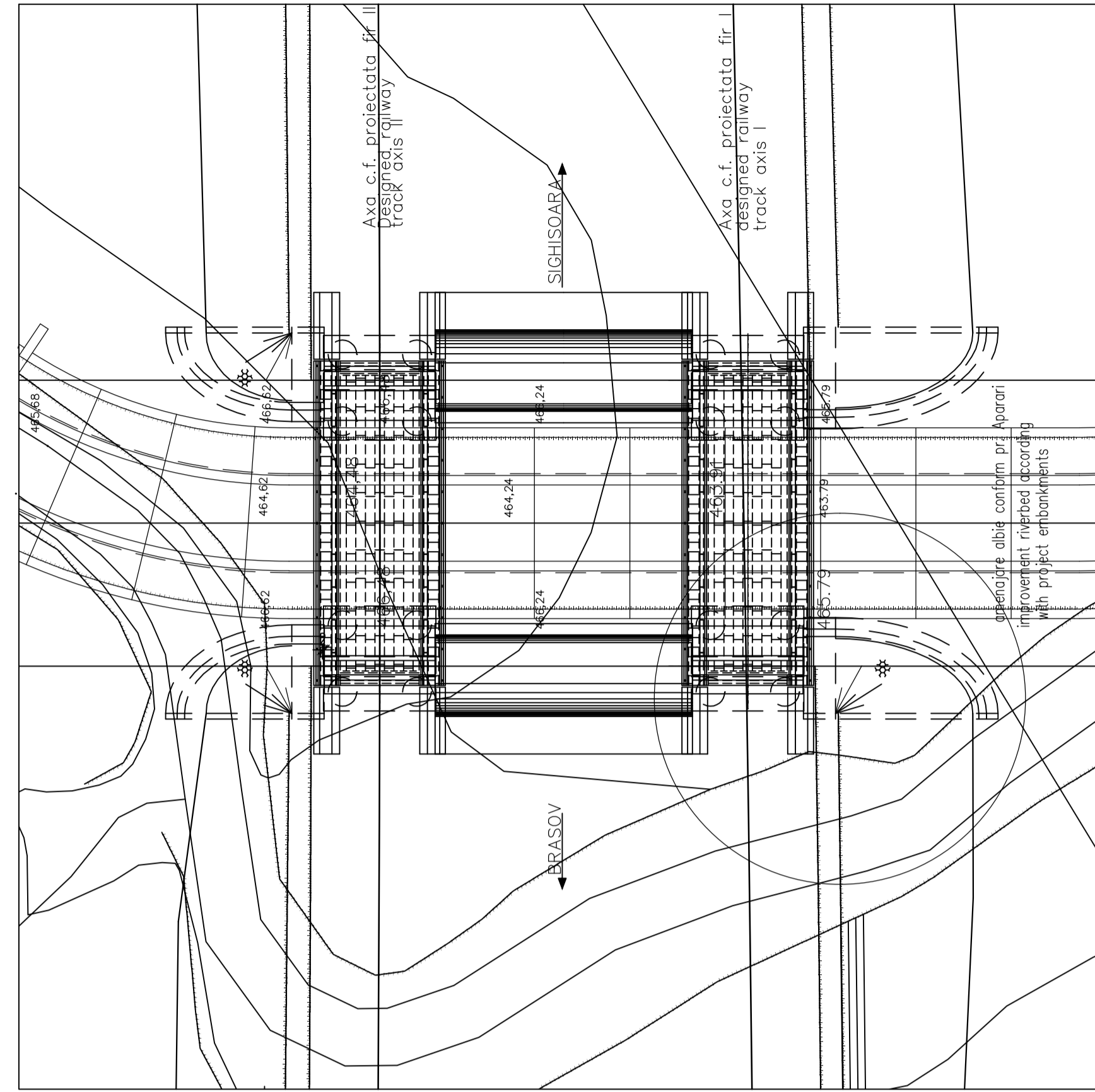
VEDERE C-C
C-C VIEW
Sc. 1:50
(Culeea "Brasov"/Brasov abutment)



VEDERE IN PLAN B-B
B-B PLAN VIEW
Sc. 1:50



PLAN AMPLASAMENT / SITE PLAN



Se interzice copierea, difuzarea, reproducerea sau utilizarea in alte scopuri, fara permisiunea ALEX LIDER COMPANY ca proprietar al desenului.
This drawing is forbidden to be copied, lent or used in other purposes than those previously approved by ALEX LIDER COMPANY as its owner.

In cazul in care temperatura in timpul lucrului este scazuta, se vor folosi cimenturile cu rezistenta initiala mara, R si aditivi acceleratori, iar in cazul lucrului pe timp cald, cimenturile cu rezistenta initiala uzada, N si aditivi intarziatori (conf. NE 012/2-2010 si tabelul 2 din SR EN 197-1:2002).
When the temperature during the casting is low, cements with high initial resistance, R and accelerating additives shall be used and when it is cold during warm weather, cements with common initial resistance, N and delaying additives shall be used (according to the norm NE 012/2-2010 and table 2 for the SR EN197-1:2002).

ATENȚIE / ATTENTION
Aprovizionarea aparatelor de reazem se va face inaintea executarii cuzinetilor si a banchetii acestora. In cazul in care inaltimea aparatelor de reazem aprovizionate difera fata de cea considerata in proiect se vor modifica inaltimele pe reazem corespunzator cu noile aparate.
The bearing blocks shall be supplied before building the bearings and their seats. In case the height of the supplied bearing blocks differs from that given in the project, the heights on the seats shall be adjusted so as to comply with the new devices.

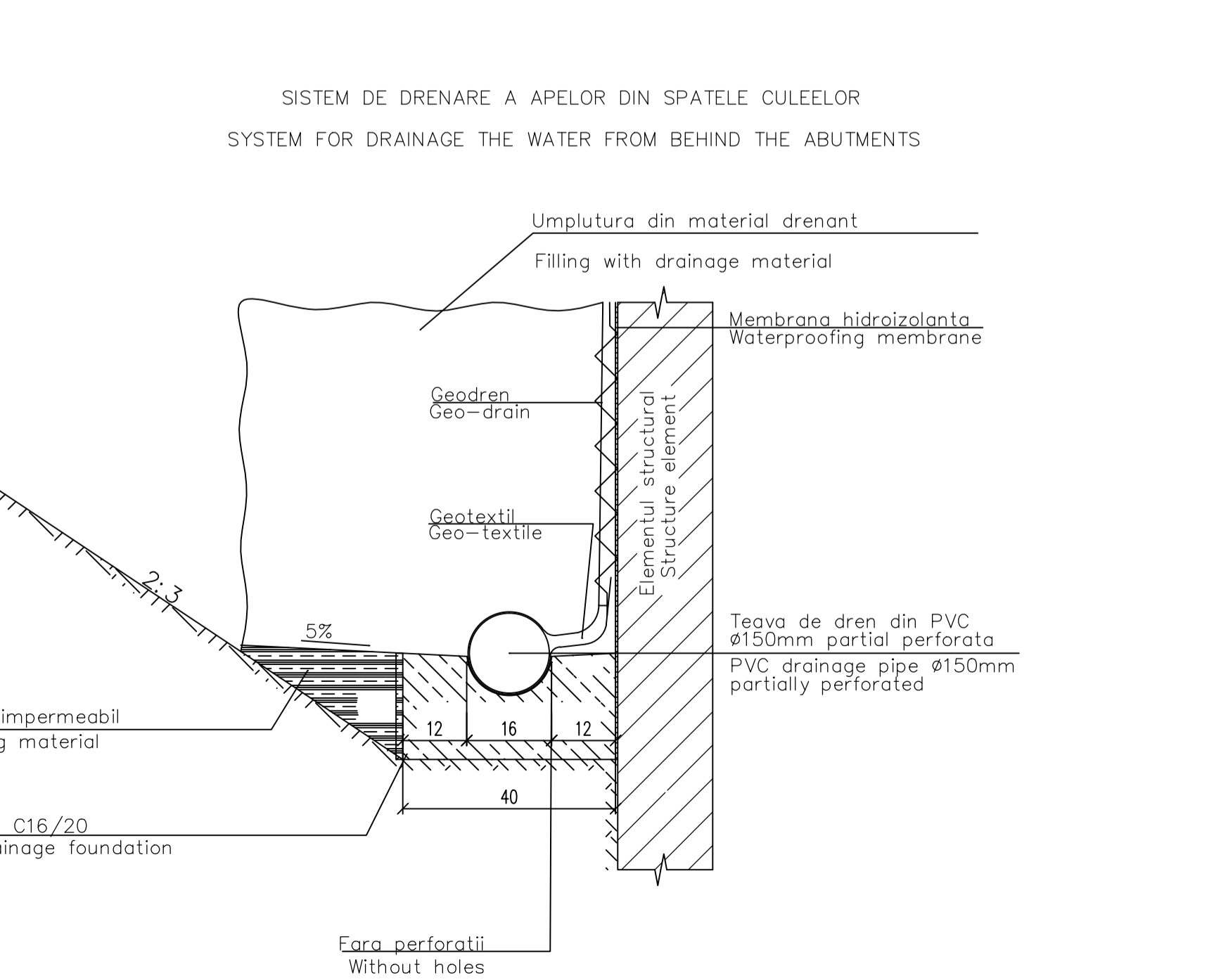
NOTA
1. Prezenta plan s-a intocmit in conformitate cu dispozitia generala.
2. Executia partilor superioare ale cuzinetilor, amplasate deasupra cuzinetilor, se va face numai dupa procurarea aparatelor de reazem. Nivelele superioare de cuzinetilor se vor stabili dupa procurarea aparatelor de reazem, in functie de inaltimea fiecarui tip de aparat.
3. La executie se vor respecta cu strictete prevederile din "Normativ pentru producerea betonului", indicativ NE 012/1-2007 si "Normativ pentru producerea betonului si executarea lucrarilor din beton, beton armat si beton precomprimat. Partea 2: Executarea lucrarilor din beton", indicativ NE 012/2-2010, iar verificarea calitatii lucrarilor si receptionarea lor se va face conform normativului C56-1985.
4. Constructia se incadreaza in categoria B de importanta. Constructii de importanta deosebita, modelul 1 de asigurare a calitatii conform HG 766/97.
5. Podul corespunde la convoiile de calcul UIC (LM7),SW/2).
6. Corectia albiei se va realiza conform proiect aparati.

NOTE
1. This plan has been drawn up according to the general layout.
2. The upper parts of the bearing placed over the bearing seat shall be built only after the procurement of the bearing blocks. The upper level of the bearings shall be established after the procurement of the bearing blocks depending on the height of the each bearing block type. The reverted walls and the guard wall shall be carried out after putting the desk on the supports.
3. The execution will strictly comply with the provisions of "Normative for concrete production NE 012/1-2007 and "Practice code for the concrete production and works execution, reinforced and pre-stressed concrete - Part 2: The execution of concrete works." NE 012/2-2010, and the quality and the reception of the works shall be made according to Norm C 56-1985.
4. The construction is classified in the B category of importance. Special importance constructions, model 1 for quality ensuring according to HG 766/97.
5. Bridge convays calculation corresponds to UIC (LM7),SW/2).
6. The correction of the river bed will be made according to the consolidation project.

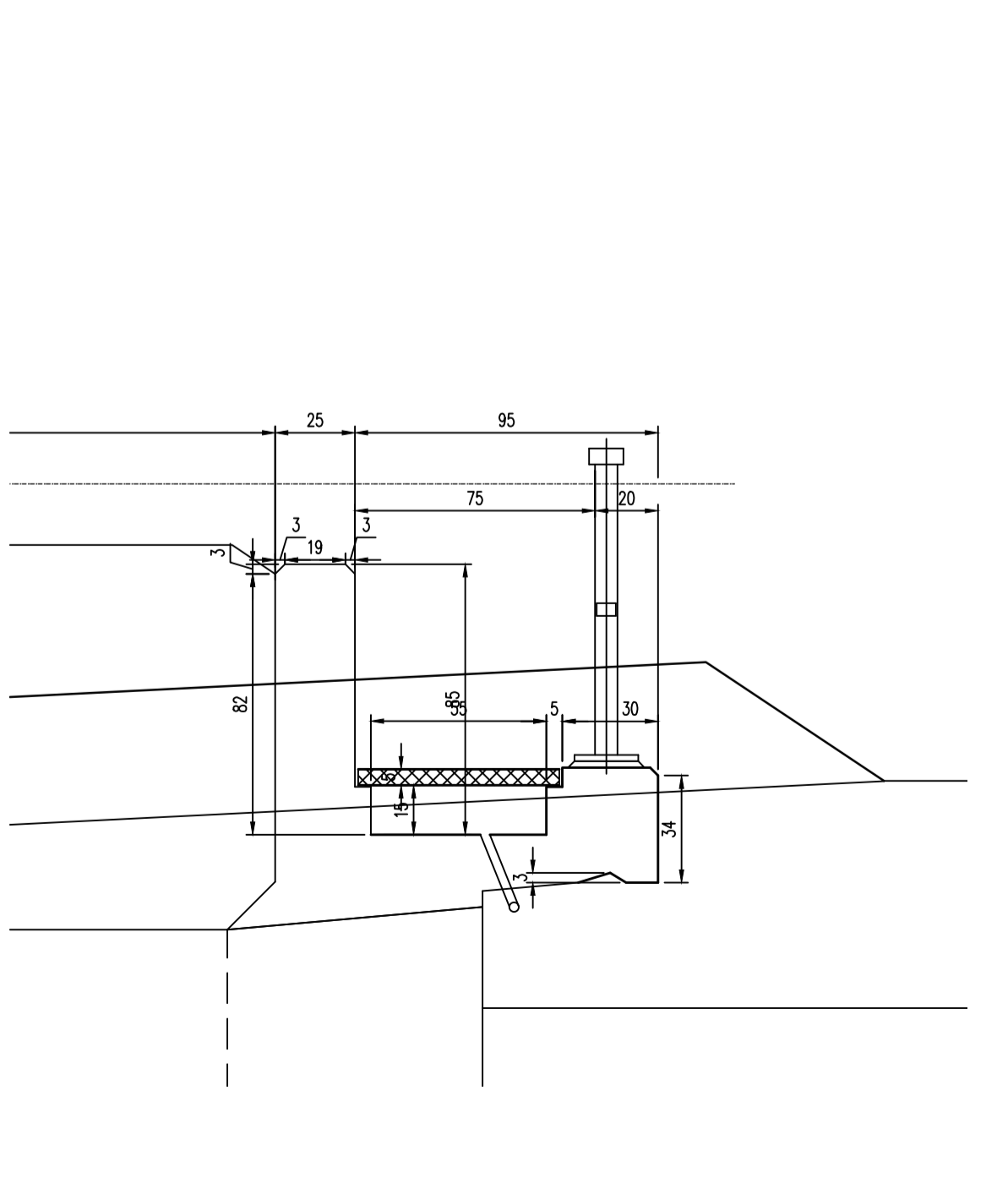
LEGENDA BETOANELOR/CONCRETE LIST

	Beton armat in elementele prefabricate Reinforced concrete in the prefabricated elements C35/45-CEM II/A-S 32,5-(XC4+XF3+XA2)-A/C=0,50-Dmax22-CI 0,20
	Beton simplu in fundatia elementelor prefabricate, in fundatia putului Plain concrete in the prefabricated elements, wing foundation and pit foundation C25/30-CEM II/A-S 32,5(XF1)-A/C=0,50-Dmax32-CI 0,20
	Beton simplu de panta si in pinter Plain concrete for slope and in the corbel C 25/30-CEM II/A-S 32,5-(XF3)-A/C=0,55-Dmax16-CI 0,20

DETALIUL "A"/DETAIL "A"
scara 1:20



DTALIUL "b"/„b" DETAIL
scara 1:20



C					
B					
A	11.2011	Reviza 1 1 Revision	Secu Andrei Razvan Designer	Proiectant Approved Consultant	Approbat CFR Approved CFR
Indice Index	Data Date	Modificari Modification/Revision	Proiectant Designer	Approbat Consultant Approved Consultant	Approbat CFR Approved CFR

GUVERNUL ROMANIEI
ROMANIAN GOVERNMENT

PROIECT FINANȚAT DE UNIUNEA EUROPEANĂ
EUROPEAN UNION FINANCED PROJECT

C.N.C.F. "C.F.R." - S.A.

CLIENT / CLIENT

ITALPER
GRUPUL FINANCIAR BELLIO STATO
Joint Venture leader

Scot Wilson
Joint Venture leader

BERMEYER
PLANEN + BERATEN GmbH

TECNIC
Consulting Engineers

CONSULTANT / CONSULTANT		Data	Semn tur
Approbat Approved	ef proiect Project manager	R. Liuzzi	Signature
Approbat Approved	Coordonator Site Section 1 Coordinator	C. Gambelli	
Verificat Checked	Expert Chief Key Expert	V. Kallidromitis	

SUBCONTRACTANT / SUBCONTRACTOR		Data	Semn tur
Approbat Approved	Responsabil Subcontractant Subcontractant Responsible	A. Dinulescu Stanciu	Signature
g & k & e Elaborat	Proiectant Designer	Secu Andrei Razvan	

Reabilitarea liniei de cale ferata de cale ferata de viteza maxima de 160 km/h, a coridorului IV Pan European, pentru circulaia in trenurilor cu viteza maxima de 160 km/h, Tronsoanel : Brasov - Sighisoara
Rehabilitation of the railway line Brasov - Simeria, component Part of the IV Pan-European Corridor, for the trans circulation with maximum speed of 160 km/h, Section : Brasov - Sighisoara

Proiect/Project
2004/RO/16/PPA/003

Faza / Phase:
P.Th. / T.D.

Denumire desen / Drawing Title : **INTERVAL / SECTION APATA - RACOS**
POD / BRIDGE Km 220+170.690 L=15,00m
PLAN COFRAJ CULEE BRASOV -POD FIR I /
/ BRASOV ABUTMENTS FORMWORK PLANE -TRACK I BRIDGE

Modificare / Codification System	Scara / Scale 1:50 / 1:20/1:5	LOT / LOT	Nr. / No 01 / 01
E A 5 1	0 1	E 1 0	B B P V 0 2 0 2 0 0 3 1