

Se interzice copierea, difuzarea, imprumutarea sau utilizarea in alte scopuri, fara permisiunea ARES LIDER COMPANY ca proprietar al desenului.
This drawing is forbidden to be copied, lent or used in other purposes than those previously approved by ARES LIDER COMPANY as its owner.

In cazul in care temperatura in timpul turnarii este scazuta, se vor folosi cimenturile cu rezistenta initiala mare, R si aditivii acceleratori, iar in cazul turnarii pe timp cald, cimenturile cu rezistenta initiala scazuta, N si aditivii intarziatori (conf. NE 012/2-2010 si tabelul 2 din SR EN 197-1:2002).
When the temperature during the casting is low, cements with high initial resistance, R and accelerating additives shall be used and when it is cast during warm weather, cements with common initial resistance, N and delaying additives shall be used (according the norm NE 012/2-2010 and table 2 for the SR EN197-1:2002).

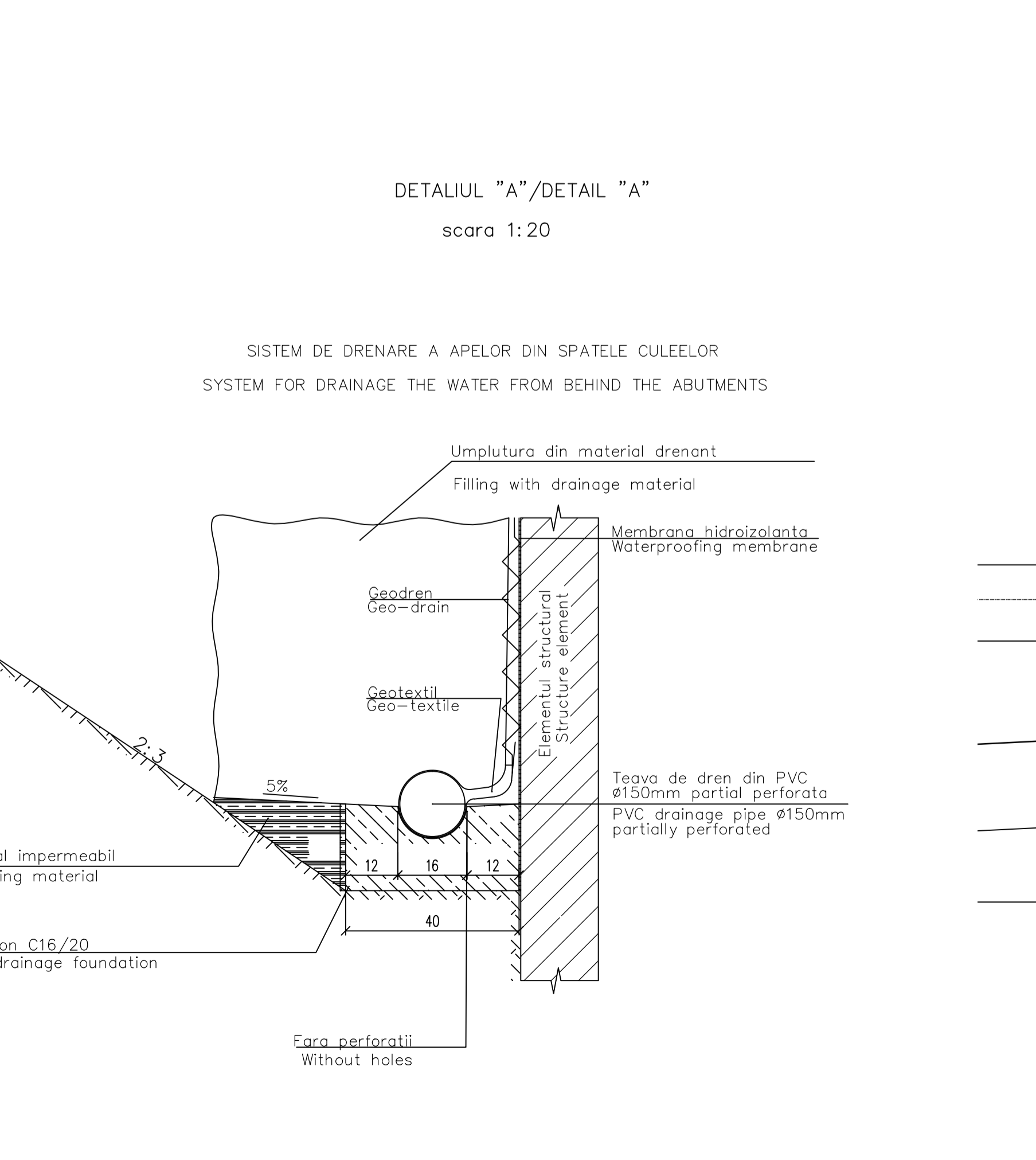
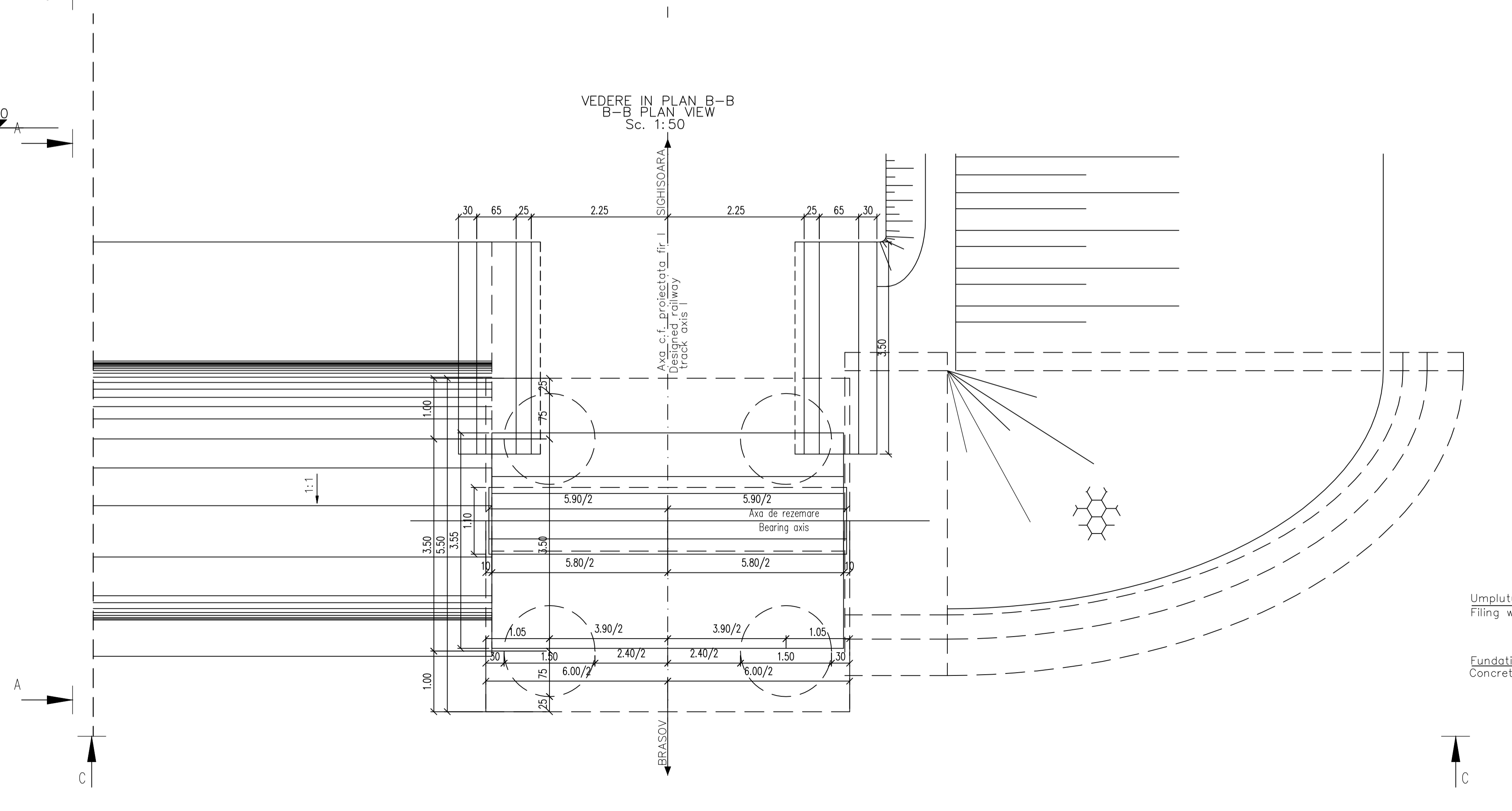
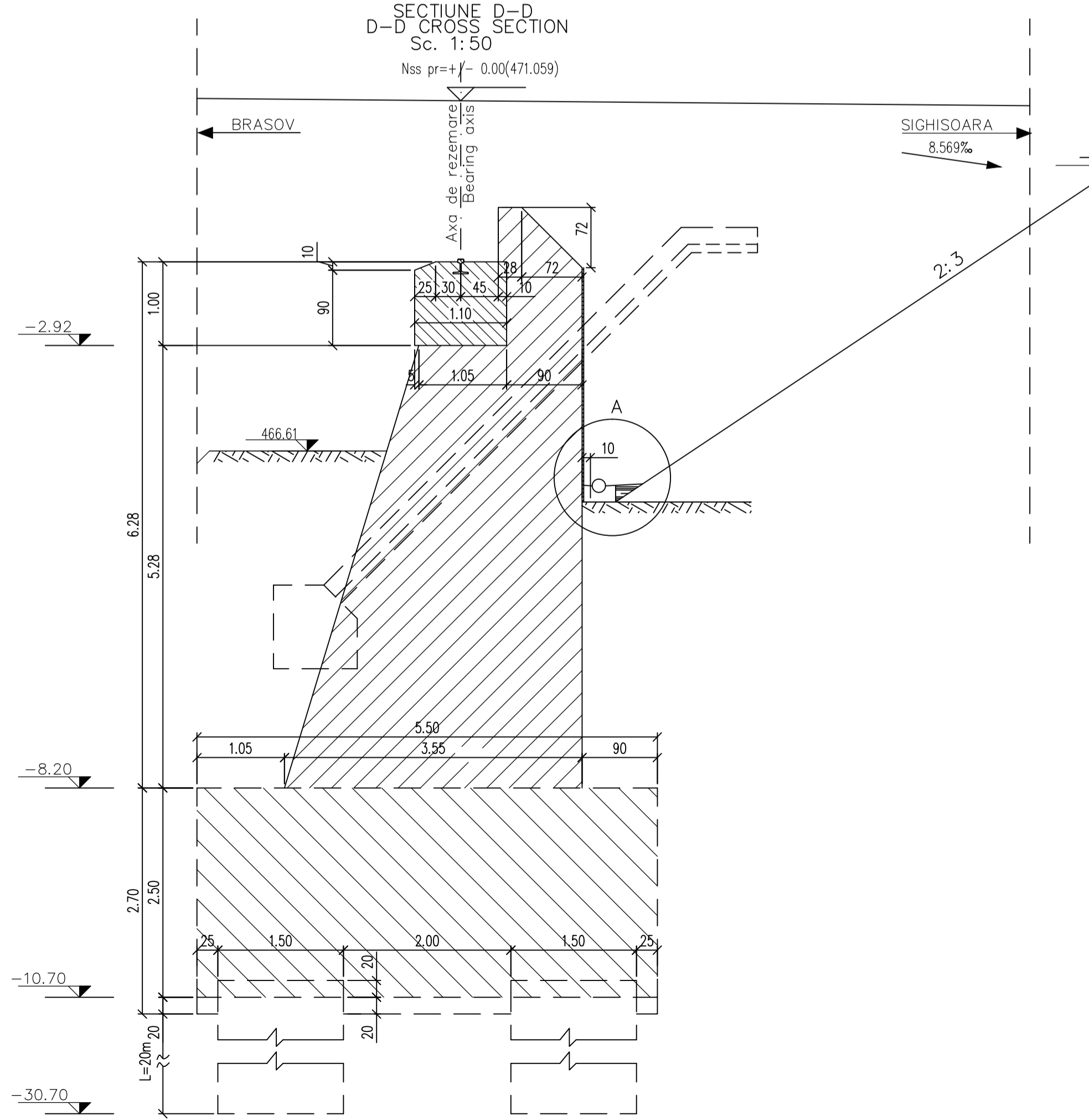
ATENȚIE / ATTENTION
Aprovizionarea aparatelor de reazem se va face inaintea executarii cuzinetilor si a banchetelor acestora. In cazul in care inaltimea aparatelor de reazem aprovizionate difera fata de cea considerata in proiect se vor modifica inaltimele pe reazem corespunzator cu noile aparate.
The bearing blocks shall be supplied before building the bearings and their seats. In case the height of the supplied bearing blocks differs from that given in the project, the heights on the seats shall be adjusted so as to comply with the new devices.

NOTA
1. Prezentul plan s-a intocmit in conformitate cu dispozitia generala.
2. Executia partilor superioare ale cuzinetilor, amplasate deasupra banchetelor cuzinetilor, se va face numai dupa procurarea aparatelor de reazem.
Nivelele superioare ale cuzinetilor se vor stabili dupa procurarea aparatelor de reazem, in functie de inaltimele fiecarui tip de aparat.
Executia zidurilor intarsoare si a zidului de garda se va face dupa asezarea tablariului pe reazeme.
3. La executie se vor respecta cu strictete prevederile din "Normativ pentru producerea betonului", indicativ NE 012/1-2007 si "Normativ pentru producerea betonului si executarea lucrarilor din beton, beton armat si beton precomprimat. Partea 2: Executarea lucrarilor din beton", indicativ NE 012/2-2010, iar verificarea calitatii lucrarilor si receptionarea lor se va face conform normativului C56-1985.
4. Constructia se incadreaza in categoria B de importanta. Constructii de importanta deosebita, modelul 1 de asigurare a calitatii conform HG 766/97.
5. Podul corespunde la convosiotea de calcul UIIC (LM71,SW/2).
6. Corectia obicei se va realiza conform proiectului.

NOTE:
1. This plan has been drawn up according to the general layout.
2. The upper parts of the bearing placed over the bearing seat shall be built only after the procurement of the bearing blocks, the upper level of the bearings shall be established after the procurement of the bearing blocks depending on the height of the each bearing block type. The reverted walls and the guard wall shall be carried out after putting the desk on the supports.
3. The execution will strictly comply with the provisions of "Normative for concrete production NE 012/1-2007 and "Practice code for the concrete production and works execution, reinforced and pre-stressed concrete - Part 2: The execution of concrete works." NE 012/2-2010, and the quality and the reception of the works shall be made according to Norm C 56-1985.
4. The construction is classified in the B category of importance. Special importance constructions, model 1 for quality ensuring according to HG 766/97.
5. Bridge convey calculation corresponds to UIIC (LM71,SW/2).
6. The correction of the river bed will be made according to the consolidation project.

LEGENDA BETOANELOR/CONCRETE LIST

	Beton armat in elementele prefabricate Reinforced concrete in the prefabricated elements C35/45-CEM II/A-S 32,5-(XC4+XF3+XA2)-A/C=0,50-Dmax22-Cl 0,20
	Beton simplu in fundatia elementelor prefabricate ,in fundatia arilor si in fundatia putului Plain concrete in the prefabricated elements ,wing foundation and pit foundation C25/30-CEM II/A-S 32,5(XF1)-A/C=0,50-Dmax32-Cl 0,20
	Beton simplu de panta si in pinter Plain concrete for slope and in the corbel C 25/30-CEM II/A-S 32,5-(XF3)-A/C=0,55-Dmax16-Cl 0,20



DTALIUL „b” / „b” DETAIL scara 1:20

CLIENT / CLIENT
 ROMANIAN GOVERNMENT
 EUROPEAN UNION FINANCED PROJECT
 C.N.C.F. "C.F.R." - S.A.

CONSULTANT / CONSULTANT
 ITALFERR
 Scott Wilson
 OBERMEYER PLANEN + BERATEN GmbH
 TECNIC Consulting Engineers

Index	Date	Modification	Projector	Approved	Approved
A	11.2011	Revizua 1 / Revision	Secu Andrei Razvan / Projectant	Secu Andrei Razvan / Projectant	Secu Andrei Razvan / Projectant
B					
C					

REABILITAREA LINIEI DE CALE FERATA (Calea Ferata) c. a. coridorului IV Pan European, pentru circulatia trenurilor cu viteza maxima de 160 km/h, Tronsoanel - Brasov - Sighisoara
Rehabilitation of the railway line Brasov - Simeria, component Part of the IV Pan-European Corridor, for the trains circulation with maximum speed of 160 km/h, Section : Brasov - Sighisoara

Denumire desen / Drawing Title : INTERVAL / SECTION APATA - RACOS POD / BRIDGE Km 220+170.690 L=15,00m

PLAN COFRAJ CULEE SIGHISOARA - POD FIR I / SIGHISOARA ABUTMENTS FORMWORK PLANE - TRACK I BRIDGE

Codificare / Codification System: EA51 01 E 10 B B PV 02 0 2 005 1