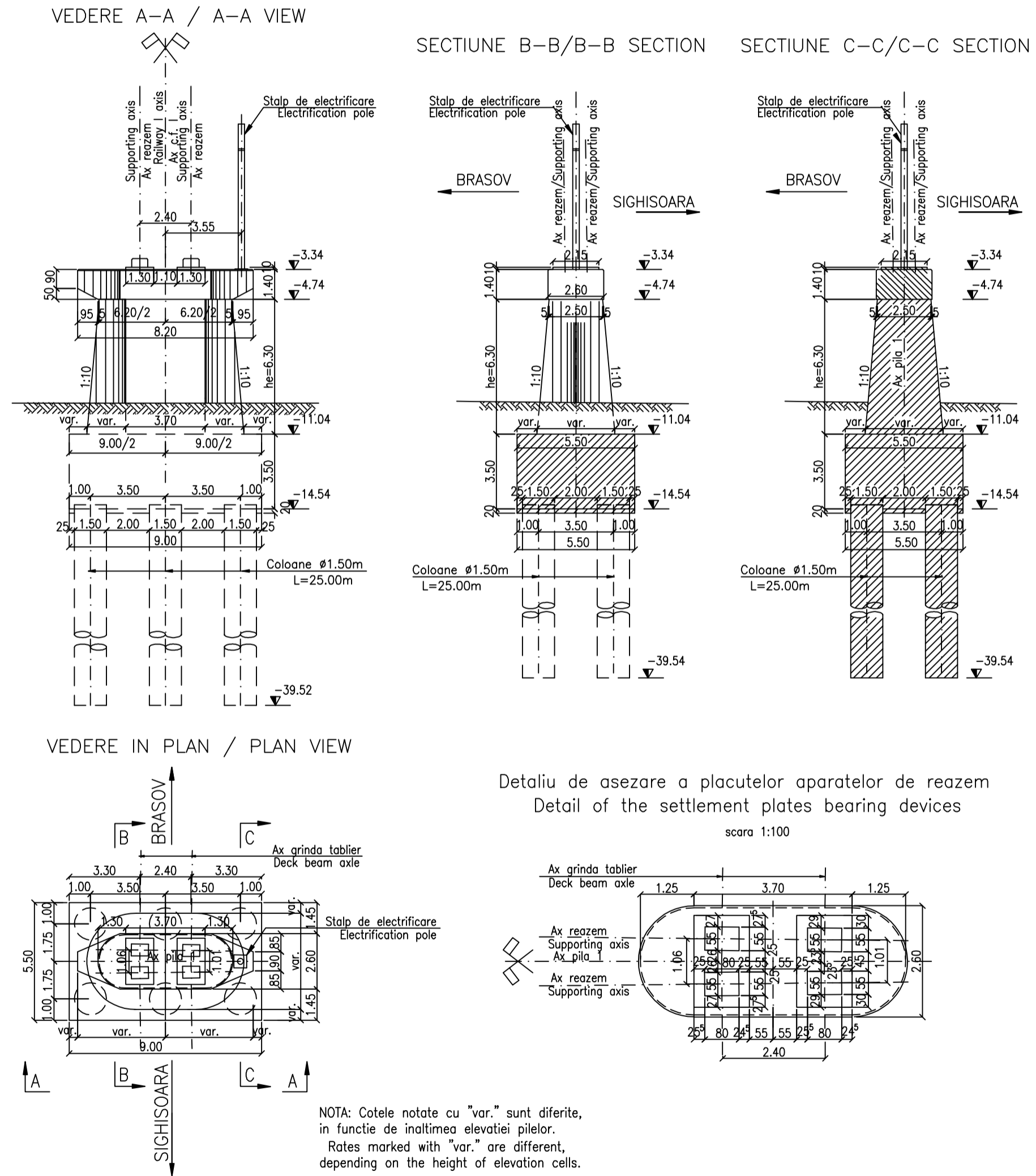


LINIA 2 P I L A 1



LINIA II

PILA	he(m)	COLOANE(m)
1	6.30	L=25.00
2	6.90	L=25.00
3	7.30	L=25.00
4	7.60	L=25.00
5	7.50	L=25.00
6	7.60	L=25.00
7	7.60	L=25.00
8	8.20	L=25.00
9	8.70	L=25.00
10	9.10	L=25.00
11	9.70	L=25.00
12	10.30	L=25.00
13	10.60	L=25.00
14	8.70	L=25.00
15	9.70	L=25.00
16	9.70	L=25.00
17	9.70	L=25.00
18	9.70	L=25.00
19	9.50	L=25.00
20	9.00	L=25.00
21	7.60	L=25.00
22	6.90	L=25.00
23	6.00	L=25.00
24	5.50	L=20.00
25	5.20	L=20.00
26	5.20	L=20.00
27	5.20	L=20.00
28	5.20	L=20.00
29	5.20	L=20.00
30	5.20	L=20.00
31	5.20	L=20.00
32	5.90	L=20.00
33	6.20	L=25.00
34	6.50	L=25.00
35	6.90	L=25.00

LEGENDA BETOANELOR/CONCRETE LIST

- Beton armat in cuzineti si in bancheta cuzinetilor
Reinforced concrete in the cushions and cushions bench
C 35/45-CEM I/A-S 52,5-(XC4+XF3+XA2)-A/C=0,50-D_{max}16-CI 0,20
- Beton armat in fundatii indirecte(coloane si radiere) si in elevatii:
Plain concrete in abutments foundations:
C 25/30-CEM II/A-S 42,5-(XC4+XF3)-A/C=0,50-D_{max}16-CI 0,20
- Beton de egalizare
Concrete in the protection layer of the waterproofing
C 25/30-CEM II/A-S 32,5-(XF3)-A/C=0,55-D_{max}16-CI 0,20

In cazul in care temperatura in timpul turnarii este scadzuta, se vor folosi cimenturile cu rezistenta initiala mare, R si aditivi acceleratori, iar in cazul turnarii pe timp cald, cimenturile cu rezistenta initiala uzuala, N si aditivi intarзаторi (conf. NE 012/2-2010 si tabelului 2 din SR EN 197-1:2002).
When the temperature during the casting is low, cements with high initial resistance, R and accelerating additives shall be used and when it is cast during warm weather, cements with common initial resistance, N and delaying additives shall be used (according to the norm NE 012/2-2010 and table 2 for the SR EN 197-1:2002).

ATENTIE/ATTENTION

Aprovizionarea aparatelor de reazem se va face inaintea executarii cuzinetilor si a banchetei acestora. In cazul in care inaltimea aparatelor de reazem aprovizionate difera fata de cea considerata in proiect se vor modifica inaltimea pe reazem corespunzator cu noile aparate.
The bearing blocks shall be supplied before building the bearings and their seats. In case the height of the supplied bearing blocks differs from that given in the project, the heights on the seats shall be adjusted so as to comply with the new devices.

NOTA:

- Prezentul plan s-a intocmit in conformitate cu dispozitia generala
- Convoaiele de calcul pentru infrastructura sunt LM 71 si SW/2.
- La executie se vor respecta cu strictete prevederile din "Normativ pentru producerea betonului si executarea lucrarilor din beton, beton armat si beton precomprimat. Partea 1: Producerea betonului", indicativ NE 012/1-2007 si "Normativ pentru producerea betonului si executarea lucrarilor din beton, beton armat si beton precomprimat. Partea 2: Executarea lucrarilor din beton", indicativ NE 012/2-2010, iar verificarea calitatii lucrarilor si receptionarea lor se va face conform normativului C56-1985.
- Construcția se încadrează în categoria de importanță B (construcții de importanță deosebită), modelul 1-de asigurare a calitatii si clasa de importanță B, conform HG 766/1997.
- Proiectul va fi verificat la exigentele A4.2; B2.2; D2.2.

NOTE:

- This plan has been drawn up according to the general disposition.
- The bridge corresponds to the UIC determination conveyors (LM71 and SW/2).
- The execution will strictly comply with the provisions of "Practice code for the concrete production and works execution, reinforced and pre-stressed concrete - Part 1: Practice code for concrete production" NE 012/1-2007 and "Practice code for the concrete production and works execution, reinforced and pre-stressed concrete - Part 2: The execution of concrete works." NE 012/2-2010, and the quality and the reception of the works shall be made accordingly to Norm C 56-1985.
- The construction has been classified in B category of importance (high important constructions), model 1-ensuring the quality and class of importance B according to C.O. 766/97.
- The project will be checked in order to comply with the A4.2; B2.2; D2.2 requirements.

This drawing is forbidden to be copied, lent or used in other purposes than those previously approved by AREX Lider Company as its owner.
Se interzice copierea, difuzarea, imprinutarea sau utilizarea in alte scopuri, fara permisiunea AREX Lider Company ca proprietar al desenului.

D				
C				
B				
A	12.2011	Revizua 1	Cristina Vasiliu	
Indice	Data	Modificare	Proiectant	Aprobat Consultant
Index	Date	Modification/Revision	Designer	Approved Consultant
				Aprobat CFR
				Approved CFR



CLIENT / CLIENT



CONSULTANT / CONSULTANT

	Data	Semnatura
Aprobat		
Approved		
Aprobat		
Approved		
Verificat		
Checked		

SUBCONTRACTANT / SUBCONTRACTOR

	Data	Semnatura
Aprobat		
Approved		
Intocmit		
Elaborated		

Reabilitarea liniei de cale ferata Brasov - Simeria, parte componentă a cordorului IV Pan European, pentru circulația trenurilor cu viteză maximă de 160 km/h,
Tronsoanel: Brasov - Sighisoara
Rehabilitation of the railway line Brasov - Simeria, component Part of the IV Pan-European Corridor, for the trains circulation with maximum speed of 160 km/h,
Section: Brasov - Sighisoara

Denumire desen / Drawing Title :
INTERVAL / SECTION APATA - RACOS
Viaduct Km 212+287.73 - L=36x30.00m
PLAN COFRAJ PILE LINIA II/ DECKING PLAN LINE II CELLS

Codificare / Codification System	Scara / Scale	LOT / LOT	Nr. / No
	1:200 1:100		01/01

E A 5 1 0 1 E 1 0 B B P V 0 1 9 2 0 0 6 1