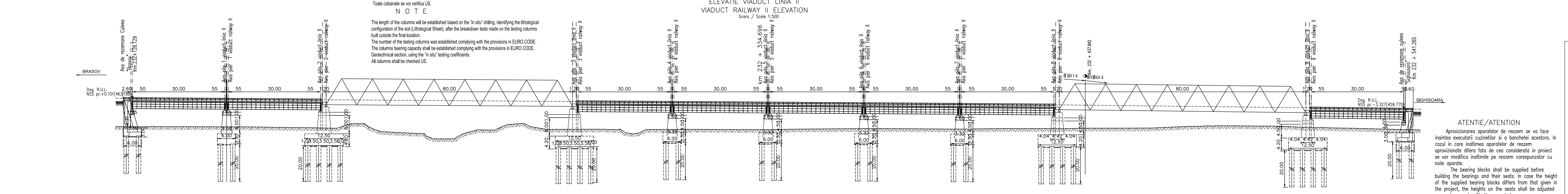
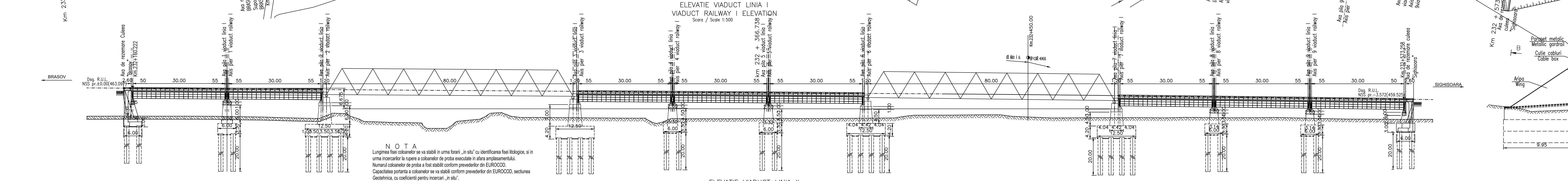
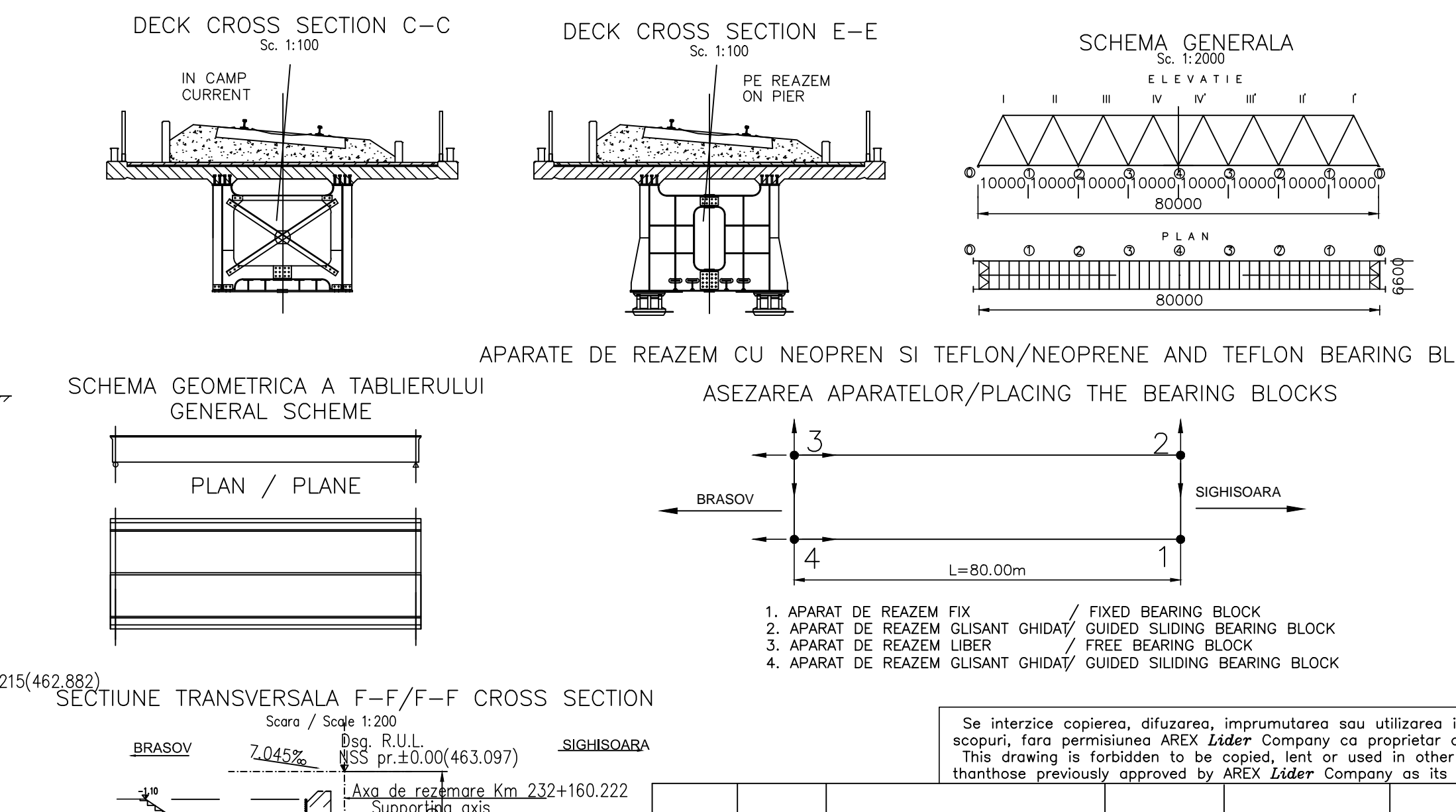
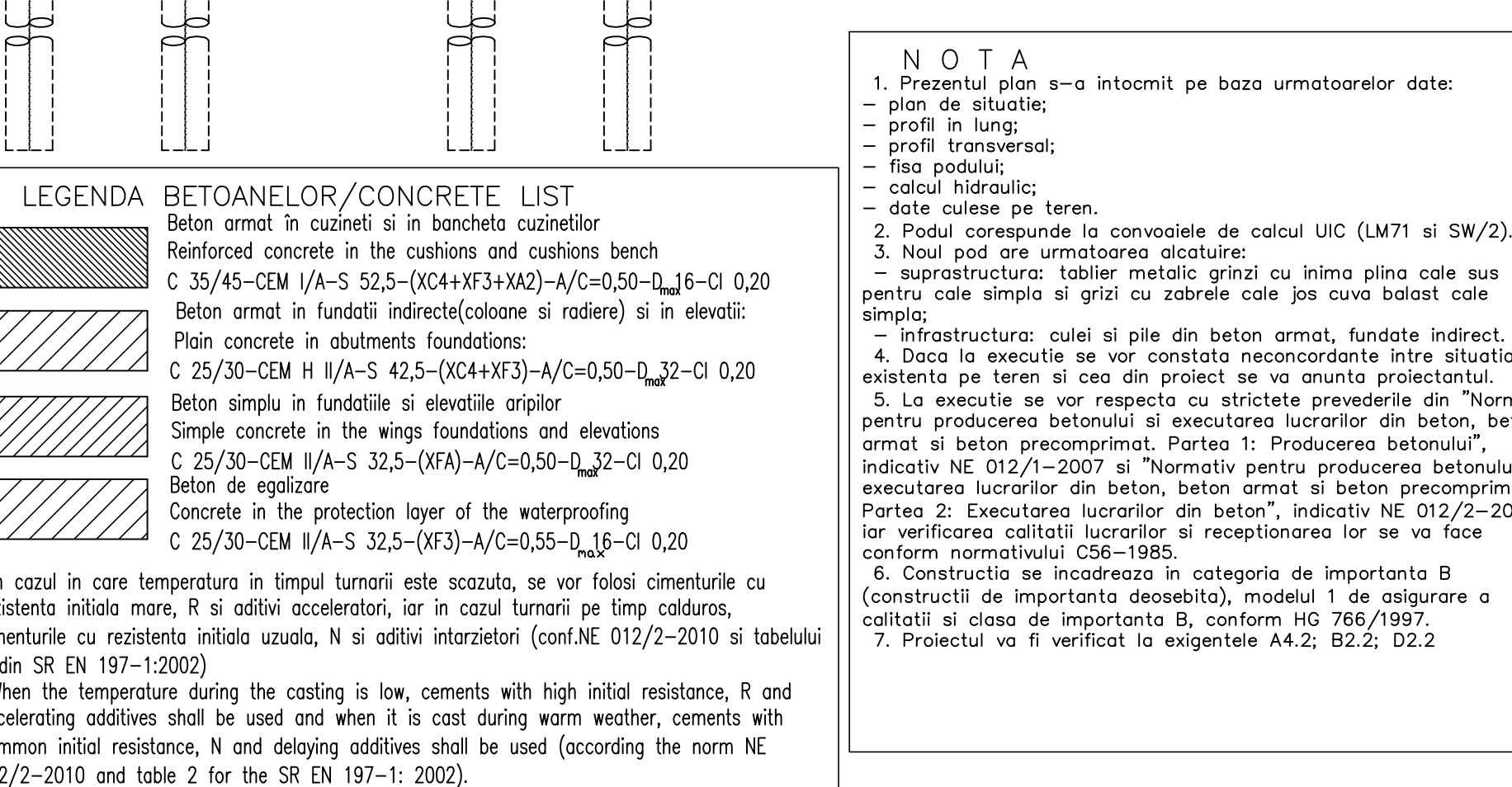
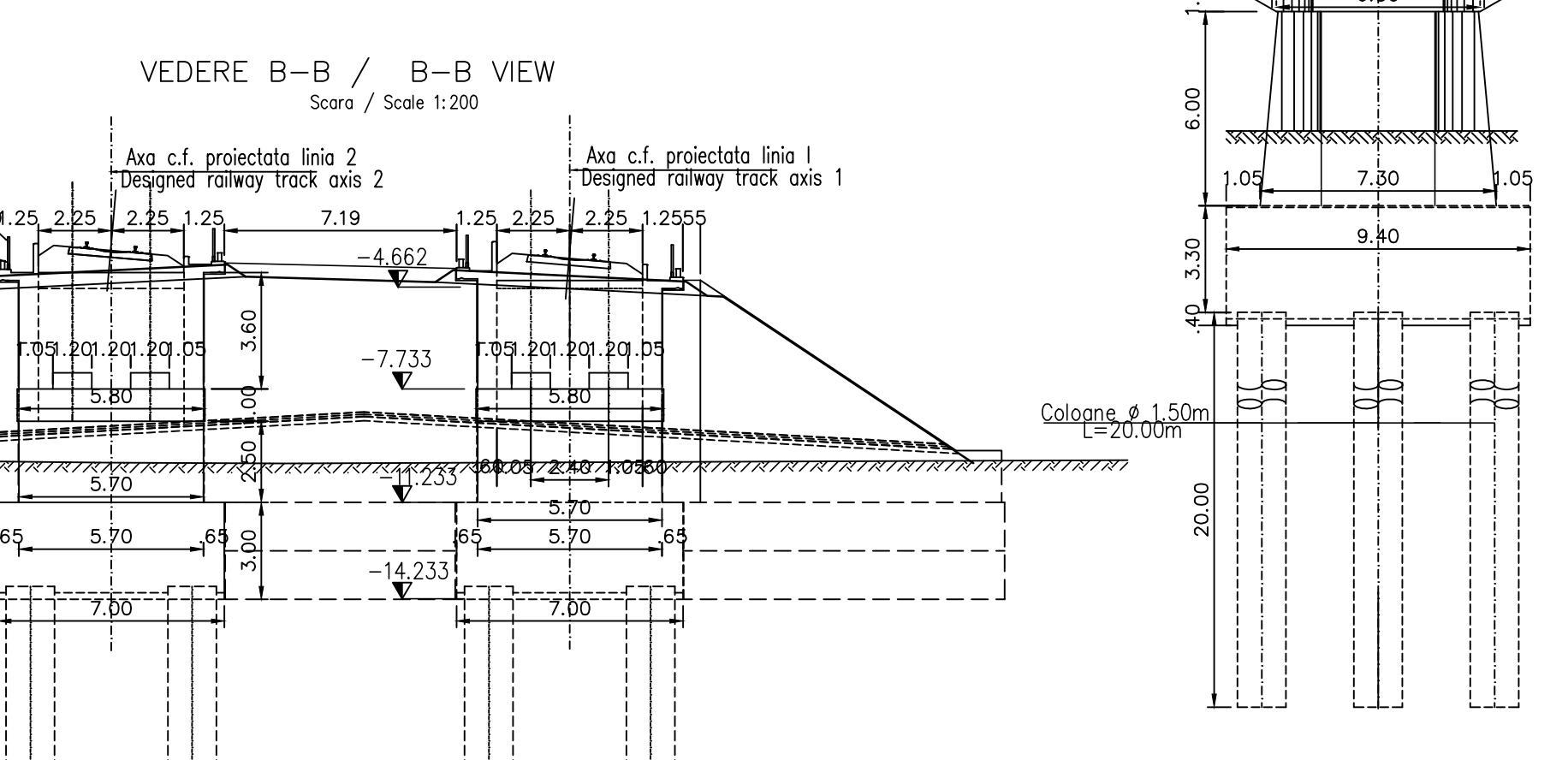
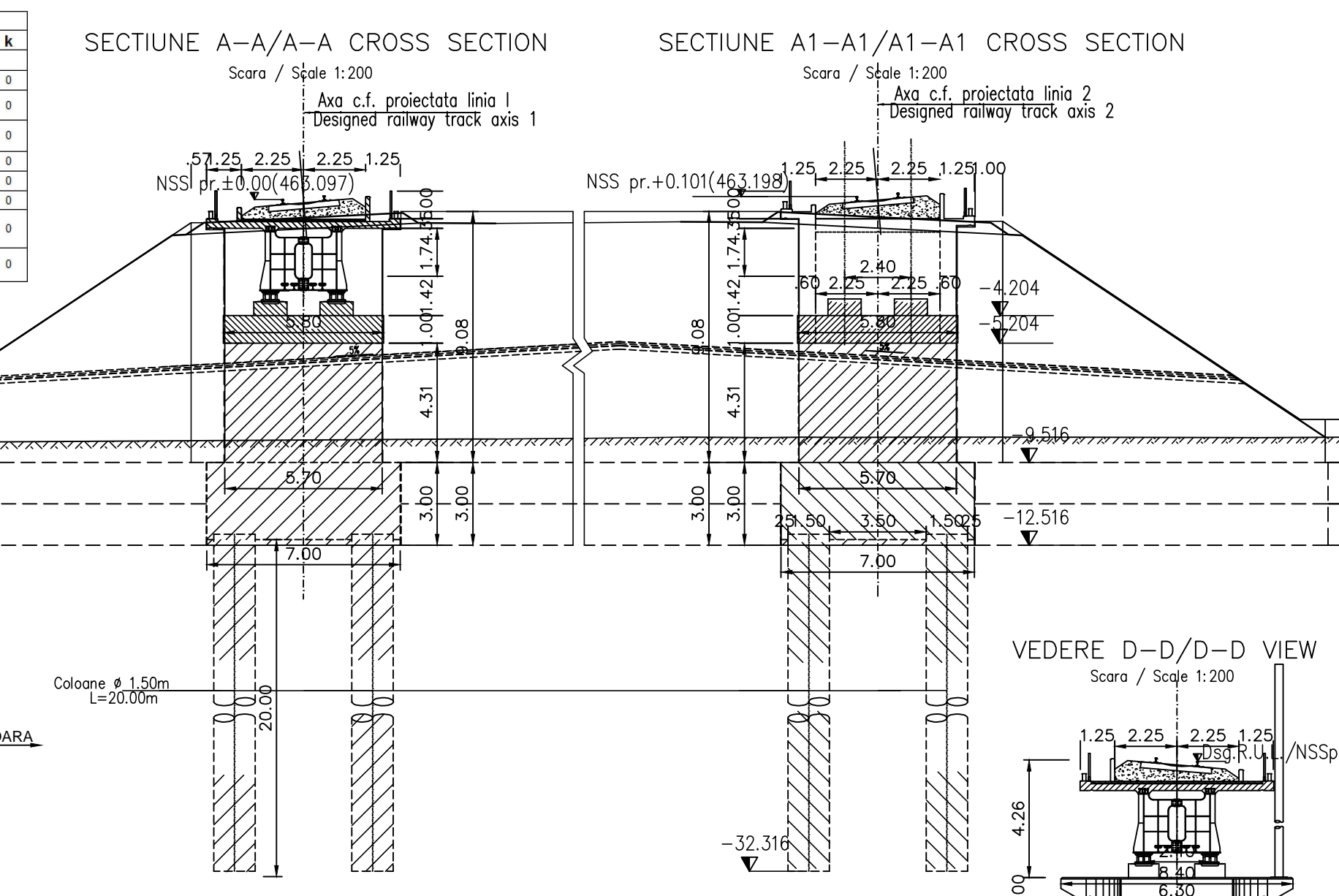


TITLUL PLANȘII/PLAN TITLE	COD/CODE	PLANURI TIP LA POZITIE															
		a	b	c	d	e	f	g	h	i	j	k					
DETAILS FOR BEARING BLOCK, TYPE V OFR		E	A	S	1	0	1	E	0	0	0	0	0	0	0	1	0
DETAILS FOR BEARING BLOCK MADE OF TEFLON AND NEOPRENE		E	A	S	1	0	1	E	0	0	0	0	0	0	0	0	2
DETAILS FOR WATERPROOFING AND JOINT		E	A	S	1	0	1	E	0	0	0	0	0	0	0	0	3
DETAILS FOR DISCHARGE OPENINGS		E	A	S	1	0	1	E	0	0	0	0	0	0	0	0	4
DETAILS FOR FASTENERS ON THE BEAMS		E	A	S	1	0	1	E	0	0	0	0	0	0	0	0	5
DETAILS FOR ELECTRICIFICATION POLES		E	A	S	1	0	1	E	0	0	0	0	0	0	0	0	6
STRUCTURAL FORMWORKS OF STEEL BEAM FOR TRUSS BEAM DECK WITH L=30.00m BY 3.00m		E	A	S	1	0	1	E	0	0	0	0	0	0	0	0	7
STRUCTURAL FORMWORKS OF PILES DECK WITH L=30.00m		E	A	S	1	0	1	E	0	0	0	0	0	0	0	0	8



NOTA
 Lungimea fisii coloanelor se va stabili in urma forarii „in situ” cu identificarea fiselito-logice, si in urma incercarilor la rupere a coloanelor de proba executate in afara amplasamentului.
 Numarul coloanelor de proba a fost stabilit conform prevederilor din EUROCODE.
 Capacitatea portanta a coloanelor se va stabili conform prevederilor din EUROCODE, sectiunea Geotehnica, cu coeficienti pentru incercari „in situ”.
 Toate coloanele se vor verifica US.

NOTE
 The length of the columns will be established based on the "in situ" drilling, identifying the lithological configuration of the soil (Lithological Sheet), after the breakdown tests made on the testing columns built outside the final location.
 The number of the testing columns was established complying with the provisions in EURO CODE.
 The columns bearing capacity shall be established complying with the provisions in EURO CODE, Geotechnical section, using the "in situ" testing coefficients.
 All columns shall be checked US.



Index	Date	Modification/Revision	Practician Designer	Approbat Approved Consultant	Aprobati CFR Approved CFR
A	12.2011	Revizua 1	Dinu Andreea	Approbat Consultant	Aprobati CFR Approved CFR

CLIENT / CLIENT
 GUVERNUL ROMANIEI ROMANIAN GOVERNMENT
 PROIECT FINANAT DE UNIUNEA EUROPEANA EUROPEAN UNION FINANCED PROJECT

CLIENT / CLIENT
 C.N.C.F. "C.F.R." - S.A.

CONSULTANT / CONSULTANT
 R. Liuzza, C. Gambelli, V. Kallidromitis

SUBCONTRACTOR / SUBCONTRACTOR
 A. Dinulescu Stanciu

REABILITAREA LINIEI DE CALE FERATA BRASOV - SIMERIA, PARTE COMPONENT A CORIDORULUI IV PAN-EUROPEAN, PENTRU CIRCULIA LA TENACIUN CU VITEZA MAXIMA DE 160 KM/H, BRASOV - SIGHISOARA
 Rehabilitation of the railway line Brasov - Simeria, component Part of the IV Pan-European Corridor, for the trains circulation with maximum speed of 160 km/h, Section : Brasov - Sighisoara

INTERVAL / SECTION RACOS-CATA VIADUCT km 232+366.051 L=413.70m DISPOZITIE GENERALA / DISPOSITION GENERALE

Codificare / Codification System: EA51 01 C 12 PA PV 02 3 0 0 0 2 1

LEGENDA BETOANELOR/CONCRETE LIST

	Beton armat in cuzineti si in bancheta cuzinetilor
	Reinforced concrete in the cushions and cushions bench
	Beton armat in fundatii indirecte (coloane si radieri) si in elevatii
	Plan concrete in abutments foundations
	Beton simplu in fundatiile si elevatiile arilor
	Simple concrete in the wings foundations and elevations
	C 25/30-CEM II/A-S 32,5-(XFA)-A/C=0,50-D ₃₂ -Cl 0,20
	Beton de egalizare
	Concrete in the protection layer of the waterproofing
	C 25/30-CEM II/A-S 32,5-(XG3)-A/C=0,55-D ₁₆ -Cl 0,20

NOTA
 1. Prezentul plan s-a intocmit pe baza urmatoarelor date:
 - plan de situatii;
 - profil in lung;
 - profil transversal;
 - fisii podului;
 - calcul hidrologic;
 - date culuse pe teren.
 2. Podul corespunde la convosiile de calcul UIC (LM71 si SW/2).
 3. Noul pod are urmatoarea alcatură:
 - suprastructura: tablier metalic grinzii cu inima plina care sus pentru cale simpla si grizi cu zabrele care sus pentru cale simpla;
 - infrastructura: culsi si pile din beton armat, fundate indirect.
 4. Daca la executie se vor constata neconcordante intre situatia existenta pe teren si cea din proiect se va anunta proiectantului.
 5. La executie se vor respecta cu strictete prevederile din "Normativ pentru producerea betonului si executarea betonului din beton, beton armat si beton precomprimat, Partea 1: Producerea betonului", indicativ NE 012/1-2007 si "Normativ pentru producerea betonului si executarea betonului din beton, beton armat si beton precomprimat, Partea 2: Executarea lucrarilor din beton", indicativ NE 012/2-2010, sau prevederile altor norme in vigoare la data de incepere a lucrarilor.
 6. Constructia se incadreaza in categoria de importanta B, conform normativului C56-1985.
 7. Proiectul va fi verificat la exigentele A4.2; B2.2; D2.2.

NOTE
 1. This plan has been drawn up based on the following data:
 - Lay-out Plan;
 - Longitudinal Profile;
 - Cross-section Profile;
 - Bridge's File;
 - Hydraulic determination;
 - Field Data.
 2. Bridge conveys calculation corresponds to UIC (LM71 and SW/2).
 3. The new bridge has the following structure:
 - Superstructure: metallic deck with concrete box for simple track;
 - Infrastructure: abutments and piers reinforced concrete, with indirect foundation.
 4. The execution will strictly comply with the provisions of "Practice code for concrete production NE 012/1-2007 and "Practice code for the concrete production and works execution, reinforced and pre-stressed concrete - Part 2: The execution of concrete works". NE 012/2-2010, and the quality and the reception of the works shall be made according to Norm C 56-1985.
 5. In case during the execution there will be found out any discrepancies between the existing situation on site and in project, the designer will be announced.
 6. The construction is classified in the B category of importance. Special importance constructions, model 1 for quality ensuring according to HG 766/97.
 7. The project will be checked to comply with the requirements A4.2; B2.2; D2.2.

ATENTIE/ATENTION
 Aproximarea aparatelor de reazem se va face inaintea executarii cuzinetilor si a banchetelor acestora. In cazul in care inaltimea aparatelor de reazem aproximativ diferă fata de cea considerata in proiect se vor modifica inaltimea pe reazem corespunzator cu noile aparate.
 The bearing blocks shall be supplied before building the bearings and their seats. In case the height of the supplied bearing blocks differs from that given in the project, the heights on the seats shall be adjusted so to comply with the new devices.