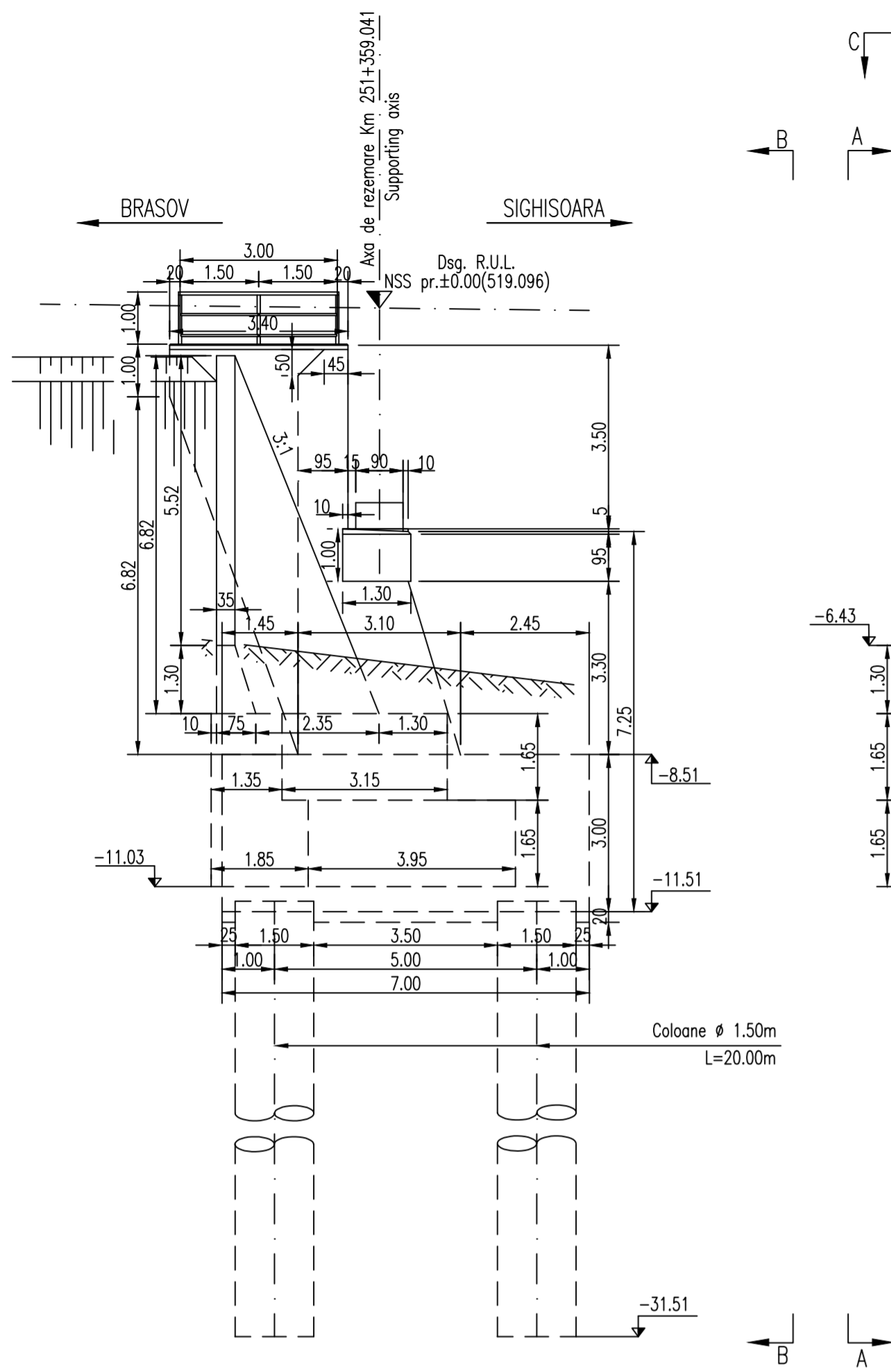
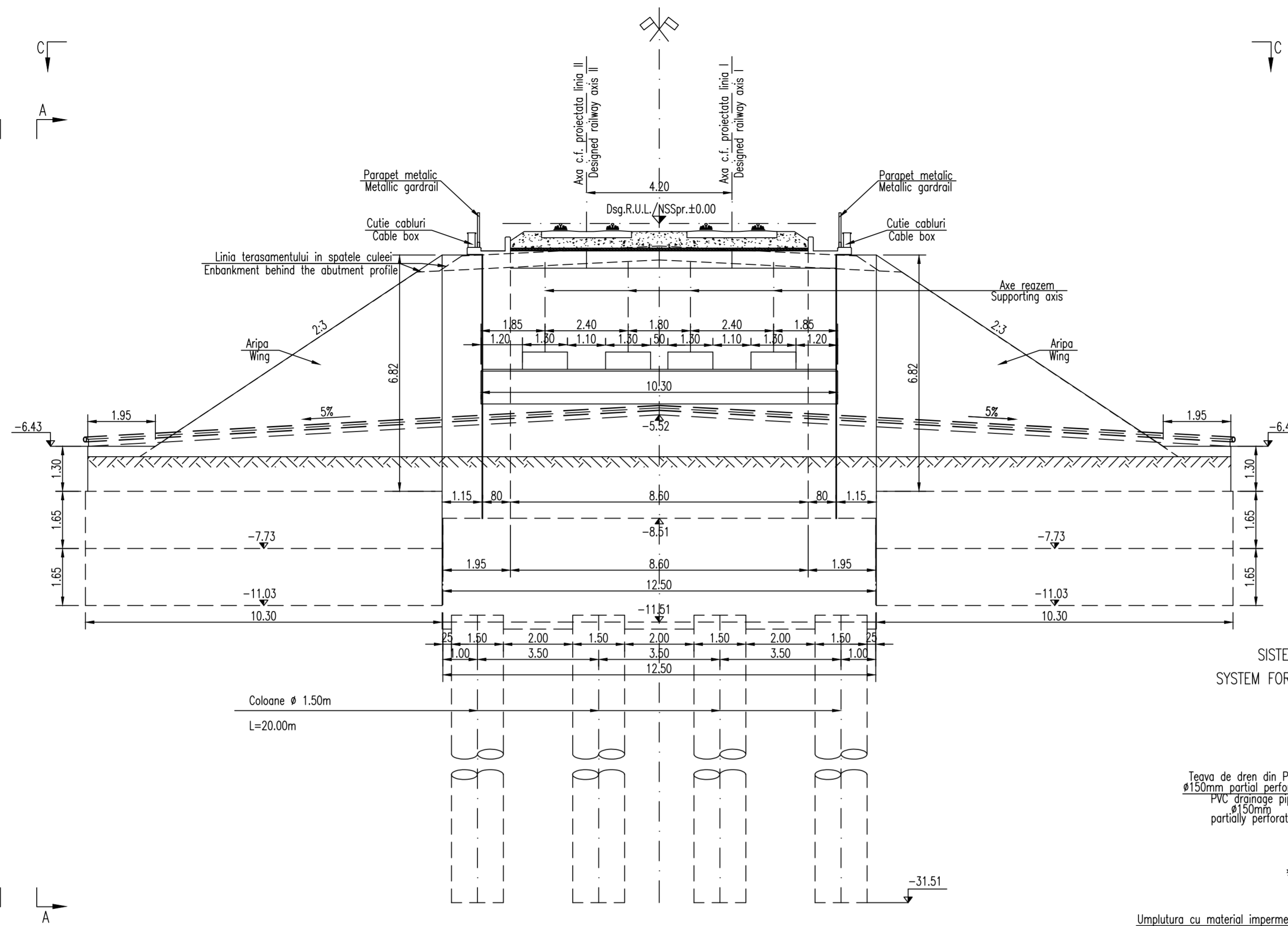


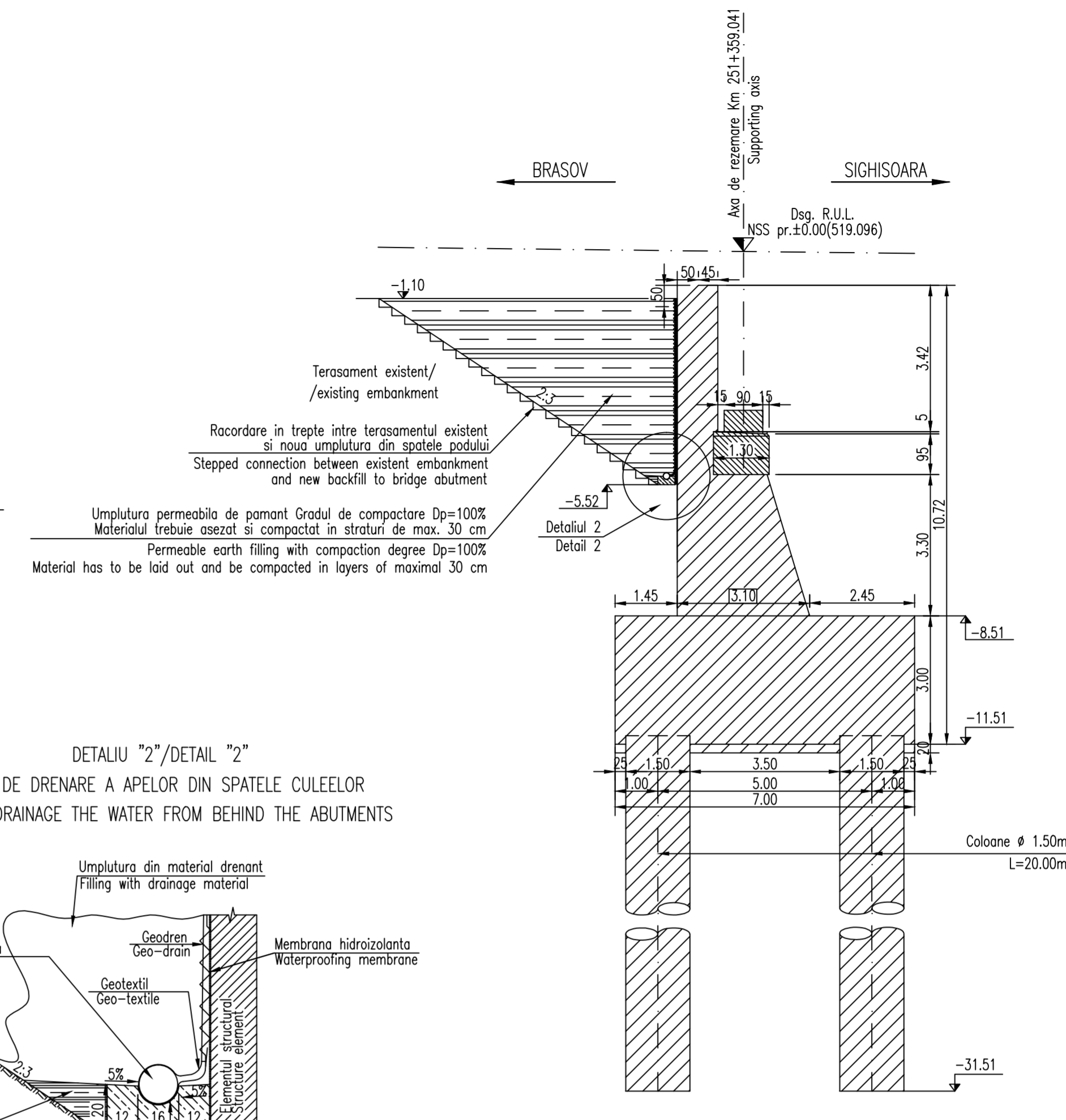
ELEVATIE A-A
ELEVATION A-A
Scara 1:100



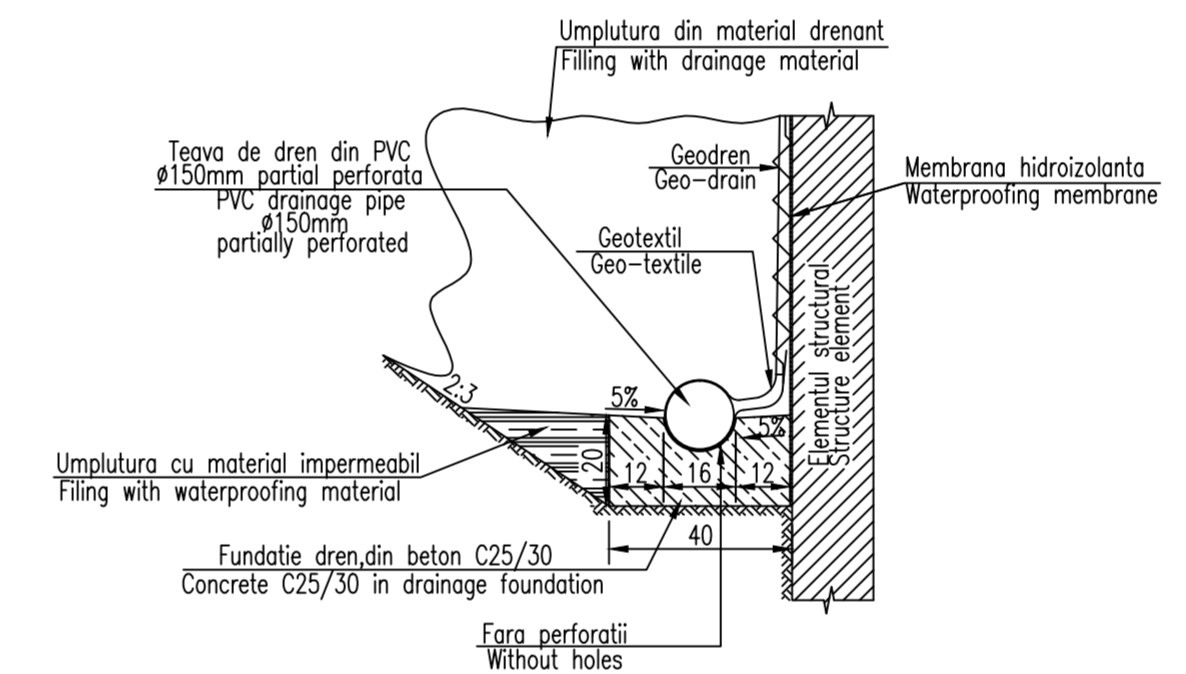
VEDERE FRONTALA B-B
FRONT VIEW B-B
Scara 1:100



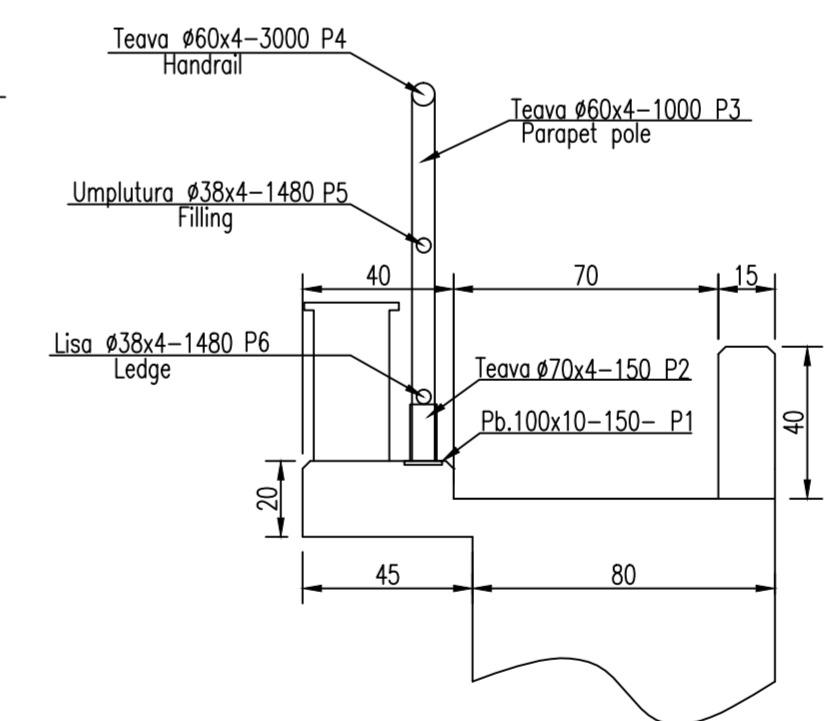
SECTIUNE TRANSVERSALA D-D
CROSS SECTION D-D
Scara 1:100



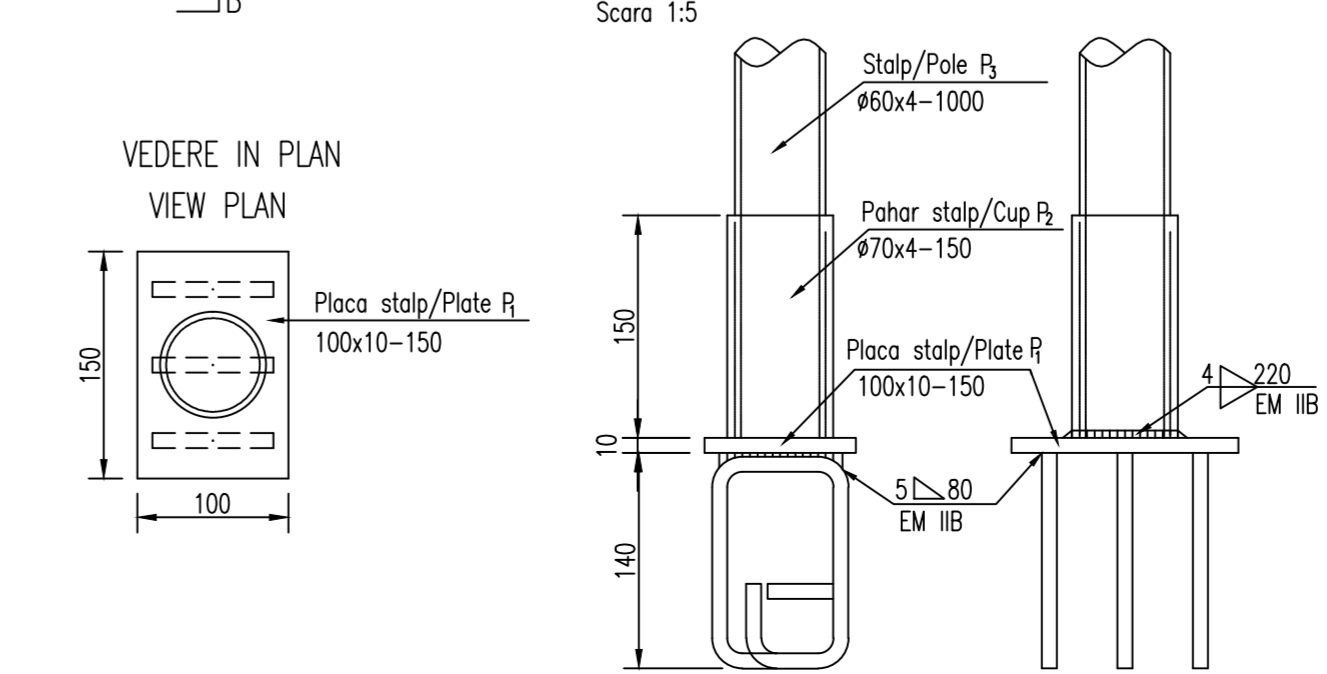
DETALIU "2"/DETAIL "2"
SISTEM DE DREANARE A APELOR DIN SPATELE CULEELOR
SYSTEM FOR DRAINAGE THE WATER FROM BEHIND THE ABUTMENTS



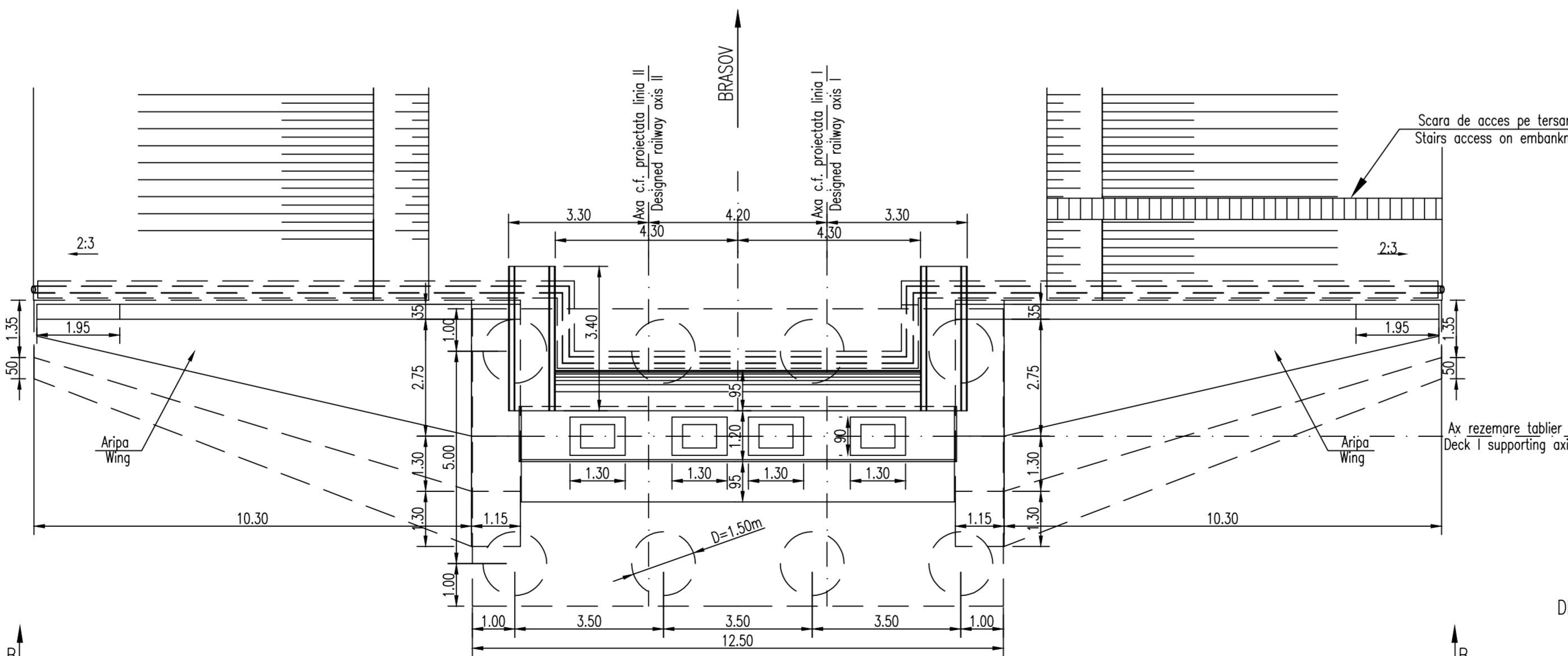
DETALIU TROTUAR/SIDEWALK
Sc 1:20



DETALIU 1 DE PRINDERE A PARAPETULUI
1 DETAIL HANDRAIL FASTENING
Scara 1:5



VEDERE IN PLAN C-C
PLAN VIEW C-C
Scara 1:100



- NOTA:
1. Prezentul plan s-a intocmit in conformitate cu dispozitia generala.
 2. Podul corespunde la convosiile de calcul UIC(LM 71 si SW/2).
 3. La executie se vor respecta cu stricte prevederile din "Normativ pentru producerea betonului si executarea lucrarilor din beton, beton armat si beton precomprimat. Partea 1: Producerea betonului", indicativ NE 012/1-2007 si "Normativ pentru producerea betonului si executarea lucrarilor din beton, beton armat si beton precomprimat. Partea 2: Executarea lucrarilor din beton", indicativ NE 012/2-2010, iar verificarea calitatii lucrarilor si receptionarea lor se va face conform normativului C56-1985.
 4. Constructia se incadreaza in categoria de importanta B (construcții de importanta deosebita), modelul 1-de asigurare a calitatii si clasa de importanta B, conform HG 766/1997.
 5. Proiectul va fi verificat la exigentele A4.2; B2.2; D2.2.

- NOTE:
1. This plan has been drawn up according to the general disposition.
 2. The bridge corresponds to the UIC determination convoys (LM71 and SW/2).
 3. The execution will strictly comply with the provisions of "Practice code for the concrete production and works execution, reinforced and pre-stressed concrete - Part 1: Practice code for concrete production" NE 012/1-2007 and "Practice code for the concrete production and works execution, reinforced and pre-stressed concrete - Part 2: The execution of concrete works." NE 012/2-2010, and the quality and the reception of the works shall be made accordingly to Norm C 56-1985.
 4. The construction has been classified in B category of importance (high important constructions), model 1-ensuring the quality and class of importance B according to G.O. 766/97.
 5. The project will be checked in order to comply with the A4.2; B2.2; D2.2 requirements.

LEGENDA BETOANELOR/CONCRETE LIST

	Beton armat in cuzineti si in bancheta cuzinetilor Reinforced concrete in the cushions and cushions bench C 35/45-CEM I/A-S 52,5-(XC4+XF3+XA2)-A/C=0,50-D _{max} 16-CI 0,20
	Beton armat in fundatii indirecte(coloane si radiere) si in elevatii Plain concrete in abutments foundations: C 25/30-CEM II/A-S 42,5-(XC4+XF3)-A/C=0,50-D _{max} 32-CI 0,20
	Beton simplu in fundatiile si elevatiile aripiilor Simple concrete in the wings foundations and elevations C 25/30-CEM II/A-S 32,5-(XFA)-A/C=0,50-D _{max} 32-CI 0,20
	Beton de egalizare Concrete in the protection layer of the waterproofing C 25/30-CEM II/A-S 32,5-(XF3)-A/C=0,55-D 16-CI 0,20

In cazul in care temperatura in timpul turnarii este scazuta, se vor folosi cimenturile cu rezistenta initiala mare, R si aditivi acceleratori, iar in cazul turnarii pe timp cald, cimenturile cu rezistenta initiala uzuala, N si aditivi intarziatori (conf.NE 012/2-2010 si tabelului 2 din SR EN 197-1:2002)
When the temperature during the casting is low, cements with high initial resistance, R and accelerating additives shall be used and when it is cast during warm weather, cements with common initial resistance, N and delaying additives shall be used (according to the norm NE 012/2-2010 and table 2 for the SR EN 197-1: 2002).

This drawing is forbidden to be copied, lent or used in other purposes than those previously approved by AREX Lider Company as its owner.
Se interzice copierea, difuzarea, imprumutarea sau utilizarea in alte scopuri, fara permisiunea AREX Lider Company ca proprietar al desenului.

Aprovizionarea aparatelor de rezem se va face inaintea executarii cuzinetilor si a banchetelor acestora. In cazul in care inaltimile aparatelor de rezem diferă fata de cea considerata in proiect se vor modifica inaltimile pe rezem corespunzator cu noile aparate.
The bearing blocks shall be supplied before building the bearings and their seats. In case the height of the supplied bearing blocks differs from that given in the project, the heights on the seats shall be adjusted so as to comply with the new devices.

D					
C					
B					
A	12.2011	Revizia 1 1 Revision	Totan Ciprian		
Index	Date	Modificari Modification/Revision	Proiectant Designer	Aprobat Consultant Approved Consultant	Aprobat CFR Approved CFR



GUVERNUL ROMANIEI
ROMANIAN GOVERNMENT

PROIECT FINANȚAT DE UNIUNEA EUROPEANĂ
EUROPEAN UNION FINANCED PROJECT

C.N.C.F. "C.F.R." - S.A.



CONSULTANT / CONSULTANT			Data	Semnatura
Aprobat	Șef proiect	R. Liuzza		
Approved	Project manager			
Aprobat	Coordonator Secțiune 1	C. Gambelli		
Approved	Section 1 Coordinator			
Verificat	Expert Chief	V.Kalidromitis		
Checked	Checking Expert			

SUBCONTRACTANT / SUBCONTRACTOR				
Aprobat	Responsabil Subcontractant	A. Dinulescu Stanciu	11.2011	
Approved	Subcontractant Responsible			
Intocmit	Proiectant	Totan Ciprian	11.2011	
Elaborated	Designer			

Reabilitarea liniei de cale ferata Braşov - Simeria, parte componentă a coridorului IV Pan European, pentru circulația trenurilor cu viteza maximă de 160 km/h, Tronsonul : Braşov - Sighisoara
Rehabilitation of the railway line Braşov - Simeria, component Part of the IV Pan-European Corridor, for the trains circulation with maximum speed of 160 km/h, Section : Braşov - Sighisoara

Denumire desen / Drawing Title :
INTERVAL / SECTION CATA - ARCHITA
Viaduct Km 251+436.241 D=5x30.00m
PLAN COFRAJ CULEE BRASOV/DECKING PLAN ABUTMENT BRASOV

Codificare / Codification System	Scara / Scale 1:100	LOT / LOT	Nr. / No 01 / 01
E A 5 1	0 1	E 1 4	B B P V 0 2 9 2 0 0 3 1