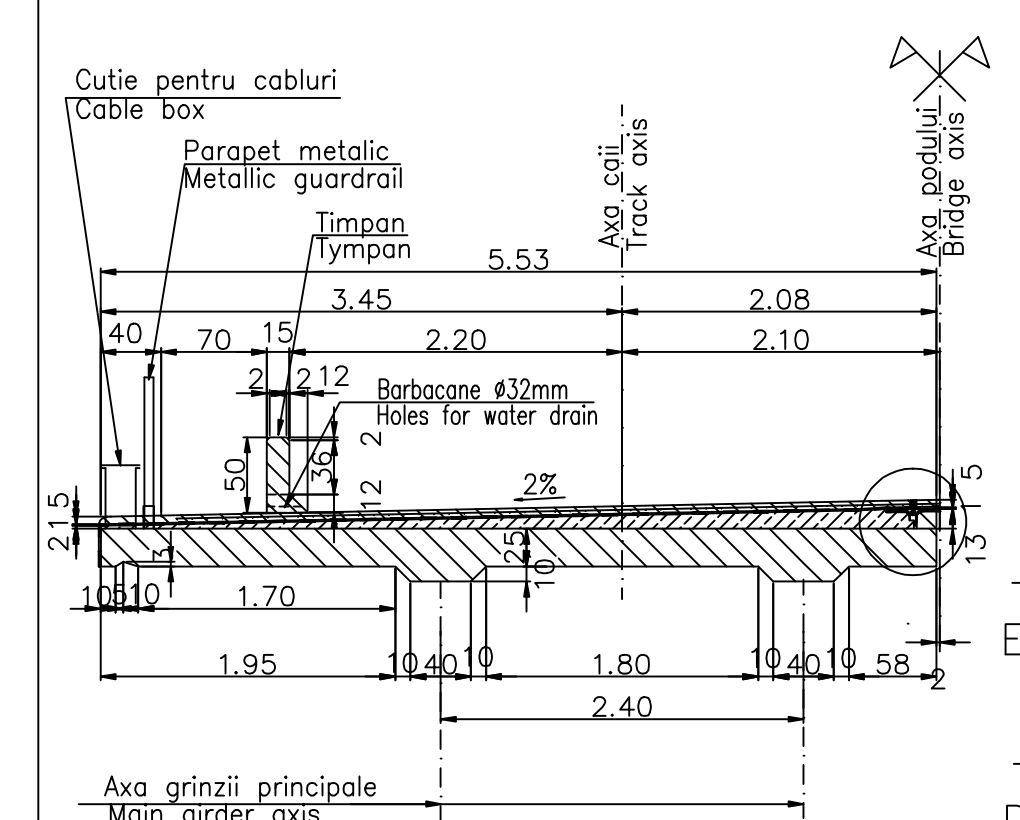
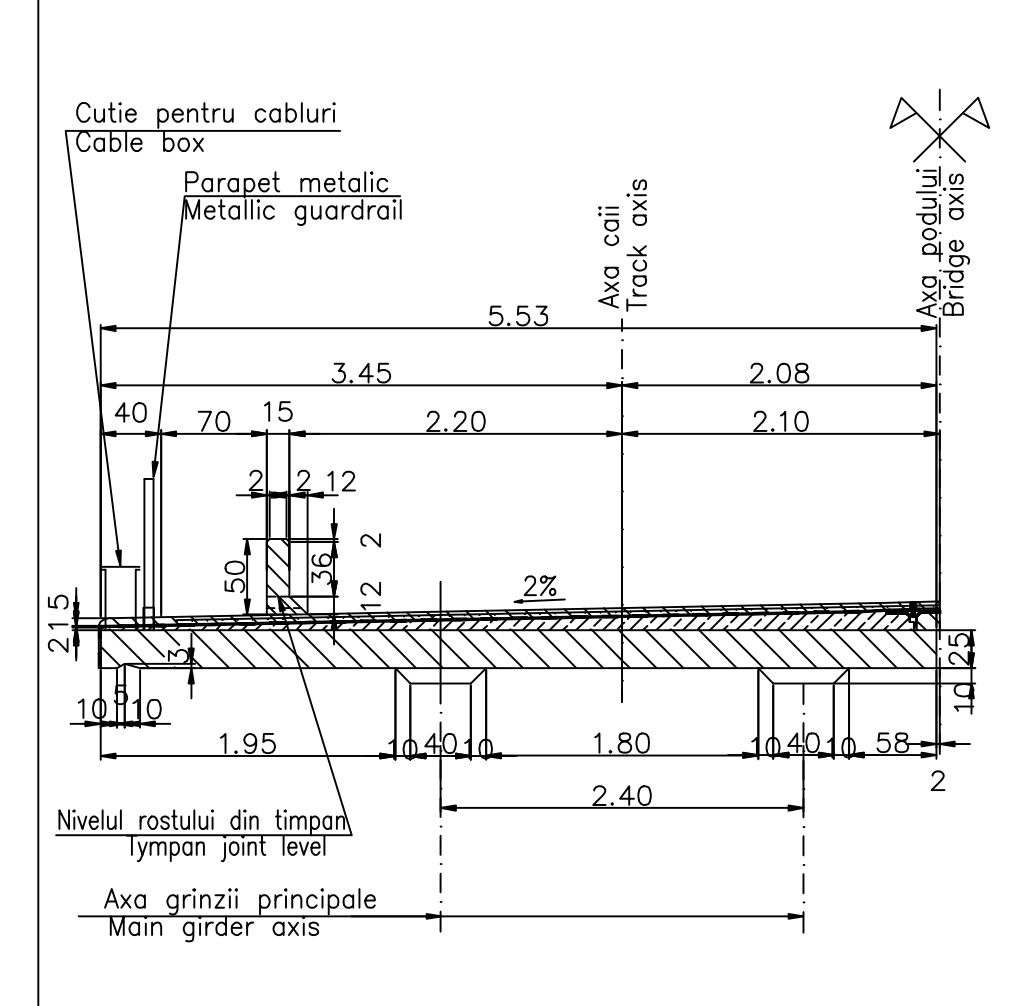


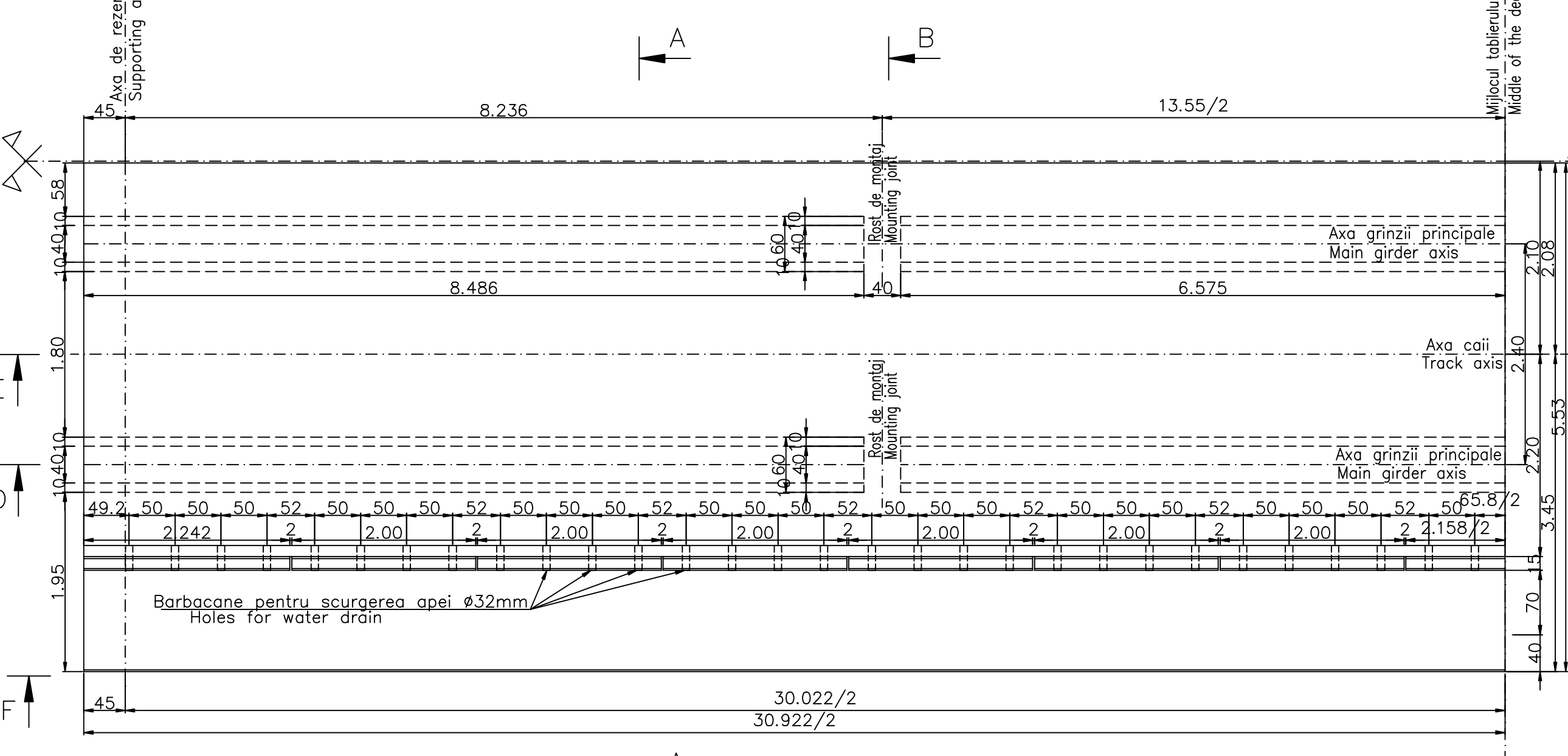
SECTIUNE TRANSVERSALA A-A
A-A CROSS SECTION



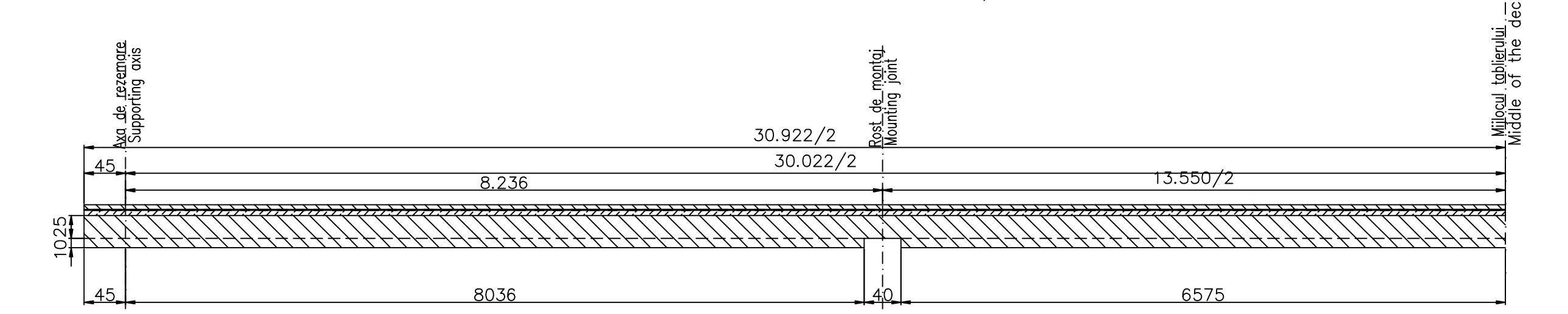
SECTIUNE TRANSVERSALA B-B
B-B CROSS SECTION



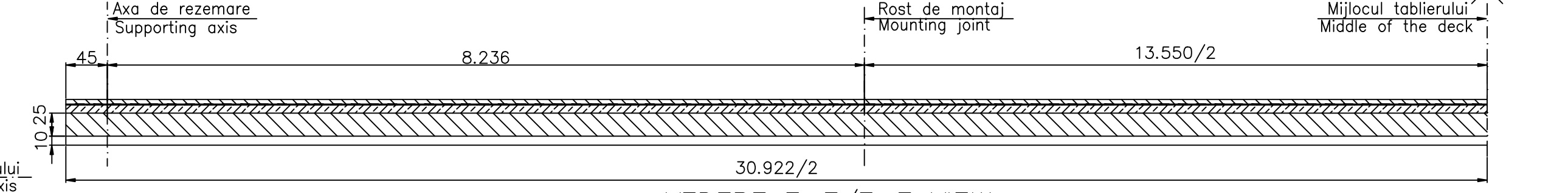
VEDERE IN PLAN C-C/C-C PLAN VIEW



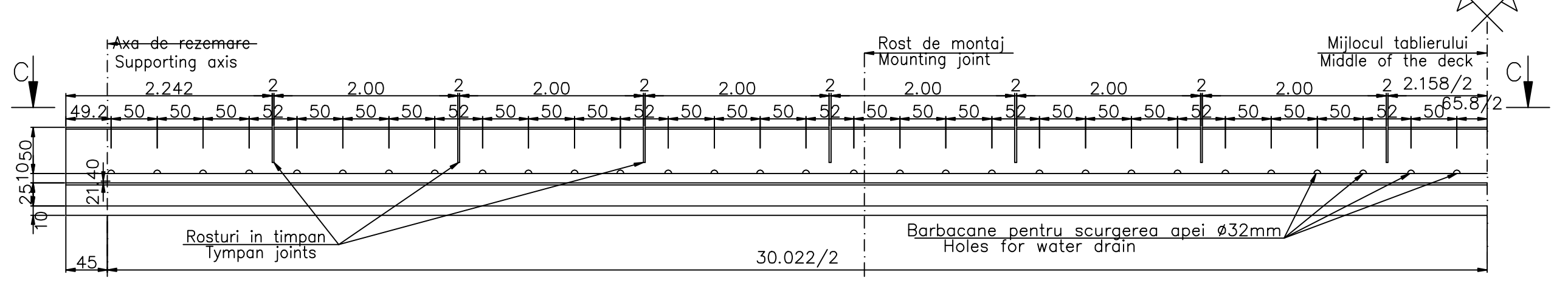
SECTIUNE LONGITUDINALA D-D/D-D SECTION



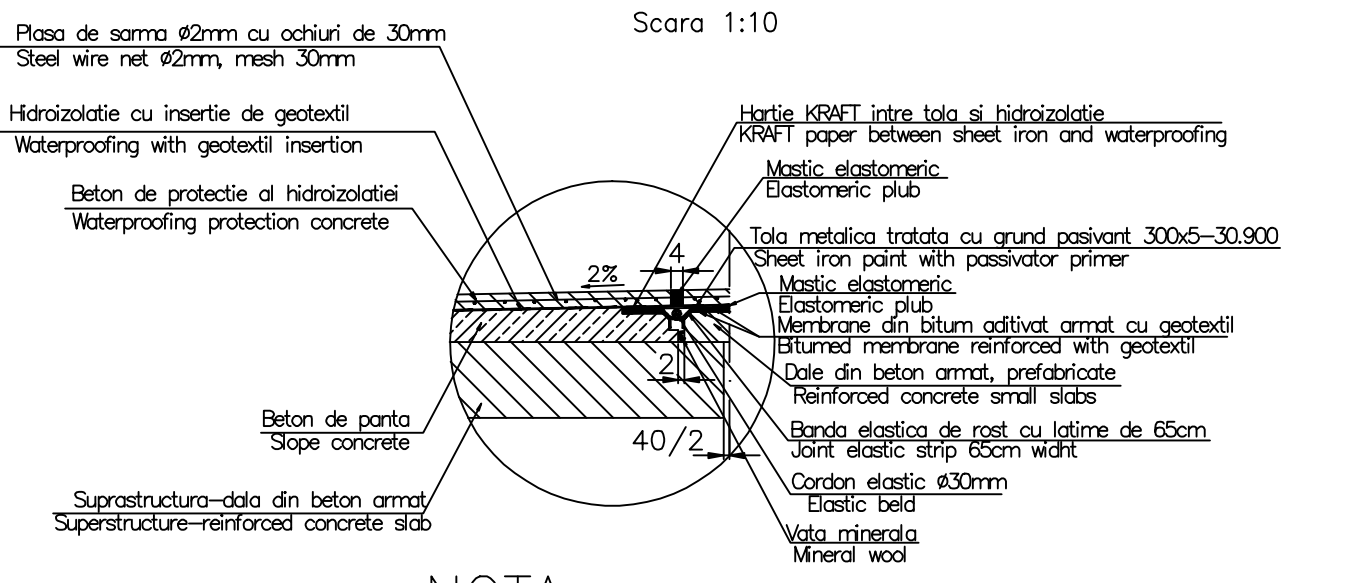
SECTIUNE LONGITUDINALA E-E/E-E SECTION



VEDERE F-F/F-F VIEW



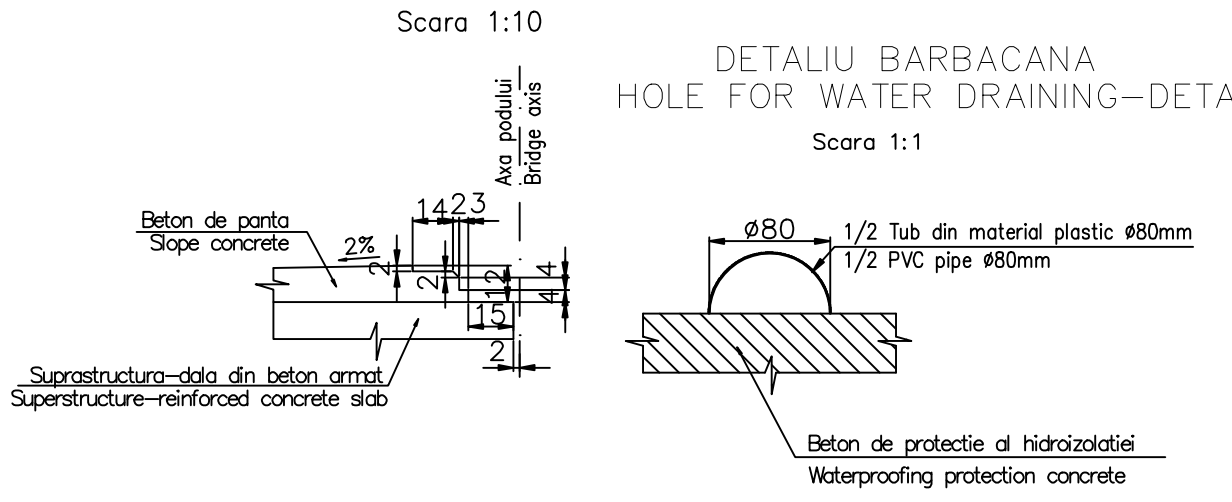
ROST DE DILATARE LONGITUDINAL-DETALIU
LONGITUDINAL JOINT COVERING-DETAIL



NOTA

- Prezentul plan s-a intocmit pe baza Dispozitiei Generale EA51 01 C14 L8 PV 033 0 0020.
- Toate colturile betonului se vor tesii 20/20mm.
- La executie se vor respecta cu strictete prevederile din "Normativ pentru producerea betonului si executarea lucrarilor din beton, beton armat si beton precomprimat, Partea 1: Producerea betonului", indicativ NE 012/1-2007 si Normativ pentru producerea betonului si executarea lucrarilor din beton, beton armat si beton precomprimat, Partea 2: Executarea lucrarilor din beton" indicativ NE 012/2-2010, iar verificarea calitatii lucrarilor si receptionarea lor se va face conform normativului C56-1985.
- Construcia se incadreaza in categoria de importanta B (construcții de importanta deosebita), modelul 1 de asigurare a calitatii si clasa de importanta B, conform HG 766/1997.
- Proiectul va fi verificat la exigentele A4.2; B2.2; D2.2.

DETALIU DE REALIZARE A BETONULUI DE PANTA
SLOPE CONCRETE FORMWORK



NOTE

- This plan was drawn up based on the General Disposition EA51 01 C14 L8 PV 033 0 0020.
- All concrete corners will be chamfered 20/20mm.
- The execution will strictly comply with the provisions of "Practice code for concrete production NE 012/1-2007 and "Practice code for the concrete production and works execution, reinforced and pre-stressed concrete - Part 2: The execution of concrete works." NE 012/2-2010, and the quality and the reception of the works shall be made accordingly to Norm C 56-1985.
- The construction has been classified in B category of importance (high important constructions), model 1-ensuring the quality and class of importance B according to G.O. 766/97.
- The project will be checked in order to comply with the A4.2; B2.2; D2.2 requirements.

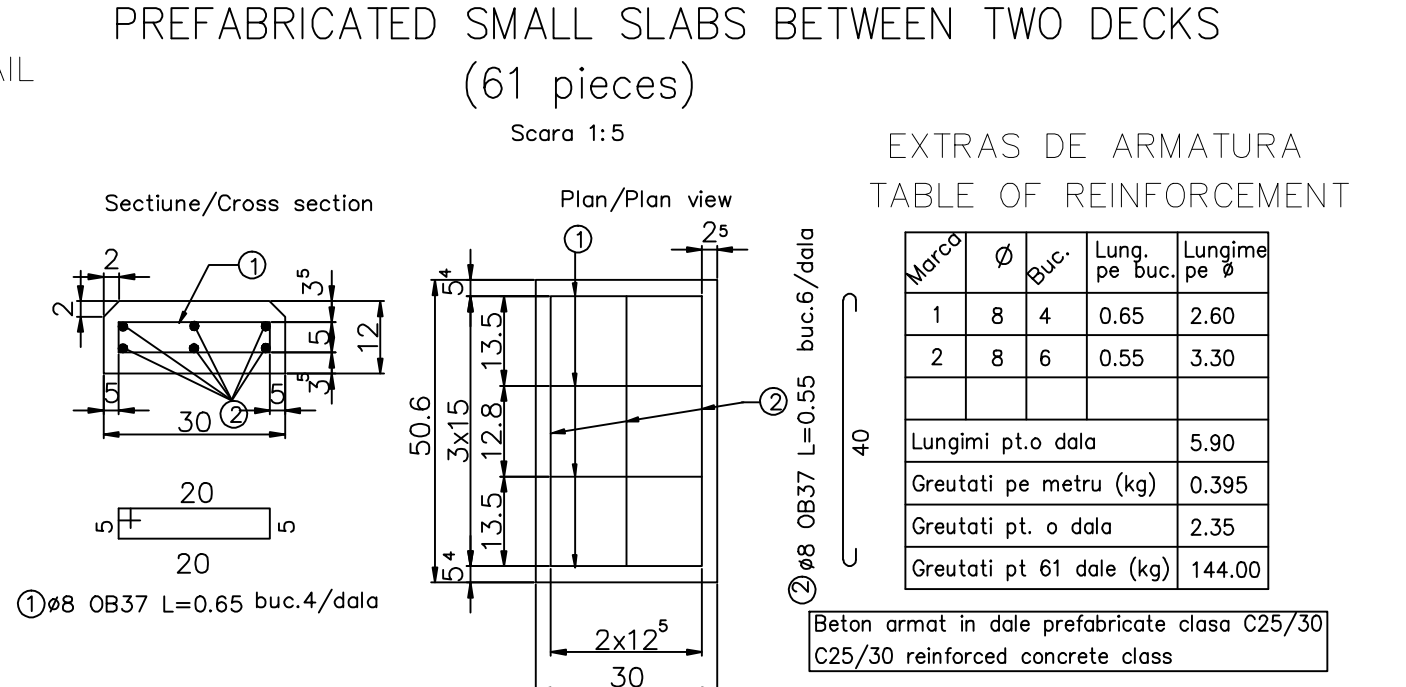
ATENTIE/ATTENTION

- Turnarea betonului se va face continuu (fara intrerupere), inclusiv in console, in timp de max. 5 ore folosind intarziator de priza Retplast, in cazul turnarii la temperatura ambianta de peste 10°C.
- Montarea caili, inclusiv balastul, se va face dupa minim 28 zile de la turnarea dalei.
- The concrete shall be continuously pored (without interruptions), including into the bracket, during max. 5 hours, using Retplast retarder, in case of pouring at environment temperature over 10°C.
- The track, including the ballast shall be mounted after minimum 28 days from the concrete slab pouring.

LEGENDA BETOANELOR/CONCRETE LIST

- Beton armat in dalele tablierelor
Reinforced concrete in the deck slabs
C 35/45-CEM I/A-S 52,5-(XC4+XF3+XA2)-A/C=0,50-Dmax.16-CI 0,20
- Beton de panta
Plain concrete in the slope layer of waterproofing system
C 25/30-CEM II/A-S 32,5-(XF3)-A/C=0,55-Dmax.16-CI 0,20
- Beton armat in stratul de protectie al hidroizolatiei si in timpan
Reinforced concrete in the protection layer of waterproofing system and in the deck tympan
C 25/30-CEM II/A-S 32,5-(XC4+XF3)-A/C=0,50-Dmax.16-CI 0,20

DALE PREFABRICATE LA ROSTUL LONGITUDINAL
DINTRE CELE DOUA TABLIERE (61buc.)
PREFABRICATED SMALL SLABS BETWEEN TWO DECKS
(61 pieces)



EXTRAS DE ARMATURA
TABLE OF REINFORCEMENT

Marca	Ø	luc.	Lung. pe buc. pe Ø	Lungime pe buc./dala
1	8	4	0,65	2,60
2	8	6	0,55	3,30
Lungimi p.l.o dala				5,90
Greutati pe metru (kg)				0,395
Greutati pt. o dala				2,35
Greutati pt. 61 dale (kg)				144,00

⊙ Ø8 OB37 L=0,35 buc./dala
⊙ Beton armat in dale prefabricate clasa C25/30
C25/30 reinforced concrete class

In cazul in care temperatura in timpul turnarii este scazuta, se vor folosi cimenturile cu rezistenta initiala mare, R si aditivi acceleratori, iar in cazul turnarii pe timp cald, se vor folosi cimenturile cu rezistenta initiala uzuala, N si aditivi intarziatori, (conform NE012/2-2010 si tabelului 2 din SR EN 197-1:2002).
When the temperature during the casting is low, cements with high initial resistance, R and accelerating additives shall be used and when it is cast during warm weather, cements with common initial resistance - N and delaying additives shall be used (according the norm NE 012/2 - 2010 and table 2 for the SR EN 197-1 : 2002).

Se interzice copierea, difuzarea, imprumutarea sau utilizarea in alte scopuri, fara permisiunea AREX Lider Company ca proprietar al desenului.
This drawing is forbidden to be copied, lent or used in other purposes than those previously approved by AREX Lider Company as its owner.

D	C	B	A
Indice	Data	Modificari Modification/Revision	Proiectant Designer
		Proiectant Approved Consultant	Proiectant Approved CFR



CLIENT / CLIENT
C.N.C.F. "C.F.R." - S.A.



CONSULTANT / CONSULTANT

Approbat Approved	Responsabil Project manager	Data Date	Semnatura Signature
Approbat Approved	Coordonator Section 1 Coordinator		
Verificat Checked	Expert Checking Expert		

SUBCONTRACTANT / SUBCONTRACTOR

Approbat Approved	Responsabil Subcontractant Responsible	Data Date	Semnatura Signature
Intocmit Elaborated	Proiectant Designer		

Reabilitarea liniei de cale ferata Braşov - Simeria, parte componentă a coridorului IV Pan European, pentru circulația trenurilor cu viteză maximă de 160 km/h, Tronsoanel: Braşov - Sighişoara
Rehabilitation of the railway line Braşov - Simeria, component Part of the IV Pan-European Corridor, for the trains circulation with maximum speed of 160 km/h, Section : Braşov - Sighişoara

Denumire desen / Drawing Title :
INTERVAL / SECTION CATA - ARCHITA
VIADUCT KM 254+449.803
PLAN COFRAJ DALE DE BETON TABLIER D=30mm
SLAB FORMWORK DECK D=30mm

Codificare / Codification System	Scara / Scale	LOT / LOT	Nr./No
E A 5 1 0 1 E 1 4 B B P V 0 3 3 3 0 1 3 0	1:50		01/01