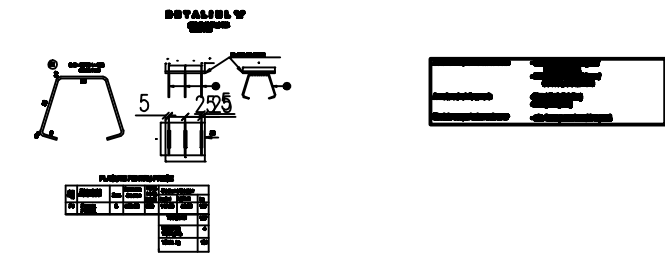


Indice	Data	Modificari	Proiectant	Approbat
1	12.2011	1	Flores Valeriu	Approbat



Se interzice copierea, difuzarea, imprumutarea sau utilizarea in alte scopuri, fara permisiunea ARES Lider Company ca proprietar al desenului.
This drawing is forbidden to be copied, lent or used in other purposes than those previously approved by ARES Lider Company as its owner.

Indice	Data	Modificari	Proiectant	Approbat
A	12.2011	1	Flores Valeriu	Approbat



CFR C.N.C.F. "C.F.R." - S.A.



Approbat	Subcontractant	Responsabil	Data	Semnatura
Approbat	Sef proiect	R. Luzzu		
Approbat	Coordonator Sechiune 1	C. Gambelli		
Verificat	Expert Cheie	V. Kalidromitis		

Approbat	Subcontractant	Responsabil	Data	Semnatura
Approbat	Responsabil Subcontractant	A. Dinulescu Stancu	02.2012	
Intocmit/Elaborat	Proiectant/Designer	Sabo Adrian	02.2012	

Reabilitarea liniei de cale ferata Brasov - Simeria, parte componenta a coridorului IV Pan European, pentru circulatia trenurilor cu viteza maxima de 160 km/h, Tronsoanel : Brasov - Sighisoara
Rehabilitation of the railway line Brasov - Simeria, component Part of the IV Pan-European Corridor, for the trains circulation with maximum speed of 160 km/h, Section : Brasov - Sighisoara
Project/Project 2004/RO19/PPA/003
Faza / Phase: P.Th. / P.Th

Denumire desen / Drawing Title : INTERVAL/SECTION ARCHITA-VANATORI
POD Km.262+004.302 L=35,00m/ARMARE CULEEA "BRASOV"
BRIDGE Km.262+004.302 L=35.00m/"BRASOV" ABUTMENTS REINFORCEMENT PLAN

Codificare / Codification System	Scara / Scale	LOT / LOT	Nr. / No
EA51 01 E 18 BB PV 03 7 2 005 0	1:100, 1:25		01 / 01