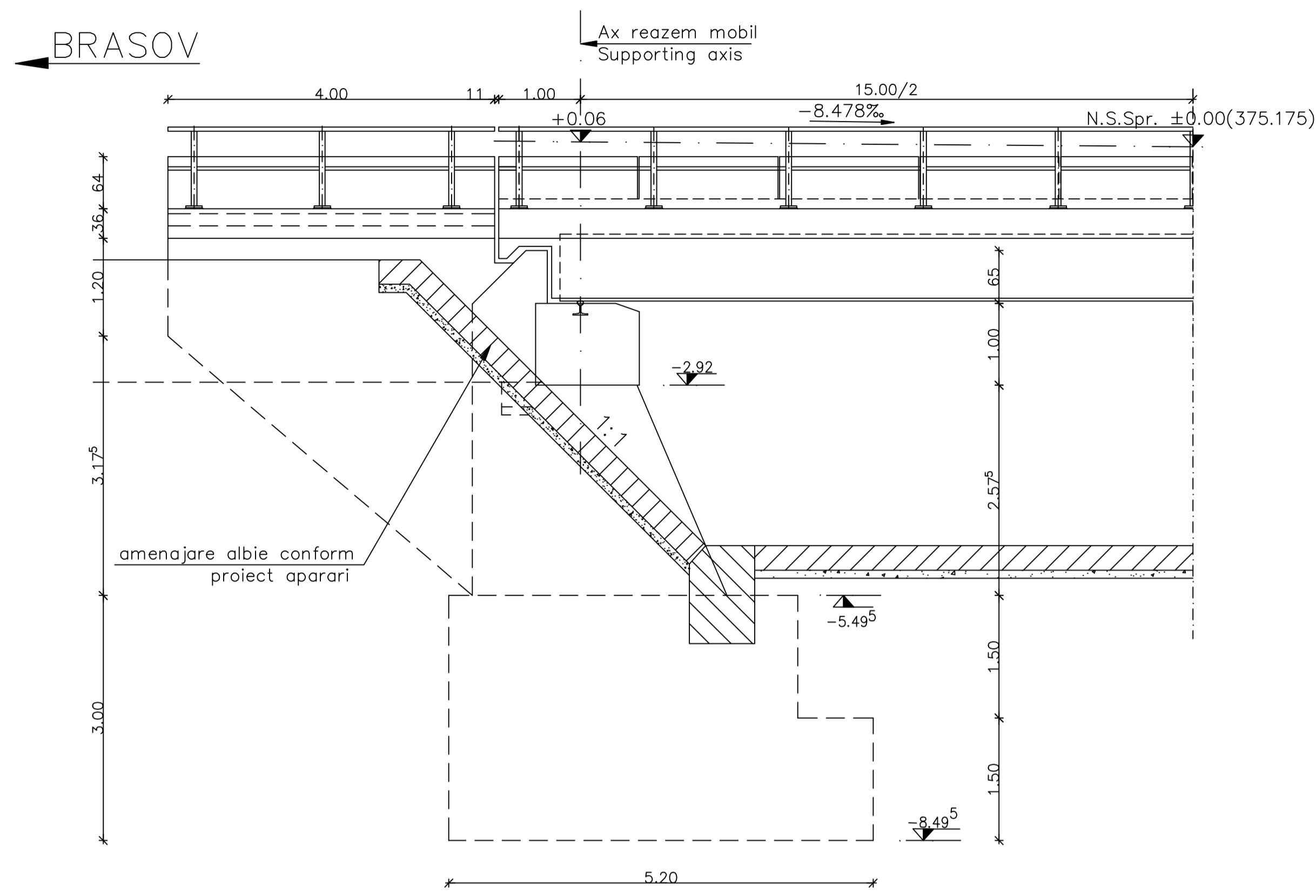
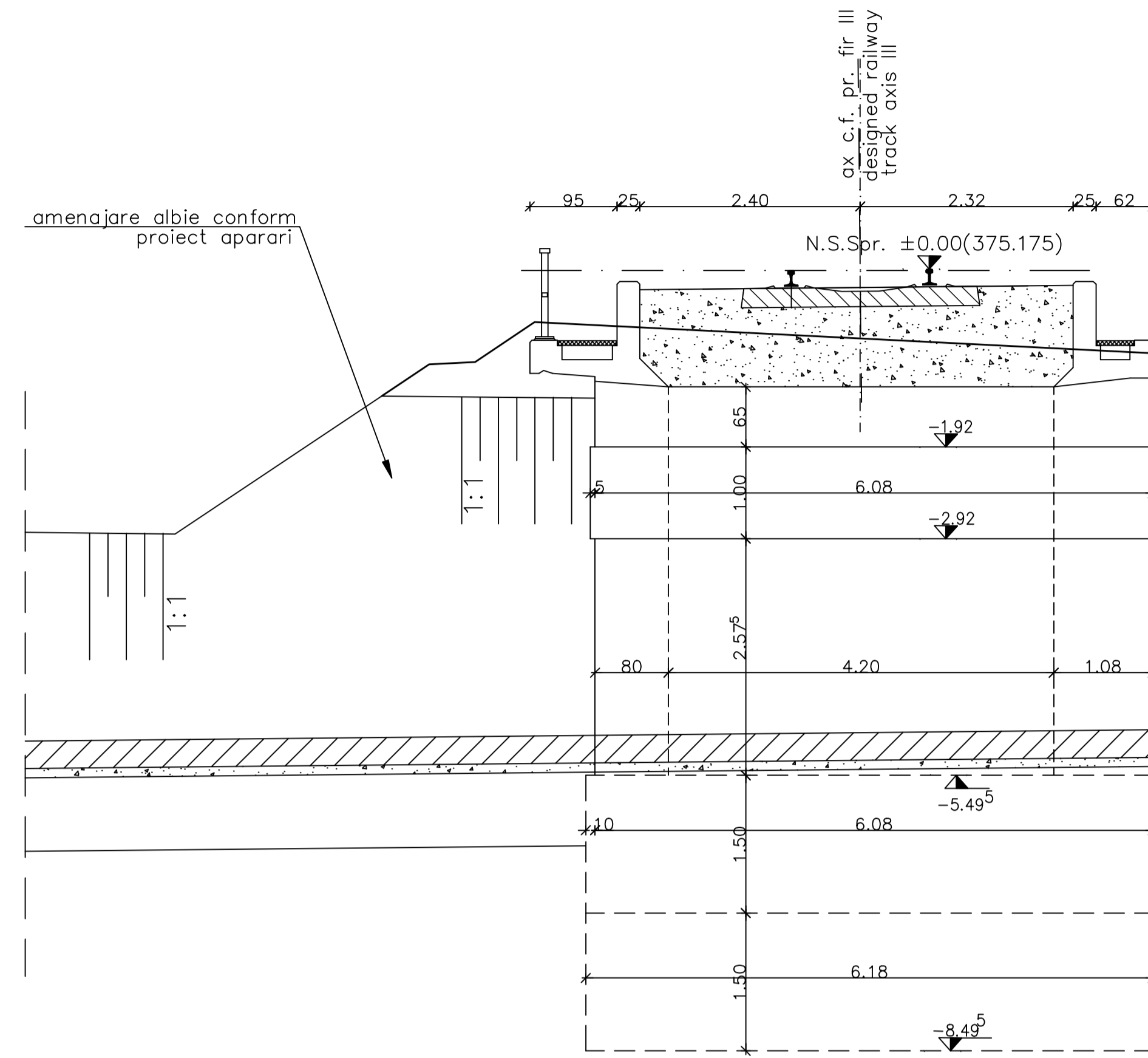


VEDERE B-B/ B-B VIEW



VEDERE A-A/ A-A VIEW



NOTA

1. Prezentul plan s-a intocmit in conformitate cu dispozitia generala.
2. Executia zidurilor intoarse si a zidului de garda se va face dupa azesarea tablierului pe reazeme.
3. La executie se vor respecta cu strictete prevederile din "Normativ pentru producerea betonului", indicativ NE 012/1-2007 si "Normativ pentru producerea betonului si executarea lucrarilor din beton, beton armat si beton precomprimat. Partea 2: Executarea lucrarilor din beton", indicativ NE 012/2-2010, iar verificarea calitatii lucrarilor si receptionarea lor se va face conform normativului C56-1985.
4. Constructia se incadreaza in categoria B de importanta. Constructii de importanta deosebita, modelul 1 de asigurare a calitatii conform HG 766/97.
5. Podul corespunde la convooiele de calcul UIC (LM71 si SW/2).

NOTE:

1. This plan has been drawn up according to the general disposition.
2. The reverted walls and the guard wall shall be carried out after putting the desk on the supports.
3. The execution will strictly comply with the provisions of "Practice code for concrete production" NE 012/1-2007 and "Practice code for the concrete production and works execution, reinforced and pre-stressed concrete - Part 2: The execution of concrete works." NE 012/2-2010, and the quality and the reception of the works shall be made accordingly to Norm C 56-1985.
4. The construction is classified in the B category of importance. Special importance constructions, model 1 for quality ensuring according to HG 766/97.
5. Bridge conveys calculation corresponds to UIC (LM71 and SW/2).

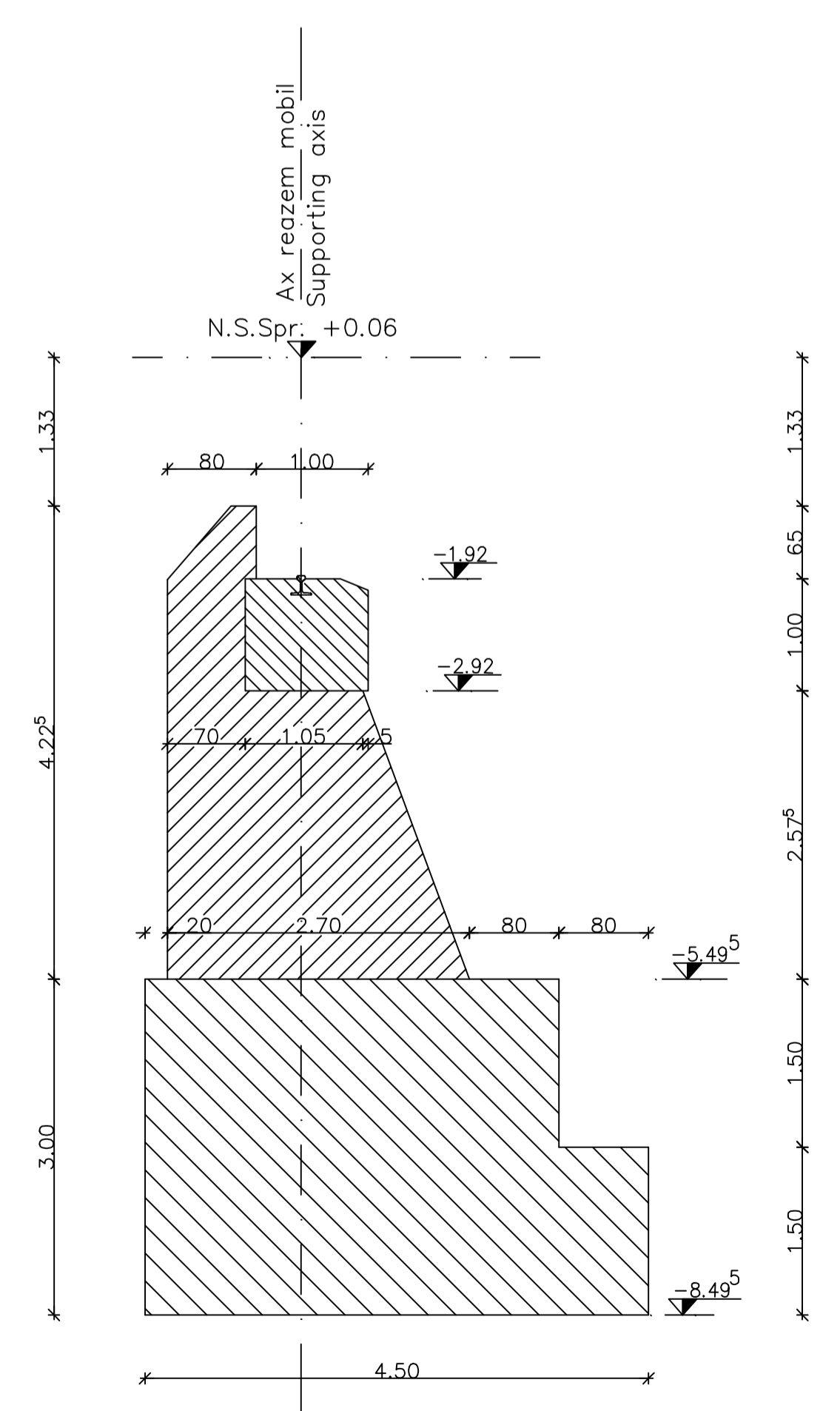
LEGENDA BETOANELOR/CONCRETE LIST

- Beton armat în cuzinete si in bancheta cuzinetilor  
Reinforced concrete in the cushions and cushions bench  
C 35/45-CEM II/A-S 42,5-(XC4+XF3+XA2)-A/C=0,50-D<sub>max</sub>16-CI 0,20
- Beton armat în elevatie si in zidurile intoarse  
Reinforced concrete in the elevation infrastructure and reverted walls  
C 25/30-Ciment H II/A-S 42,5-(XC4+XF3)-A/C=0,50-D<sub>max</sub>32-CI 0,20
- Beton simplu in fundatii  
Plain concrete in abutments foundations:  
C 25/30-Ciment H II/A-S 42,5-(XF3)-A/C=0,50-D<sub>max</sub>32-CI 0,20

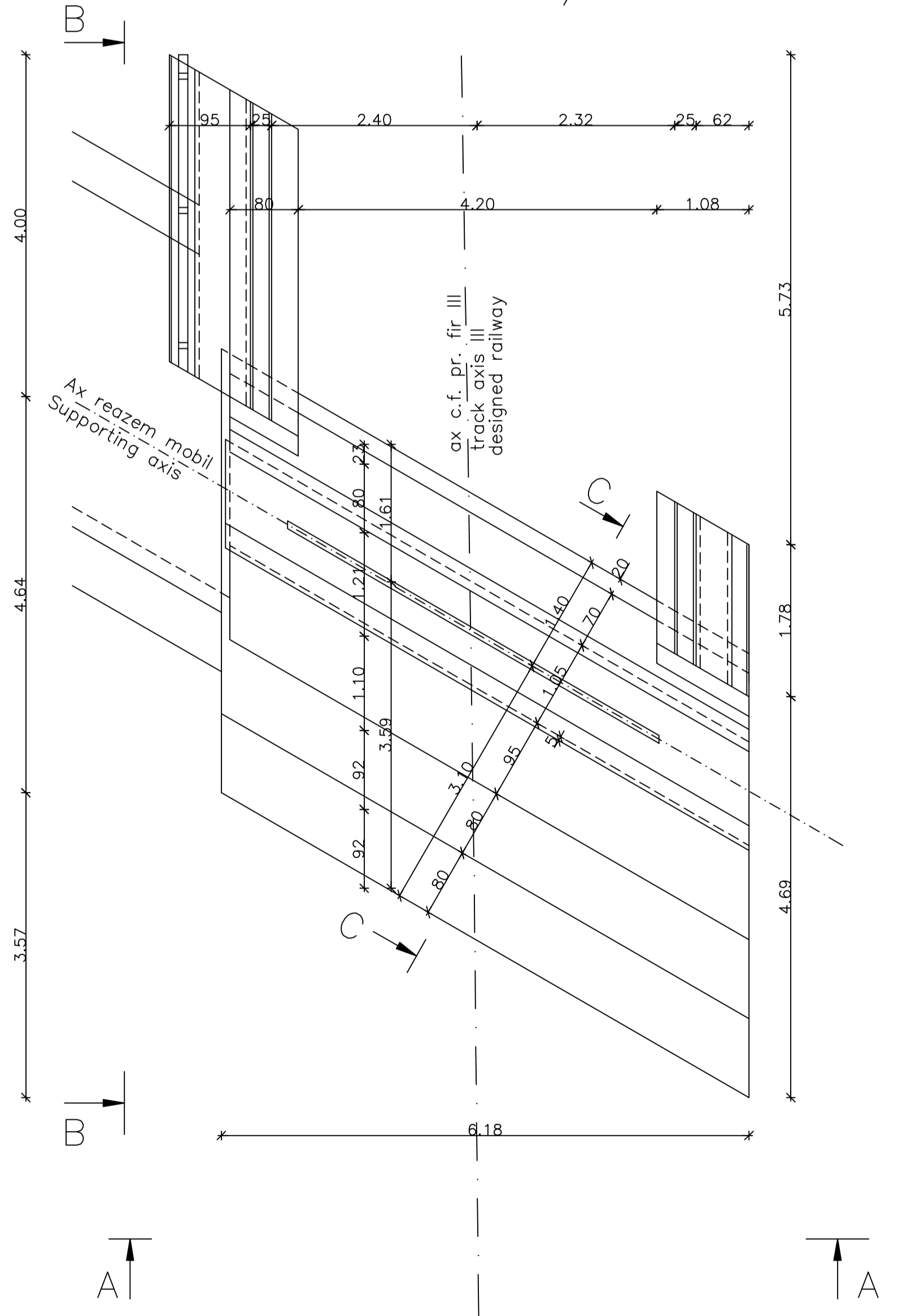
In cazul in care temperatura in timpul turnarii este scazuta, se vor folosi cimenturile cu rezistenta initiala mare, R si aditivi acceleratori, iar in cazul turnarii pe timp cald, cimenturile cu rezistenta initiala uzata, N si aditivi intarzieri (conf.NE 012/2-2010 si tabelului 2 din SR EN 197-1:2002)  
When the temperature during the casting is low, cements with high initial resistance, R and accelerating additives shall be used and when it is cast during warm weather, cements with common initial resistance, N and delaying additives shall be used (according the norm NE 012/2-2010 and table 2 for the SR EN 197-1: 2002).

Se interzice copierea, difuzarea, imprumutarea sau utilizarea in alte scopuri, fara permisiunea AREX Lider Company ca proprietar al desenului.  
This drawing is forbidden to be copied, lent or used in other purposes than those previously approved by AREX Lider Company as its owner.

SECTIUNE TRANSVERSALA C-C  
C-C CROSS SECTION



VEDERE IN PLAN/ PLAN VIEW



D					
C					
B					
A	12.2011	Revizua 1 1 Revizua	Andrei Costan		
Index	Date	Modificari Modifications	Proiectant Designer	Approbat Consultant Approved Consultant	Approbat CFR Approved CFR

**GUVERNUL ROMANIEI**  
 ROMANIAN GOVERNMENT

**PROIECT FINANȚAT DE UNIUNEA EUROPEANĂ**  
 EUROPEAN UNION FINANCED PROJECT

**C.N.C.F. "C.F.R." - S.A.**

**CLIENT / CLIENT**

**CONSULTANT / CONSULTANT**

Approbat Approved	Șef proiect Project manager	R. Liuzza	Data Date	Semnatura Signature
Approbat Approved	Coordonator Secțiune 1 Section 1 Coordinator	C. Gembelli		
Verificat Checked	Expert Cheie Checking Expert	V.Kalidromitis		

**SUBCONTRACTANT / SUBCONTRACTOR**

Approbat Approved	Responsabil Subcontractant Subcontractant Responsible	A. Dinulescu Stancu	11.2011	
Elaborat Elaborated	Proiectant Designer	Andrei Costan	11.2011	

Reabilitarea liniei de cale ferata Brasov - Simeria, parte componentă a coridorului IV Pan European, pentru circulația trenurilor cu viteza maximă de 160 km/h, Tronsoanel: Brasov - Sighisoara  
 Rehabilitation of the railway line Brasov - Simeria, component Part of the IV Pan-European Corridor, for the trains circulation with maximum speed of 160 km/h, Section: Brasov - Sighisoara

**Proiect/Project**  
 2004/RQ18/PPA003  
 Fașa / Phase:  
 P.Th. / T.D.

Denumire desen / Drawing Title: **Interval Archita - Vanatori**  
**Pod/Bridge Km 270+941.472 - D=15.00m**  
**PLAN COFRAJ CULEEA BRASOV CALE SIMPLA, LINIA 3**  
**ABUTMENT BRASOV SINGLE TRACK, TRACK 3 FORMWORK**  
**DRAWING**

Codificare / Codification System	Șara / Scale 1:20	LOT / LOT	Nr. / No 01 / 01
----------------------------------	----------------------	-----------	---------------------

**E A 5 1 0 1 E 1 6 B B P V 0 4 4 2 0 1 0 1**