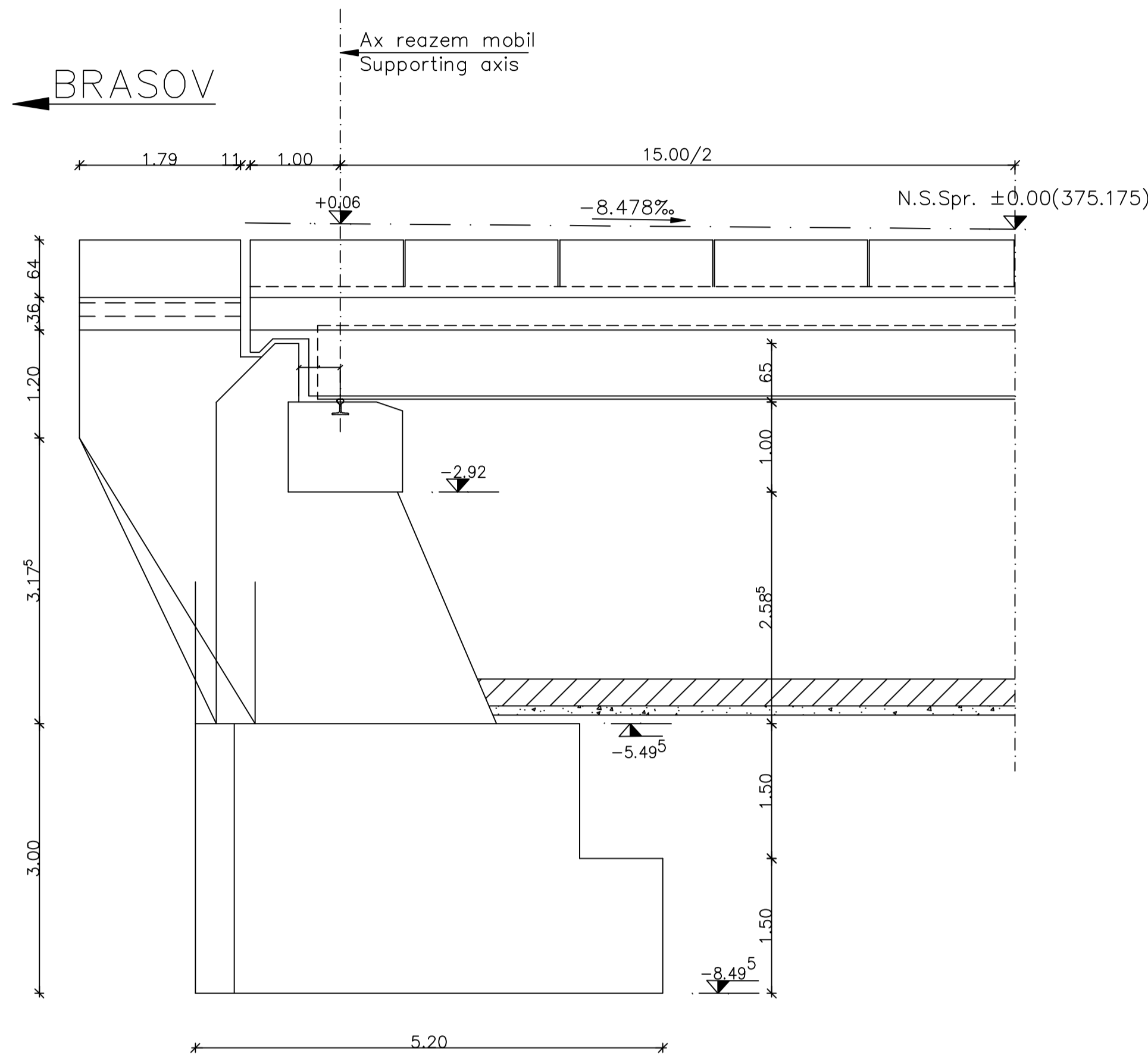
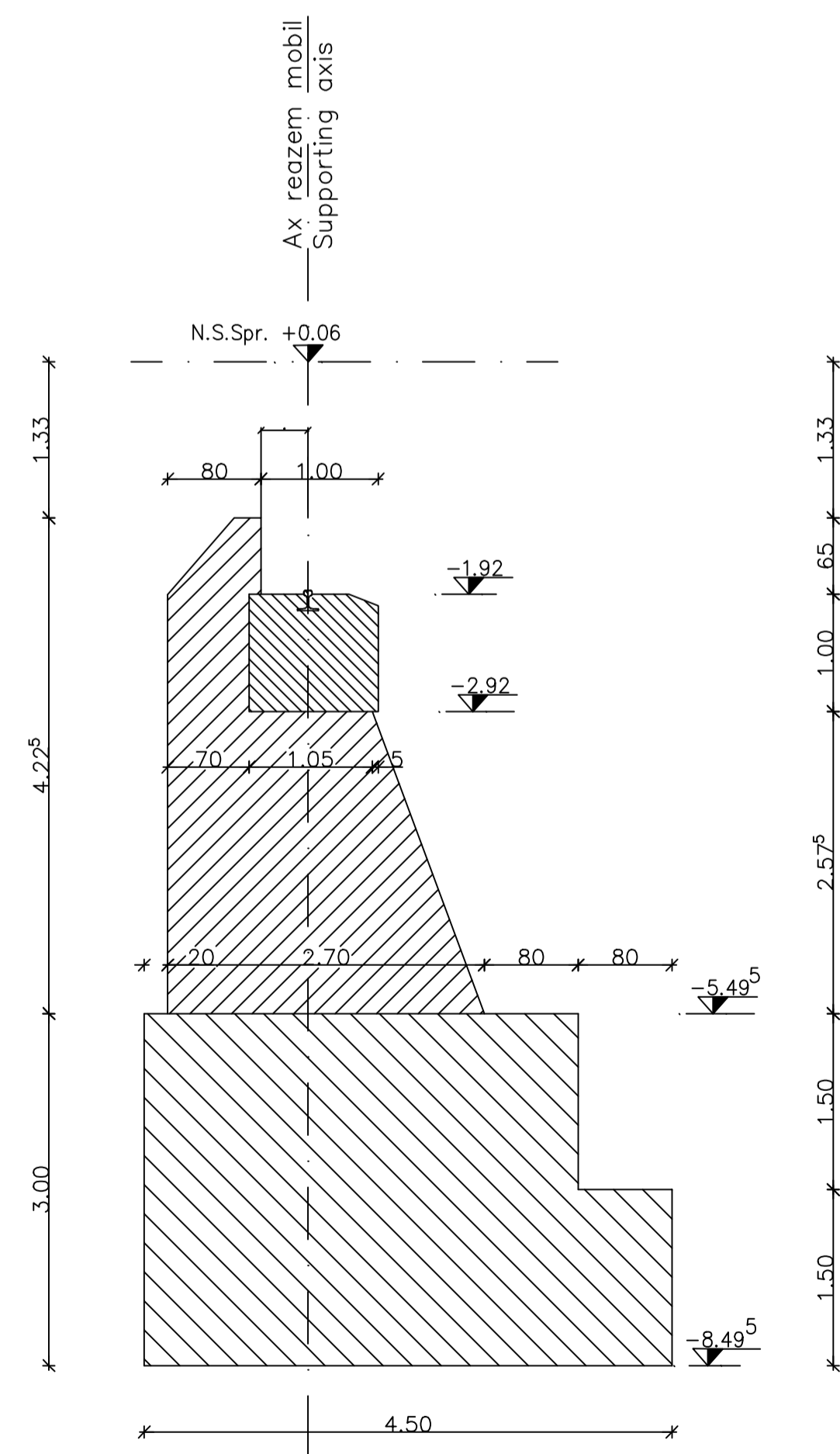


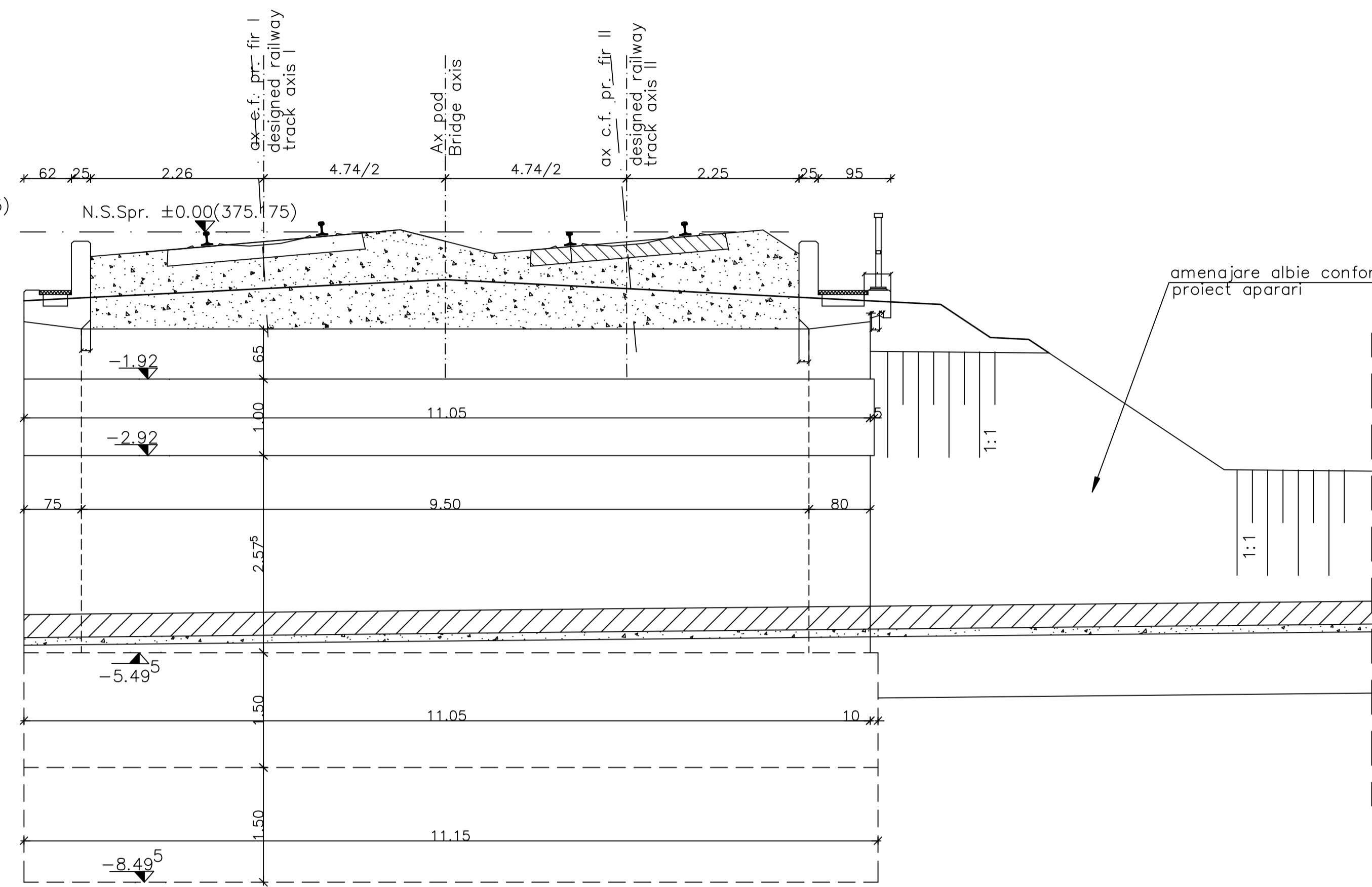
VEDERE B-B/ B-B VIEW



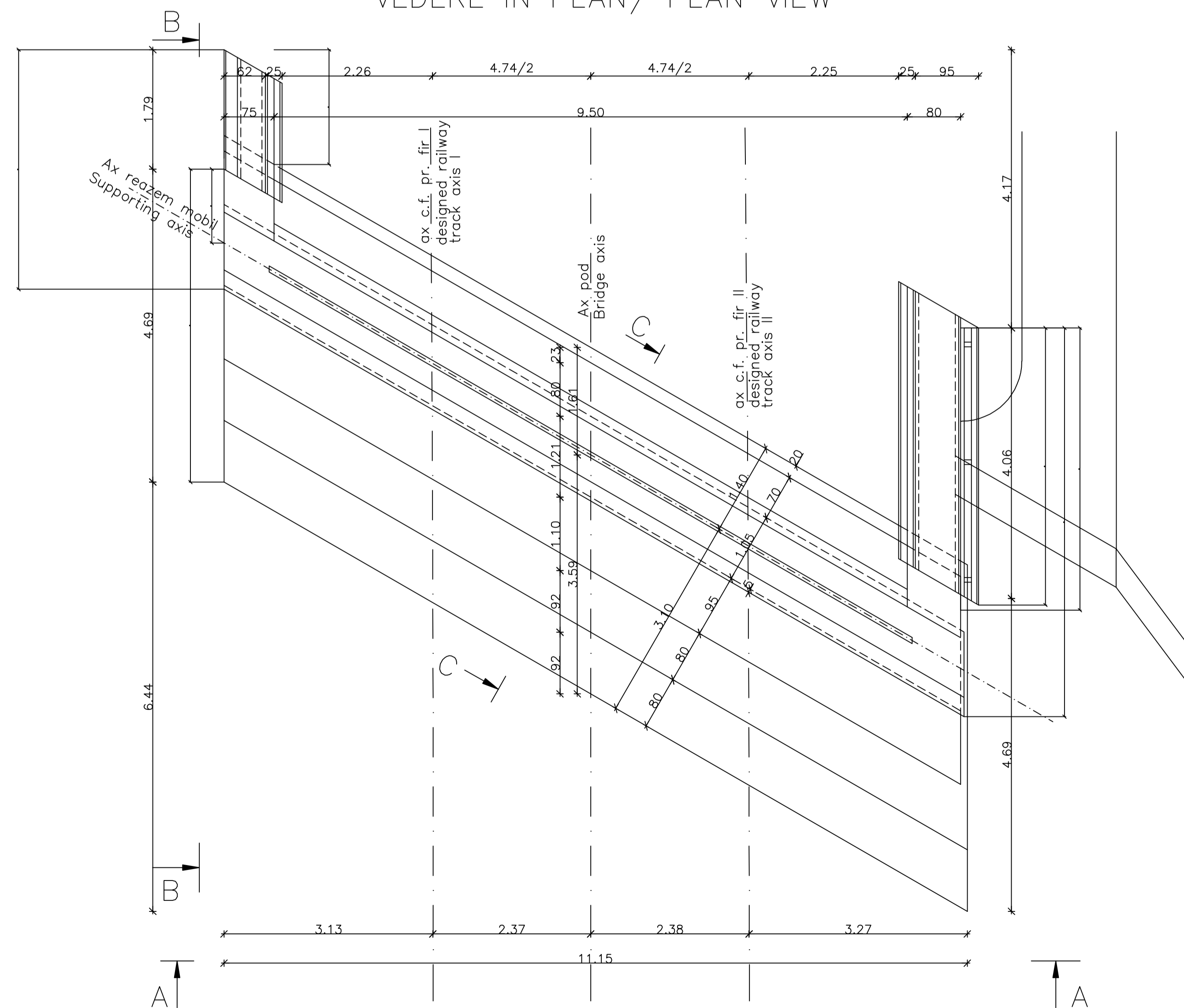
SECTIUNE TRANSVERSALA C-C/  
C-C CROSS SECTION



VEDERE A-A/ A-A VIEW



VEDERE IN PLAN/ PLAN VIEW



NOTA

1. Prezentul plan s-a intocmit in conformitate cu dispozitia generala.
2. Executia zidurilor intorase si a zidului de garda se va face dupa asezarea tablanelor pe reazeme.
3. La executie se vor respecta cu stricte prevederile din "Normativ pentru producerea betonului", indicativ NE 012/1-2007 si "Normativ pentru producerea betonului si executarea lucrarilor din beton, beton armat si beton precomprimit. Partea 2: Executarea lucrarilor din beton", indicativ NE 012/2-2010, iar verificarea calitatii lucrarilor si receptionarea lor se va face conform normativului C56-1985.
4. Constructia se incadreaza in categoria B de importanta. Constructii de importanta deosebita, modelul 1 de asigurare a calitatii conform HG 766/97.
5. Podul corespunde la convoaiele de calcul UIC (LM71 si SW/2).

NOTE:

1. This plan has been drawn up according to the general disposition.
2. The reverted walls and the guard wall shall be carried out after putting the desk on the supports.
3. The execution will strictly comply with the provisions of "Practice code for concrete production" NE 012/1-2007 and "Practice code for the concrete production and works execution, reinforced and pre-stressed concrete - Part 2: The execution of concrete works." NE 012/2-2010, and the quality and the reception of the works shall be made accordingly to Norm C 56-1985.
4. The construction is classified in the B category of importance. Special importance constructions, model 1 for quality ensuring according to HG 766/97.
5. Bridge conveys calculation corresponds to UIC (LM71 and SW/2).

LEGENDA BETOANELOR/CONCRETE LIST

- Beton armat in cuzineti si in bancheta cuzinetilor  
Reinforced concrete in the cushions and cushions bench  
C 35/45-CEM II/A-S 42,5-(XC4+XF3+XA2)-A/C=0,50-B<sub>16</sub>-Cl 0,20
- Beton armat in elevatie si in zidurile intoarse  
Reinforced concrete in the elevation infrastructure and reverted walls  
C 25/30-Ciment H II/A-S 42,5-(XC4+XF3)-A/C=0,50-B<sub>32</sub>-Cl 0,20
- Beton simplu in fundatii:  
Plain concrete in abutments foundations:  
C 25/30-Ciment H II/A-S 42,5-(XF3)-A/C=0,50-B<sub>16</sub>-Cl 0,20

In cazul in care temperatura in timpul turnarii este scazuta, se vor folosi cimenturile cu rezistenta initiala mare, R si aditivi acceleratori, iar in cazul turnarii pe timp calduros, cimenturile cu rezistenta initiala uzuala, N si aditivi intarziatori (conf.NE 012/2-2010 si tabelului 2 din SR EN 197-1:2002)  
When the temperature during the casting is low, cements with high initial resistance, R and accelerating additives shall be used and when it is cast during warm weather, cements with common initial resistance, N and delaying additives shall be used (according the norm NE 012/2-2010 and table 2 for the SR EN 197-1: 2002).

Se interzice copierea, difuzarea, imprumutarea sau utilizarea in alte scopuri, fara permisiunea AREX Lider Company ca proprietar al desenului.  
This drawing is forbidden to be copied, lent or used in other purposes than those previously approved by AREX Lider Company as its owner.

D					
C					
B					
A	12.2011	Revizie 1 1 Revision	Andrei Costan		
Index	Date	Modificari Modification/Revision	Proiectant Designer	Aprobat Consultant Approved Consultant	Aprobat CFR Approved CFR
GVERNUL ROMANIEI ROMANIAN GOVERNMENT		PROIECT FINANAT DE UNIUNEA EUROPEAN A EUROPEAN UNION FINANCED PROJECT			
CLIENT / CLIENT					
CONSULTANT / CONSULTANT					
Aprobat	06/10/2011	Proiect manager	R. Lizza	Data	Semnatura
Aprobat	06/10/2011	Coordonator Sectiune 1	C. Gembelli		
Verificat		Expert Chief	V. Kallidromitis		
Checkat		Checking Expert			
SUBCONTRACTANT / SUBCONTRACTOR					
Aprobat	11.2011	Responsabil Subcontractant	A. Dinulescu Stancu	11.2011	
Elaborat		Proiectant	Andrei Costan	11.2011	
Reabilitarea liniei de cale ferata Brasov - Simeria, parte componenta a cordonului IV Pan European, pentru circulatia trenurilor cu viteza maxima de 160 km/h, Tronsoanel: Brasov - Slighioara					
Rehabilitation of the railway line Brasov - Simeria, component Part of the IV Pan-European Corridor, for the trains circulation with maximum speed of 160 km/h, Section: Brasov - Slighioara					
Denumire desen / Drawing Title: Interval Archita - Vanatori					
Pod/Bridge Km 270+941.472 - D=15.00m					
PLAN COFRAJ CULEEA BRASOV CALE DUBLA, LINIILE 1 SI 2					
ABUTMENT BRASOV DOUBLE TRACK, TRACKS 1 AND 2 FORMWORK DRAWING					
Codificare / Codification System		Scara / Scale	LOT / LOT	Nr. / No	
E A 5 1 0 1 E 1 6 B B P V 0 4 4 2 0 0 3 1		1:20		01 / 01	