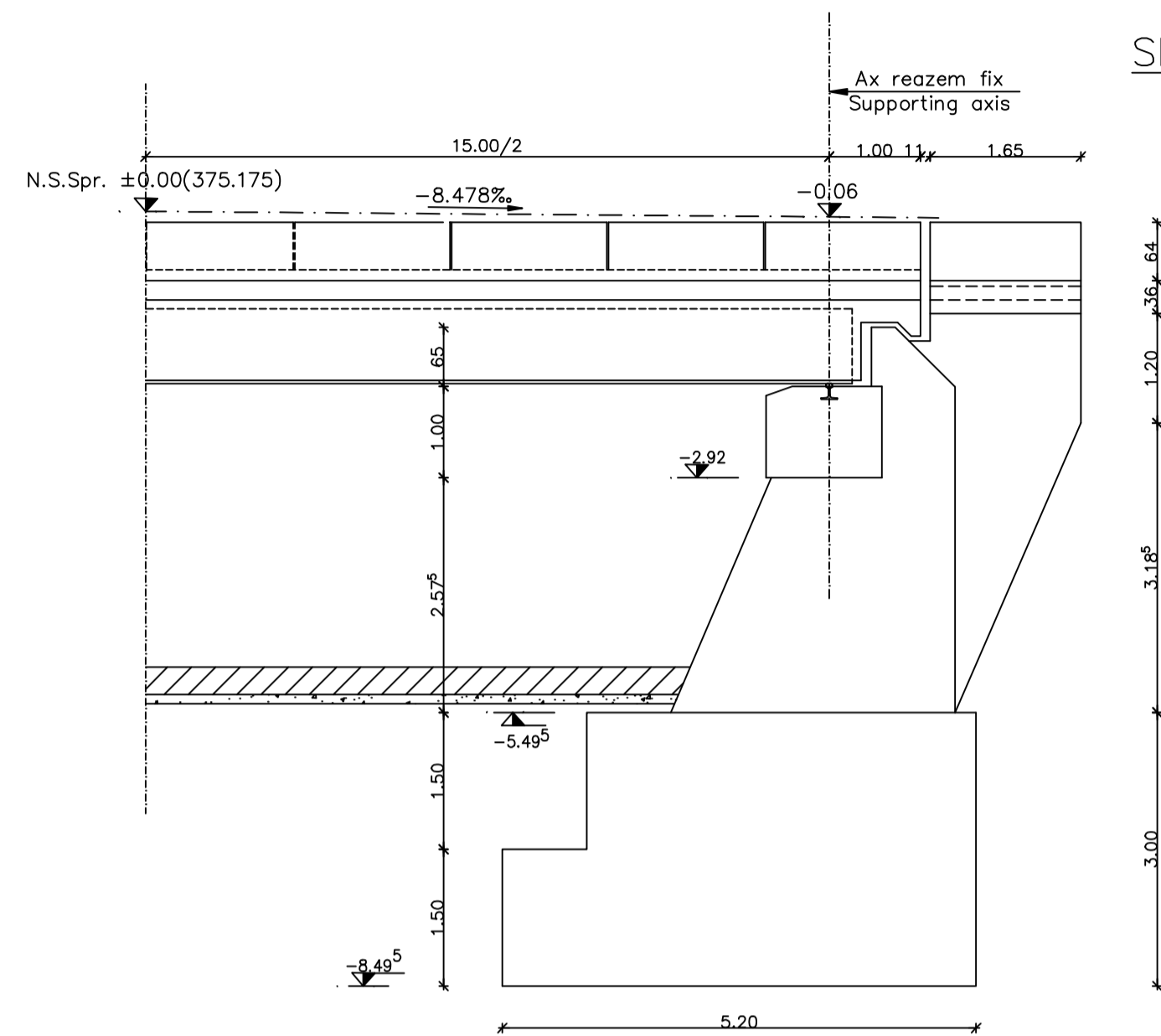
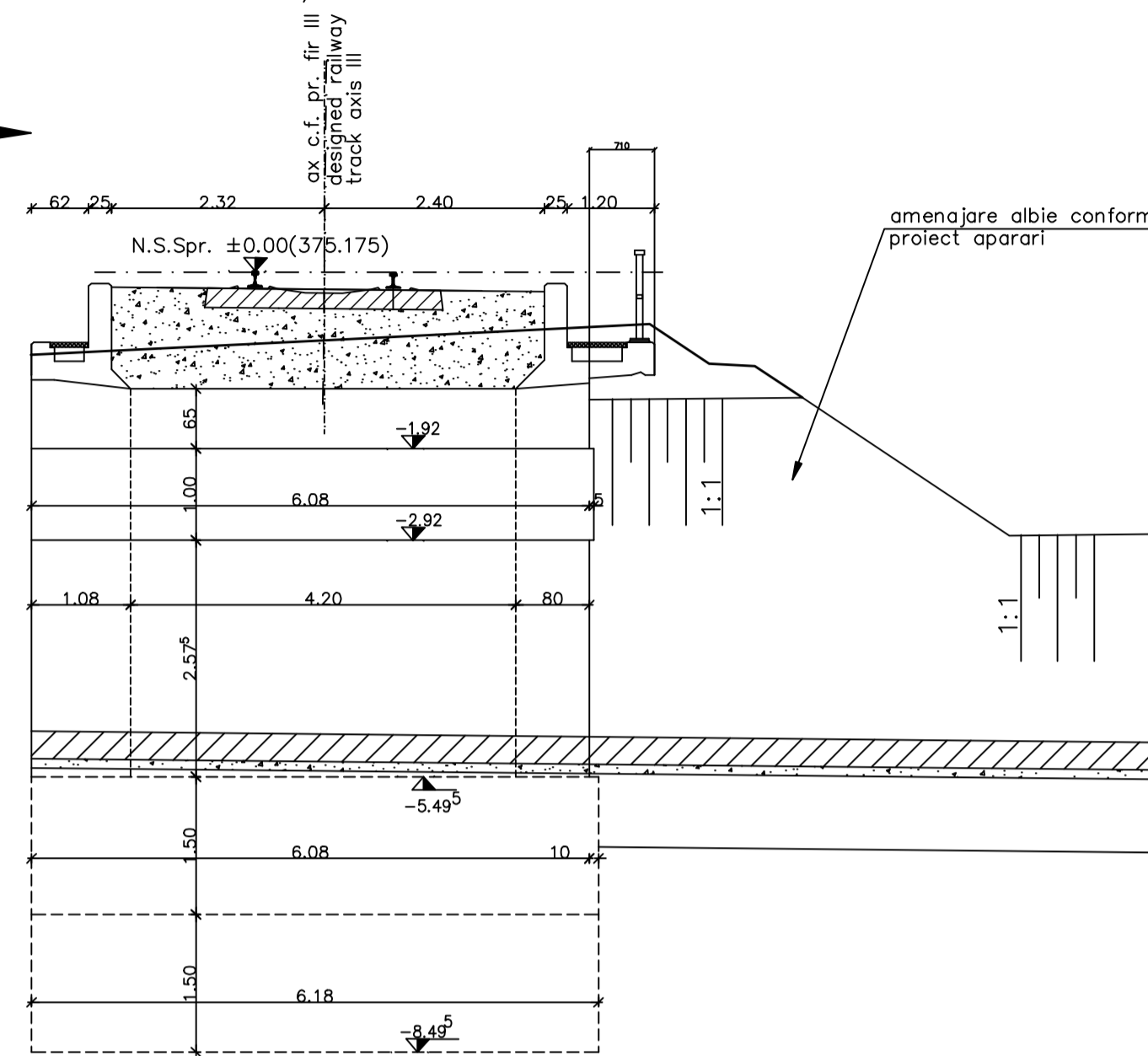


VEDERE B-B/ B-B VIEW



VEDERE A-A/ A-A VIEW

SIGHISOARA



**NOTA**

1. Prezentul plan s-a intocmit in conformitate cu dispozitia generala.
2. Executia zidurilor intoarse si a zidului de garda se va face dupa osezarea tablierului pe reazeme.
3. La executie se vor respecta cu strictete prevederile din "Normativ pentru producerea betonului", indicativ NE 012/1-2007 si "Normativ pentru producerea betonului si executarea lucrarilor din beton, beton armat si beton prescomprimat. Partea 2: Executarea lucrarilor din beton", indicativ NE 012/2-2010, iar verificarea calitatii lucrarilor si receptionarea lor se va face conform normativului C56-1985.
4. Constructia se incadreaza in categoria B de importanta. Constructii de importanta deosebita, modelul 1 de asigurare a calitatii conform HG 766/97.
5. Podul corespunde la convaletele de calcul UIC (LM71 si SW/2).

**NOTE:**

1. This plan has been drawn up according to the general disposition.
2. The reverted walls and the guard wall shall be carried out after putting the desk on the supports.
3. The execution will strictly comply with the provisions of "Practice code for concrete production" NE 012/1-2007 and "Practice code for the concrete production and works execution, reinforced and pre-stressed concrete - Part 2: The execution of concrete works." NE 012/2-2010, and the quality and the reception of the works shall be made accordingly to Norm C 56-1985.
4. The construction is classified in the B category of importance. Special importance constructions, model 1 for quality ensuring according to HG 766/97.
5. Bridge conveys calculation corresponds to UIC (LM71 and SW/2).

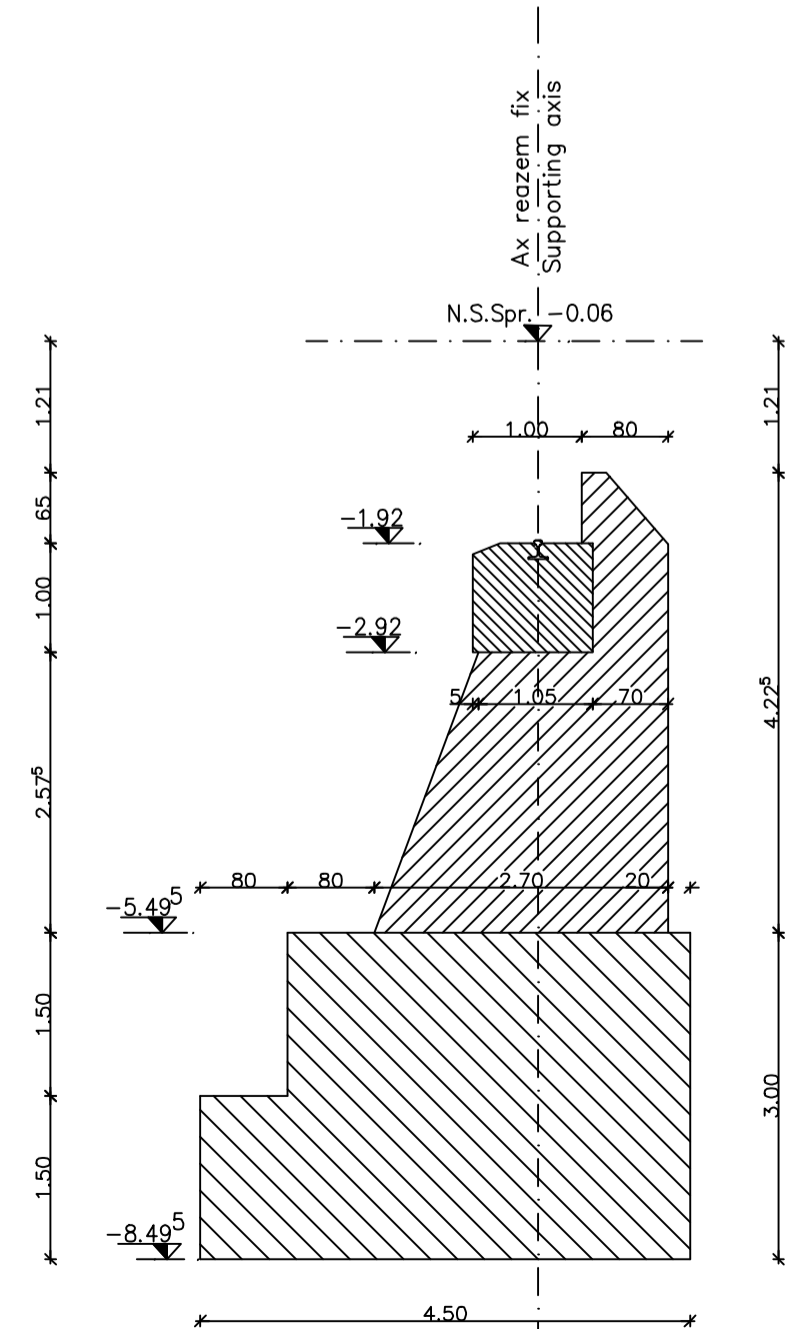
**LEGENDA BETOANELOR/CONCRETE LIST**

- Beton armat în cuzinete si în bancheta cuzinetilor  
Reinforced concrete in the cushions and cushions bench  
C 35/45-CEM II/A-S 42,5-(XC4+XF3+XA2)-A/C=0,50-D<sub>max</sub>16-CI 0,20
- Beton armat în elevatie si în zidurile intoarse  
Reinforced concrete in the elevation infrastructure and reverted walls  
C 25/30-Ciment H II/A-S 42,5-(XC4+XF3)-A/C=0,50-D<sub>max</sub>32-CI 0,20
- Beton simplu în fundatii  
Plain concrete in the abutments foundations:  
C 25/30-Ciment H II/A-S 42,5-(XF3)-A/C=0,50-D<sub>max</sub>32-CI 0,20

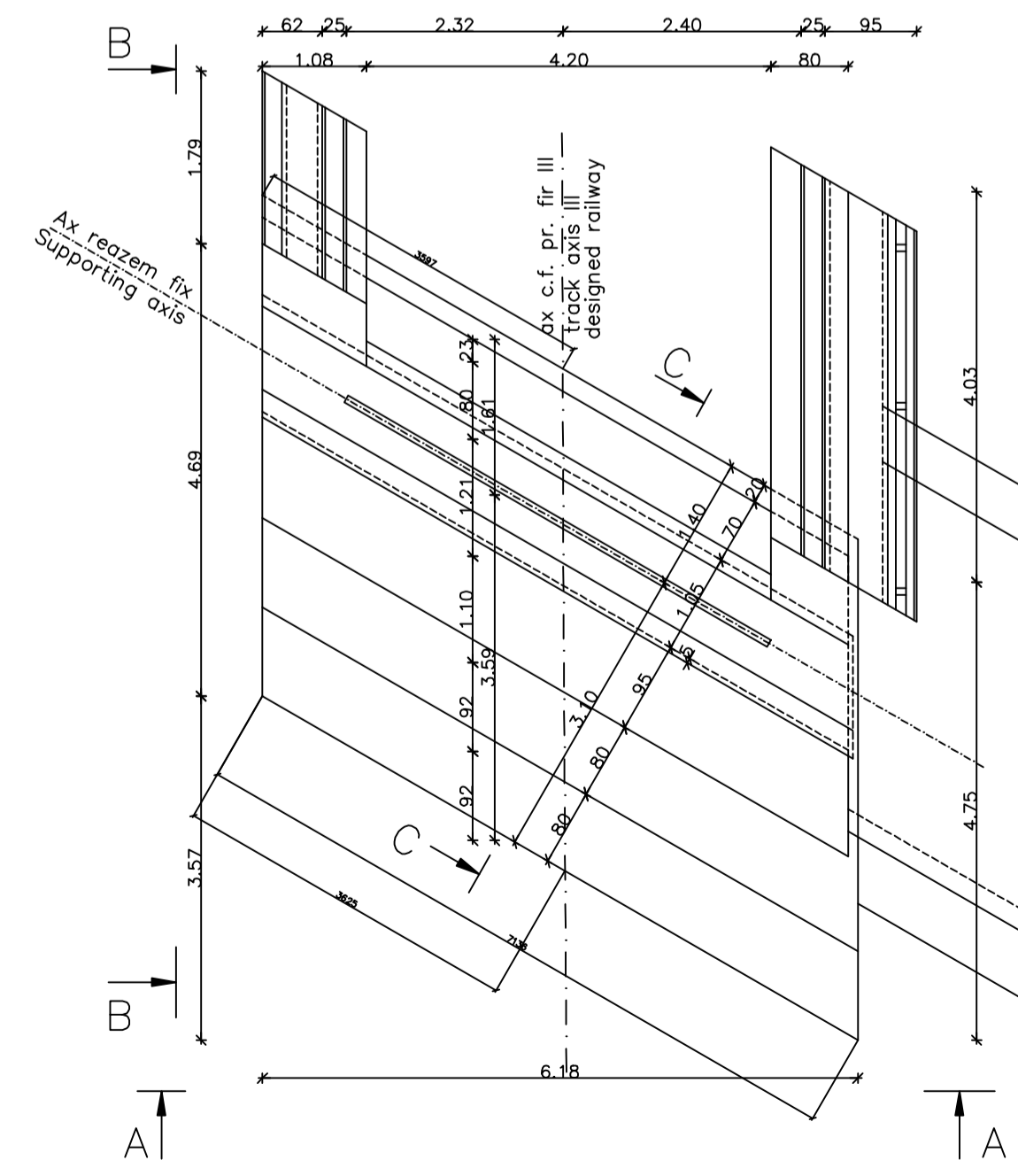
In cazul în care temperatura în timpul turnării este scazuta, se vor folosi cimenturile cu rezistenta initiala mare, R si aditivi acceleratori, iar în cazul turnării pe timp cald, cimenturile cu rezistenta initiala uzuala, N si aditivi intarziatori (conf.NE 012/2-2010 si tabelului 2 din SR EN 197-1:2002)  
When the temperature during the casting is low, cements with high initial resistance, R and accelerating additives shall be used and when it is cast during warm weather, cements with common initial resistance, N and delaying additives shall be used (according to the norm NE 012/2-2010 and table 2 for the SR EN 197-1: 2002).

Se interzice copierea, difuzarea, imprumutarea sau utilizarea în alte scopuri, fara permisiunea ARES Lider Company ca proprietar al desenului.  
This drawing is forbidden to be copied, lent or used in other purposes than those previously approved by ARES Lider Company as its owner.

SECTIUNE TRANSVERSALA C-C  
C-C CROSS SECTION



VEDERE IN PLAN/ PLAN VIEW



D					
C					
B					
A	12.2011	Revizua 1 1 Revizua	Andrei Costan	Proiectant Designer	Proiectat Approved
Index	Date	Modificari Modification/Revision	Proiectant Designer	Proiectat Approved	Proiectat Approved
GUVERNUL ROMANIEI ROMANIAN GOVERNMENT		PROIECT FINANȚAT DE UNIUNEA EUROPEANĂ EUROPEAN UNION FINANCED PROJECT			
CLIENT / CLIENT		C.N.C.F. "C.F.R." - S.A.			
GRUPPO FERROVIE DELLO STATO John Venturoli leader		FLAMEN + BERATEN GmbH Consulting Engineers		Consulting Engineers	
CONSULTANT / CONSULTANT					
Approve		Supervisor		Date	Semnatura Signature
Approval		Project manager	R. Luzza		
Approval		Coordinator Subcontractor	C. Gambelli		
Verified		Report Check	V.Kellidromita		
SUBCONTRACTANT / SUBCONTRACTOR					
Approve		Responsible Subcontractor	A. Dinulescu Stancku	11.2011	
Intocmit		Proiectant	Andrei Costan	11.2011	
Elaborat		Designer			
Reabilitarea liniei de cale ferata Braşov - Simeria, parte componentă a coridorului IV Pan European, pentru circulaţie în trenurilor cu viteză maximă de 160 km/h, Tronsoanel : Braşov - Sighişoara Rehabilitation of the railway line Braşov - Simeria, component Part of the IV Pan-European Corridor, for the trains circulation with maximum speed of 160 km/h, Section : Braşov - Sighişoara					
Denumire desen / Drawing Title : Interval Archita - Vanatori Pod/Bridge Km 270+941.472 - D=15.00m <b>PLAN COFRAJ CULEEA SIGHISOARA CALE SIMPLA, LINIA 3</b> <b>ABUTMENT SIGHISOARA SINGLE TRACK, TRACK 3 FORMWORK</b> <b>DRAWING</b>					
Codificare / Codification System		Scara / Scale	1:50	LOT/LOT	Nr./No 01/01
E	A	B	1	8	B
P	V	0	4	4	2
0	1	1			