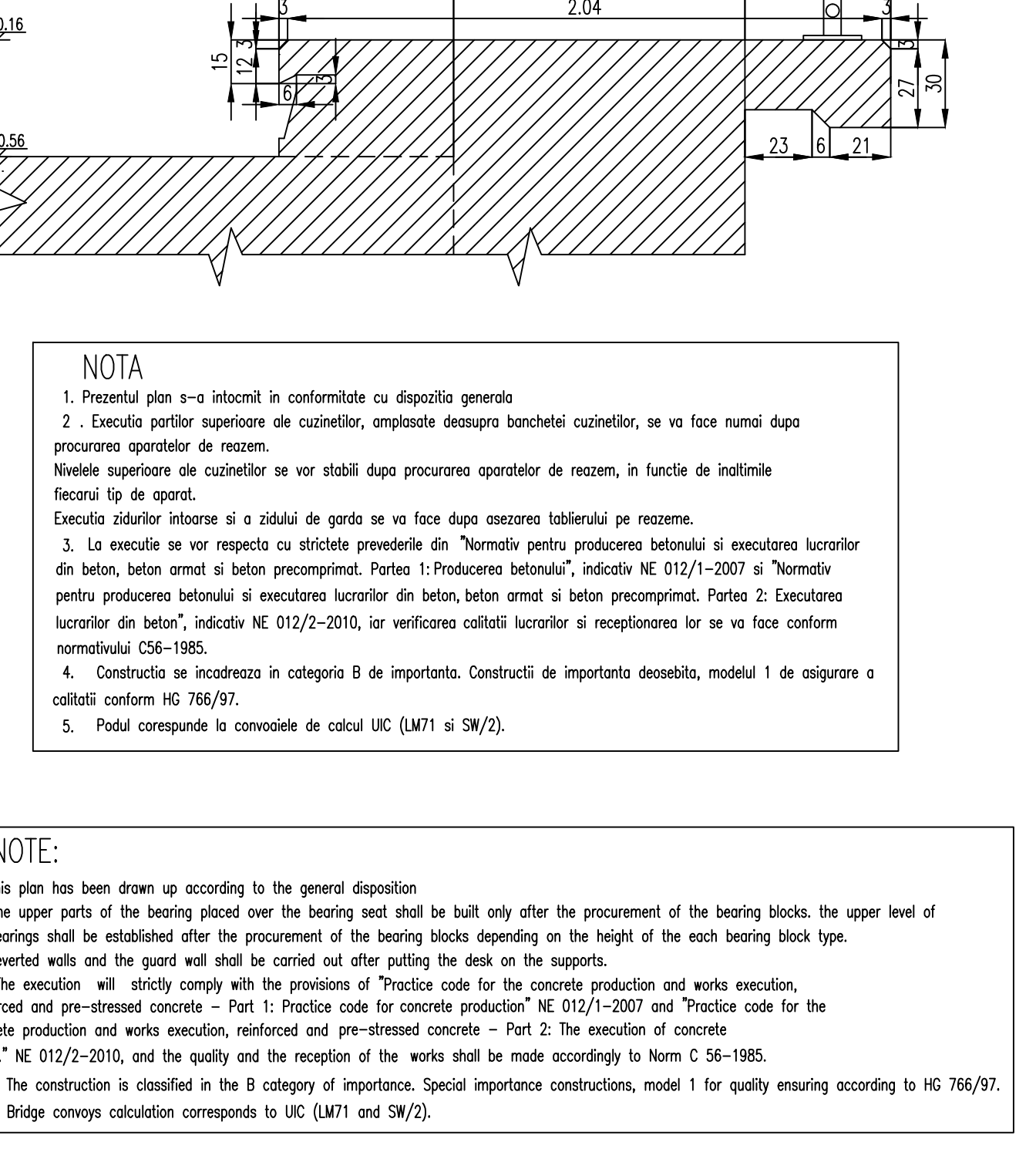
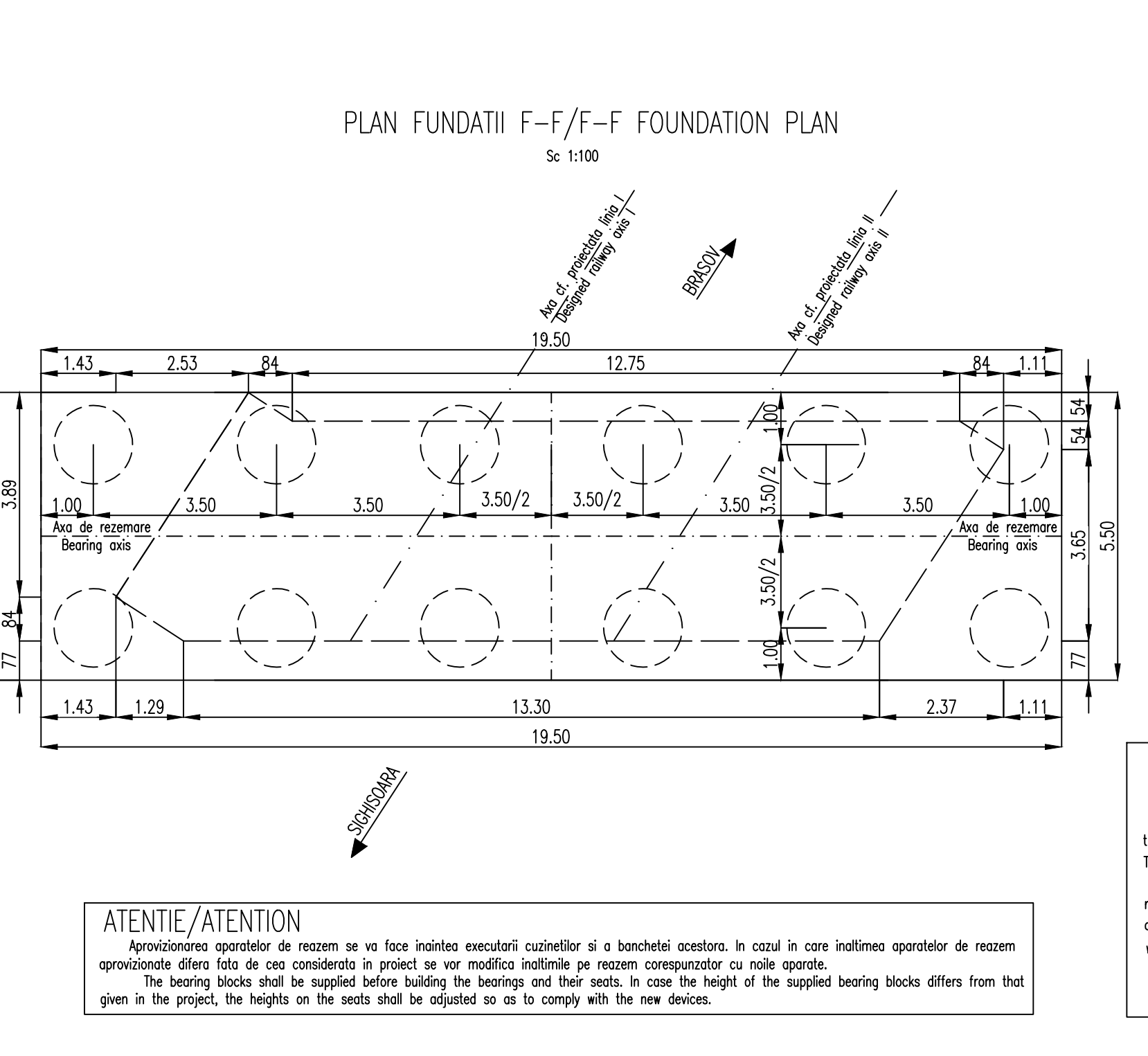
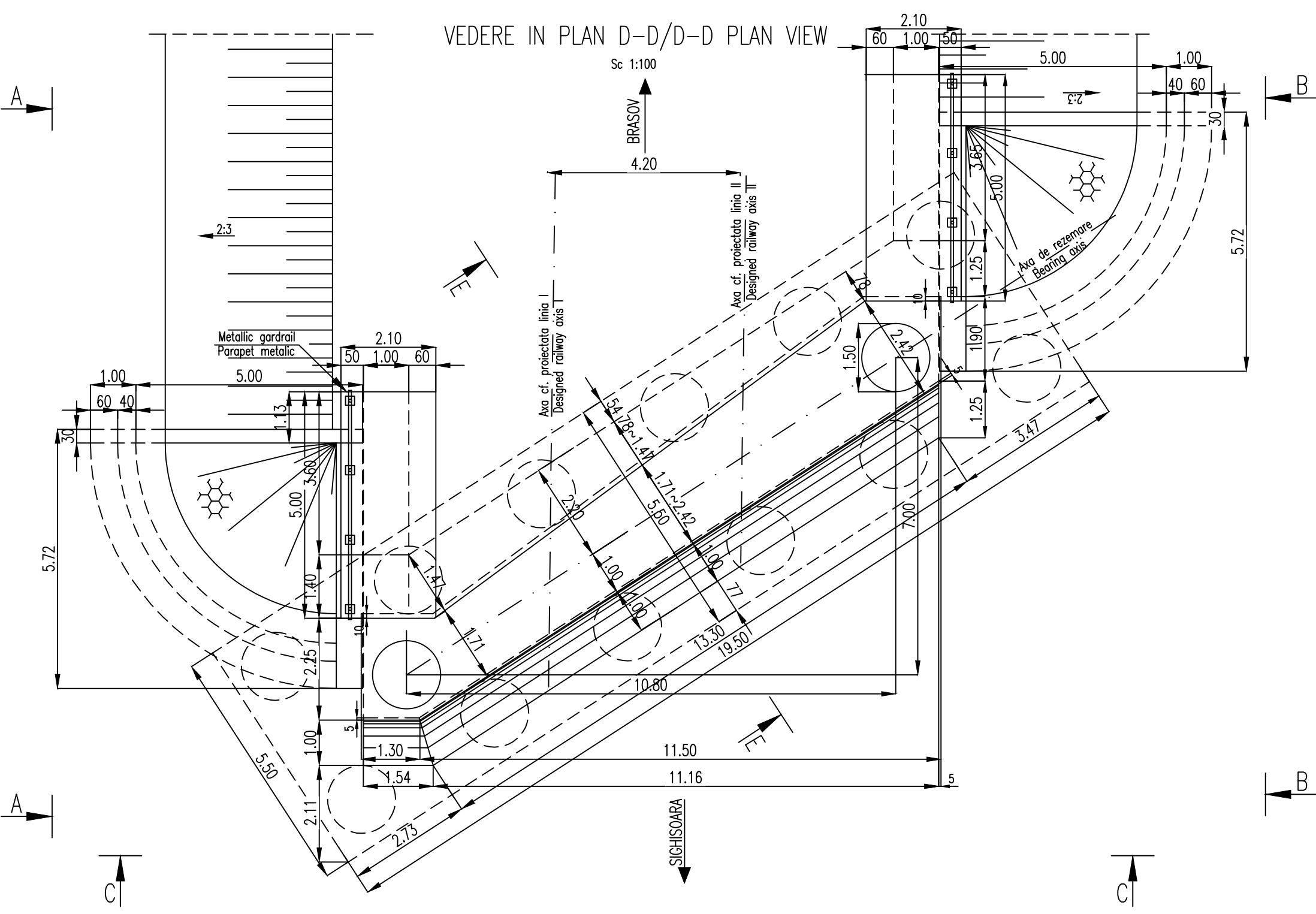
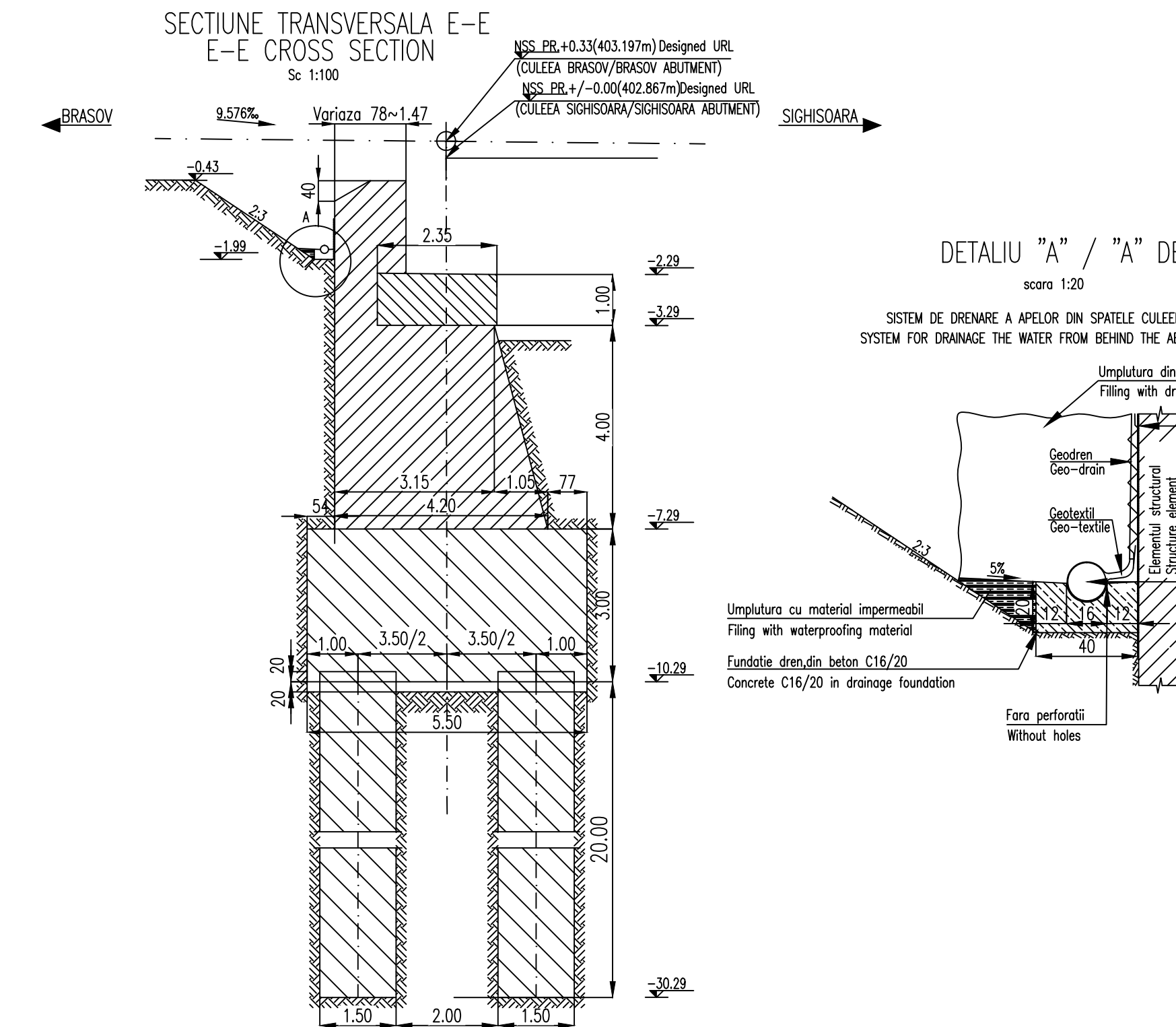


LEGENDA BETOANELOR/CONCRETE LIST

	Beton armat in bancheta cuzinetilor Reinforced concrete in the cushions and cushions bench C 35/45-CEM I/A-S 52,5-(XC4+XF3+XA2)-A/C=0,50-D ₁₆ -Cl 0,20
	Beton armat in elevatie si in zidurile intorse Reinforced concrete in the elevation infrastructure and reverted walls C 25/30-Ciment H II/A-S 42,5-(XC4+XF3)-A/C=0,50-D ₁₆ -Cl 0,20
	Beton simplu in fundatii Plain concrete in abutments foundations: C 25/30-Ciment H II/A-S 42,5-(XF3)-A/C=0,50-D ₁₆ -Cl 0,20
	Beton in stratul de protectie a hidroizolatiei Concrete in the protection layer of the waterproofing C 25/30-Ciment II/A-S 32,5-(XC4+XF3)-A/C=0,50-D ₁₆ -Cl 0,20

In cazul in care temperatura in timpul turnarii este scazuta, se vor folosi cimenturile cu rezistenta initiala mare, R si aditivi acceleratori, iar in cazul turnarii pe timp cald, cimenturile cu rezistenta initiala uzuala, N si aditivi intarziatori (conf. NE 012/2-2010 si tabelului 2 din SR EN 197-1:2002).
When the temperature during the casting is low, cements with high initial resistance, R and accelerating additives shall be used and when it is cast during warm weather, cements with common initial resistance, N and delaying additives shall be used (according the norm NE 012/2-2010 and table 2 for the SR EN197-1:2002).



Se interzice copierea, difuzarea, imprumutarea sau utilizarea in alte scopuri, fara permisiunea ARES LIDER COMPANY ca proprietar al desenului.
This drawing is forbidden to be copied, lent or used in other purposes than those previously approved by ARES LIDER COMPANY as its owner.

D				
C				
B				
A	12.2011	Revizia 1 1.Revision	Olar Mihai Adrian	
Index	Date	Modificare Modification/Revision	Proiectant Designer	Aprobat CFR Approved Consultant
				Aprobat CFR Approved CFR



ITALFERR	Scot Wilson	OBERMEYER	TECNIC
GRUPPO FERROVIE DELLO STATO	Joint Venture leader	PLANEN + BERATEN GmbH	Consulting Engineers

CONSULTANT / CONSULTANT		Data Date	Semnatura Signature
Aprobat Approved	Sef proiect Project manager		R. Liuzza
Aprobat Approved	Coordonator Sectiune 1 Section 1 Coordinator		C. Gambelli
Verificat Checked	Expert Cheie Key Expert		V.Kallidromitis

SUBCONTRACTANT / SUBCONTRACTOR		AREX
Aprobat Approved	Responsabil Subcontractant Subcontractant Responsible	A. Dinulescu Stanciu
Intocmit Elaborated	Proiectant Designer	Olar Mihai Adrian
Reabilitarea liniei de cale ferata Brasov - Simeria, parte componenta a coridorului IV Pan European, pentru circulatia trenurilor cu viteza maxima de 160 km/h, Tronsoanel: Brasov - Sighisoara		Project/Project 2004/RO/16/P/PA/003
Rehabilitation of the railway line Brasov - Simeria, component Part of the IV Pan-European Corridor, for the trains circulation with maximum speed of 160 km/h, Section : Brasov - Sighisoara		Faza / Phase: P.Th. / T.D.

Denumire desen / Drawing Title : INTERVAL / SECTION ACATA - VANATORI
POD / BRIDGE Km 265+233.972 - D=35.00m
PLAN COFRAJ CULEE BRASOV / BRASOV ABUTMENT FORMWORK PLAN

Codificare / Codification System	Scara / Scale 1:100 1:20	LOT / LOT	Nr. / No 01 / 01
----------------------------------	--------------------------	-----------	------------------

E	A	5	1	0	1	E	1	6	B	B	P	V	0	3	8	2	0	0	3	1
---	---	---	---	---	---	---	---	---	---	---	---	---	---	---	---	---	---	---	---	---

NOTA

- Prezentul plan s-a intocmit in conformitate cu dispozitia generala
- Executia partilor superioare ale cuzinetilor, amplasate deasupra banchetelor cuzinetilor, se va face numai dupa procurarea aparatelor de reazem.
- Nivelele superioare ale cuzinetilor se vor stabili dupa procurarea aparatelor de reazem, in functie de inaltimele fiecarui tip de aparat.
- Executia zidurilor intorse si a zidului de garda se va face dupa asezarea tablurilor pe reazeme.
- La executie se vor respecta cu strictitate prevederile din "Normativ pentru producerea betonului si executarea lucrarilor din beton, beton armat si beton precomprimat. Partea 1: Producerea betonului", indicativ NE 012/1-2007 si "Normativ pentru producerea betonului si executarea lucrarilor din beton, beton armat si beton precomprimat. Partea 2: Executarea lucrarilor din beton", indicativ NE 012/2-2010, iar verificarea calitatii lucrarilor si receptiunea lor se va face conform normativului C56-1985.
- Construcția se încadrează în categoria B de importanță. Construcții de importanță deosebită, modelul 1 de asigurare a calitatii conform HG 766/97.
- Podul corespunde la convosiile de calcul UIC (LM71 si SW/2).

NOTE:

- This plan has been drawn up according to the general disposition
- The upper parts of the bearing placed over the bearing seat shall be built only after the procurement of the bearing blocks. The upper level of the bearings shall be established after the procurement of the bearing blocks depending on the height of the each bearing block type. The reverted walls and the guard wall shall be carried out after putting the desk on the supports.
- The execution will strictly comply with the provisions of "Practice code for the concrete production and works execution, reinforced and pre-stressed concrete - Part 1: Practice code for concrete production" NE 012/1-2007 and "Practice code for the concrete production and works execution, reinforced and pre-stressed concrete - Part 2: The execution of concrete works." NE 012/2-2010, and the quality and the reception of the works shall be made according to Norm C 56-1985.
- The construction is classified in the B category of importance. Special importance constructions, model 1 for quality ensuring according to HG 766/97.
- Bridge conveys calculation corresponds to UIC (LM71 and SW/2).

ATENTIE/ATENTION
Aprovisionarea aparatelor de reazem se va face inaintea executarii cuzinetilor si a banchetelor acestora. In cazul in care inaltimea aparatelor de reazem aprovisionate difera fata de cea considerata in proiect se vor modifica inaltimele pe reazem corespunzator cu noile aparate.
The bearing blocks shall be supplied before building the bearings and their seats. In case the height of the supplied bearing blocks differs from that given in the project, the heights on the seats shall be adjusted so as to comply with the new devices.