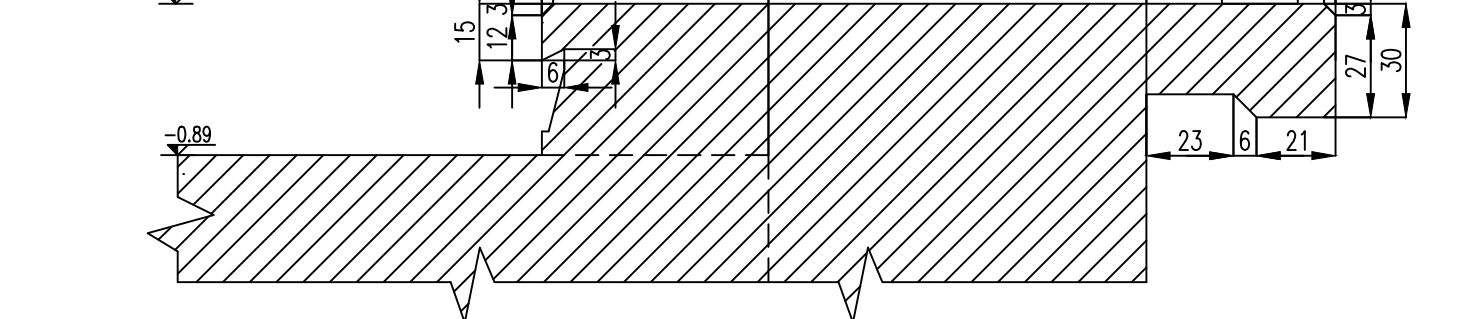
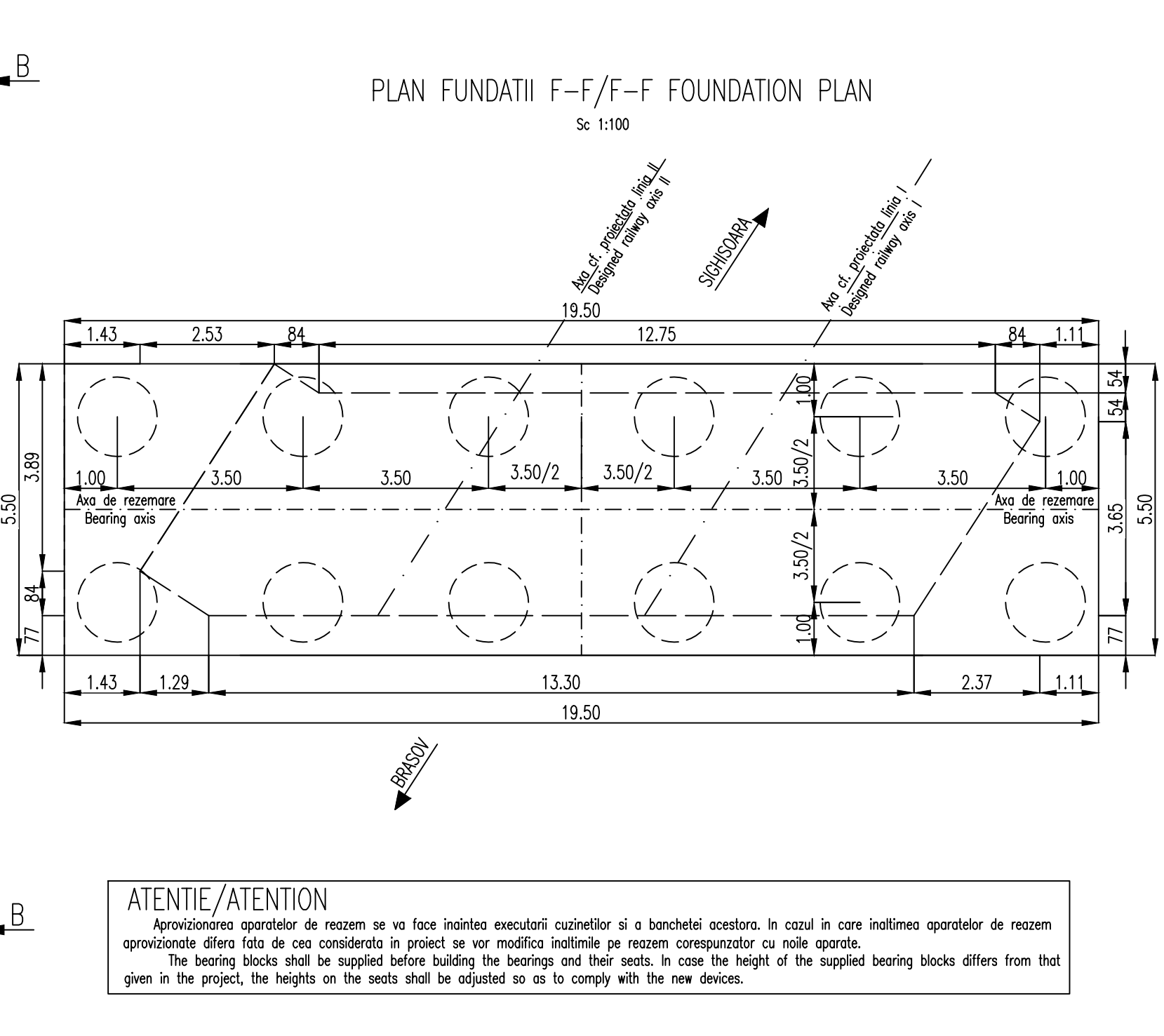
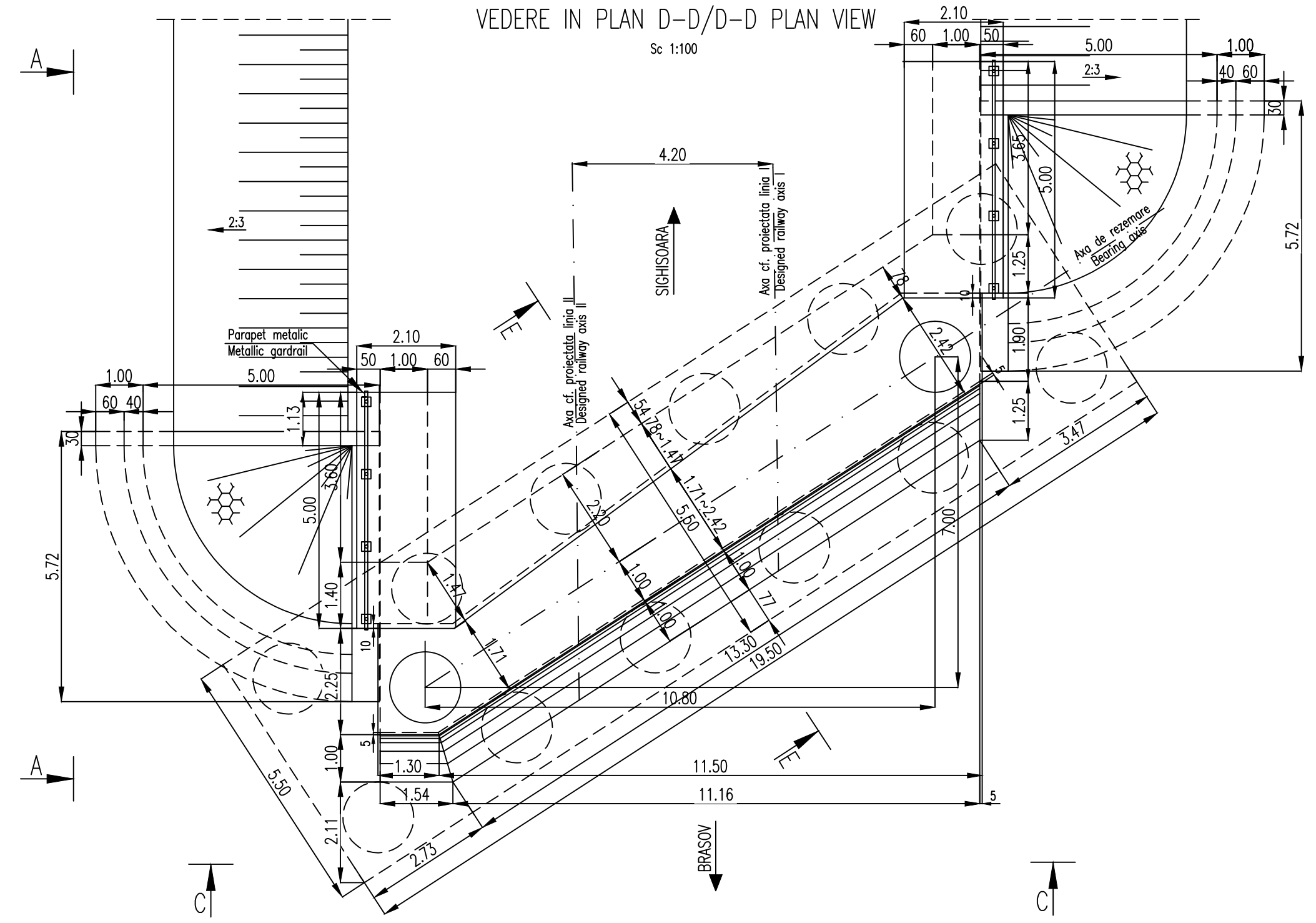
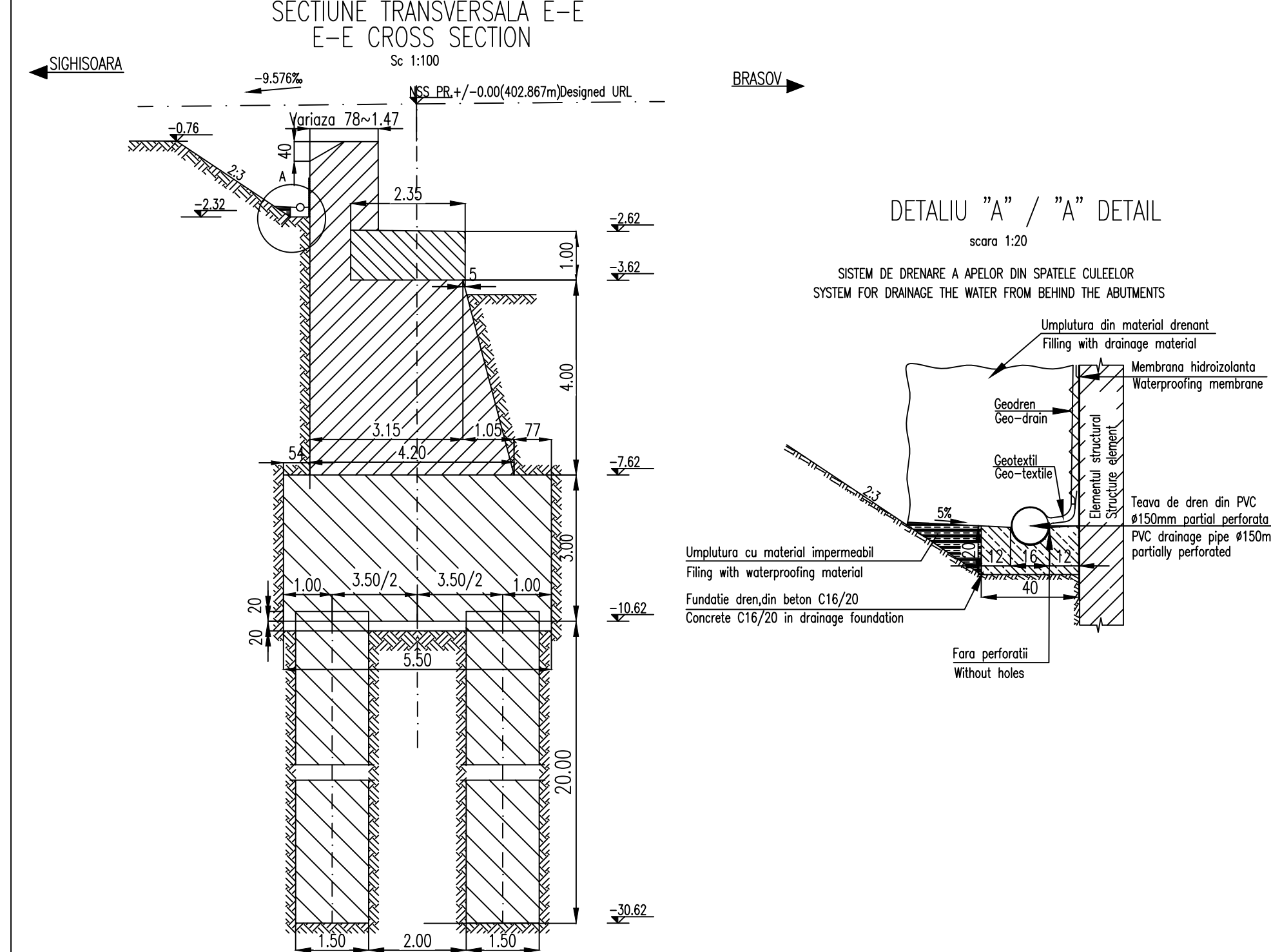


LEGENDA BETOANELOR/CONCRETE LIST

- Beton armat in bancheta cuzinetelor
Reinforced concrete in the cushions and cushions bench
C 35/45-CEM I/A-S 52,5-(XC4+XF3+XA2)-A/C=0,50-0,16-CI 0,20
- Beton armat in elevatie si in zidurile intorse
Reinforced concrete in the elevation infrastructure and reverted walls
C 25/30-Ciment H I/A-S 42,5-(XC4+XF3)-A/C=0,50-0,12-CI 0,20
- Beton simplu in fundatii
Plain concrete in abutments foundations:
C 25/30-Ciment H I/A-S 42,5-(XF3)-A/C=0,50-0,12-CI 0,20
- Beton in stratul de protectie al hidroizolatiei
Concrete in the protection layer of the waterproofing
C 25/30-Ciment II/A-S 32,5-(XC4+XF3)-A/C=0,50-0,16-CI 0,20

In cazul in care temperatura in timpul turnarii este scaduta, se vor folosi cimenturile cu rezistenta initiala mare, R si aditivi acceleratori, iar in cazul luminii pe timp cald, cimenturile cu rezistenta initiala uzuala, N si aditivi intarziatori (conf. NE 012/2-2010 si tabelulu 2 din SR EN 197-1:2002).
When the temperature during the casting is low, cements with high initial resistance, R and accelerating additives shall be used and when it is cast during warm weather, cements with common initial resistance, N and delaying additives shall be used (according the norm NE 012/2-2010 and table 2 for the SR EN197-1:2002).



NOTA

- Prezentul plan s-a intocmit in conformitate cu dispozitia generala
- Executia partilor superioare ale cuzinetelor, amplasate deasupra banchetelor cuzinetelor, se va face numai dupa procurarea aparatorilor de reazem.
- Nivelele superioare ale cuzinetelor se vor stabili dupa procurarea aparatorilor de reazem, in functie de inaltimea fiecarei tip de aparat.
- Executia zidurilor intorse si a zidului de garda se va face dupa asezarea tablourilor pe reazeme.
- La executia se vor respecta cu stricta prevederile din "Normativ pentru producerea betonului si executarea lucrarilor din beton, beton armat si beton precomprimat. Partea 1: Producerea betonului", indicativ NE 012/1-2007 si "Normativ pentru producerea betonului si executarea lucrarilor din beton, beton armat si beton precomprimat. Partea 2: Executarea lucrarilor din beton", indicativ NE 012/2-2010, iar verificarea calitatii lucrarilor si receptiunea lor se va face conform normativului C56-1985.
- Construcția se încadrează în categoria B de importanță. Construcții de importanță deosebită, modelul 1 de asigurare a calitatii conform HG 766/97.
- Podul corespunde la convosiile de calcul UIC (LM71 si SW/2).

NOTE:

- This plan has been drawn up according to the general disposition
- The upper parts of the bearing placed over the bearing seat shall be built only after the procurement of the bearing blocks, the upper level of the bearings shall be established after the procurement of the bearing blocks depending on the height of the each bearing block type. The reverted walls and the guard wall shall be carried out after putting the desk on the supports.
- The execution will strictly comply with the provisions of "Practice code for the concrete production and works execution, reinforced and pre-stressed concrete - Part 1: Practice code for concrete production" NE 012/1-2007 and "Practice code for the concrete production and works execution, reinforced and pre-stressed concrete - Part 2: The execution of concrete works." NE 012/2-2010, and the quality and the reception of the works shall be made according to Norm C 56-1985.
- The construction is classified in the B category of importance. Special importance constructions, model 1 for quality ensuring according to HG 766/97.
- Bridge conveys calculation corresponds to UIC (LM71 and SW/2).

D					
C					
B					
A	12.2011	Revizia 1 1.Revision	Olar Mihai Adrian	Aprobat Consultant	Aprobat CFR
Index	Date	Modificare Modification/Revision	Proiectant Designer	Aprobat Consultant Approved Consultant	Aprobat CFR Approved CFR

GUVERNUL ROMANIEI
ROMANIAN GOVERNMENT

PROIECT FINANȚAT DE UNIUNEA EUROPEANĂ
EUROPEAN UNION FINANCED PROJECT

CFR
C.N.C.F. "C.F.R." - S.A.

CLIENT / CLIENT

ITALFERR
GRUPPO FERROVIE DELLO STATO
Joint Venture leader

Scott Wilson

OBERMEYER
FLANEN + BERATEN GmbH

TECNIC
Consulting Engineers

CONSULTANT / CONSULTANT

Aprobat Approved	Sef proiect Project manager	R. Liuzza	Data Date	Semnatura Signature
Aprobat Approved	Coordonator Sectiune 1 Section 1 Coordinator	C. Gambelli		
Verificat Checked	Expert Cheie Key Expert	V.Kallidromitis		

SUBCONTRACTANT / SUBCONTRACTOR

Aprobat Approved	Responsabil Subcontractant Subcontractant Responsible	A. Dinulescu Stanciu	11.2011	
Intocmit Elaborated	Proiectant Designer	Olar Mihai Adrian	11.2011	

Reabilitarea liniei de cale ferata Brasov - Simeria, parte componenta a coridorului IV Pan European, pentru circulatia trenurilor cu viteza maxima de 160 km/h,
Tronsoanel: Brasov - Sighisoara
Rehabilitation of the railway line Brasov - Simeria, component Part of the IV Pan-European Corridor, for the trains circulation with maximum speed of 160 km/h,
Section : Brasov - Sighisoara

Project/Project
2004/RO/16/P/PA/003
Faza / Phase:
P.Th. / T.D.

Denumire desen / Drawing Title :

INTERVAL / SECTION ACATA - VANATORI
POD / BRIDGE Km 265+233.972 - D=35.00m
PLAN COFRAJ CULEE / ABUTMENT FORMWORK PLAN SIGHISOARA

Codificare / Codification System

Scara / Scale 1:100 1:20	LOT / LOT	Nr. / No 01 / 01
-----------------------------	-----------	---------------------

E A 5 1 0 1 E 1 6 B B P V 0 3 8 2 0 0 4 1

ATENTIE / ATTENTION

Aproziionarea aparatorilor de reazem se va face inaintea executiei cuzinetelor si a banchetelor acestora. In cazul in care inaltimea aparatorilor de reazem aproziionate difera fata de cea considerata in proiect se vor modifica inaltimele pe reazem corespunzator cu noile aparate.
The bearing blocks shall be supplied before building the bearings and their seats. In case the height of the supplied bearing blocks differs from that given in the project, the heights on the seats shall be adjusted so as to comply with the new devices.