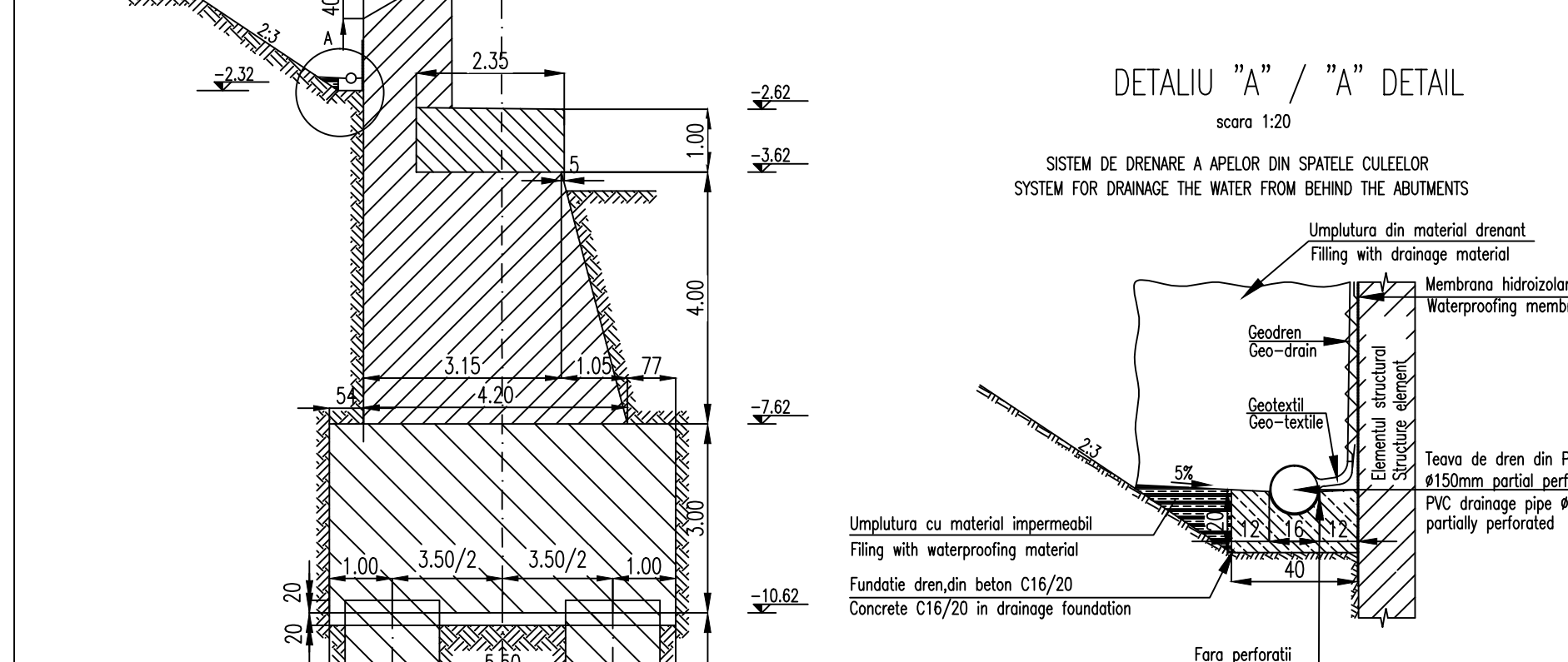
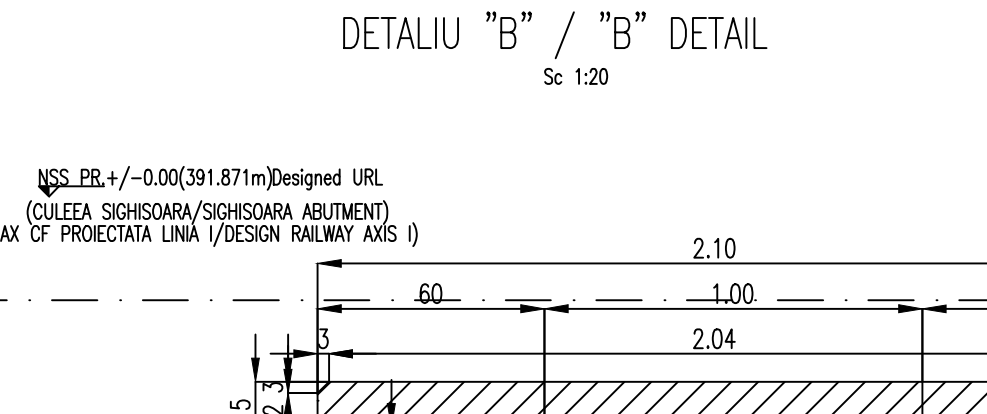
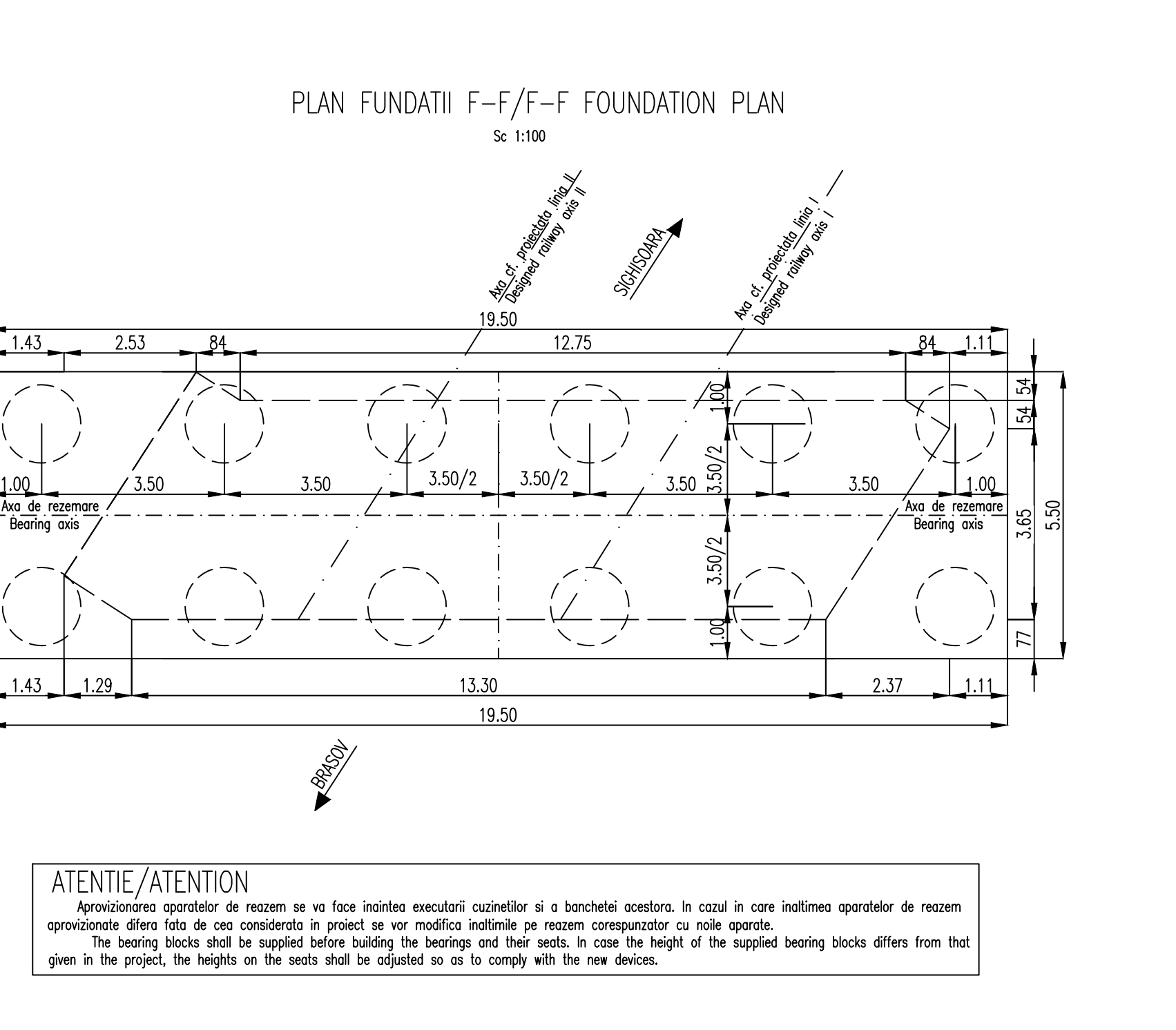
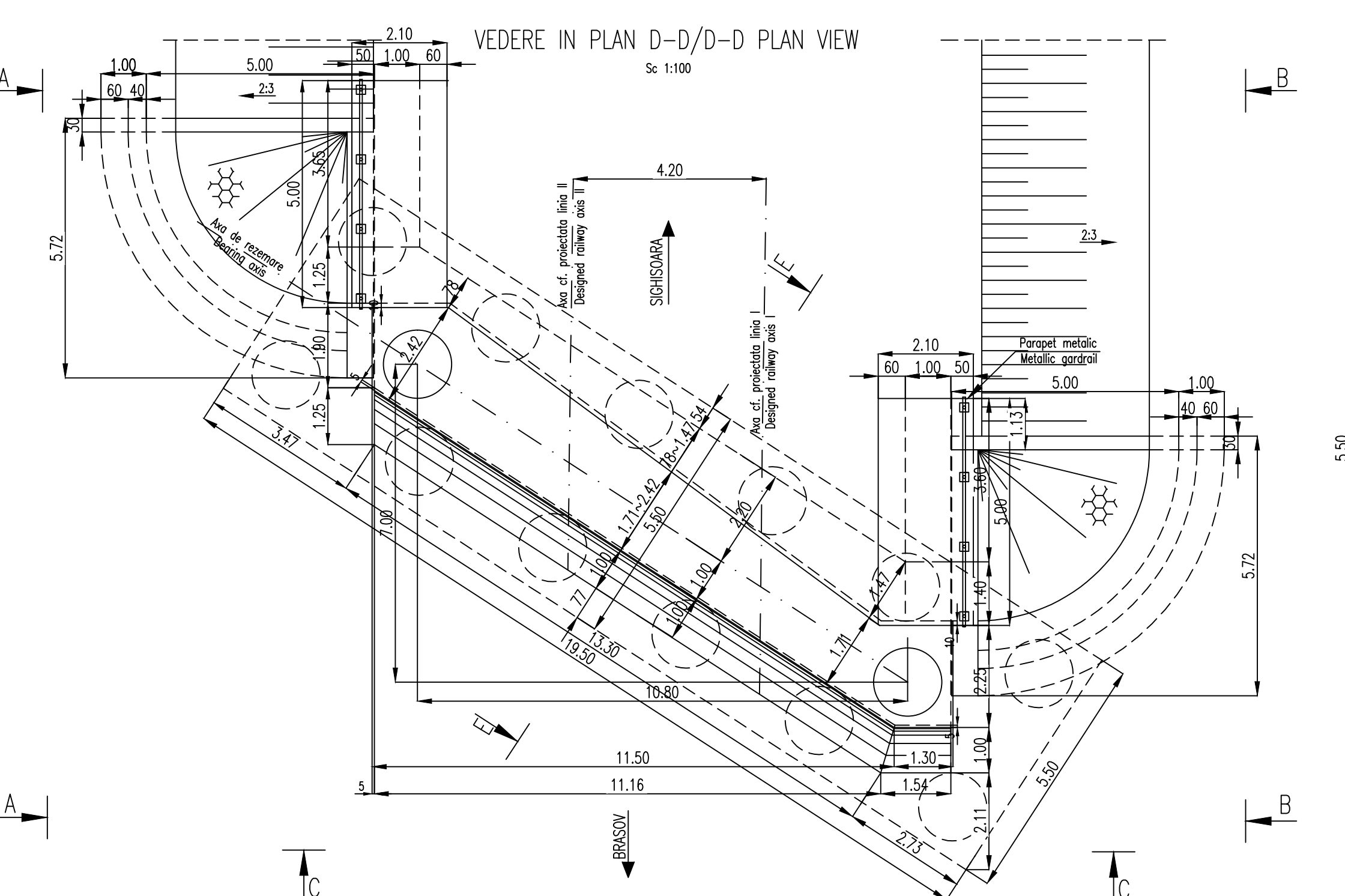
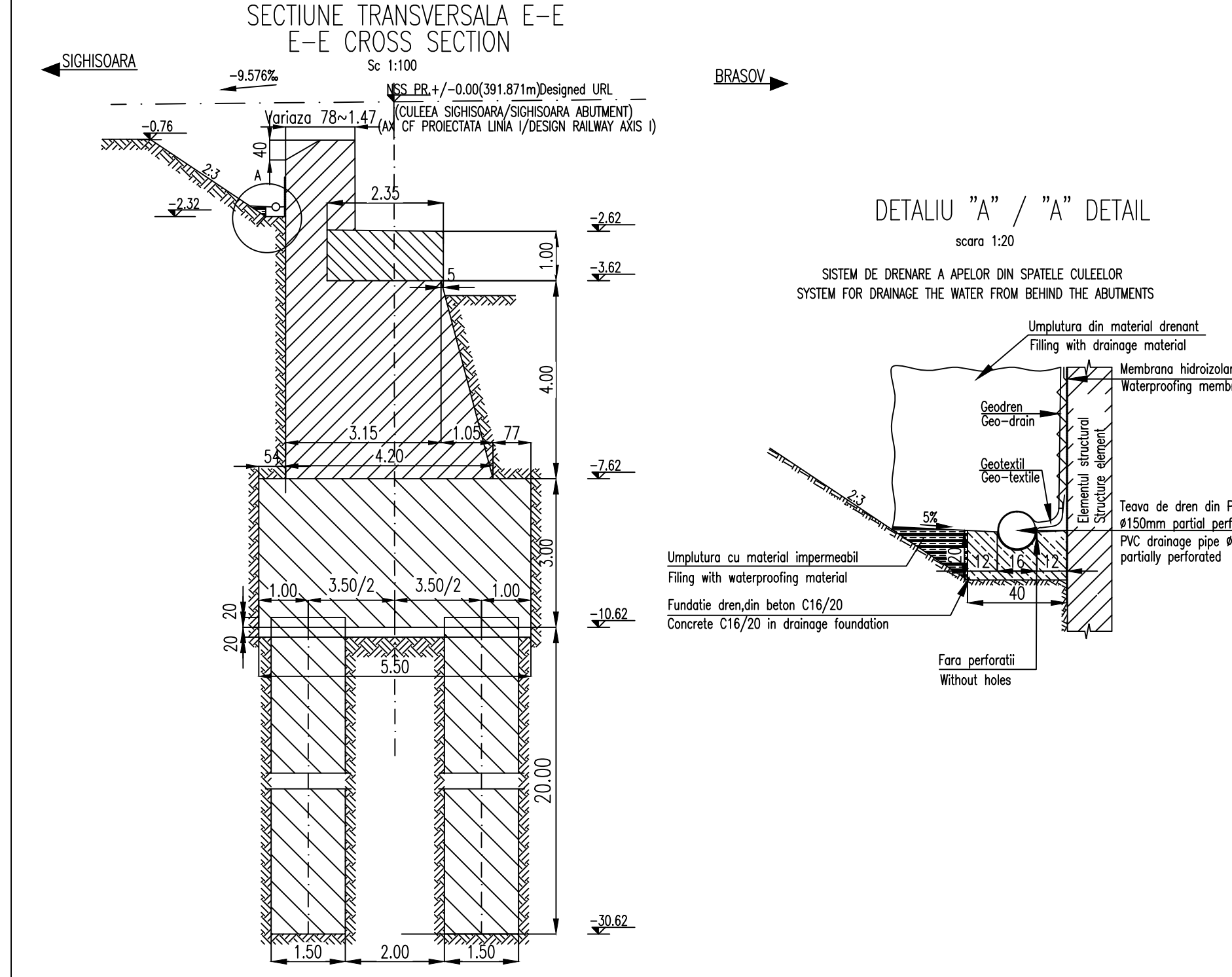


**LEGENDA BETOANELOR/CONCRETE LIST**

	Beton armat in bancheta cuzinetilor Reinforced concrete in the cushions and cushions bench C 35/45-CEM I/A-S 52,5-(XC4+XF3+XK2)-A/C=0,50-0,16-CI 0,20
	Beton armat in elevatie si in zidurile intorse Reinforced concrete in the elevation infrastructure and reverted walls C 25/30-Ciment H I/A-S 42,5-(XC4+XF3)-A/C=0,50-0,32-CI 0,20
	Beton simplu in fundatii Plain concrete in abutments foundations: C 25/30-Ciment H I/A-S 42,5-(XF3)-A/C=0,50-0,32-CI 0,20
	Beton in stratul de protectie al hidroizolatiei Concrete in the protection layer of the waterproofing C 25/30-Ciment I/A-S 32,5-(XC4+XF3)-A/C=0,50-0,16-CI 0,20

Se interzice copierea, difuzarea, imprumutarea sau utilizarea in alte scopuri, fara permisiunea ARES LIDER COMPANY ca proprietar al desenului.  
This drawing is forbidden to be copied, lent or used in other purposes than those previously approved by ARES LIDER COMPANY as its owner.

In cazul in care temperatura in timpul turnarii este scazuta, se vor folosi cimenturile cu rezistenta initiala mare, R si aditivi acceleratori, iar in cazul turnarii pe timp cald, se vor folosi cimenturile cu rezistenta initiala uzuala, N si aditivi intarziatori (conforme 012/2-2010 si tabelul 2 din SR EN 197-1:2002).  
When the temperature during the casting is low, cements with high initial resistance, R and accelerating additives shall be used and when it is cast during warm weather, cements with common initial resistance, N and delaying additives shall be used (according to the norm NE 012/2-2010 and table 2 for the SR EN 197-1: 2002).



**NOTA**

- Prezentul plan s-a intocmit in conformitate cu dispozitiile generale.
- Podul corespunde la convoltele de calcul UC(QM 71 si SW/2).
- La executie se vor respecta cu strictete prevederile din "Normativ pentru producerea betonului si executarea lucrarilor din beton, beton armat si beton precomprimat. Partea 1: Producerea betonului", indicativ NE 012/1-2007 si "Normativ pentru producerea betonului si executarea lucrarilor din beton, beton armat si beton precomprimat. Partea 2: Executarea lucrarilor din beton", indicativ NE 012/2-2010, iar verificarea calitatii lucrarilor si receptiunea lor se va face conform normativului CS6-1985.
- Construcția se încadrează în categoria de importanță B (construcții de importanță deosebită), modelul 1- de asigurare a calitatii și clasei de importanță B, conform HG 766/1997.
- Proiectul va fi verificat la cerințele A4.2; B2.2; D2.2.

**NOTE:**

- This plan has been drawn up according to the general disposition.
- The bridge corresponds to the UC determination convolts (LM71 and SW/2).
- The execution will strictly comply with the provisions of "Practice code for the concrete production and works execution, reinforced and pre-stressed concrete - Part 1: Practice code for concrete production" NE 012/1-2007 and "Practice code for the concrete production and works execution, reinforced and pre-stressed concrete - Part 2: The execution of concrete works" NE 012/2-2010, and the quality and the reception of the works shall be made accordingly to Norm C.56-1985.
- The construction has been classified in B category of importance (high important constructions), model 1-ensuring the quality and class of importance B according to G.O. 766/97.
- The project will be checked in order to comply with the A4.2; B2.2; D2.2 requirements.

**ATENȚIE/ATTENTION**  
Aprovizionarea aparatelor de reazem se va face inaintea executiei cuzinetilor si a banchetelor acestora. In cazul in care inaltimea aparatelor de reazem aprovizionate difera fata de cea considerata in proiect se vor modifica inaltimile pe reazem corespunzator cu noile aparate.  
The bearing blocks shall be supplied before building the bearings and their seats: in case the height of the supplied bearing blocks differs from that given in the project, the heights on the seats shall be adjusted so as to comply with the new devices.

D					
C					
B					
A	12.2011	Revizia 1 1 Revision	Olar Mihai Adrian	Aprobat Consultant	Aprobat CFR
Index	Date	Modificare Modification/Revision	Proiectant Designer	Aprobat Consultant Approved Consultant	Aprobat CFR Approved CFR



**CLIENT / CLIENT**  
GUVERNUL ROMANIEI / ROMANIAN GOVERNMENT  
PROIECT FINANȚAT DE UNIUNEA EUROPEANĂ / EUROPEAN UNION FINANCED PROJECT  
C.N.C.F. "C.F.R." - S.A.

<b>CONSULTANT / CONSULTANT</b>		Data Date	Semnătura / Signature
Aprobat / Approved	Sef proiect / Project manager		R. Liuzza
Aprobat / Approved	Coordonator Sectiune 1 / Section 1 Coordinator		C. Gambelli
Verificat / Checked	Expert Cheie / Key Expert		V.Kalidromitis

<b>SUBCONTRACTANT / SUBCONTRACTOR</b>			
Aprobat / Approved	Responsabil Subcontractant / Subcontractant Responsible	A. Dinulescu Stanciu	11.2011
Intocmit / Elaborated	Proiectant / Designer	Olar Mihai Adrian	11.2011

Reabilitarea liniei de cale ferata Braşov - Simeria, parte componentă a coridorului IV Pan European, pentru circulația trenurilor cu viteză maximă de 160 km/h,  
Tronsoanel: Braşov - Sighişoara  
Rehabilitation of the railway line Braşov - Simeria, component Part of the IV Pan-European Corridor, for the trains circulation with maximum speed of 160 km/h,  
Section : Braşov - Sighişoara

Faza / Phase: P.Th. / T.D.

Denumire desen / Drawing Title :  
INTERVAL/SECTION ARCHITA-VANATORI  
POD Km.Pr 266+382.312 L=35.00m / PLAN COFRAJ CULEE SIGHISOARA  
BRIDGE Design Km.266+382.312 L=35.00m / SIGHISOARA ABUTMENT FORMWORK PLAN

Codificare / Codification System	Scara / Scale 1:100 1:20	LOT / LOT	Nr. / No 01 / 01
----------------------------------	-----------------------------	-----------	---------------------

E A 5 1 0 1 E 1 6 B B P V 0 3 9 2 0 0 4 1