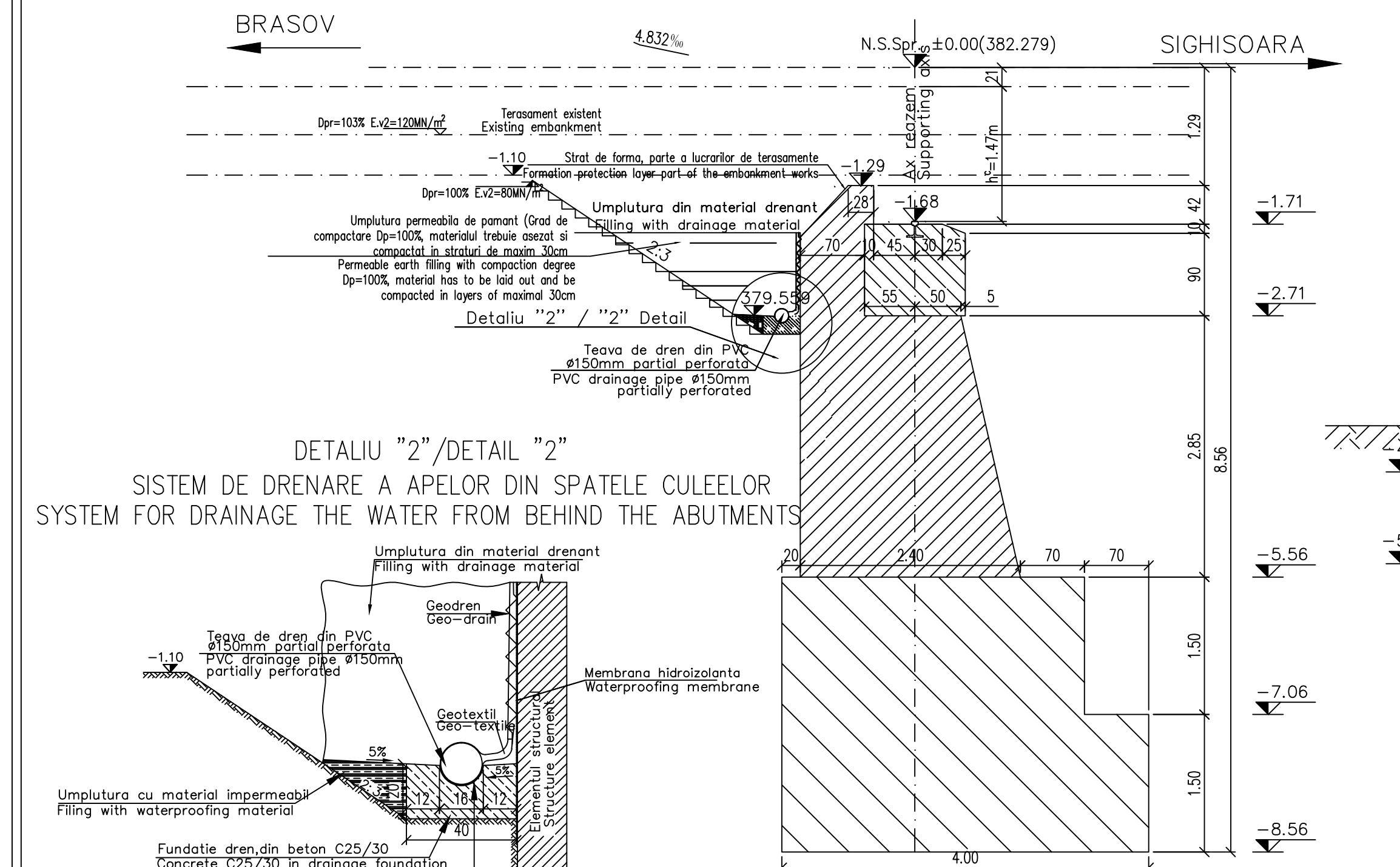
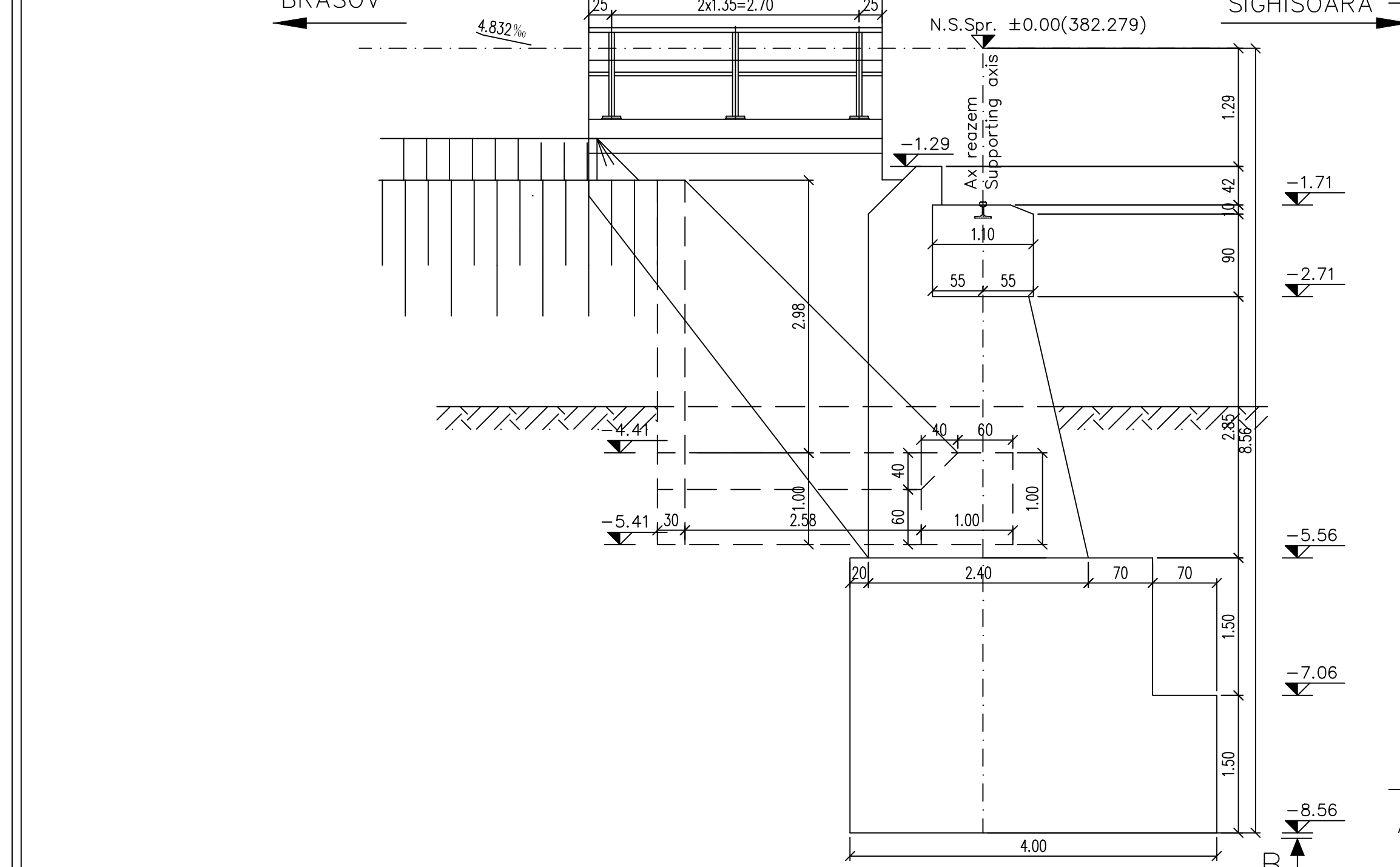


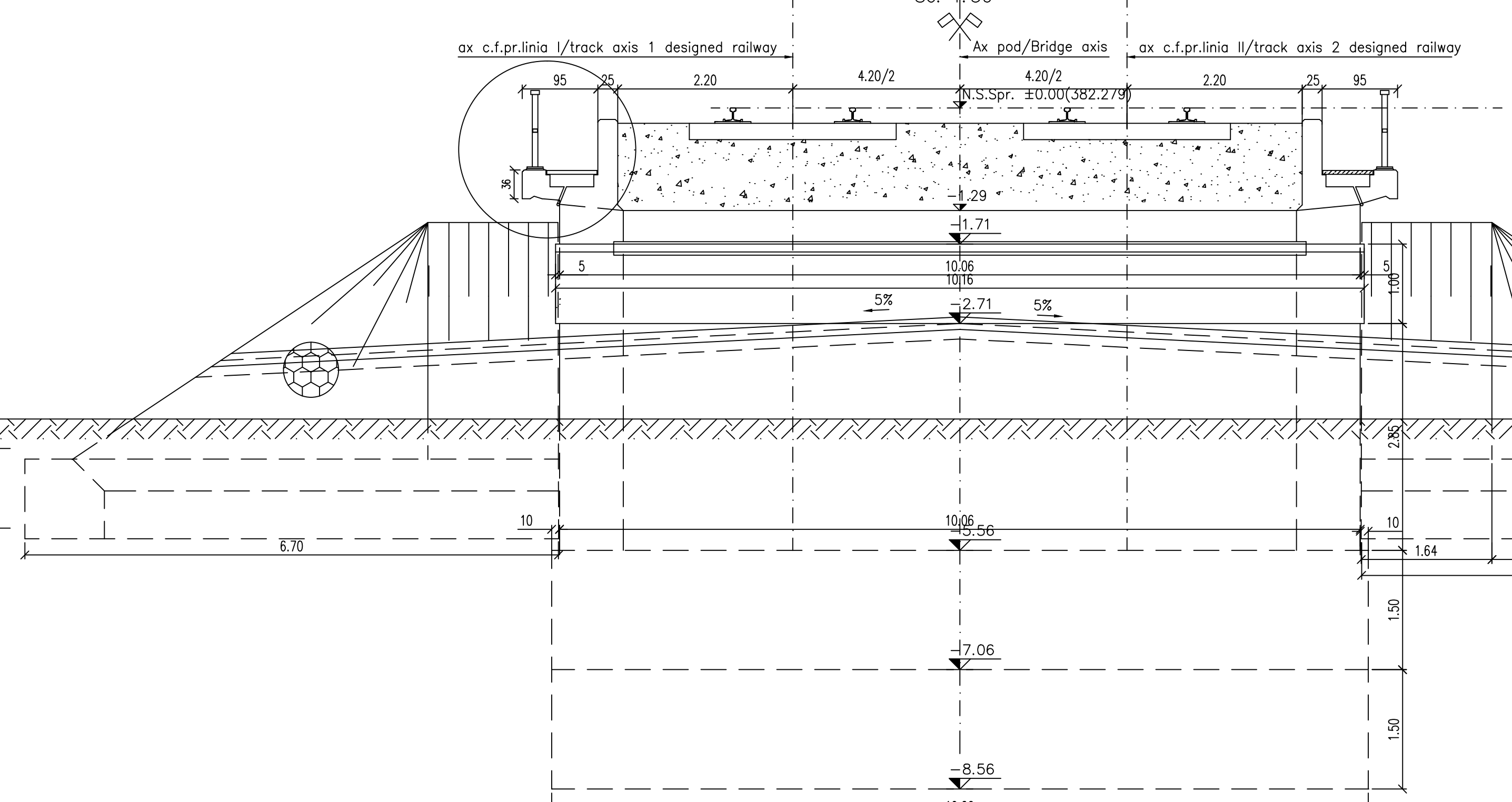
SECTIUNE TRANSVERSALA C-C/C-C CROSS SECTION  
Sc. 1:50



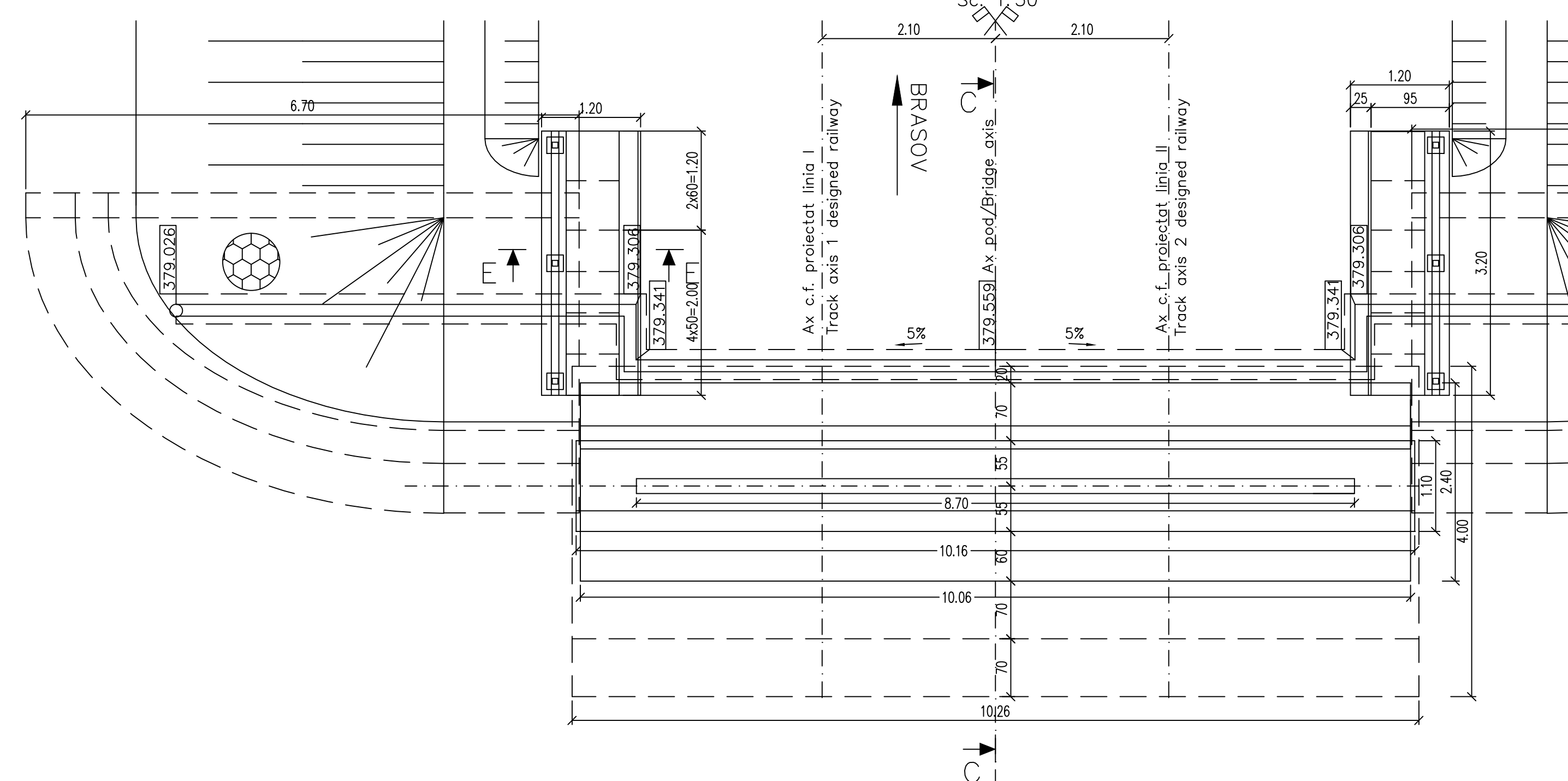
DETALIU "2"/DETAIL "2"  
SISTEM DE DRENARE A APELOR DIN SPATELE CULEELOR  
SYSTEM FOR DRAINAGE THE WATER FROM BEHIND THE ABUTMENTS



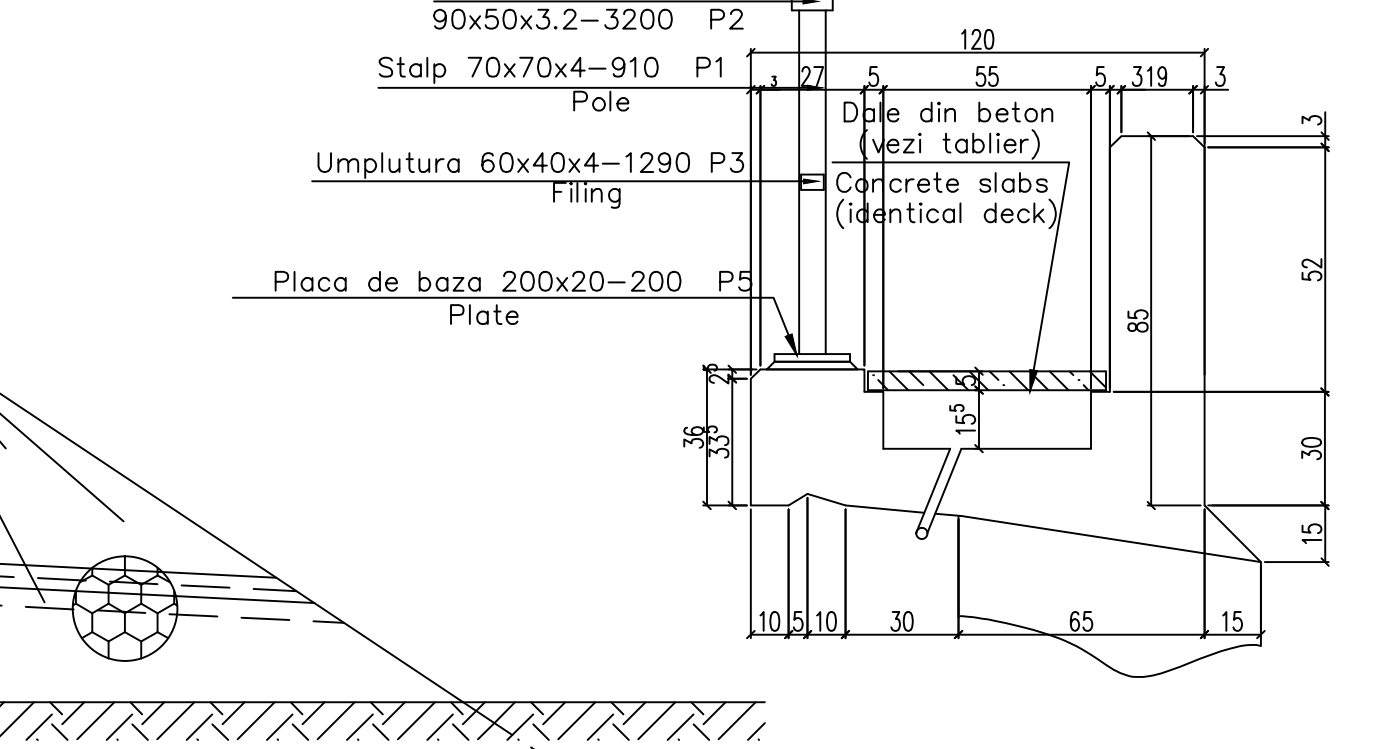
SECTIUNE TRANSVERSALA B-B / B-B CROSS SECTION  
Sc. 1:50



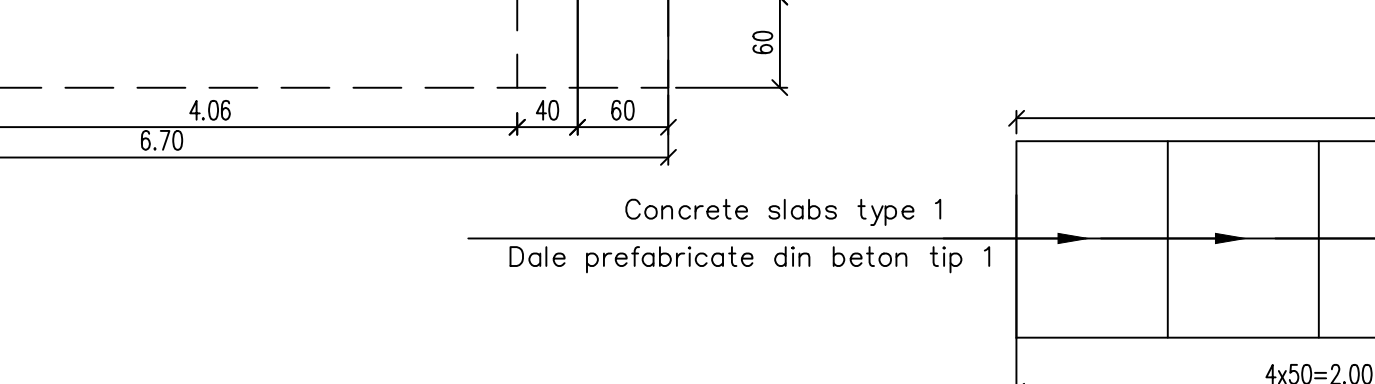
VEDERE IN PLAN / PLAN VIEW  
Sc. 1:50



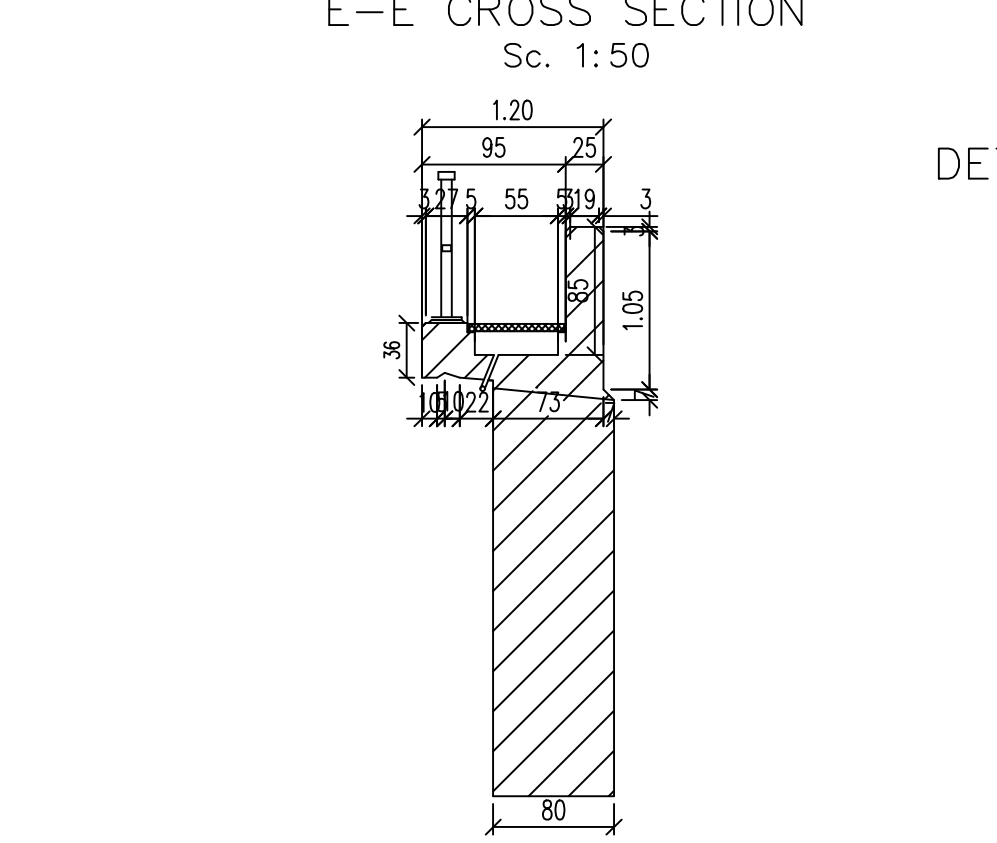
DETALIU TROTUAR/SIDEWALK  
Sc. 1:20



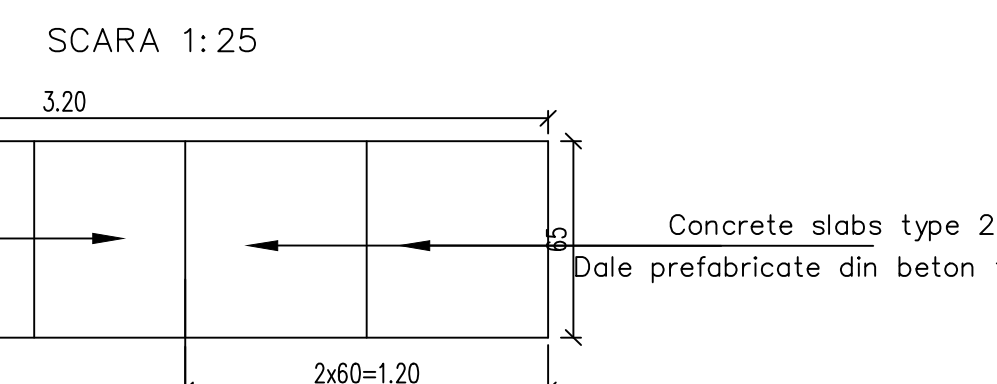
SCHEMA DALE PREFABRICATE TROTUAR  
SCARA 1:25



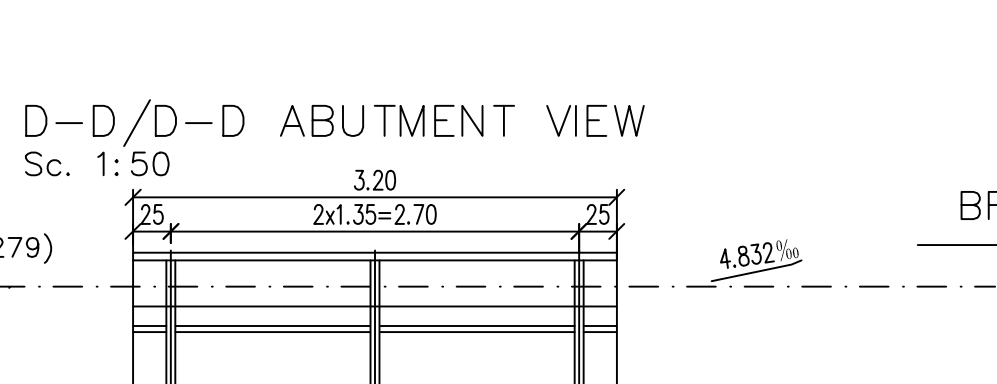
SECTIUNE TRANSVERSALA E-E  
E-E CROSS SECTION  
Sc. 1:50



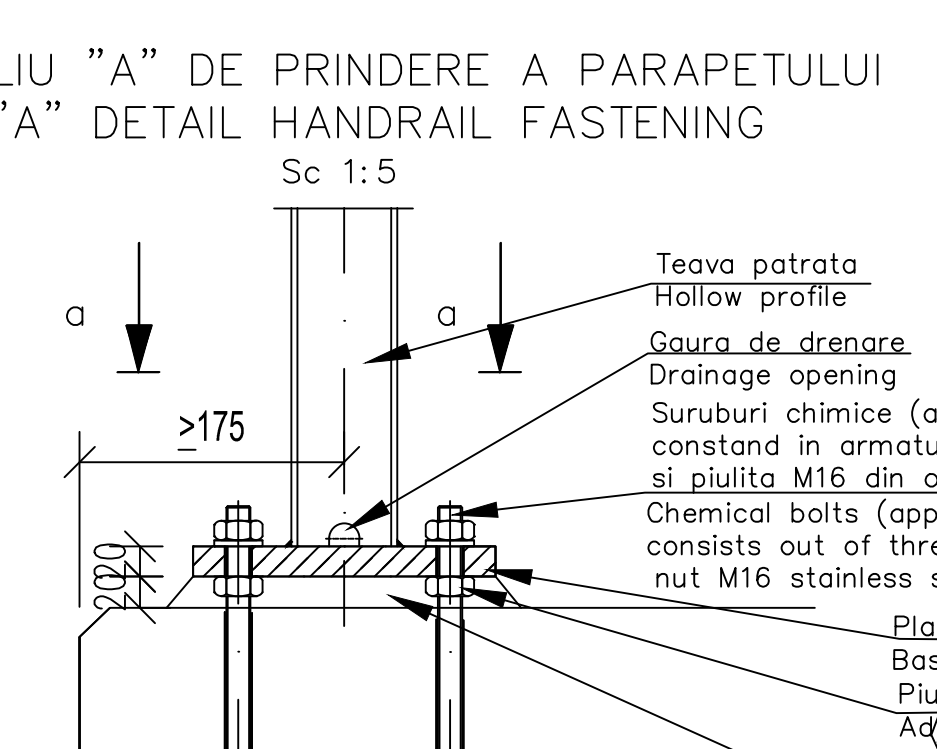
SECTIUNE a-a/a-a SECTION  
Sc. 1:5



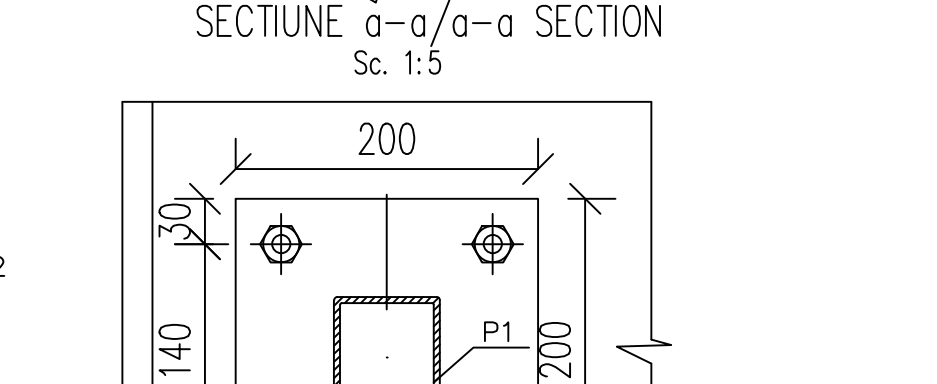
SECTIUNE b-b/b-b SECTION  
Sc. 1:5



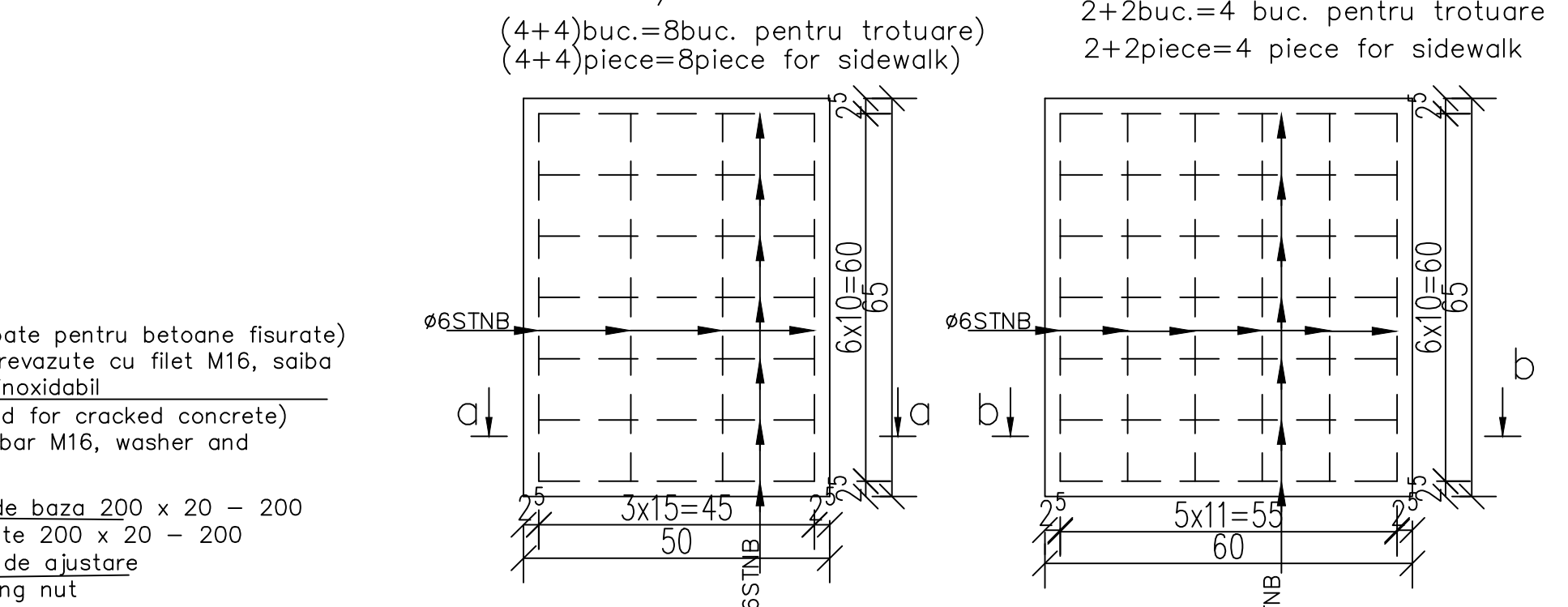
DETALIU "A" DE PRINDERE A PARAPETULUI  
"A" DETAIL HANDRAIL FASTENING  
Sc. 1:5



SECTIUNE a-a/a-a SECTION  
Sc. 1:5



DALE PREFABRICATE DIN BETON/ CONCRETE PREFAB SLABS  
TIP 1/TYPE 1 Sc. 1:10  
TIP 2/TYPE 2 Sc. 1:10



EXTRAS DE ARMATURA STNB PENTRU CULEE  
TABLE FOR REINFORCEMENTS STNB FOR ABUTMENT

TIP/TYPE	TIP ARMATURA TYPE REINFORCEMENT	Nr. BUC. No. PEECE	kg/m	m/buc. m/piece	kg
TIP 1 TYPE 1	STNB 6 G.Q.283	8	0.222	5.55	10.00
TIP 2 TYPE 2	STNB 6 G.Q.283	4	0.222	7.45	7.00
TOTAL					17,00kg

MASURATOAREA MATERIALULUI METALIC NECESAR PENTRU PARAPETUL LA CULEEA BRASOV  
MEASUREMENT FOR THE METALLIC MATERIAL REQUIRED FOR THE FOOT PATH FOR BRASOV ABUTMENT

Poz.	Denumire	Dimensiuni	Nr. buc. asemenea	Greutate S235		
				kg/m	kg/buc.	Total(kg)
0	1	2	3	4	5	6
P1	Teava patrata Hollow profile	70x70x4-910	6	8.29	7.54	45.26
P2	Teava dreptunghiulara Hollow profile	90x50x3.2-3200	2	6.71	21.50	43.00
P3	Teava dreptunghiulara Hollow profile	60x40x4-1290	4	5.78	7.50	30.00
P4	Teava dreptunghiulara Hollow profile	60x40x4-220	4	5.78	1.30	5.20
P5	Placa de baza Plate	200x20-200	6	31.40	6.28	37.68
	Suruburi M16 Bolts M16	ø16-130	24	-	0.231	5.55
	Piulițe M16 Nuts M16	-	48	-	0.031	1.50
	Soabe Washers	-	24	-	0.011	0.30
Total partial						168.50
Spor 3% pt. sudura						5.50
TOTAL (kg)						174.00

NOTA  
1. Prezenta plan s-a intocmit in conformitate cu dispozitia generala EA5101C16PAPV0400020-2011.  
2. Executie partilor superioare ale culezilor, amplasate deasupra banchetelor culezilor, se va face numai dupa procurarea aparatelor de reazem.  
3. Nivelul superior al culezilor se vor stabili dupa procurarea aparatelor de reazem, in functie de inaltimea fiecarui tip de aparat.  
4. Executie zidurilor intorse si a zidului de garda se va face dupa asezarea tablierului pe reazeme.  
5. La executie se vor respecta cu strictete prevederile din "Cod de practica pentru producerea betonului", indicativ NE 012/1-2007 si "Normativ pentru producerea betonului si executarea lucrarilor din beton, beton armat si beton precomprimat. Partea 2: Executarea lucrarilor din beton", indicativ NE 012/2-2010, iar verificarea calitatii lucrarilor si receptiunea lor se va face conform normativului C56-1985.  
6. Constructia se incadreaza in categoria B de importanta. Constructii de importanta deosebita, modelul 1 de asigurare a calitatii conform HG 766/97.  
7. Podul corespunde la convolviile de calcul UIC (LM71 si SW/2).  
NOTE:  
1. This plan has been drawn up according to the general disposition EA5101C16PAPV0400020-2011.  
2. The upper parts of the bearing placed over the bearing seat shall be built only after the procurement of the bearing blocks. The upper level of the bearings shall be established after the procurement of the bearing blocks depending on the height of the each bearing block type.  
3. The execution will strictly comply with the provisions of "Practice code for concrete production NE 012/1-2007 and "Practice code for the concrete production and works execution, reinforced and pre-stressed concrete - Part 2: The execution of concrete works." NE 012/2-2010, and the quality and the reception of the works shall be made according to Norm C 56-1985.  
4. The construction is classified in the B category of importance. Special importance constructions, model 1 for quality ensuring according to HG 766/97.  
5. Bridge convolys calculation corresponds to UIC (LM71 and SW/2).

LEGENDA BETOANELOR/CONCRETE LIST

- Beton armat in cuzinetii si in bancheta cuzinetilor  
Reinforced concrete in the cushions and cushions bench  
C 35/50-CEM I/A-S 52,5-(XC4+XF3+XA2)-A/C=0,50-D<sub>max</sub>=32-CI 0,20
- Beton armat in elevatie si in zidurile intoarse  
Reinforced concrete in the elevation infrastructure and reverted walls  
C 25/30-Ciment H II/A-S 42,5-(XC4+XF3)-A/C=0,50-D<sub>max</sub>=32-CI 0,20
- Beton simplu in fundatii  
Plain concrete in the abutments foundations:  
C 25/30-Ciment H II/A-S 42,5-(XF3)-A/C=0,50-D<sub>max</sub>=32-CI 0,20
- Beton in fundatia sferurilor de con  
Concrete in the protection layer of the waterproofing  
C 25/30-Ciment II/A-S 32,5-(Xf1)-A/C=0,50-D<sub>max</sub>=32-CI 0,20
- Beton in stratul de protectie al hidroizolatiei  
Concrete in the protection layer of the waterproofing  
C 25/30-Ciment II/A-S 32,5-(XC4+XF3)-A/C=0,50-D<sub>max</sub>=16-CI 0,20

In cazul in care temperatura in timpul turnarii este scazuta, se vor folosi cimenturile cu rezistenta initiala mare, R si aditivi acceleratori, iar in cazul turnarii pe timp cald, cimenturile cu rezistenta initiala uzada, N si aditivi intarziatori (confin. NE 012/2-2010 si tabelul 2 din SR EN 197-1:2002).  
When the temperature during the casting is low, cements with high initial resistance, R and accelerating additives shall be used and when it is cast during warm weather, cements with common initial resistance, N and delaying additives shall be used (according to the norm NE 012/2-2010 and table 2 for the SR EN 197-1: 2002).

Se interzice copierea, difuzarea, imprumutarea sau utilizarea in alte scopuri, fara permisiunea ARES Lider Company ca proprietar al desenului.  
This drawing is forbidden to be copied, lent or used in other purposes than those previously approved by ARES Lider Company as its owner.

GUVERNUL ROMANIEI  
ROMANIAN GOVERNMENT

PROIECT FINANȚAT DE UNIUNEA EUROPEANĂ  
EUROPEAN UNION FINANCED PROJECT

CFR  
C.N.C.F. "C.F.R." - S.A.

CLIENT / CLIENT

CONSULTANT / CONSULTANT

SUBCONTRACTANT / SUBCONTRACTOR

Reabilitarea liniei de cale ferata Brasov - Simeria, parte componenta a coridorului IV Pan European, pentru circulatia trenurilor cu viteza maxima de 160 km/h, Tronsoanul : Brasov - Sighisoara, componenta Part of the IV Pan-European Corridor, for the trains circulation with maximum speed of 160 km/h, Section : Brasov - Sighisoara

Denumire desen / Drawing Title :  
INTERVAL / SECTION ARCHITA - VANATORI  
POD / BRIDGE Km 267+963.152 D=12.00m+35.00m+12.00m  
PLAN COFRAJ CULEE BRASOV/BRASOV ABUTMENT FORMWORK PLAN

Codificare / Codification System

Scara / Scale  
1:50;1:25;1:20;1:10

LOT / LOT

Nr. / No  
01 / 01

E A S 1 0 1 E 1 6 B B P V 0 4 0 2 0 0 4 1