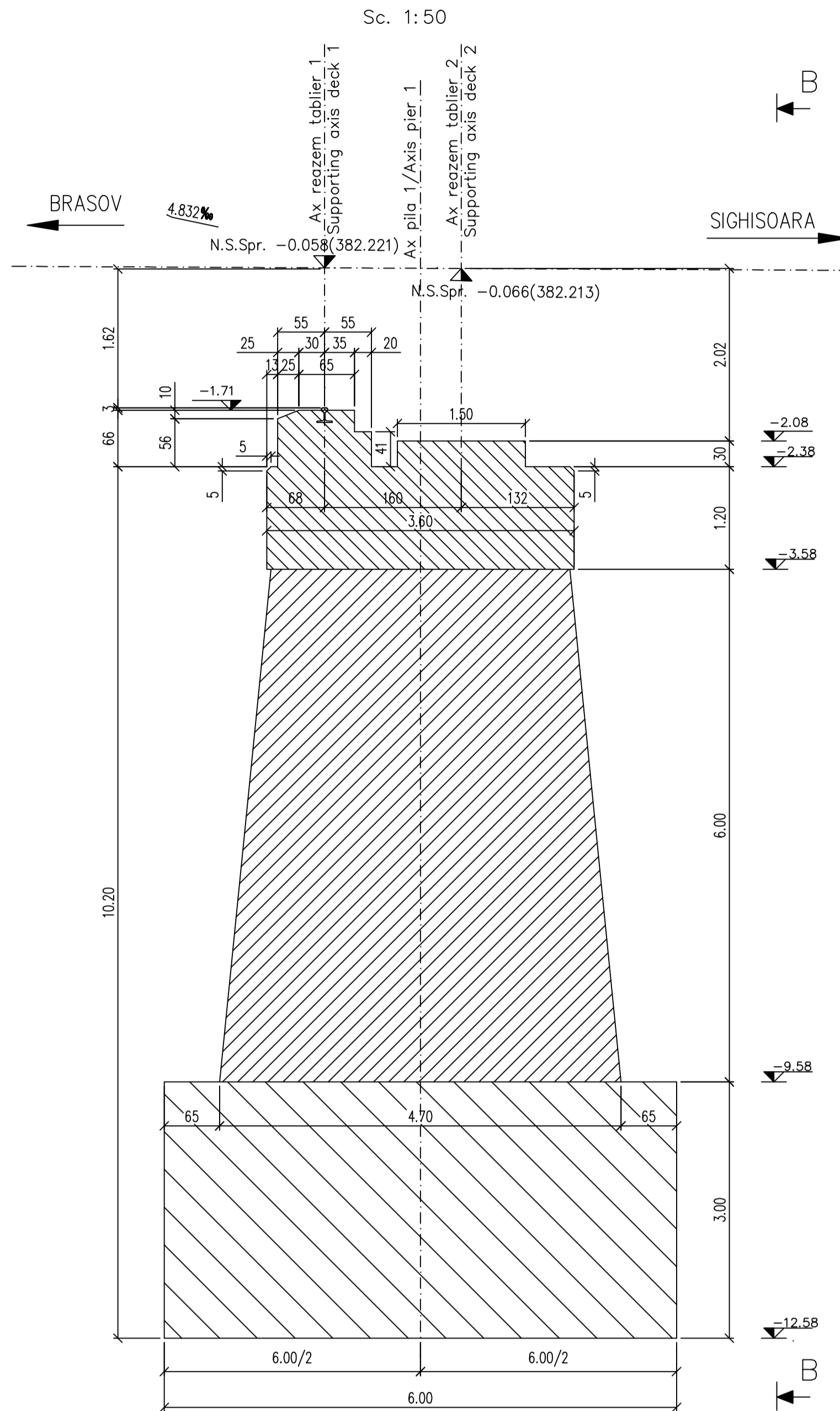
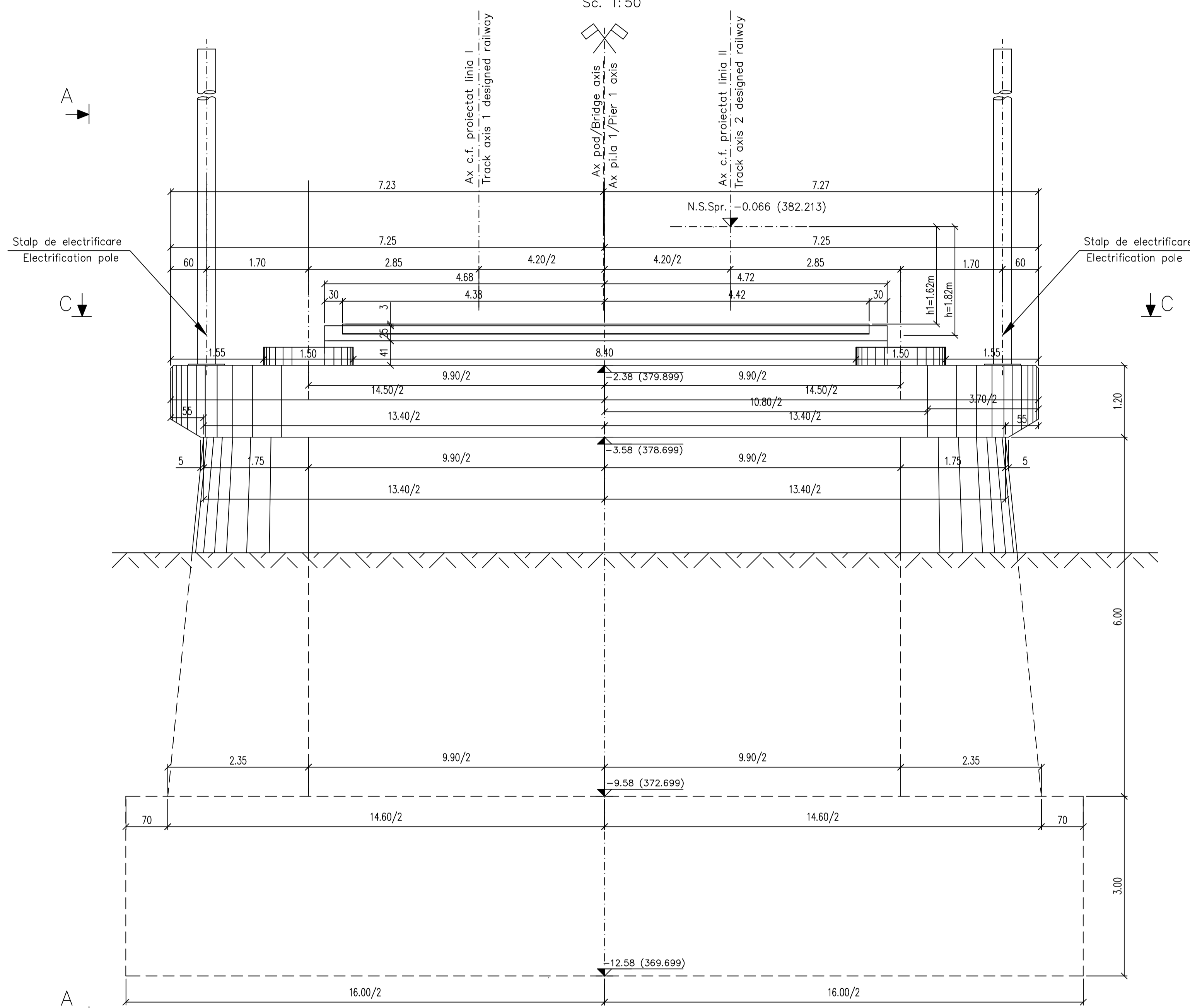


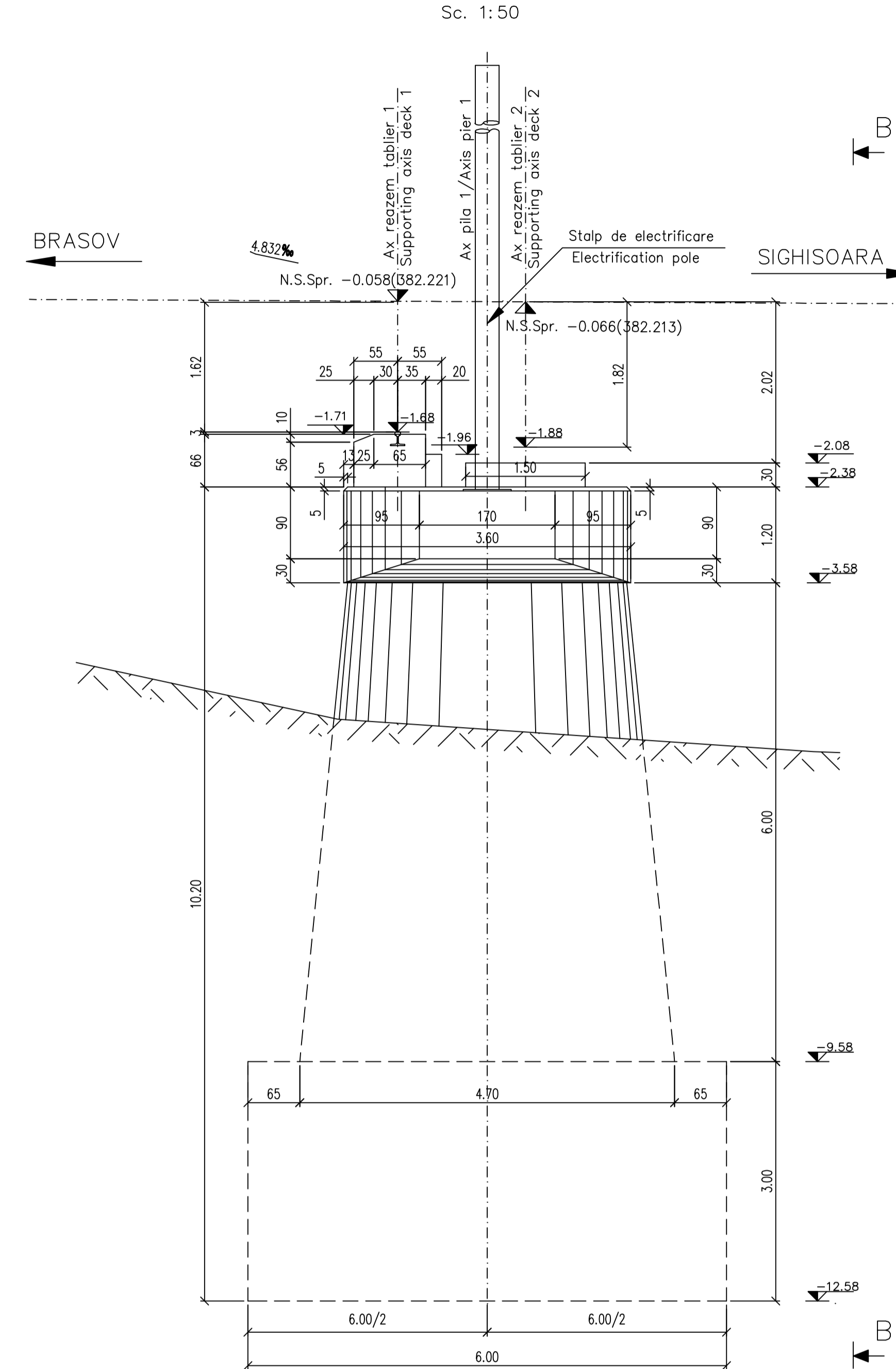
SECTIUNE TRANSVERSALA D-D/D-D CROSS SECTION



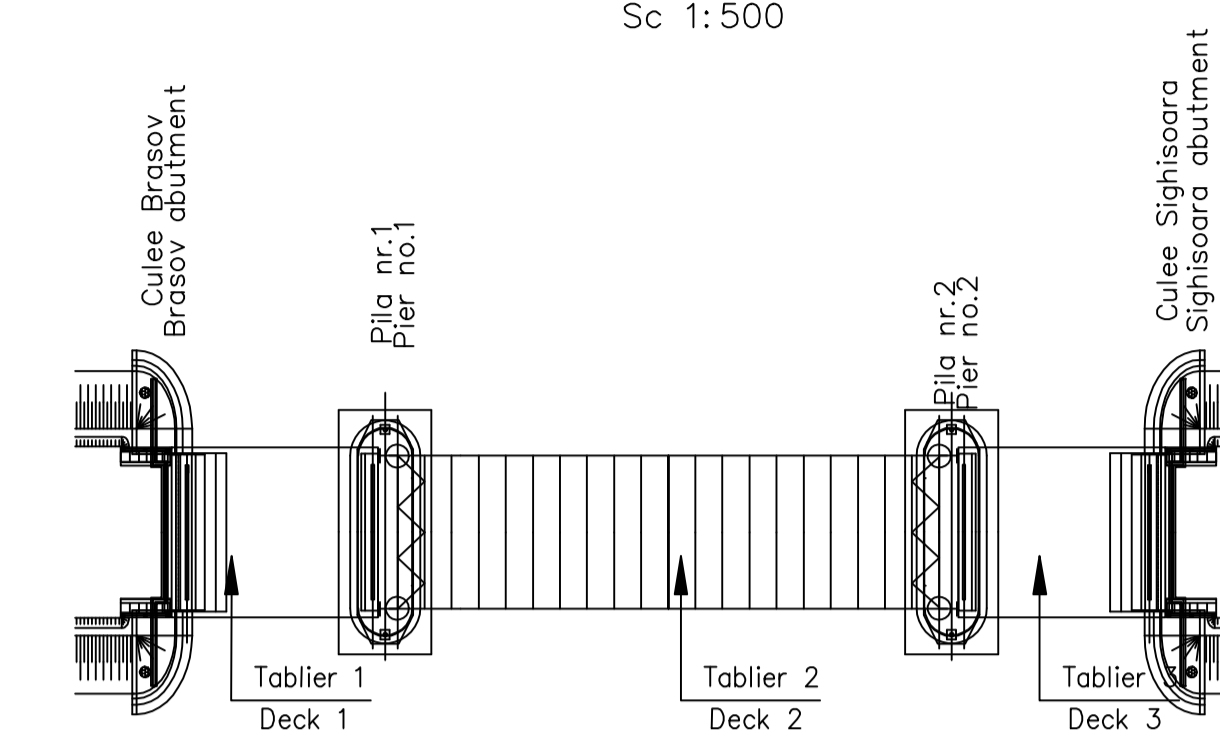
VEDERE LATERALA B-B/SIDE VIEW B-B



ELEVATIE A-A/ A-A ELEVATION



SCHEMA GENERALA /GENERAL SCHEME



ATENȚIE/ATTENTION
 Aprovizionarea aparatelor de reazem se va face inaintea executarii cuzinetilor si a banchetii acestora. In cazul in care inaltimea aparatelor de reazem aprovizionate difera fata de cea considerata in proiect se vor modifica inaltimile pe reazem corespunzator cu noile aparate.
 The bearing blocks shall be supplied before building the bearings and their seats. In case the height of the supplied bearing blocks differs from that given in the project, the heights on the seats shall be adjusted so as to comply with the new devices.

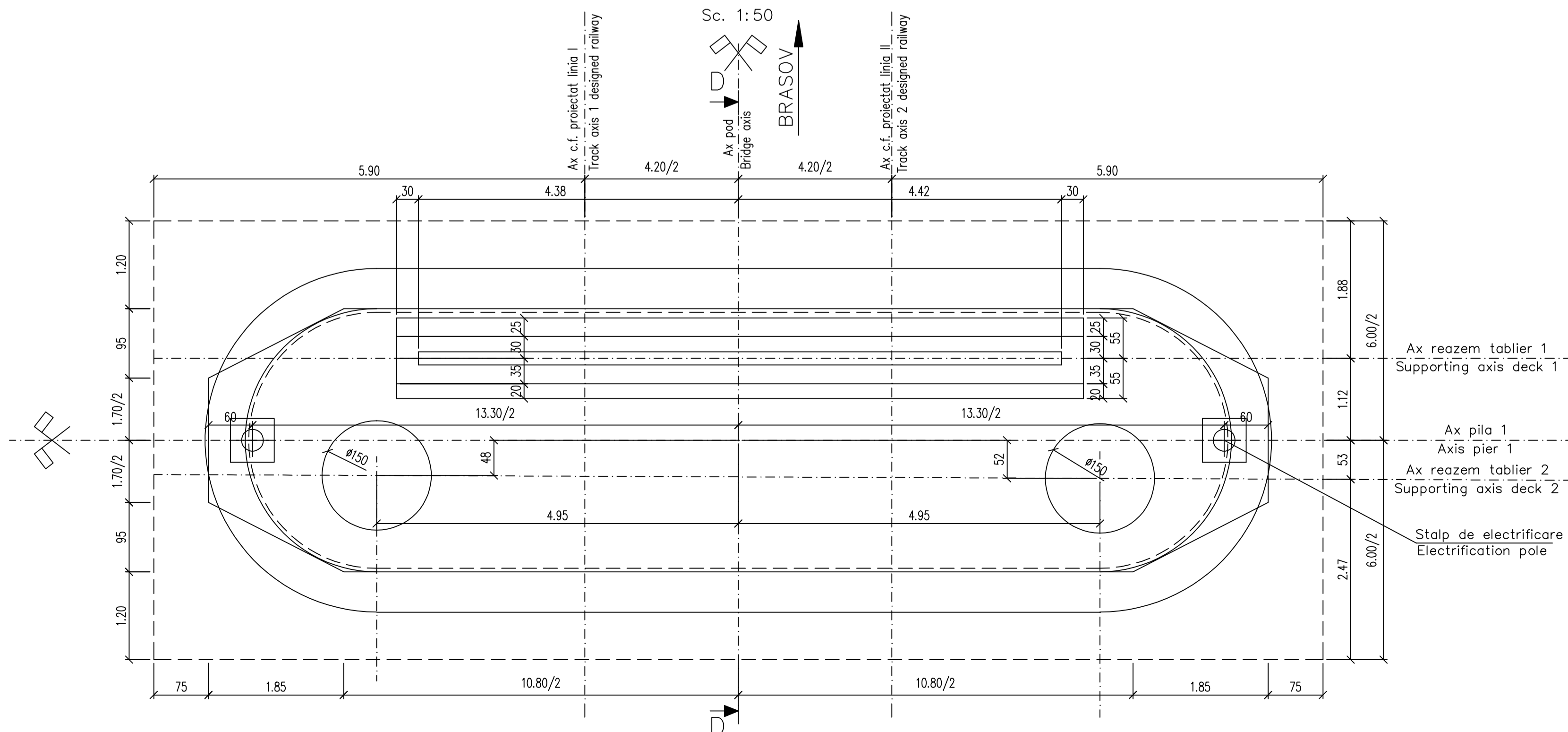
Se interzice copierea, difuzarea, imprumutarea sau utilizarea in alte scopuri, fara permisiunea ARES Lider Company ca proprietar al desenului.
 This drawing is forbidden to be copied, lent or used in other purposes than those previously approved by ARES Lider Company as its owner.

LEGENDA BETOANELOR/CONCRETE LIST

- Beton armat in cuzineti si in bancheta cuzinetilor
Reinforced concrete in the cushions and cushions bench
C 35/45-CEM I/A-S 52,5-(XC4+XF3+XA2)-A/C=0,50-D_{max}16-CI 0,20
- Beton armat in elevatie si in zidurile intoarse
Reinforced concrete in the elevation infrastructure and reverted walls
C 25/30-Ciment II/A-S 42,5-(XC4+XF3)-A/C=0,50-D_{max}32-CI 0,20
- Beton simplu in fundatii
Plain concrete in abutments foundations:
C 25/30-Ciment II/A-S 42,5-(XF3)-A/C=0,50-D_{max}32-CI 0,20
- Beton in fundatia sferturilor de con
Concrete in the protection layer of the waterproofing
C 25/30-Ciment II/A-S 32,5-(XF1)-A/C=0,50-D 32-CI 0,20
- Beton in stratul de protectie al hidroizolatiei
Concrete in the protection layer of the waterproofing
C 25/30-Ciment II/A-S 32,5-(XC4+XF3)-A/C=0,50-D_{max}16-CI 0,20

In cazul in care temperatura in timpul turnarii este scazuta, se vor folosi cimenturile cu rezistenta initiala mare, R si aditivi acceleratori, iar in cazul turnarii pe timp cald, cimenturile cu rezistenta initiala uzuala, N si aditivi intarziatori (conf.NE 012-99 si tabelului 2, din SR EN 197-1:2002).
 When the temperature during the casting is low, cements with high initial resistance, R and accelerating additives shall be used and when it is cast during warm weather, cements with common initial resistance, N and delaying additives shall be used (according to the norm NE 012-99 and table 2 for the SR EN 197-1: 002).

SECTIUNE TRANSVERSALA C-C/C-C CROSS SECTION



NOTA

- Prezentul plan s-a intocmit in conformitate cu dispozitia generala EA5101C16PAPV04000020-2011.
- Execuția partii superioare de cuzineti, amplasate deasupra banchetii cuzinetilor, se va face numai dupa procurarea aparatelor de reazem. Nivelele superioare ale cuzinetilor se vor stabili dupa procurarea aparatelor de reazem, in functie de inaltimea fiecarui tip de aparat. Execuția zidurilor intoarse si a zidului de garda se va face dupa asezarea tablierului pe reazeme.
- La executie se vor respecta cu strictete prevederile din "Cod de practica pentru producerea betonului", indicativ NE 012/1-2007 si "Normativ pentru producerea betonului si executarea lucrarilor din beton, beton armat si beton precomprimat. Partea 2: Executarea lucrarilor din beton", indicativ NE 012/2-2010, iar verificarea calitatii lucrarilor si receptiunea lor se va face conform normativului CS6-1985.
- Construcția se încadrează in categoria B de importanță. Construcții de importanță deosebită, modelul 1 de asigurare a calitatii conform HG 766/97.
- Podul corespunde la convoiule de calcul UIC (LM71 si SW/2).

NOTE:

- This plan has been drawn up according to the general disposition EA5101C16PAPV04000020-2011.
- The upper parts of the bearing placed over the bearing seat shall be built only after the procurement of the bearing blocks, the upper level of the bearings shall be established after the procurement of the bearing blocks depending on the height of the each bearing block type. The reverted walls and the guard wall shall be carried out after putting the desk on the supports.
- The execution will strictly comply with the provisions of "Practice code for concrete production NE 012/1-2007 and "Practice code for the concrete production and works execution, reinforced and pre-stressed concrete - Part 2: The execution of concrete works." NE 012/2-2010, and the quality and the reception of the works shall be made according to Norm C 56-1985.
- The construction is classified in the B category of importance. Special importance constructions, model 1 for quality ensuring according to HG 766/97.
- Bridge convoys calculation corresponds to UIC (LM71 and SW/2).

C							
B							
A	12.2011	Revizua 1 / Revision	Dinu Andreea	Aprobat Consultant / Approved Consultant	Aprobat CFR / Approved CFR		
Index	Date	Proiectant / Designer	Modificari / Modifications	Aprobat Consultant / Approved Consultant	Aprobat CFR / Approved CFR		
		GVERNUL ROMANIEI / ROMANIAN GOVERNMENT		PROIECT FINANȚAT DE UNIUNEA EUROPEANĂ / EUROPEAN UNION FINANCED PROJECT			
		CFR		C.N.C.F. "C.F.R." - S.A.			
		CLIENT / CLIENT					
		ITALPEAR		OBERMEYER		TECNIC	
		CONSULTANT / CONSULTANT					
		Aprobat / Approved		R. Luzzza		Date / Date	
		Aprobat / Approved		C. Gambelli		Semnatura / Signature	
		Verificat / Checked		V. Kallidromitis			
		SUBCONTRACTANT / SUBCONTRACTOR					
		Aprobat / Approved		A.Stancu - Dinulescu		11.2011	
		Intocmit / Elaborated		Dinu Andreea		11.2011	
		Reabilitarea liniei de cale ferata Brasov - Simeria, parte componenta a coridorului IV Pan European, pentru circulatia trenurilor cu viteza maxima de 160 km/h, Tronsoanel: Brasov - Sighisoara				Proiect/Project 2004/RO16/PPA003	
		Rehabilitation of the railway line Brasov - Simeria, component Part of the IV Pan-European Corridor, for the trains circulation with maximum speed of 160 km/h, Section : Brasov - Sighisoara				Faza / Phase: P.Th. / T.D. D.E. / E.D.	
		Denumire desen / Drawing Title:		INTERVAL / SECTION ARCHITA - VANATORI			
				POD / BRIDGE Km 267+963.152 D=12.00m+35.00m+12.00m			
				PLAN COFRAJ PILA NR.1 / PIER NO.1 FORMWORK PLAN			
		Codificare / Codification System		Scara / Scale 1:50		Nr. / No 01 / 01	
		E A 5 1 0 1 E 1 6 B B P V 0 4 0 2 0 0 6 1					