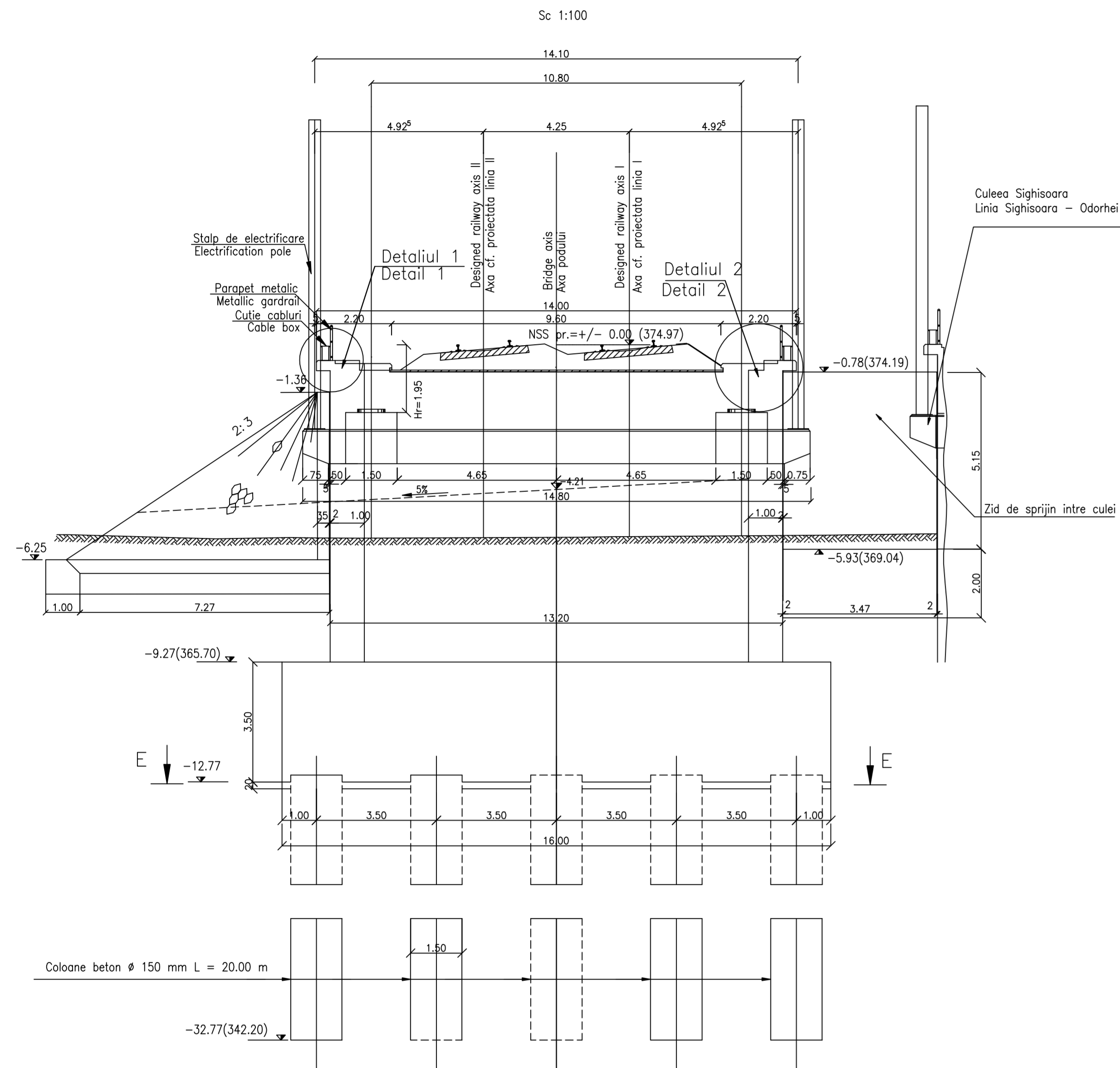
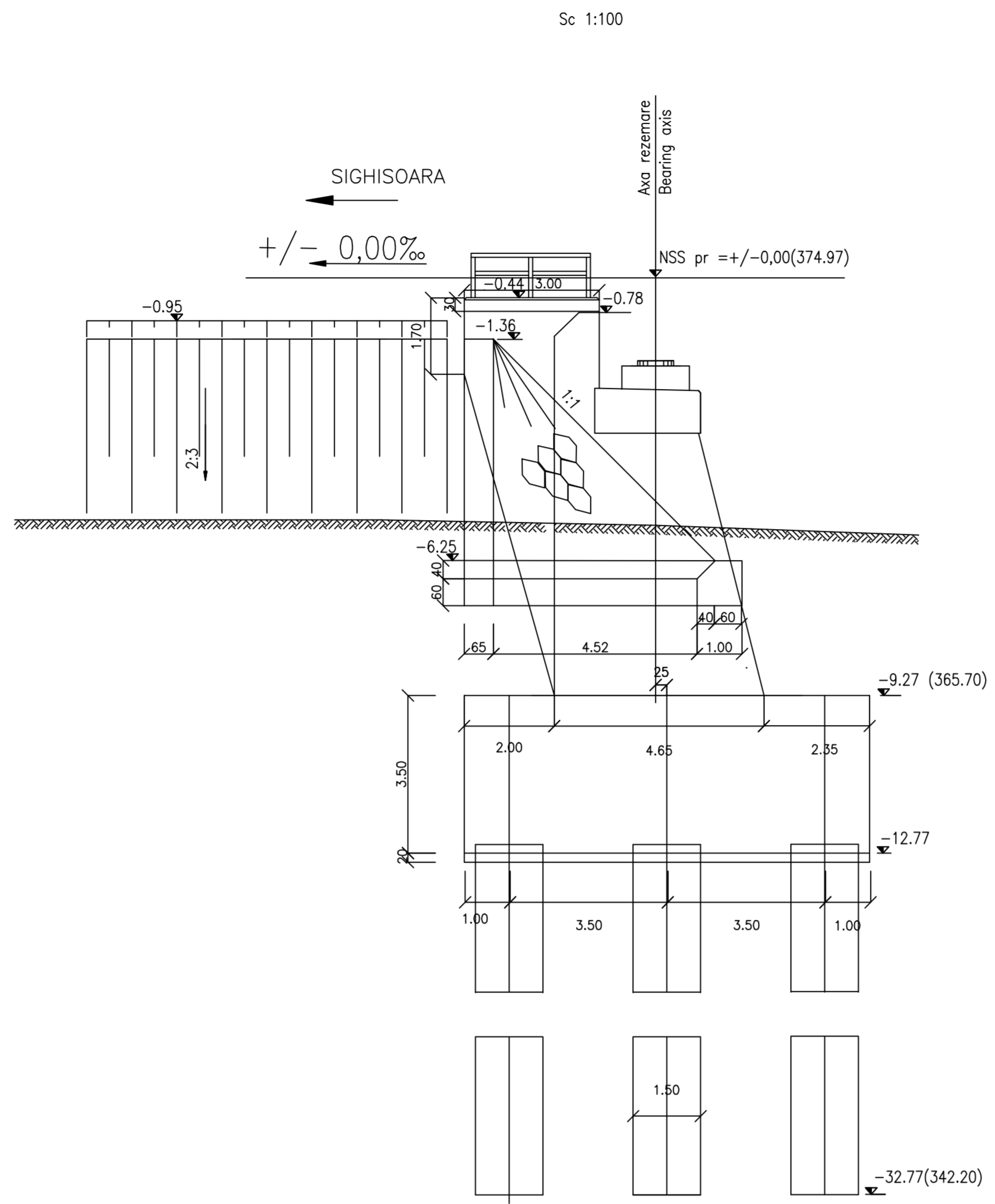


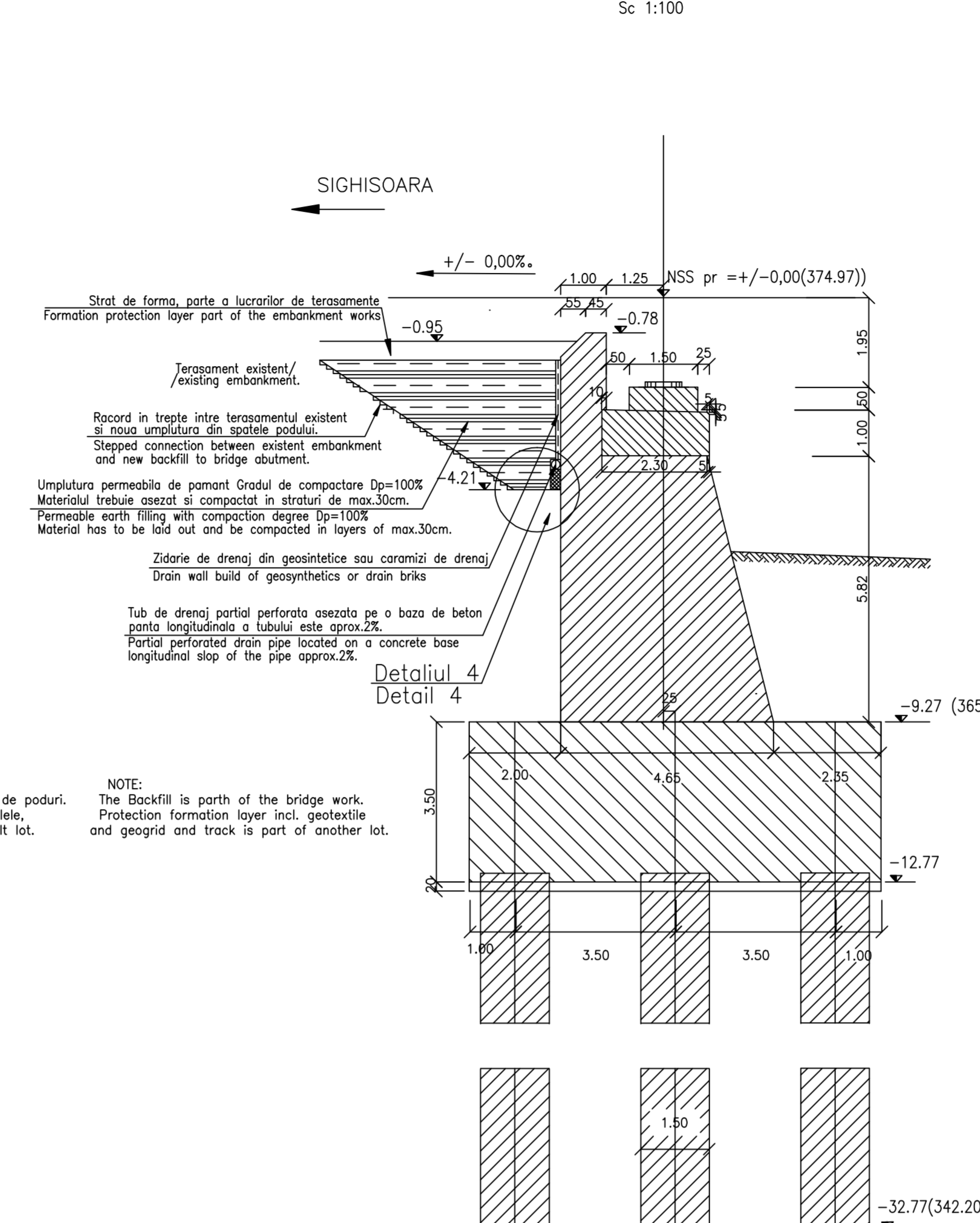
VEDERE A-A / A-A VIEW



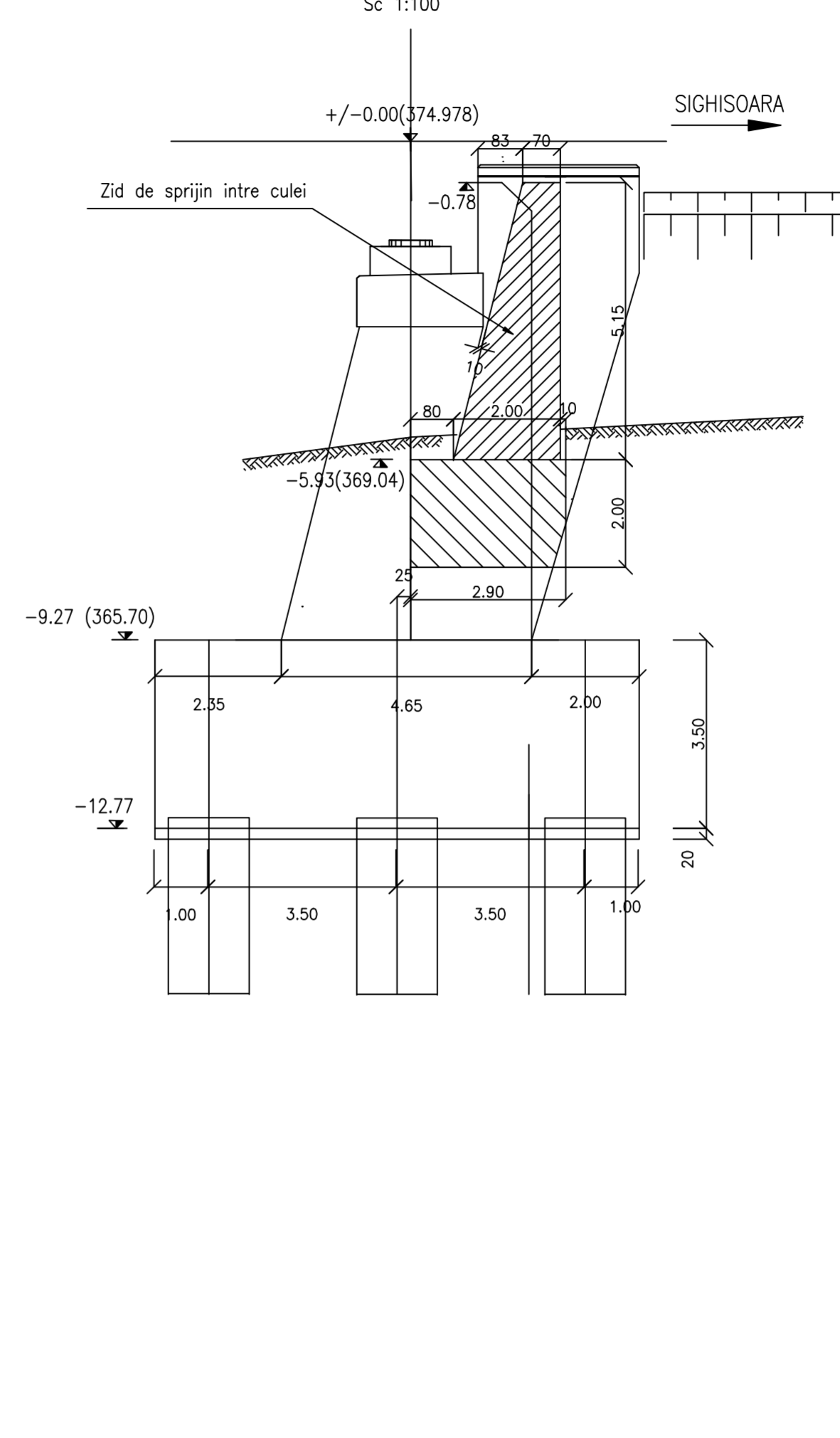
VEDERE C-C/C-C VIEW



SECTIUNEA B-B



SECTIUNEA D-D / D-D SECTION



NOTA

1. Prezentul plan s-a intocmit in conformitate cu dispozitia generala
2. Executia partilor superioare ale cuzinetelor, amplasate deasupra banchetelor cuzinetelor, se va face numai dupa procurarea aparatelor de reazem.
3. La executia se vor respecta cu strictete prevederile din "Normativ pentru producerea betonului", indicativ NE 012/1-2007 si "Normativ pentru producerea betonului si executarea lucrarilor din beton, beton armat si beton precomprimat. Partea 2: Executarea lucrarilor din beton", indicativ NE 012/2-2010, iar verificarea calitatii lucrarilor si receptiunea lor se va face conform normativului C56-1985.
4. Constructia se incadreaza in categoria B de importanta. Constructii de importanta deosebita, modelul 1 de asigurare a calitatii conform HG 766/97.
5. Podul corespunde la convoiule de calcul UIC (LM71 si SW/2).

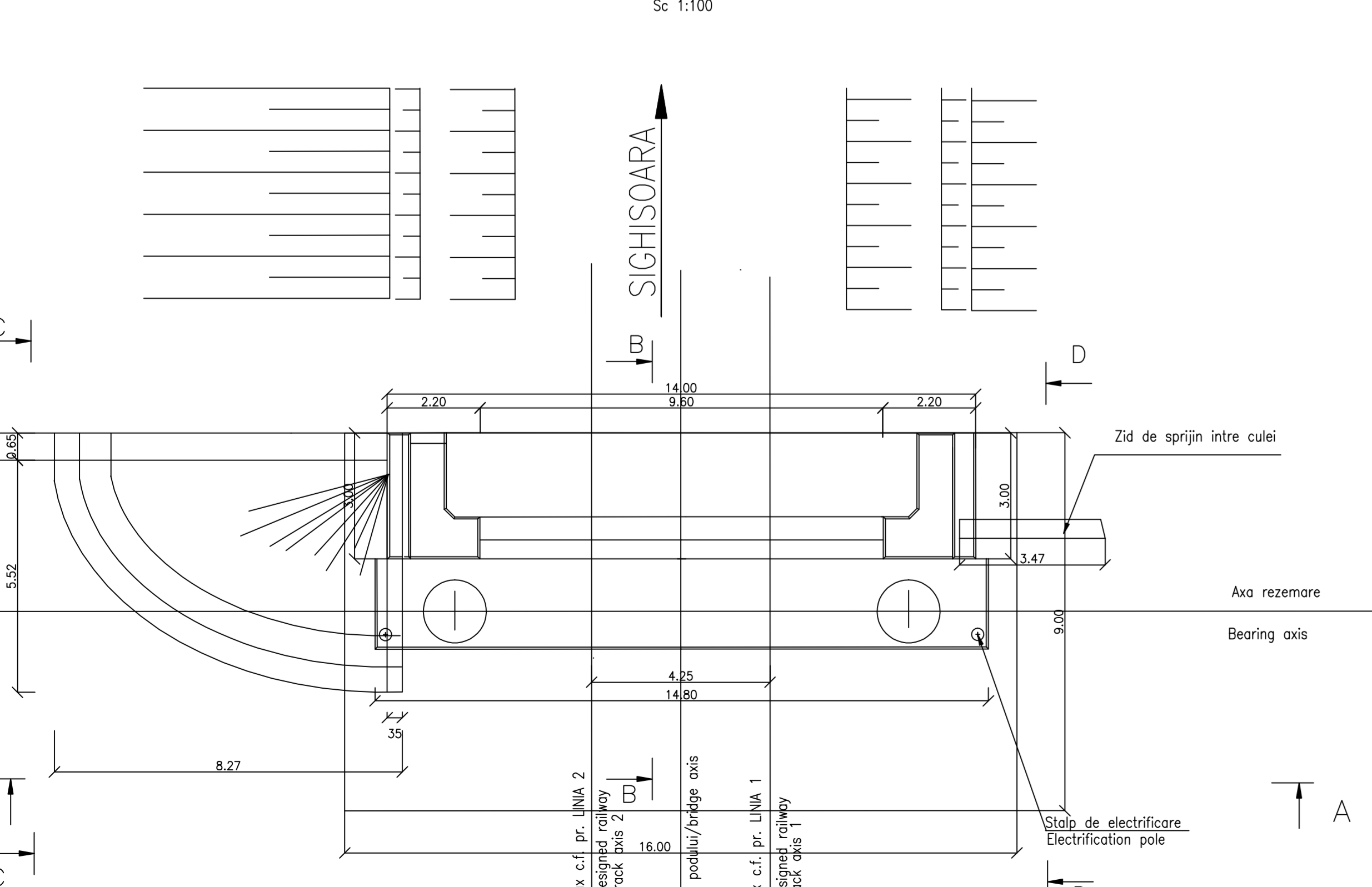
NOTE:

1. This plan has been drawn up according to the general disposition
2. The upper parts of the bearing placed over the bearing seat shall be built only after the procurement of the bearing blocks, the upper level of the bearings shall be established after the procurement of the bearing blocks depending on the height of the each bearing block type. The reverted walls and the guard wall shall be carried out after putting the desk on the supports.
3. The execution will strictly comply with the provisions of "Practice code for concrete production NE 012/1-2007 and "Practice code for the concrete production and works execution, reinforced and pre-stressed concrete - Part 2: The execution of concrete works", NE 012/2-2010, and the quality and the reception of the works shall be made accordingly to Norm C 56-1985.
4. The construction is classified in the B category of importance. Special importance constructions, model 1 for quality ensuring according to HG 766/97.
5. Bridge convoys calculation corresponds to UIC (LM71 and SW/2).

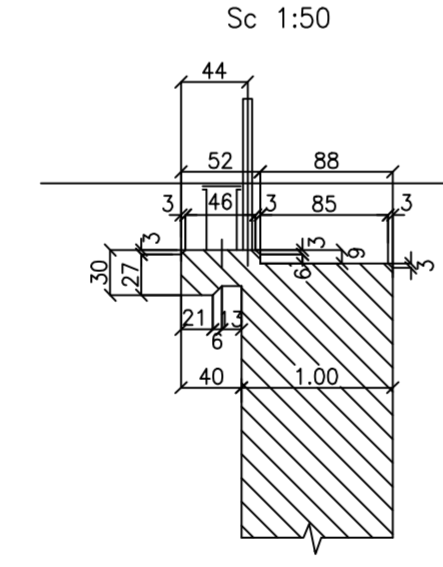
Aprovizionarea aparatelor de reazem se va face inaintea executarii cuzinetelor si a banchetelor acestora in cazul care inclinaia aparatelor de reazem aprovizionate diferita fata de cea considerata in proiect se vor modifica inaltimile pe reazem corespunzator cu noile aparate. The bearing blocks shall be supplied before building the bearings and their seats. In case the height of the supplied bearing blocks differs from that given in the project, the heights on the seats shall be adjusted so as to comply with the new devices.

This drawing is forbidden to be copied, lent or used in other purposes than those previously approved by ARES Lider Company as its owner. Se interzice copierea, difuzarea, imprumutarea sau utilizarea in alte scopuri, fara permisiunea ARES Lider Company ca proprietar al desenului.

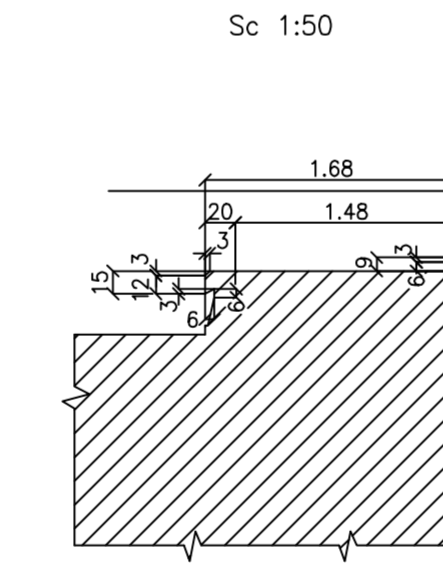
PLAN / PLANE VIEW



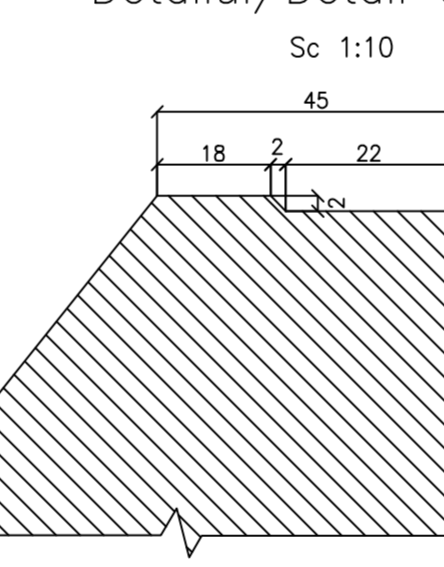
Detaliul/Detail 1



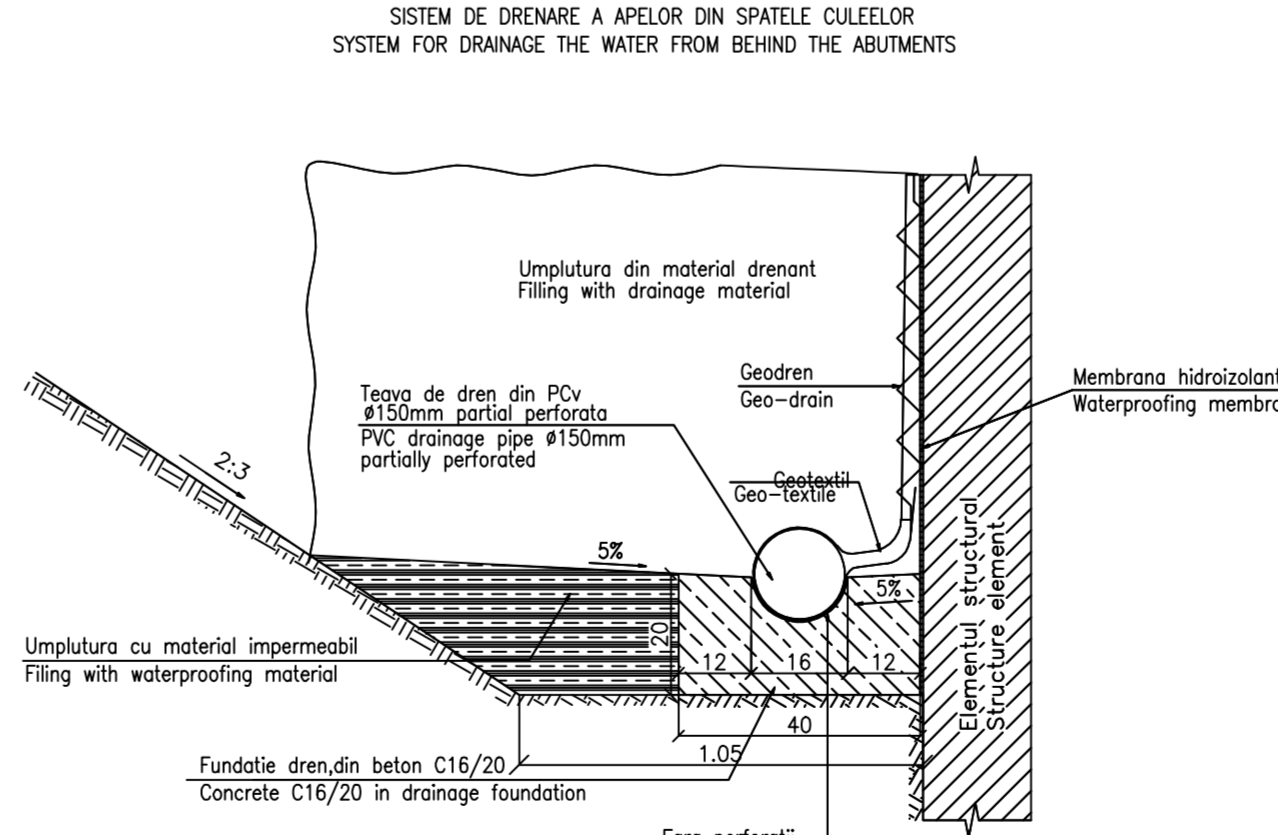
Detaliul/Detail 2



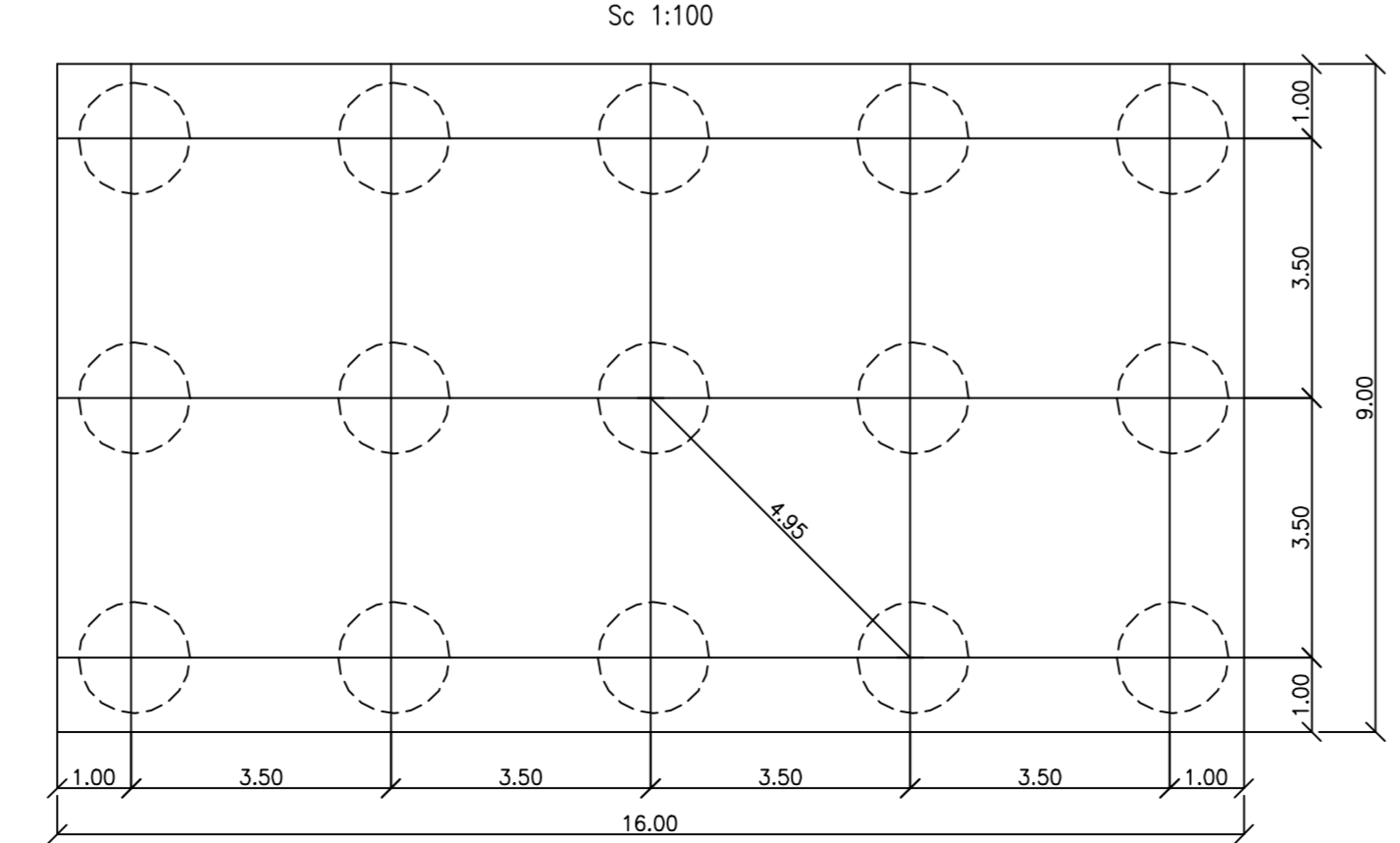
Detaliul/Detail 3



Detaliul 4 / 4 Detail



SECTIUNEA E-E/E-E SECTION



LEGENDA BETOANELOR/CONCRETE LIST

- Beton armat in cuzineta si in bancheta cuzinetelor
- Reinforced concrete in the cushions and cushions bench
- C 35/45-CEM I/A-S 52,5-(XC4+XF3+XA2)-A/C=0,50-D 16-CI 0,20 max
- Beton armat in fundatii indirecte (coloane si radiere) si in elevatii
- Plain concrete in abutments foundations:
- C 25/30-CEM II/A-S 42,5-(XC4+XF3)-A/C=0,50-D 32-CI 0,20 max
- Beton simplu in fundatii si elevatii arilorilor
- Simple concrete foundations and elevation in the wings:
- C 25/30-CEM II/A-S 32,5-(XF3)-A/C=0,50-D 32-CI 0,20 max
- Beton de egalizare
- Concrete leveling
- C 25/30-CEM II/A-S 32,5-(XF3)-A/C=0,55-D 16-CI 0,20 max

In cazul in care temperatura in timpul turnarii este scazuta, se vor folosi cimenturile cu rezistenta initiala mare, R si aditivi acceleratori, iar in cazul turnarii pe timp cald, cimenturile cu rezistenta initiala uzuala, N si aditivi intarziatori (conf. NE 012/2-2010 si tabelului 2 din SR EN 197-1:2002). When the temperature during the casting is low, cements with high initial resistance, R and accelerating additives shall be used and when it is cast during warm weather, cements with common initial resistance, N and delaying additives shall be used (according to the norm NE 012/2-2010 and table 2 for the SR EN197-1:2002).

D					
C					
B					
A	12.2011	Revizua 1 1 Revision	Constantin Miculeta Projectant	Approved Consultant Approved Designer	Approved CFR Approved Designer
Index	Date	Modificari Modification/Revision	Constituiti Miculeta Projectant	Approved Consultant Approved Designer	Approved CFR Approved Designer
CLIENT / CLIENT					
		C.N.C.F. "C.F.R." - S.A.			
CONSULTANT / CONSULTANT		Sef proiect Project manager R. Lizzaza		Data Date	
Approbat Approved Constantin Miculeta		Sef proiect Section 1 Coordinator C. Gambelli		Semnatura Signature C. Gambelli	
Verificat Checked V. Kallidromitis		Expert Expert V. Kallidromitis		Verificat Checked V. Kallidromitis	
SUBCONTRACTANT / SUBCONTRACTOR					
Responsabil Subcontractant Responsible A. Dulescu Stancku		Responsabil Responsible Constantin Miculeta		11.2011 11.2011	
Reabilitarea liniei de cale ferata Brasov - Simeria, parte componenta a coridorului IV Pan European, pentru circulatia trenurilor cu viteza maxima de 160 km/h. Reabilitarea liniei de cale ferata Brasov - Simeria, parte componenta a coridorului IV Pan-European Corridor, for the trains circulation with maximum speed of 160 km/h, Section : Brasov - Sighisoara		Transmisori : Brasov - Sighisoara Section : Brasov - Sighisoara		Proiect/Project 2004/0016/PPA.003 Faza / Phase: P.Th. / T.D.	
Denumire desen / Drawing Title : INTERVAL / SECTION ARCHITA - VANATORI		POD / BRIDGE Km 269+868,474 D=45.00m PLAN COFRAJ CULEEA SIGHISOARA pod cale dubla / FORMWORK PLANE SIGHISOARA ABUTMENT double railway bridge			
Codificare / Codification System		Scara / Scale 1:100 1:50 1:10		Lot / LOT Nr. / No 01/01	
E	A51	01	E	16	BB
					PV
					04
					1
					2
					004
					1