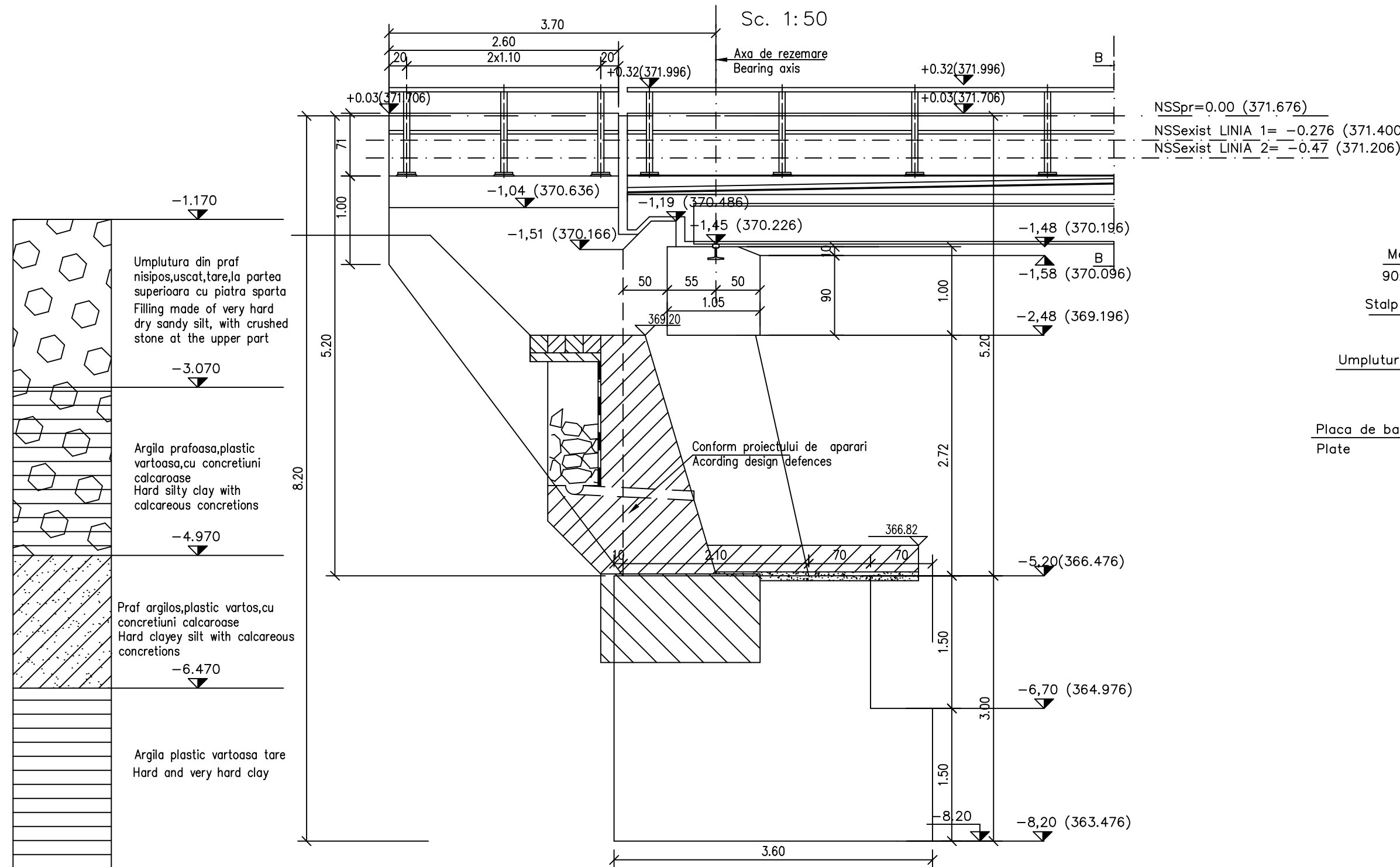
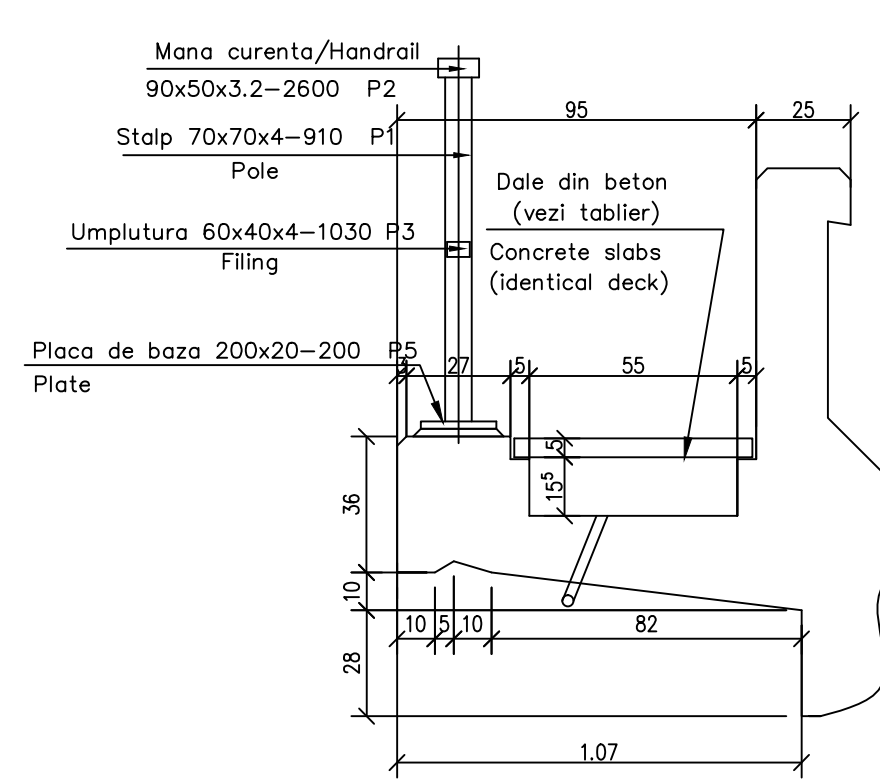


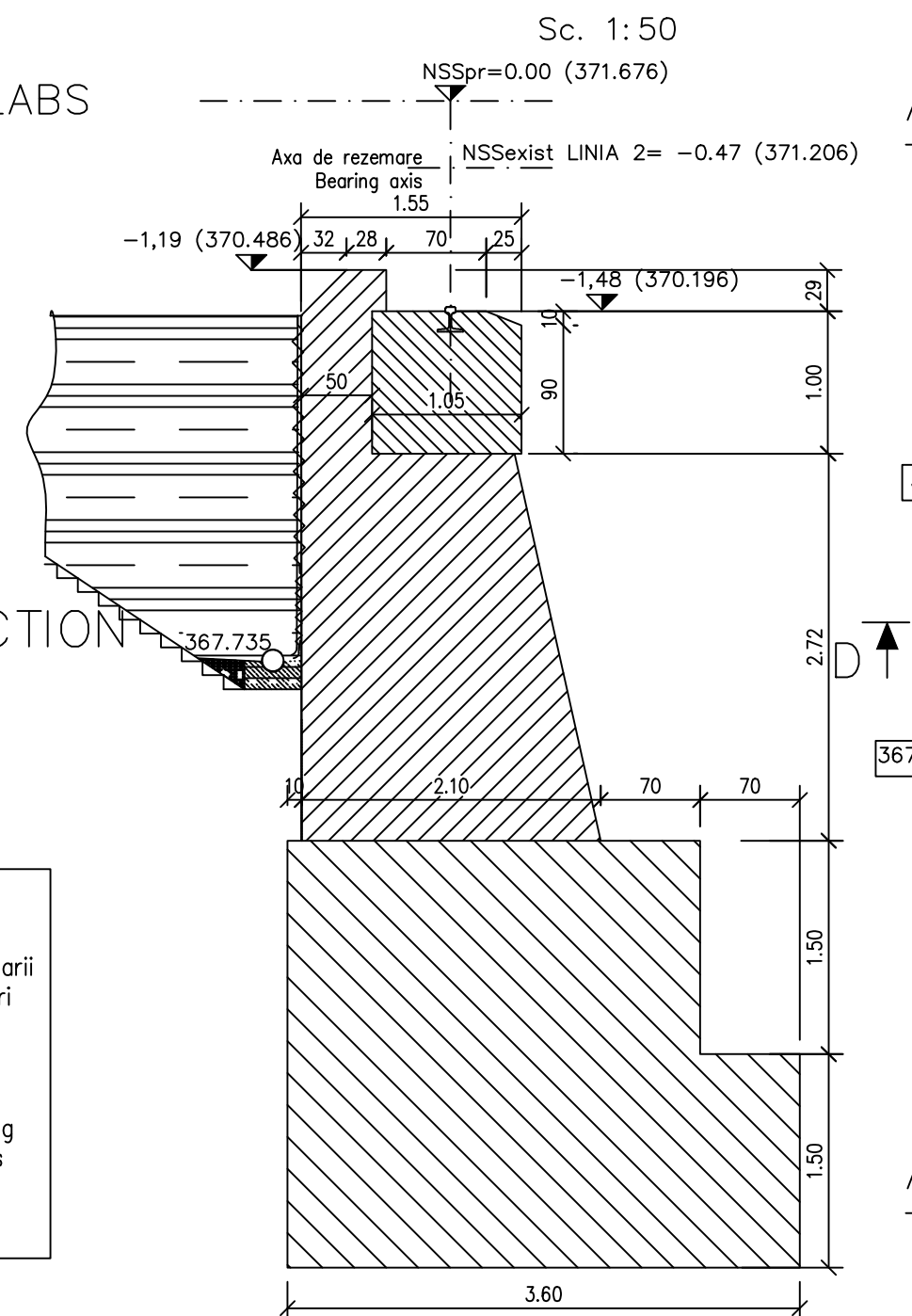
VEDERE A-A CULEEAA  
A-A ABUTMENT VIEW



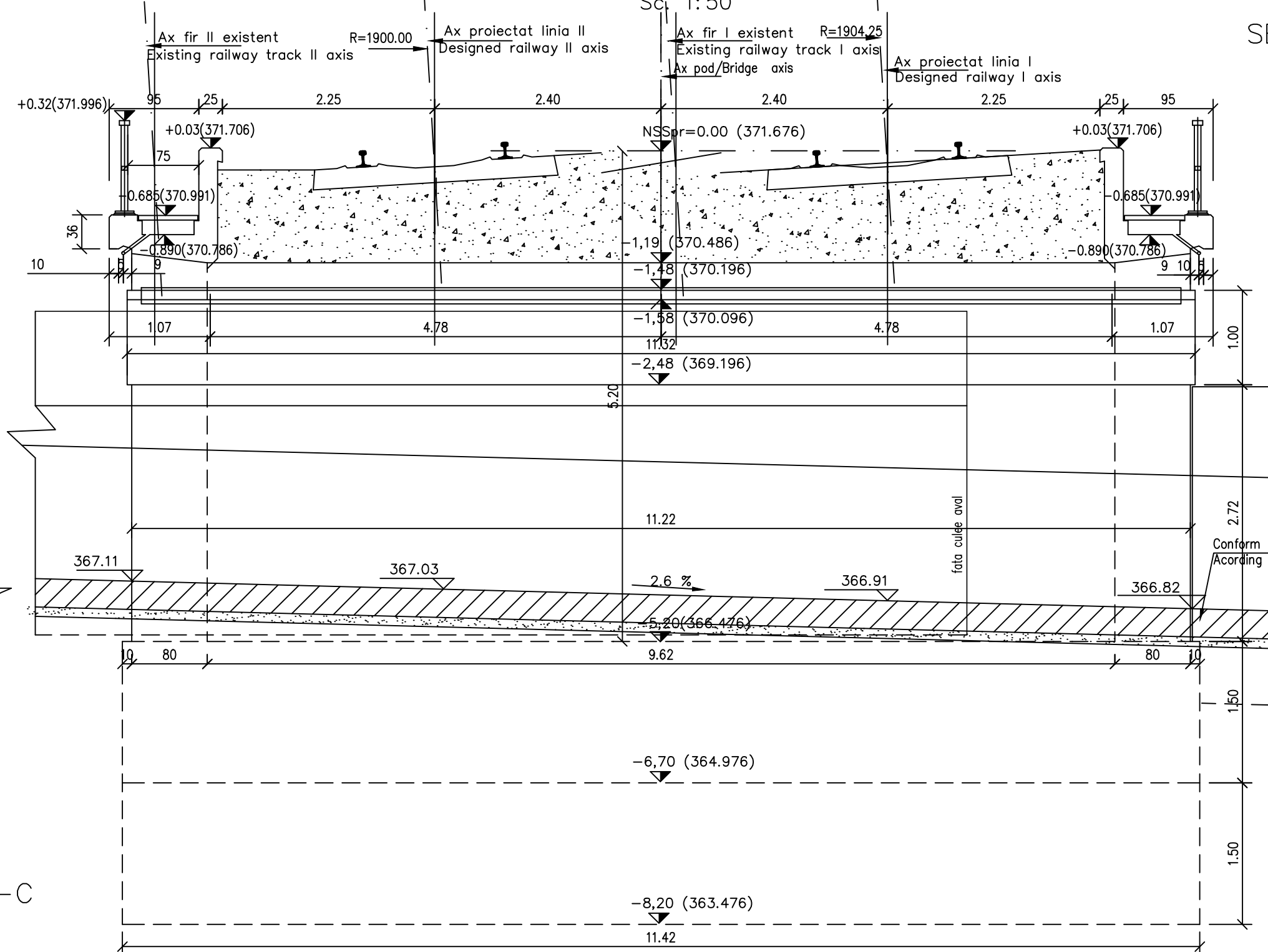
DETALIU TROTUAR/SIDEWALK  
Sc. 1:20



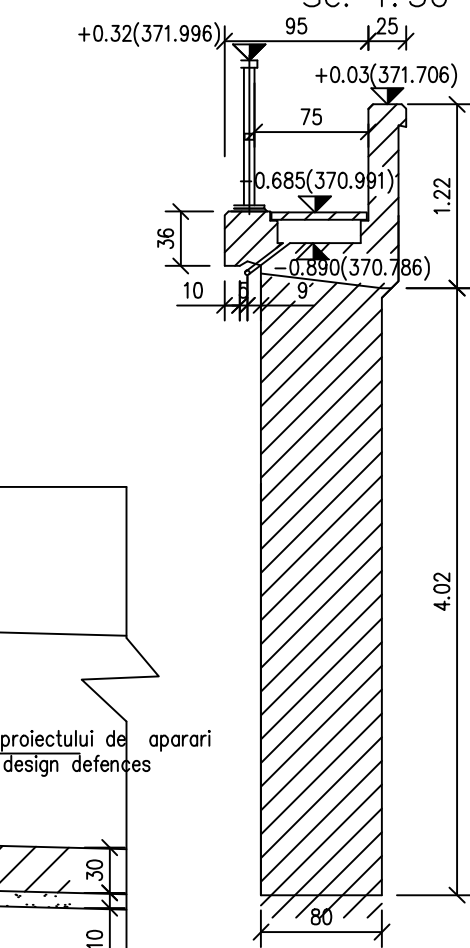
SECTIUNE TRANSVERSALA C-C  
C-C CROSS SECTION  
Sc. 1:50



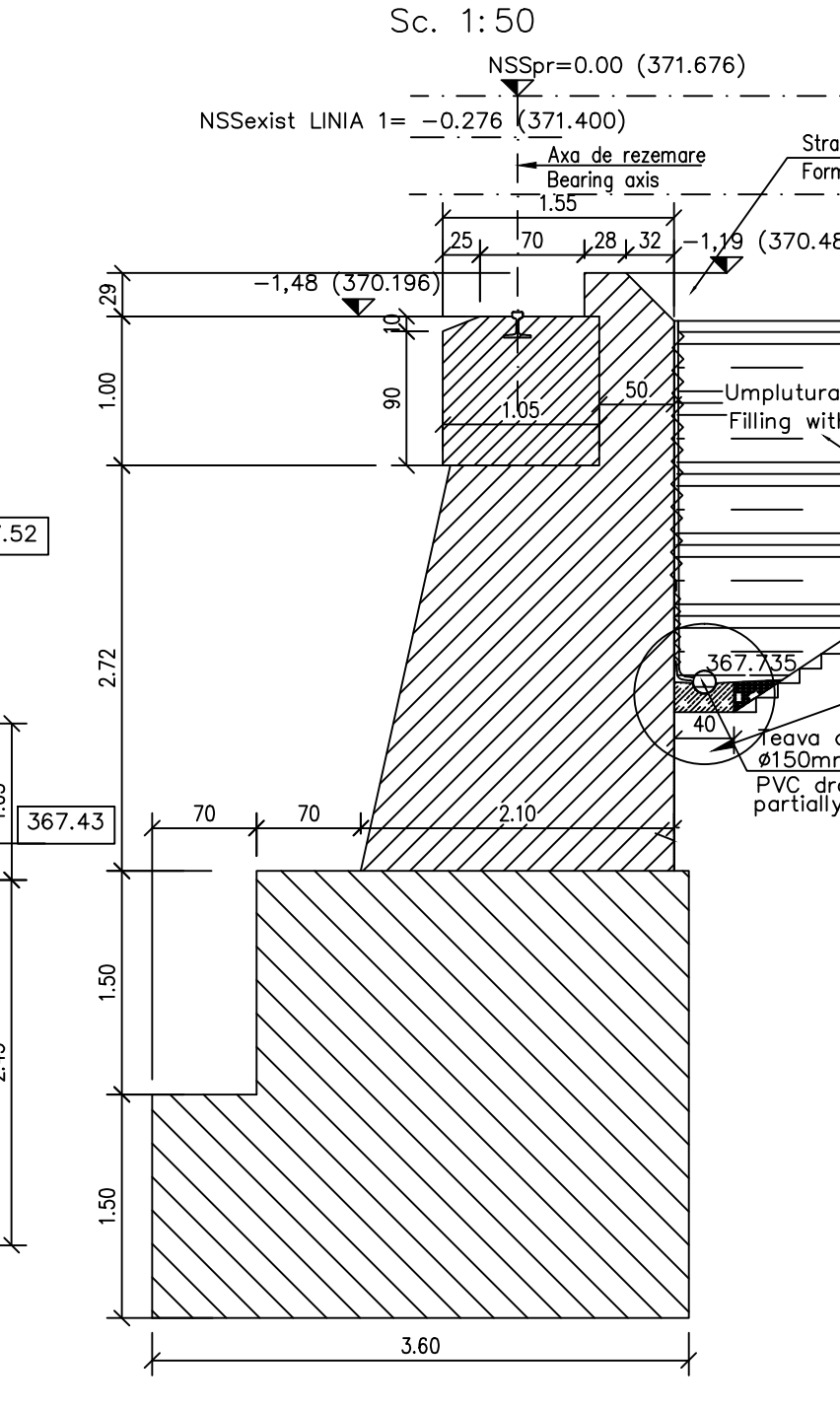
SECTIUNE TRANSVERSALA B-B  
B-B CROSS SECTION  
Sc. 1:50



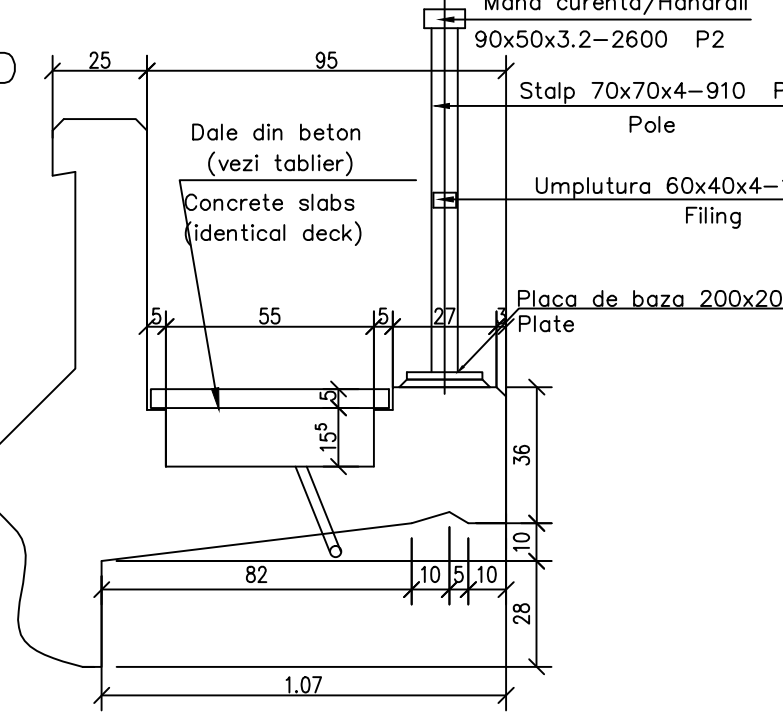
SECTIUNE TRANSVERSALA D-D  
D-D CROSS SECTION  
Sc. 1:50



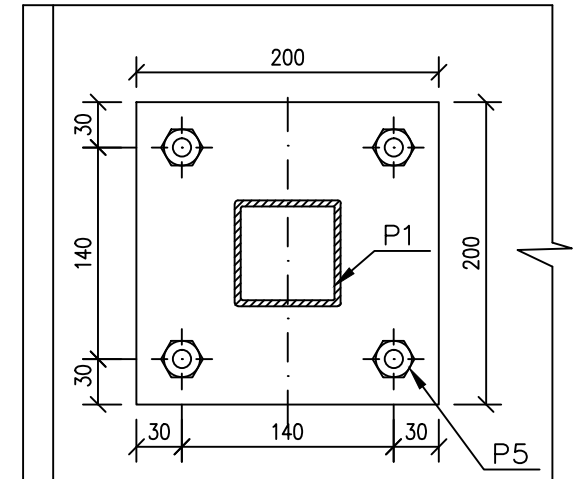
SECTIUNE TRANSVERSALA D-D  
D-D CROSS SECTION  
Sc. 1:50



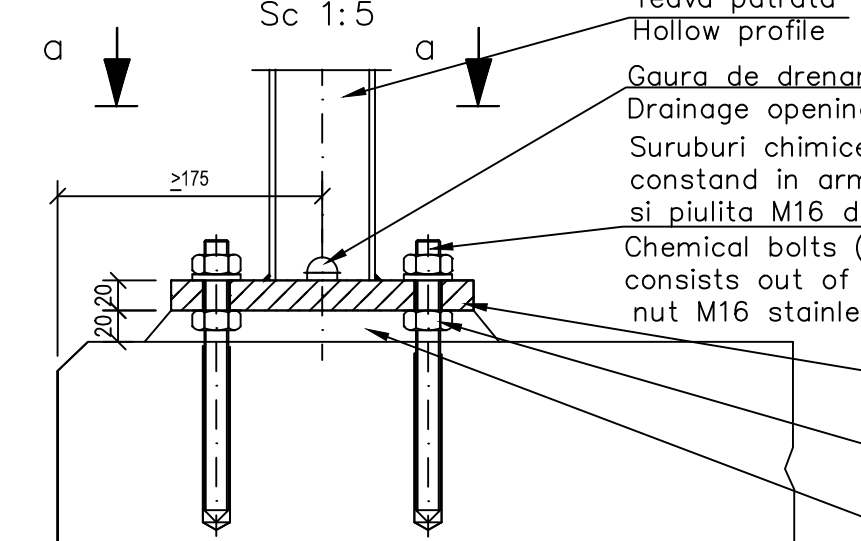
DETALIU TROTUAR/SIDEWALK  
Sc. 1:20



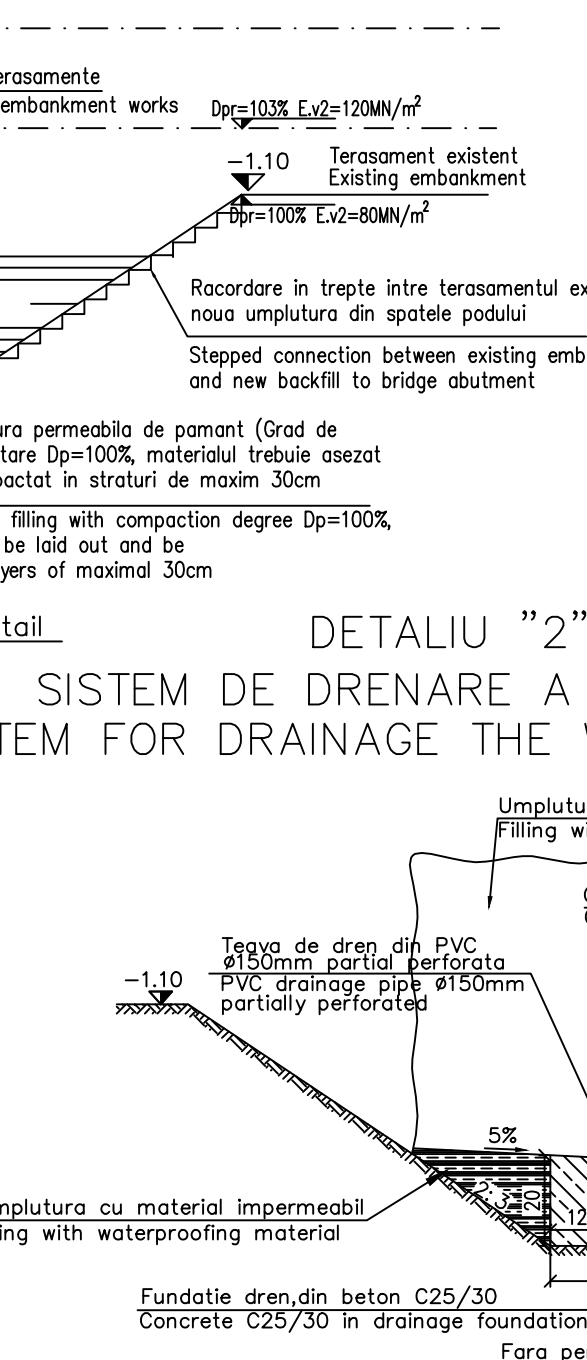
SECTIUNE a-a/a-a SECTION  
Sc. 1:5



DETALIU "A" DE PRINDERE A PARAPETULUI  
"A" DETAIL HANDRAIL FASTENING  
Sc. 1:5

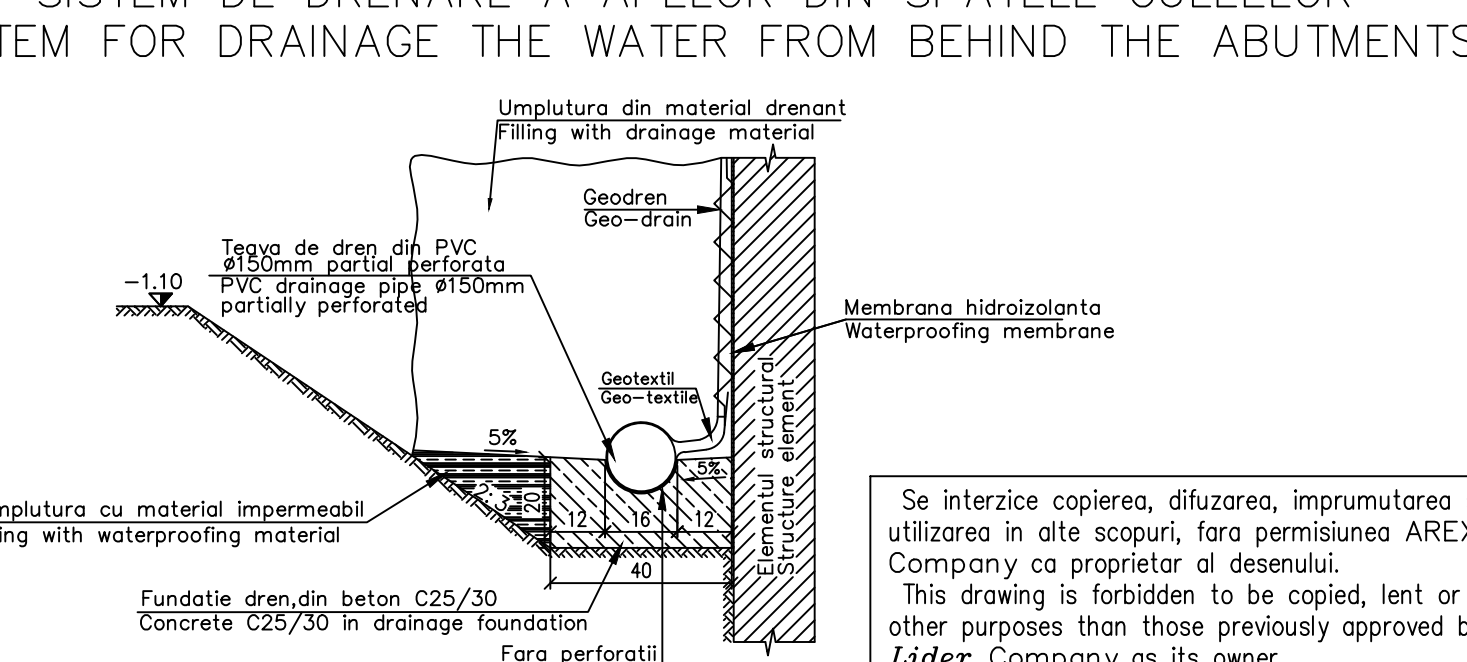


SECTIUNE TRANSVERSALA D-D  
D-D CROSS SECTION  
Sc. 1:50

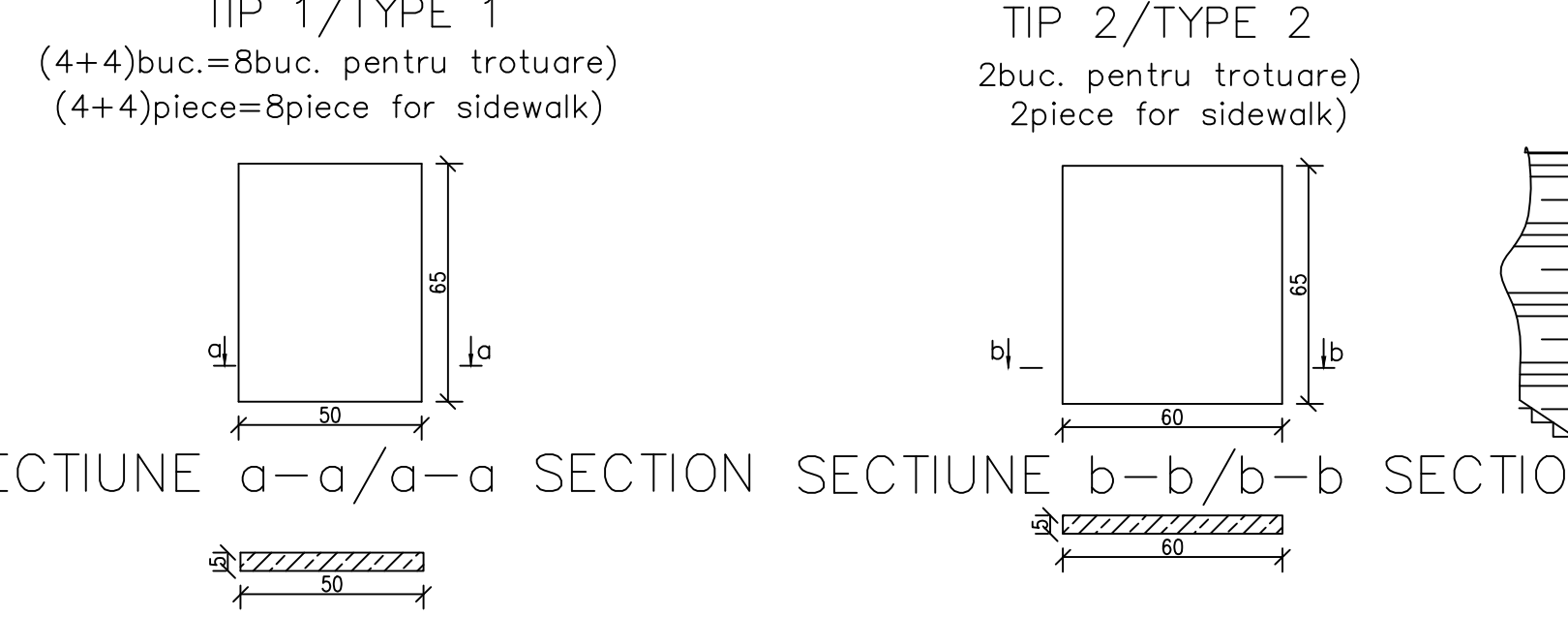


- Beton: - C35/45 bancheta cuzinetilor/bearing bench  
Concrete: - C25/30 elevatia infrastructurii/substructure elevation  
- C25/30 beton simplu in fundatii/plain concrete in abutments foundations:  
- S 355; S 345
- Armatura:  
Strat de acoperire: - min. 4cm expunere in aer/4cm air exposed  
Concrete cover  
Clasa de incarcare: - convoiu UIC (LM71 si SW/0)  
Load class:  
Cofraj: - Metal sau lemn/Steel or wood  
Formwork:

DETALIU "2" / "2" DETAIL "2"  
SISTEM DE DRENARE A APELOR DIN SPATELE CULEELOR  
SYSTEM FOR DRAINAGE OF THE WATER FROM BEHIND THE ABUTMENTS



DALE PREFABRICATE DIN BETON / CONCRETE PREFAB SLABS  
Sc. 1:20



LEGENDA BETOANELOR/CONCRETE LIST

- Beton armat in cuzineti si in bancheta cuzinetilor  
Reinforced concrete in the cushions and cushions bench  
C 35/45-CEM II/A-S 42,5-(XC4+XF3+XA2)-A/C=0,50-D<sub>32</sub>-Cl 0,20
- Beton armat in elevatie si in zidurile intoarce  
Reinforced concrete in the elevation infrastructure and reverted walls  
C 25/30-Ciment H II/A-S 42,5-(XC4+XF3)-A/C=0,50-D<sub>32</sub>-Cl 0,20
- Beton simplu in fundatii:  
Plain concrete in abutments foundations:  
C 25/30-Ciment H II/A-S 42,5-(XF3)-A/C=0,50-D<sub>32</sub>-Cl 0,20

NOTA  
In cazul in care temperatura in timpul turnarii este scazuta, se vor folosi cimenturile cu rezistenta initiala mare, R si aditivii acceleratori, iar in cazul turnarii pe timp cald, cimenturile cu rezistenta initiala uzata, N si aditivii intarziatori (conf.NE 012/2-2010 si tabelului 2 din SR EN 197-1:2002)

NOTA  
When the temperature during the casting is low, cements with high initial resistance, R and accelerating additives shall be used and when it is cast during warm weather, cements with common initial resistance, N and delaying additives shall be used (according the norm NE 012/2-2010 and table 2 for the SR EN 197-1: 002).

NOTA

- Prezentul plan s-a intocmit in conformitate cu dispozitiile generale.
- Padul corespunde la convosiile de calcul UIC (LM71 si SW/2).
- La executie se vor respecta cu strictete prevederile din "Normativ pentru producerea betonului", indicativ CP 012/1-2007 si "Normativ pentru producerea betonului si executarea lucrarilor din beton, beton armat si beton precomprimat. Partea 2: Executarea lucrarilor din beton", indicativ NE 012/2-2010, iar verificarea calitatii lucrarilor si receptionarea lor se va face conform normativului CSB-1985.
- Construcția se încadrează în categoria B de importanță. Construcții de importanță deosebită, modelul 1 de asigurare a calitatii conform HG 766/97.
- Proiectul va fi verificat la exigentele A4.2; B2.2; D2.2.

ATENTIE/ATTENTION

Aprovizionarea aparatelor de reazem se va face inaintea executarii cuzinetilor si a banchetei acestora. In cazul in care inaltimea aparatelor de reazem aprovisionate diferă fata de cea considerata in proiect se vor modifica inaltimele pe reazem corespunzator cu noile aparate.  
The bearing blocks shall be supplied before building the bearings and their seats. In case the height of the supplied bearing blocks differs from that given in the project, the heights on the seats shall be adjusted so as to comply with the new devices.

MASURATOAREA MATERIALULUI METALIC NECESAR PENTRU PARAPETUL LA CULEEAA PREDEAL  
MEASUREMENT FOR THE METALLIC MATERIAL REQUIRED FOR THE FOOT PATH FOR PREDEAL ABUTMENT

Poz.	Denumire	Dimensiuni	Nr. buc. asemenenea	Greutate S235					
				kg/ml	kg/buc.	Total(kg)			
0	1	2	3	4	5	6			
P1	Teava patrata Hollow profile	70x70x4-910	6	8.29	7.54	45.26			
P2	Teava dreptunghiulara Hollow profile	90x50x3.2-2600	2	6.71	17.45	34.90			
P3	Teava dreptunghiulara Hollow profile	60x40x4-1030	4	5.78	6.00	24.00			
P4	Teava dreptunghiulara Hollow profile	60x40x4-215	4	5.78	1.25	5.00			
P5	Placa de baza Plate	200x20-200	6	31.40	6.28	37.68			
	Suruburi M16 Bolts M16	ø16-130	24	-	0.23	5.55			
	Piulițe M16 Nuts M16	-	48	-	0.03	1.50			
	Saibe Washers	-	24	-	0.01	0.30			
Total partial						154.190			
Spor 3% pt. sudura						4.65			
TOTAL (kg)						160.00			

D					
C					
B					
A	12.2011	Revizua 1 1 Revision		Dinu Andreea	
Indice	Data	Modificare Modification/Revision	Proiectant Designer	Aprobat Consultant Approved Consultant	Aprobat CFR Approved CFR



CLIENT / CLIENT  
C.N.C.F. "C.F.R." - S.A.



CONSULTANT / CONSULTANT		Data	Semnatura Signature
Aprobat Approved	Şef proiect Project manager	R. Liuzza	
Intocmit Elaborated	Coordonator Coordinator	C. Gambelli	
Verificat Checked	Expert Cheie Checking Expert	V. Kallidromitis	

SUBCONTRACTANT / SUBCONTRACTOR		Data	Semnatura Signature
Aprobat Approved	Responsabil Subconsultant Subconsultant Responsible	A. Dinulescu Stanciu	07.2011
Intocmit Elaborated	Proiectant Designer	Dinu Andreea	07.2011

Reabilitarea liniei de cale ferata Braşov - Simeria, parte componentă a coridorului IV Pan European, pentru circulația trenurilor cu viteză maximă de 160 km/h,  
Rehabilitation of the railway line Braşov - Simeria, component Part of the IV Pan-European Corridor, for the trains circulation with maximum speed of 160 km/h,  
Tronsoanel: Braşov - Sighişoara  
Section: Braşov - Sighişoara

Denumire desen / Drawing Title: Interval Archita - Vanatori  
POD Km. 273+693.416 L=9.00m/COFRAJ CULEI  
BRIDGE Km. 273+693.416 L=9.00m/ ABUTMENTS FORMWORK

Codificare / Codification System	Scara / Scale 1:20; 1:5; 1:10; 1:50	LOT / LOT	Nr. / No 01 / 01
E A 5 1 0 1 E 1 8 B B P V 0 4 2 2 0 0 5 1			