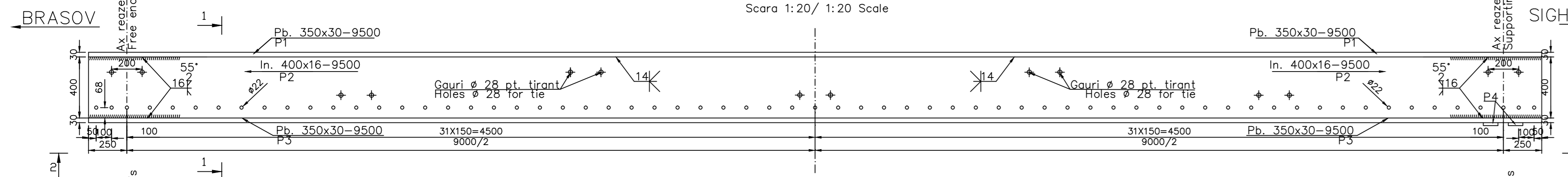


Se interzice copierea, difuzarea, imprumutarea sau utilizarea in alte scopuri, fara permisiunea AREX Lider Company ca proprietar al desenului.  
This drawing is forbidden to be copied, lent or used in other purposes than those previously approved by AREX Lider Company as its owner.

ELEVATIE GRINDA METALICA/ELEVATION OF THE METALLIC GIRDER

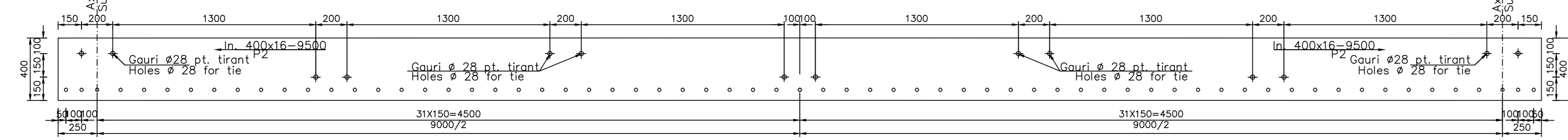


Scara 1:20/ 1:20 Scale

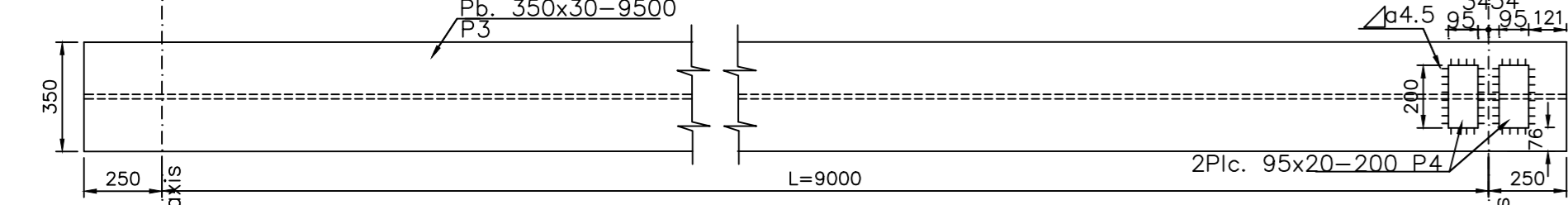
DETALII PENTRU INIMA GRINZII METALICE/DETAILS FOR THE METALLIC GIRDER WEB

(Pozitia gaurilor pentru distantieri si armaturi transversale, marca ① si ② conf. planului de armare)/(Holes position for distance pieces and transversal reinforcements, mark ① and ② according to reinforcement plan)

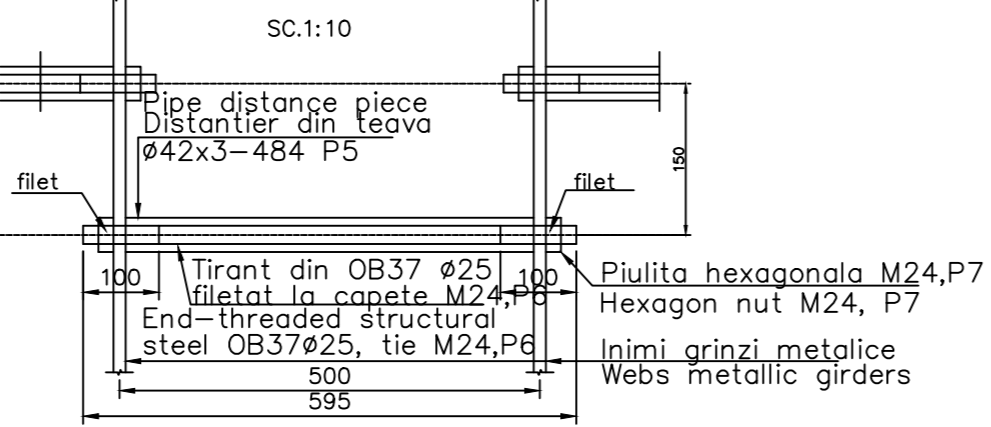
Scara 1:20/ 1:20 Scale



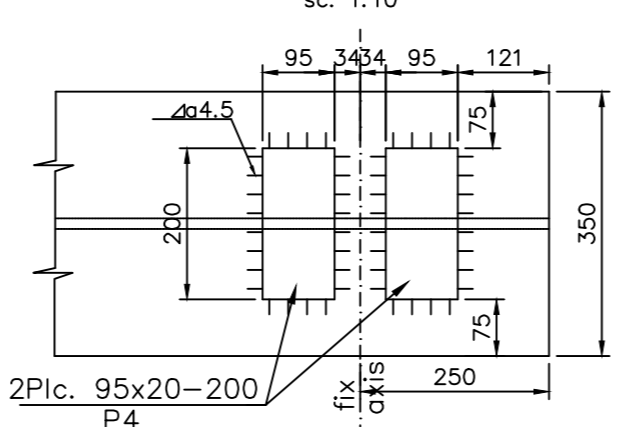
VEDERE 2-2/VIEW 2-2



DETALIU DE PRINDERE A GRINZILOR METALICE  
DETAIL FOR METALLIC GIRDERS FASTENING

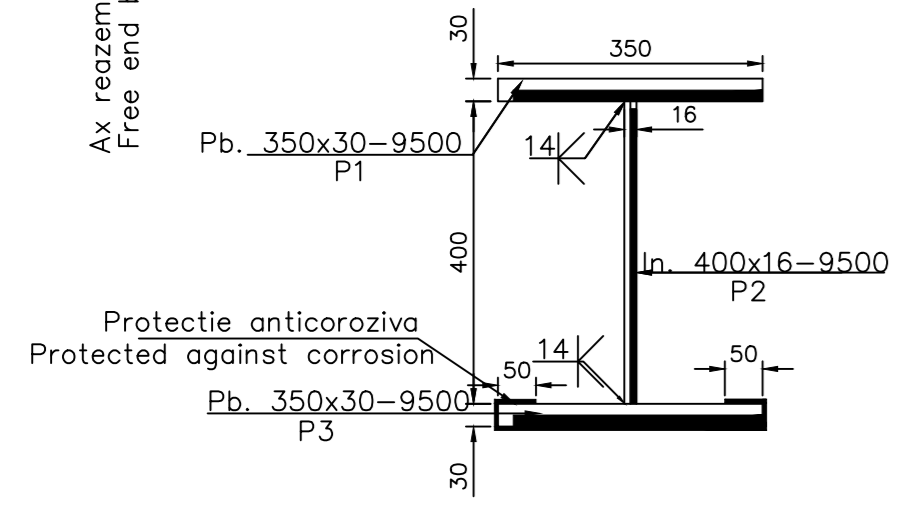


DETALIU DE MONTARE PLACUTE  
DETAIL TO MOUNT THE FIXED BEARING BLOCK PLATES



SECTIUNE 1-1/1-1 SECTION

Scara 1:10/ 1:10 Scale

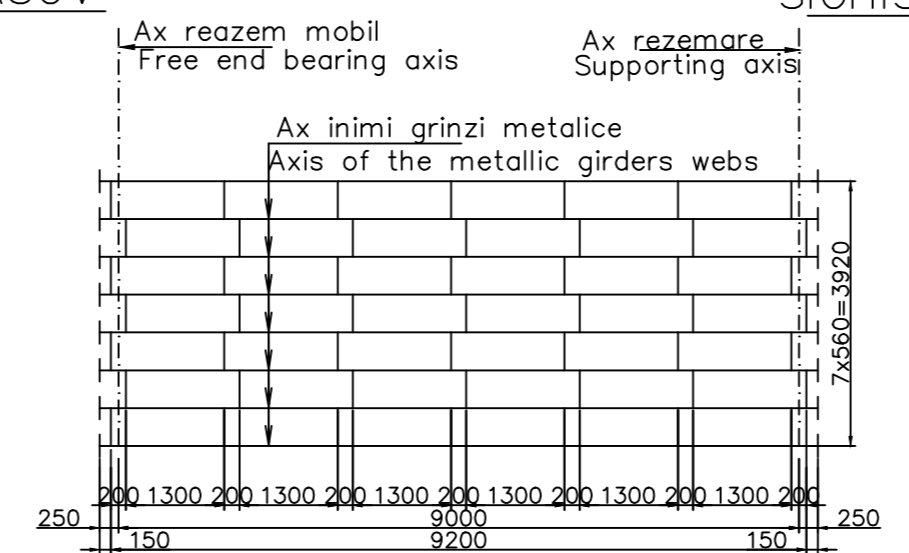


ELEMENTE DE ASAMBLARE  
-Piulita M24 STAS 4971-88 gr.8  
-Saiba STAS 5200/4-91-24-OL 34

ASSEMBLY ELEMENTS  
-Nut M24 STAS 4971-88 gr.8  
-Washer STAS 5200/4-91-24-OL 34

SCHEMA AMPLASARII DISTANTIERILOR  
SKETCH FOR THE DISTANCE PIECES LOCATION

Scara 1:100/ 1:100 Scale



NOTA

- La executia in uzina a grinzilor metalice sudate se vor respecta cu strictete prevederile STAS 9407-75.
- In uzina nu se va aplica decat protectia anticoroziva a talpilor inferioare ale grinzilor metalice.
- Protectia anticoroziva a grinzilor metalice se va face pe suprafata expusa mediului inconjurator, plus 5cm adancime din suprafata inglobata in beton. Protectia anticoroziva se va executa dintr-un strat de baza alcatuit dintr-o pelicula de zinc de 80µm grosime si doua straturi de invelis poliuretanic, fiecare de 85µm. Stratul de baza si un invelis poliuretanic se vor aplica in uzina, urmand ca ultimul strat poliuretanic sa fie aplicat pe santier dupa finalizarea lucrarilor la suprastructura.
- Pregatirea suprafetelor metalice in vederea aplicarii procedeelor de protectie anticoroziva se face prin:
  - Perierea de ruzina cu ajutorul unor perii de sarma.
  - Spalarea suprafetelor metalice.
  - Degresarea cu solventi organici prin stergere sau cu emulsii.
  - Dupa degresare se spala cu jet de apa pentru indepartarea urmelor de detergent. Solutia pentru degresare va fi aleasa astfel incat sa nu afecteze mediul.

NOTE

- The provisions STAS 9407-75 will be strictly observed when the welded metallic girders are manufactured in the factory.
- In the factory, will be applied only the protection against corrosion for low flanges of metallic girders.
- The metallic girders will be protected against corrosion on the surface exposed to the environment, plus 5cm depth of the concrete embedded surface. The protection against corrosion will consist in a primary layer made of a zinc membrane (80µm thickness) and two polyurethane covering layer, each of 85µm thickness. The primary layer and the first polyurethane covering layer will be applied in the factory and the second polyurethane layer will be applied on site, after completing the superstructure works.
- Preparing the metallic surfaces in order to apply the corrosion-proof procedures shall be made by:
  - Rust removal using wire brushes.
  - Washing the metallic surfaces.
  - Organic solvent degreasing by wiping or using emulsions.
  - After degreasing, the surface is washed by water jet to eliminate the detergent stains. The solution selected for degreasing shall not affect the environment.

EXTRAS DE MATERIAL PENTRU O GRINDA METALICA OL37-EP  
MEASURING MATERIAL FOR ONE METALLIC GIRDERS OL37-EP

Poz.	Denumire	Dimensiuni	Nr. buc. asemenea	Greutate OL 37 EP		
				kg/ml	kg/buc.	Total(kg)
P1	Pb. superioara	350x30-9500	1	82.425	783.040	783.040
P2	Inima	400x16-9500	1	50.240	477.280	477.280
P3	Pb. inferioara	350x30-9500	1	82.425	783.040	783.040
P4	Placute ap.fix	95x20-200	2	14.915	2.983	6.00
Total partial						2049,36
Spor 3% pt. sudura						61,50
Total pt. 1buc. grinda						2111,00

TOTAL PENTRU UN TABLIER: 8 grinzi x 2111kg=16888kg  
TOTAL PENTRU 2 TABLIERE: 2 x 8 grinzi x 2111kg=33776kg  
TOTAL FOR 1 DECK: 8 girders x 2111kg=16888kg  
TOTAL FOR 2 DECKS: 2 x 8 girders x 2111kg=33776kg

EXTRAS DE MATERIAL PENTRU SOLIDARIZAREA GRINZILOR METALICE  
TABLE OF MATERIALS TO JOIN THE METALLIC GIRDERS FOR SINGLE TRACK RAILWAY BRIDGE DECK

Poz.	Denumire	Dimensiuni	Nr. buc. asemenea	Greutate OL 37 EP		
				kg/ml	kg/buc.	Total(kg)
P5	Distantier teava	Ø42x3-484	49	2.88	1.40	69.00
P6	Tirant OB 37	Ø25, L=595	49	3.85	2.29	113.00
P7	Piulite	M24	98	-	0.10	10.00
P8	Saibe	M24	98	-	0.023	2.50
Total (kg)						195.00

TOTAL POD (2 TABLIERE): 2 x 195kg=390kg  
TOTAL BRIDGE (2 DECKS): 2 x 195kg=390kg

D					
C					
B					
A	12.2011	Revizia 1 1 Revision	Dinu Andreea		
Index	Data Date	Modificare Modification/Revision	Proiectant Designer	Aprobat Consultant Approved Consultant	Aprobat CFR Approved CFR

GUVERNUL ROMANIEI  
ROMANIAN GOVERNMENT

PROIECT FINANȚAT DE UNIUNEA EUROPEANĂ  
EUROPEAN UNION FINANCED PROJECT

CFR

C.N.C.F. "C.F.R." - S.A.

CLIENT / CLIENT

ITALFERRA GRUPPO FERROVIE DELLO STATO  
Joint Venture leader

Scot Wilson

OBERMEYER PLANEN + BERATEN GmbH

TECNIC Consulting Engineers

CONSULTANT / CONSULTANT			Data Date	Semnătură Signature
Aprobat Approved	Şef proiect Project manager	R. Liuzza		
Aprobat Approved	Coordonator Secțiune 1 Section 1 Coordinator	C. Gambelli		
Verificat Checked	Expert Cheie Checking Expert	V. Kallidromitis		

SUBCONTRACTANT / SUBCONTRACTOR				
Aprobat Approved	Responsabil Subcontractant Subcontractant Responsible	A. Dinulescu Stanciu	07.2011	
Intocmit Elaborated	Proiectant Designer	Dinu Andreea	07.2011	

Reabilitarea liniei de cale ferata Braşov - Simeria, parte componentă a coridorului IV Pan European, pentru circulația trenurilor cu viteză maximă de 160 km/h,  
Tronsonul : Braşov - Sighişoara  
Rehabilitation of the railway line Braşov - Simeria, component Part of the IV Pan-European Corridor, for the trains circulation with maximum speed of 160 km/h,  
Section : Braşov - Sighişoara

Denumire desen / Drawing Title : Interval Archita - Vanatori  
POD Km. 273+693.416 L=9.00m/ PLAN GRINZI METALICE  
BRIDGE Km. 273+693.416 L=9.00m/METALLIC GIRDERS PLANS

Codificare / Codification System	Scara / Scale 1:20;1:10;1:100	LOT / LOT	Nr. / No 01 / 01
----------------------------------	----------------------------------	-----------	---------------------

E A 5 1 0 1 E 1 8 B C P V 0 4 2 3 0 0 7 1