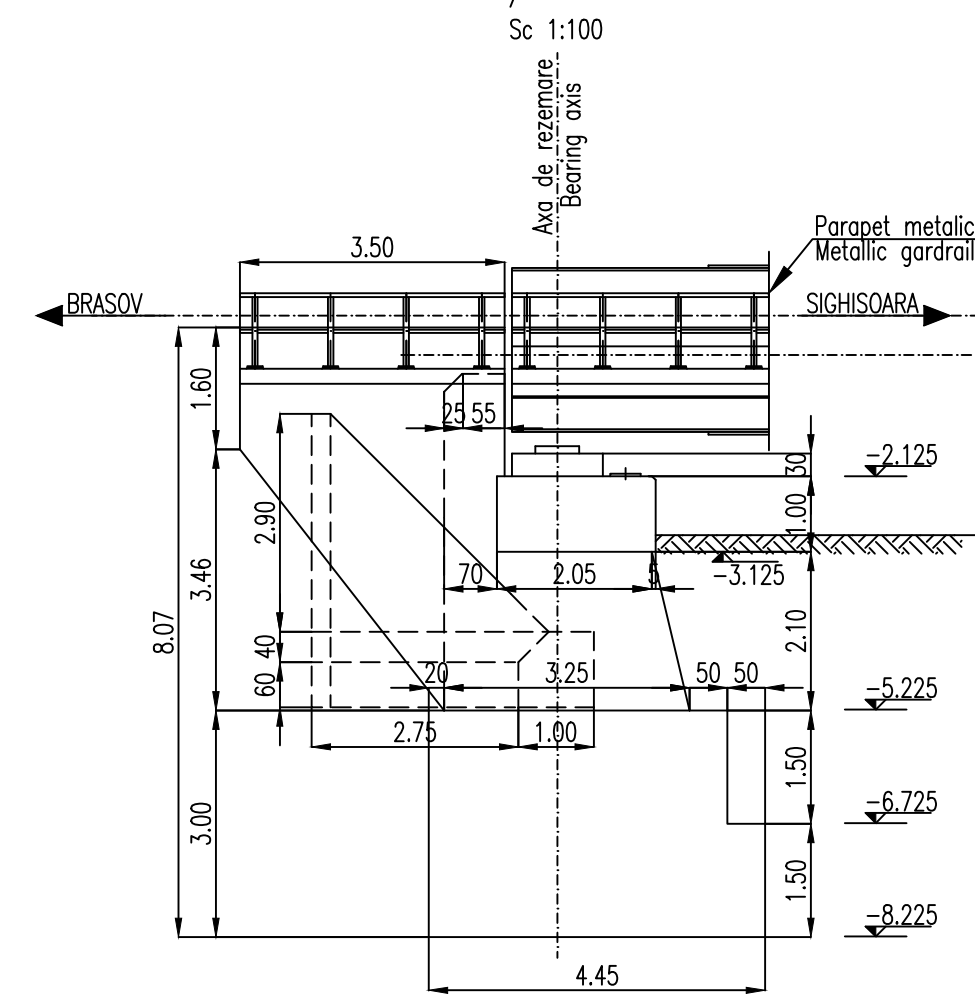
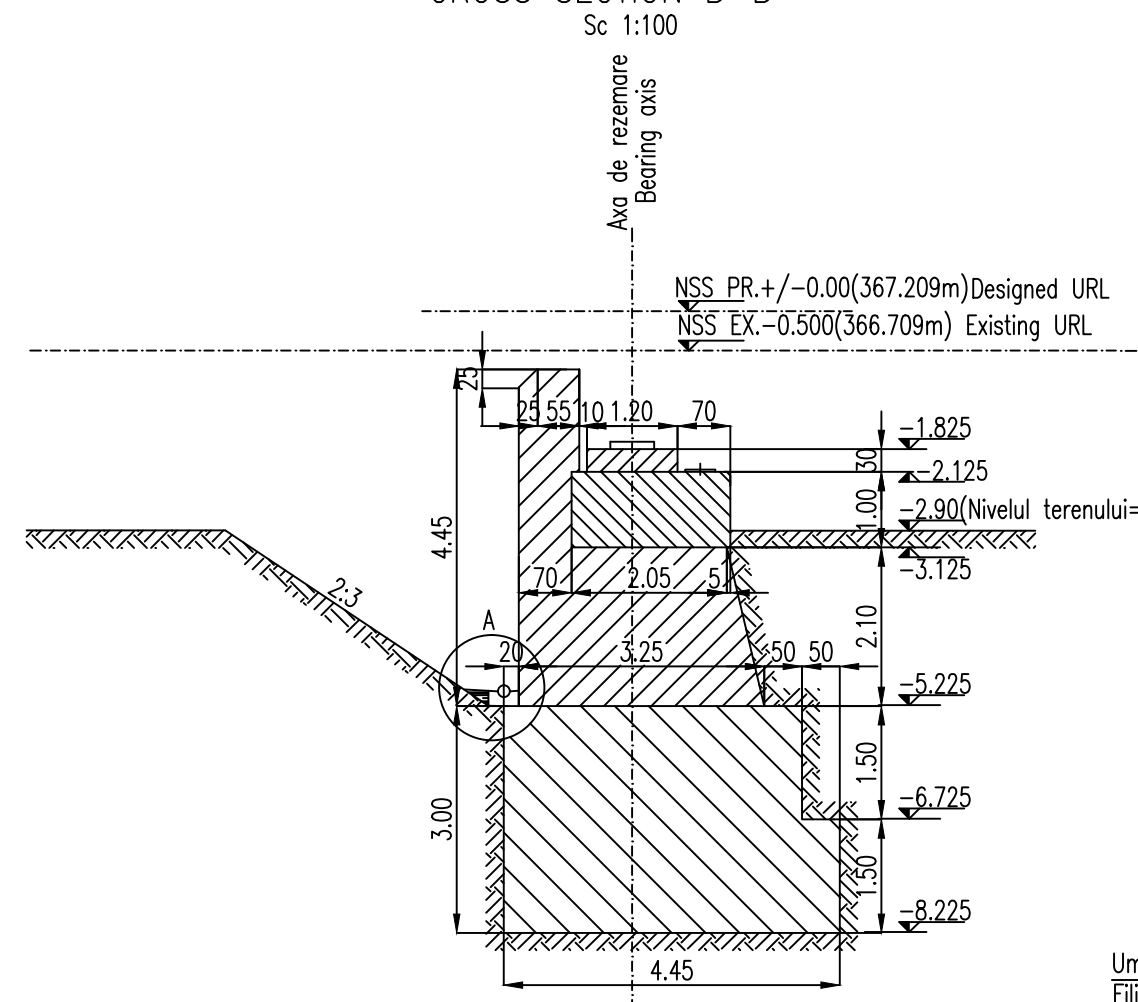


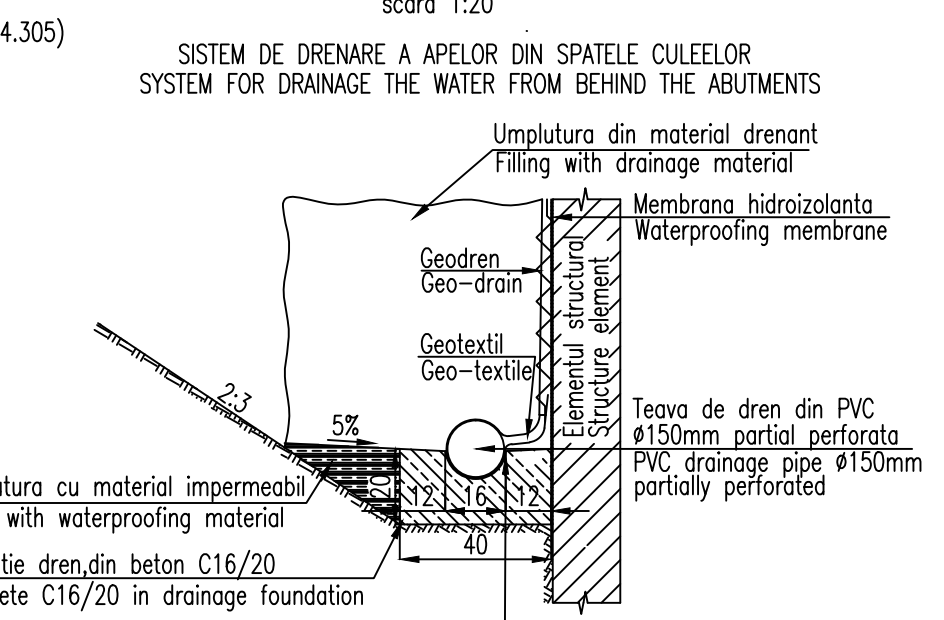
ELEVATIE A-A / ELEVATION A-A



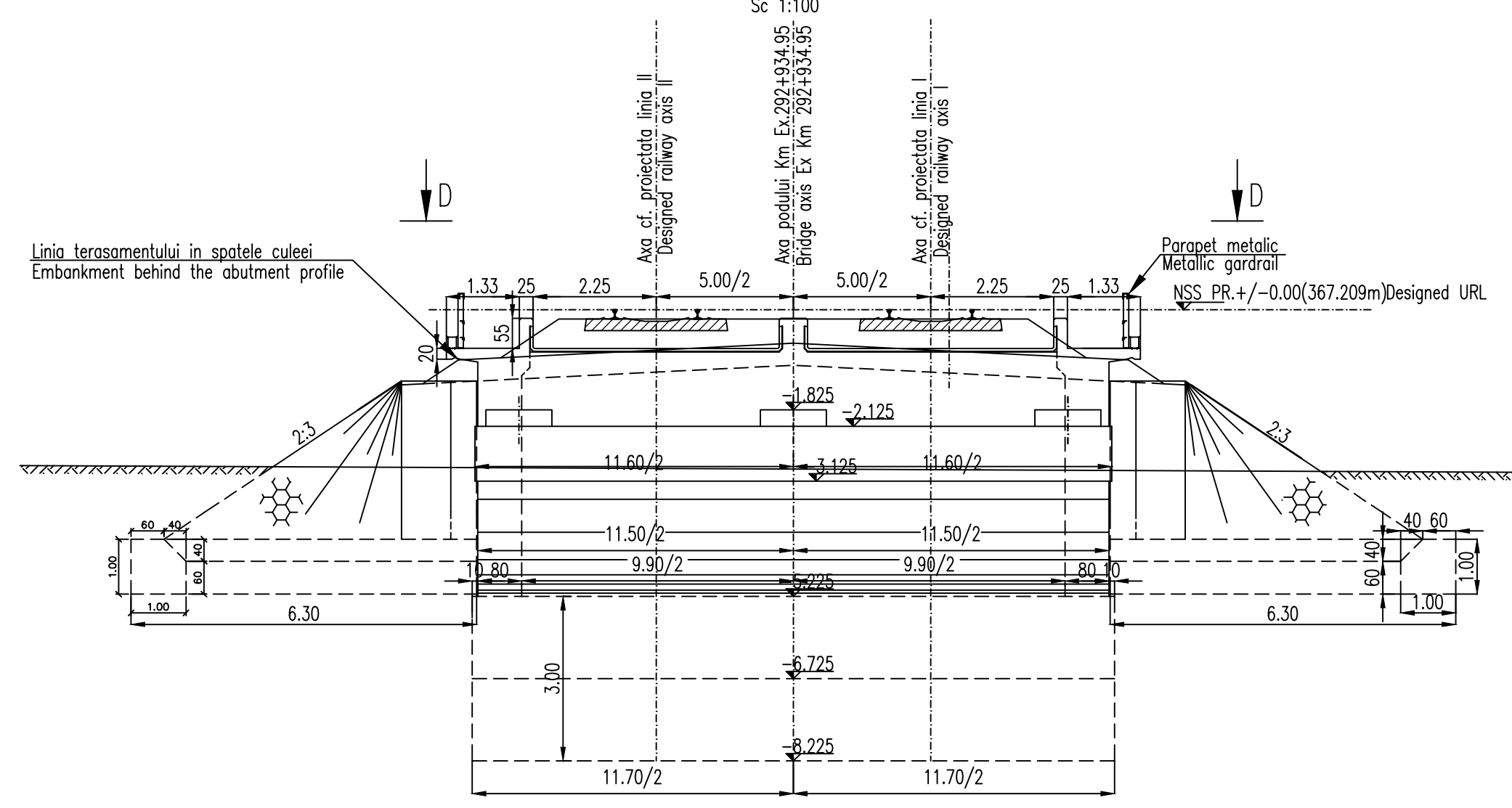
SECTIUNE TRANSVERSALA B-B / CROSS SECTION B-B



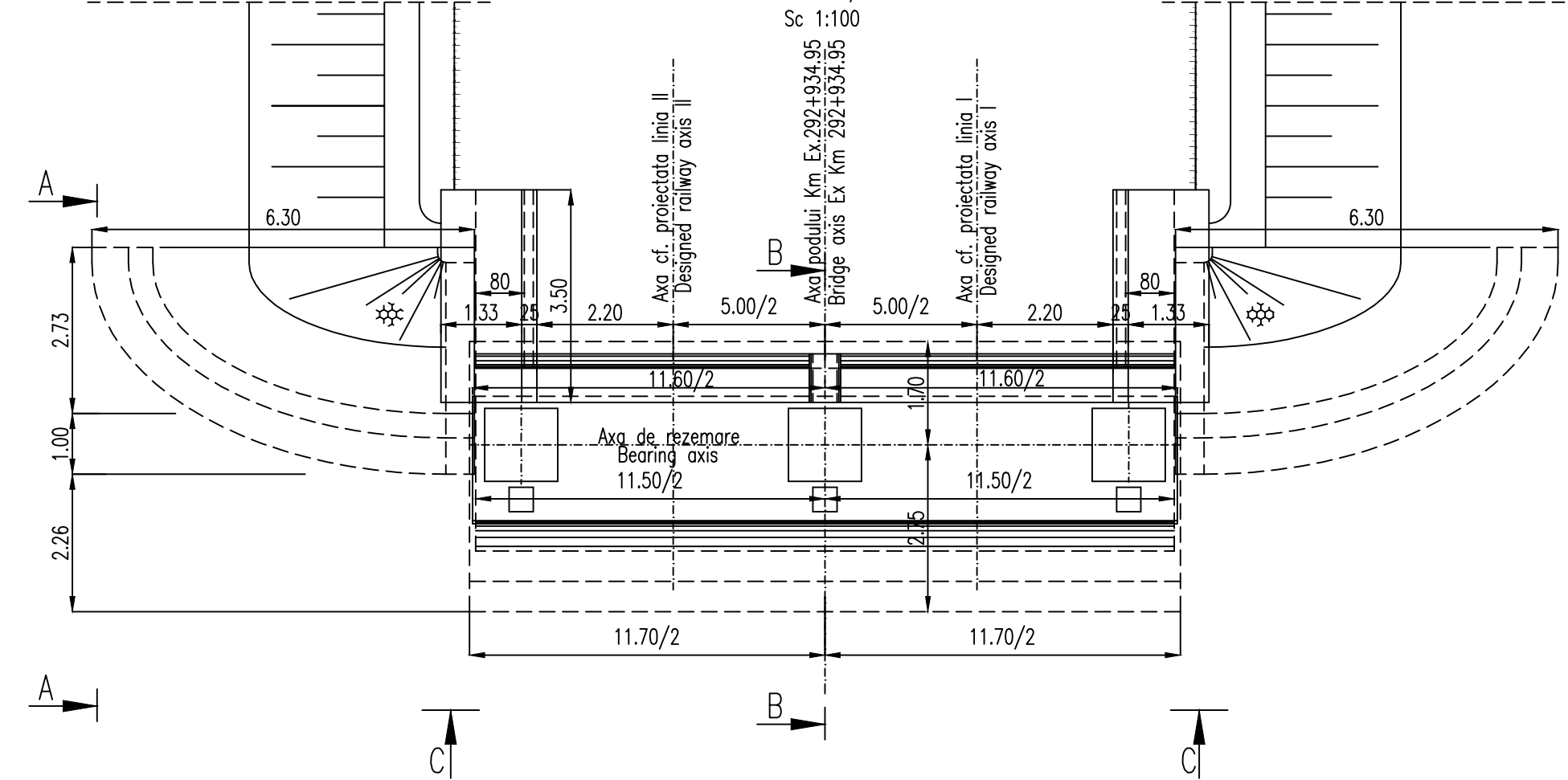
DETALIU "A" / DETAIL "A"



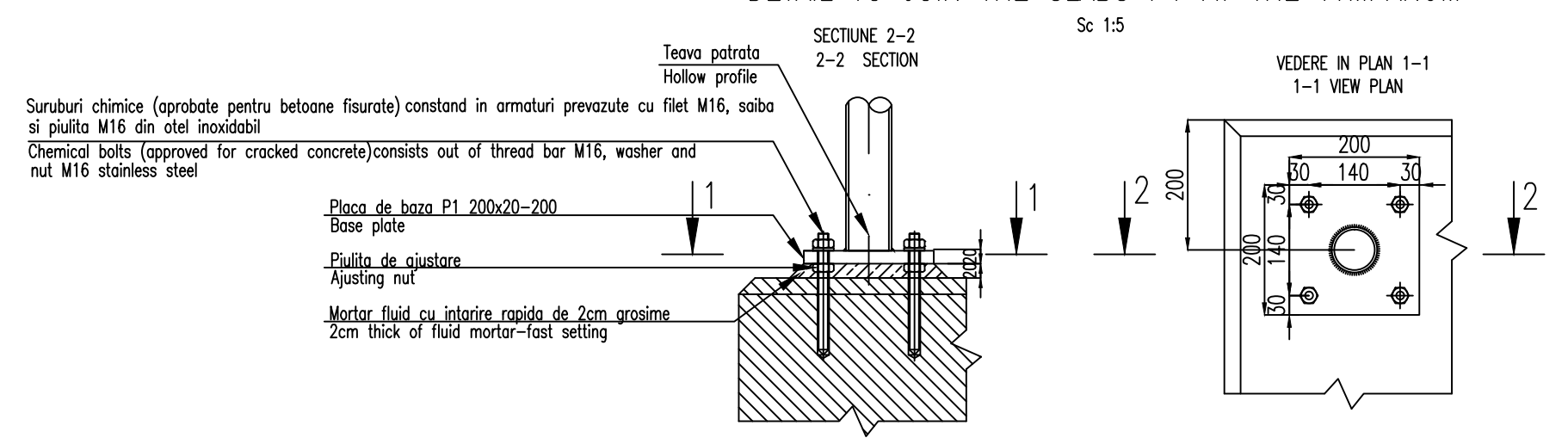
VEDERE C-C / VIEW C-C



VEDERE IN PLAN D-D / PLAN VIEW D-D



DETALIU PENTRU PRINDEREA PLACUTELOR P1 DE TIMPAN / DETAIL TO JOIN THE SLABS P1 AT THE TYMPANUM



LEGENDA BETOANELOR/CONCRETE LIST

- Beton armat in bancheta cuzinetelor / Reinforced concrete in the cushions and cushions bench
- Beton armat in elevatie si in zidurile intoarse / Reinforced concrete in the elevation infrastructure and reverted walls
- Beton simplu in fundatii / Plain concrete in abutments foundations
- Beton in stratul de protectie al hidroizolatiei / Concrete in the protection layer of the waterproofing

In cazul in care temperatura in timpul turnarii este scazuta, se vor folosi cimenturile cu rezistenta initiala mare, R si aditivi acceleratori, iar in cazul turnarii pe timp cald, cimenturile cu rezistenta initiala uzuala, N si aditivi intarzierii (conf.NE 012/2-2010 si tabelului 2 din SR EN 197-1:2002).
When the temperature during the casting is low, cements with high initial resistance, R and accelerating additives shall be used and when it is cast during warm weather, cements with common initial resistance, N and delaying additives shall be used (according the norm NE 012/2-2010 and table 2 for the SR EN 197-1: 002).

Se interzice copierea, difuzarea, imprumutarea sau utilizarea in alte scopuri, fara permisiunea ALEX LIDER COMPANY ca proprietar al desenului.
This drawing is forbidden to be copied, lent or used in other purposes than those previously approved by ALEX LIDER COMPANY as its owner.

D					
C					
B					
A	12.2011	Revizia 1 1 Revision	Secu Andrei Razvan		
Indice Index	Data Date	Modificare Modification/Revision	Proiectant Designer	Aprobat Consultant Approved Consultant	Aprobat CFR Approved CFR

GUVERNUL ROMANIEI / ROMANIAN GOVERNMENT
PROIECT FINANȚAT DE UNIUNEA EUROPEANĂ / EUROPEAN UNION FINANCED PROJECT

CFR
C.N.C.F. "C.F.R." - S.A.

CLIENT / CLIENT
ITALFER, Scott Wilson, OBERMEYER, TECNIC

CONSULTANT / CONSULTANT			Data	Semnatura
Aprobat	Sef proiect	R. Liuzza		
Aprobat	Coordonator Sectiune 1	C. Gambelli		
Verificat	Expert Cheie	V.Kallidromitis		

SUBCONTRACTANT / SUBCONTRACTOR			Data	Semnatura
Aprobat	Responsabil Subcontractant	A. Dinulescu Stanciu	09.2011	
Intocmit	Proiectant	Secu Andrei Razvan	09.2011	

Reabilitarea liniei de cale ferata Braşov - Simeria, parte componentă a coridorului IV Pan European, pentru circulația trenurilor cu viteză maximă de 160 km/h,
Tronsonul : Braşov - Sighişoara
Rehabilitation of the railway line Braşov - Simeria, component Part of the IV Pan-European Corridor, for the trains circulation with maximum speed of 160 km/h,
Section : Braşov - Sighişoara

Denumire desen / Drawing Title :
Statia Albesti
Pod Km 276+375.754 existent - PLAN COFRAJ CULEI
Bridge existing Km 276+375.754 - ABUMENTS FORMWORK PLANE

Codificare / Codification System	Scara / Scale 1:100 1:20 1:5	LOT / LOT	Nr. / No 01 / 01
----------------------------------	---------------------------------	-----------	---------------------

E A 5 1 0 1 E 1 9 B B P V 0 4 3 2 0 0 4 1

ATENȚIE / ATTENTION

Aprovizionarea aparatelor de rezem se va face inaintea executarii cuzinetilor si a banchetii acestora. In cazul in care inaltimea aparatelor de rezem aprovisionate difera fata de cea considerata in proiect se vor modifica inaltimea pe rezem corespunzator cu noile aparate.
The bearing blocks shall be supplied before building the bearings and their seats. In case the height of the supplied bearing blocks differs from that given in the project, the heights on the seats shall be adjusted so as to comply with the new devices.

- 2** NOTA
- Prezentul plan s-a intocmit in conformitate cu dispozitia generala.
Executia partilor superioare ale cuzinetilor, amplasate deasupra banchetii cuzinetilor, se va face numai dupa procurarea aparatelor de rezem.
Nivelele superioare ale cuzinetilor se vor stabili dupa procurarea aparatelor de rezem, in functie de inaltimea fiecarui tip de aparat.
Executia zidurilor inoarse si a zidului de garda se va face dupa azesarea tablierului pe rezeme.
3. La executie se vor respecta cu strictete prevederile din "Normativ pentru producerea betonului", indicativ CP 012/1-2007 si "Normativ pentru producerea betonului si executarea lucrarilor din beton, beton armat si beton precomprimat. Partea 2: Executarea lucrarilor din beton", indicativ NE 012/2-2010, iar verificarea calitatii lucrarilor si receptionarea lor se va face conform normativului C56-1985.
4. Constructia se incadreaza in categoria B de importanta. Constructii de importanta deosebita, modulul 1 de asigurare a calitatii conform HG 766/97.
Podul corespunde la convoiile de calcul UIC (LM71 si SW/2).

- NOTE:**
- This plan has been drawn up according to the general layout.
 - The upper parts of the bearing placed over the bearing seat shall be built only after the procurement of the bearing blocks. The upper level of the bearings shall be established after the procurement of the bearing blocks depending on the height of the each bearing block type. The reverted walls and the guard wall shall be carried out after putting the desk on the supports.
 - The execution will strictly comply with the provisions of "Practice code for concrete production CP 012/1-2007 and "Practice code for the concrete production and works execution, reinforced and pre-stressed concrete - Part 2: The execution of concrete works." NE 012/2-2010, and the quality and the reception of the works shall be made according to Norm C 56-1985.
 - The construction is classified in the B category of importance. Special importance constructions, model 1 for quality ensuring according to HG 766/97.
 - Bridge conveys calculation corresponds to UIC (LM71 and SW/2).