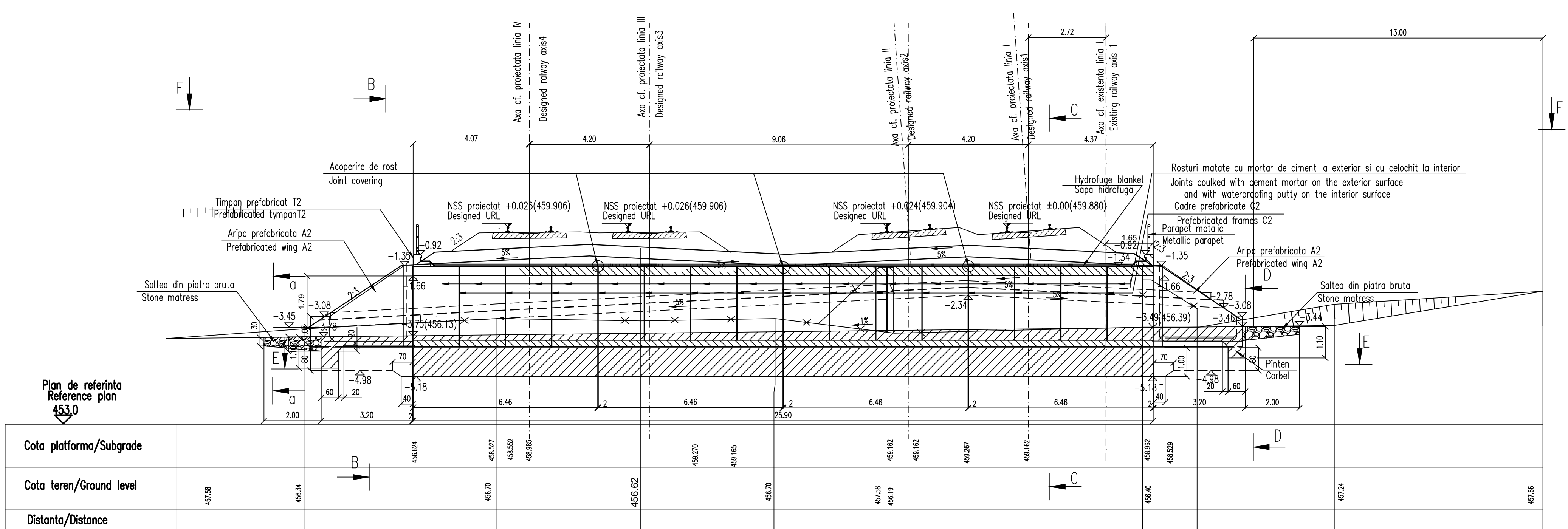
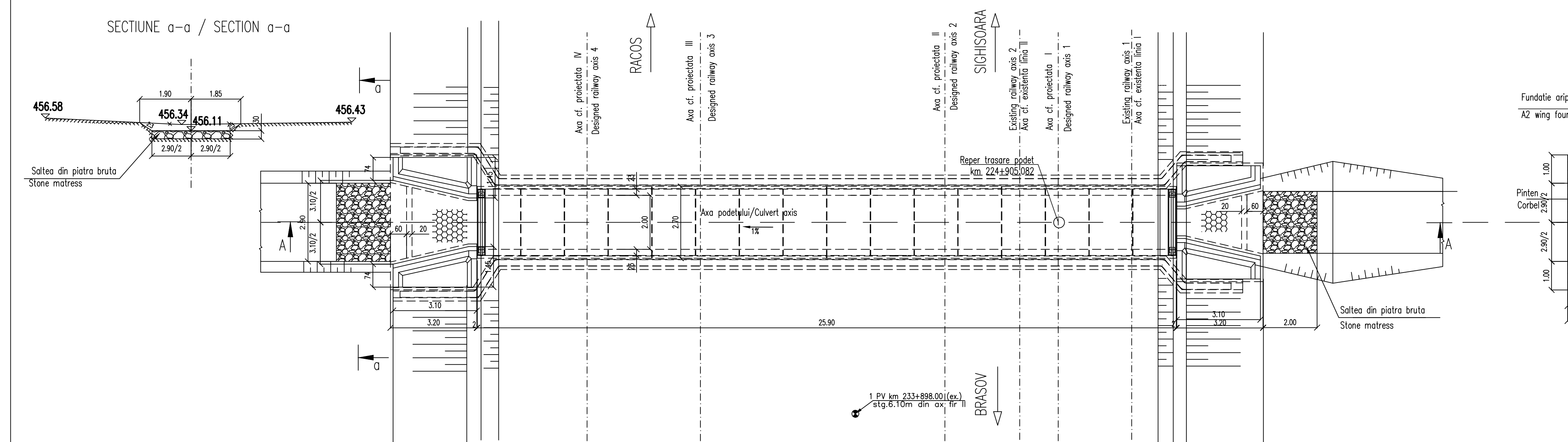


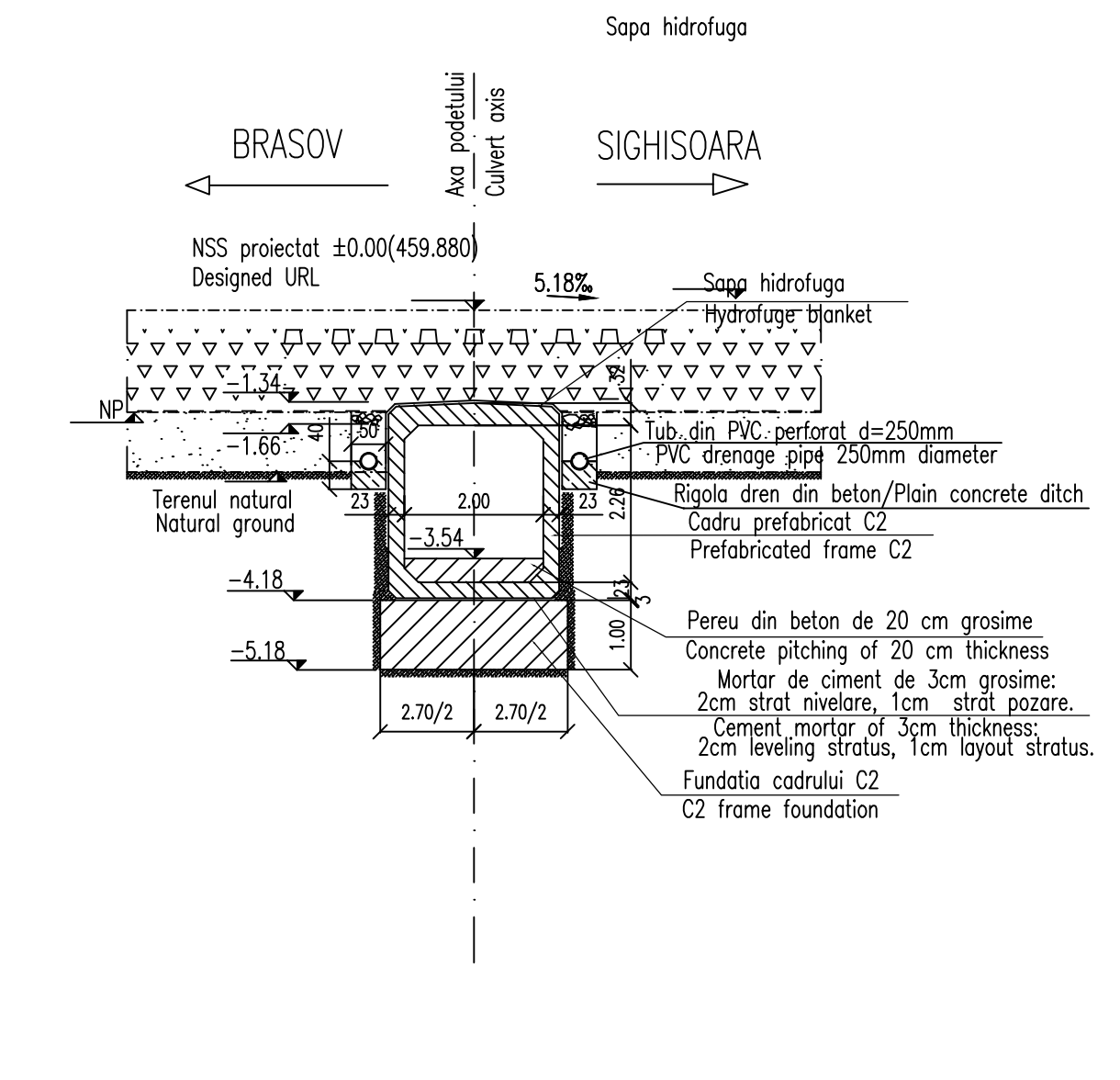
SECTIUNE LONGITUDINALA A-A / LONGITUDINAL SECTION A-A



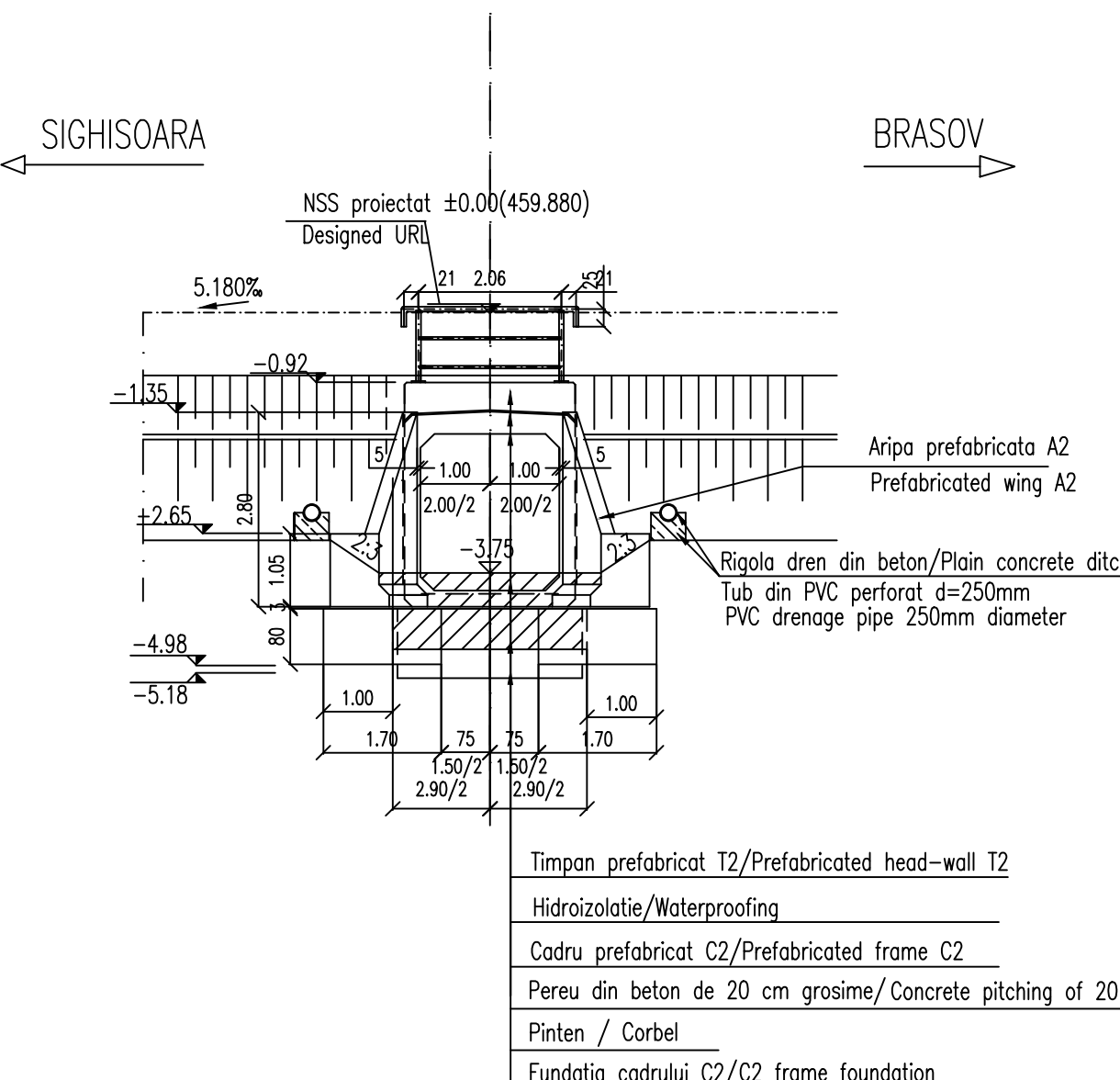
VEDERE IN PLAN-F/PLAN VIEW F-F



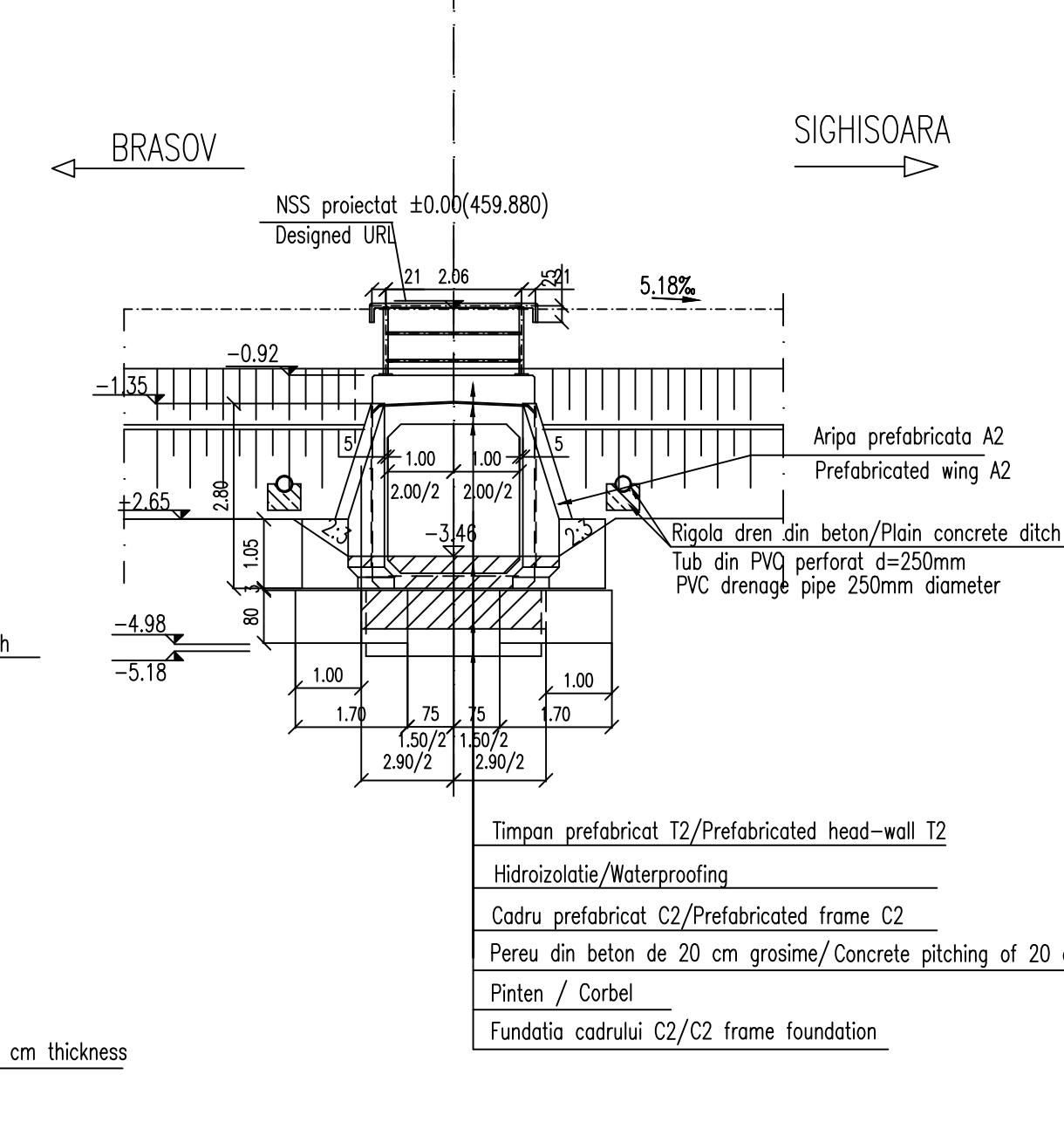
SECTIUNE TRANSVERSALA C-C / CROSS SECTION C-C



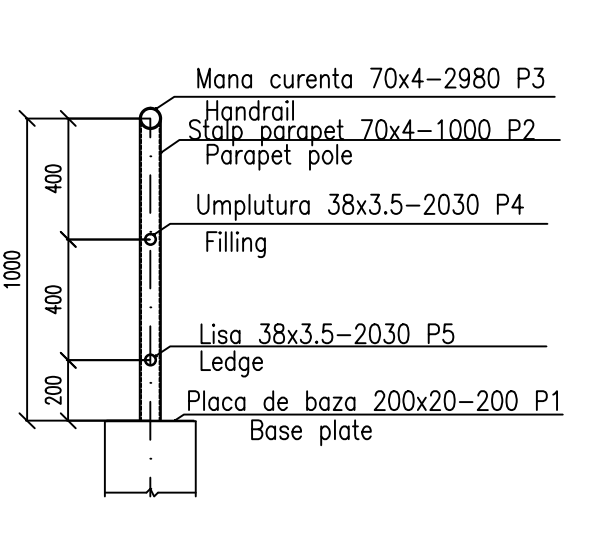
VEDERE DIN AVAL B-B / DOWNSTREAM VIEW B-B



VEDERE DIN AVAL B-B / DOWNSTREAM VIEW B-B



DETALIU PARAPET / DETAIL PARAPET



Se interzice copierea, difuzarea, imprimarea sau utilizarea in alte scopuri fara permisiunea AREX LIDER COMPANY ca proprietar al desenului. This drawing is forbidden to be copied, lent or user in other purposes, than those previously approved by AREX LIDER COMPANY as owner.

Sondaj Nr.: 1Pv03 / Drill Nr.: 1Pv03

NSS proiectat ±0.00 (459.880) / URL designt

Argila nisipoasa, cafenie, plastic vartoasa; de la 2.50m: plastic consistenta. Sandy clay, brown, stout from 2.50: plastic consistency.

Nisip mare galben, saturat, cu indesare medie. Large yellow sand, saturated, with average tamping.

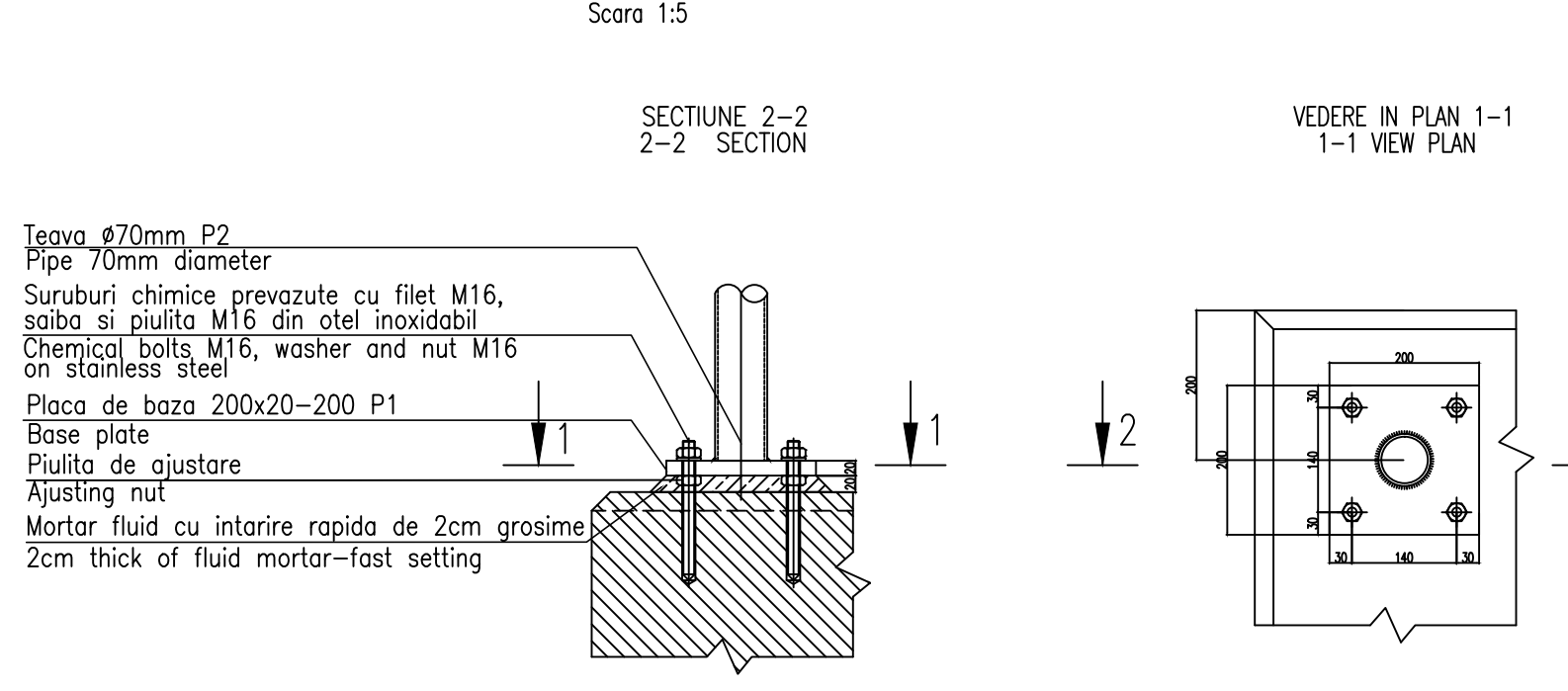
LEGENDA BETOANELOR UTILIZATE LA PODET / LEGEND OF CONCRETES USED FOR CULVERT

- Beton in elementele prefabricate in general (cadre, aripi, timpane) Concrete for prefabricated elements generally (frames, wings, timpane)
- Beton simplu in fundatiile podetului, a elementelor de racordare (aripi), in pinte, percu Concrete for the foundation of culvert, of connecting elements (wings), in breakwaters, revetment
- Beton in stratul de protectie a hidroizolatiei Concrete for waterproofing protection layer

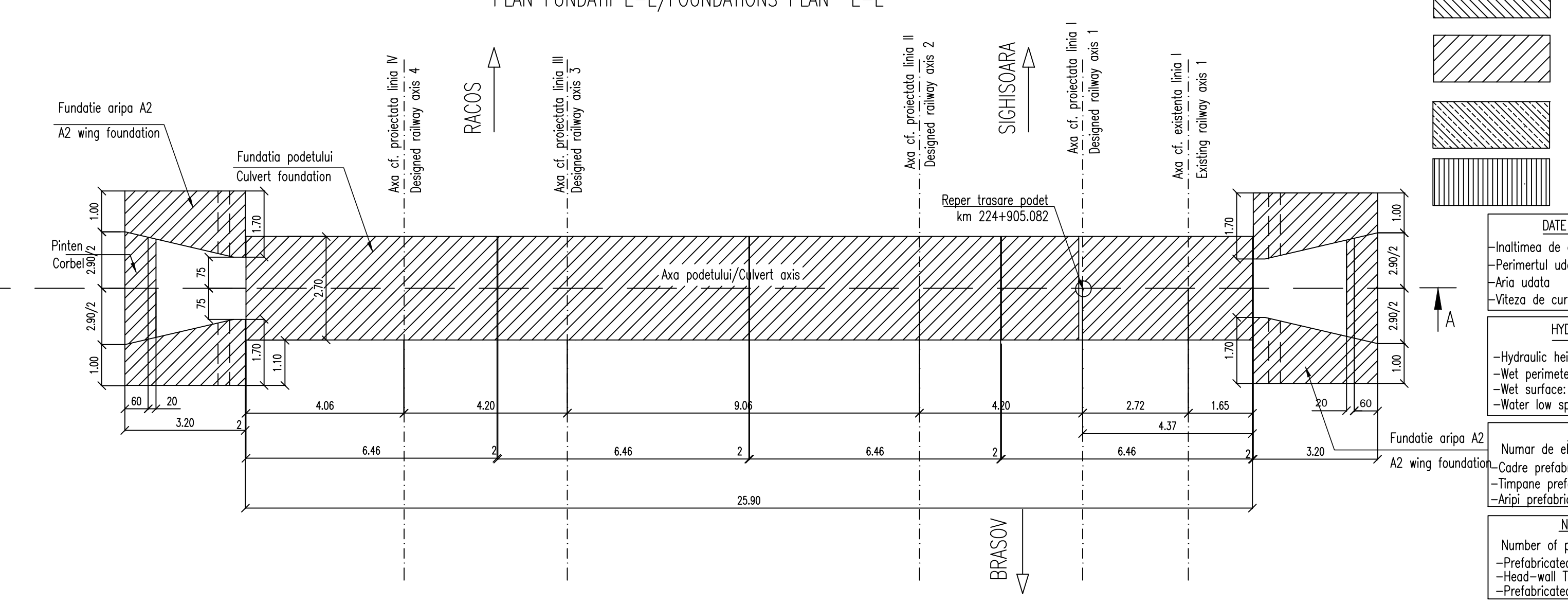
MATERIAL METALIC PENTRU CONFECTIONAREA PARAPETULUI / THE METALLIC MATERIAL TO BUILD PARAPET OF CULVERT

Pos. / Piece	Denumirea materialului / The denomination of the material	Buc.	Sectione / Section	Lung. / Long. (mm)	kg/ml	kg/buc	kg
P1	Placuta prindere / Clamping plate	4	200x20	200	31.40	6.28	25.12
P2	Stap parapet EN 10297 - E275	4	70x4	970	6.51	6.32	25.26
P3	Mano curenta EN 10297 - E275	2	70x4	2900	6.51	18.88	37.76
P4	Umplutura EN 10058	2	38x3.5	1980	2.98	5.90	11.80
P5	Lisa EN 10058	2	38x3.5	1980	2.98	5.90	11.80
Total part							111.74
Sudura 2X / Welding 2x							2.24
TOTAL kg							115

DETALIU PENTRU PRINDEREA PLACUTELOR P1 DE TIMPAN / DETAIL TO JOIN THE SLABS P1 AT THE HEAD-WALL



PLAN FUNDATII E-E / FOUNDATIONS PLAN E-E



NOTA:

- Prezentul plan s-a intocmit pe baza urmatoarelor date: - plan de situatie - profil in lung - profil transversal - fia podului - date culuse pe teren
- Podetul corespunde la convoaiole de calcul UIC (LM71 si SW/2)
- La executie se vor respecta cu strictete prevederile din "Normativ pentru producerea betonului si executarea lucrarilor din beton, beton armat si beton precomprimat. Partea 1: Producerea betonului", indicativ NE 012/1-2007 si "Normativ pentru producerea betonului si executarea lucrarilor din beton, beton armat si beton precomprimat. Partea 2: Executarea lucrarilor din beton", indicativ NE 012/2-2010, iar verificarea calitatii lucrarilor si receptiunea lor se va face conform normativului C56-1985.
- Daca la executie se vor constata neconcordante intre situatia existenta pe teren si cea din proiect se va anunta proiectantul.
- Construcția se încadrează în categoria de importanță B (construcții de importanță deosebită), modelul 1 de asigurare a calitatii și clasa de importanță B, conform HG 766/1997.
- Proiectul va fi verificat la exigentele A4.2; B2.2; D2.2.
- Se atrage în mod deosebit atenția asupra obligativității rezemării elevatelor prefabricate pe blocul de fundație prin intermediul unui strat de mortar de ciment pentru a se realiza un contact perfect pe toata suprafața între placa prefabricată și fundație. Se interzice rețeaua directă fără strat de mortar de ciment.

NOTE:

- This plan has been drawn up based on the following data: - Lay-out Plan - Longitudinal Profile - Cross-section Profile - Bridge's File - Hydraulic determination - Field Data
- The culvert corresponds to the UIC determination convoys (LM71 and SW/2).
- The execution will strictly comply with the provisions of "Practice code for the concrete production and works execution, reinforced and pre-stressed concrete - Part 1: Practice code for concrete production" NE 012/1-2007 and "Practice code for the concrete production and works execution, reinforced and pre-stressed concrete - Part 2: The execution of concrete works." NE 012/2-2010, and the quality and the reception of the works shall be made accordingly to Norm C 56-1985.
- If during the execution, discrepancies are found between the existing situation on site and the situation stated in the project, the designer will be notified.
- The construction has been classified in B category of importance (high importance construction), model 1 - ensuring the quality and class of importance B according to G.O. 766/97.
- The project will be checked in order to comply with the A4.2; B2.2; D2.2 requirements.
- Particular attention is drawn on binding prefabricated elevations settlement on block foundation through a layer of cement mortar to achieve a perfect contact over the entire surface between precast and foundation base. Proping is prohibited without direct layer of cement mortar.

Indice / Index	Data / Date	Modificari / Modifications	Proiectant / Designer	Approbat / Approved	Consultant / Consultant
A	12.2011	Revizua 1 / Revision 1	Adrian Sabo	Approbat / Approved	Consultant / Consultant
B				Approbat / Approved	CFR / CFR



GUVERNUL ROMANIEI / ROMANIAN GOVERNMENT

PROIECT FINAN AT DE UNIUNEA EUROPEAN / EUROPEAN UNION FINANCED PROJECT



C.N.C.F. "C.F.R." - S.A.

CLIENT / CLIENT



CONSULTANT / CONSULTANT

Approbat / Approved	Data / Date	Semn. tur / Signature
Approbat / Approved		R. Liuzza
Approbat / Approved		C. Gambelli
Verificat / Checked		V. Kallidromitis

SUBCONTRACTANT / SUBCONTRACTOR

Approbat / Approved	Data / Date	Semn. tur / Signature
Approbat / Approved	07.2011	
Elaborat / Elaborated	07.2011	

Reabilitarea liniei de cale ferata / Rehabilitation of the railway line

Rehabilitation of the railway line Brasov - Simeria, important Part of the IV Pan-European Corridor, for the trains circulation with maximum speed of 160 km/h, Section : Brasov - Sighisoara

Denumire desen / Drawing Title :

INTERVAL / SECTION RACOS - CATA

PODET km 224+905.082 / DISPOZITIE GENERALA CULVERT km 224+905.082 / GENERAL LAYOUT

Codificare / Codification System

Scara / Scale	LOT / LOT	Nr. / No
1:100		01 / 01

EA51	01	C	12	PA	PO	03	5	1	002	1
------	----	---	----	----	----	----	---	---	-----	---