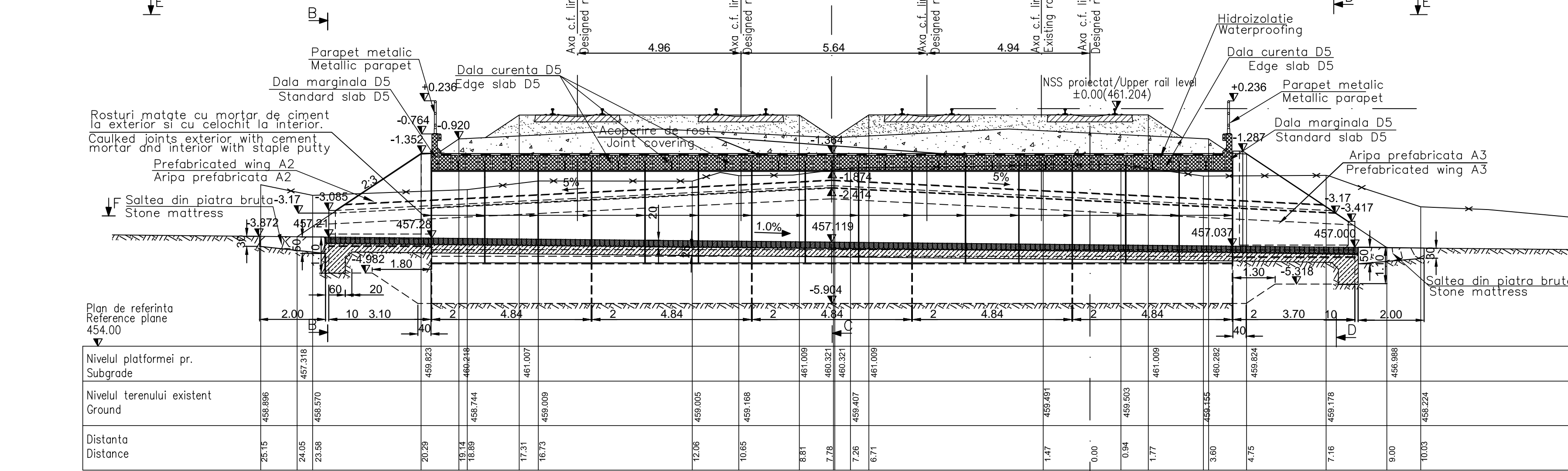


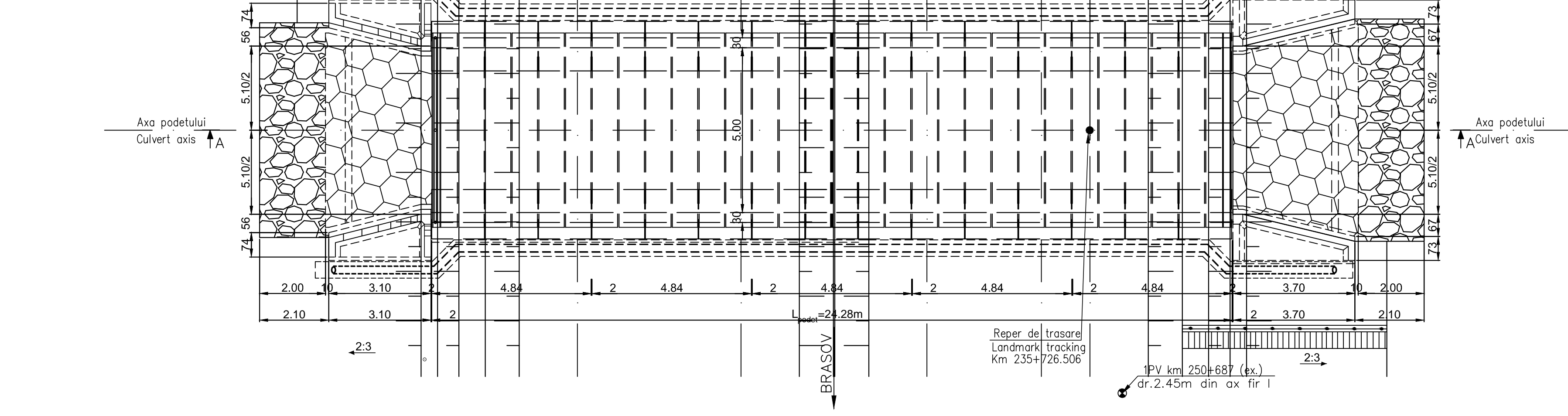
**DATE HIDRAULICE:**  
 -Inaltimea de apa in podet: h=1.22m  
 -Perimetrul udat: P=7.44m  
 -Aria udata: A=6.10m<sup>2</sup>  
 -Viteza de curgere a apei V=3.46m/s

**HIDRAULIC DATA:**  
 -Hydraulic height: h=1.22m  
 -Perimeter: P=7.44m  
 -surface: A=6.10m<sup>2</sup>  
 -Water flow speed: V=3.46m/s



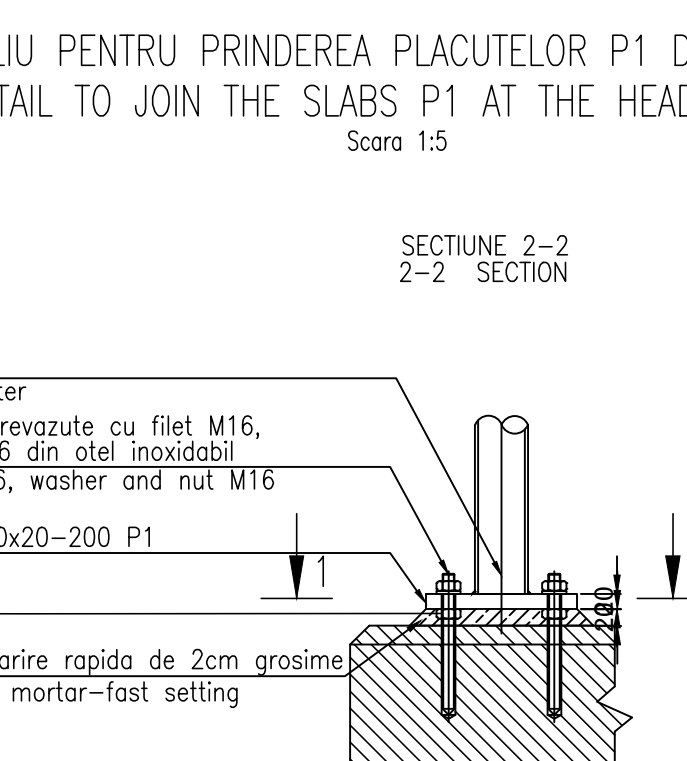
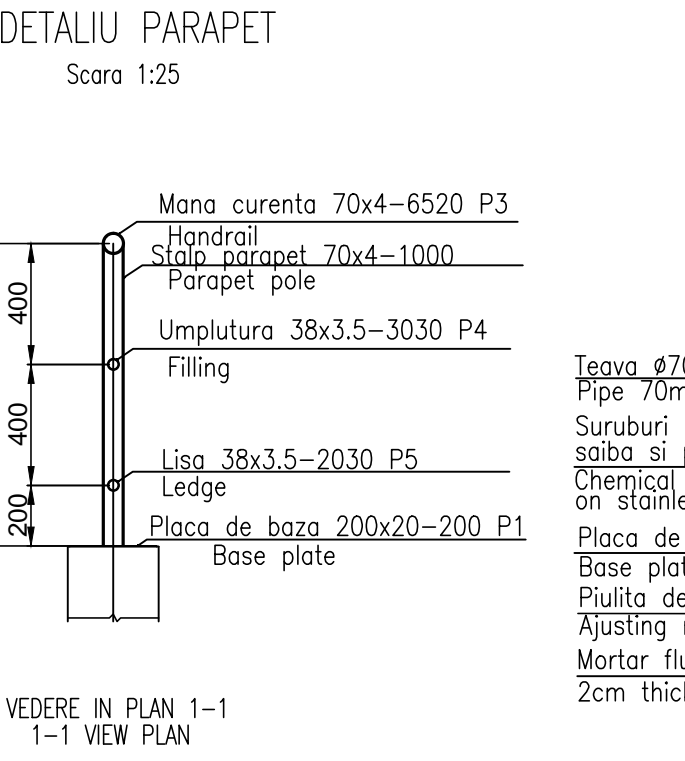
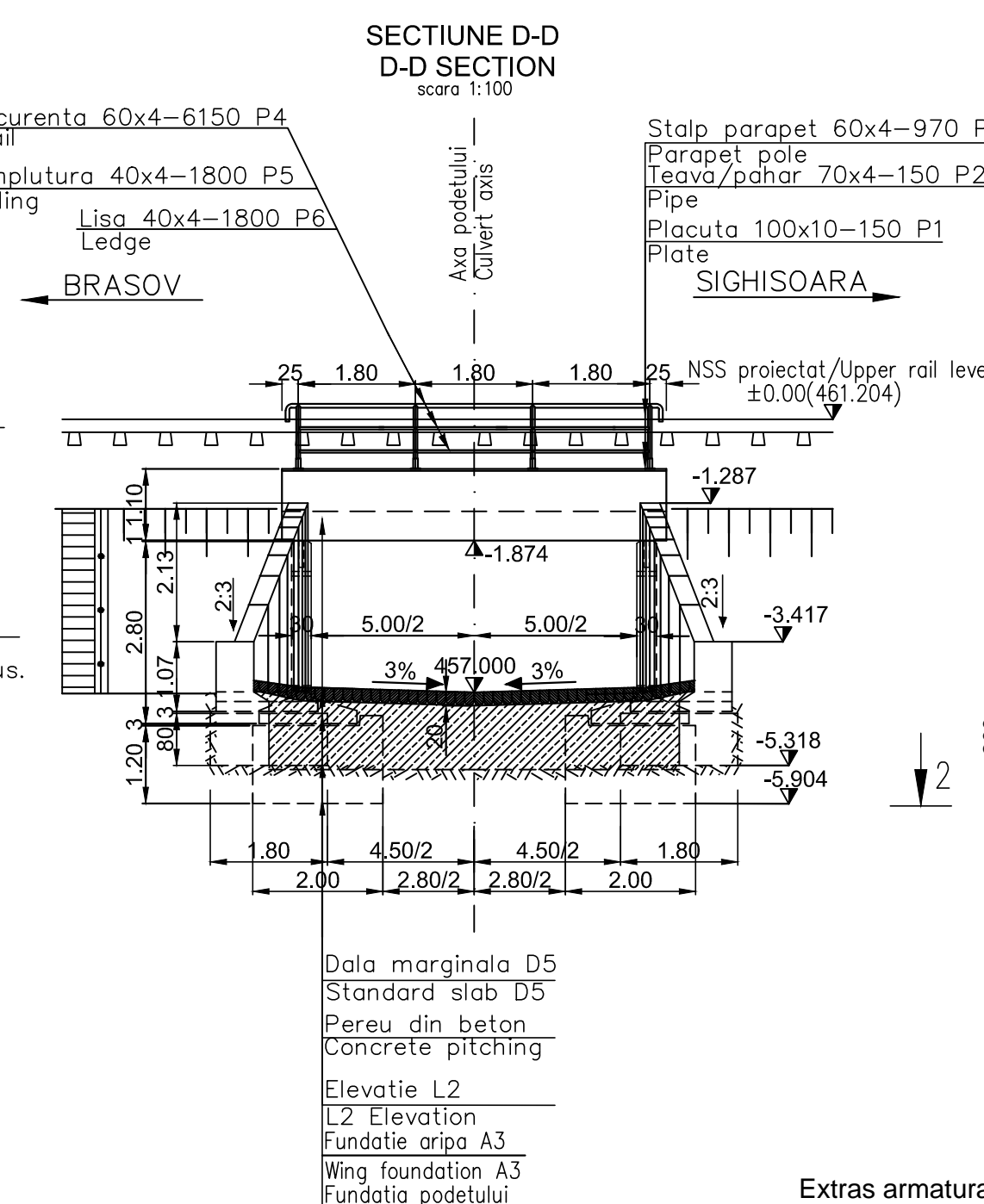
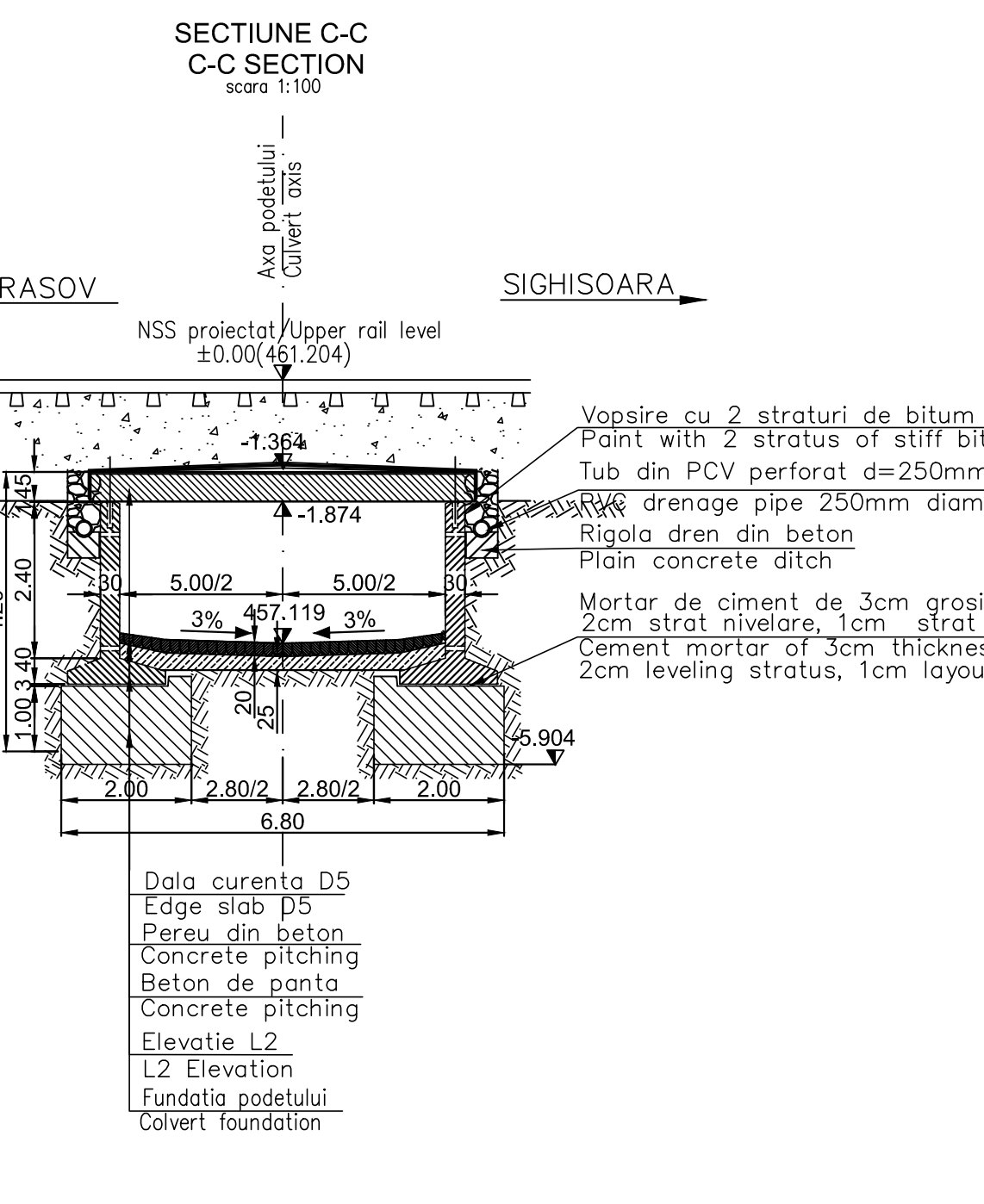
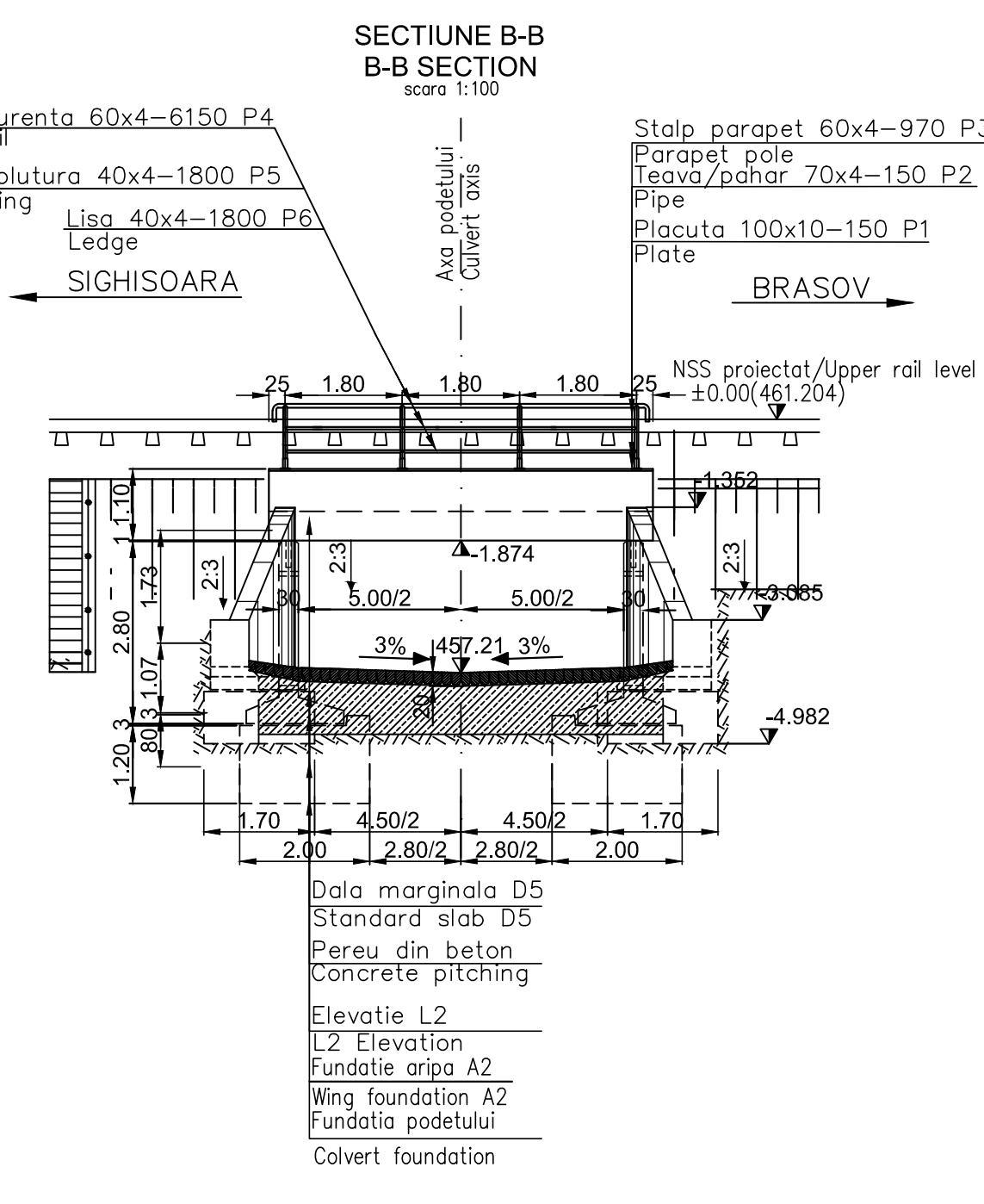
**NOTA**  
 Numar de elemente prefabricate  
 -Dale marginale D5 2buc.  
 -Dale curente D5 28buc.  
 -Aripi prefabricate A3 2buc.  
 -Aripi prefabricate A2 2buc.  
 -Elevatii L2 30buc.

**NOTE**  
 Number of precast section  
 -Standard slab D5 2pcs.  
 -Edge slab D5 28pcs.  
 -Prefabricated wings A3 2pcs.  
 -Prefabricated wings A2 2pcs.  
 -L2 elevation 30pcs.



Depuneri din nisip cu pietris, afanat.  
 Deposits of sand with gravel, loose.

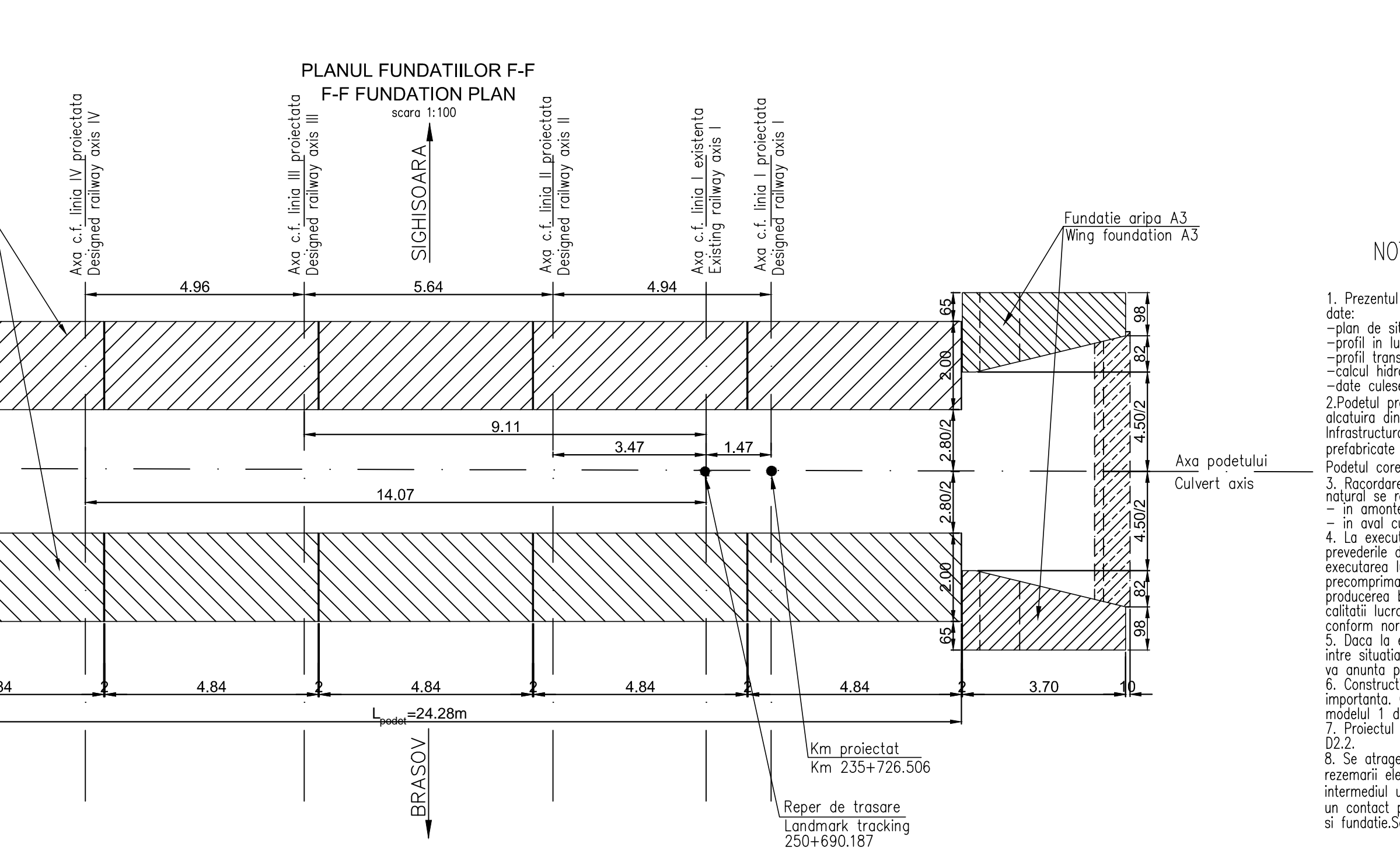
Prof. argilos, plastic moale, in baza plastic consistent.  
 Clay dust, soft plastic, plastic based on consistent.



**LEGENDA BETOANELOR / CONCRETE LIST**

	Beton in elementele prefabricate Concrete for prefabricated elements C35/45-CEM II/A-S32,5-(XC4+XF3+XA2)-A/C=0,50-Dmax22-Ci0,20
	Beton in fundatia podetelor, a elementelor de racordare (aripi, panti), in perete Concrete for the foundations of culverts, of connecting elements (wings, breakwaters), in pitching C25/30-CEM II/A-S 32,5-(XF1)-A/C=0,50-Dmax32-Ci0,20
	Beton in rigola drenurilor Concrete for the drain gutters C25/30-CEM II/A-S 32,5-(XC4+XF3+XA1)-A/C=0,50-Dmax32-Ci0,20
	Beton de panta Slope concrete C25/30-CEM II/A-S 32,5-(XF3)-A/C=0,55-Dmax16-Ci0,20

SE INTERZICE COPIEREA, DIFUZAREA, IMPRUMUTAREA SAU UTILIZAREA IN ALTE SCOPURI FARA PERMISIUNEA AREF LIDER COMPANY CA PROPRIETAR AL DESENULUI  
 THIS DRAWING IS FORBIDDEN TO BE COPIED, LENT OR USED IN OTHER PURPOSES THAN THOSE PREVIOUSLY APPROVED BY AREX LIDER COMPANY AS ITS OWNER.



**Extras armatura / Statement reinforcing**

Poz	Armatura	Reinforced steel	120	Ø10	1650	0.617	1.018	122.16
P6	Armatura	Reinforced steel	120	Ø10	1650	0.617	1.018	122.16
P7	Armatura	Reinforced steel	20	Ø10	4860	0.617	4.022	80.44
Total partial		Partially total					228.05	
Sudura 2%		Welding 2%					4.05	
TOTAL		kg					232.10	

**NOTA:**  
 1. Prezentul plan s-a intocmit pe baza armaturilor date de situatie  
 -plan de situatie  
 -profil in lung  
 -profil transversal  
 -calcul hidrolic  
 -date culise pe teren  
 2. Podetului proiectat de 5,00m span shall be carried out using prefabricated elements in suprastructura D5 slabs and in infrastructura L2 elevations and independent foundations. The culvert corresponds to the P10 and SW2 determination conveyors.  
 3. The culverts shall be connected to the embankment as follows:  
 - upstream, using prefabricated wings, type A2 downstream, using prefabricated wings, type A3  
 4. When carrying out the works, the Norm Practice code for the concrete works execution, reinforced and pre-stressed concrete NE 012/2-2010 and Practice code for concrete production NE 012/1-2007, the quality and the reception of the works shall be made according to Norm C6-1985.  
 5. If during the execution, discrepancies are found between the existing situation on site and the situation stated in the project, the designer will be notified.  
 6. The construction has been classified in B category of importance. High important constructions, model 1-ensuring the quality according to C.O. 766/97.  
 7. The project will be checked in order to comply with the AA.2, B2.2, D2.2 requirements.  
 8. Particular attention is drawn on binding prefabricated elevations settlement on block foundation through a layer of cement mortar to achieve a perfect contact over the entire surface between precast and foundation base. Propping is prohibited without direct layer of cement mortar.

**MATERIAL METALIC PENTRU CONFECTIONAREA PARAPETULUI PODETULUI / THE METALLIC MATERIAL TO BUILD PARAPET OF CULVERT**

Poz	Denumirea materialului / The denomination of the material	Buc.	Sectiune / Section	Long. / Long. (mm)	kg/m	kg/buc	kg
P1	Placuta prindere / Clamping plate	8	100x10	150	7.85	1.18	9.44
P2	Stalp parapet EN 10297 - E275 / Parapet pole	8	60x4	970	5.52	5.36	42.88
P3	Mana curenta EN 10297 - E275 / Handrail	2	60x4	6150	5.52	33.95	67.90
P4	Umplutura EN 10058 / Filling	6	40x4	1800	3.35	6.03	36.18
P5	Lisa EN 10058 / Ledge	6	40x4	1800	3.35	6.03	36.18
Total partial / Partially total						200.42	
Sudura 2% / Welding 2%						4.01	
TOTAL						204.43	

D	C	B	A

**GVERNUL ROMANIEI / ROMANIAN GOVERNMENT**  
**PROIECT FINANTAT DE UNIUNEA EUROPEANA / EUROPEAN UNION FINANCED PROJECT**

**CFR**  
**C.N.C.F. "C.F.R." - S.A.**

**CONSULTANT / CONSULTANT**

Approbat / Approved	Proiectant / Designer	Verificat / Checked	Data / Date	Semn-tur / Signature
	R. Liuzza			
	C. Gambelli			
	V. Kallidromitis			

**SUBCONTRACTANT / SUBCONTRACTOR**

Approbat / Approved	Responsabil / Subcontractant Responsible	Data / Date	Semn-tur / Signature
	A. Dinulescu Stanciu	09.2011	

**PODET - KM 235+726.506 / KM 235+726.506 - CULVERT**  
**DISPOZITIE GENERALA / GENERAL DISPOSITION**

Codificare / Codification System	Scara / Scale	LOT / LOT	Nr / No
	1:100, 1:5		01/01