

SONDAJ/DRILL
1Pv+Ø3"

DATE HIDRAULICE

- Inaltimea de apa in podet: h=1.30m
- Perimetrul udat: P=7.62m
- Aria: A=6.55m²
- V. curgere apa: V=3.59mc/s

HYDRAULIC DATA

- Hydraulic height: h=1.30m
- Perimeter: P=7.62m
- Surface: A= 6.55m²
- Water low speed: V=3.59mc/s

NOTE

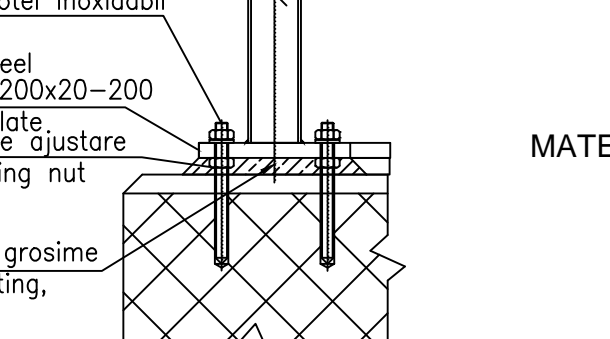
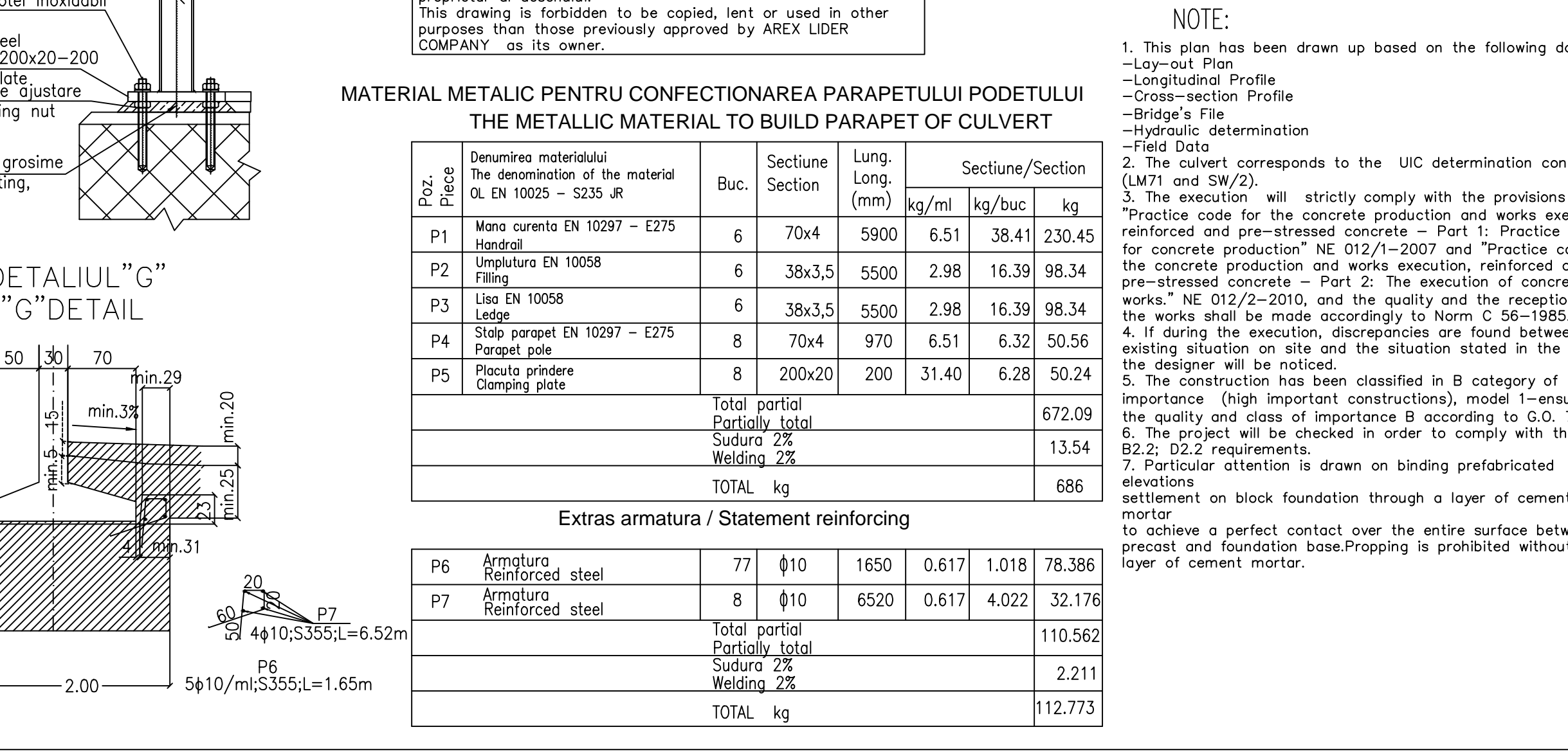
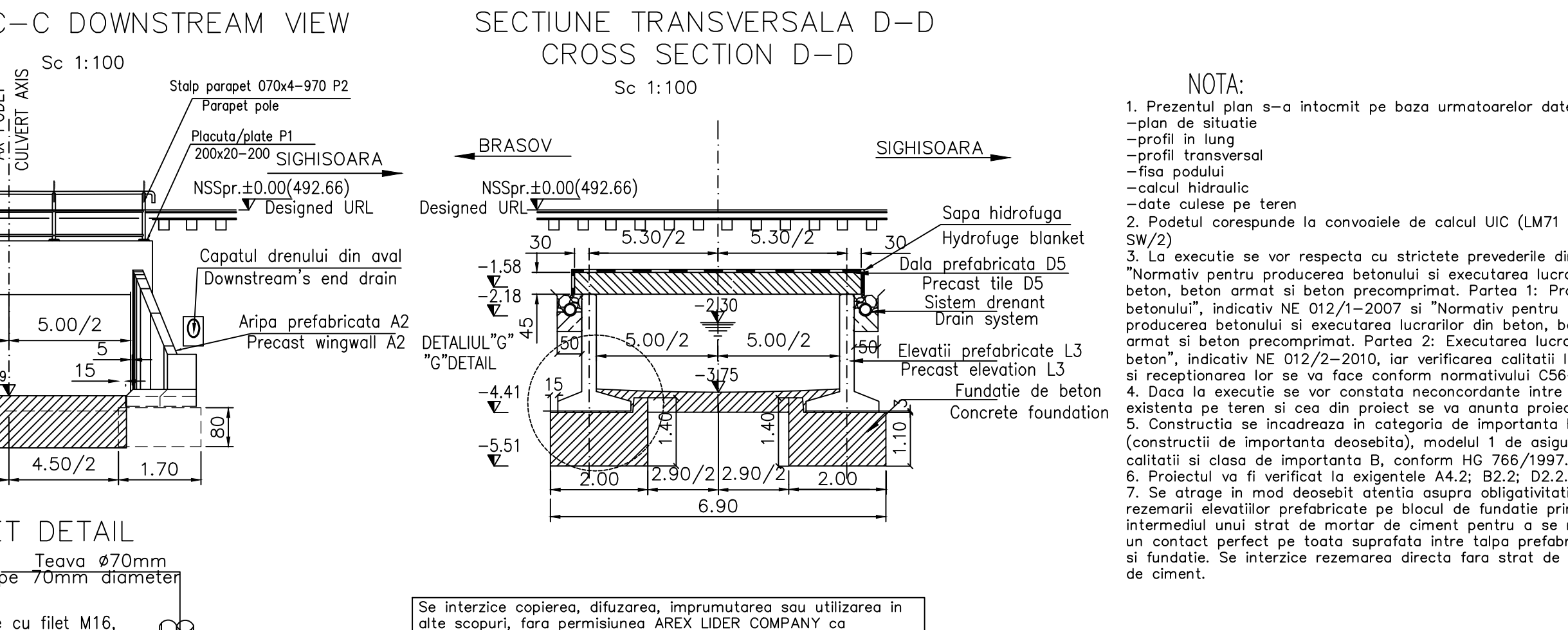
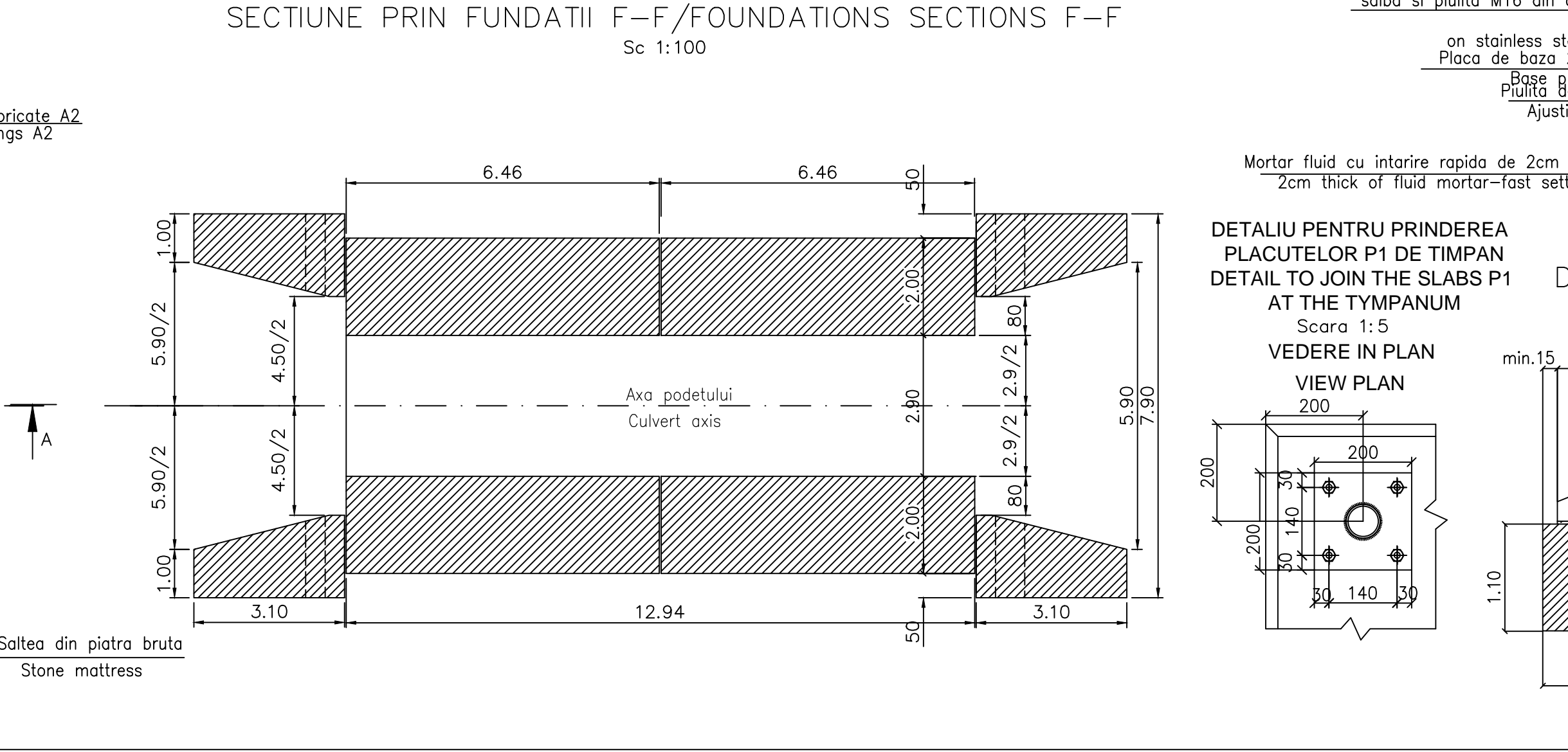
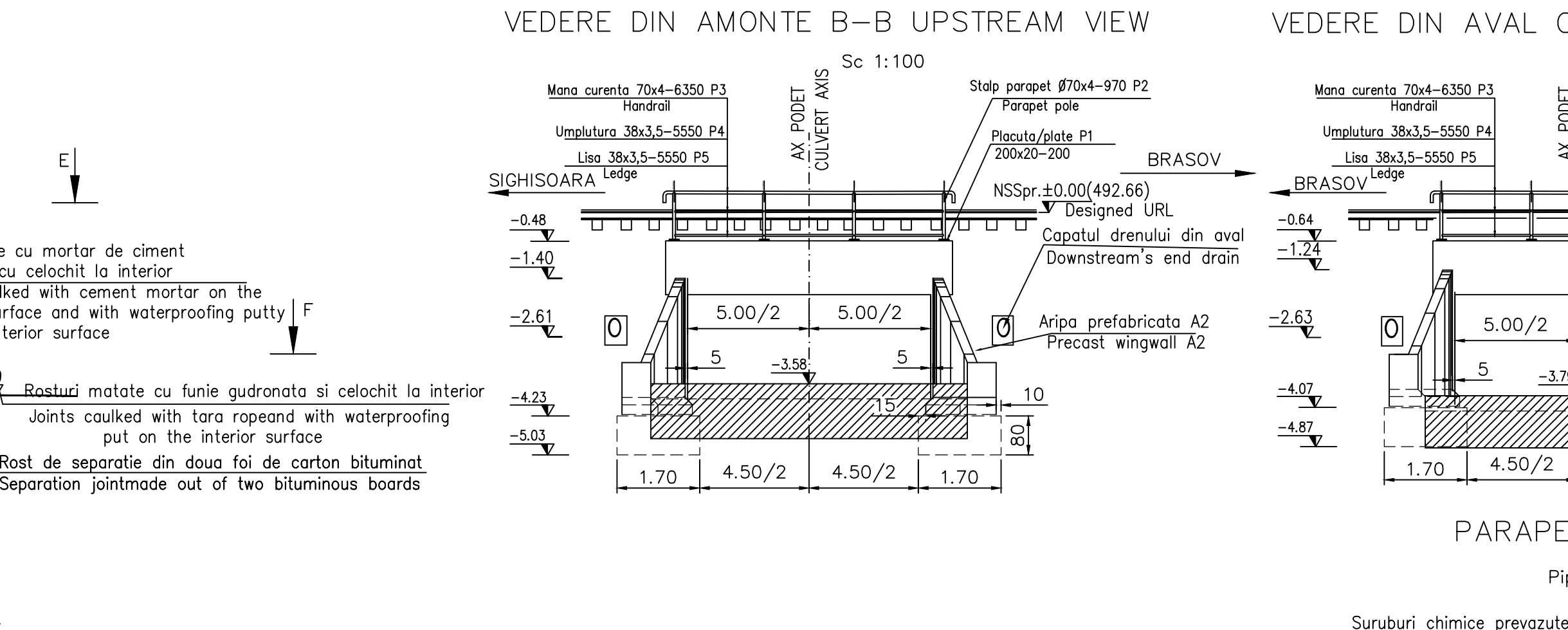
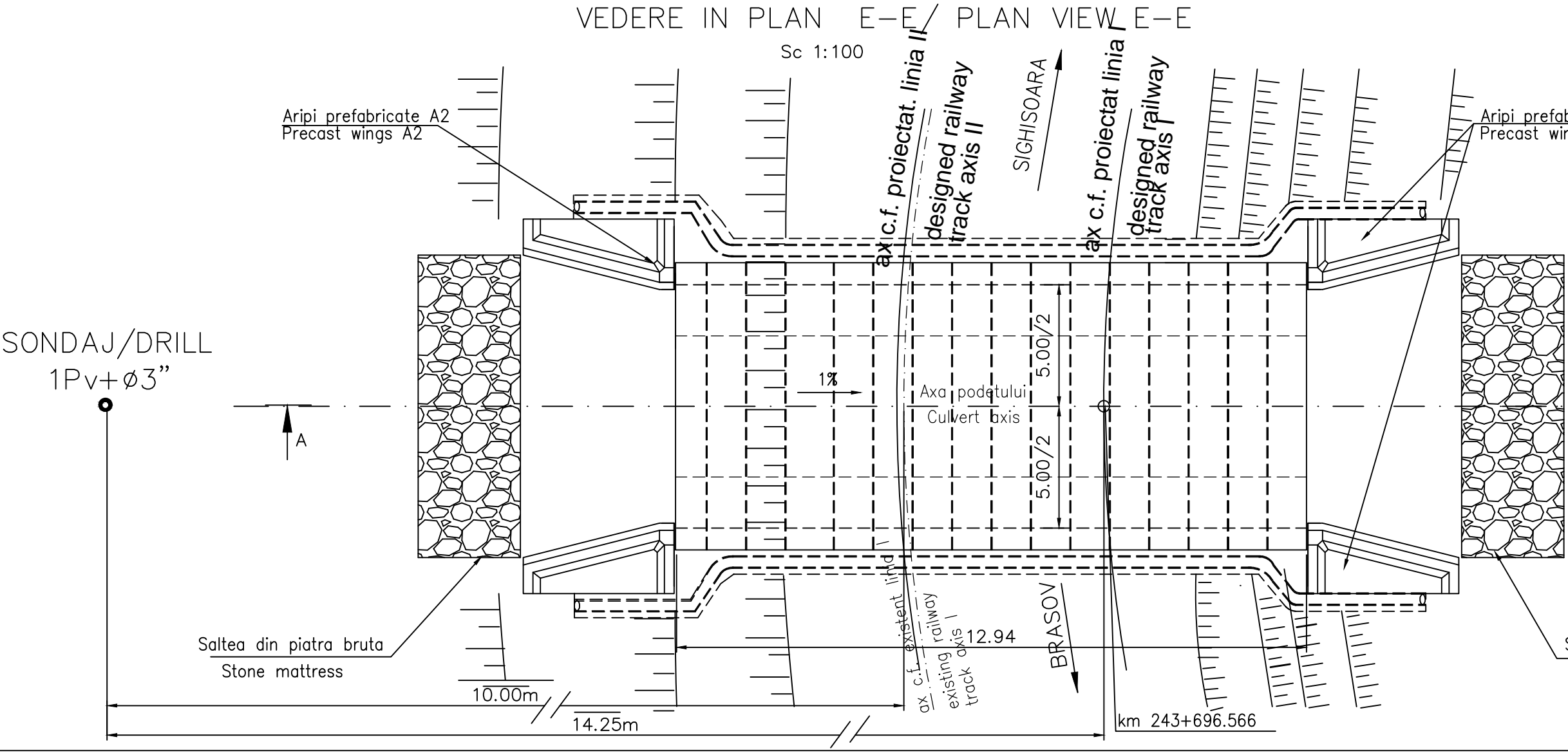
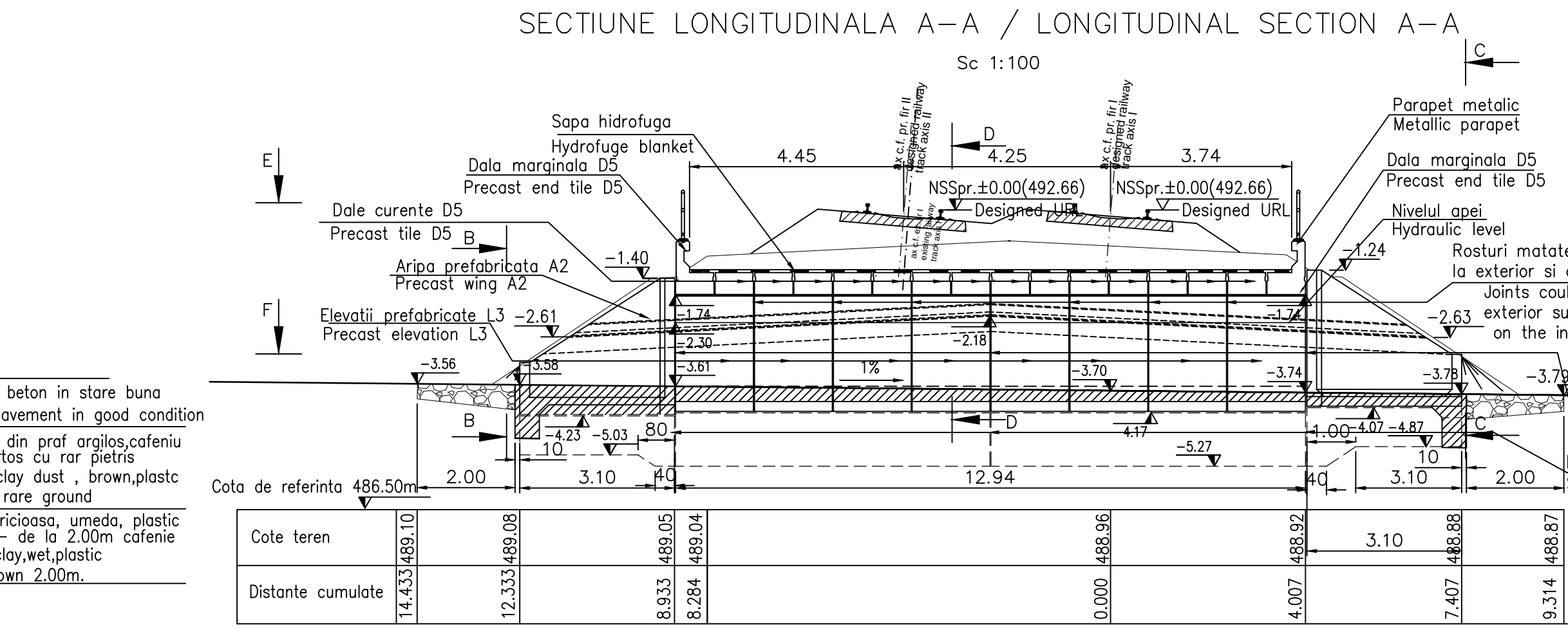
- Numar de elemente prefabricate
- Dale marginale D5: 2buc.
- Dale curente D5: 14buc.
- Aripi prefabricate A2: 42buc.
- Elevatii L3: 16buc.

NOTE

- Number of precast sections:
- Precast end tile D5: 2pcs.
- Precast tile D5: 14pcs.
- Precast wingwall A2: 42pcs.
- Elevations L3: 16pcs.

LEGENDA BETOANELOR CONCRETE LIST

- Beton în elemente prefabricate în general (cadre, aripi, timpone), Concrete for prefabricated elements generally (frames, wings, tympanos)
- Beton în fundatia podetelor, a elementelor de racordare (aripi, pinteni), în peruu, Concrete for the foundations of culverts, of connecting elements (wings, breakwaters), in pitching
- Beton în rigola drenurilor, fundatiile sferturilor de con si pentru realizarea stratului suport pentru peruu, Concrete for the drain gutters, for the foundations of cone quarters and for the support layer of revetment
- Beton în stratul de protectie a hidroizolatiei, Concrete for the waterproofing protection layer



MATERIAL METALIC PENTRU CONFECTIONAREA PARAPETULUI PODETULUI
THE METALLIC MATERIAL TO BUILD PARAPET OF CULVERT

Poz. / Piece	Denumirea materialului / The denomination of the material	Buc. / Qty	Sectie / Section	Lung. / Long. (mm)	Sectie/Section	
					kg/ml	kg/buc
P1	Mana curenta EN 10297 - E275 Handrail	6	70x4	5900	6.51	38.41
P2	Umplutura EN 10058 Filling	6	38x3,5	5500	2.98	16.39
P3	Lisa EN 10058 Ledge	6	38x3,5	5500	2.98	16.39
P4	Stalp parapet EN 10297 - E275 Parapet pole	8	70x4	970	6.51	50.56
P5	Placuta prindere Clamping plate	8	200x20	200	31.40	6.28
Total partial					672.09	
Sudura 2% Welding 2%					13.54	
TOTAL					686	

Extras armatura / Statement reinforcing

Poz. / Piece	Denumirea materialului / The denomination of the material	Buc. / Qty	Sectie / Section	Lung. / Long. (mm)	Sectie/Section	
					kg/ml	kg/buc
P6	Armatura Reinforced steel	77	Ø10	1650	0.617	1.018
P7	Armatura Reinforced steel	8	Ø10	6520	0.617	4.022
Total partial					110.562	
Sudura 2% Welding 2%					2.211	
TOTAL					112.773	

NOTA:

- Prezentul plan s-a intocmit pe baza urmatoarelor date:
 - plan de situatie
 - profil in lung
 - profil transversal
 - fisa podului
 - calcul hidraulic
 - date culese pe teren
- Podetul corespunde la convoaiele de calcul UIC (LM71 si SW/2)
- La executie se vor respecta cu strictete prevederile din "Normativ pentru producerea betonului si executarea lucrarilor din beton, beton armat si beton precomprimat. Partea 1: Producerea betonului", indicativ NE 012/1-2007 si "Normativ pentru producerea betonului si executarea lucrarilor din beton, beton armat si beton precomprimat. Partea 2: Executarea lucrarilor din beton", indicativ NE 012/2-2010, iar verificarea calitatii lucrarilor si receptionarea lor se va face conform normativului C56-1985.
- Daca la executie se vor constata neconcordante intre situatia existenta pe teren si cea din proiect se va anunta proiectantului.
- Construcția se încadrează în categoria de importanță B (construcții de importanță deosebită), modelul 1 de asigurare a calitatii si clasa de importanta B, conform HG 766/1997.
- Proiectul va fi verificat la exigentele A4.2; B2.2; D2.2.
- Se atrage in mod deosebit atentie asupra obligativitatii rezemarii elevatiilor prefabricate pe blocul de fundatie prin intermediul unui strat de mortar de ciment pentru a se realiza un contact perfect pe toata suprafata intre talpa prefabricatului si fundatie. Se interzice rezemarea directa fara strat de mortar de ciment.

NOTE:

- This plan has been drawn up based on the following data:
 - Lay-out Plan
 - Longitudinal Profile
 - Cross-section Profile
 - Bridges File
 - Hydraulic determination
 - Field Data
- The culvert corresponds to the UIC determination convoys (LM71 and SW/2).
- The execution will strictly comply with the provisions of "Practice code for the concrete production and works execution, reinforced and pre-stressed concrete - Part 1: Practice code for concrete production" NE 012/1-2007 and "Practice code for the concrete production and works execution, reinforced and pre-stressed concrete - Part 2: The execution of concrete works." NE 012/2-2010, and the quality and the reception of the works shall be made accordingly to Norm C 56-1985.
- If during the execution, discrepancies are found between the existing situation on site and the situation stated in the project, the designer will be notified.
- The construction has been classified in B category of importance (high important constructions), model 1-ensuring the quality and class of importance B according to G.O. 766/97.
- The project will be checked in order to comply with the A4.2; B2.2; D2.2 requirements.
- Particular attention is drawn on binding prefabricated elevations settlement on block foundation through a layer of cement mortar to achieve a perfect contact over the entire surface between precast and foundation base. Propping is prohibited without direct layer of cement mortar.

Indice / Index	Data / Date	Revizuire / Revision	Proiectant / Designer	Aprobat / Approved	Consultant / Consultant	Aprobat / Approved
	12.2011	Revizia 1	Ioan Rentea			



CONSULTANT / CONSULTANT

Aprobat / Approved	Șef proiect / Project manager	R. Liuzza
	Coordonator Sectiune 1 / Section 1 Coordinator	C. Gambelli
	Expert Cheie / Key Expert	V. Kalidromitis

SUBCONTRACTANT / SUBCONTRACTOR

Aprobat / Approved	Responsabil Subcontractant / Subcontractant Responsible	A. Dinulescu Stanciu
	Proiectant / Designer	Ioan Rentea

Reabilitarea liniei de cale ferata Brasov - Simeria, parte componenta a coridorului IV Pan European, pentru circulatia trenurilor cu viteza maxima de 160 km/h, **Tronsoanel: Brasov - Sighisoara**

Rehabilitation of the railway line Brasov - Simeria, component Part of the IV Pan-European Corridor, for the trains circulation with maximum speed of 160 km/h, **Section : Brasov - Sighisoara**

Denumire desen / Drawing Title :

INTERVAL/SECTION CATA-ARCHITA
PODET km 243+696,566 / DISPOZITIE GENERALA
CULVERT km 243+696,566 / GENERAL LAYOUT

Codificare / Codification System	Scara / Scale	LOT / LOT	Nr. / No
E A 5 1 0 1 C 1 4 P A P O 0 5 1 1 0 0 2 1	1:100		01 / 01