

DATE HIDRAULICE:

- Inaltimea de apa: h=0.40m
- Perimetrul udat: P=2.80m
- Aria udata: A=0.80m
- Viteza de curgere apa V=1.97m/s

HIDRAULIC DATA:

- Hydraulic height: h=0.40m
- Perimeter: P=2.80m
- surface: A=0.80m
- Water flow speed: V=1.97m/s

NOTA

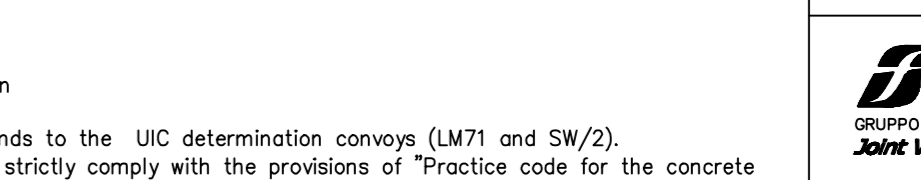
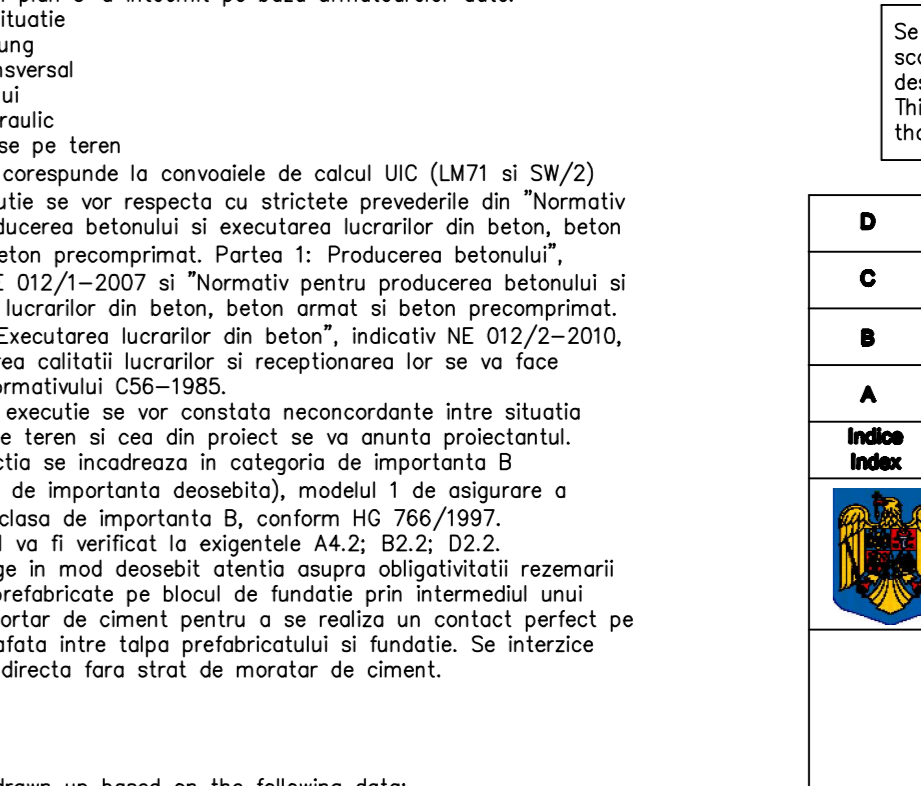
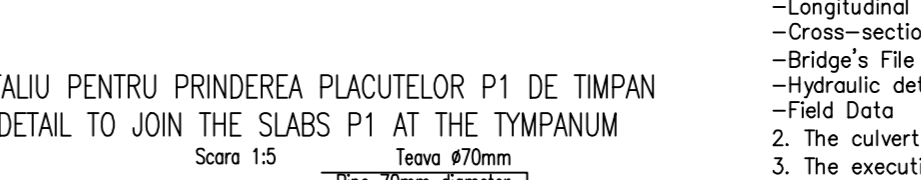
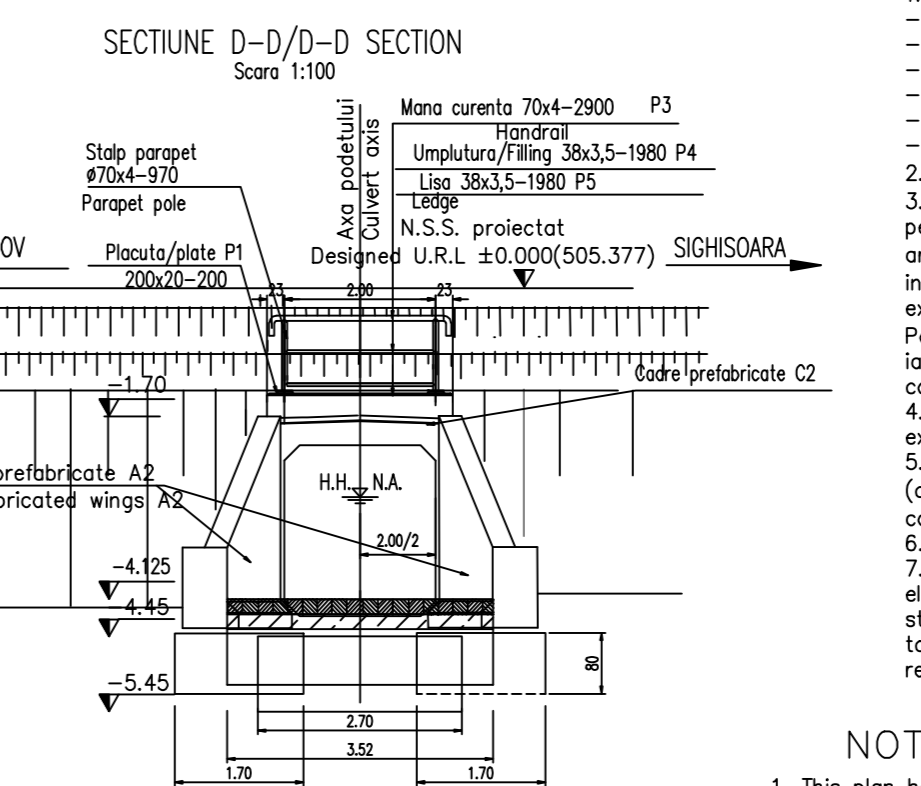
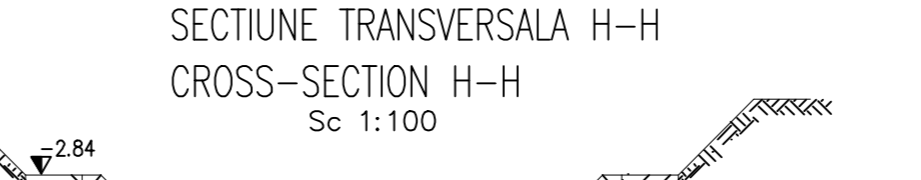
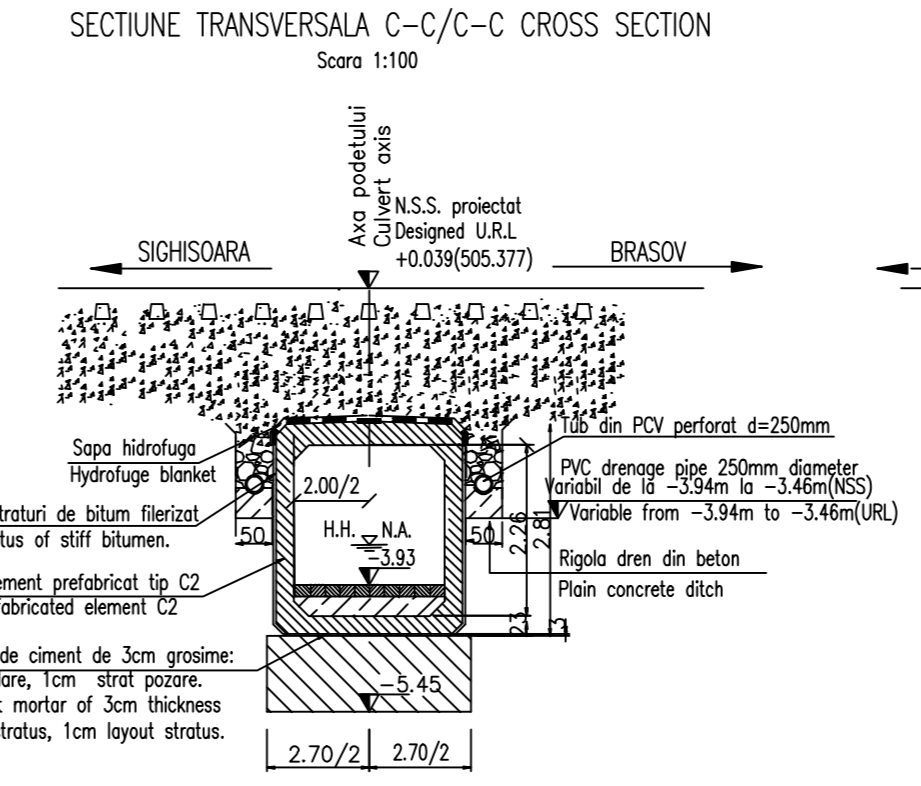
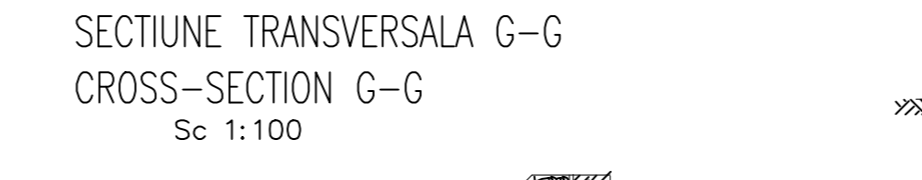
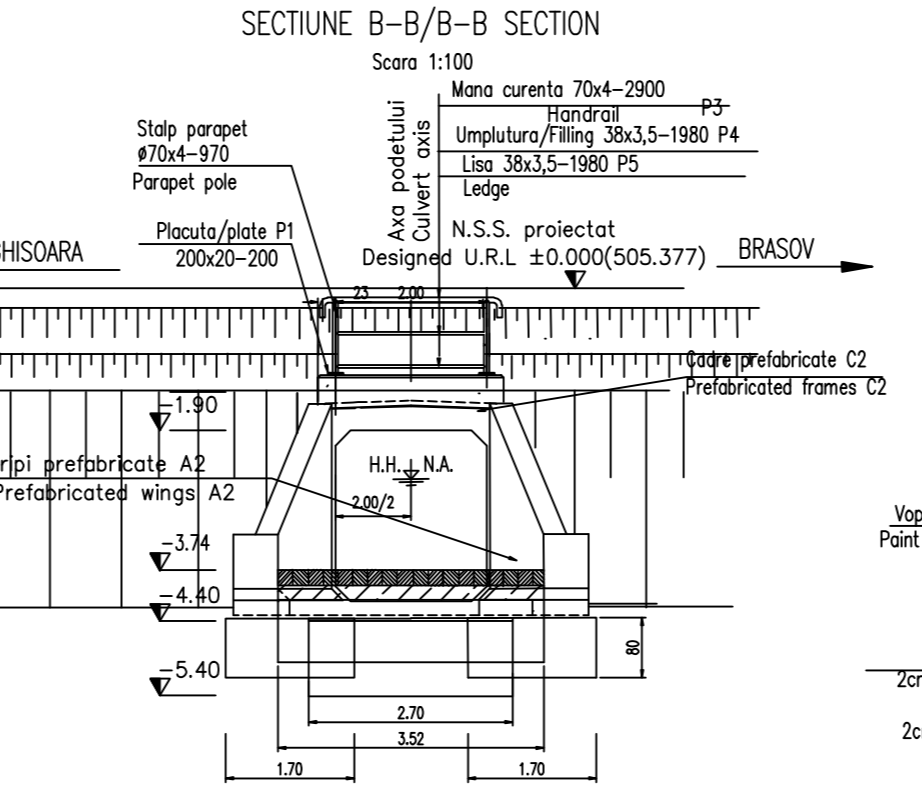
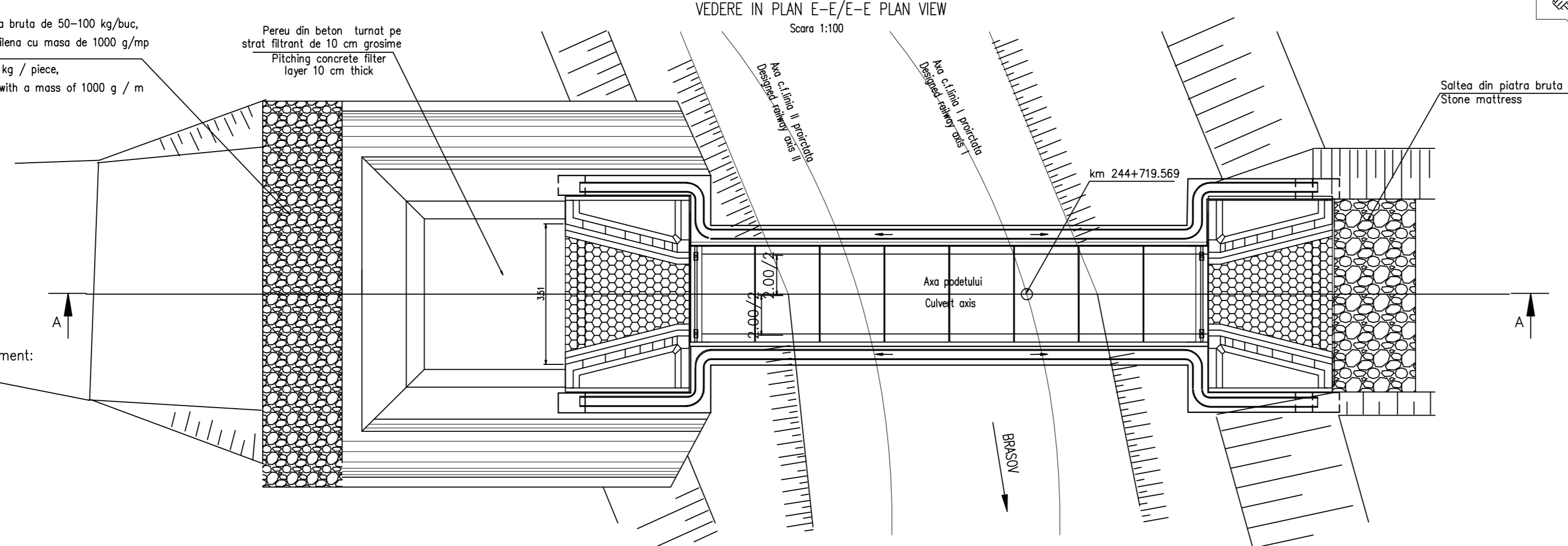
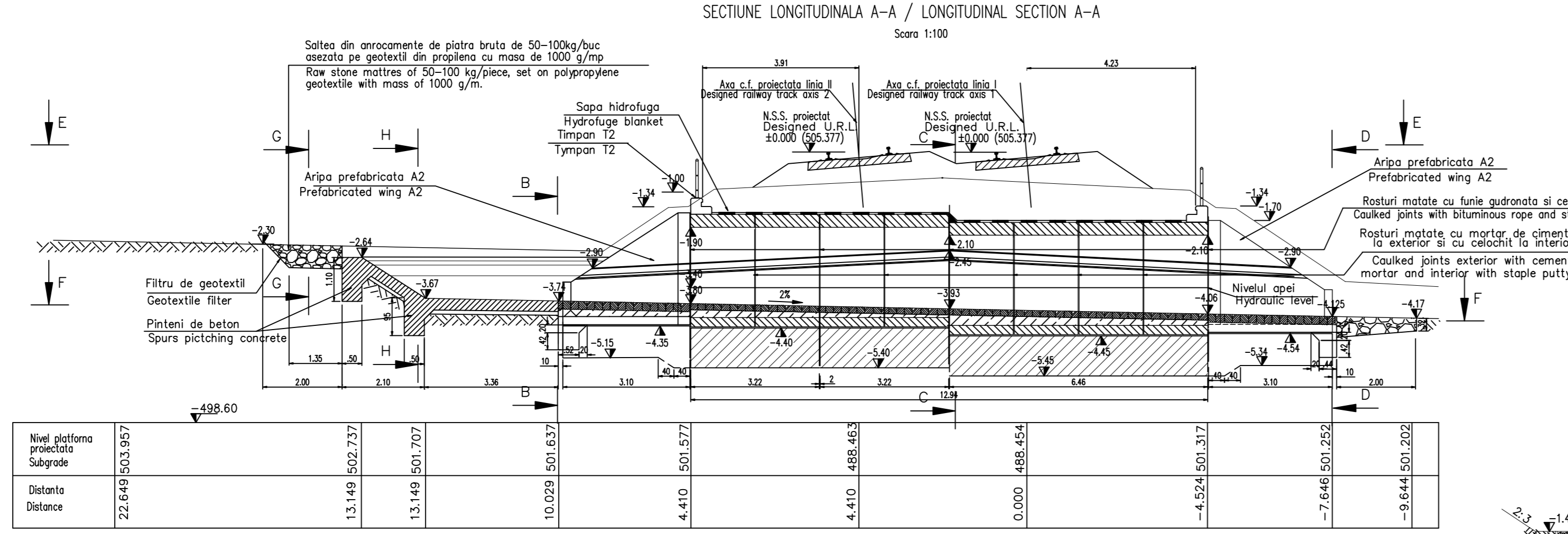
- Numar de elemente prefabricate
- Cadre prefabricate C2: 8buc.
- Aripi prefabricate A2: 4buc.
- Timpane prefabricate: 2buc.

NOTE

- Number of precast section
- Prefabricated frames C2: 8pcs.
- Prefabricated wings A2: 4pcs.
- Head-wall: 2pcs.

LEGENDA BETOANELOR CONCRETE LIST

- Beton în elemente prefabricate în general (cadre, aripi, timpane);
-Concrete for prefabricated elements generally (frames,wings, tympana, C 35/45 - CEM II/A - S 32,5 - (XC4+XF3+XA1) - A/C = 0,50 - Dmax22 - Cl 0,20
- Beton în fundatia podetelor, a elementelor de racordare (aripi, pinteni), in percu concrete for the foundations of culverts, of connecting elements (wings, breakwaters), in pitching C25/30-CEM II/A-S 32,5-(XF1)-A/C=0,50-Dmax32-Cl0.20
- Beton în rigola drenurilor, fundatiile sferurilor de con si pentru realizarea stratului suport pentru percu;
-Concrete for the drain gutters, for the foundations of cone quarters and for the support layer of revetment: C 25/30 - CEM II/A - S 32,5 - (XC4+XF3+XA1) - A/C = 0,50 - Dmax32 - Cl 0,20
- Beton în stratul de protectie a hidroizolatiei;
-Concrete for the waterproofing protection layer: C 25/30 - CEM II/A - S 32,5 - (XC4+XF3) - A/C = 0,50 - Dmax16 - Cl 0,20



MATERIAL METALIC PENTRU CONFECTIONAREA PARAPETULUI PODETULUI / THE METALLIC MATERIAL TO BUILD PARAPET OF CULVERT

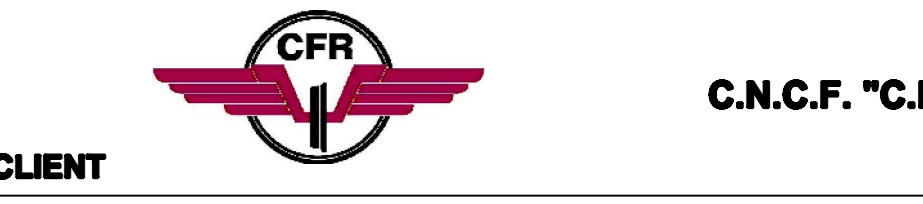
Poz. / Piece	Denumirea materialului / The denomination of the material	Buc. / Section	Lung. / Long. (mm)	Sectiune / Section			
				kg/ml	kg/buc	kg	
P1	Placuta prindere Clamping plate	4	200x200	200	31.40	6.28	25.12
P2	Stalp parapet EN 10297 - E275 Parapet pole	4	70x4	970	6.51	6.32	25.26
P3	Mana curenta EN 10297 - E275 Handrail	2	70x4	2900	6.51	18.88	37.76
P4	Umplutura EN 10058 Filling	2	38x3,5	1980	2.98	5.90	11.80
P5	Lisa EN 10058 Ledge	2	38x3,5	1980	2.98	5.90	11.80
				Total partial / Partially total	111.74		
				Sudura 2% / Welding 2%	2.24		
				TOTAL kg	115		

NOTA:

- Prezentul plan s-a întocmit pe baza următoarelor date:
- plan de situatie
- profil în lung
- profil transversal
- calcul hidrolic
- date culese pe teren

The drawing is forbidden to be copied, lent or used in other purposes than those previously approved by AREX LIDER COMPANY as its owner.

D					
C					
B					
A	12.2011	Revizia 1	Ioan Rentea		
Index	Date	Modificari / Modifications/Revision	Proiectant / Designer	Approbat / Approved Consultant	Approbat CFR / Approved CFR



CONSULTANT / CONSULTANT

Approbat / Approved	Sef proiect / Project manager	R. Liuzza	Data / Date	Semnatura / Signature
Approbat / Approved	Coordonator Sectiune 1 / Section 1 Coordinator	C. Gambelli		
Verificat / Checked	Expert Cheie / Checking Expert	V.Kallidromitis		

SUBCONTRACTANT / SUBCONTRACTOR

Approbat / Approved	Responsabil Subcontractant / Subcontractant Responsible	A. Dinulescu Stanciu	11.2011	
Intocmit / Elaborated	Proiectant / Designer	Ioan Rentea	11.2011	

Reabilitarea liniei de cale ferata Brasov - Simeria, parte componentă a a coridorului IV Pan European, pentru circulația trenurilor cu viteza maximă de 160 km/h, Tronsoanel : Brasov - Sighisoara
Rehabilitation of the railway line Brasov - Simeria, component Part of the IV Pan-European Corridor, for the trains circulation with maximum speed of 160 km/h, Section : Brasov - Sighisoara

Project/Project 2004/RO16/PA003
Faza / Phase: P.Th. / T.D.

Denumire desen / Drawing Title :

INTERVAL / SECTION:GATA - ARCHITA
PODET - KM 244+719,569 / CULVERT KM 244+719,569
DISPOZITIE GENERALA / GENERAL LAYOUT

Codificare / Codification System	Scara / Scale	LOT / LOT	Nr. / No
E A 5 1	1:100; 1:50		01 / 01

E|A|5|1 01 C 14 PA PO 07 5 1 002 1