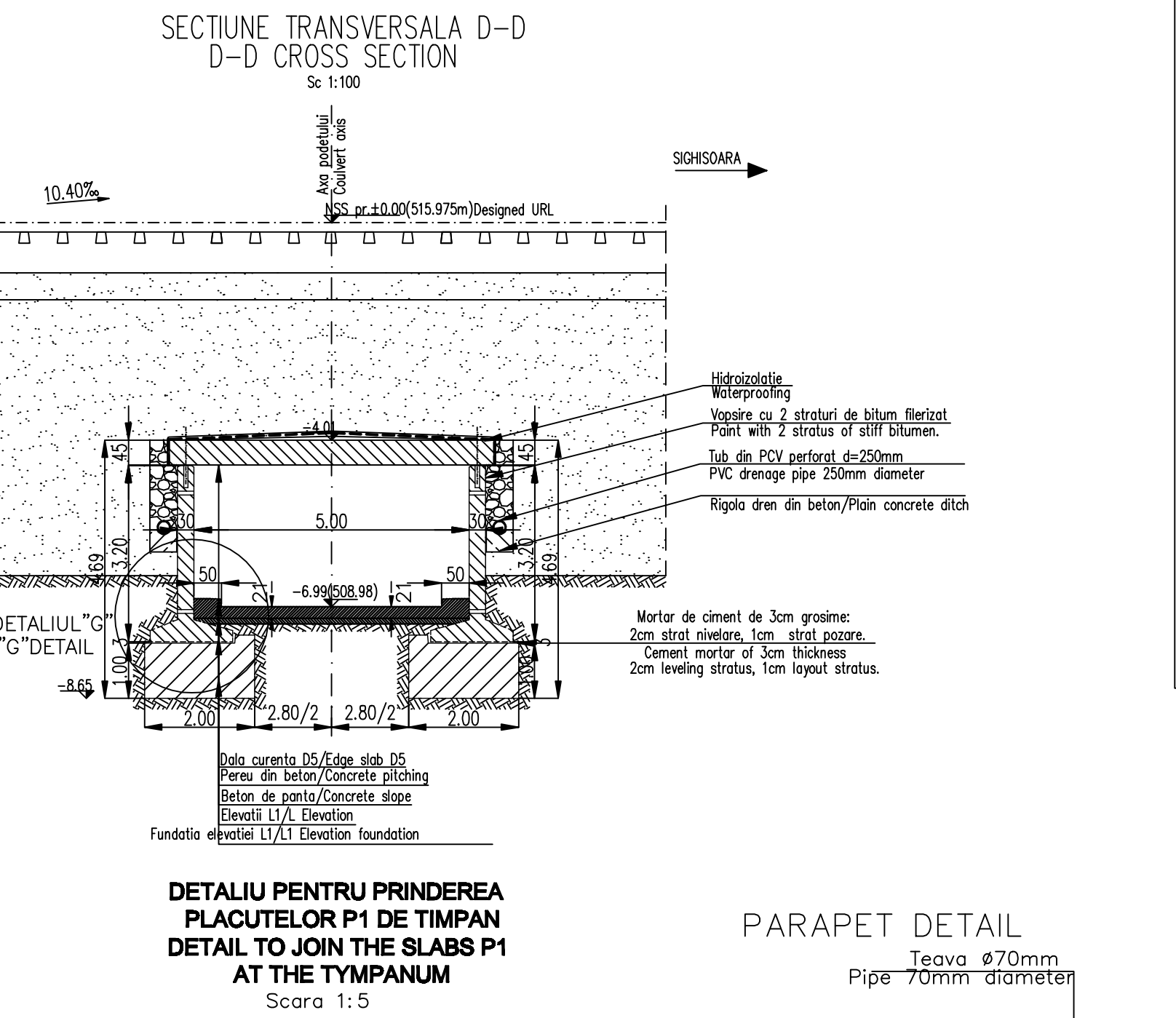
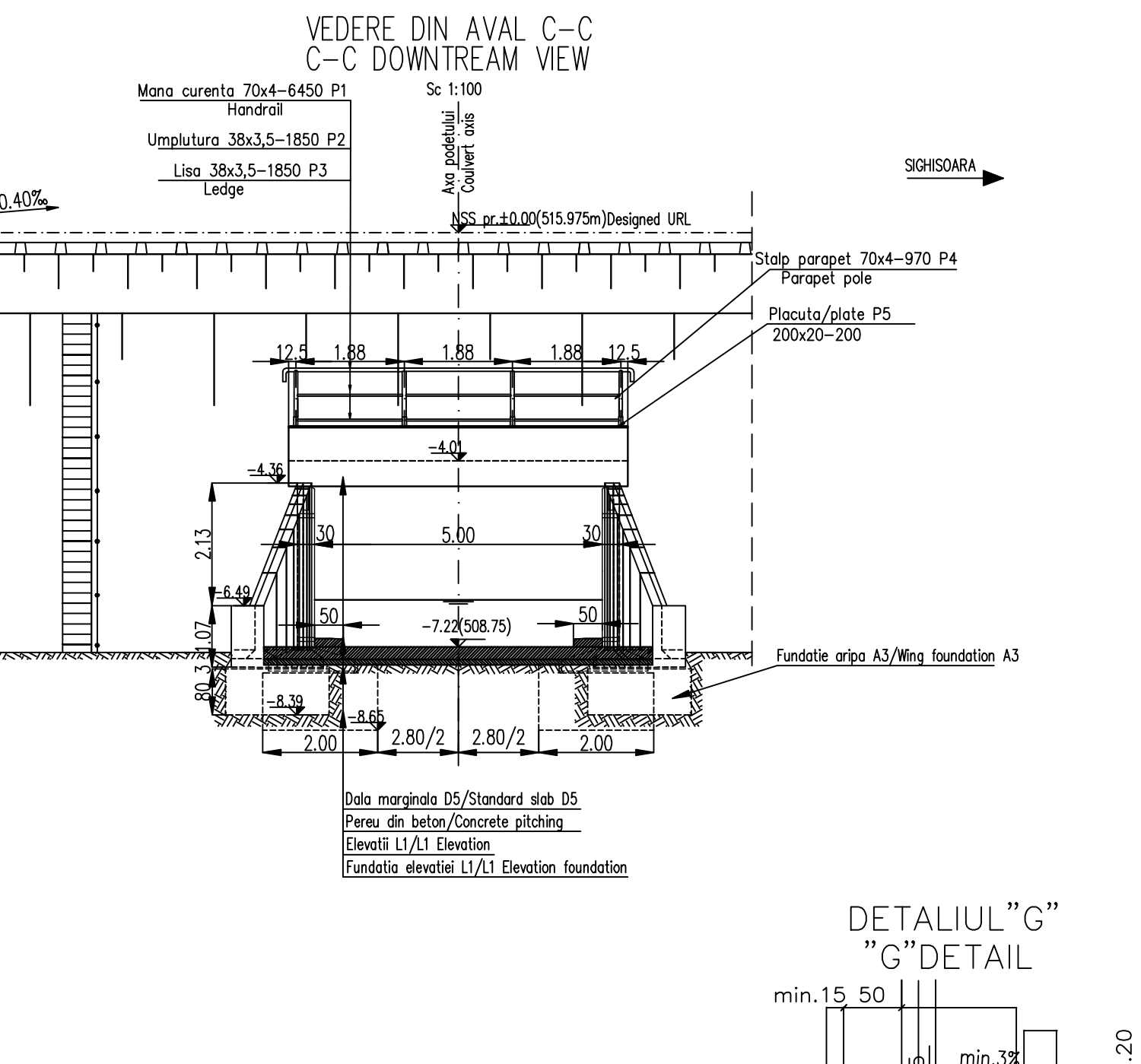
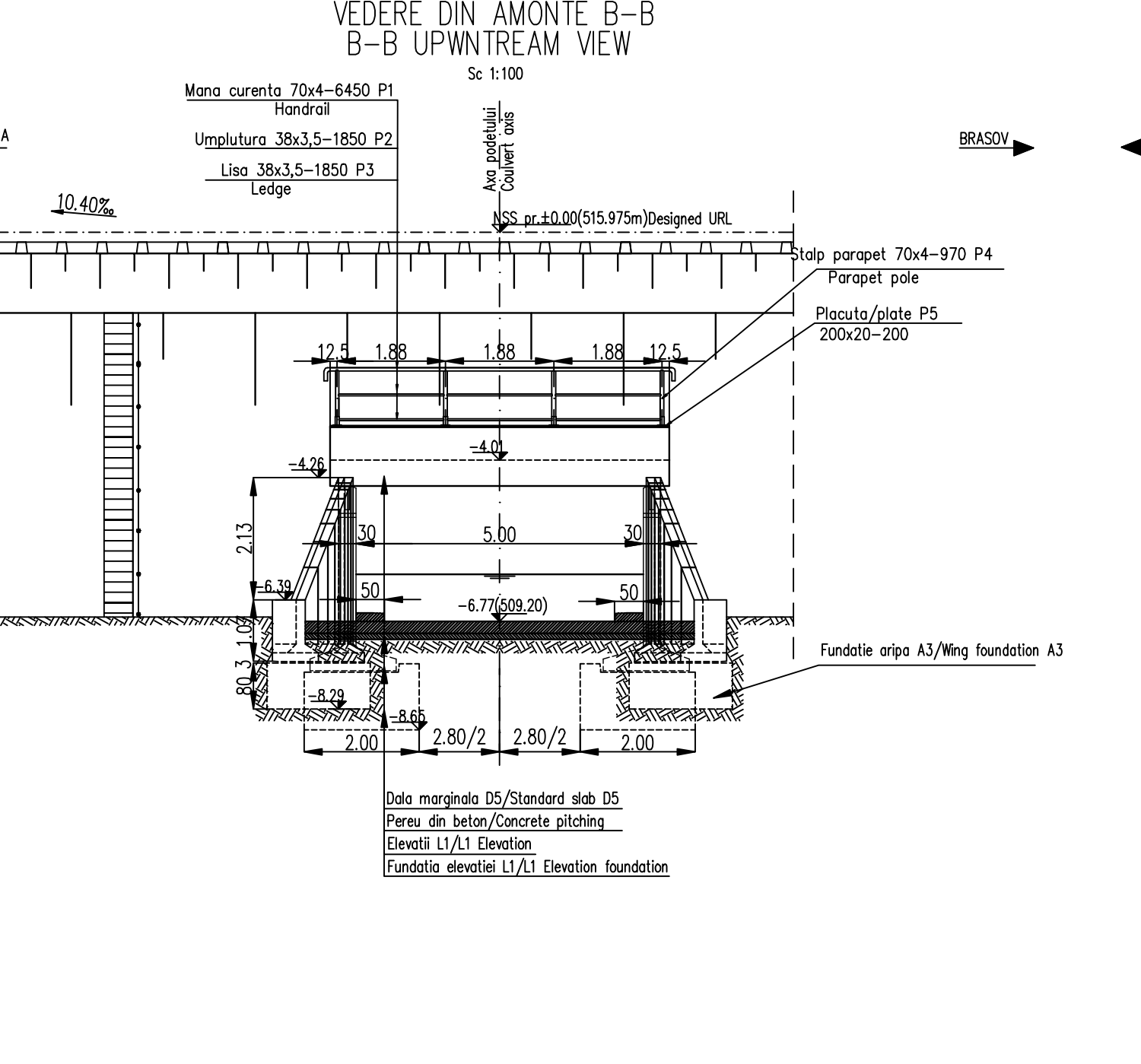
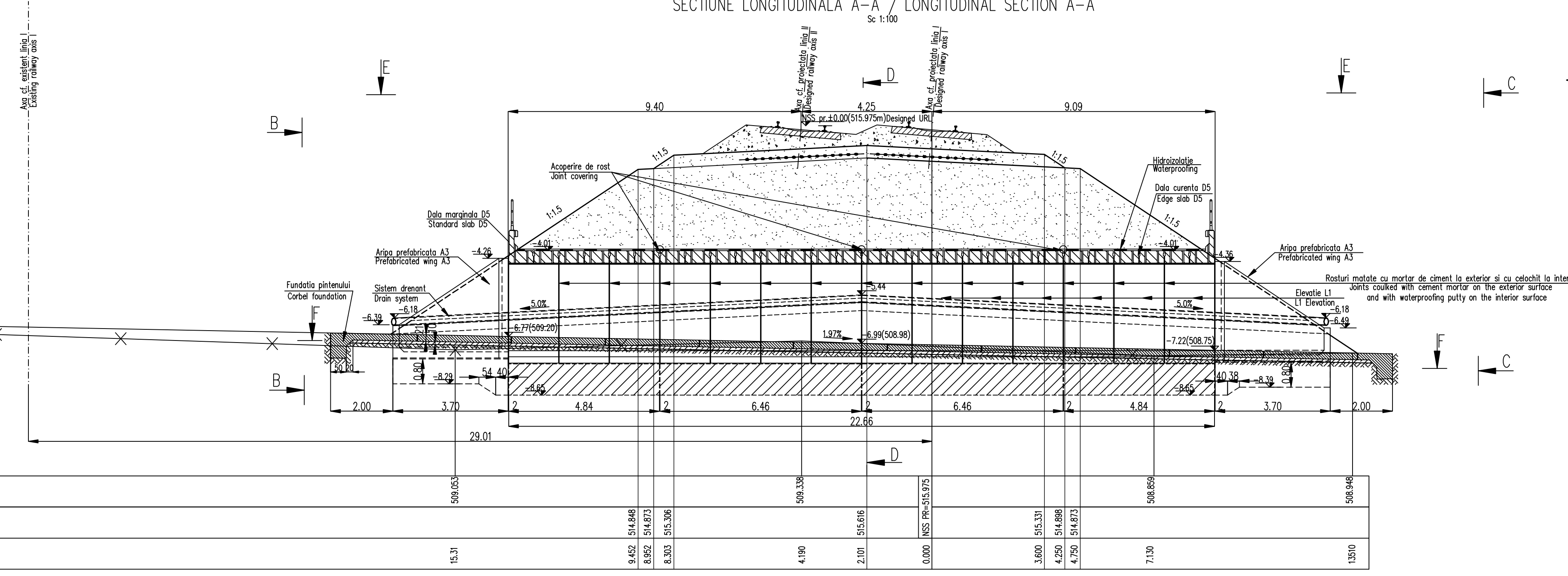
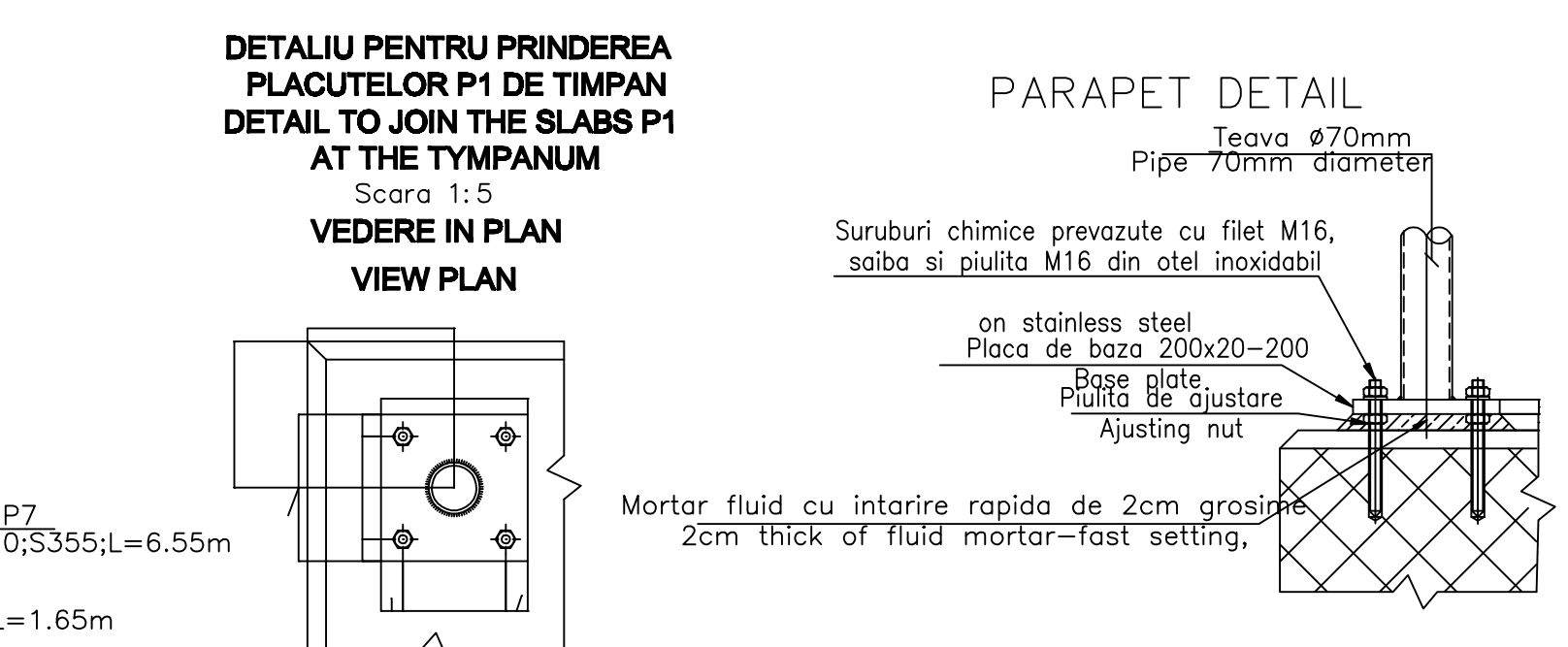
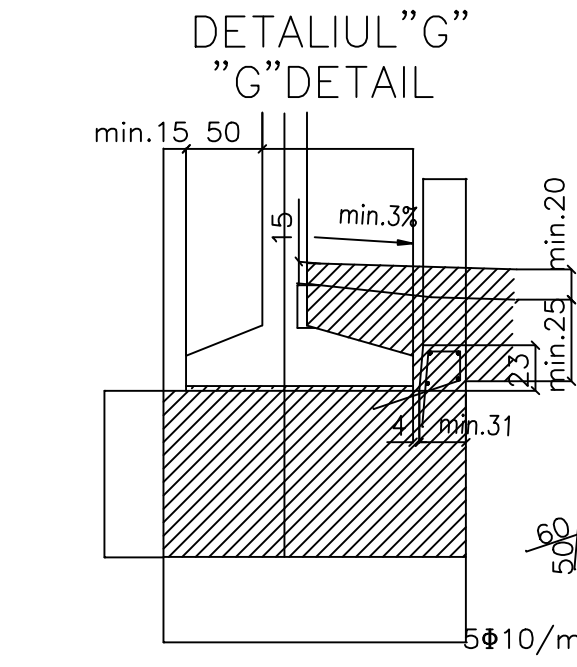
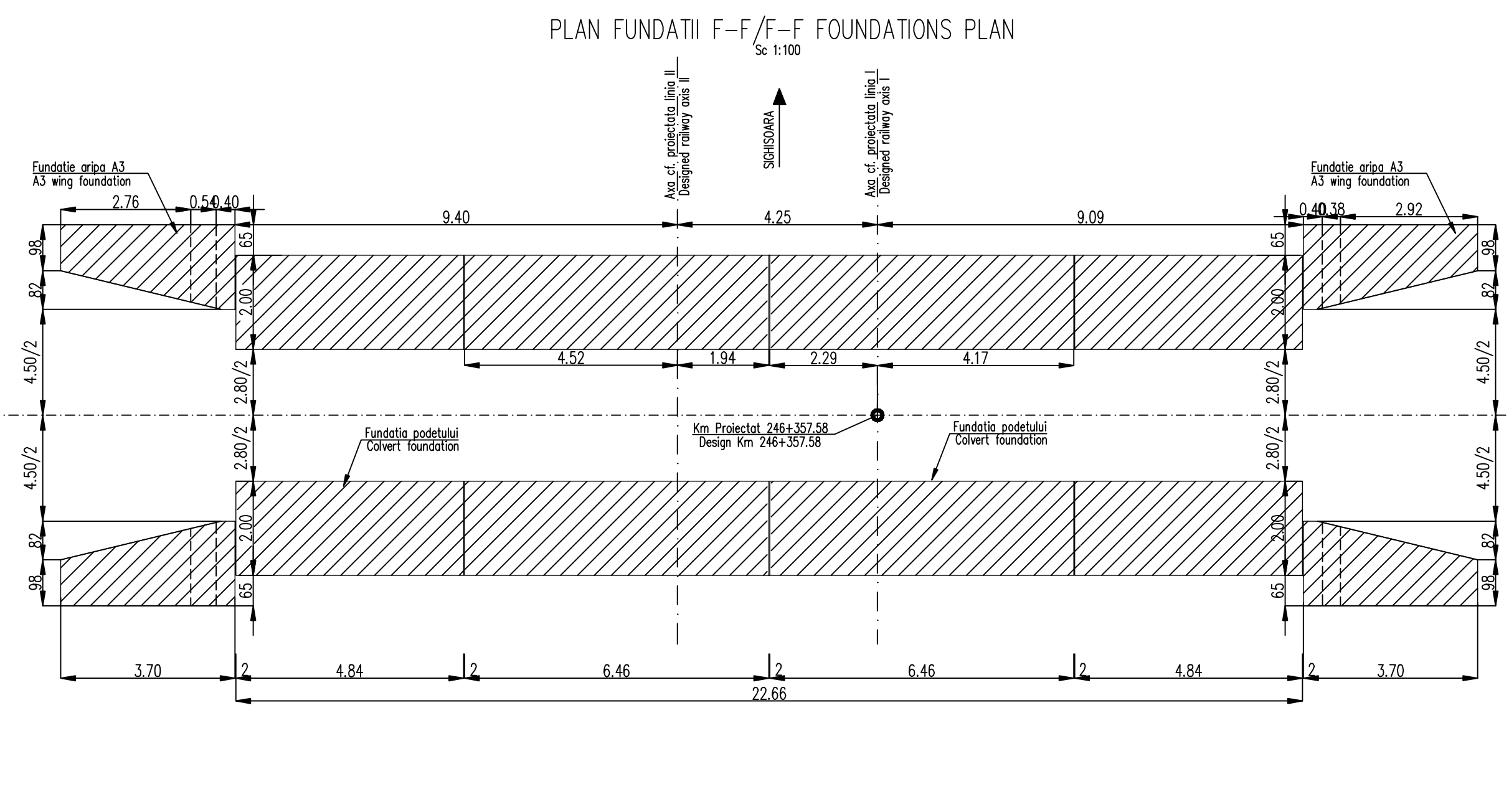
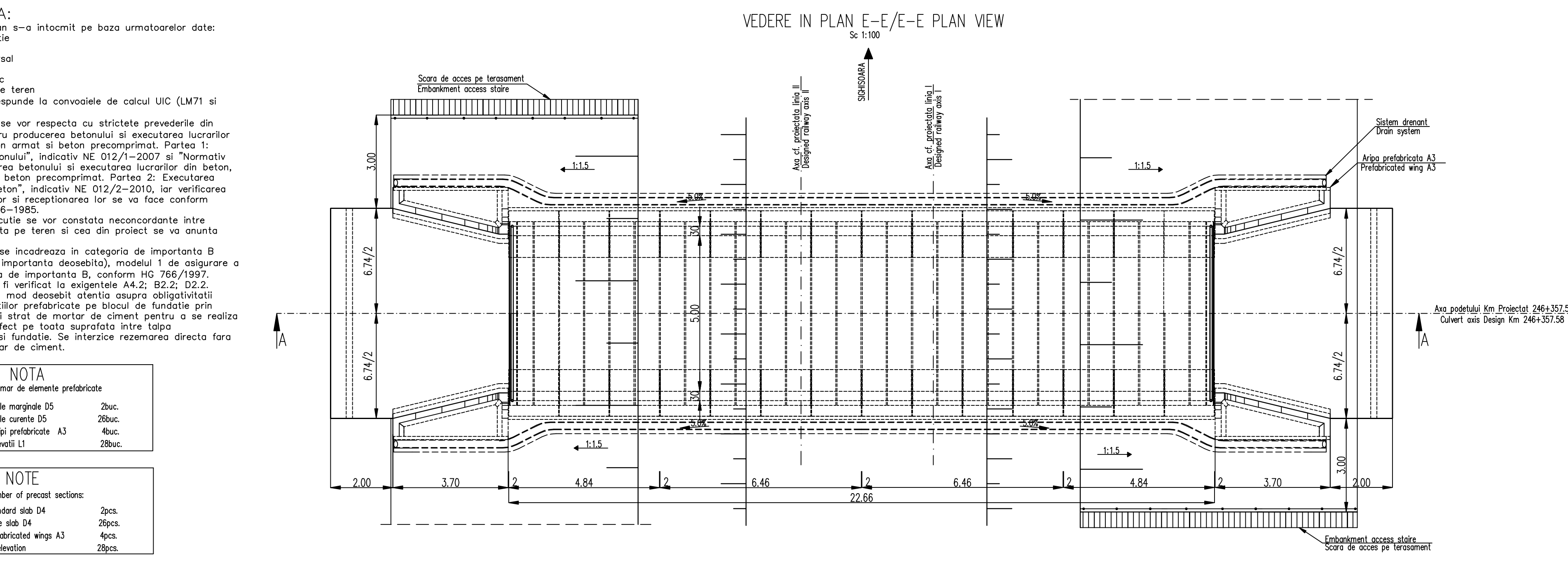


Se interzice copierea, difuzarea, imprimarea sau utilizarea in alte scopuri fara permisiunea ARES LIDER COMPANY sa proiectantilor de desenati. This drawing is forbidden to be copied, lent or used in other purposes than those previously approved by ARES LIDER COMPANY as its owner.



550.00 m. Plan de referinta/Reference plan

Cota teren Ground Level	500.00
Cota platforma Platform level	500.00
Distanta Distance	49.24



Extras armatura / Statement reinforcing

Poz. / Piece	Denumirea materialului / The denomination of the material	Buc.	Diametru / Diametre	Long. / Long. (cm)	Sectiune / Section		
					kg/ml	kg/buc	kg
P6	Armatura Reinforced steel	20x4	Φ10	1.65	0.617	1.018	81.44
P7	Armatura Reinforced steel	4x4	Φ10	4.90	0.617	3.023	48.40
P8	Armatura Reinforced steel	4x32	Φ10	1.65	0.617	1.018	130.3
P9	Armatura Reinforced steel	4x4	Φ10	6.55	0.617	4.04	64.64
Total partial							324.18
Sudura 2%							6.50
Welding 2%							
TOTAL							331.00

MATERIAL METALIC PENTRU CONFECTIONAREA PARAPETULUI PODETULUI / THE METALLIC MATERIAL TO BUILD PARAPET OF CULVERT

Poz. / Piece	Denumirea materialului / The denomination of the material	Buc.	Section	Long. / Long. (mm)	Sectiune / Section		
					kg/ml	kg/buc	kg
P1	Mana curenta EN 10297 - E275 Handrail	2	70x4	6450	6.51	41.99	83.98
P2	Umplutura EN 10058 Filling	6	38x3,5	1850	2.98	5.51	33.10
P3	Lisa EN 10058 Ledge	6	38x3,5	1850	2.98	5.51	33.10
P4	Stop parapet EN 10297 - E275 Parapet pole	8	70x4	970	6.51	6.32	50.56
P5	Placuta prindere Clamping plate	8	200x20	200	31.40	6.28	50.24
Total partial							250.99
Partially total							250.99
Sudura 2%							5.01
Welding 2%							
TOTAL							255

LEGENDA BETOANELOR UTILIZATA LA PODETE: / LEGEND OF CONCRETES USED FOR CULVERTS:

- Beton in rigla drenurilor, fundatiile steturilor de con si pentru realizarea straturilor suport pentru pereti. / Concrete for the drain gutters, for the foundations of cone quarters and for the support layer of reatment: C 25/30 - CEM II/A - S 32,5 - (XC4+XF3+XA1) - A/C = 0,50 - Dmax32 - Cl 0,20
- Beton de parapet: / Slope concrete: C 25/30 - CEM II/A - S 32,5 - (XF3) - A/C = 0,55 - Dmax16 - Cl 0,20
- Beton in fundatiile podetelor, a elementele de racordare (aripi, pinteii, camere de cadere, stetururi de con, etc), in elevatiile arilor monolite si a camerelor de cadere, in pereti: / Concrete for the foundations of culverts, of connecting elements (wings, breakwaters, water falling chambers, cone quarters etc), for the elevations of monolith wings and of water falling chambers, in reatment: C 25/30 - CEM II/A - S 32,5 - (XF1) - A/C = 0,50 - Dmax32 - Cl 0,20
- Beton in stratul de protectie a hidroizolatiei: / Concrete for the waterproofing protection layer: C 25/30 - CEM II/A - S 32,5 - (XC4+XF3) - A/C = 0,50 - Dmax16 - Cl 0,20
- Beton in elemente prefabricate in general (cadre, bolii, aripi, timpone, L-uri): / Concrete for prefabricated elements generally (frames, arches, wings, tympana, L-shaped elements): C 35/45 - CEM II/A - S 32,5 - (XC4+XF3+XA1) - A/C = 0,50 - Dmax22 - Cl 0,20

NOTE:

- This plan has been drawn up based on the following data:
 - plan de situatie
 - profil in lung
 - Longitudinal Profile
 - Cross-section Profile
 - filea podului
 - Bridge's File
 - Hydraulic determination
 - Field Data
- The culvert corresponds to the UIC determination conveys (LM71 and SW/2).
- The execution will strictly comply with the provisions of "Practice code for the concrete production and works execution, reinforced and pre-stressed concrete - Part 1: Practice code for concrete production" NE 012/1-2007 and "Practice code for the concrete production and works execution, reinforced and pre-stressed concrete - Part 2: The execution of concrete works." NE 012/2-2010, and the quality and the reception of the works shall be made according to Norm C 56-1985.
- If during the execution, discrepancies are found between the existing situation on site and the situation stated in the project, the designer will be noticed.
- The construction has been classified in B category of importance (high important constructions), model 1-ensuring the quality and class of importance B according to C.O. 766/97.
- The project will be checked in order to comply with the A4.2; B2.2; D2.2 requirements.
- Particular attention is drawn on binding prefabricated elevations settlement on block foundation through a layer of cement mortar to achieve a perfect contact over the entire surface between precast and foundation base. Propping is prohibited without direct layer of cement mortar.

NOTA:

- Prezentul plan s-a intocmit pe baza urmatoarelor date:
 - plan de situatie
 - profil in lung
 - Longitudinal Profile
 - Cross-section Profile
 - filea podului
 - Bridge's File
 - Hydraulic determination
 - Field Data
- Podul corespunde la convoltele de calcul UIC (LM71 si SW/2).
- Executia se va realiza in conformanta cu prevederile din "Normativ pentru producerea betonului si executarea lucrarilor din beton, beton armat si beton precomprimat. Partea 1: Producerea betonului", indicativ NE 012/1-2007 si "Normativ pentru producerea betonului si executarea lucrarilor din beton, beton armat si beton precomprimat. Partea 2: Executarea lucrarilor din beton", indicativ NE 012/2-2010, iar verificarea calitatii lucrarilor si receptiunea lor se va face conform normativului C56-1985.
- Daca la executie se vor constata neconcordante intre situatia existenta pe teren si cea din proiect se va anunta proiectantul.
- Construcția se încadrează în categoria de importanță B (construcții de importanță deosebită), modelul 1 de asigurare a calitatii și clasa de importanță B, conform HG 766/1997.
- Proiectul va fi verificat la cerințele A4.2; B2.2; D2.2.
- Se atrage în mod deosebit atenția asupra obligativității rezemării elevațiilor prefabricate pe blocul de fundație prin intermediul unui strat de mortar de ciment pentru a se realiza un contact perfect pe toată suprafața între talpa prefabricatului și fundație. Se interzice rezemarea directă fără strat de mortar de ciment.

DATE HIDRAULICE

-Inaltime de apa in podet: h=0,82m
-Perimetru ud: P=6,64m
-Aria udta: A=4,10m²
-Viteza de curgere apa: V=2,84m/s

HYDRAULIC DATA

-Hydraulic height: h=0.82m
-Wet perimeter: P=6.64m
-Wet surface: A=4.10m²
-Water low speed: V=2.84m/s

NOTE

Number of precast sections:

- Standard slab D4: 2pcs.
- Edge slab D4: 26pcs.
- Prefabricated wings A3: 4pcs.
- L1 elevation: 26pcs.

D					
C					
B					
A	12.2011	Revizua 1		Olar Mihai	
Index	Date	Modificari / Modification	Proiectant / Designer	Aprobat / Approved	Consultant / Consultant

CLIENT / CLIENT

CFR C.N.C.F. "C.F.R." - S.A.

ITALFER GRUPPO FERROVIE DELLO STATO

Scott Wilson

OBERMEYER PLANEN + BERATEN GmbH

TECNIC Consulting Engineers

CONSULTANT / CONSULTANT

Approbat / Approved	Proj. proiect / Project manager	R. Luzzi	Date / Date	Semnat / Signature
Approbat / Approved	Coordonator Seciune 1 / Section 1 Coordinator	V. Galland		
Verificat / Checked	Expert Cheie / Key Expert	C. Kallidromitis		

SUBCONTRACTANT / SUBCONTRACTOR

Approbat / Approved	Responsabil Subcontractant / Subcontractant Responsible	A. Dinulescu Stancu	10.2011	
Intocmit / Elaborated	Proiectant / Designer	Olar Mihai Adrian	10.2011	

Reabilitarea liniei de cale ferata Brasov - Simeria, parte componentă a coridorului IV Pan European, pentru circulația trenurilor cu viteză maximă de 160 km/h, Tronsoanel: Brasov - Sighisoara, component Part of the IV Pan-European Corridor, for the trains circulation with maximum speed of 160 km/h, Section : Brasov - Sighisoara

Proiect/Project 2004/RO/16/PP/PA003
Faza / Phase: P.Th. / T.D.

Denumire desen / Drawing Title :
INTERVAL / SECTION CATA - ARCHITA
PODET Km 246+357.58 - DISPOZITIE GENERALA
CULVERT Km 246+357.58 - GENERAL LAYOUT

Codificare / Codification System	Scale / Scale 1:100	LOT / LOT	Nr. / No 01/01
EA51	01	C	14
PA	PO	05	8
1	002	1	