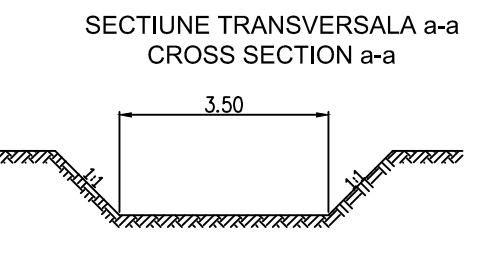


**DATE HIDRAULICE:**  
 -Inaltimea de apa in podet: h=0,73m  
 -Perimetrul udat: P=3,46m  
 -Aria udata: A=1,46m<sup>2</sup>  
 -Viteza de curgere a apei: V=2,67m/s

**HIDRAULIC DATA:**  
 -Hydraulic height: h=0,73m  
 -Perimeter: P=3,46m  
 -surface: A=1,46m<sup>2</sup>  
 -Water flow speed: V=2,67m/s

**NOTA**  
 Numar de elemente prefabricate  
 -Cadre prefabricate C2: 9buc.  
 -Aripi prefabricate A2: 2buc.  
 -Aripi prefabricate A3: 2buc.  
 -Timpane prefabricate T2: 2buc.

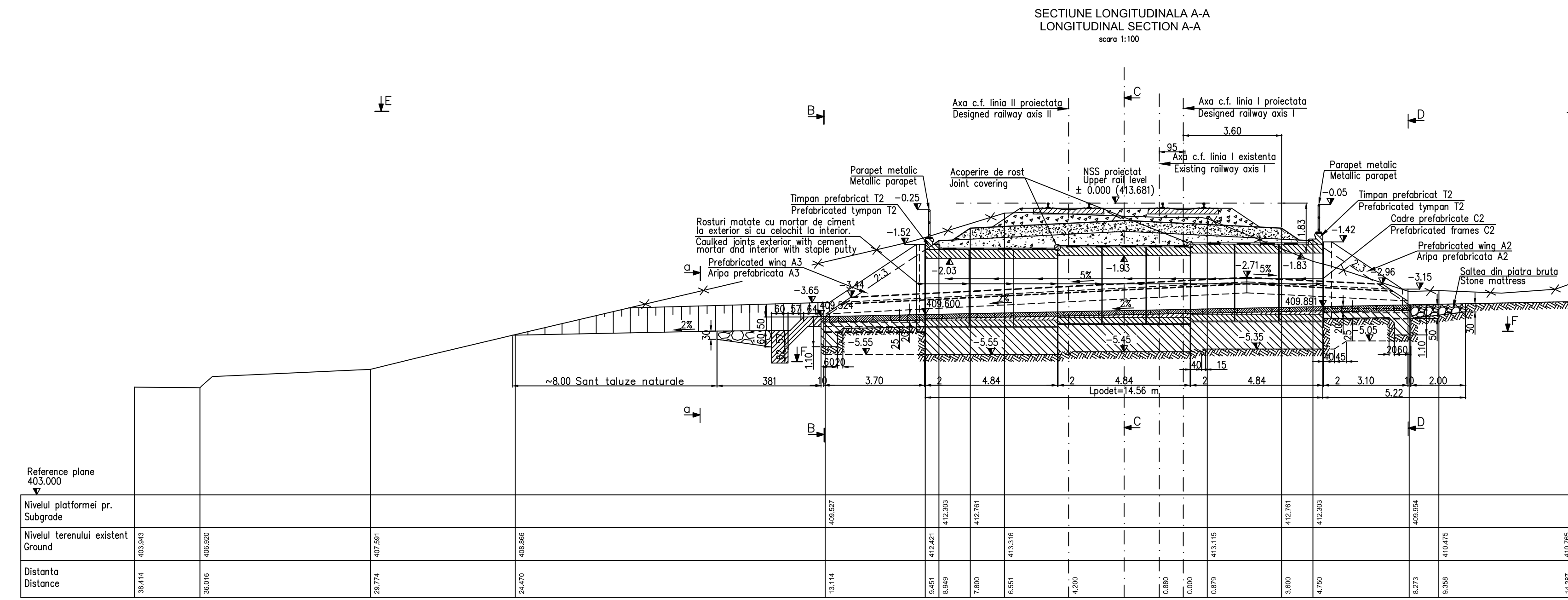
**NOTE**  
 Number of precast section  
 -Prefabricated frames C2: 9pcs.  
 -Prefabricated wings A2: 2pcs.  
 -Prefabricated wings A3: 2pcs.  
 -Head-wall T2: 2pcs.



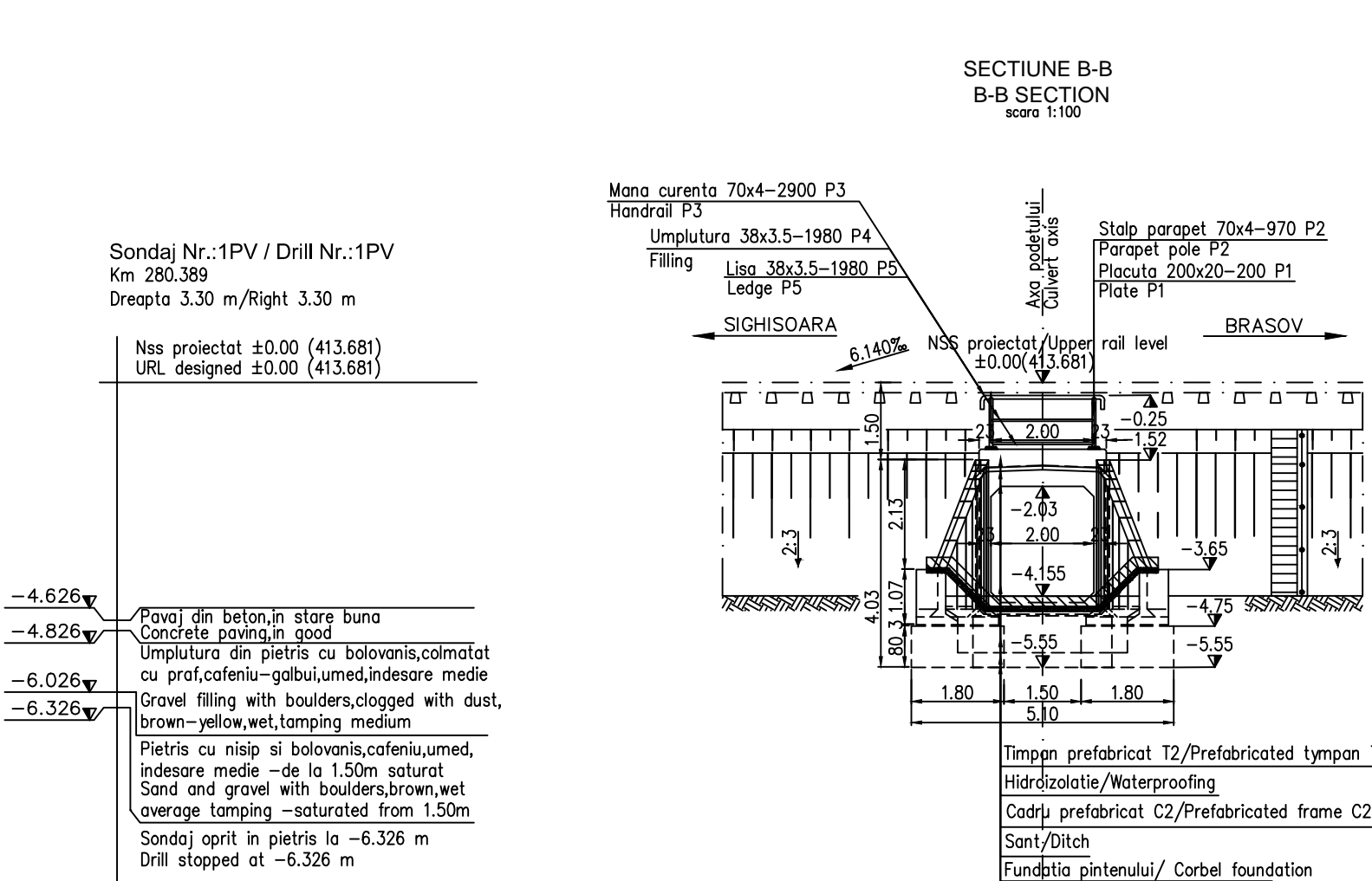
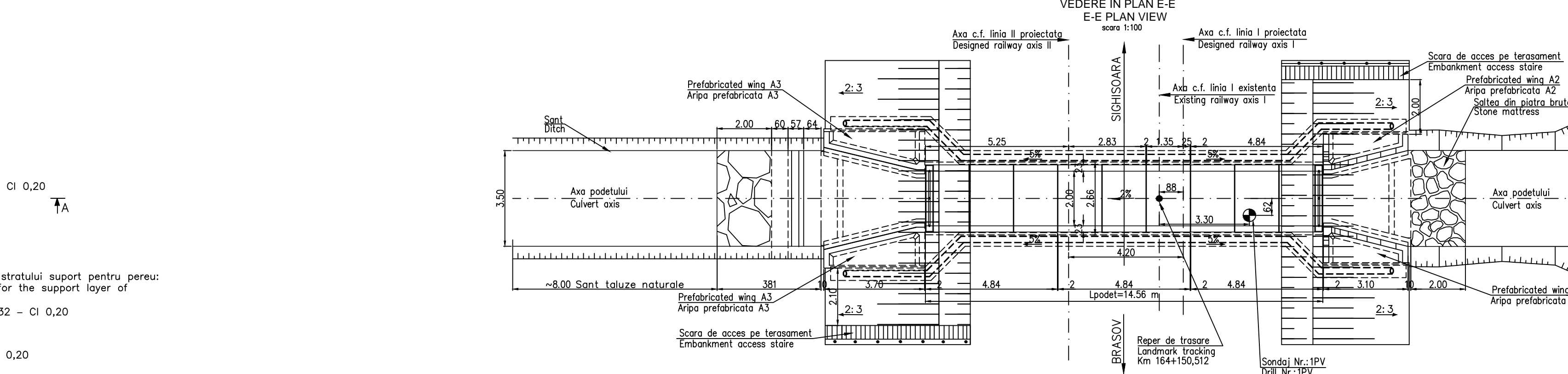
SE INTERZICE COPIEREA, DIFUZAREA, IMPRUMUTAREA SAU UTILIZAREA IN ALTE SCOPURI FARA PERMISIUNEA ALEX LIDER COMPANY SA. PROPRIETAR AL DESENULUI  
 THIS DRAWING IS FORBIDDEN TO BE COPIED, LENT OR USED IN OTHER PURPOSES THAN THOSE PREVIOUSLY APPROVED BY ALEX LIDER COMPANY AS ITS OWNER.

**LEGENDA BETOANELOR CONCRETE LIST**

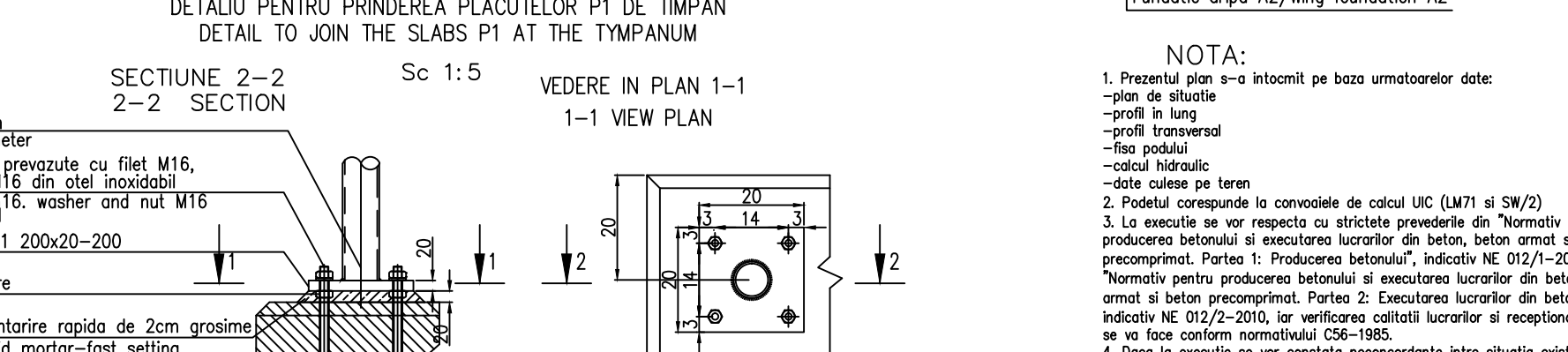
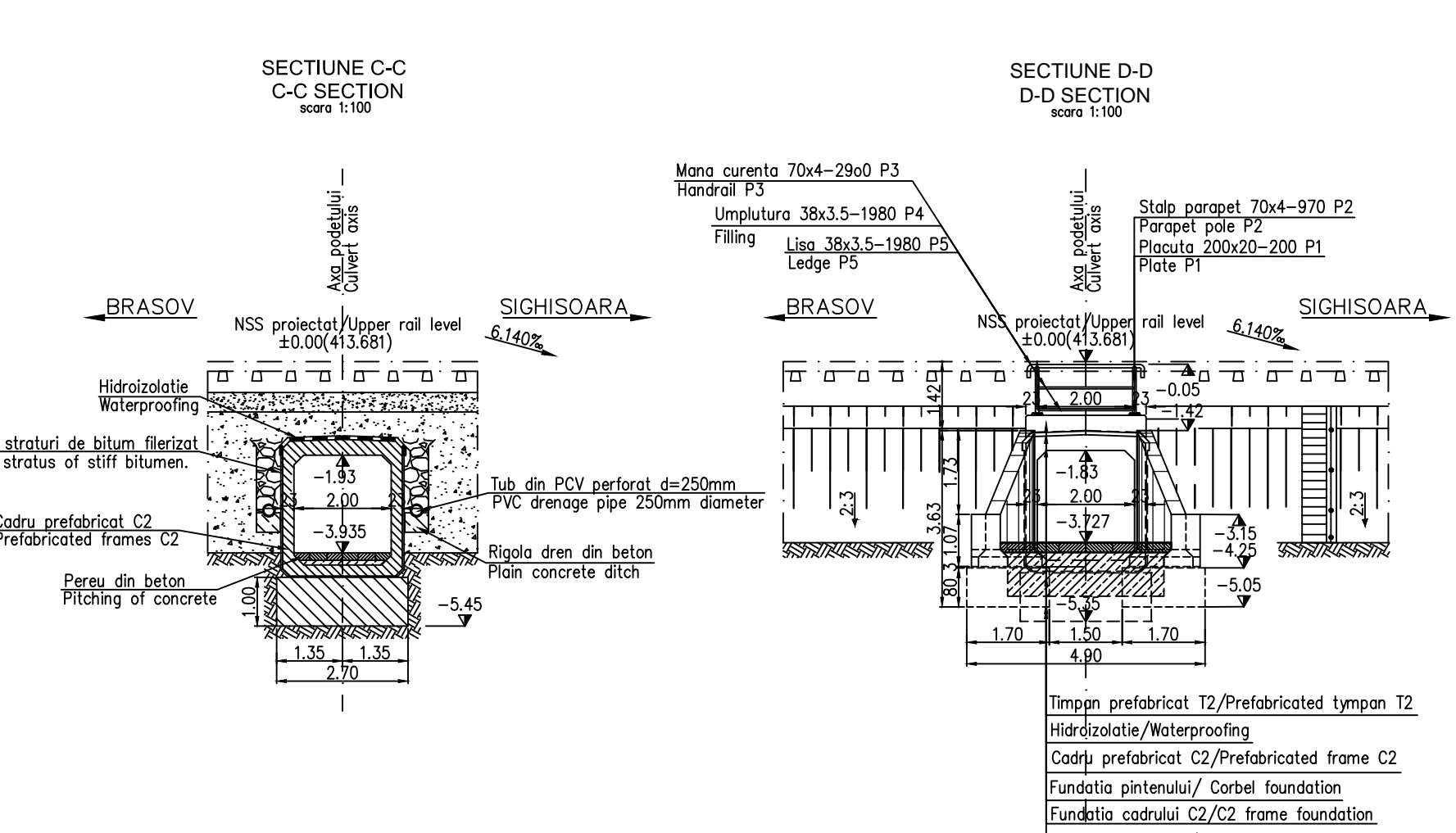
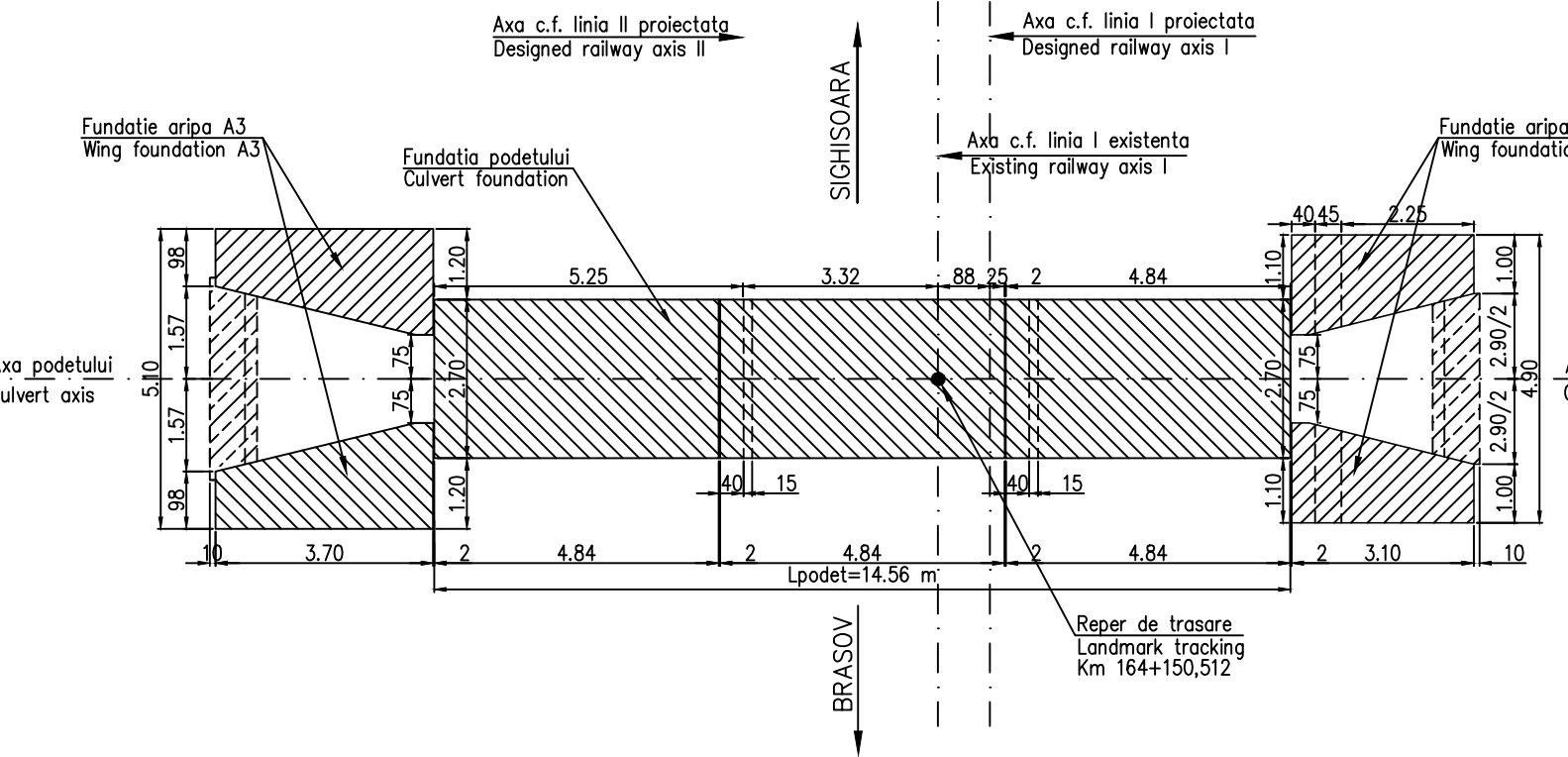
- Beton in elemente prefabricate in general (cadre, aripi, timpane);  
 -Concrete for prefabricated elements generally (frames,wings, tympana),  
 C 35/45 - CEM II/A - S 32,5 - (XC4+XF3+XA1) - A/C = 0,50 - Dmax22 - CI 0,20
- Beton in fundatia podetelor, a elementelor de racordare (aripi, pinteni), in percu  
 Concrete for the foundations of culverts, of connecting elements  
 (wings, breakwaters), in pitching  
 C25/30 - CEM II/A - S 32,5 - (XF1) - A/C=0,50 - Dmax32 - CI 0,20
- Beton in rigola drenurilor, fundatiile sterturilor de con si pentru realizarea stratului suport pentru percu  
 -Concrete for the drain gutters, for the foundations of cone quarters and for the support layer of  
 revetment:  
 C 25/30 - CEM II/A - S 32,5 - (XC4+XF3+XA1) - A/C = 0,50 - Dmax32 - CI 0,20
- Beton in stratul de protectie a hidroizolatiei;  
 -Concrete for the waterproofing protection layer:  
 C 25/30 - CEM II/A - S 32,5 - (XC4+XF3) - A/C = 0,50 - Dmax16 - CI 0,20



Reference plane	403.000	402.927	402.854	402.781	402.708	402.635	402.562	402.489	402.416	402.343	402.270	402.197	402.124	402.051	401.978	401.905	401.832	401.759	
Nivelul platformei pr. Subgrade																			
Nivelul terenului existent Ground	403.000	402.927	402.854	402.781	402.708	402.635	402.562	402.489	402.416	402.343	402.270	402.197	402.124	402.051	401.978	401.905	401.832	401.759	
Distanța Distance	30,671	30,671	29,774	407,091	15,316	9,841	9,841	412,027	412,003	412,201	412,201	412,201	412,201	412,201	412,201	412,201	412,201	412,201	412,201



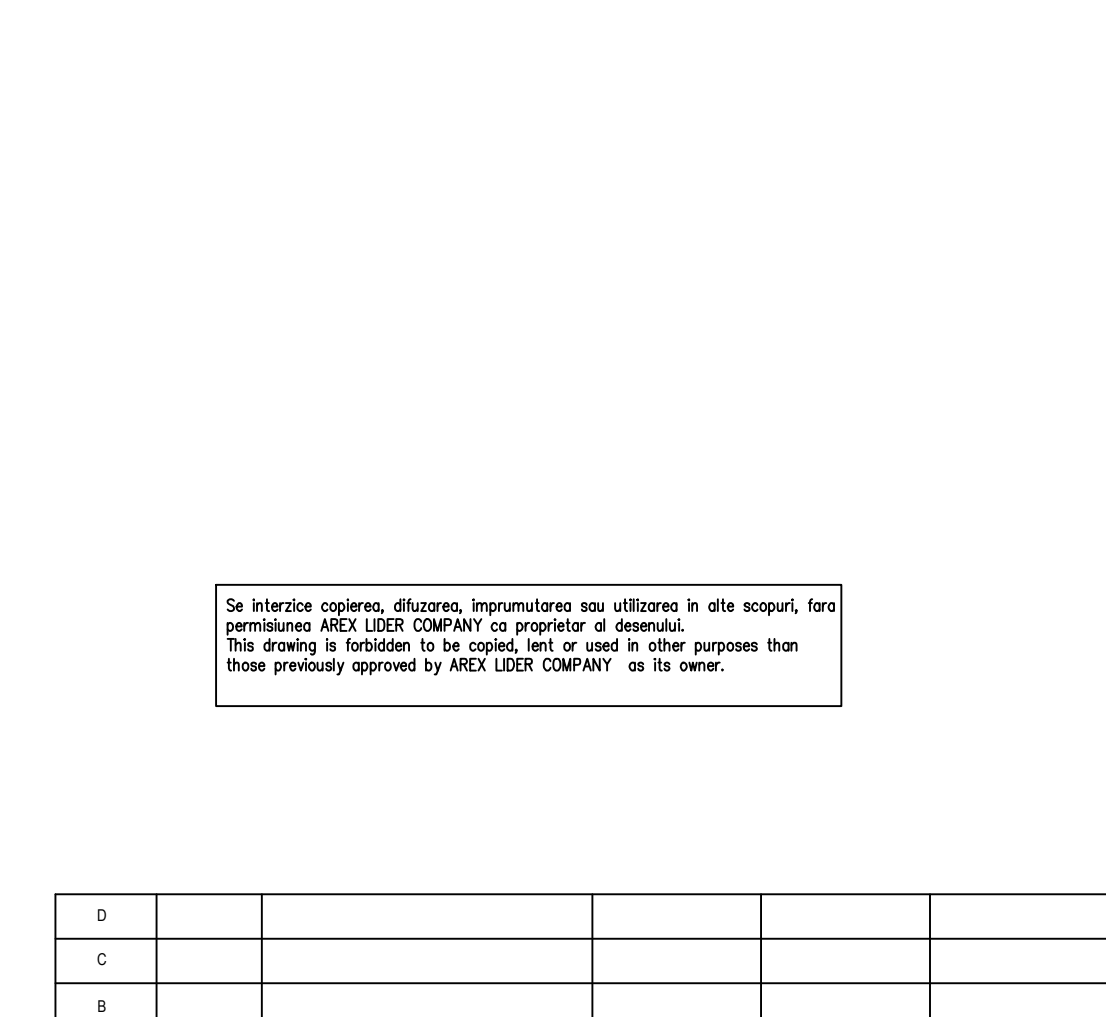
**PLANUL FUNDATIILOR F-F F-F FOUNDATION PLAN**



**MATERIAL METALIC PENTRU CONFECTIONAREA PARAPETULUI PODETULUI THE METALLIC MATERIAL TO BUILD PARAPET OF CULVERT**

Denumirea materialului / the denomination of the material	Buc.	Section Section	Lung. Long. (mm)	kg/m <sup>3</sup>	kg/buc	kg
P1 Placuta prindere / Clamping plate	4	200x20	200	31,40	6,28	25,12
P2 Stalp parapet EN 10297 - E275 / Parapet pole	4	70x4	970	6,51	6,32	25,26
P3 Mana curenta EN 10297 - E275 / Handrail	2	70x4	2900	6,51	18,88	37,76
P4 Umplutura EN 10258 / Filling	2	38x3,5	1980	2,98	5,90	11,80
P5 Lis EN 10258 / Ledge	2	38x3,5	1980	2,98	5,90	11,80
Total partial / Partially total						111,74
Welding 2%						2,24
TOTAL						115

**NOTA:**  
 1. This plan has been drawn up based on the following data:  
 -plan de situatie  
 -profil in lung  
 -profil transversal  
 -fisa podetului  
 -datele culese pe teren  
 2. Pozele corespund la proiectele A4.2, B2.2, D2.2.  
 3. La executie sa se respecte cu strictete prevederile din "Normele pentru producerea betonului si executarea lucrarilor din beton, beton armat si beton precomprimat. Partea 1: Producerea betonului", indicativ NE 012/1-2007 si "Normele pentru producerea betonului si executarea lucrarilor din beton, beton armat si beton precomprimat. Partea 2: Executarea lucrarilor din beton", indicativ NE 012/2-2010, iar verificarea calitatii lucrarilor si reconditionarea lor sa se faca conform normativului CDE-1995.  
 4. Daca la executie sa vor constata neconcordante intre situatia existenta pe teren si cea din proiect sa se acorde proiectului.  
 5. Constructia se incadreaza in categoria de importanta B (constructii de importanta deosebita), modul 1 de asigurare a calitatii si clasei de importanta B, conform HG 766/1997.  
 6. Proiectul va fi verificat la executie A4.2, B2.2, D2.2.  
 7. Se atrage in mod deosebit atentie asupra obligativitatii rezervarii elevatilor prefabricate pe blocul de fundatie prin intermediul unui strat de mortar de ciment pentru a se realiza un contact perfect pe toata suprafata linie talpa prefabricatului si fundatiei. Se interzice rezervarea directa fara strat de mortar de ciment.  
 NOTE:  
 1. This plan has been drawn up based on the following data:  
 -Longitudinal Profile  
 -Cross-section Profile  
 -Bridge's File  
 -Hydraulic determination  
 -Field Data  
 2. The culvert corresponds to the UIC determination conveyors (M71 and S8/2).  
 3. The execution will strictly comply with the provisions of "Practice code for the concrete production and works execution, reinforced and pre-stressed concrete - Part 1: Practice code for concrete production" NE 012/1-2007 and "Practice code for the concrete production and works execution, reinforced and pre-stressed concrete - Part 2: The execution of concrete works" NE 012/2-2010, and the quality and the reception of the works shall be made accordingly to Norm C 86-1985.  
 4. If during the execution, discrepancies are found between the existing situation on site and the situation stated in the project, the designer will be notified.  
 5. The construction has been classified in B category of importance (high important construction), model 1-ensuring the quality and class of importance B according to C.O. 766/97.  
 6. The project will be checked in order to comply with the A4.2, B2.2, D2.2 requirements.  
 7. Particular attention is drawn on binding prefabricated elements settlement on block foundation through a layer of cement mortar to achieve a perfect contact over the entire surface between precast and foundation base. Propping is prohibited without direct layer of cement mortar.



**INDEX**

Index	Date	Modificari / Modifications	Proiectant / Designer	Aprobat Consultant / Approved Consultant	Aprobat CFR / Approved CFR
A	12.2011	Revizia 1	Mihai Ady Nicolae		

**CLIENT / CLIENT**  
 GUVERNUL ROMANIEI / ROMANIAN GOVERNMENT  
 OMANIAN GOVERNMENT  
 EUROPEAN UNION FINANCED PROJECT

**CONSULTANT / CONSULTANT**  
 TALPORA  
 Wilson  
 OBERMEYER  
 PLANEN + BEUTEN GmbH  
 TECNIC Consulting Engineers

**SUBCONTRACTANT / SUBCONTRACTOR**

Approved	Responsible Subcontractant	Date	Signature
Approved	A. Divulescu Stanciu	08.2011	
Elaborated	Designer	08.2011	

**Rehabilitarea liniei de cale ferata Brasov - Simeria, parte componenta a coridorului IV Pan-European, pentru circulatia trenurilor cu viteza maxima de 160 km/h, Tronsoanel: Brasov - Sighisoara**

**Interval / SECTION : ARCHITA - VANATORI**  
**PODET - KM 264+150,512 / KM 264+150,512 -CULVERT**  
**DISPOZITIE GENERALA / GENERAL DISPOSITION**

**Code / Codification System**

E	A	S	1	0	1	C	1	6	P	A	P	O	0	8	2	1	0	0	2	1
---	---	---	---	---	---	---	---	---	---	---	---	---	---	---	---	---	---	---	---	---

**Scale / Scala**  
 1:50, 1:5  
**LOT / LOT**  
 01/01