

NOTA
 -Numar de elemente prefabricate
 -Date marginale D4: -2buc.
 -Date curente D4: -12buc.
 -Aripi prefabricate A1: -2buc.
 -Elevatii L2: -14buc.

NOTE
 -Number of precast sections:
 -Precast end tile D4: -2pcs.
 -Precast tile D4: -12pcs.
 -Precast wingwall A1: -2buc.
 -Elevations L2: -14pcs.

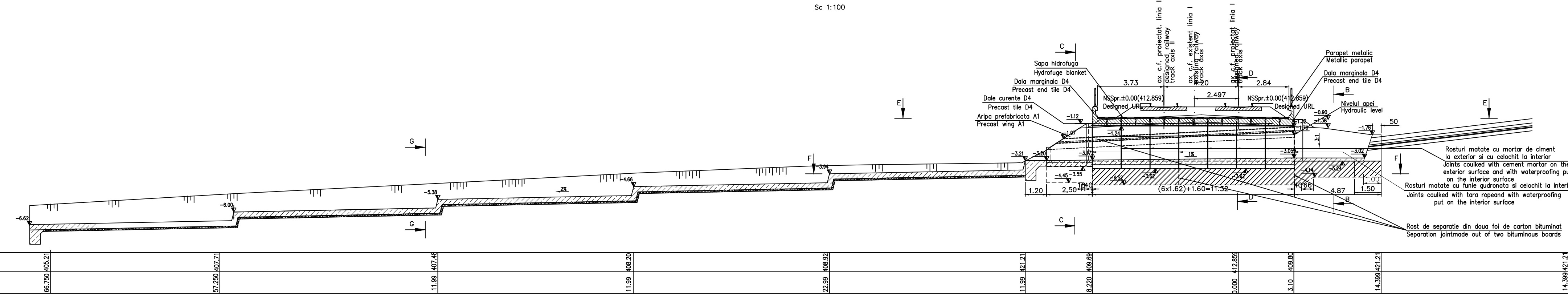
DATE HIDRAULICE
 -Inaltimea de apa in podet=1.30m
 -Perimetru udut: P=6.60m
 -Arie: A=5.20m²
 -V. curente apa: V=3.58mc/s

HYDRAULIC DATA
 -Hydraulic height: h=1.30m
 -Perimeter: P=6.60m
 -Surface: A= 5.20m²
 -Water low speed: V=3.58mc/s

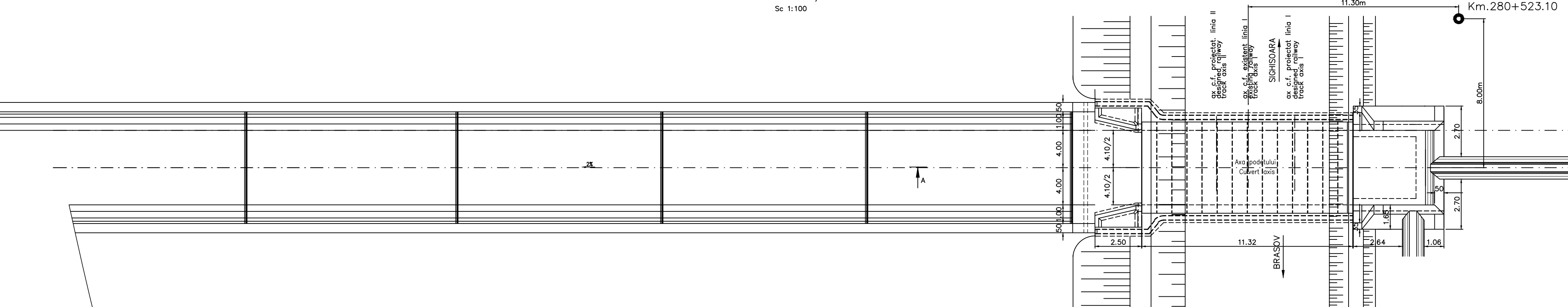
Cota de referinta 404.50m

Cota teren	75.250/407.71	66.750/405.21	57.250/407.71	11.59/406.20	22.59/408.90	11.59/406.20	20.00/422.850	3.10/408.90	14.399/421.21
Distanțe cumulate									

SECTIUNE LONGITUDINALA A-A / LONGITUDINAL SECTION A-A
 Sc 1:100



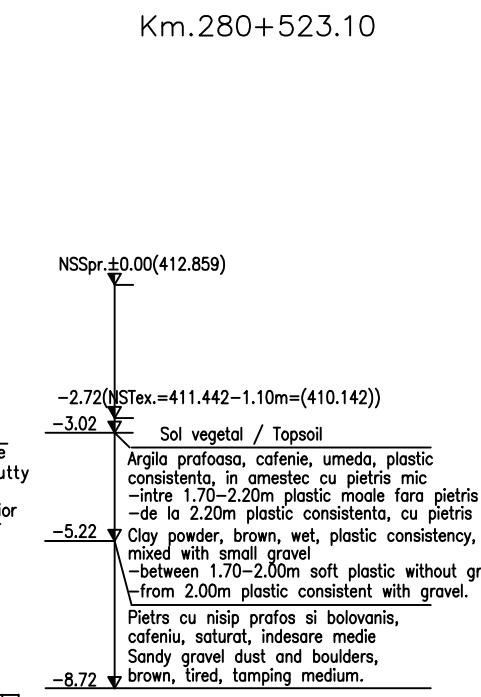
VEDERE IN PLAN E-E / PLAN VIEW E-E
 Sc 1:100



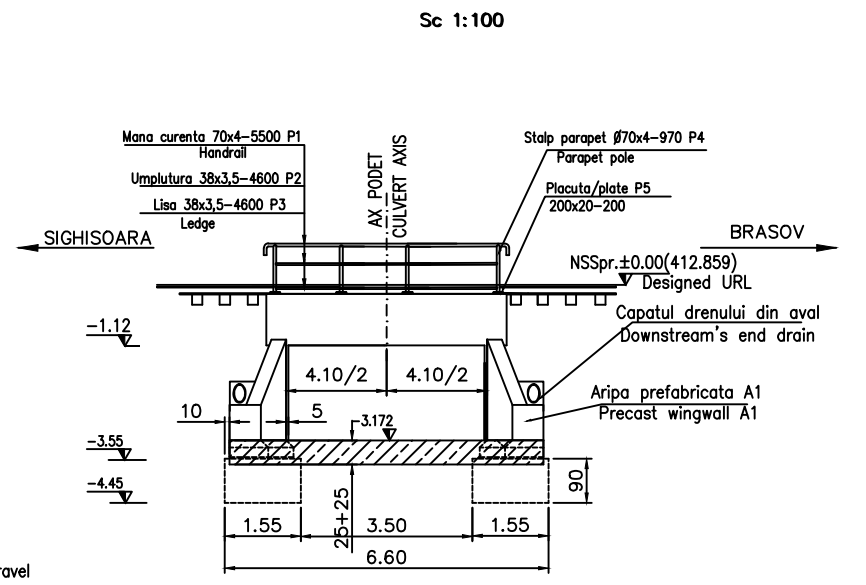
LEGENDA BETOANELOR CONCRETE LIST

- Beton in elemente prefabricate in general (cadre, aripi, timpane); Concrete for prefabricated elements generally (frames, wings, tympana); C 35/45 - CEM II/A - S 32,5 - (XC4+XF3+XA1) - A/C = 0,50 - Dmax22 - Cl 0,20
- Beton in fundatia podetelor, a elementelor de racordare (aripi, pinteți), in peruu Concrete for the foundations of culverts, of connecting elements (wings, breakwaters), in pitching; C25/30-CEM II/A-S 32,5-(XF1)-A/C=0,50-Dmax32-Cl0,20
- Beton in rigola drenurilor, fundatiile sferturilor de con si pentru realizarea stratului suport pentru peruu; Concrete for the drain gutters, for the foundations of cone quarters and for the support layer of revetment; C 25/30 - CEM II/A - S 32,5 - (XC4+XF3+XA1) - A/C = 0,50 - Dmax32 - Cl 0,20
- Beton in stratul de protectie a hidroizolatiei; Concrete for the waterproofing protection layer; C 25/30 - CEM II/A - S 32,5 - (XC4+XF3) - A/C = 0,50 - Dmax16 - Cl 0,20

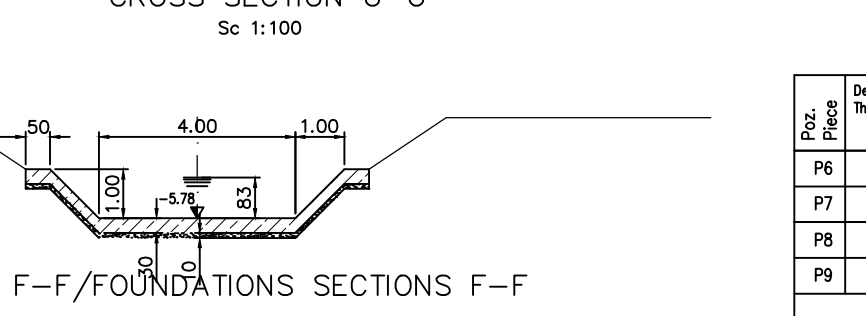
SONDAJ/DRILL nr.3FØ8"
 Km.280+523.10



VEDERE DIN AVAL C-C / DOWNSTREAM VIEW C-C
 Sc 1:100



SECTIUNE TRANSVERSALA G-G
 CROSS SECTION G-G
 Sc 1:100



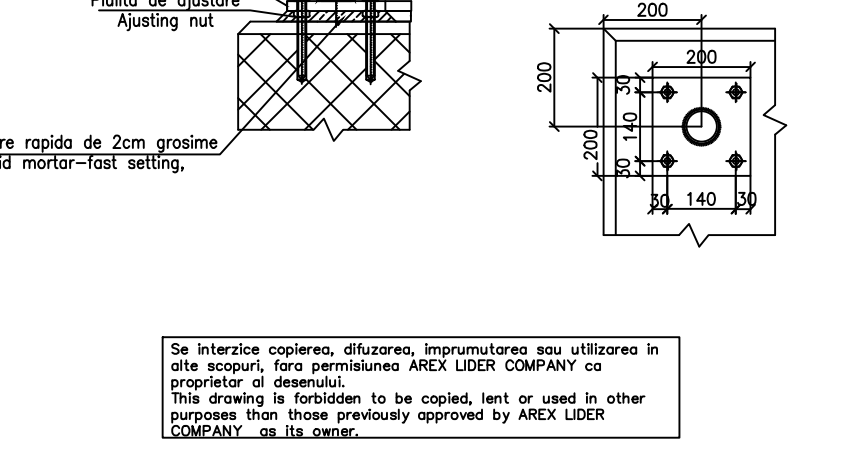
Extras armatura / Statement reinforcing

Poz. / Piece	Denumirea materialului / The denomination of the material	Buc.	Diarmetru / Diametre	Lung. / Long.	kg/ml	kg/buc	kg
P6	Armatura Reinforced steel	23x2	Ø10	1.65	0.617	1.018	46.80
P7	Armatura Reinforced steel	4x2	Ø10	4.90	0.617	3.02	24.20
P8	Armatura Reinforced steel	32x2	Ø10	1.65	0.617	1.018	65.20
P9	Armatura Reinforced steel	4x2	Ø10	6.50	0.617	4.01	32.10
Total partial							168.30
Partially total							3.40
TOTAL							172.00

NOTA:
 1. Prezenta plan s-a intocmit pe baza urmatoarelor date:
 -plan de situatie
 -profil in lung
 -profil transversal
 -fișa podului
 -date hidraulice
 -date cote pe teren
 2. Podetul corespunde la convazile de calciu UIC (LM71 si SW/2)
 3. Executia va respecta cu strictete prevederile din "Normativ pentru producerea betonului si executarea lucrarilor din beton, beton armat si beton precomprimat. Partea 1: Producerea betonului", indicativ NE 012/1-2007 si "Normativ pentru producerea betonului si executarea lucrarilor din beton, beton armat si beton precomprimat. Partea 2: Executarea lucrarilor din beton", indicativ NE 012/2-2010, iar verificarea calitatii lucrarilor si receptorilor for se va face conform normativului CS6-1985.
 4. Daca la executie se vor constata neconcordante intre situatia existenta pe teren si cea din proiect se va anunta proiectantul.
 5. Constructiile de importanta deosebita, modelul 1 de asigurare a calitatii si clasa de importanta B, conform HG 786/1997.
 6. Proiectul va fi verificat si sigilat de A4.2; B2.2; D2.2.
 7. Se atrage in mod deosebit atentia asupra obligativitatii rezanarii elevatiilor prefabricate pe blocul de fundatie prin intermediul unui strat de mortar de ciment pentru a se realiza un contact perfect pe toata suprafata intre talpa prefabricatului si fundatie. Se interzice reazemarea directa fara strat de mortar de ciment.
 8. Proiectul va fi verificat si sigilat de A4.2; B2.2; D2.2.

NOTE:
 1. This plan has been drawn up based on the following data:
 -Lay-out Plan
 -Longitudinal Profile
 -Cross-section Profile
 -Bridge's File
 -Hydraulic determination
 -Field Data
 2. The culvert corresponds to the UIC determination convays (LM71 and SW/2).
 3. The execution will strictly comply with the provisions of "Practice code for the concrete production and works execution, reinforced and pre-stressed concrete - Part 1: Practice code for concrete production" NE 012/1-2007 and "Practice code for the concrete production and works execution, reinforced and pre-stressed concrete - Part 2: The execution of concrete works" NE 012/2-2010, and the quality and the reception of the works shall be made according to Norm C 56-1985.
 4. If during the execution, discrepancies are found between the existing situation on site and the situation stated in the project, the designer will be notified.
 5. The construction has been classified in B category of importance (high important constructions), model 1-ensuring the quality and class of importance B according to O.G. 786/97.
 6. The project will be checked in order to comply with the A4.2; B2.2; D2.2 requirements.
 7. Particular attention is drawn on binding prefabricated elevations settlement on block foundation through a layer of cement mortar to achieve a perfect contact over the entire surface between precast and foundation base. Propping is prohibited without direct layer of cement mortar.

DETALIU DE PARAPET
 PARAPET DETAIL
 Teava Ø70mm
 Pipe 70mm diameter
 Suruburi chimice prevazute cu filet M16, șoabi si piulițe M16 din oțel inoxidabil
 Chemical bolts m16, washer and nut M16 on stainless steel
 Placa de baza 200x20-200
 Base plate 200x20-200
 Baza
 Base
 Plăcuță
 Gasket
 Ajustare
 Adjusting nut
 DETALIU PENTRU PRINDEREA PLACUTELOR P1 DE TIMPAN
 DETAIL TO JOIN THE SLABS P1 AT THE TYMPANUM
 Scara 1:5
 VEDERE IN PLAN
 VIEW PLAN



MATERIAL METALIC PENTRU CONFECTIONAREA PARAPETULUI PODETULUI
 THE METALLIC MATERIAL TO BUILD PARAPET OF CULVERT

Denumirea materialului / The denomination of the material	Buc.	Section / Section	Lung. / Long. (mm)	kg/ml	kg/buc	kg	
P1 Mono curenti EN 10297 - E275	2	70x4	5450	6.51	35.47	70.96	
P2 Umplutura EN 10058	6	38x3,5	1550	2.98	4.62	27.71	
P3 Lina EN 10058	6	38x3,5	1550	2.98	4.62	27.71	
P4 Slip parapet EN 10297 - E275	8	70x4	970	6.51	6.32	50.56	
P5 Placuta prevazuta cu file	8	200x20	200	31.40	6.28	50.24	
Total partial							227.20
Partially total							4.54
TOTAL							232

D					
C					
B					
A	12.2011	Revizua 1	Ioani Rentea	Aprobat Consultant	Aprobat CFR
Index	Date	Modificari/Revisiuni	Proiectant	Aprobat Consultant	Aprobat CFR

GUVERNUL ROMANIEI
 ROMANIAN GOVERNMENT
 PROIECT FINANȚAT DE UNIUNEA EUROPEANĂ
 EUROPEAN UNION FINANCED PROJECT
 C.N.C.F. "C.F.R." - S.A.

CLIENT / CLIENT

CONSULTANT / CONSULTANT

Approbat / Approved	Șef proiect / Project manager	R. Luțuș	Data / Date	07.2011	Semnatura / Signature
Approbat / Approved	Coordonator Secțiune / Section 1 Coordinator	C. Gambelli			
Verificat / Checked	Expert Chief / Key Expert	V. Kallidromis			

SUBCONTRACTANT / SUBCONTRACTOR

Approbat / Approved	Responsabil Subcontractant / Subcontractant Responsible	A. Dinulescu Stancu	Data / Date	07.2011	Semnatura / Signature
Intocmit / Elaborated	Proiectant / Designer	Ioani Rentea		08.2011	

Restabilirea liniei de cale ferată Brașov - Simeria, parte componentă a coridorului IV Pan-European, pentru circulația trenurilor cu viteză maximă de 160 km/h.
 Transonul: Brașov - Sighișoara
 Rehabilitation of the railway line Brașov - Simeria, component Part of the IV Pan-European Corridor, for the trains circulation with maximum speed of 160 km/h.
 Section: Brașov - Sighișoara
 Denumire desen / Drawing Title
 INTERVAL / SECTION: ARCHITA - VANATORI
 PODET - KM 264+284,472 / KM 264+284,472 -CULTUR
 DISPOZITIE GENERALA / GENERAL LAYOUT
 Codificare / Codification System
 Scara / Scale
 LOT / LOT
 Nr. / No
 01 / 01