

NOTA
 Numar de elemente prefabricate
 -Cadre C2 : 12buc.
 -Aripi prefabricate A2: 4buc.
 -Timpane prefabricate: 2buc.

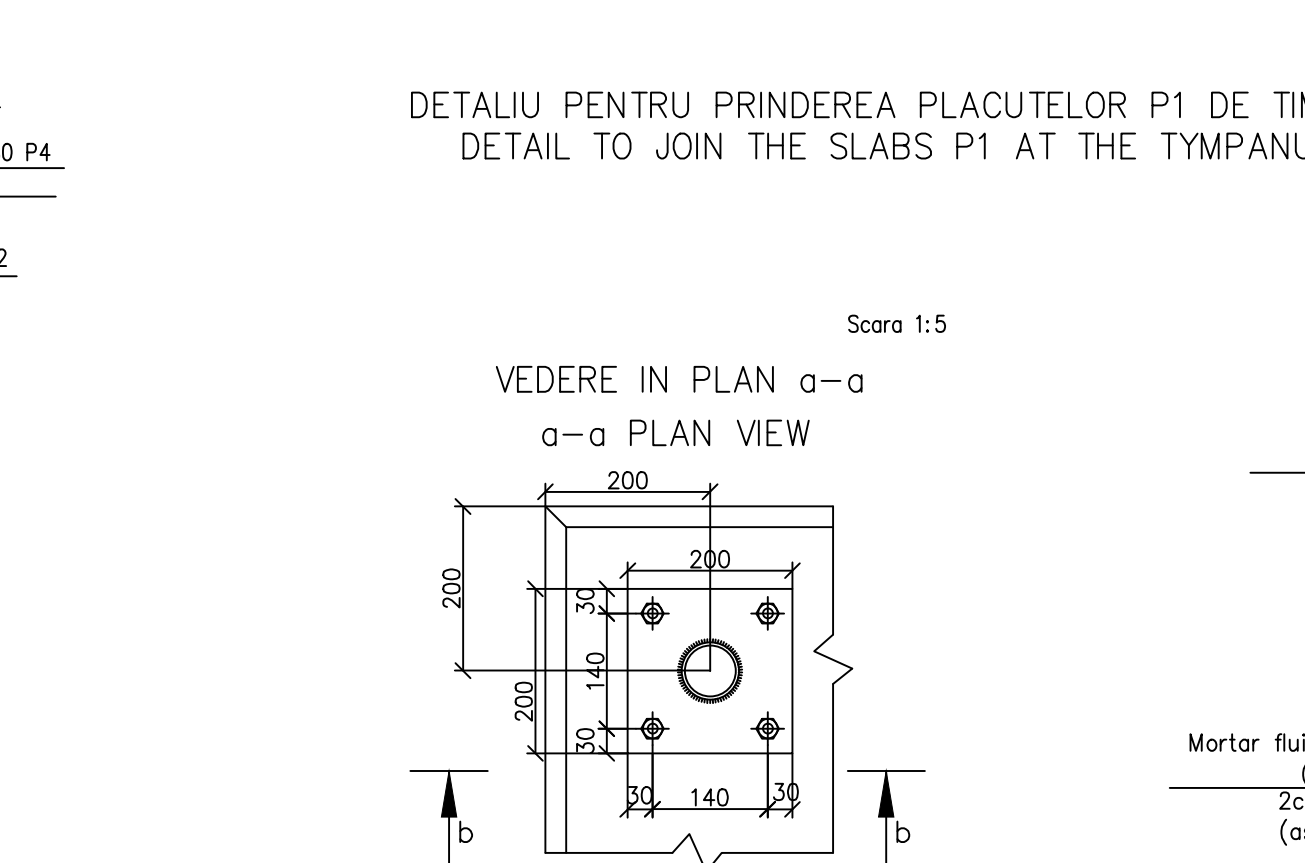
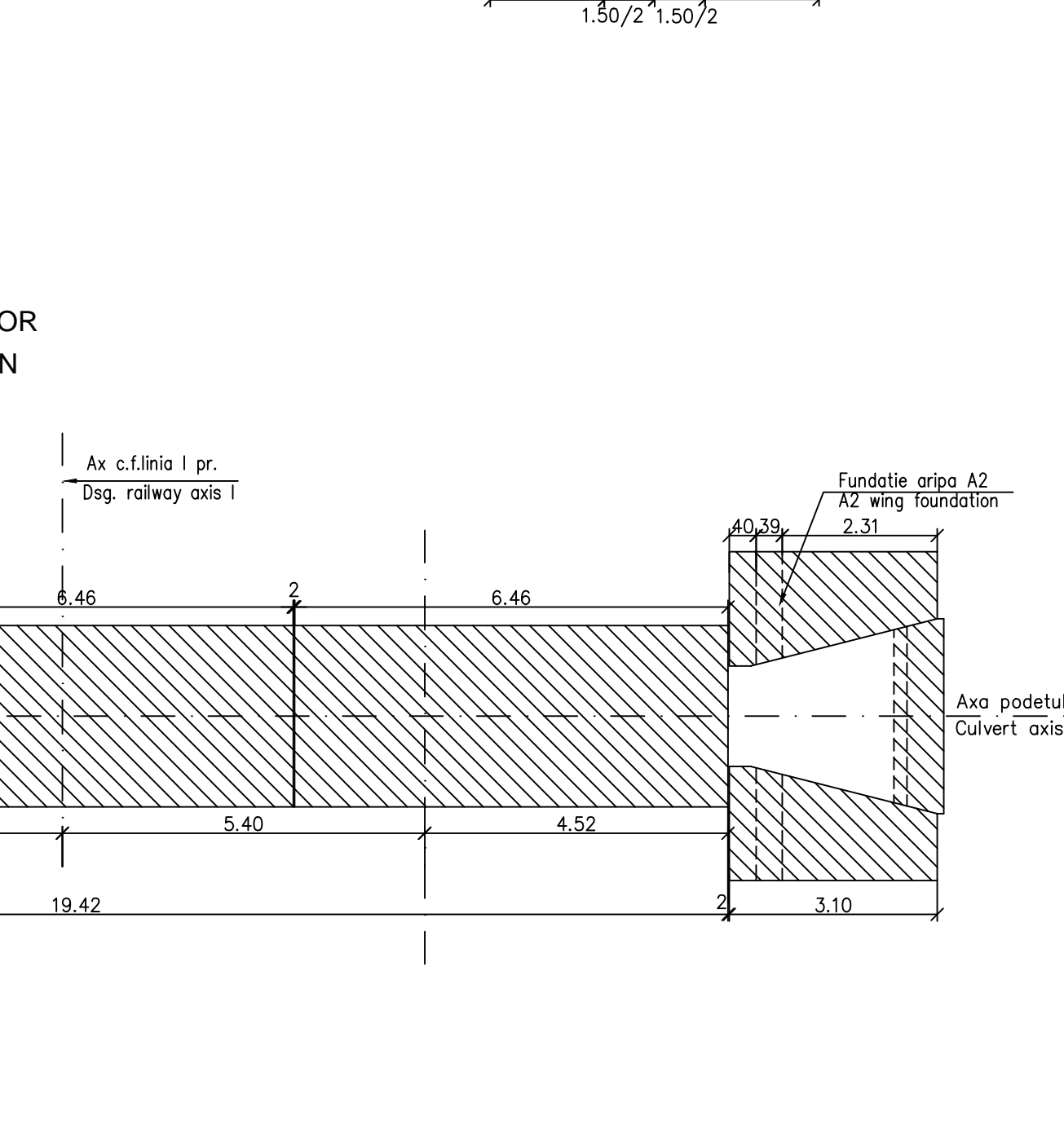
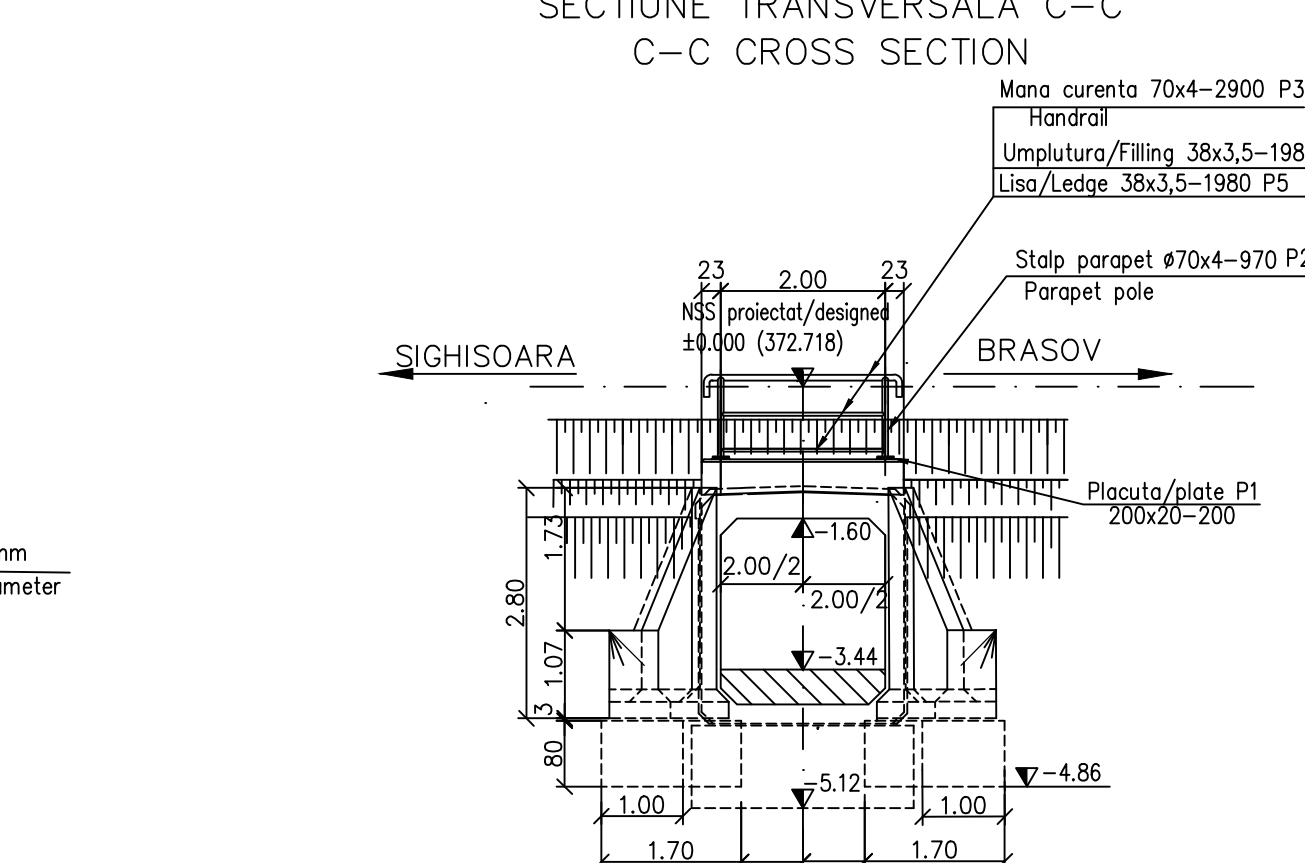
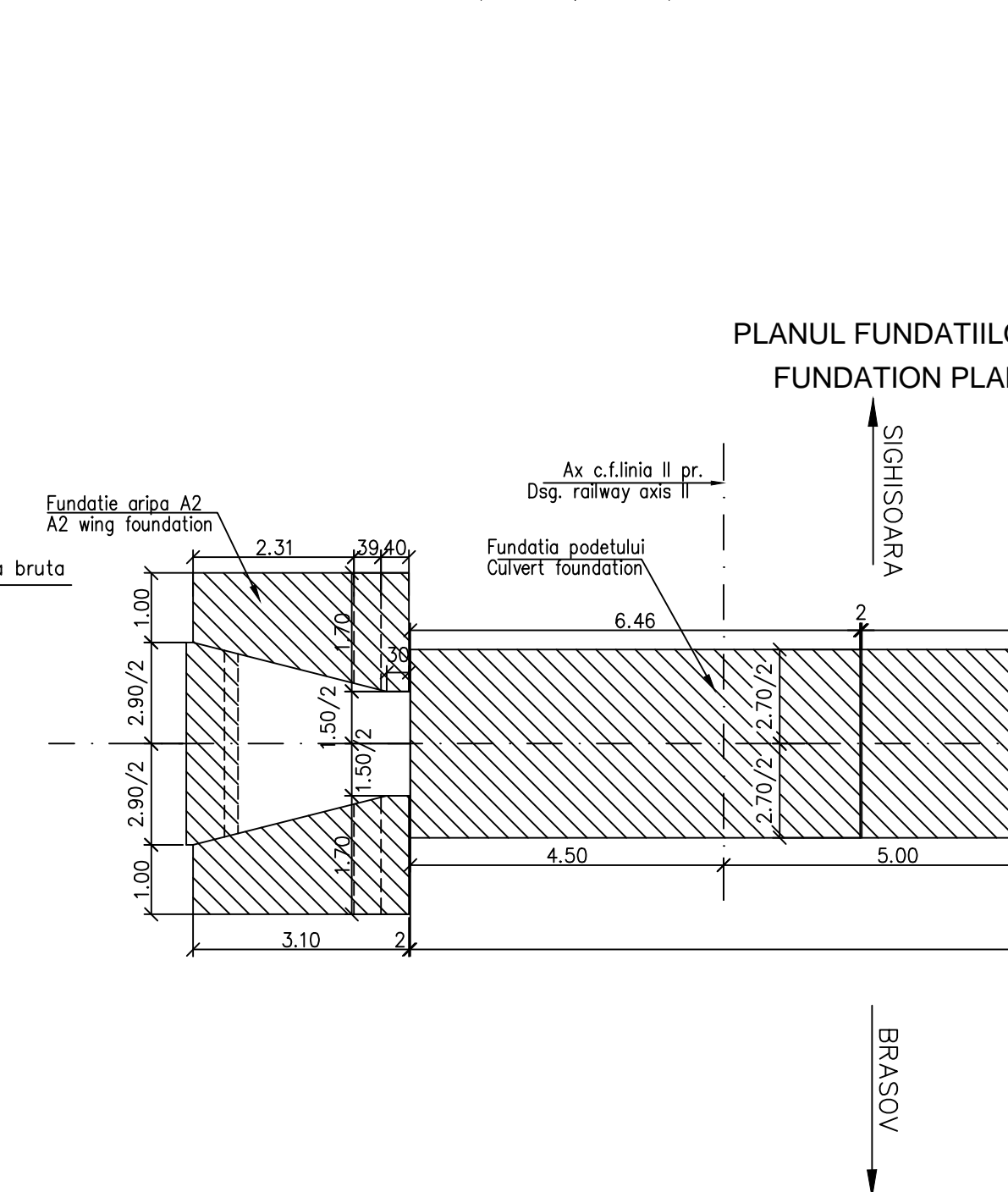
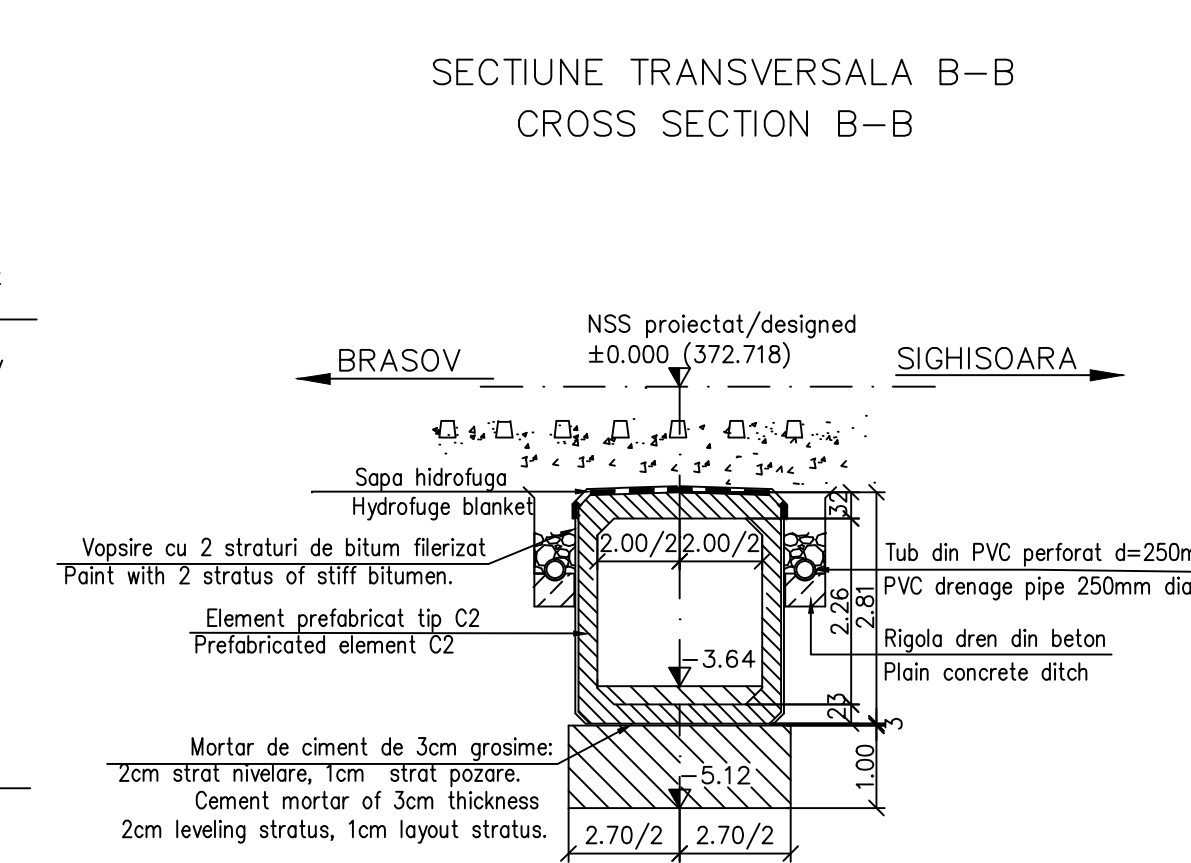
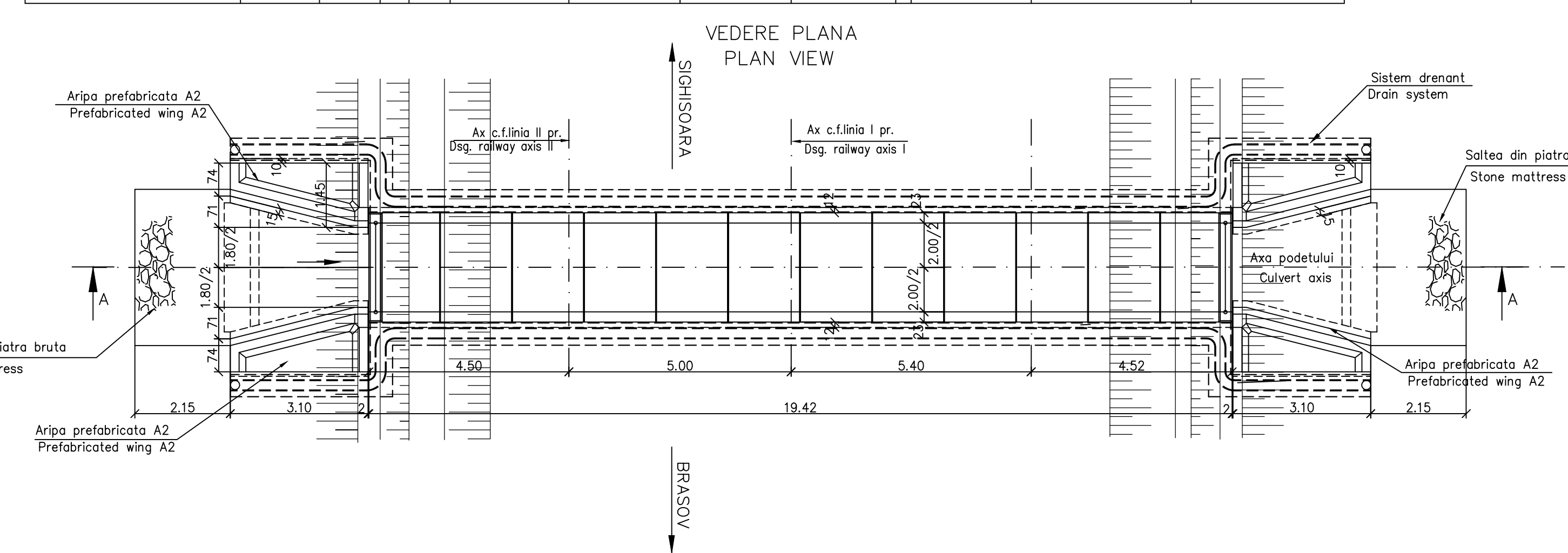
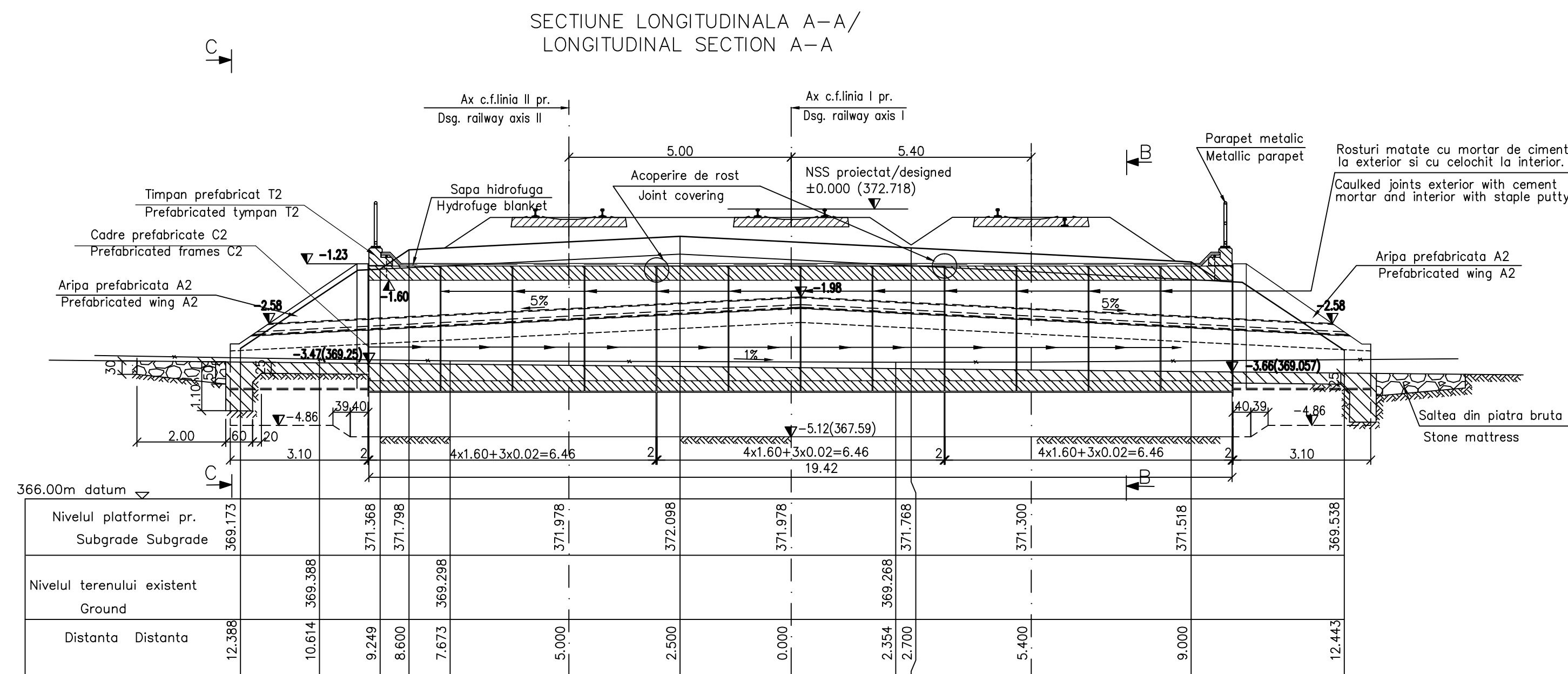
NOTE
 Number of precast section
 -Prefabricated frames C2: 12pcs.
 -Prefabricated wings A2: 4pcs.
 -Head-wall: 2pcs.

DATE HIDRAULICE:
 -Inaltimea de apa: h=0,58m
 -Perimetrul udal: P=3,16m
 -Aria udata: A=1,16m²
 -Viteza de curgere a apei V=2,38m/s

HIDRAULIC DATA:
 -Hydraulic height: h=0,58m
 -Perimeter: P=3,16m
 -surface: A=1,16m²
 -Water flow speed: V=2,38m/s

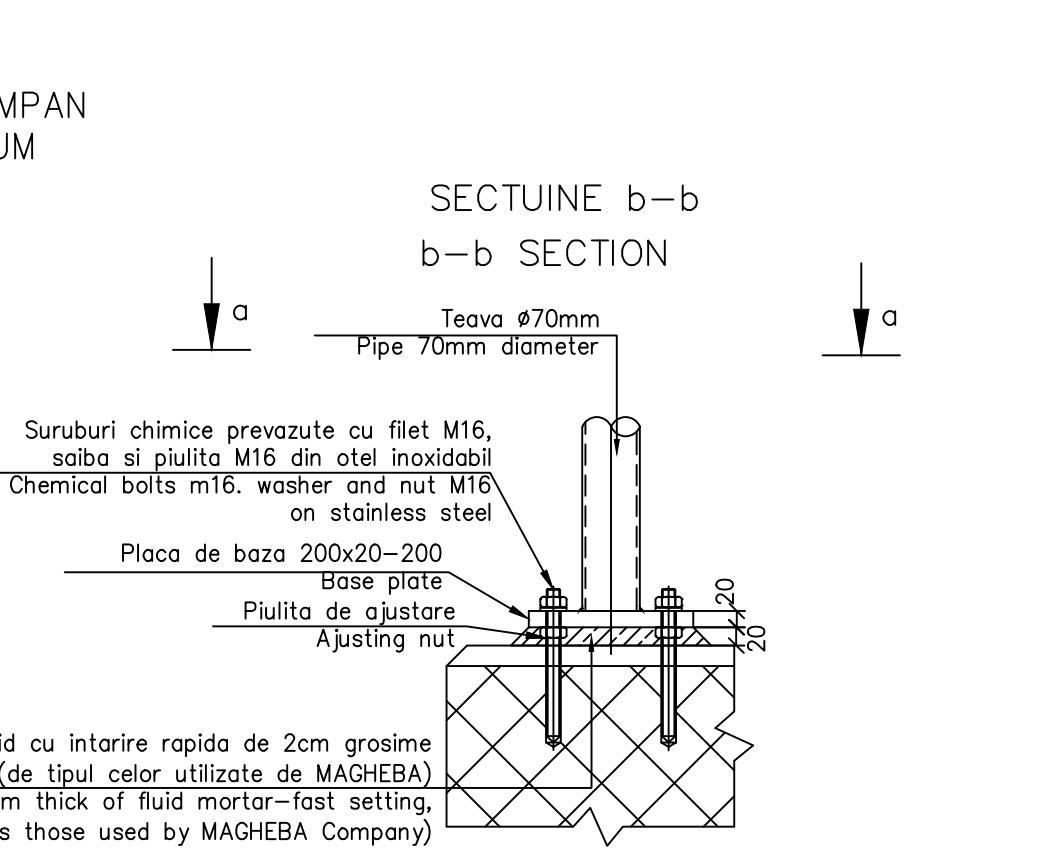
LEGENDA BETOANELOR
 CONCRETE LIST

- Beton în elemente prefabricate în general (cadre, aripi, timpane);
 -Concrete for prefabricated elements generally (frames, wings, tympana).
 C 35/45 - CEM II/A - S 32,5 - (XC4+XF3+XA1) - A/C = 0,50 - Dmax22 - Cl 0,20
- Beton în fundatia podetelor, a elementelor de racordare (aripi, pinteri), în pereu
 Concrete for the foundations of culverts, of connecting elements
 (wings, breakwaters), in pitching
 C 25/30 - CEM II/A - S 32,5 - (XF1) - A/C = 0,50 - Dmax32 - Cl 0,20
- Beton în rigola drenurilor, fundatiile sferturilor de con si pentru realizarea stratului suport pentru pereu;
 -Concrete for the drain gutters, for the foundations of cone quarters and for the support layer of revetment:
 C 25/30 - CEM II/A - S 32,5 - (XC4+XF3+XA1) - A/C = 0,50 - Dmax32 - Cl 0,20
- Beton în stratul de protectie a hidroizolatiei;
 -Concrete for the waterproofing protection layer:
 C 25/30 - CEM II/A - S 32,5 - (XC4+XF3) - A/C = 0,50 - Dmax16 - Cl 0,20



MATERIAL METALIC PENTRU CONFECTIONAREA PARAPETULUI PODETULUI / THE METALLIC MATERIAL TO BUILD PARAPET OF CULVERT

Poz. / Piece	Denumirea materialului / The denomination of the material	Buc.	Sectiune / Section	Lung. / Long. (mm)	Sectiune / Section		
					kg/mi	kg/buc	kg
P1	Placuta prindere / Clamping plate	4	200x20	200	31,40	6,28	25,12
P2	Stap parapet EN 10297 - E275 / Parapet pole	4	70x4	970	6,51	6,32	25,26
P3	Mano curenta EN 10297 - E275 / Handrail	2	70x4	2900	6,51	18,88	37,76
P4	Umplutura EN 10058 / Filling	2	38x3,5	1980	2,98	5,90	11,80
P5	Lisa EN 10058 / Ledge	2	38x3,5	1980	2,98	5,90	11,80
Total partial							111,74
Sudura 2% / Welding 2%							2,24
TOTAL							115



NOTA:
 1. Prezentul plan s-a intocmit pe baza urmatoarelor date:
 -plan de situatie
 -profil in lung
 -profil transversal
 -fisa podului
 -calcul hidrolic
 -date culesse pe teren
 2. Podetul corespunde la convoaiele de calcul UIC (LM71 si SW/2)
 3. La executie se vor respecta cu strictete prevederile din "Normativ pentru producerea betonului si executarea lucrarilor din beton, beton armat si beton precomprimat. Partea 1: Producerea betonului", indicativ NE 012/1-2007 si "Normativ pentru producerea betonului si executarea lucrarilor din beton, beton armat si beton precomprimat. Partea 2: Executarea lucrarilor din beton", indicativ NE 012/2-2010, iar verificarea calitatii lucrarilor si receptiunea lor se va face conform normativului C56-1985.
 4. Constructia se incadreaza in categoria de importanta B (constructii de importanta deosebita), modelul 1 de asigurare a calitatii si clasa de importanta B, conform HG 766/1997.
 5. Proiectul va fi verificat la exigentele A4.2; B2.2; D2.2.

NOTE:
 1. This plan has been drawn up based on the following data:
 -Lay-out Plan
 -Longitudinal Profile
 -Cross-section Profile
 -Bridge's File
 -Hydraulic determination
 -Field Data
 2. The culvert corresponds to the UIC determination convoys (LM71 and SW/2).
 3. The execution will strictly comply with the provisions of "Practice code for the concrete production and works execution, reinforced and pre-stressed concrete - Part 1: Practice code for concrete production" NE 012/1-2007 and "Practice code for the concrete production and works execution, reinforced and pre-stressed concrete - Part 2: The execution of concrete works" NE 012/2-2010, and the quality and the reception of the works shall be made accordingly to Norm C 56-1985.
 4. The construction has been classified in B category of importance (high important constructions), model 1-ensuring the quality and class of importance B according to C.O. 766/197.
 5. The project will be checked in order to comply with the A4.2; B2.2; D2.2 requirements.

D					
C					
B					
A	12.2011	Revizia 1	Elena Radu		
Index	Date	Modificare/Revision	Proiectant Designer	Aprobat Consultant Approved Consultant	Aprobat CFR Approved CFR



GUVERNUL ROMANIEI / ROMANIAN GOVERNMENT
PROIECT FINANȚAT DE UNIUNEA EUROPEANĂ / EUROPEAN UNION FINANCED PROJECT
C.N.C.F. "C.F.R." - S.A.



CLIENT / CLIENT

Approbat / Approved	Proiectant / Designer	Data / Date	Semnatura / Signature
	R. Liuzza		
	C. Gambelli		
	V.Kalidromitis		

SUBCONTRACTANT / SUBCONTRACTOR

Approbat / Approved	Responsabil Subcontractant / Subcontractant Responsible	Data / Date	Semnatura / Signature
	A. Dinulescu Stanciu	08.2011	

Reabilitarea liniei de cale ferata Braşov - Simeria, parte componentă a coridorului IV Pan European, pentru circulația trenurilor cu viteza maximă de 160 km/h,
Tronsoanel: Braşov - Sighişoara
 Rehabilitation of the railway line Braşov - Simeria, component Part of the IV Pan-European Corridor, for the trains circulation with maximum speed of 160 km/h,
Section : Braşov - Sighişoara

Denumire desen / Drawing Title :
STATIA / STATION: VANATORI
PODET - KM 271+233,472 / KM 271+233,472 - CULVERT
DISPOZITIE GENERALA / GENERAL LAYOUT

Scara / Scale	LOT / LOT	Nr. / No
1:100; 1:5		01 / 01

