


DATE HIDRAULICE:
 -Inaltimea de apa: h=1,00m
 -Perimetrul udat: P=4,00m
 -Aria udata: A=2,00m²
 -Viteza de curgere a apei V=3,13m/s


HIDRAULIC DATA:
 -Hydraulic height: h=1,00m
 -Perimeter: P=4,00m
 -surface: A=2,00m²
 -Water flow speed: V=3,13m/s


NOTA
 Numar de elemente prefabricate
 -Cadre C2 : 7buc
 -Aripi prefabricate A2: 4buc
 -Timpane prefabricate: 2buc

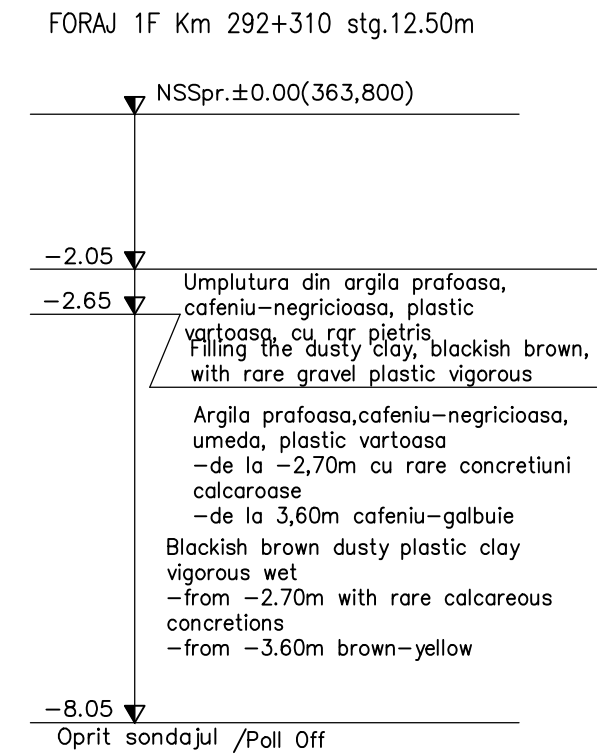
NOTE
 Number of precast section
 -Prefabricated frames C2: 7pcs.
 -Prefabricated wings A2: 4pcs.
 -Head-wall: 2pcs.

LEGENDA BETOANELOR
CONCRETE LIST

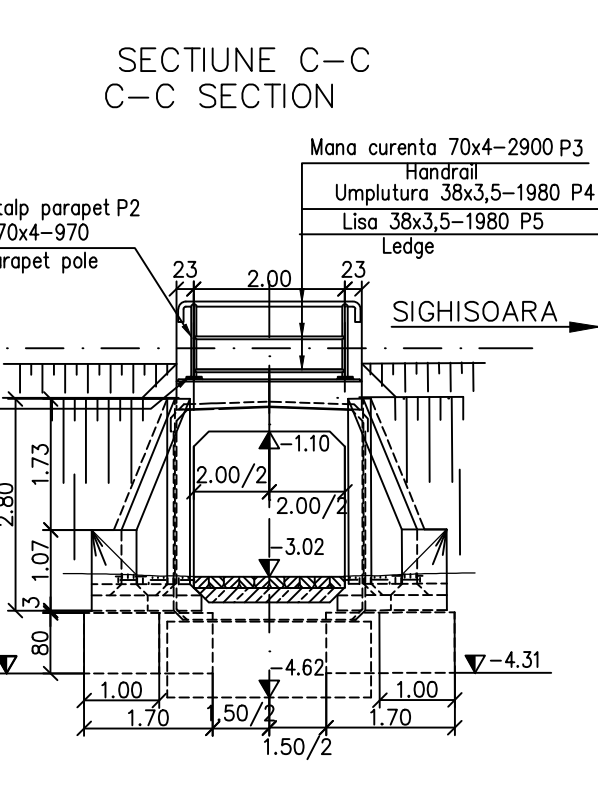
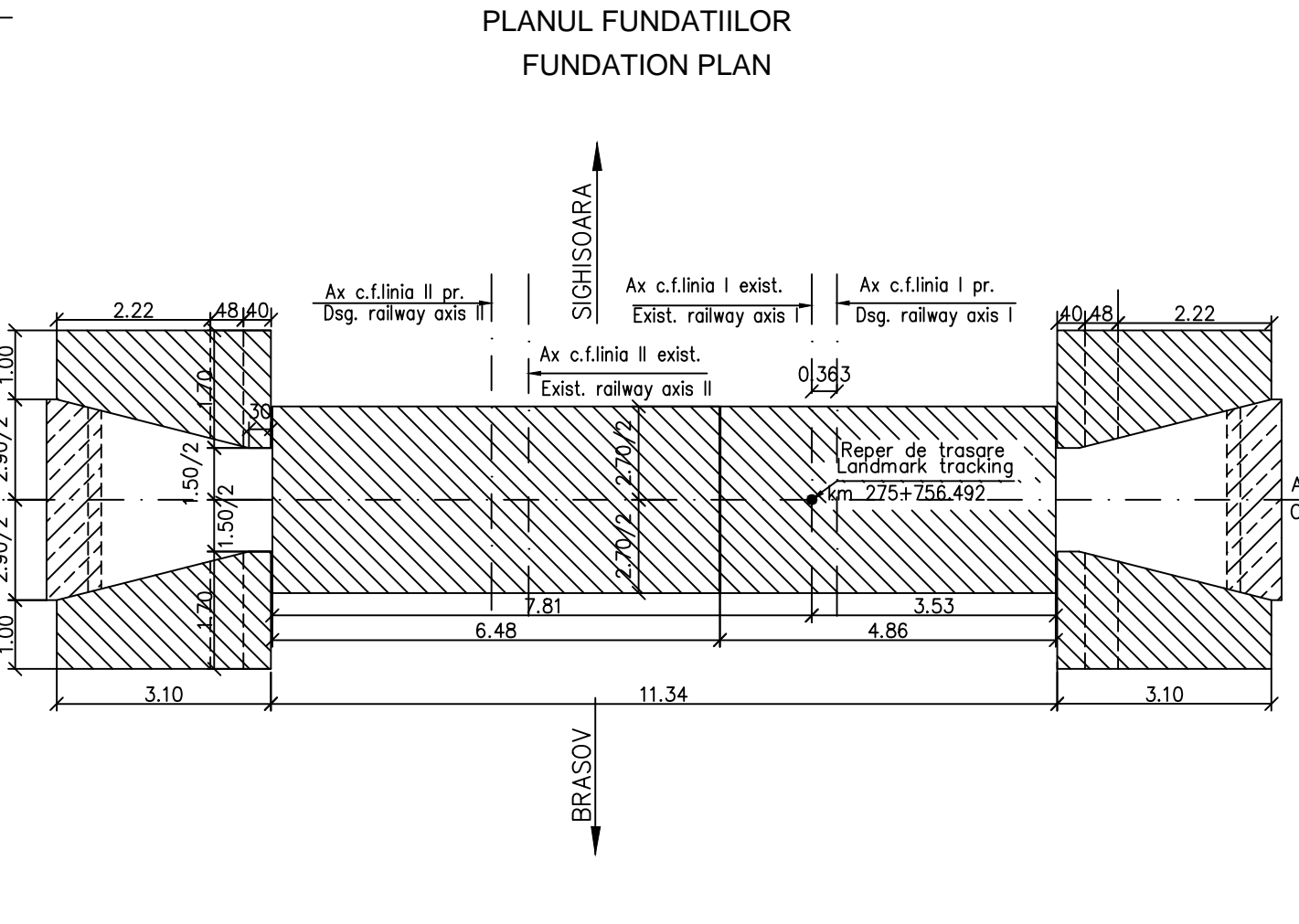
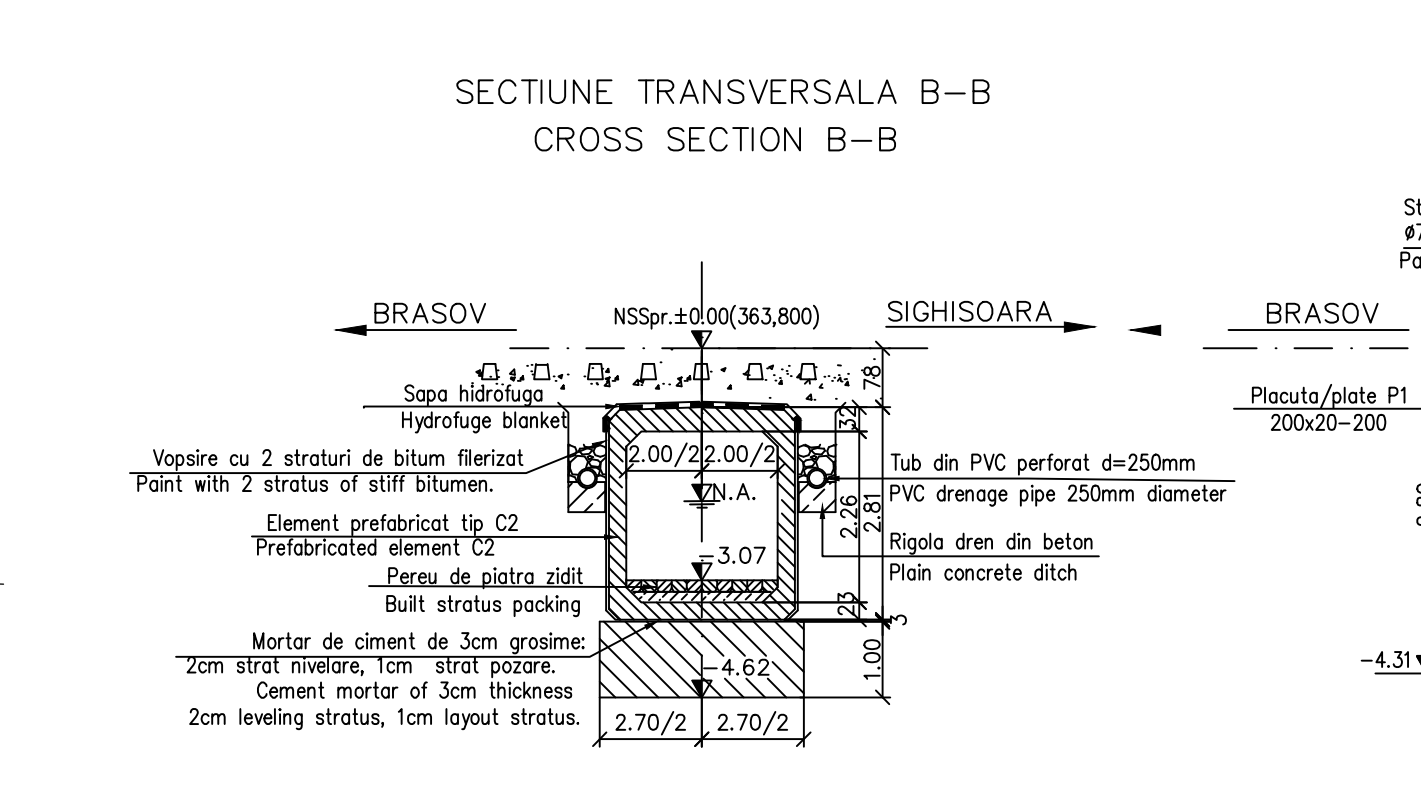
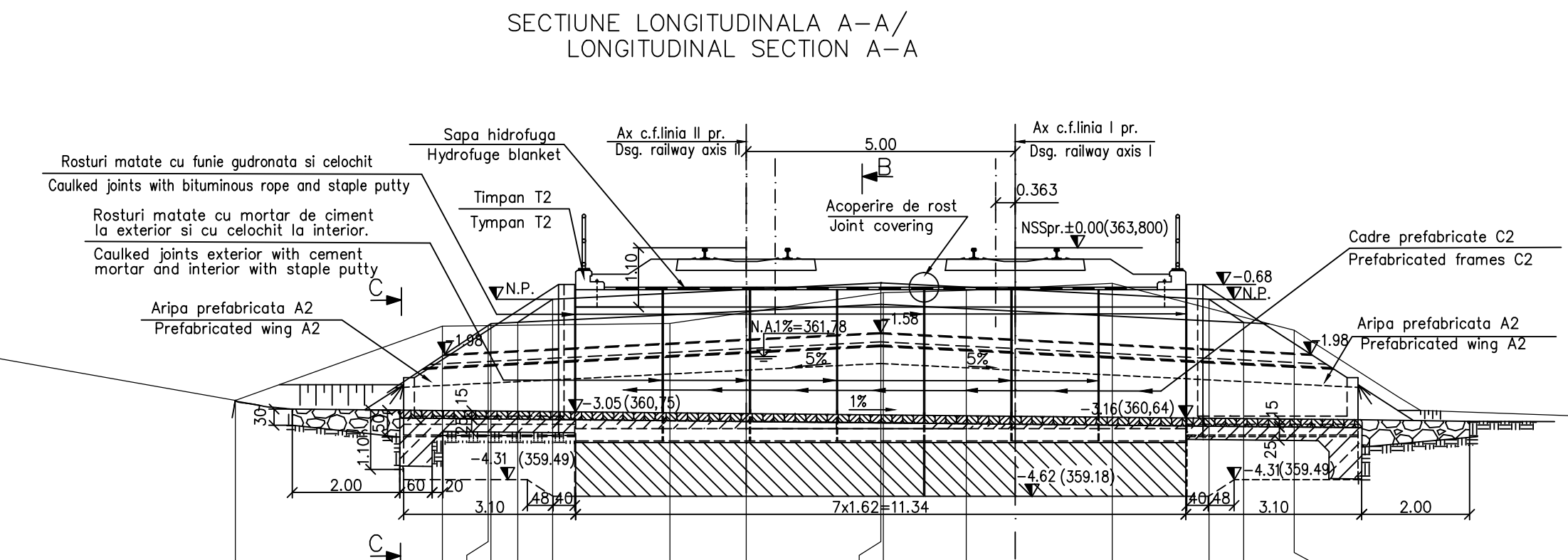
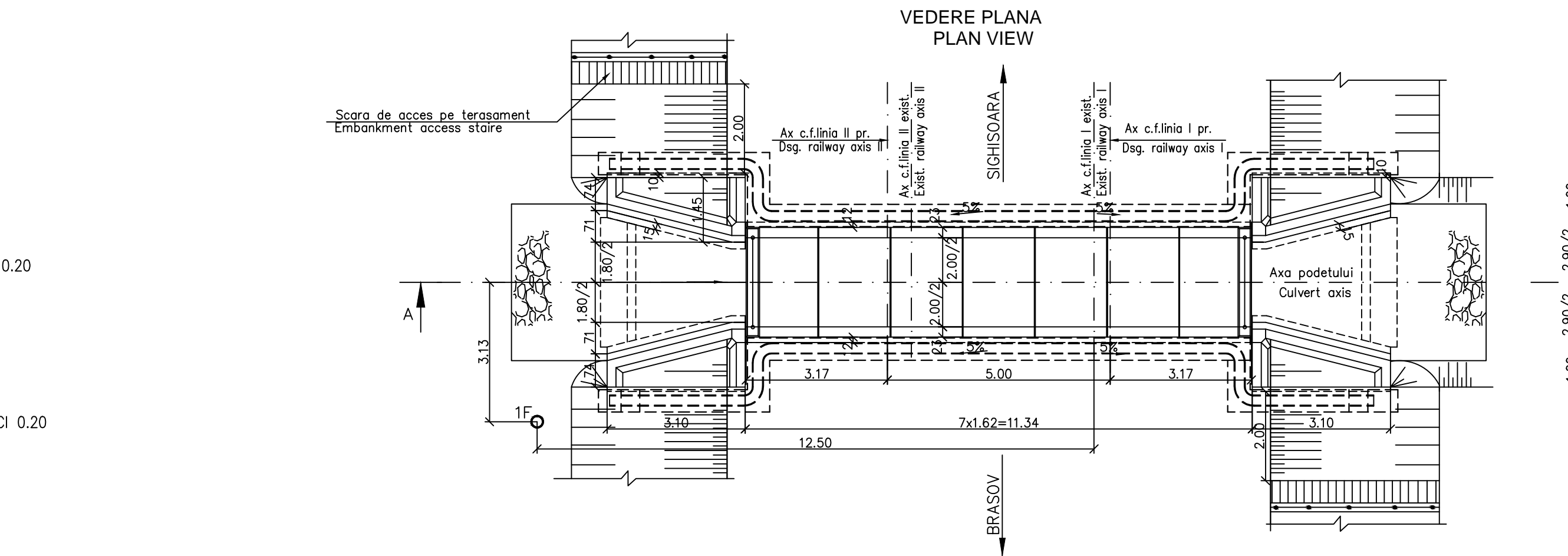
 Beton armat in elementele prefabricate
 Reinforced concrete in the prefabricated elements
 C35/45-CEM II/A-S32,5-(XC4+XF3+XA1)-A/C=0,50-Dmax 22-CI 0.20

 Beton simplu in fundatia elementelor prefabricate si a arilor
 Plain concrete in the prefabricated elements end wings
 C25/30-CEM II/A-S 32,5-(XF1)-A/C=0,50-Dmax 32-CI 0.20

 Beton simplu de panta in pinte si in rigola drenului
 Plain concrete slope and spur the gutter drain
 C 25/30-CEM II/A-S 32,5-(XC4+XF3+XA1)-A/C=0,50-Dmax 32-CI 0.20

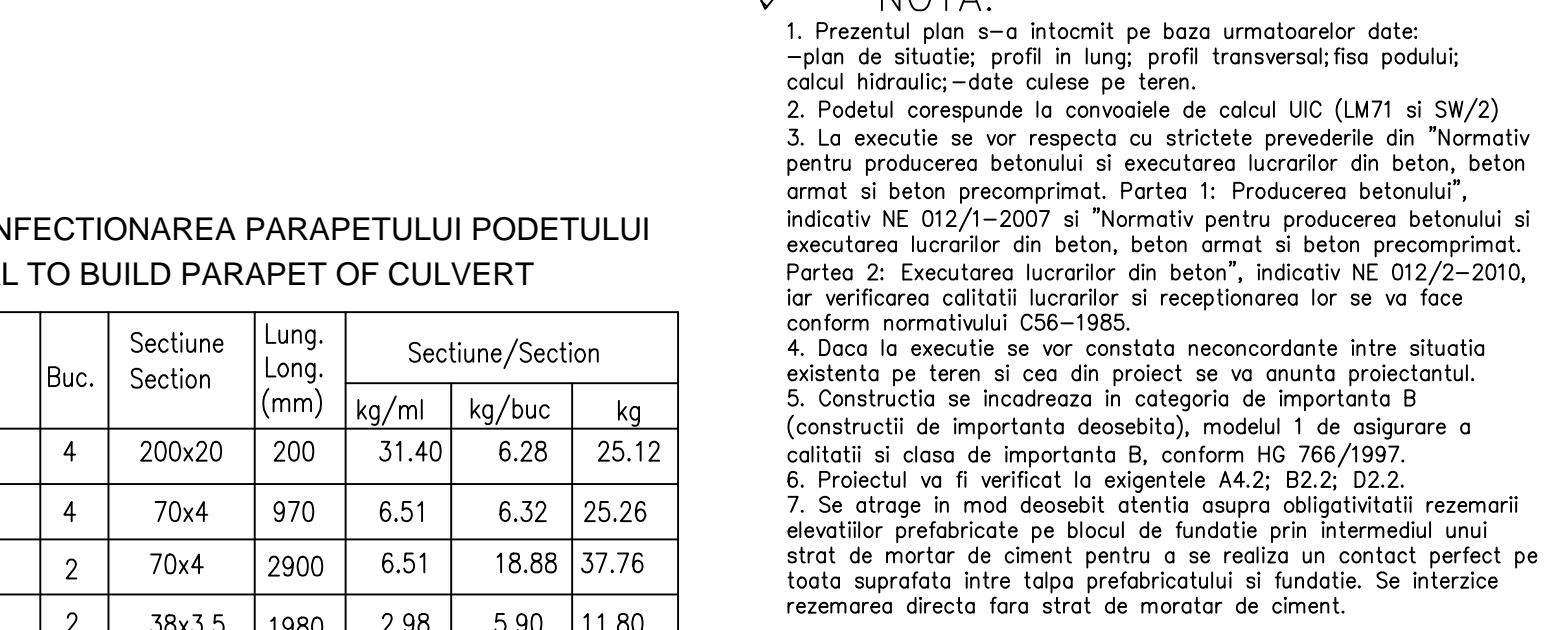


Nivelul platformei pr. Subgrade	
Nivelul terenului existent Ground	
Distanța Distance	



MATERIAL METALIC PENTRU CONFECTIONAREA PARAPETULUI PODETULUI
THE METALLIC MATERIAL TO BUILD PARAPET OF CULVERT

Poz. / Piece	Denumirea materialului / The denomination of the material	Buc.	Sectiune / Section	Lung. / Long. (mm)	Sectiune/Section		
					kg/ml	kg/buc	kg
P1	Placuta prindere / Clamping plate	4	200x200	200	31.40	6.28	25.12
P2	Stalp parapet EN 10297 - E275 / Parapet pole	4	70x4	970	6.51	6.32	25.26
P3	Mana curenta EN 10297 - E275 / Handrail	2	70x4	2900	6.51	18.88	37.76
P4	Umplutura EN 10058 / Filling	2	38x3,5	1980	2.98	5.90	11.80
P5	Lisa EN 10058 / Ledge	2	38x3,5	1980	2.98	5.90	11.80
Total partial							111.74
Sudura 2% / Welding 2%							2.24
TOTAL							115



NOTE:

- This plan has been drawn up based on the following data:
 -Layout Plan; Longitudinal Profile; Cross-section Profile; Bridge's File Hydraulic determination; Field Data.
- The culvert corresponds to the UIC determination convoys (LM71 and SW/2).
- The execution will strictly comply with the provisions of "Practice code for the concrete production and works execution, reinforced and pre-stressed concrete - Part 1: Practice code for concrete production" NE 012/1-2007 and "Practice code for the concrete production and works execution, reinforced and pre-stressed concrete - Part 2: The execution of concrete works" NE 012/2-2010, and the quality and the reception of the works shall be made accordingly to Norm 56-1985.
- If during the execution, discrepancies are found between the existing situation on site and the situation stated in the project, the designer will be notified.
- The construction has been classified in B category of importance (high important constructions), model 1-ensuring the quality and class of importance B according to G.O. 766/97.
- The project will be checked in order to comply with the A4.2; B2.2; D2.2 requirements.
- Particular attention is drawn on binding prefabricated elevations settlement on block foundation through a layer of cement mortar to achieve a perfect contact over the entire surface between precast and foundation base. Propping is prohibited without direct layer of cement mortar.

This drawing is forbidden to be copied, lent or used in other purposes than those previously approved by AREX Lider Company as its owner. Se interzice copierea, difuzarea, imprumutarea sau utilizarea in alte scopuri, fara permisiunea AREX Lider Company ca proprietar al desenului.

D					
C					
B					
A	11.2011	Revizia 1	Andrei Costan		
Indice Index	Data Date	Modificare Modification/Revision	Proiectant Designer	Aprobat Consultant Approved Consultant	Aprobat CFR Approved CFR

GUVERNUL ROMANIEI / ROMANIAN GOVERNMENT
 PROIECT FINANTAT DE UNIUNEA EUROPEANA / EUROPEAN UNION FINANCED PROJECT

CFR
 C.N.C.F. "C.F.R." - S.A.

CLIENT / CLIENT

ITALFERR GRUPPO FERROVIE DELLO STATO / Joint Venture leader
 Scott Wilson
 OBERMEYER PLANEN + BERATEN GmbH
 TECNIC Consulting Engineers

CONSULTANT / CONSULTANT

Aprobat / Approved	ef proiect / Project manager	R. Liuzza	Data / Date	Semn tur / Signature
Aprobat / Approved	Coordonator Sec iune 1 / Section 1 Coordinator	C. Gambelli		
Verificat / Checked	Expert Cheie / Checking Expert	V. Kallidromitis		

SUBCONTRACTANT / SUBCONTRACTOR

Aprobat / Approved	Responsabil Subcontractant / Subcontractant Responsible	A. Dinulescu Stanciu	01.2011	
Elaborat / Elaborated	Proiectant Designer	Andrei Costan	01.2011	

Reabilitarea liniei de cale ferata / Rehabilitation of the railway line
 IV Pan European, pentru circulatia trenurilor cu viteza maxim de 160 km/h,
 Corridor, for the trains circulation with maximum speed of 160 km/h,
Section : Brasov - Sighisoara

Proiect/Project 2004/RO/16/P/PA/003
 Faza / Phase: P.Th. / T.D.

Denumire desen / Drawing Title :
**INTERVAL VANATORI - ALBESTI / VANATORI - ALBESTI SECTION
 PODET - KM 275+756.492 / KM 275+756.492 - CULVERT
 DISPOZITIE GENERALA / GENERAL DISPOSITION**

Codificare / Codification System	Scara / Scale 1:100; 1:5	LOT / LOT	Nr. / No 01 / 01
----------------------------------	--------------------------	-----------	------------------

E A S 1 0 1 C 1 8 P A P O 0 9 8 1 0 0 2 1