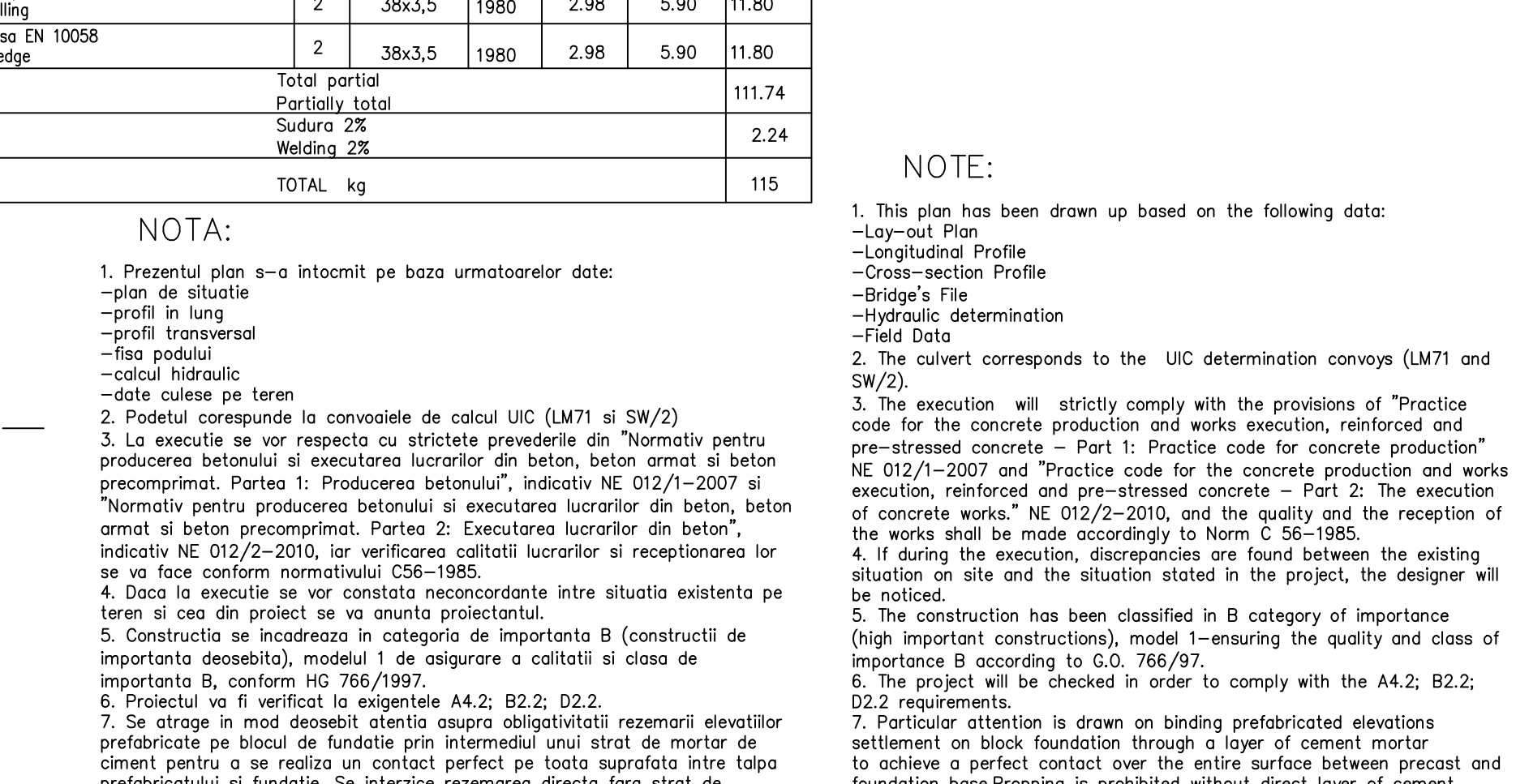
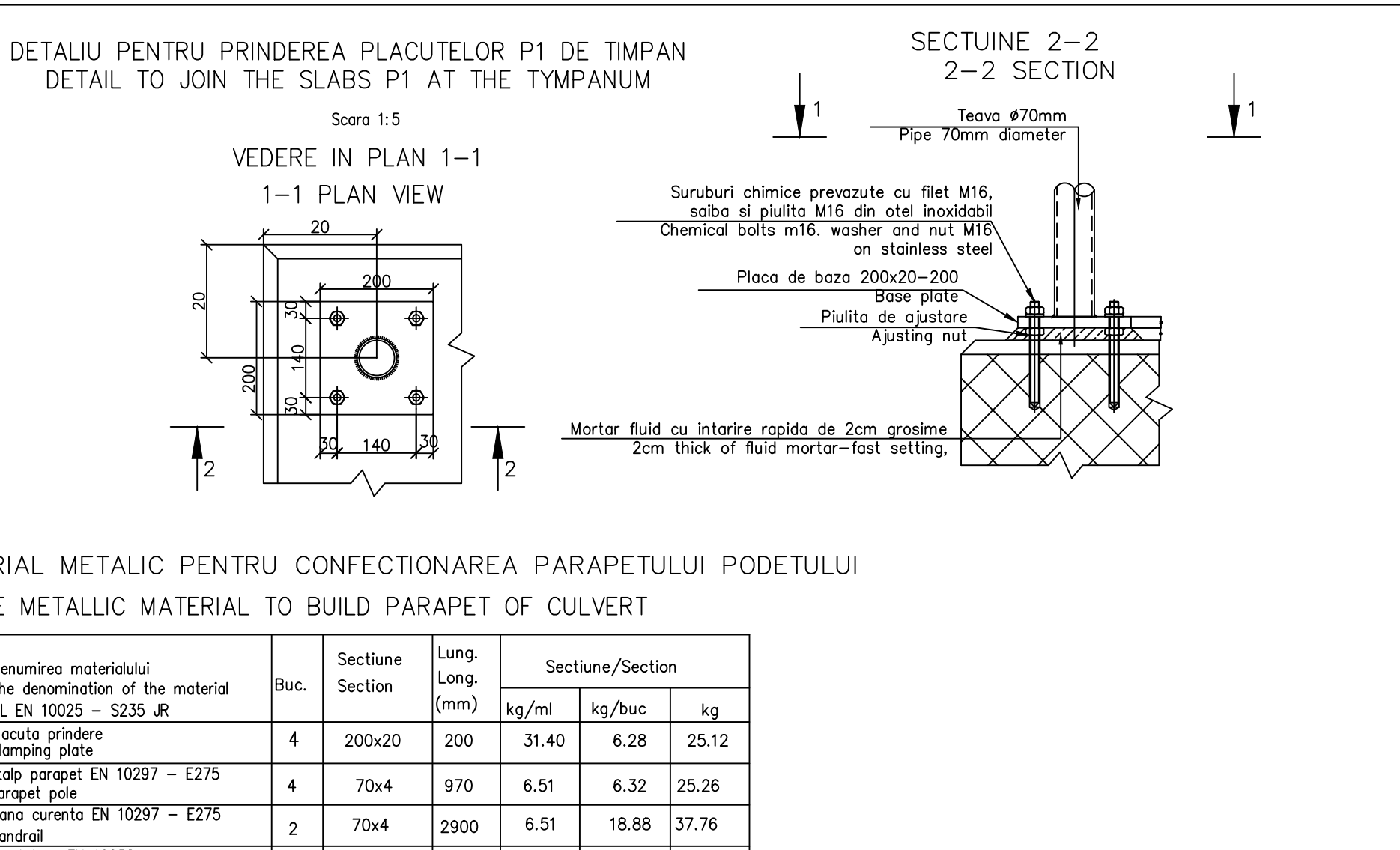
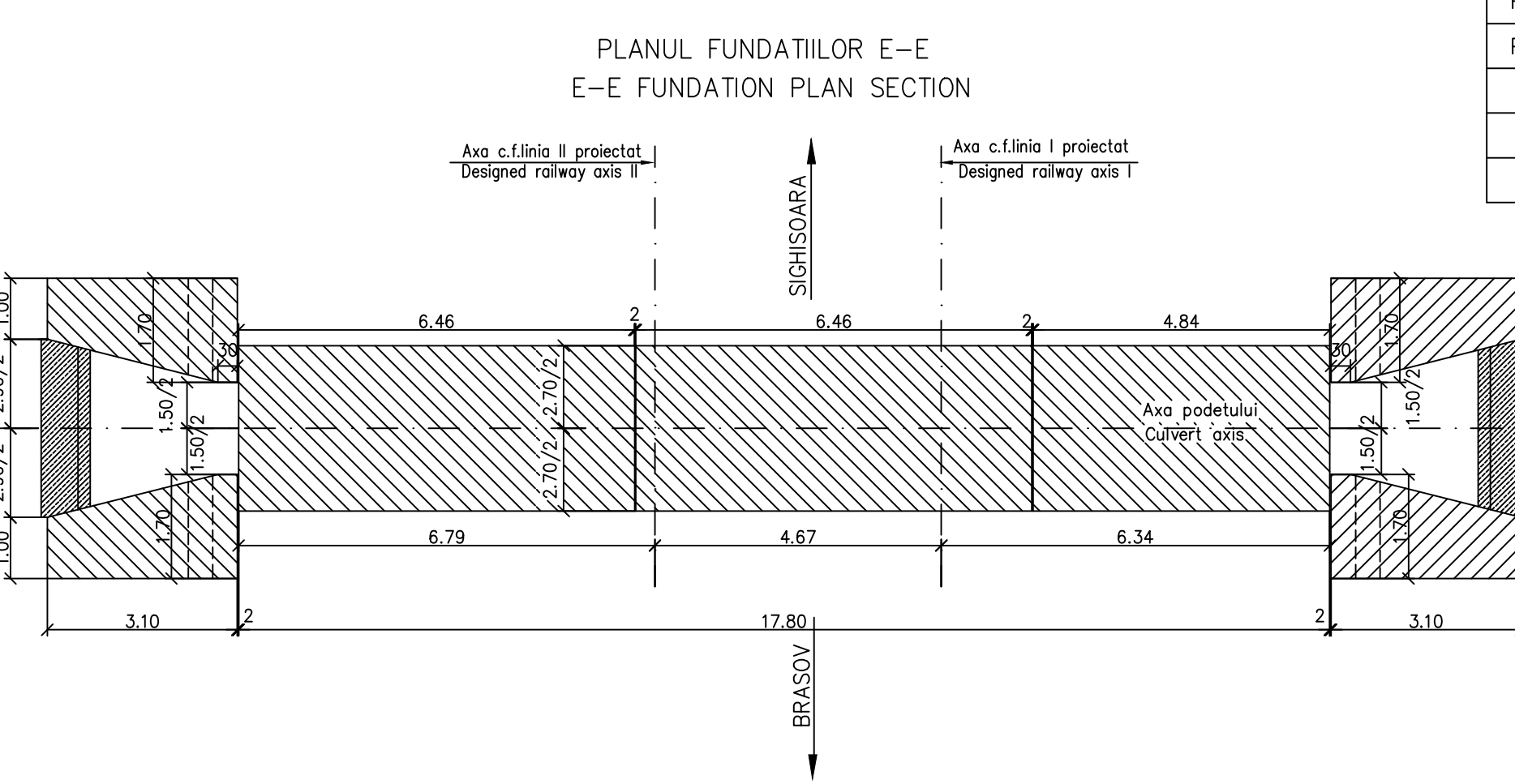
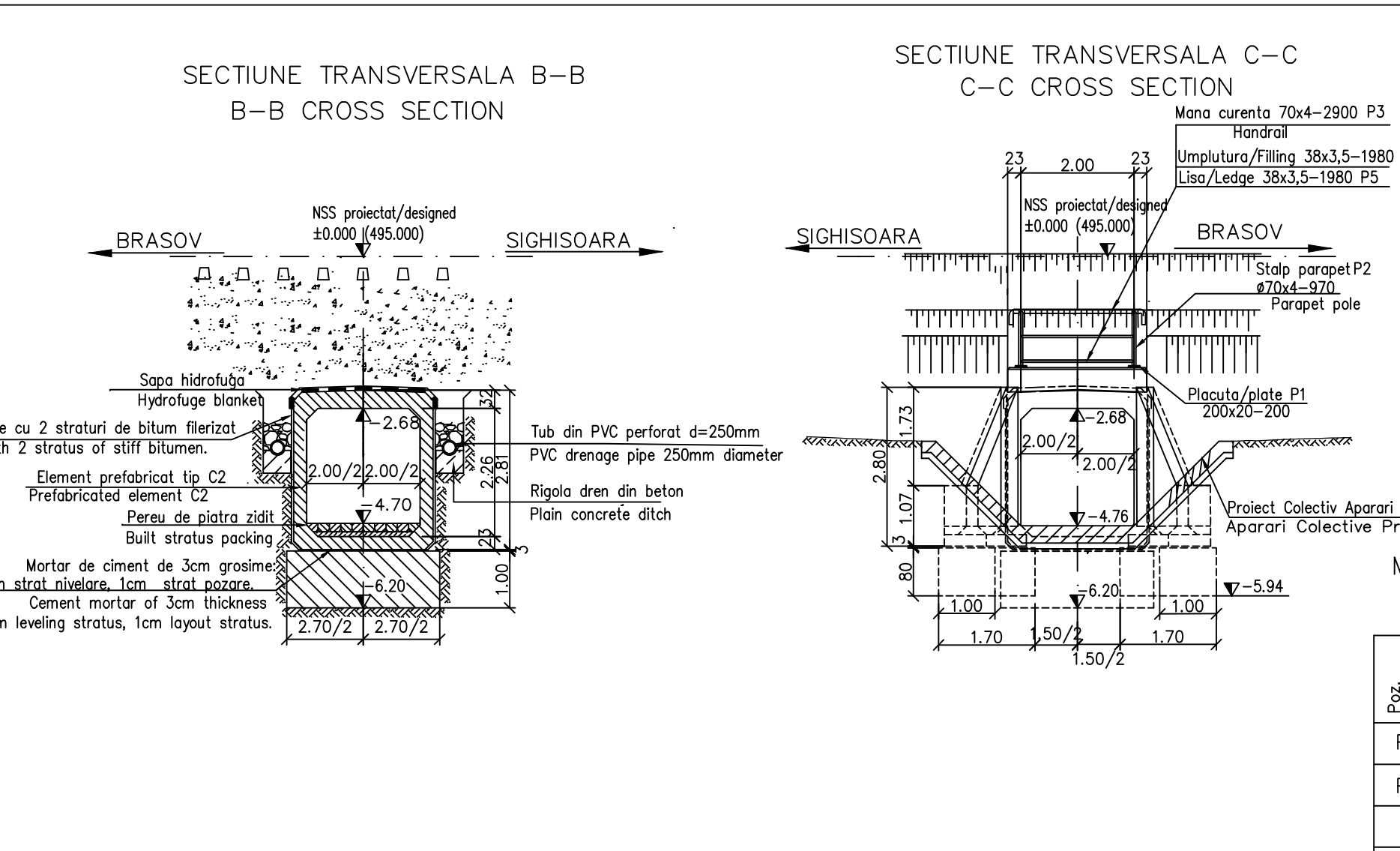
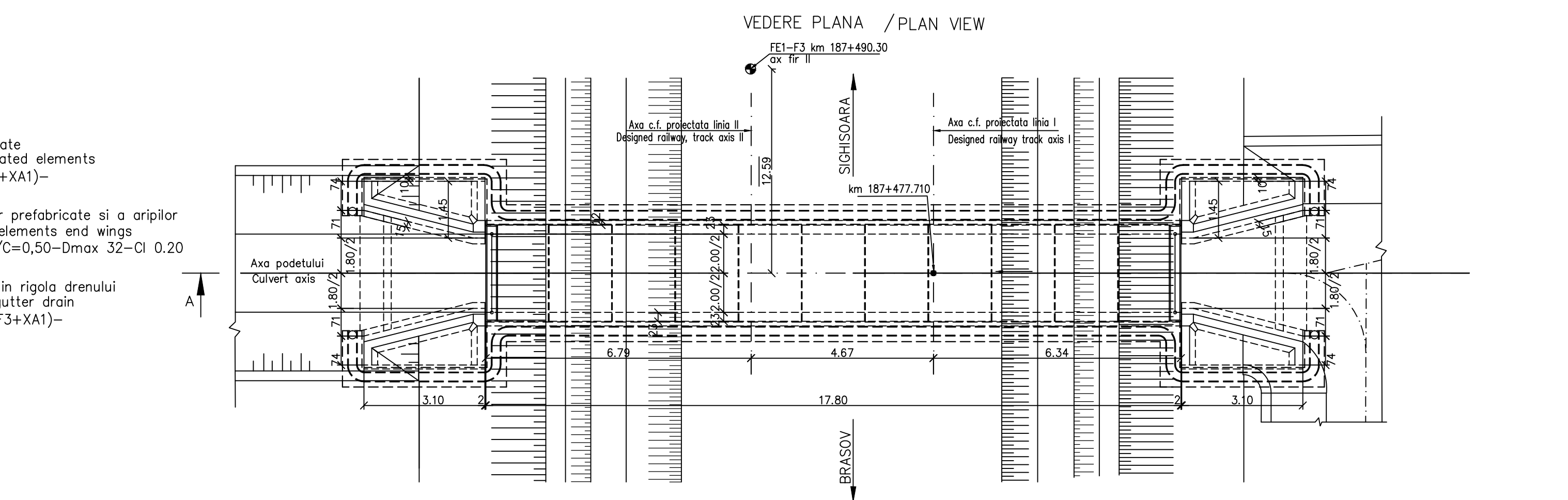
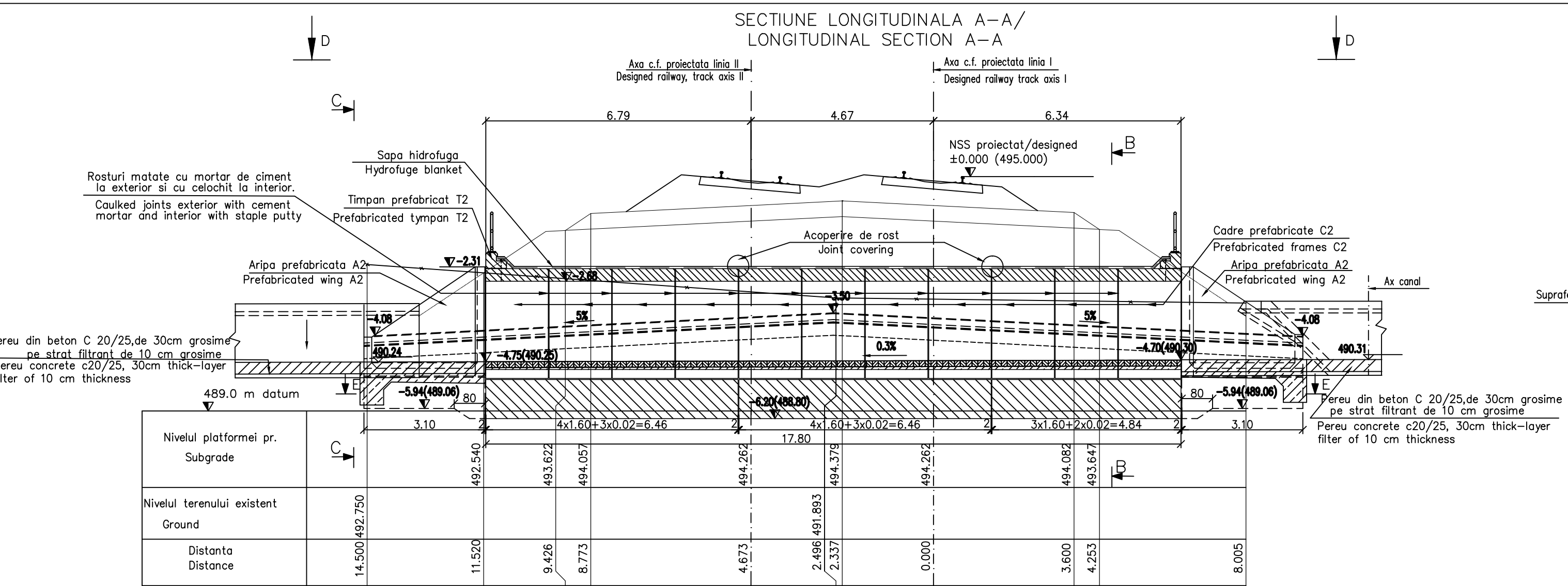


DATE HIDRAULICE:
 -Inaltimea de apa: h=0,79m
 -Perimetrul udat: P=3,58m
 -Aria udata: A=1,58m²
 -Viteza de curgere a apei V=2,78m/s

HIDRAULIC DATA:
 -Hydraulic height: h=0,79m
 -Perimeter: P=3,58m
 -surface: A=1,58m²
 -Water flow speed: V=2,78m/s

NOTA
 Numar de elemente prefabricate
 -Cadre prefabricate C2 11buc
 -Aripi prefabricate A2 4buc.
 -Timpane prefabricate T2 2buc

NOTE
 Number of precast section
 -Prefabricated frames C2 11pcs.
 -Prefabricated wings A2 4pcs.
 -Prefabricated tympan T2 2pcs.



Indice Index	Data Date	Modificari/Revisions	Proiectant Designer	Aprobat Consultant Approved Consultant	Aprobat CFR Approved CFR
A	12.2011	Revizia 1	Elena Radu		

CLIENT / CLIENT		CONSULTANT / CONSULTANT	
UVERNUL ROMANIEI / ROMANIAN GOVERNMENT PROIECT FINANAT DE UNIUNEA EUROPEANA / EUROPEAN UNION FINANCED PROJECT		C.N.C.F. "C.F.R." - S.A.	
GRUPPO FERROVIE DELLO STATO / Joint Venture leader 		OBERMEYER PLANEN + BERATEN GmbH TECNIC Consulting Engineers	
Aprobat Approved	ef project Project manager	R. Liuzza	
Aprobat Approved	Coordinator Sec iune 1 Section 1 Coordinator	C. Gambelli	
Verificat Checked	Expert Cheie Checking Expert	V.Kallidromitis	
SUBCONTRACTANT / SUBCONTRACTOR Aprobat Approved: Responsabil Subcontractant Subcontractant Responsible: A. Dinulescu Stanciu, 02.2011		Elaborat Elaborated: Proiectant Designer: Elena Radu, 03.2011	
Reabilitarea liniei de cale ferata / Rehabilitation of the railway line Braşov - Sighisoara, componenta 1 / component part of the IV Pan-European Corridor, for the trains circulation with maximum speed of 160 km/h, Section : Braşov - Sighisoara			
Denumire desen / Drawing Title : INTERVAL / SECTION BOD - FELDIOARA / PODET - KM 187+477.710 / KM 187+477.710 - CULVERT / DISPOZITIE GENERALA / GENERAL DISPOSITION			
Codificare / Codification System		Scara / Scale 1:100; 1:5	Nr. / No 01 / 01

MATERIAL METALIC PENTRU CONFECTIONAREA PARAPETULUI / THE METALLIC MATERIAL TO BUILD PARAPET OF CULVERT

Poz. Piece	Denumirea materialului / The denomination of the material	Buc.	Sectiune Section	Lung. Long. (mm)	Sectiune/Section		
					kg/ml	kg/buc	kg
P1	Placuta prindere / Clamping plate	4	200x20	200	31.40	6.28	25.12
P2	Stalp parapet EN 10297 - E275 / Parapet pole	4	70x4	970	6.51	6.32	25.26
P3	Mana curenta EN 10297 - E275 / Handrail	2	70x4	2900	6.51	18.88	37.76
P4	Umplutura EN 10058 / Filling	2	38x3,5	1980	2.98	5.90	11.80
P5	Lisa EN 10058 / Ledge	2	38x3,5	1980	2.98	5.90	11.80
Total partial / Partially total					111.74		
Sudura 2% / Welding 2%					2.24		
TOTAL kg					115		

NOTA:

- Prezentul plan s-a intocmit pe baza urmatoarelor date:
 - plan de situatie
 - profil in lung
 - profil transversal
 - fisa podului
 - calcul hidraulic
 - date cuse pe teren
- Podetul corespunde la convoaiele de calcul UIC (LM71 si SW/2)
- La executie se vor respecta cu strictete prevederile din "Normativ pentru producerea betonului si executarea lucrarilor din beton, beton armat si beton precomprimat. Partea 1: Producerea betonului", indicativ NE 012/1-2007 si "Normativ pentru producerea betonului si executarea lucrarilor din beton, beton armat si beton precomprimat. Partea 2: Executarea lucrarilor din beton", indicativ NE 012/2-2010, iar verificarea calitatii lucrarilor si receptionarea lor se va face conform normativului C56-1985
- Daca la executie se vor constata neconcordanțe intre situatia existenta pe teren si cea din proiect se va anunta proiectantul.
- Construcția se încadrează în categoria de importanță B (construcții de importanță deosebită), modelul 1 de asigurare a calitatii si clasa de importanță B, conform HG 766/1997.
- Proiectul va fi verificat la exigentele A4.2; B2.2; D2.2.
- Se atrage în mod deosebit atenția asupra obligativității rezemării elevatiilor prefabricate pe blocul de fundație prin intermediul unui strat de mortar de ciment pentru a se realiza un contact perfect pe toata suprafața între talpa prefabricatului și fundație. Se interzice rezemarea directă fără strat de mortar de ciment.

NOTE:

- This plan has been drawn up based on the following data:
 - Lay-out Plan
 - Longitudinal Profile
 - Cross-section Profile
 - Bridge's File
 - Hydraulic determination
 - Field Data
- The culvert corresponds to the UIC determination convoys (LM71 and SW/2)
- The execution will strictly comply with the provisions of "Practice code for the concrete production and works execution, reinforced and pre-stressed concrete - Part 1: Practice code for concrete production" NE 012/1-2007 and "Practice code for the concrete production and works execution, reinforced and pre-stressed concrete - Part 2: The execution of concrete works." NE 012/2-2010, and the quality and the reception of the works shall be made accordingly to Norm C 56-1985.
- If during the execution, discrepancies are found between the existing situation on site and the situation stated in the project, the designer will be notified.
- The construction has been classified in B category of importance (high important constructions), model 1-ensuring the quality and class of importance B according to G.O. 766/97.
- The project will be checked in order to comply with the A4.2; B2.2; D2.2 requirements.
- Particular attention is drawn on binding prefabricated elevations settlement on block foundation through a layer of cement mortar to achieve a perfect contact over the entire surface between precast and foundation base. Propping is prohibited without direct layer of cement mortar.

E A 5 1 0 1 C 0 6 P A P O 0 1 0 1 0 0 2 1