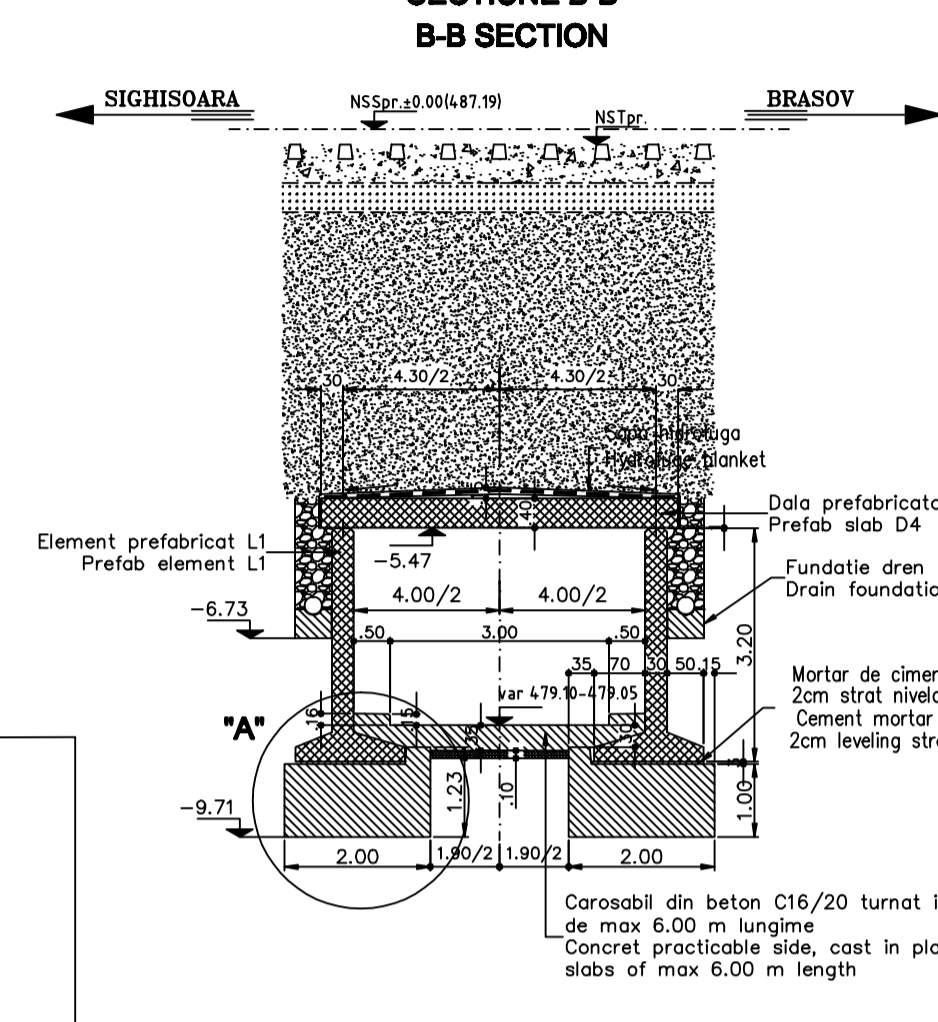


NOTA
 Numar de elemente prefabricate
 -Dale curente D4: 30buc
 -Dale marginale D4: 2buc
 -Elevatii L1: 32buc.
 -Aripi prefabricate A3: 4buc

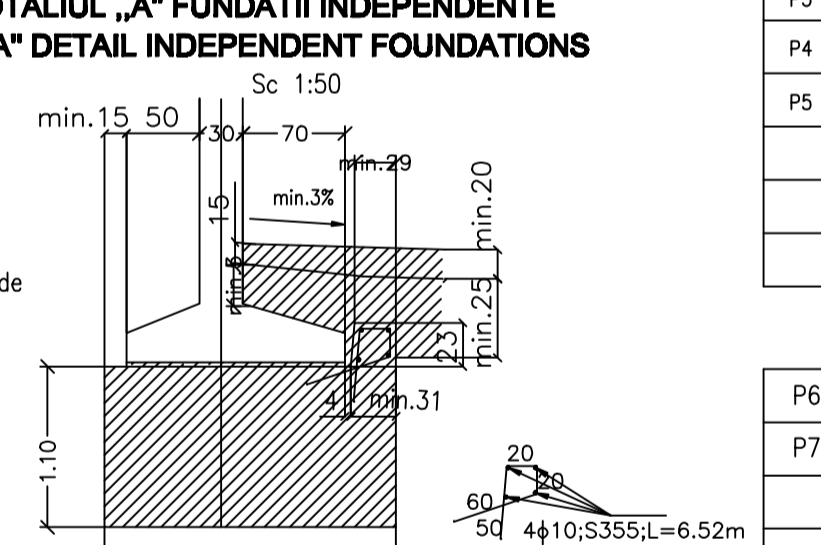
NOTE
 Number of precast elements
 -Standard slab D4: 30 pcs.
 -Edge slab D4: 2pcs.
 -L1 elevations: 32 pcs.
 -Precast wingwall A3: 4pcs



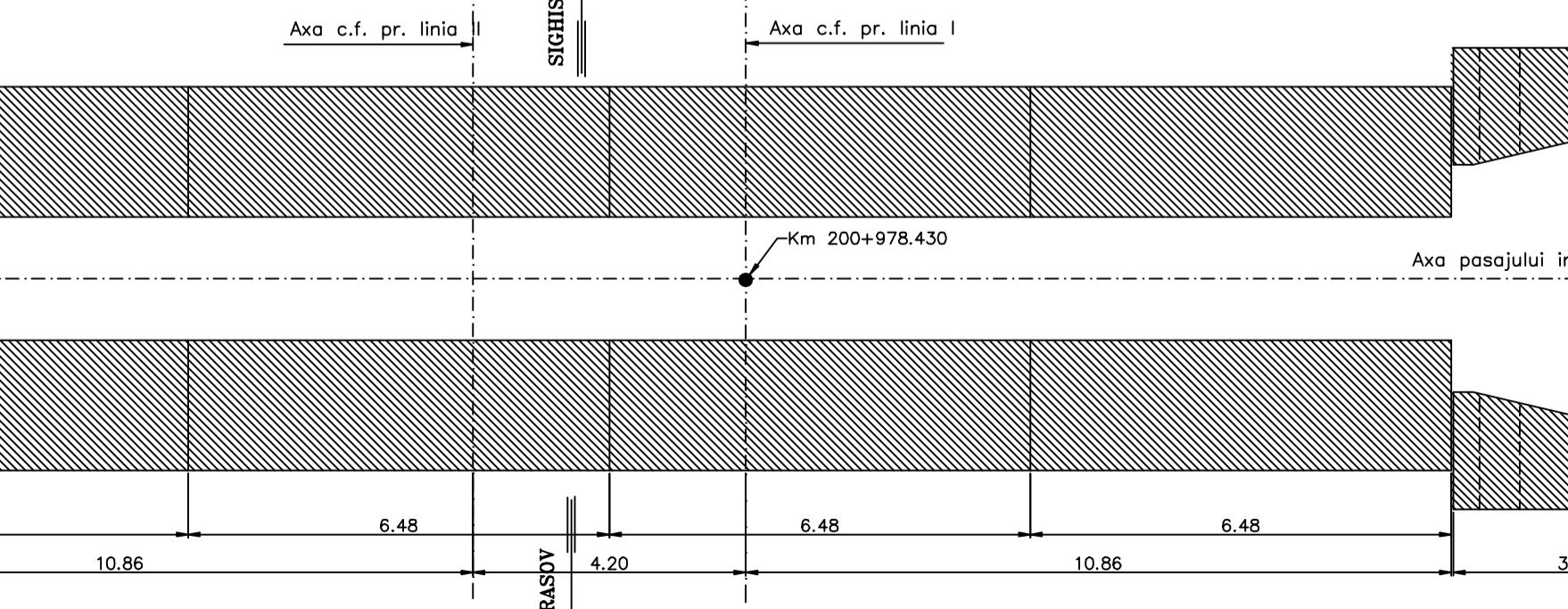
DETALII PARAPET GUARD RAIL DETAILS
 SC 1:5

NOTA
 Pe blocul de fundatie se asaza un strat de 2 cm de mortar de ciment, pentru nivelare si un strat de 1 cm pentru rezemare. Prefabricatul se asaza cu macarua, dupa care, se ridica si se observe urma lasata pe stratul de mortar. In cazul in care nu s-a realizat rezemarea pe toata suprafata, se completeaza cu mortar de ciment si se reia operatia.

NOTA
 The block foundation is laid a layer of 2 cm of cement mortar for leveling and a boundary layer of 1 cm. The prefabricated is placed by crane, after which, following the rise and there is a layer of mortar left. If there has been propping all over, make cement mortar and resume operation.

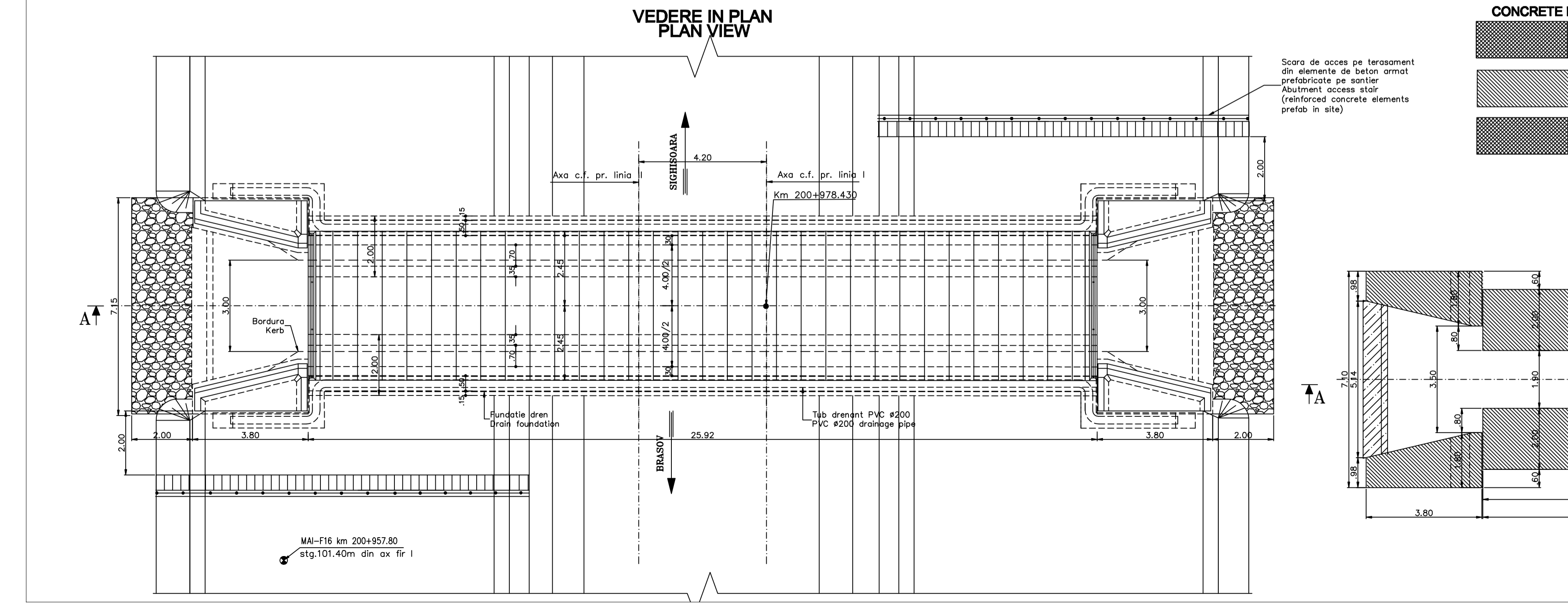


PLANUL FUNDATIILOR
FUNDATION PLAN



LEGENDA BETOANELOR
CONCRETE LIST

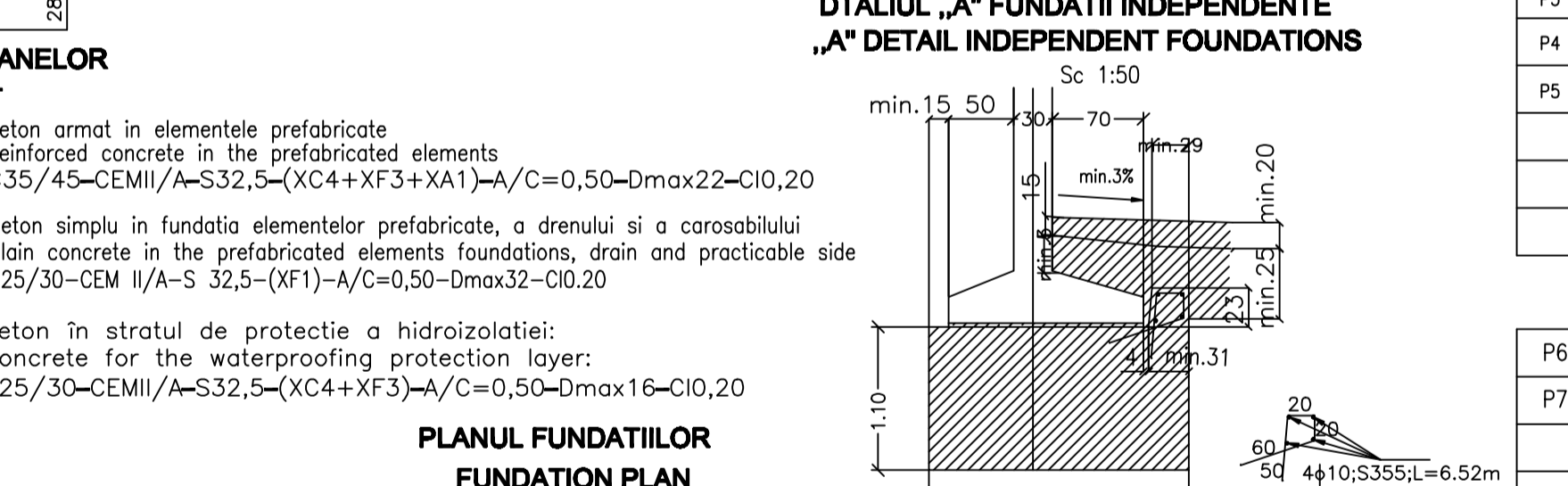
- Beton armat in elementele prefabricate / Reinforced concrete in the prefabricated elements: C25/45-CEMII/A-S32,5-(XC4+XF3+XA1)-A/C=0,50-Dmax22-Cl0,20
- Beton simplu in fundatia elementelor prefabricate, a drenului si a carosabilului / Plain concrete in the prefabricated elements foundations, drain and practicable side: C25/30-CEM II/A-S 32,5-(XF1)-A/C=0,50-Dmax32-Cl0,20
- Beton in stratul de protectie a hidroizolatiei / Concrete for the waterproofing protection layer: C25/30-CEMII/A-S32,5-(XC4+XF3)-A/C=0,50-Dmax16-Cl0,20



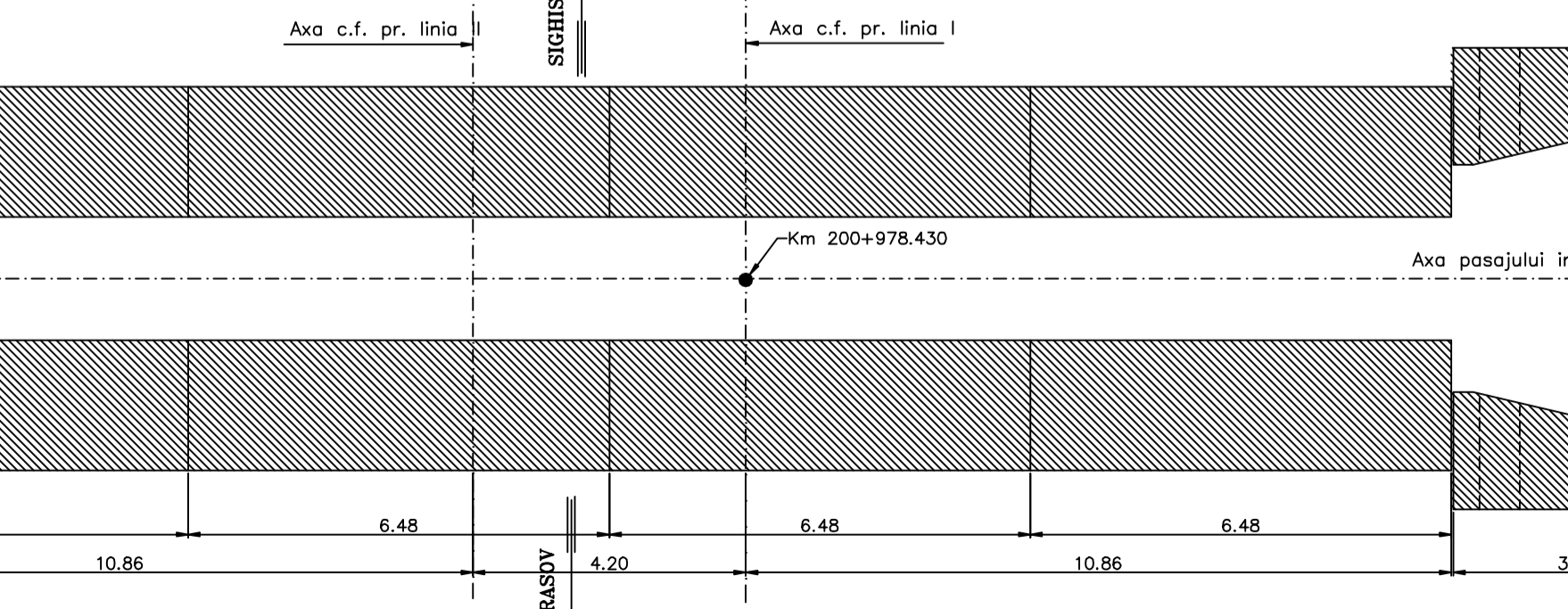
DETALII PARAPET GUARD RAIL DETAILS
 SC 1:5

NOTA
 Pe blocul de fundatie se asaza un strat de 2 cm de mortar de ciment, pentru nivelare si un strat de 1 cm pentru rezemare. Prefabricatul se asaza cu macarua, dupa care, se ridica si se observe urma lasata pe stratul de mortar. In cazul in care nu s-a realizat rezemarea pe toata suprafata, se completeaza cu mortar de ciment si se reia operatia.

NOTA
 The block foundation is laid a layer of 2 cm of cement mortar for leveling and a boundary layer of 1 cm. The prefabricated is placed by crane, after which, following the rise and there is a layer of mortar left. If there has been propping all over, make cement mortar and resume operation.

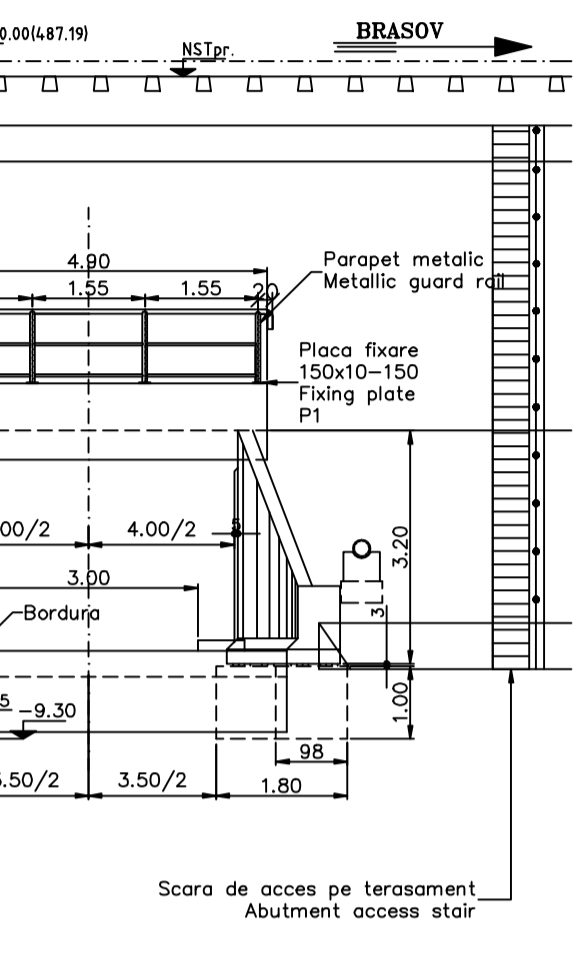


PLANUL FUNDATIILOR
FUNDATION PLAN



LEGENDA BETOANELOR
CONCRETE LIST

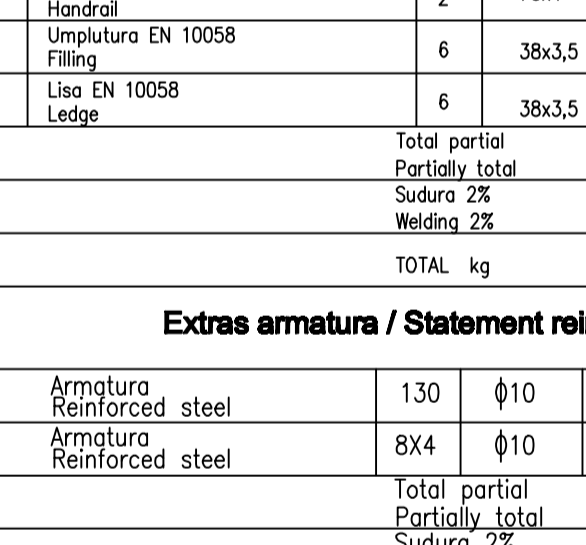
- Beton armat in elementele prefabricate / Reinforced concrete in the prefabricated elements: C25/45-CEMII/A-S32,5-(XC4+XF3+XA1)-A/C=0,50-Dmax22-Cl0,20
- Beton simplu in fundatia elementelor prefabricate, a drenului si a carosabilului / Plain concrete in the prefabricated elements foundations, drain and practicable side: C25/30-CEM II/A-S 32,5-(XF1)-A/C=0,50-Dmax32-Cl0,20
- Beton in stratul de protectie a hidroizolatiei / Concrete for the waterproofing protection layer: C25/30-CEMII/A-S32,5-(XC4+XF3)-A/C=0,50-Dmax16-Cl0,20



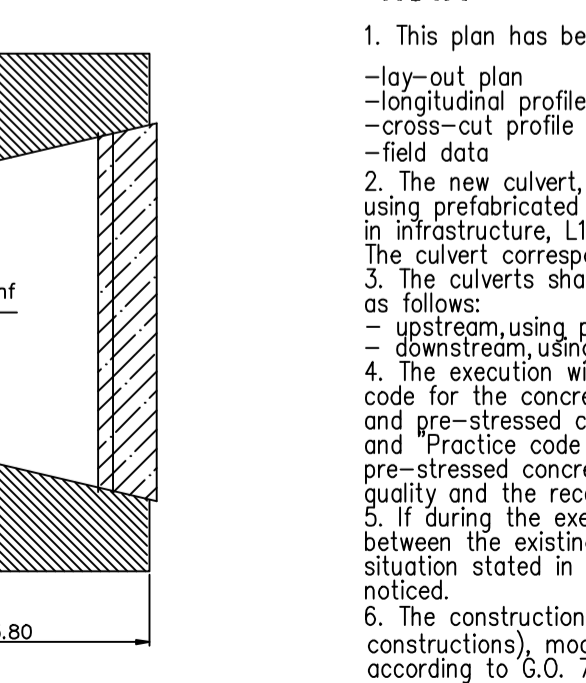
DETALII PARAPET GUARD RAIL DETAILS
 SC 1:5

NOTA
 Pe blocul de fundatie se asaza un strat de 2 cm de mortar de ciment, pentru nivelare si un strat de 1 cm pentru rezemare. Prefabricatul se asaza cu macarua, dupa care, se ridica si se observe urma lasata pe stratul de mortar. In cazul in care nu s-a realizat rezemarea pe toata suprafata, se completeaza cu mortar de ciment si se reia operatia.

NOTA
 The block foundation is laid a layer of 2 cm of cement mortar for leveling and a boundary layer of 1 cm. The prefabricated is placed by crane, after which, following the rise and there is a layer of mortar left. If there has been propping all over, make cement mortar and resume operation.



PLANUL FUNDATIILOR
FUNDATION PLAN



LEGENDA BETOANELOR
CONCRETE LIST

- Beton armat in elementele prefabricate / Reinforced concrete in the prefabricated elements: C25/45-CEMII/A-S32,5-(XC4+XF3+XA1)-A/C=0,50-Dmax22-Cl0,20
- Beton simplu in fundatia elementelor prefabricate, a drenului si a carosabilului / Plain concrete in the prefabricated elements foundations, drain and practicable side: C25/30-CEM II/A-S 32,5-(XF1)-A/C=0,50-Dmax32-Cl0,20
- Beton in stratul de protectie a hidroizolatiei / Concrete for the waterproofing protection layer: C25/30-CEMII/A-S32,5-(XC4+XF3)-A/C=0,50-Dmax16-Cl0,20

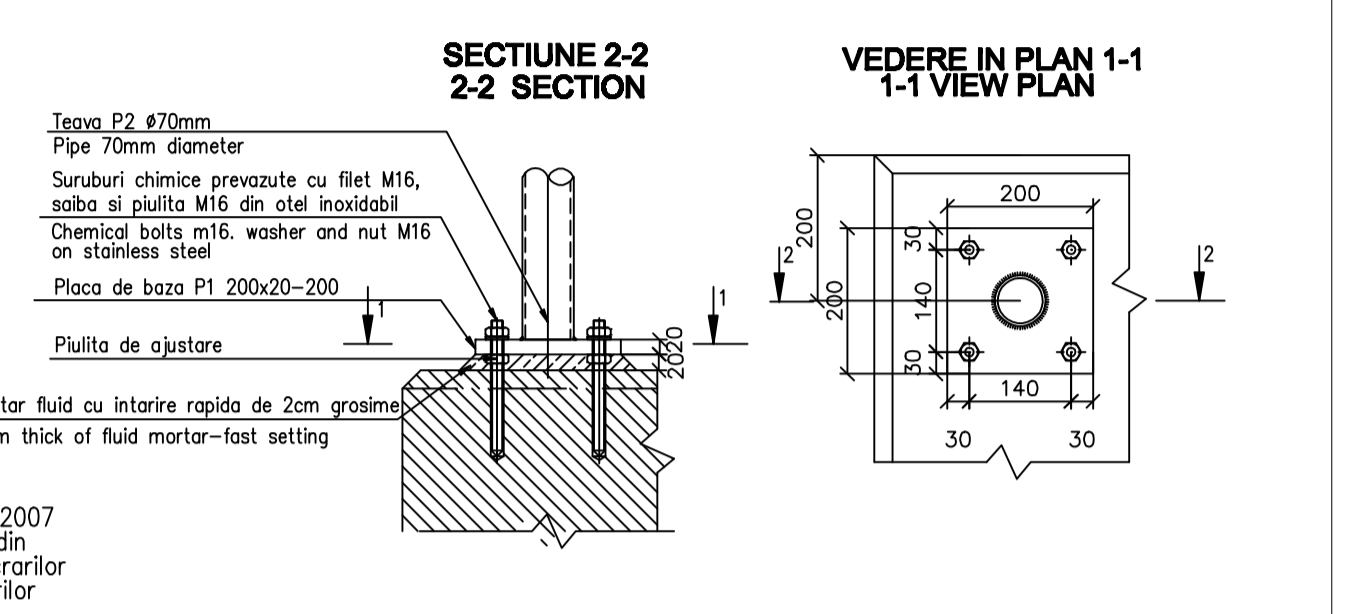
MATERIAL METALIC PENTRU CONFECTIONAREA PARAPETULUI PODETULUI
THE METALLIC MATERIAL TO BUILD PARAPET OF CULVERT

Denumirea materialului / The denomination of the material	Cl. EN 10025 - S235 JR	Buc.	Section	Long (mm)	kg/ml	kg/buc.	kg
P1 Placuta prindere / Clamping plate	8	200x20	200	31.40	6.28	50.24	
P2 Stalp parapet EN 10297 - E275 / Parapet pole	8	70x4	970	6.51	6.32	50.56	
P3 Mono curenta EN 10297 - E275 / Handrail	2	70x4	5550	6.51	36.13	72.28	
P4 Umplutura EN 10058 / Filling	6	38x3,5	1550	2.98	4.62	27.71	
P5 Lasa EN 10058 / Lidge	6	38x3,5	1550	2.98	4.62	27.71	
Total partial / Partially total							228.48
Sudura 2%							4.57
TOTAL							234

Extras armatura / Statement reinforcing

	P6	P7					
Armatura / Reinforced steel	130	Ø10	1650	0.617	1.018	132.34	
Armatura / Reinforced steel	8X4	Ø10	6520	0.617	4.022	128.70	
Total partial / Partially total							261.04
Sudura 2%							5.22
TOTAL							267

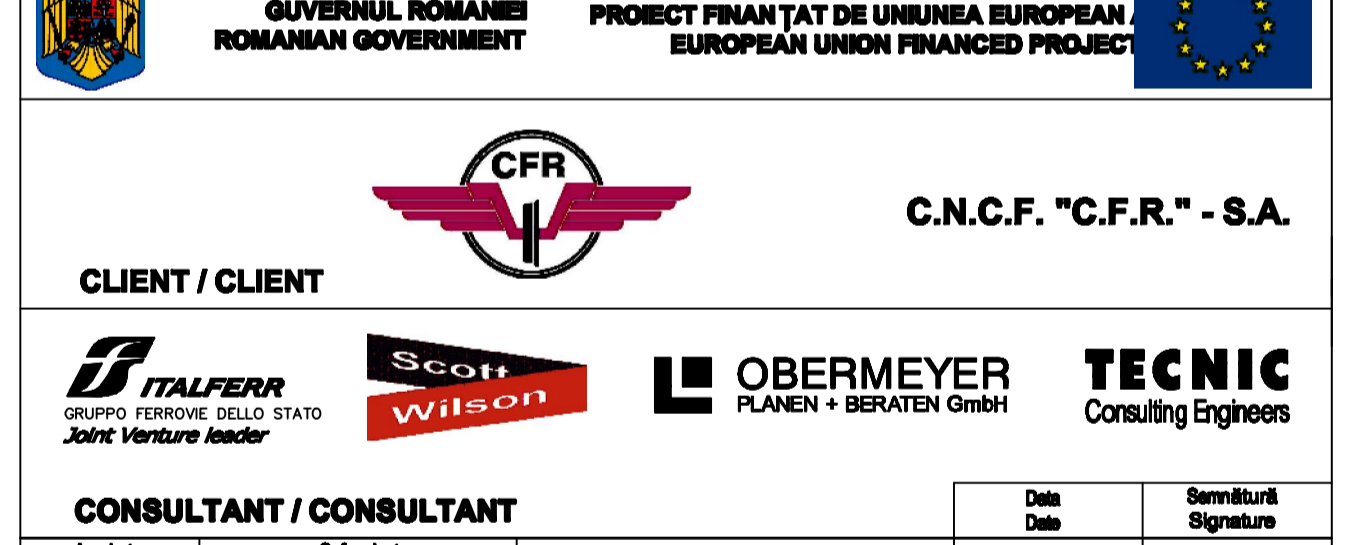
NOTA
 1. This plan has been drawn up based on the following:
 -lay-out plan
 -longitudinal profile
 -cross-cut profile
 -field data
 2. The new culvert, 4.00m span shall be carried out using prefabricated elements: in superstructure D4 slabs and in infrastructure, L1 elevations and independent foundations. The culvert corresponds to the UIC determination conveyors (LM71 and SW/2).
 3. The culverts shall be connected to the embankment as follows:
 - upstream, using prefabricated wings A3
 - downstream, using prefabricated wings A3
 4. The execution will strictly comply with the provisions of "Practice code for the concrete production and works execution, reinforced and pre-stressed concrete:Part 1: Practice code for concrete production" NE 012/1-2007 and "Practice code for the concrete production and works execution, reinforced and pre-stressed concrete:Part 2: The execution of concrete works NE 012/2-2010, and quality and the reception of the works shall be made according to Norm C-56-1985.
 5. If during the execution, discrepancies are found between the existing situation on site and the situation stated in the project, the designer will be notified.
 6. The construction has been classified in B category of importance (high important constructions), model 1-ensuring the quality and class of importance B according to G.O. 766/97.
 7. The project will be checked in order to comply with the A4.2, B2.2, D2.2 requirements.
 8. Particular attention is drawn on binding prefabricated elevations settlement on block foundation through a layer of cement mortar.



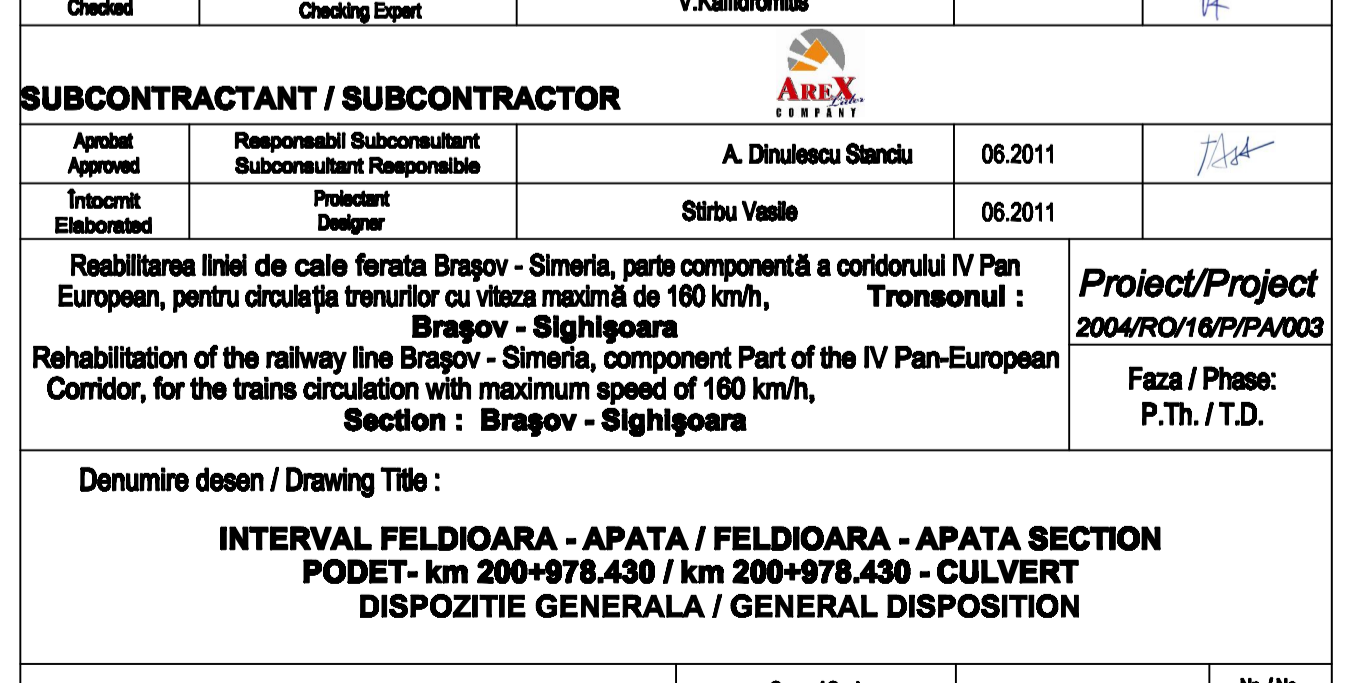
DETALII PARAPET GUARD RAIL DETAILS
 SC 1:5

NOTA
 Pe blocul de fundatie se asaza un strat de 2 cm de mortar de ciment, pentru nivelare si un strat de 1 cm pentru rezemare. Prefabricatul se asaza cu macarua, dupa care, se ridica si se observe urma lasata pe stratul de mortar. In cazul in care nu s-a realizat rezemarea pe toata suprafata, se completeaza cu mortar de ciment si se reia operatia.

NOTA
 The block foundation is laid a layer of 2 cm of cement mortar for leveling and a boundary layer of 1 cm. The prefabricated is placed by crane, after which, following the rise and there is a layer of mortar left. If there has been propping all over, make cement mortar and resume operation.



PLANUL FUNDATIILOR
FUNDATION PLAN



LEGENDA BETOANELOR
CONCRETE LIST

- Beton armat in elementele prefabricate / Reinforced concrete in the prefabricated elements: C25/45-CEMII/A-S32,5-(XC4+XF3+XA1)-A/C=0,50-Dmax22-Cl0,20
- Beton simplu in fundatia elementelor prefabricate, a drenului si a carosabilului / Plain concrete in the prefabricated elements foundations, drain and practicable side: C25/30-CEM II/A-S 32,5-(XF1)-A/C=0,50-Dmax32-Cl0,20
- Beton in stratul de protectie a hidroizolatiei / Concrete for the waterproofing protection layer: C25/30-CEMII/A-S32,5-(XC4+XF3)-A/C=0,50-Dmax16-Cl0,20

Indic	Data	Reviz	Modificari / Modifications	Stipulu Vasile	Proiectant / Designer	Approbat / Approved	Conducator / Coordinator	Verificat / Checked
A	11.2011	Revizia 1						

GUVERNUL ROMÂNIEI / ROMANIAN GOVERNMENT
PROIECT FINANȚAT DE UNIUNEA EUROPEANĂ / EUROPEAN UNION FINANCED PROJECT

CLIENT / CLIENT
C.N.C.F. "C.F.R." - S.A.

CONSULTANT / CONSULTANT
TALFERR, **Scott Wilson**, **OBERMEYER**, **TECNIC**

APROBAT / APPROVED
Verificat / Checked

SUBCONTRACTANT / SUBCONTRACTOR
AREX

Reabilitarea liniei de cale ferata Brasov - Simeria, parte componenta a coridorului IV Pan European, pentru circulela trenurilor cu viteza maxima de 160 km/h, Brasov - Sighisoara
Rehabilitation of the railway line Brasov - Simeria, component Part of the IV Pan-European Corridor, for the trains circulation with maximum speed of 160 km/h, Section : Brasov - Sighisoara

Denumire desen / Drawing Title :
INTERVAL FELDIOARA - APATA / FELDIOARA - APATA SECTION
PODET- km 200+978.430 / km 200+978.430 - CULVERT
DISPOZITIE GENERALA / GENERAL DISPOSITION

Coeficient / Coefficient System | **Scara / Scale** 1:100, 1:5 | **LOT / LOT** | **Nr./No** 01/01

E A 5 1 0 1 C 0 8 P A P 0 0 2 1 1 0 0 2 1