

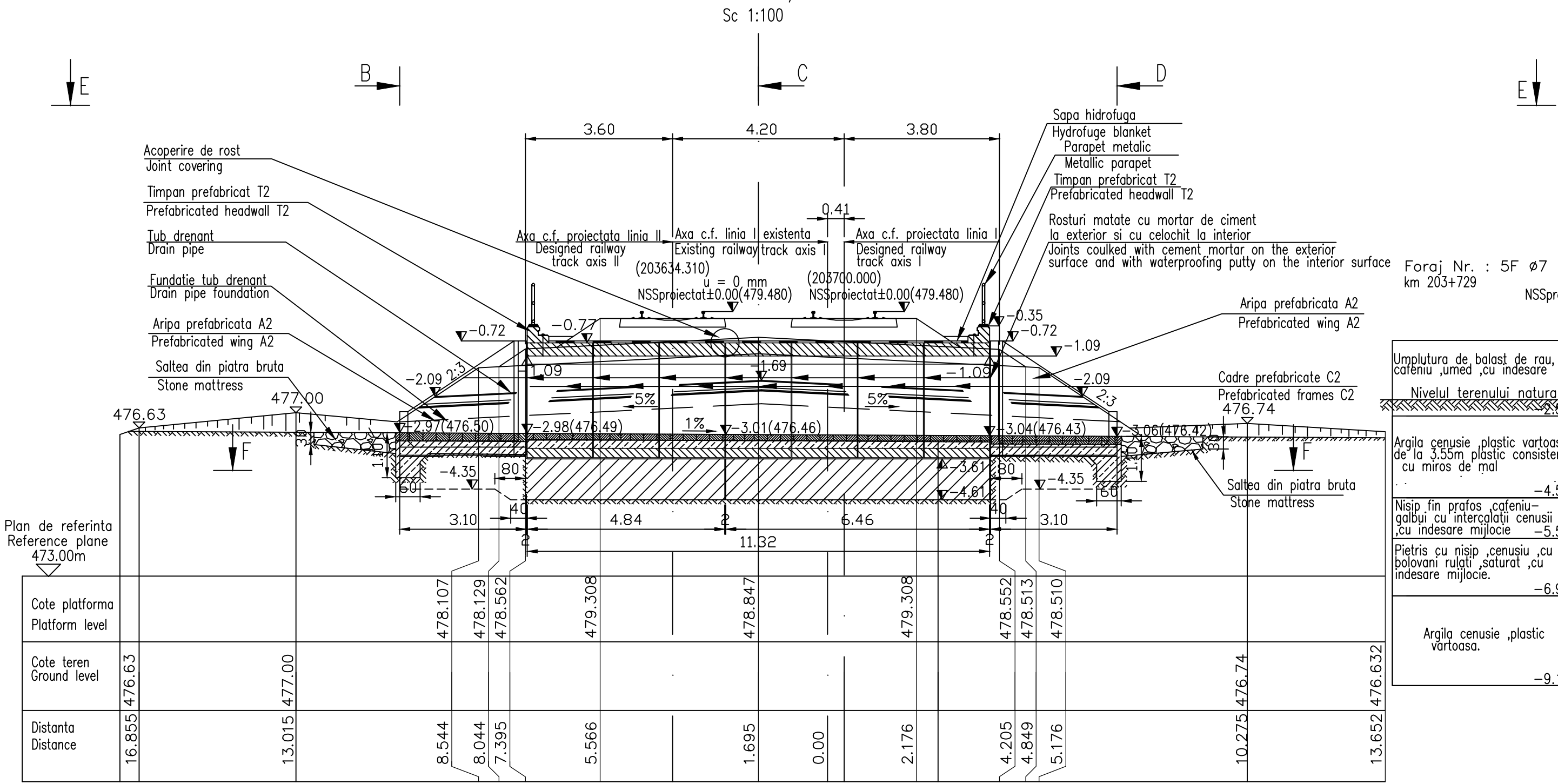
DATE HIDRAULICE	
-Inaltimea de apas in podet:	h=1.37m
-Perimetrul udat:	P=6.74m
-Aria udata=	A=5.48m ²
-Viteza de curgere apa=	V=3.66m/s

HYDRAULIC DATA	
-Hydraulic height:	h=1.37m
-Perimeter:	P=6.74m
-Surface=	5.48m ²
-Water flow speed=	V=3.66m/s

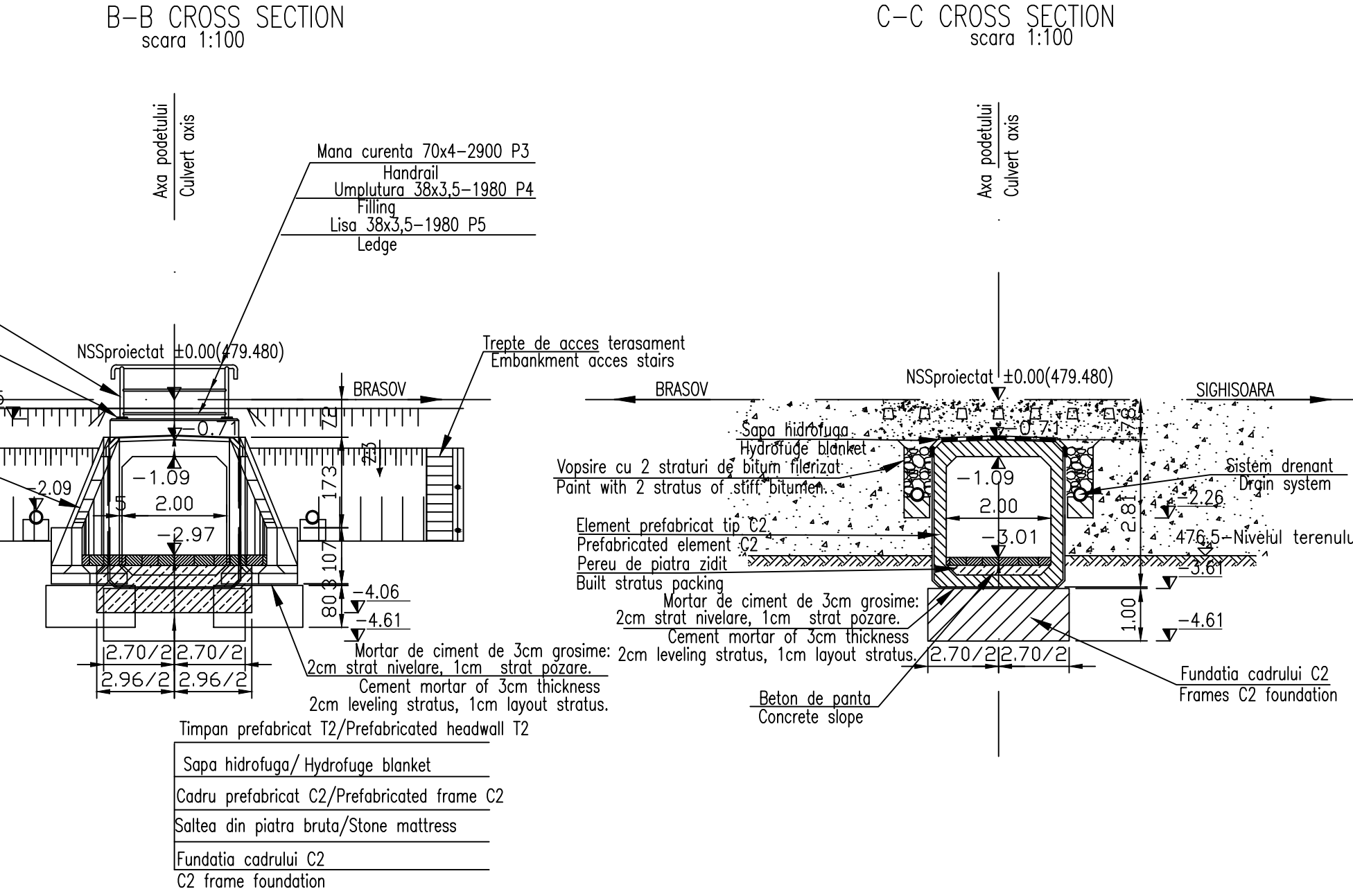
NOTA	
Numar de elemente prefabricate	
-Cadre prefabricate C2:	7buc
-Aripi prefabricate A2	4buc.
-Timpane prefabricate T2	2buc

NOTE	
Number of prefabricated sections	
-Prefabricated frames C2	7pcs.
-Prefabricated wings A2	4pcs.
-Head-wall T2	2pcs.

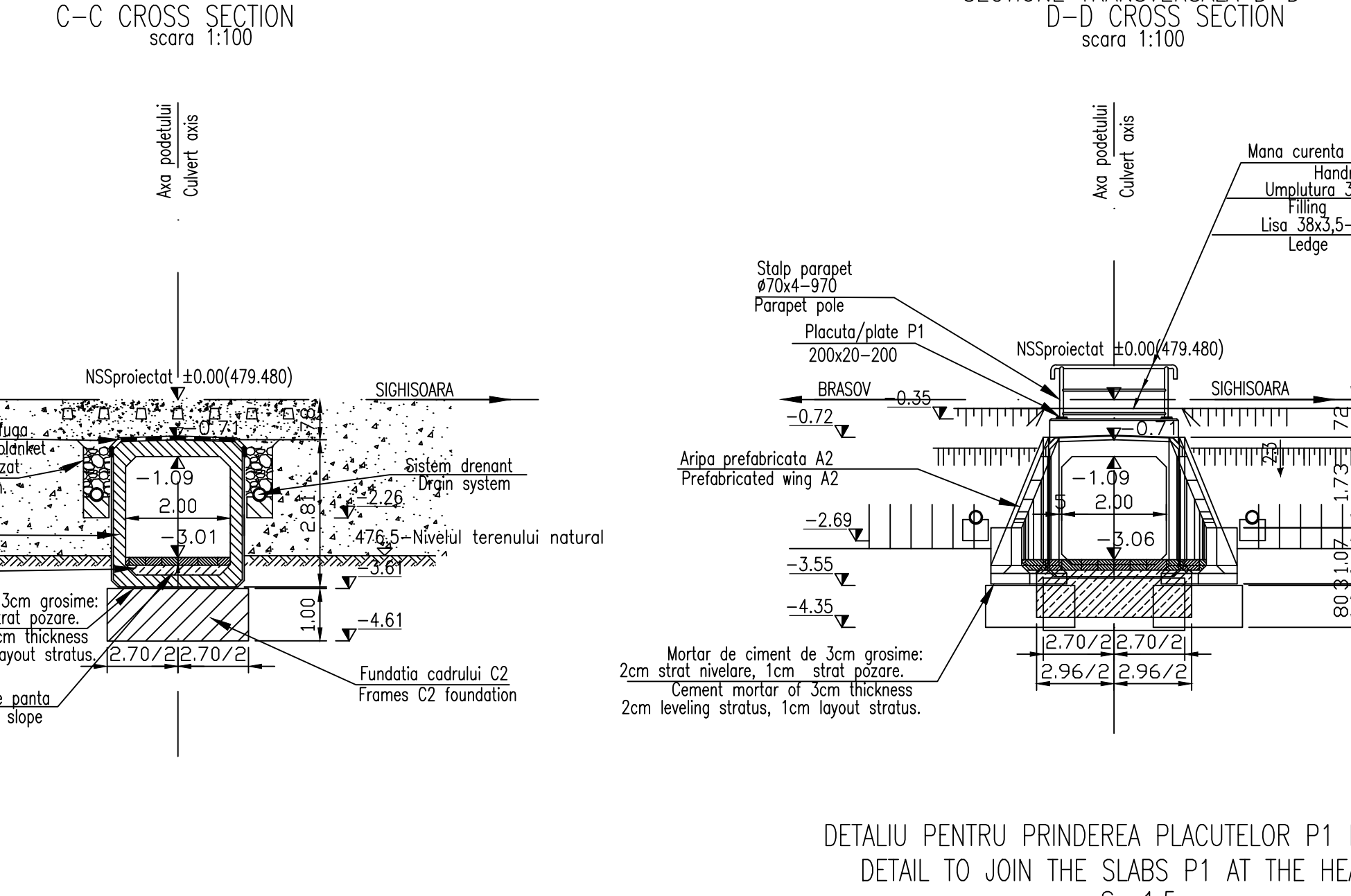
SECTIUNE LONGITUDINALA A-A / LONGITUDINAL SECTION A-A



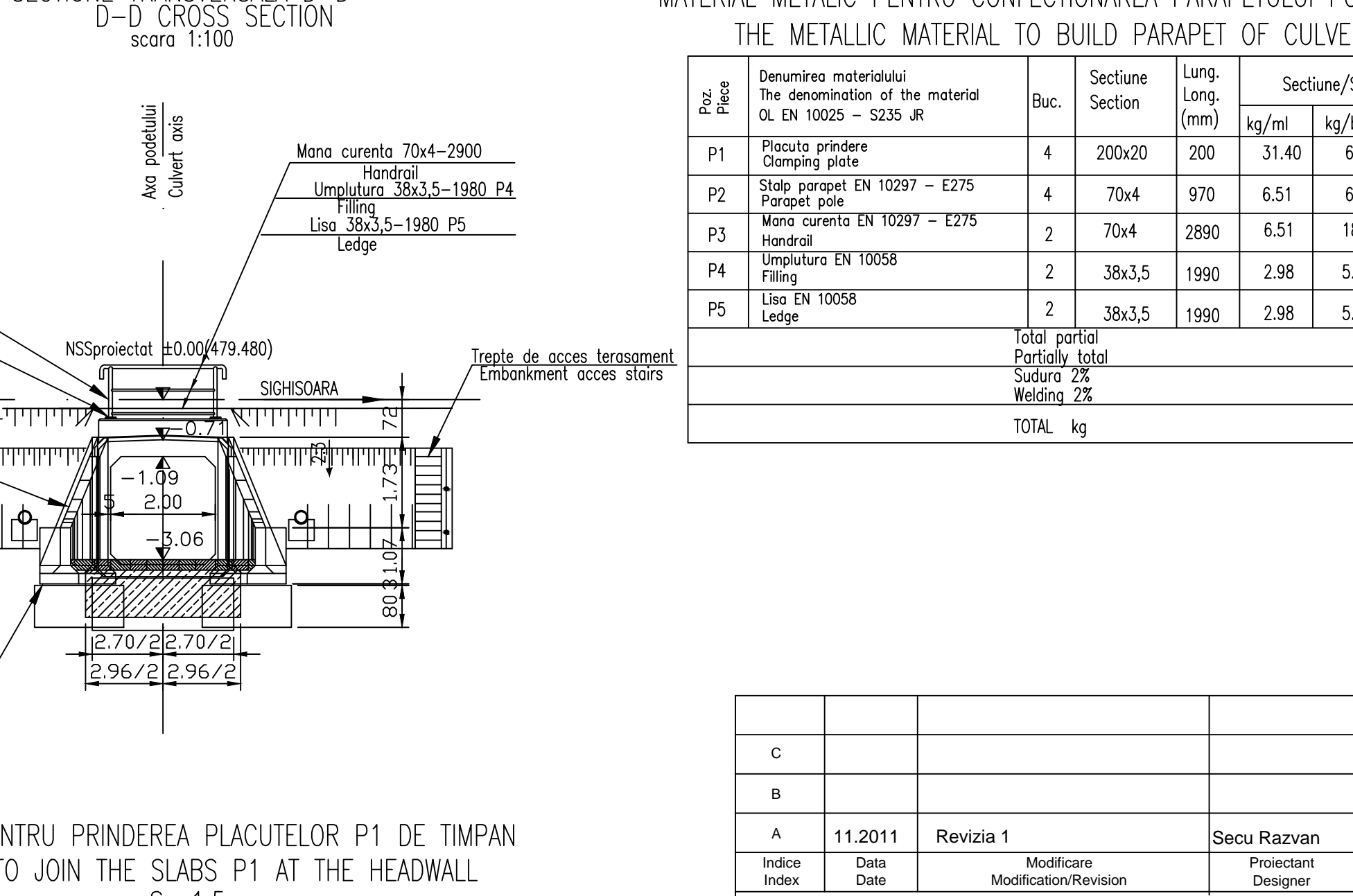
SECTIUNE TRANSVERSALA B-B / B-B CROSS SECTION



SECTIUNE TRANSVERSALA C-C / C-C CROSS SECTION



SECTIUNE TRANSVERSALA D-D / D-D CROSS SECTION



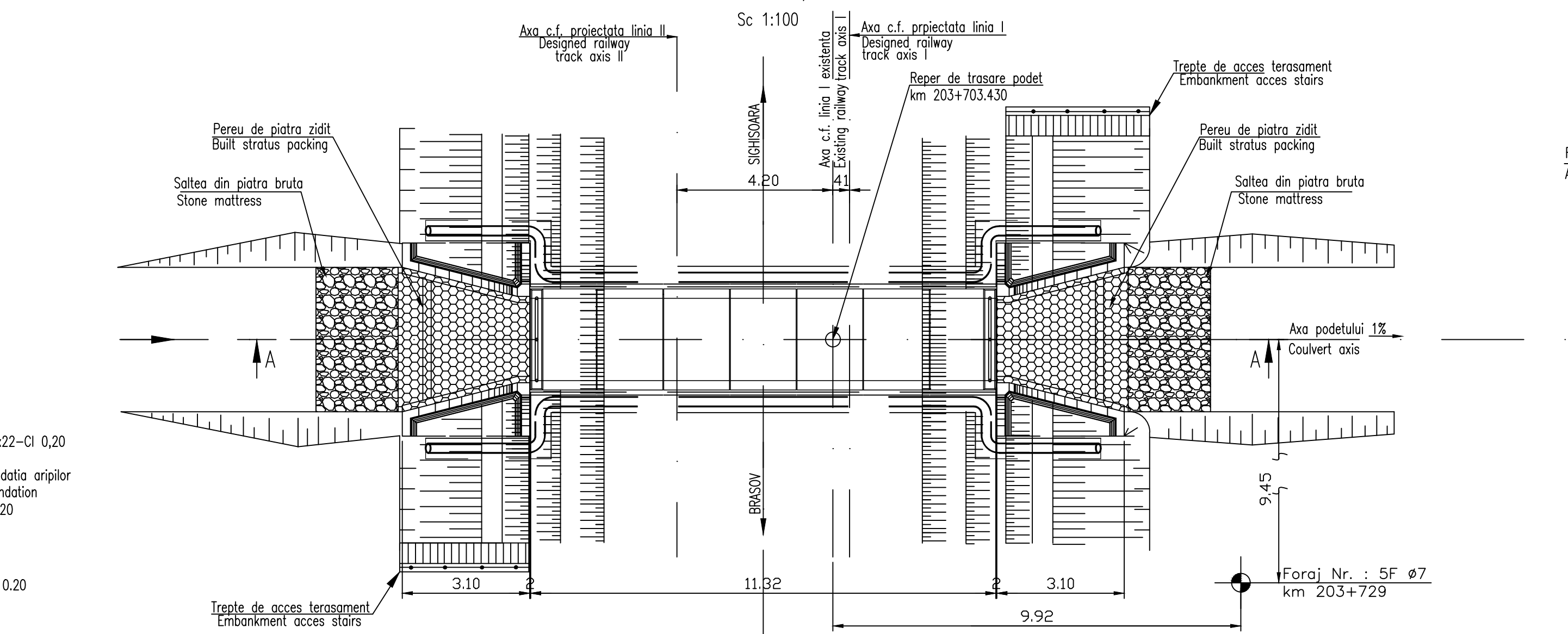
MATERIAL METALIC PENTRU CONFECTIONAREA PARAPETULUI PODETULUI / THE METALLIC MATERIAL TO BUILD PARAPET OF CULVERT

Poz. / Piece	Denumirea materialului / The denomination of the material	Buc.	Lung. / Long. (mm)	Sectiune / Section			
				kg/ml	kg/buc	kg	
P1	Placuta prindere / Clamping plate	4	200x20	200	31.40	6.28	25.12
P2	Stalpi parapet / Parapet pole	4	70x4	970	6.51	6.32	25.26
P3	Mano curenta / Handrail	2	70x4	2800	6.51	18.88	37.76
P4	Umplutura / Filling	2	38x3,5	1990	2.98	5.90	11.80
P5	Lisa / Ledge	2	38x3,5	1990	2.98	5.90	11.80
Total partial						111.74	
Sudura total						2.24	
Welding 2%						2.24	
TOTAL						115	

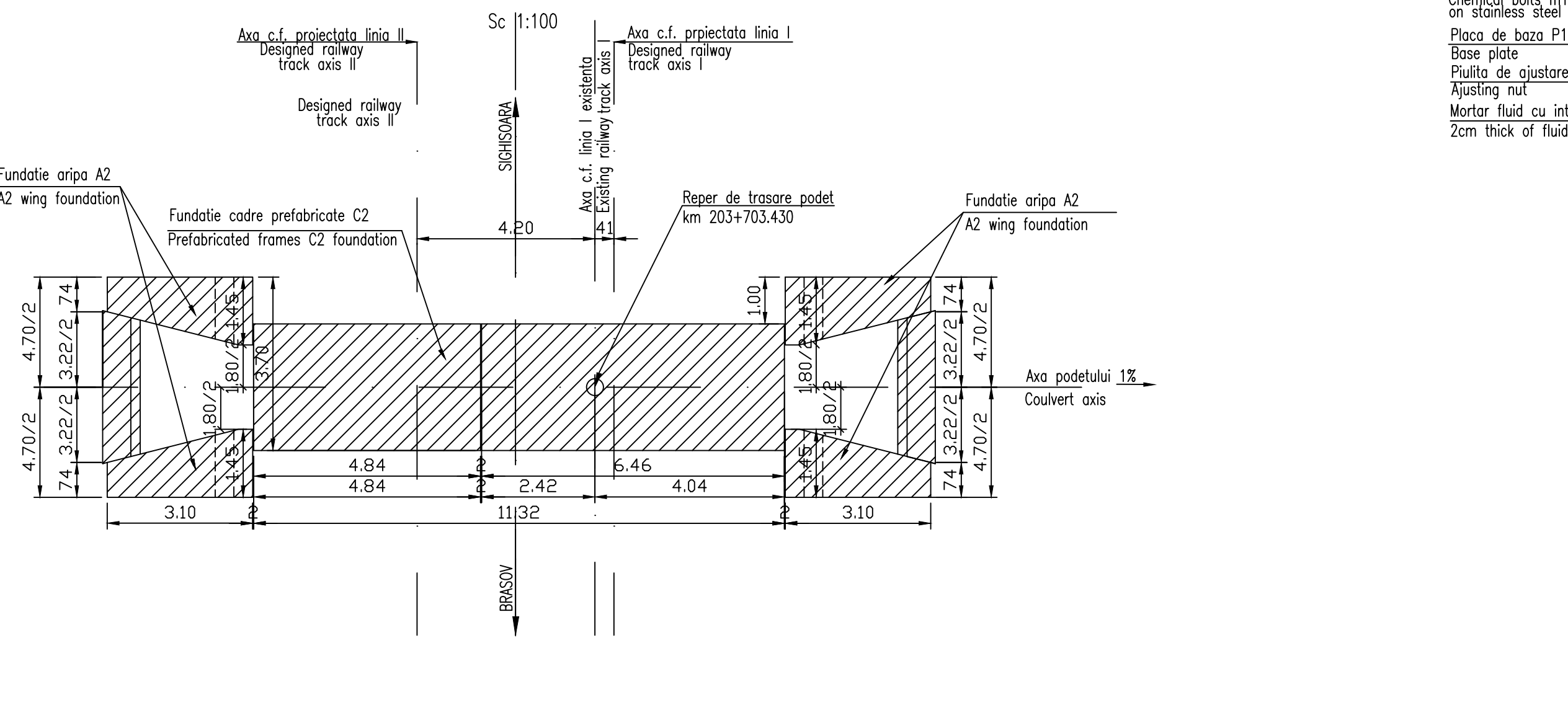
DETALIU PENTRU PRINDEREA PLACUTELOR P1 DE TIMPAN / DETAIL TO JOIN THE SLABS P1 AT THE HEADWALL



VEDERE IN PLAN E-E / E-E PLAN VIEW



PLANUL FUNDATII F-F / F-F FOUNDATIONS PLAN



LEGENDA BETOANELOR / CONCRETE LIST

	Beton armat in elementele prefabricate / Reinforced concrete in the prefabricated elements
	Beton simplu in fundatia elementelor prefabricate si in fundatia ariilor / Plain concrete in the prefabricated elements and wing foundation
	Beton simplu de panta si in pinter / Plain concrete for slope and in the corbel

NOTA:

- Prezentul plan s-a intocmit pe baza urmatoarelor date:
 - studiu geotehnic
 - plan de situatie
 - profil in lung
 - profil transversal
 - fisa podului
 - calcul hidraulic
 - date culese pe teren
- Podetul corespunde convooierilor de calcul UIC (LM71 si SW/2)
- La executie se vor respecta cu strictete prevederile din "Normativul pentru producerea betonului si executarea lucrarilor din beton, beton armat si beton precomprimat. Partea 1: producerea betonului" indicativ NE 012/1-2007 si "Normativul pentru producerea betonului si executarea lucrarilor din beton, beton armat si beton precomprimat. Partea 2: Executarea lucrarilor din beton", indicativ NE 012/2-2010, iar verificarea calitatii lucrarilor si receptionarea lor se va face conform normativului C56-1985.
- Construcția se încadrează în categoria B de importanță. Construcția de importanță deosebită, modelul 1 de asigurare a calitatii conform HG 766/97.
- Proiectul va fi verificat la cerințele A4.2; B2.2; D2.2.

NOTE:

- This plan has been drawn up based on the following data:
 - geotechnical study
 - lay-out Plan
 - Longitudinal Profile
 - Cross-section Profile
 - Bridge's File
 - Hydraulic determination
 - Field Data
- The culverts corresponds to the UIC determination convooiers (LM71 and SW/2)
- The execution will strictly comply with the provisions of "Practice code for the concrete production and works execution, reinforced and pre-stressed concrete - Part 1: Practice code for concrete production" NE 012/1-2007 and "Practice code for the concrete production and works execution, reinforced and pre-stressed concrete - Part 2: The execution of concrete works" NE 012/2-2010 and the quality and the reception of the works shall be made according to Norm C 56-1985.
- The construction has been classified in B category of importance. High important constructions, model 1-ensuring the quality according to G.O. 766/97.
- The project will be checked in order to comply with the A4.2; B2.2; D2.2 requirements.

Indice / Index	Data / Date	Modificari / Modification/Revision	Proiectant / Designer	Aprobat / Approved	Consultant / Consultant	Aprobat CFR / Approved CFR
A	11.2011	Revizia 1	Secu Razvan			

GUVERNUL ROMANIEI / ROMANIAN GOVERNMENT

PROIECT FINAN AT DE UNIUNEA EUROPEAN / EUROPEAN UNION FINANCED PROJECT

CFR

C.N.C.F. "C.F.R." - S.A.

CLIENT / CLIENT

ITALFERR GRUPPO FERROVIE DELLO STATO / JOINT VENTURE LEADER

Scott Wilson

OBERMEYER PLANEN + BERATEN GmbH

TECNIC Consulting Engineers

CONSULTANT / CONSULTANT		Data / Date	Semn. tur / Signature
Aprobat / Approved	ef proiect / Project manager	R. Liuzza	
Aprobat / Approved	Coordonator Sec. Iune 1 / Section 1 Coordinator	C. Gambelli	
Verificat / Checked	Expert Cheie / Checking Expert	V.Kallidromitis	

SUBCONTRACTANT / SUBCONTRACTOR		Data / Date	Semn. tur / Signature
Aprobat / Approved	Responsabil Subcontractant / Subcontractant Responsible	A. Dinulescu Stanciu	05.2011
Elaborat / Elaborated	Proiectant / Designer	Secu Andrei Razvan	05.2011

Reabilitarea liniei de cale ferata / Rehabilitation of the railway line

IV Pan European, pentru circula ia trenurilor cu viteza maxim de 160 km/h, / Tronsonul : Brasov - Sighisoara

Rehabilitation of the railway line Brasov - Simeria, component Part of the IV Pan-European Corridor, for the trains circulation with maximum speed of 160 km/h, / Section : Brasov - Sighisoara

Faza / Phase: P.Th. / T.D.

Denumire desen / Drawing Title:

INTERVAL FELDIOARA - APATA / SECTION FELDIOARA - APATA

PODET km 203+703.430 / DISPOZITIE GENERALA / CULVERT km 203+703.430 / GENERAL LAYOUT

Modificari / Codification System	Scara / Scale	LOT / LOT	Nr. / No
	1:100		01/01

E A 5 1 0 1 C 0 8 P A P 0 0 2 3 1 0 0 2 1