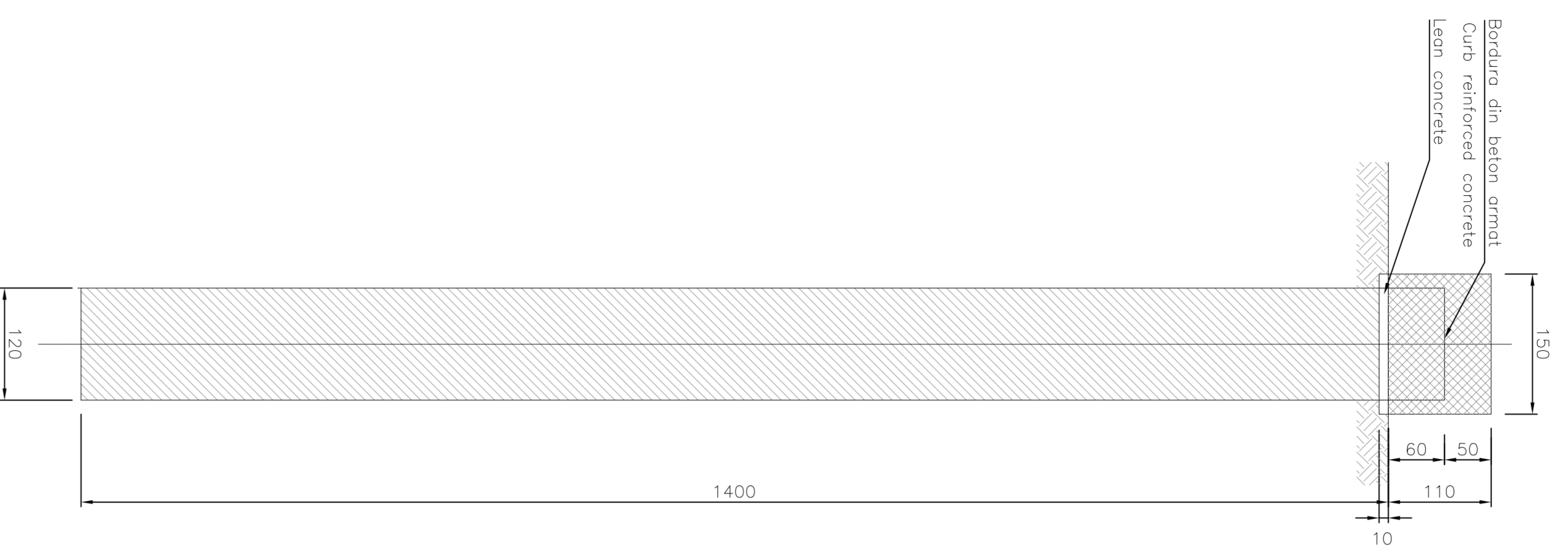
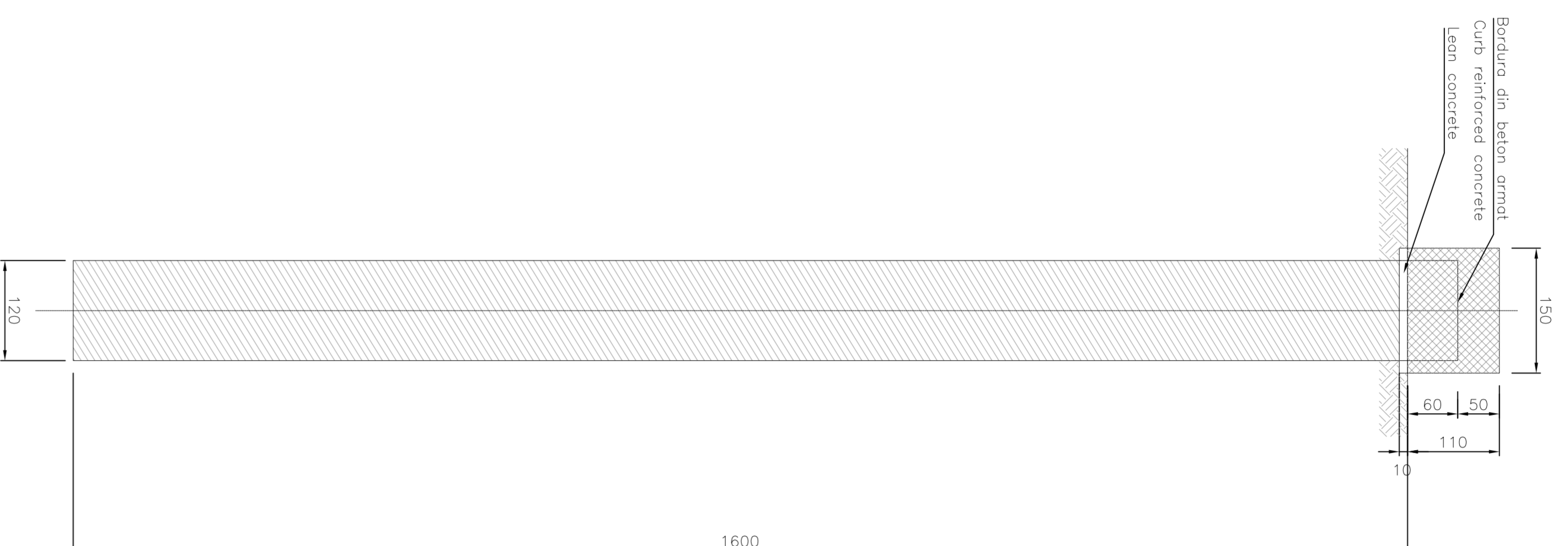


PILES WALL/PILA
 ø1200/1.30m
 H=15.00m Scale/Scara 1:50



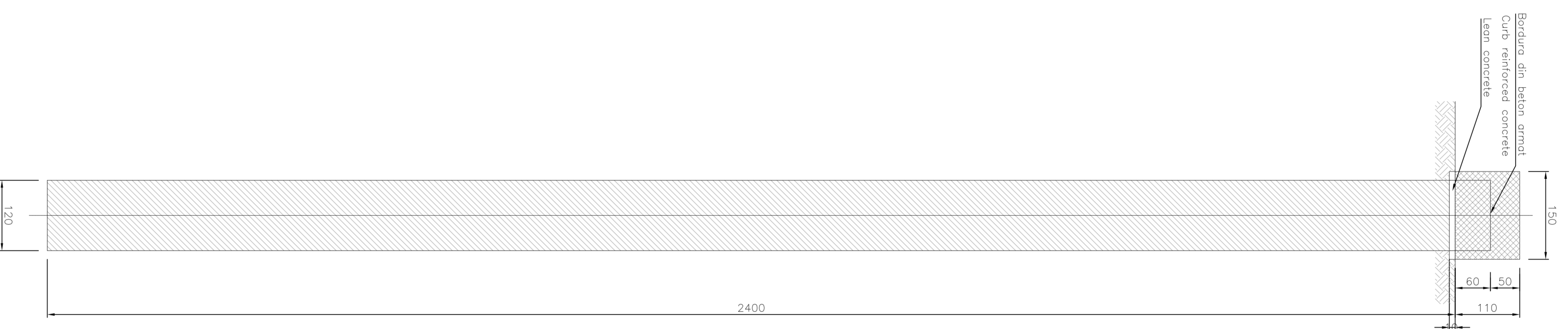
PILES WALL/PILA
 ø1200/1.30m
 H=17.00m Scale/Scara 1:50



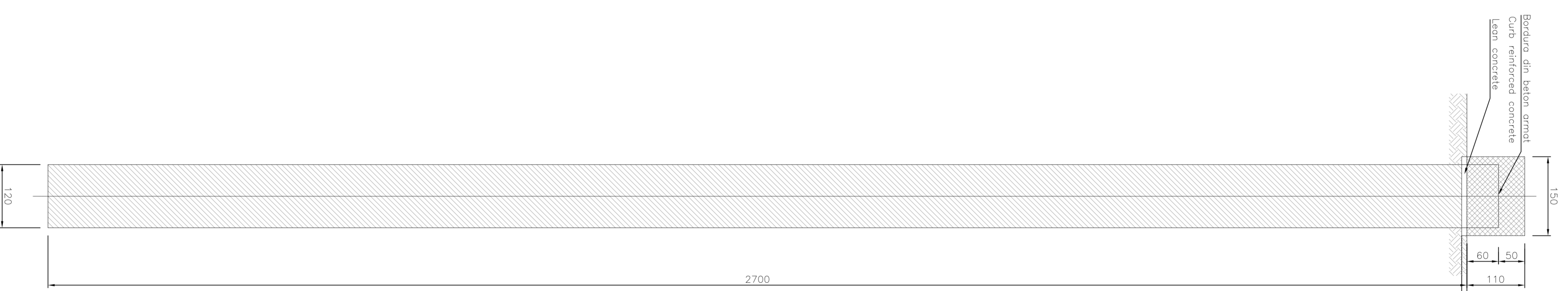
PILES WALL/PILA
 ø1200/1.30m
 H=22.00m Scale/Scara 1:50



PILES WALL/PILA
 ø1200/1.30m
 H=25.00m Scale/Scara 1:50



PILES WALL/PILA
 ø1200/1.30m
 H=28.00m Scale/Scara 1:50



MATERIAL TABLE

CONCRETE PILE

- Type H2
- fck 3-25 MPa
- ftd 1.5 MPa
- Minimum structural class S4/S5
- Cement type CEM III/V
- f max aggregate = 22.4 mm

CONCRETE CLASS

- Type H2
- Water/cement ratio 0.50
- Minimum structural class S4/S5
- Maximum aggregate size 22.4 mm
- Coef of chloride content 0.20
- f max aggregate = 22.4 mm

REINFORCING STEEL

- BRCG certified by establishment
- Weldable

LEM. CONCRETE

- Type I
- fck 3-12 MPa
- Cement type CEM I/V

0					
1					
2					
3					
4					
5					
6					
7					
8					
9					
10					
11					
12					
13					
14					
15					
16					
17					
18					
19					
20					
21					
22					
23					
24					
25					
26					
27					
28					
29					
30					
31					
32					
33					
34					
35					
36					
37					
38					
39					
40					
41					
42					
43					
44					
45					
46					
47					
48					
49					
50					
51					
52					
53					
54					
55					
56					
57					
58					
59					
60					
61					
62					
63					
64					
65					
66					
67					
68					
69					
70					
71					
72					
73					
74					
75					
76					
77					
78					
79					
80					
81					
82					
83					
84					
85					
86					
87					
88					
89					
90					
91					
92					
93					
94					
95					
96					
97					
98					
99					
100					

CLIENT / CLIENT

CONSULTANT / CONSULTANT

SUBCONSULTANT / SUBCONSULTANT

ARCHITECTURA SI SIEME

PROIECT/PROJECT

DATE

SCALE

LOT

NO.