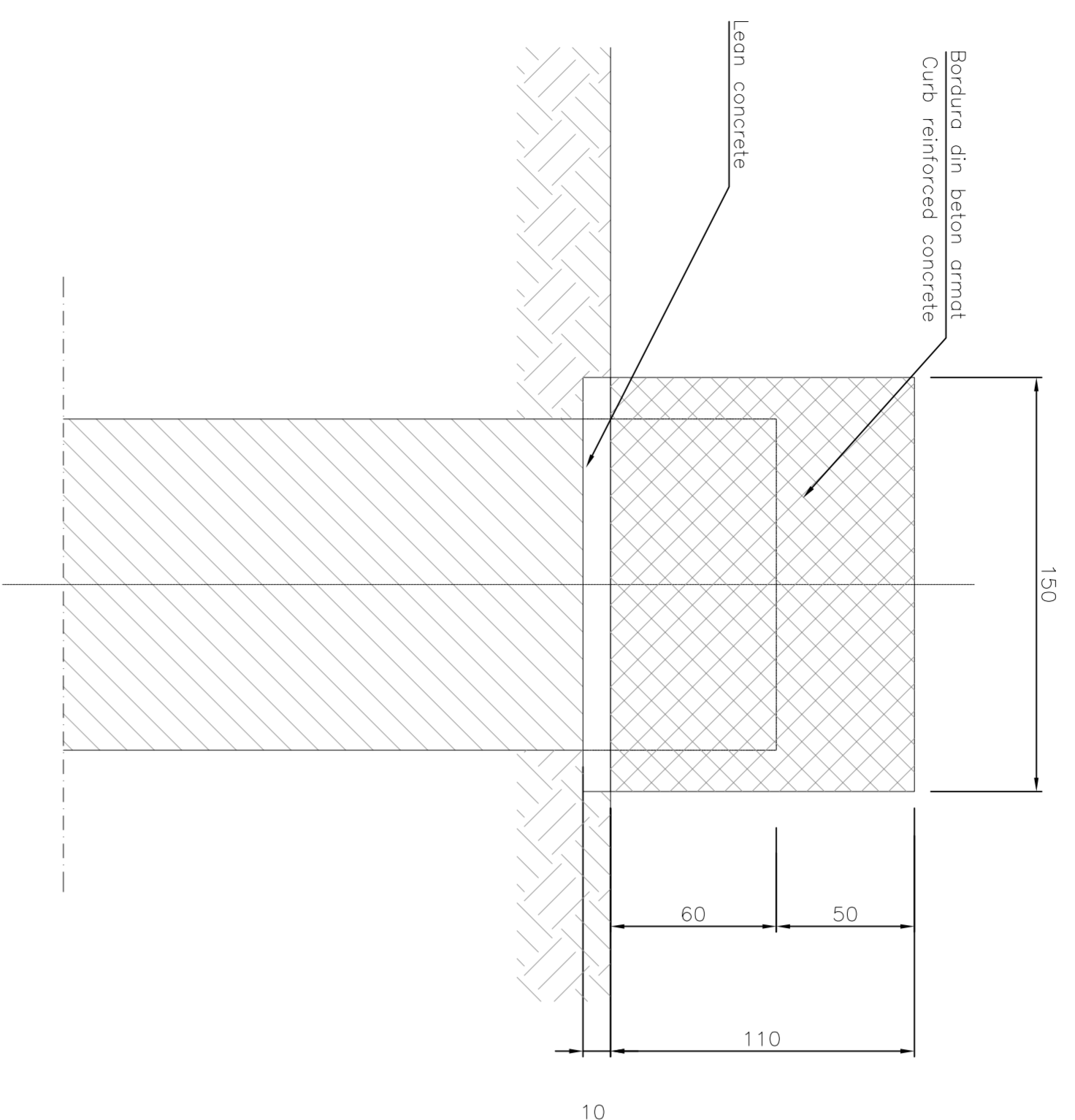
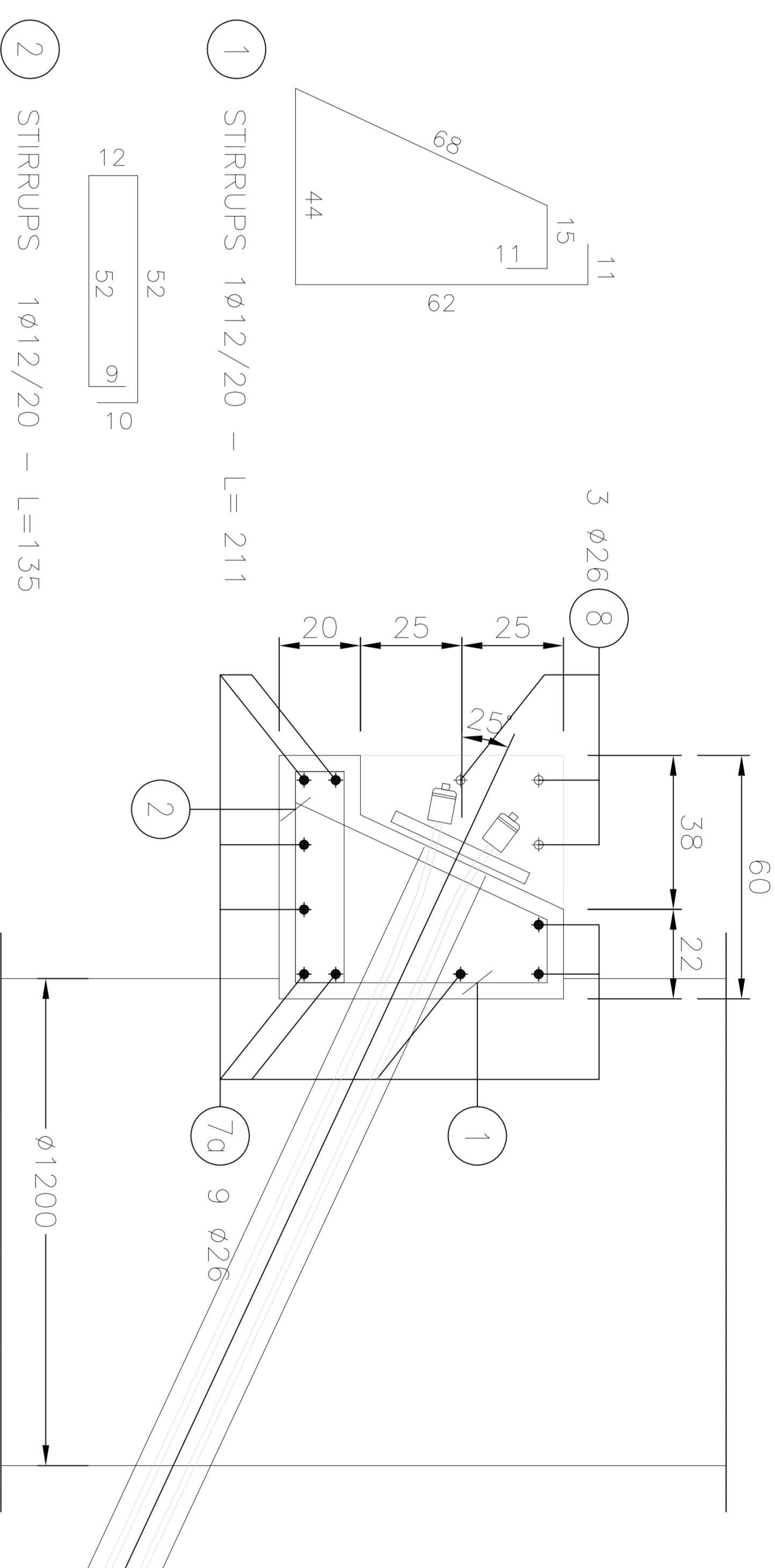


CURB REINFORCED CONCRETE
BORDURA DIN BETON ARMAT
Formworks/Cofraje
Scale/Scale 1:20

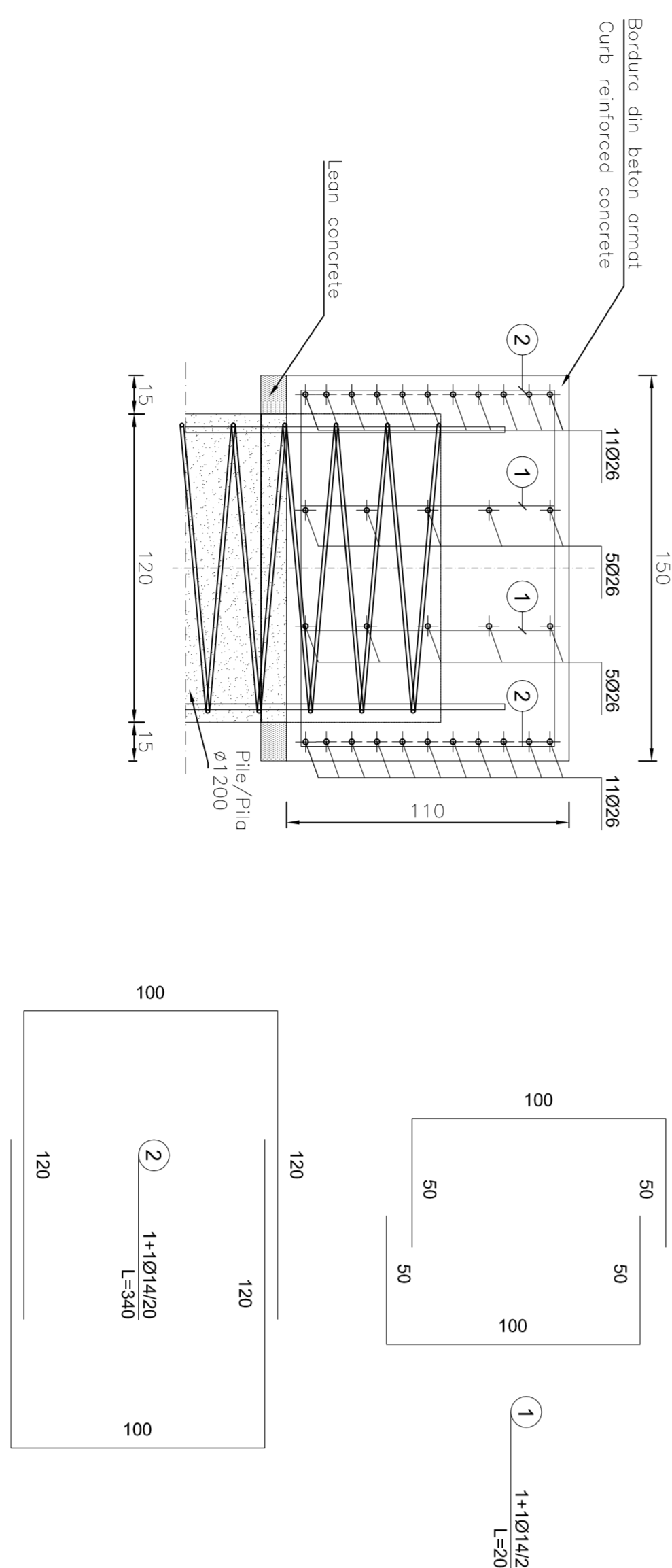


CURB REINFORCED CONCRETE WITH TENDONS-TYPE 2
BORDURA DIN BETON ARMAT CU FRANGHIE-TIP 2
Reinforcements/Armături
Scale/Scale 1:10

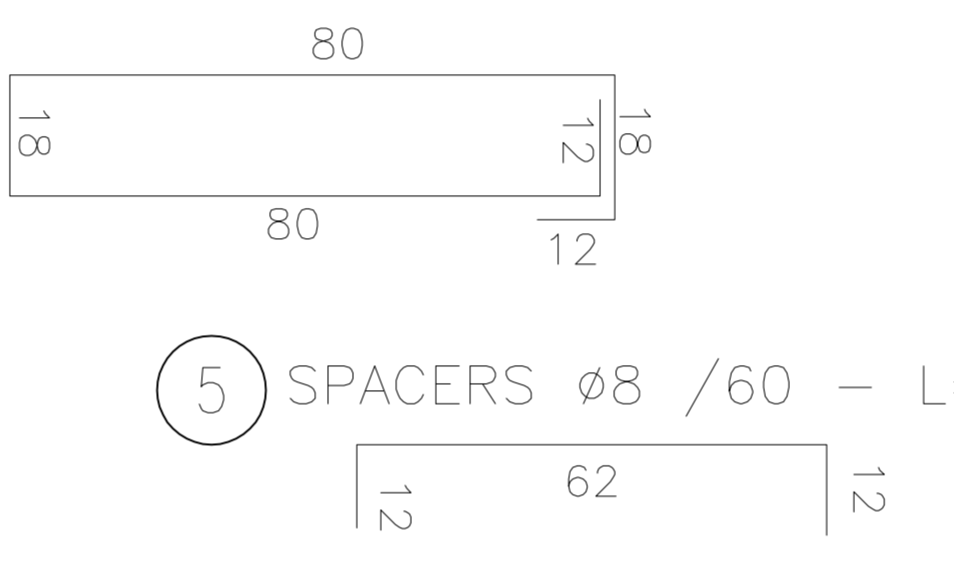


CURB REINFORCED CONCRETE - TYPICAL SECTION
BORDURA DIN BETON ARMAT - SECTIUNI TIP
Reinforcements/Armături
Scale/Scale 1:10

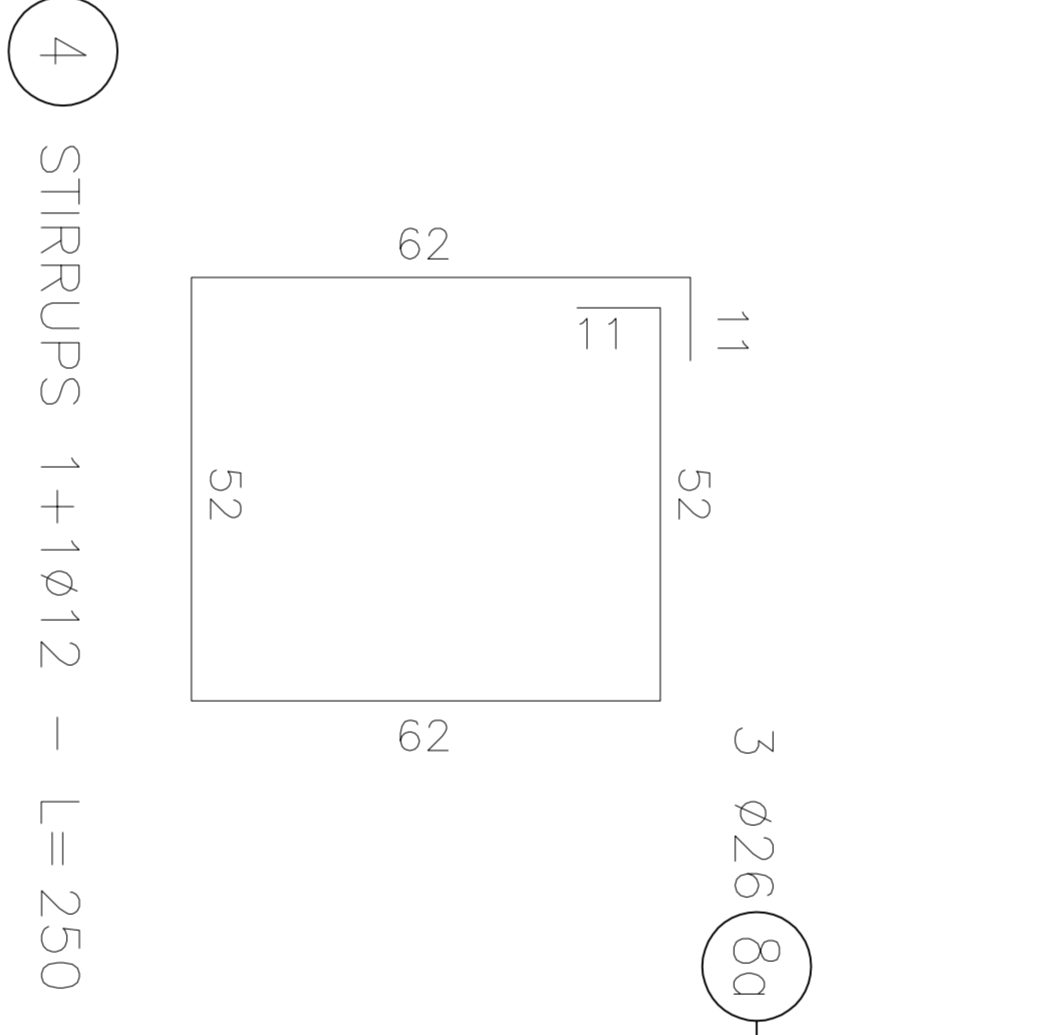
CURB REINFORCED CONCRETE -TYPE 1
BORDURA DIN BETON ARMAT-TIP 1
Reinforcements/Armături
Scale/Scale 1:20



9 STIRRUPS 1Ø12 /20 - L=220



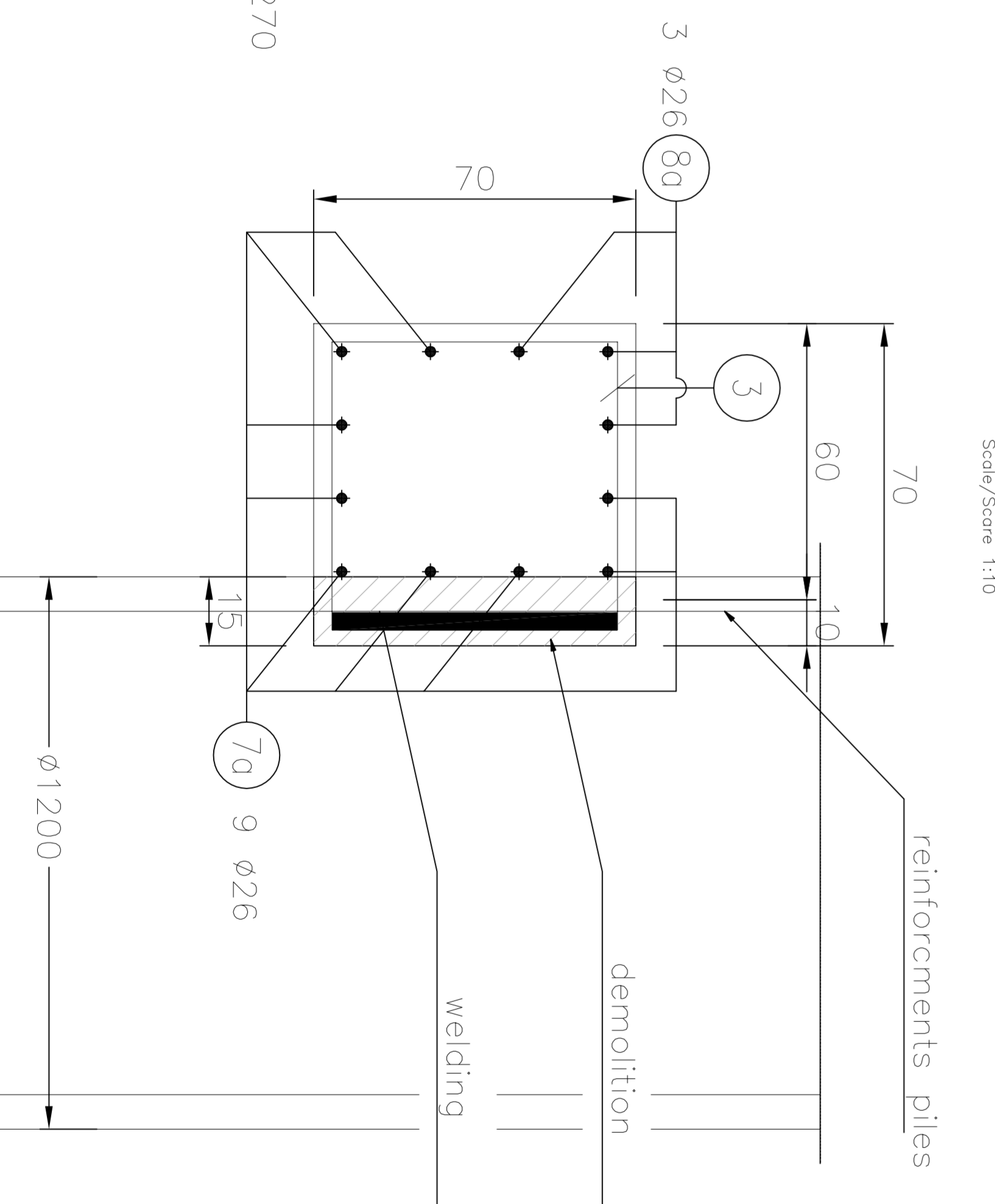
5 SPACERS Ø8 /60 - L=85



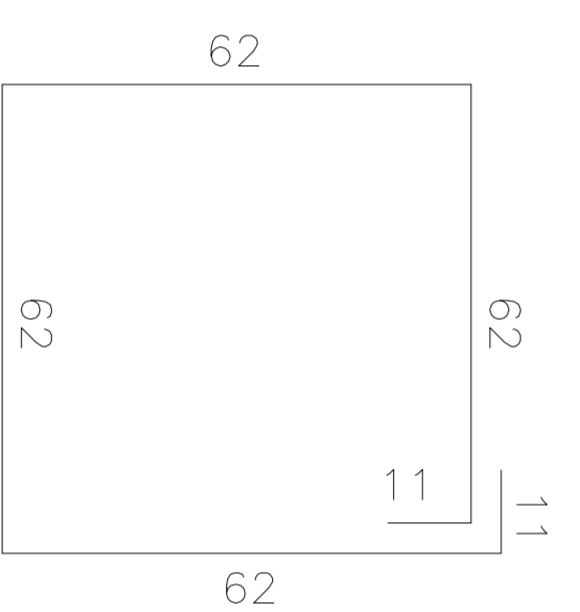
4 STIRRUPS 1+1Ø12 - L=250

6 SPACERS Ø8 /60 - L= 75

CURB REINFORCED CONCRETE ON PILES
BORDURA DIN BETON ARMAT DEASUPRA PILA
Reinforcements/Armături
Scale/Scale 1:10



3 STIRRUPS 1Ø12 - L=270
to be welded to the reinforcement rods of the pole



STEELS TABLE

Legend measures:

REINFORCING STEEL
- B450C (redacted)

Bending diameter $d_b \cdot 1$
 d Bar < 20 -> $d_b = 6d$
 d Bar 20-408 -> $d_b = 8d$

MATERIAL TABLE

CONCRETE PILE:
 - Type H2
 - $d_k >= 25$ Min 9
 - Max/Content ratio: 40/130
 - Min/Content ratio: 30/100
 - Cement type: CEM III/V - 42.5
 - f max appropriate = 22.4 mm

CONCRETE CURB:
 - Type H2
 - $d_k >= 12$ Min 4
 - Max/Content ratio: 40/130
 - Min/Content ratio: 30/100
 - Cement type: CEM III/V - 42.5
 - f max appropriate = 22.4 mm

REINFORCING STEEL:
 - Section controlled by establishment
 - Method
 - LEAN CONCRETE
 - Type 1
 - $d_k >= 12$ Min 4
 - Cement type: CEM III/V

0									
1									
2									
3									
4									
5									
6									
7									
8									
9									
10									
11									
12									
13									
14									
15									
16									
17									
18									
19									
20									
21									
22									
23									
24									
25									
26									
27									
28									
29									
30									
31									
32									
33									
34									
35									
36									
37									
38									
39									
40									
41									
42									
43									
44									
45									
46									
47									
48									
49									
50									
51									
52									
53									
54									
55									
56									
57									
58									
59									
60									
61									
62									
63									
64									
65									
66									
67									
68									
69									
70									
71									
72									
73									
74									
75									
76									
77									
78									
79									
80									
81									
82									
83									
84									
85									
86									
87									
88									
89									
90									
91									
92									
93									
94									
95									
96									
97									
98									
99									
100									

Scale/Scale 1:10

CLIENT / CLIENT
CFR
CN.C.F. "C.F.R." - S.A.

CONSULTANT / CONSULTANT
TECNIC
OBERMEYER
JOHN - BERBERNIG SMH
Consulting Engineers

PROIECT FINANȚATE DE UNIUNEA EUROPEANĂ
 EUROPEAN UNION FINANCED PROJECT

PROIECT/PROJECT
 Z0404R02/16/27/2002
 Faaza /Phase:
 P.1h. /1.D.