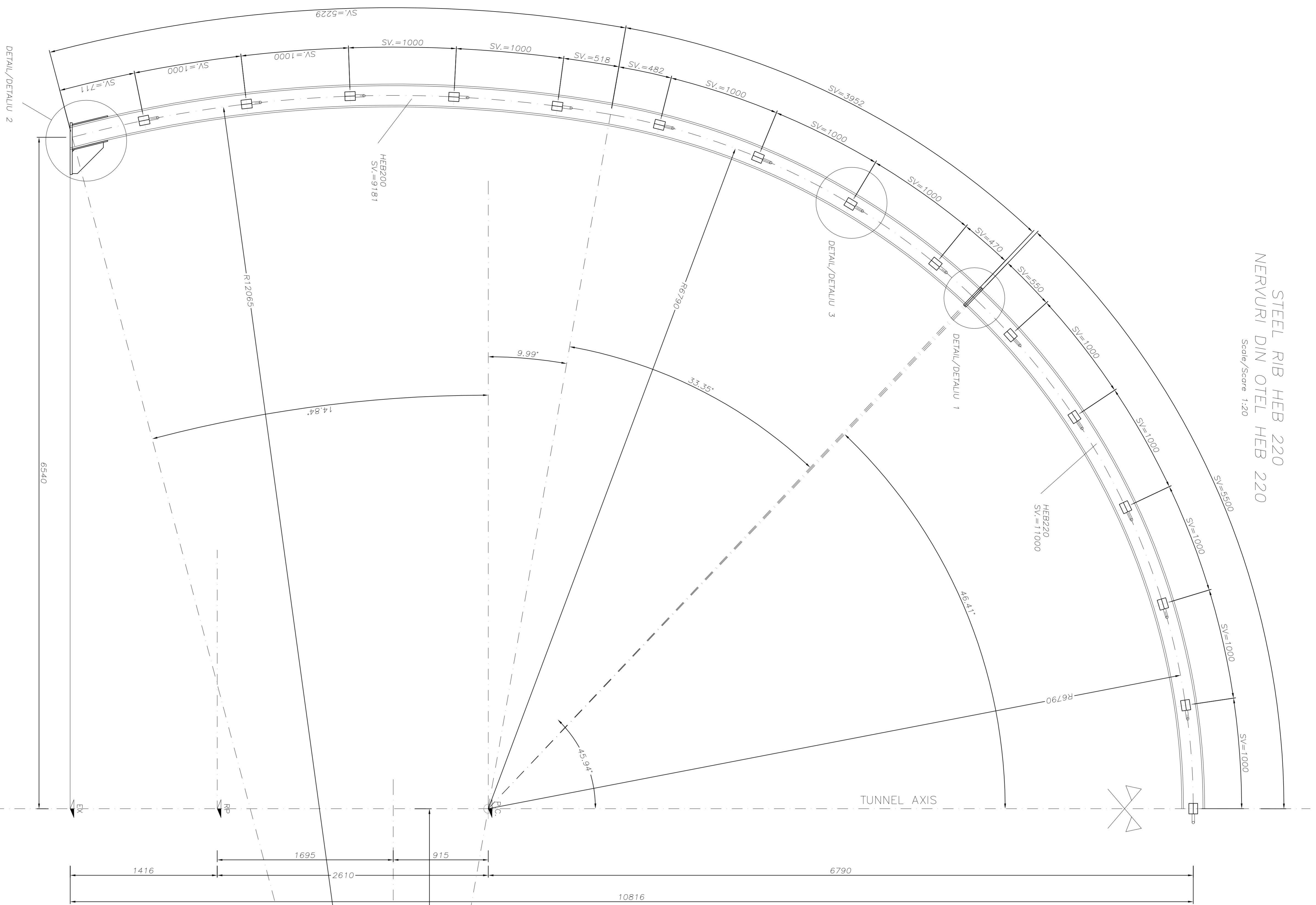


STEEL RIB HEB 220
NERVURI DIN OTEL HEB 220

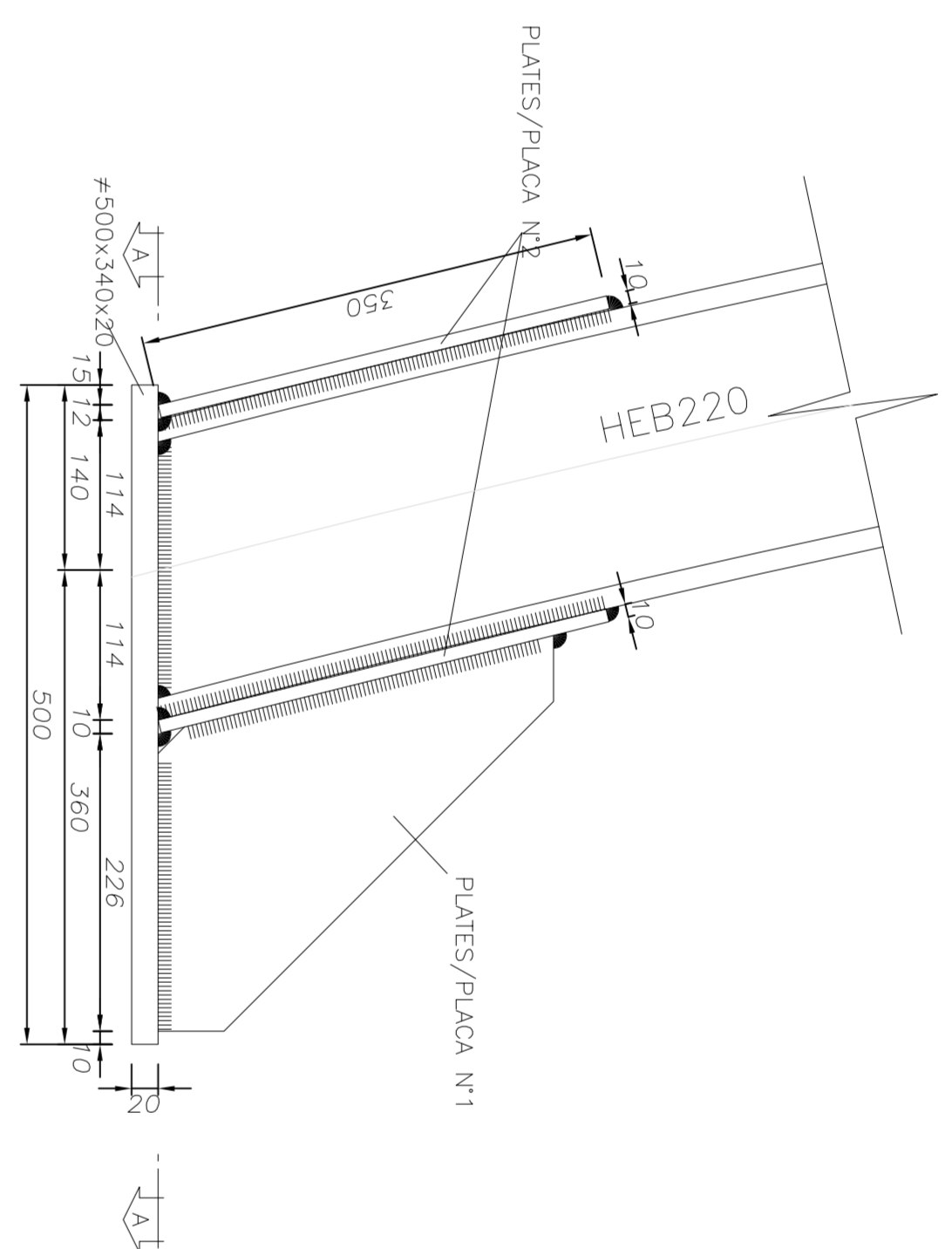
Scale/Scara 1:20



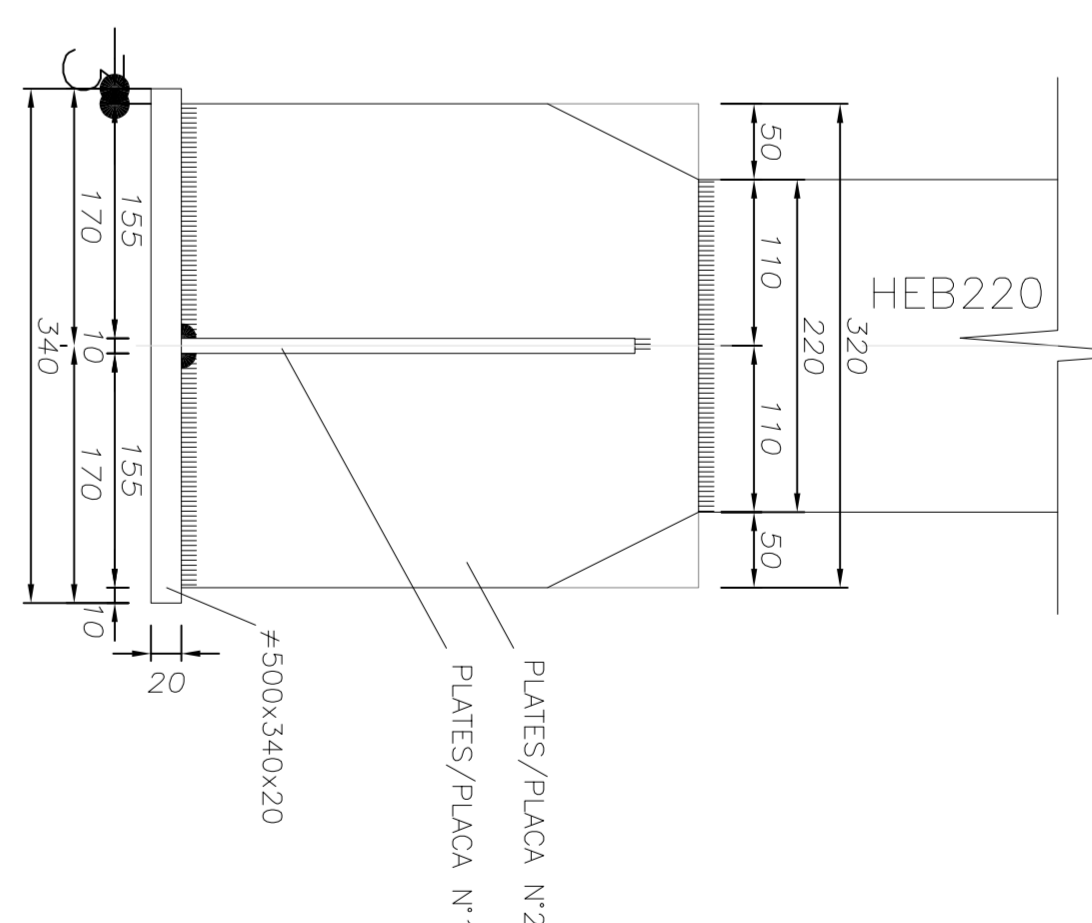
SIDE

DETAIL "1"
DETALIU "1"

Scale/Scara 1:5

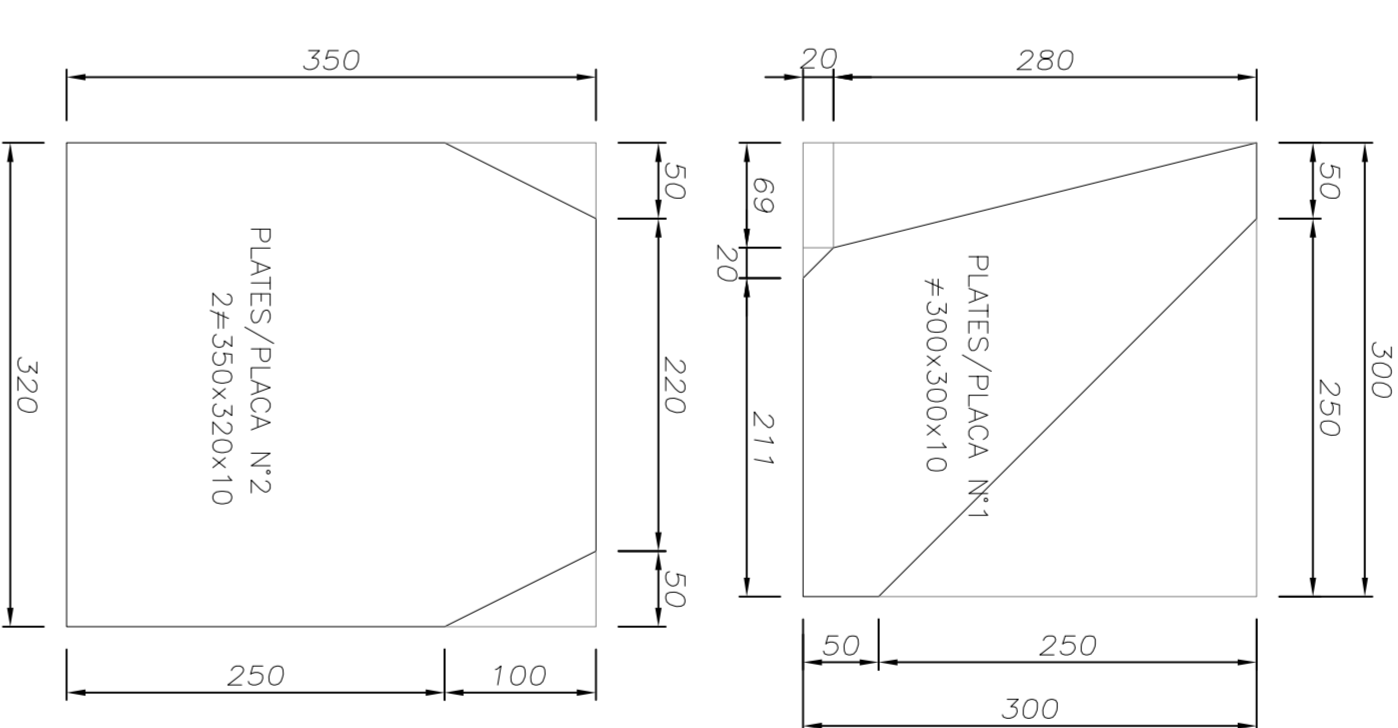
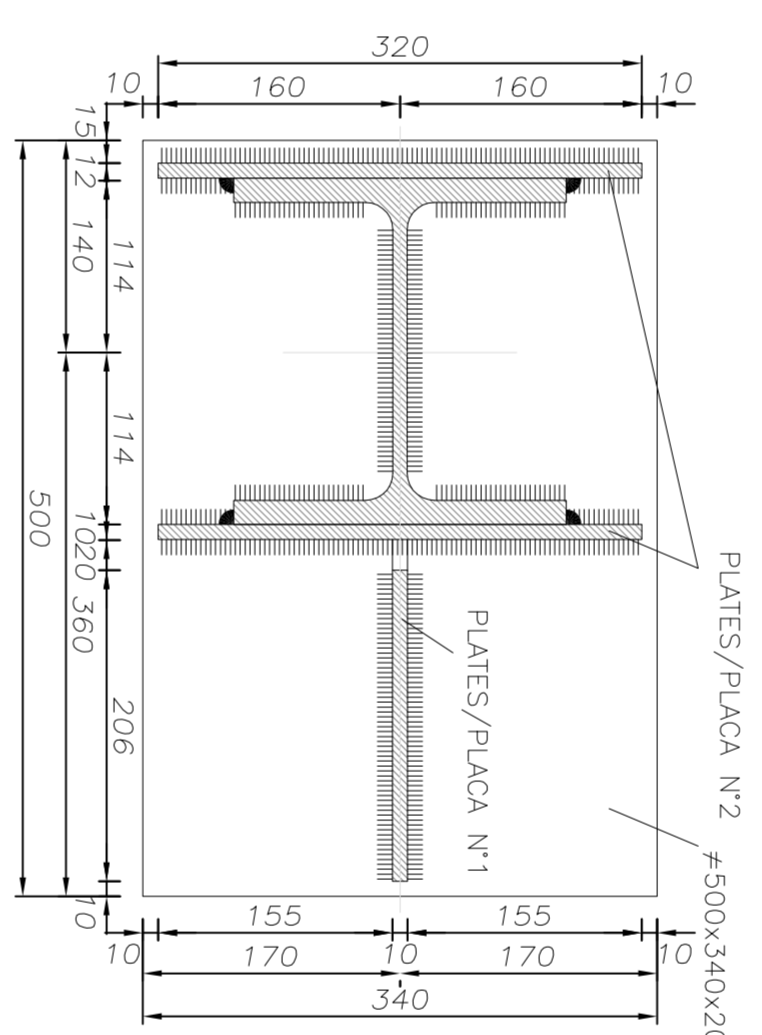


FRONT



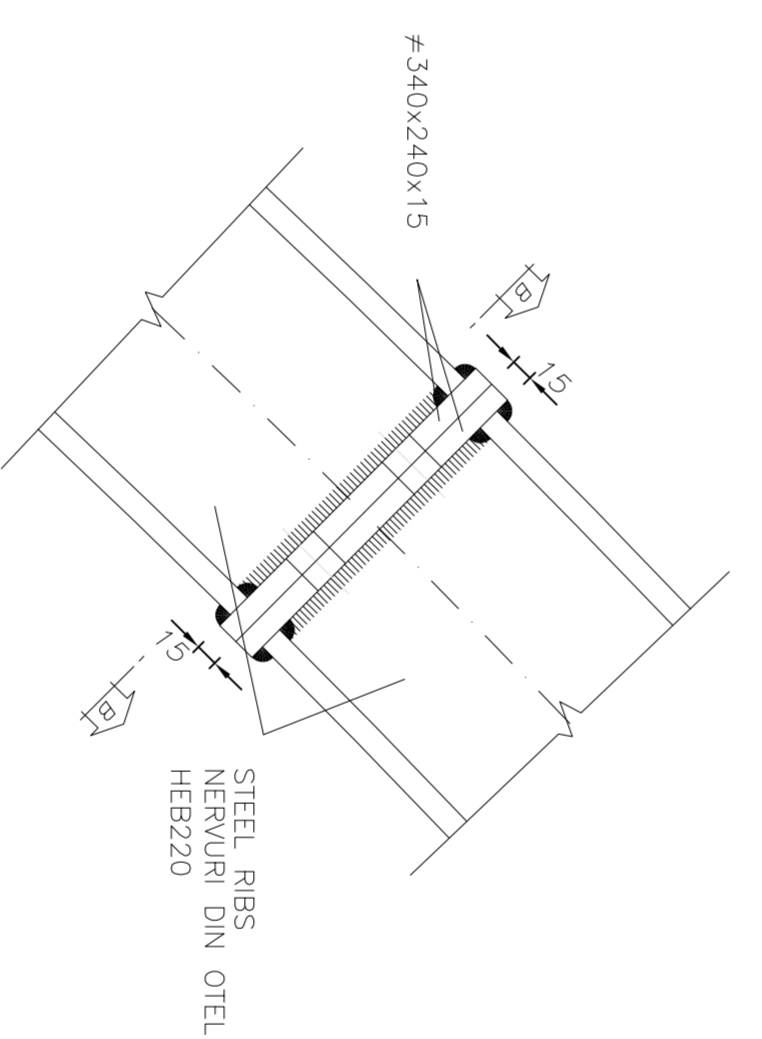
SECTION A-A
SECTIUNEA A-A

Scale/Scara 1:5



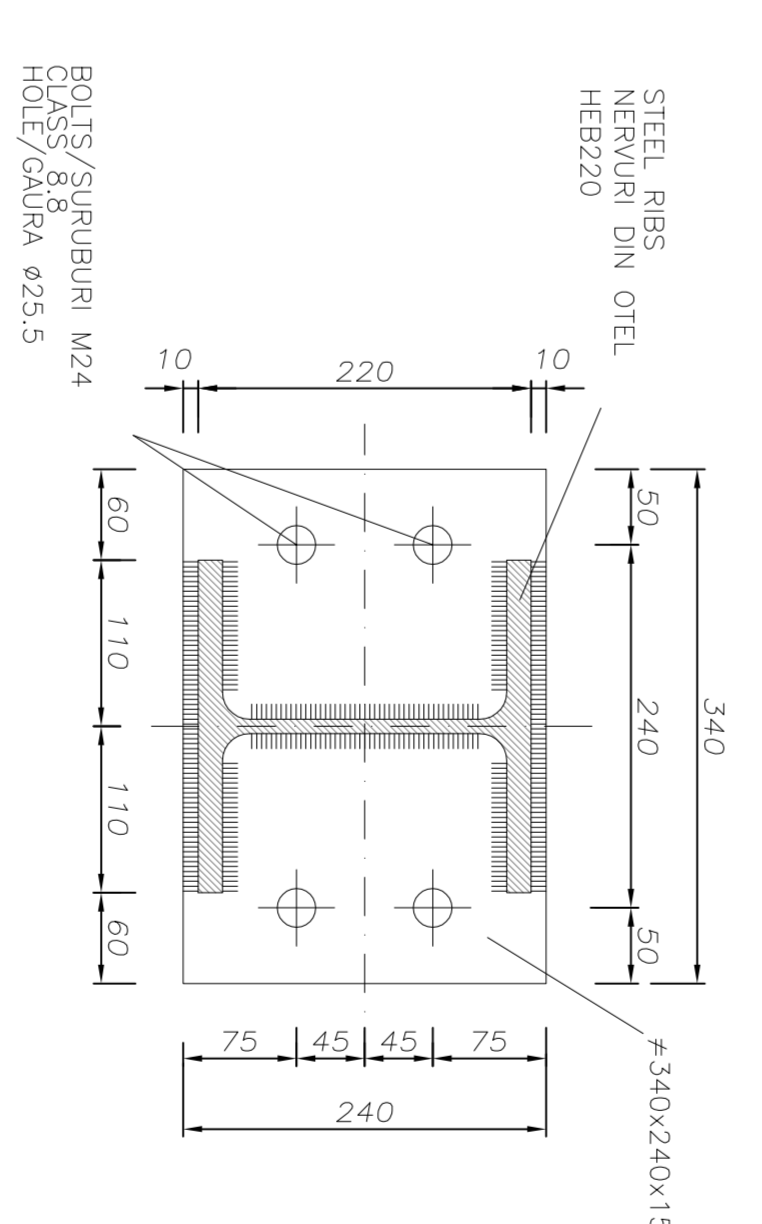
DETAIL "2"
DETALIU "2"

Scale/Scara 1:5



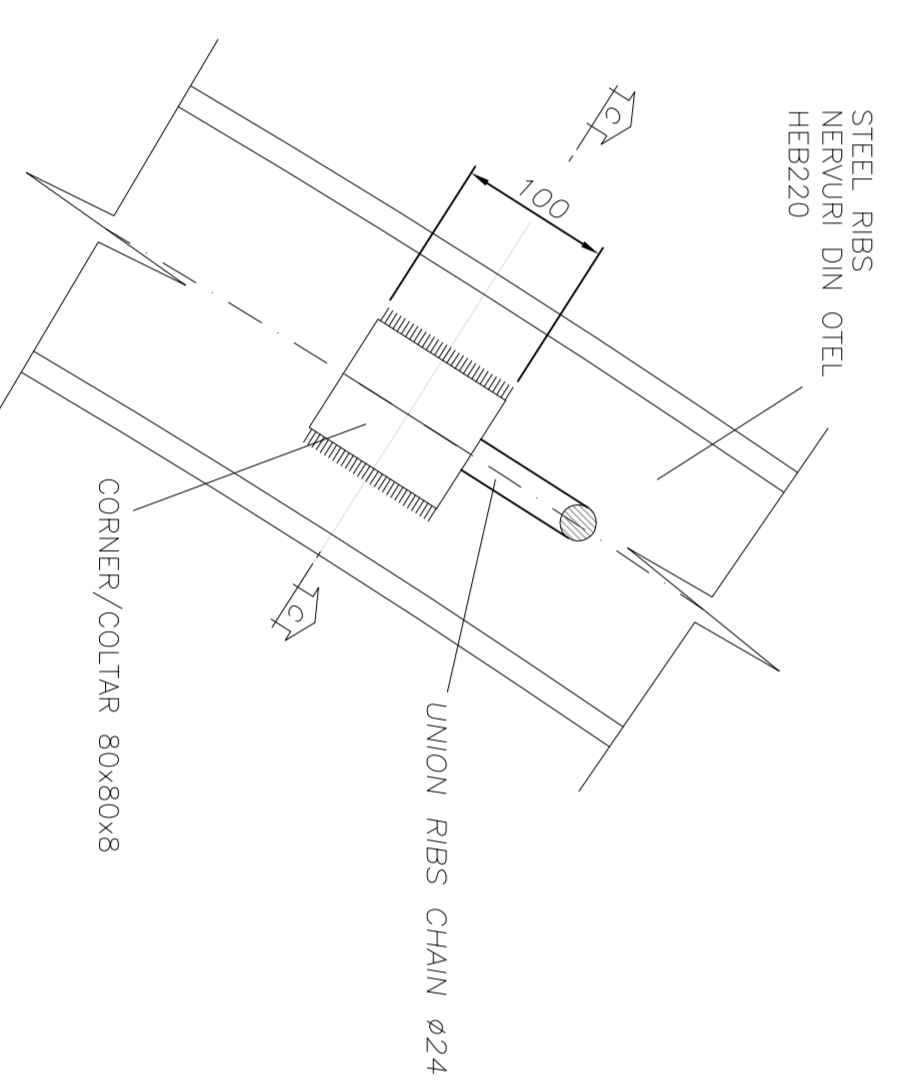
SECTION B-B
SECTIUNEA B-B

Scale/Scara 1:5



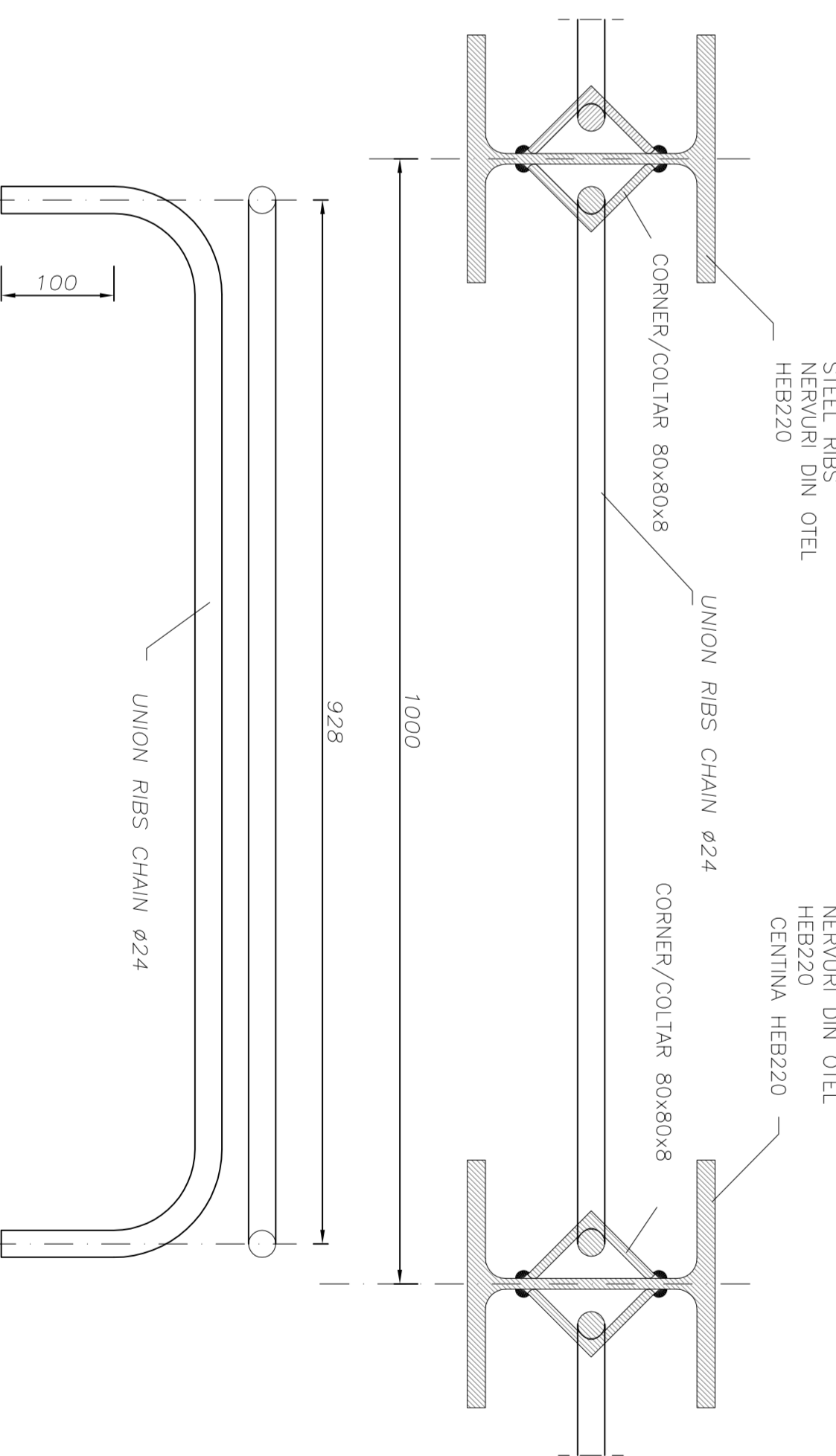
DETAIL "3"
DETALIU "3"

Scale/Scara 1:5



SECTION C-C
SECTIUNEA C-C

Scale/Scara 1:5



MATERIAL TABLE

RIBS, PLATE, STEERING, BRACKET, CORNER :
- S 275 430 M96
- S 275 275 M93
CHAINS :
- B480C covered by endorsement
= Welded

TABLEAU DE MATERIALE

MEMBRU, DE OTEL, SECTIUNEA CUBRITATE, CADREU DE PRODUCARE, LAMINARI :
- S 275 430 M96
- S 275 275 M93
LANTE :
- B480C contractat de catre unitate
= Sudat

LEGEND
RP = REFERENCE PLANE
EX = EXCAVATIONS PLANE
PC = CENTERS PLANE

Index	Date	Modificari/Modifications	Proiectant/Designer	Verificator/Checker	Acordat/Approved
A					
B					
C					
D					

CLIENT / CLIENT

GOVERNUL ROMANIEI
ROMANIAN GOVERNMENT
PROIECT FINANCIAT DE UNIUNEA EUROPEANA
EUROPEAN UNION FINANCED PROJECT

CONSULTANT / CONSULTANT

TECHNIC
CONSULTING ENGINEERS

SUBCONSULTANT / SUBCONSULTANT

ARHITECTURA
ARCHITECTURE

Coloana / Column	1	2	3	4	5	6	7	8	9
EA	1	0	1	C	1	4	B	B	G
1	0	1	0	1	0	0	0	0	0