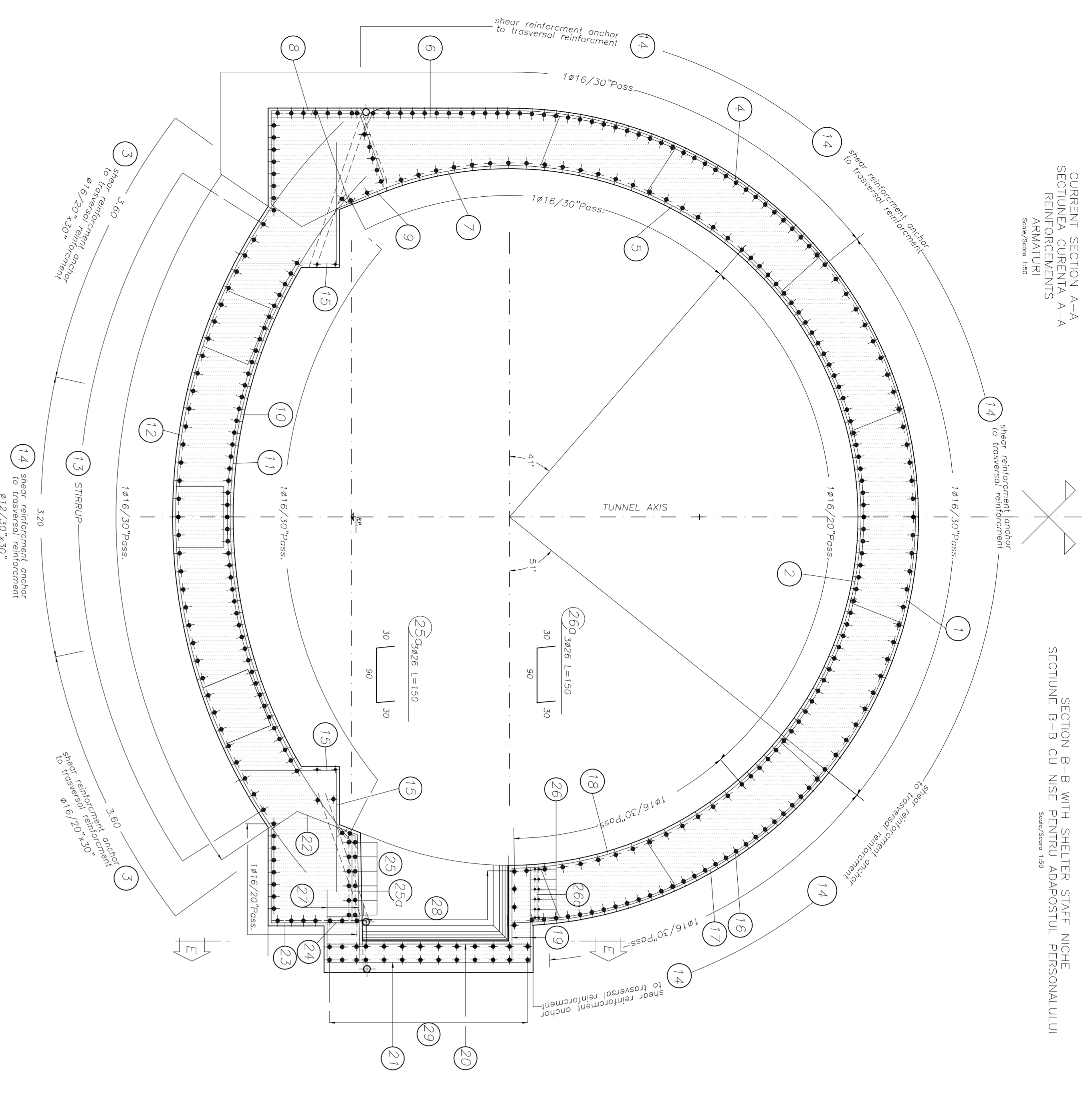
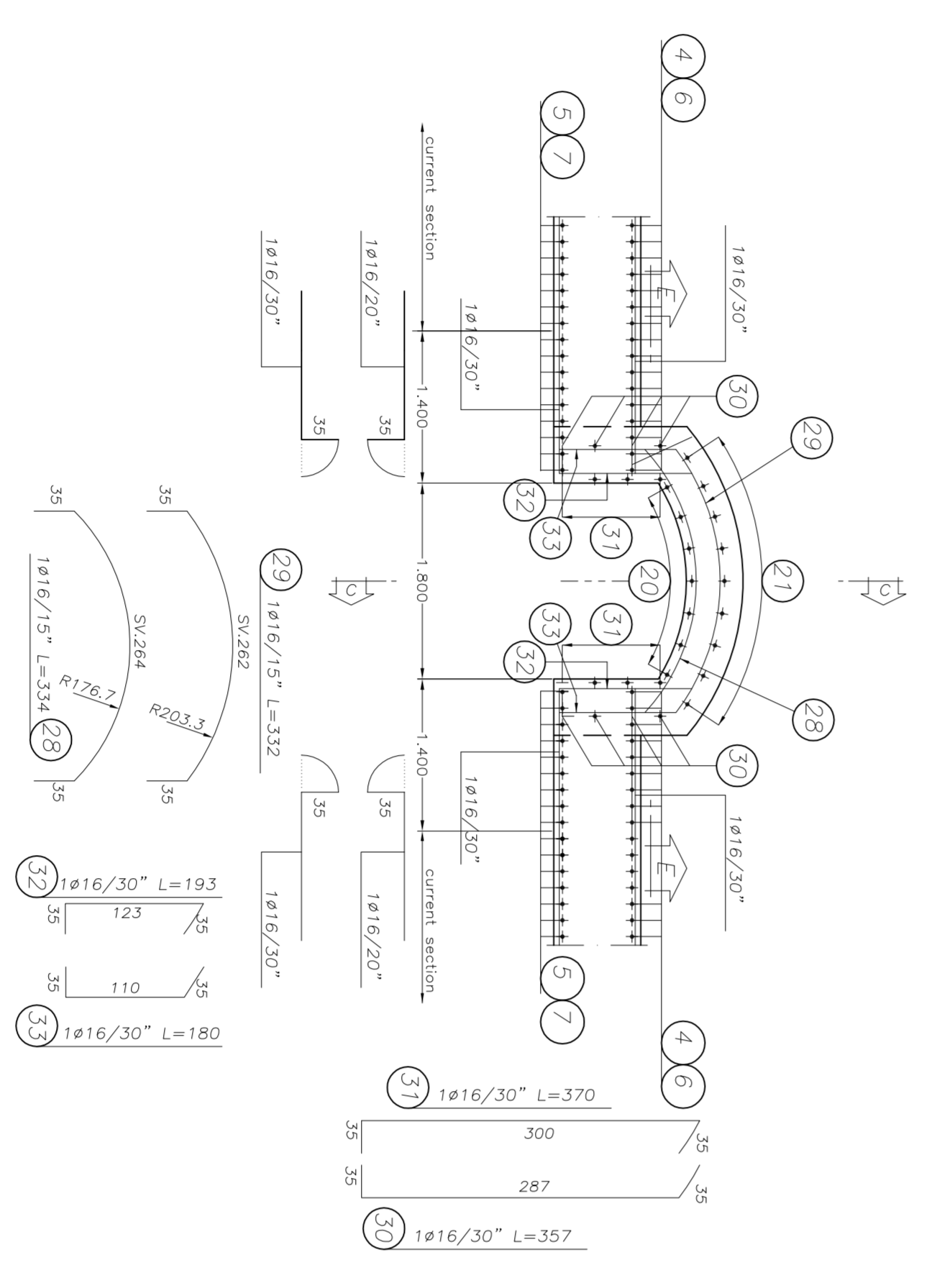


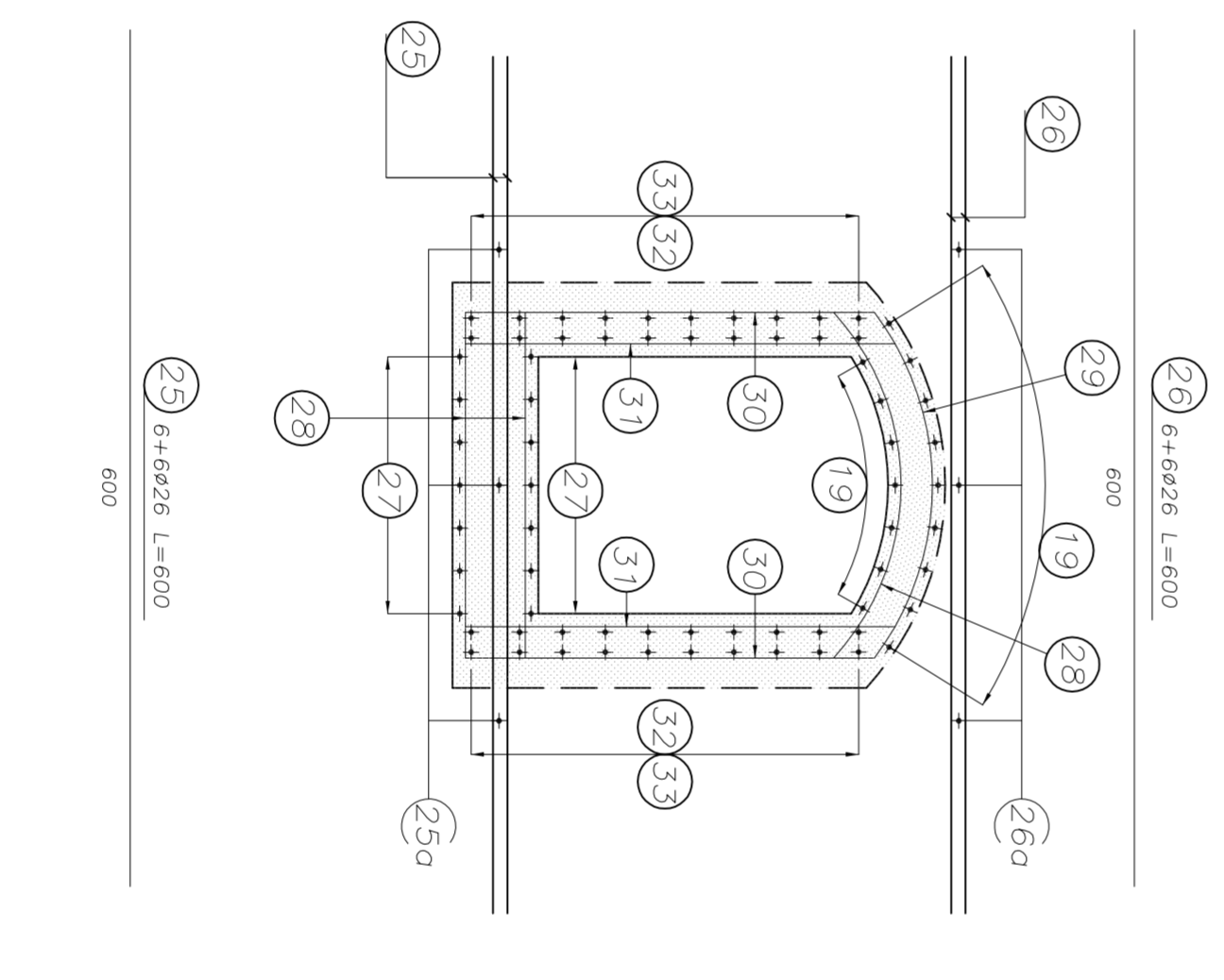
CURRENT SECTION A-A
SECȚIUNEA CURENȚII A-A
REINFORCING
REINFORCING
REINFORCING



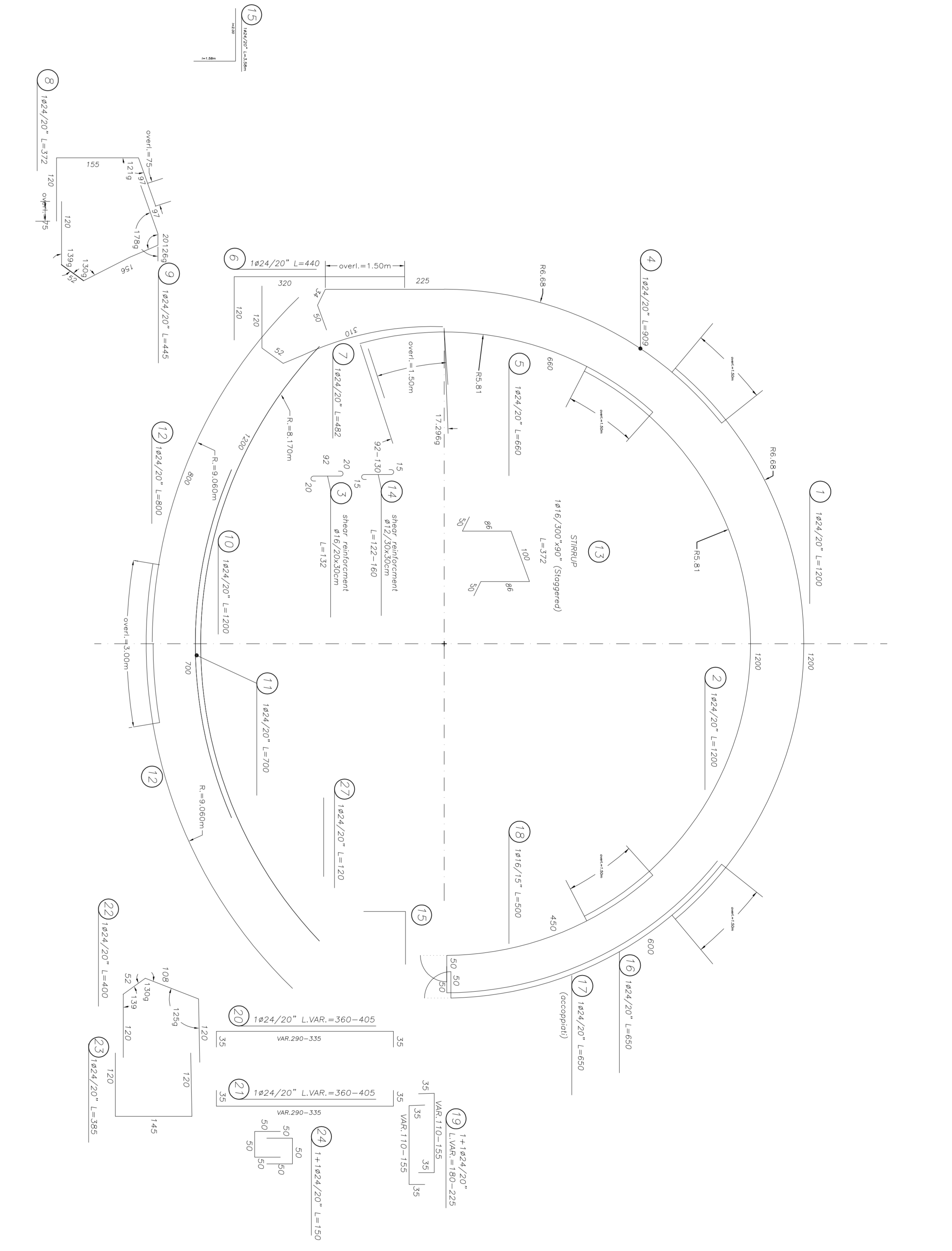
SECTION B-B WITH SHELTER STAFF NICHE
SECȚIUNEA B-B CU NIȘA FERĂRII ADAPOSTULUI PERSONALULUI



PLAN WITH SHELTER STAFF NICHE
PLAN CU NIȘA FERĂRII ADAPOSTULUI PERSONALULUI



CURRENT SECTION C-C
SECȚIUNEA CURENȚII C-C
REINFORCING
REINFORCING
REINFORCING



STEELS TABLE

REINFORCING STEEL

- BKCC (weldable)
- Bending diameter R_b :
- ϕ Bar $< \phi 20 \rightarrow R_b = 6\phi$
- ϕ Bar $\phi 20 - \phi 28 \rightarrow R_b = 6\phi$
- ϕ Bar $\phi 20 - \phi 28 \rightarrow R_b = 8\phi$

LEGEND

- RP = REFERENCE PLANE
- EX = EXCAVATIONS PLANE
- PC = CENTERS PLANE

MATERIAL TABLE

TUNNEL LINER: CONCRETE

- Type: C2
- $f_{ck} = 25$ MPa
- Water/cement ratio: 0.50
- Maximum aggregate size: S3/S4
- Exposure class related to environmental conditions: X2
- Class of chloride content: Cl 0.20
- ϕ max aggregate = 32 mm

TUNNEL GROUND: CONCRETE

- Type: C1
- $f_{ck} = 20$ MPa
- Water/cement ratio: 0.50
- Maximum aggregate size: S3/S4
- Exposure class related to environmental conditions: X2
- Class of chloride content: Cl 0.20
- ϕ max aggregate = 32 mm

REINFORCING STEEL

- RPBCC
- RPBCC controlled by establishment
- RPBCC
- Type: I
- $f_{yk} = 512$ MPa
- Cement type: CEM IV

CLIENT / CLIENT

CFR

CN.C.F. "C.F.R." - S.A.

CONSULTANT / CONSULTANT

TECHNIC

CONSULTANT / SUBCONSULTANT

Architect: R. LUTZA
Structural: C. GEMELLI
Civil: C. GEMELLI
Mechanical: C. GEMELLI
Electrical: C. GEMELLI

PROJECT FINANCED BY FINANȚA EUROPEANĂ

EUROPEAN UNION FINANCED PROJECT

PROIECT/PROJECT

2044630/16/974002

Faza: Proiect

P.N. / 1.0.

Dimensiune desen / Drawing Title:

ARHITECTURA SI SIEME
ARHITECTURA SI SIEME

Prima etapa: calcul de constructie

Scale: 1:50

Scale: 1:100

Scale: 1:200

Scale: 1:500

Scale: 1:1000

Scale: 1:2000

Scale: 1:5000

Scale: 1:10000

Scale: 1:20000

Scale: 1:50000

Scale: 1:100000

Scale: 1:200000

Scale: 1:500000

Scale: 1:1000000