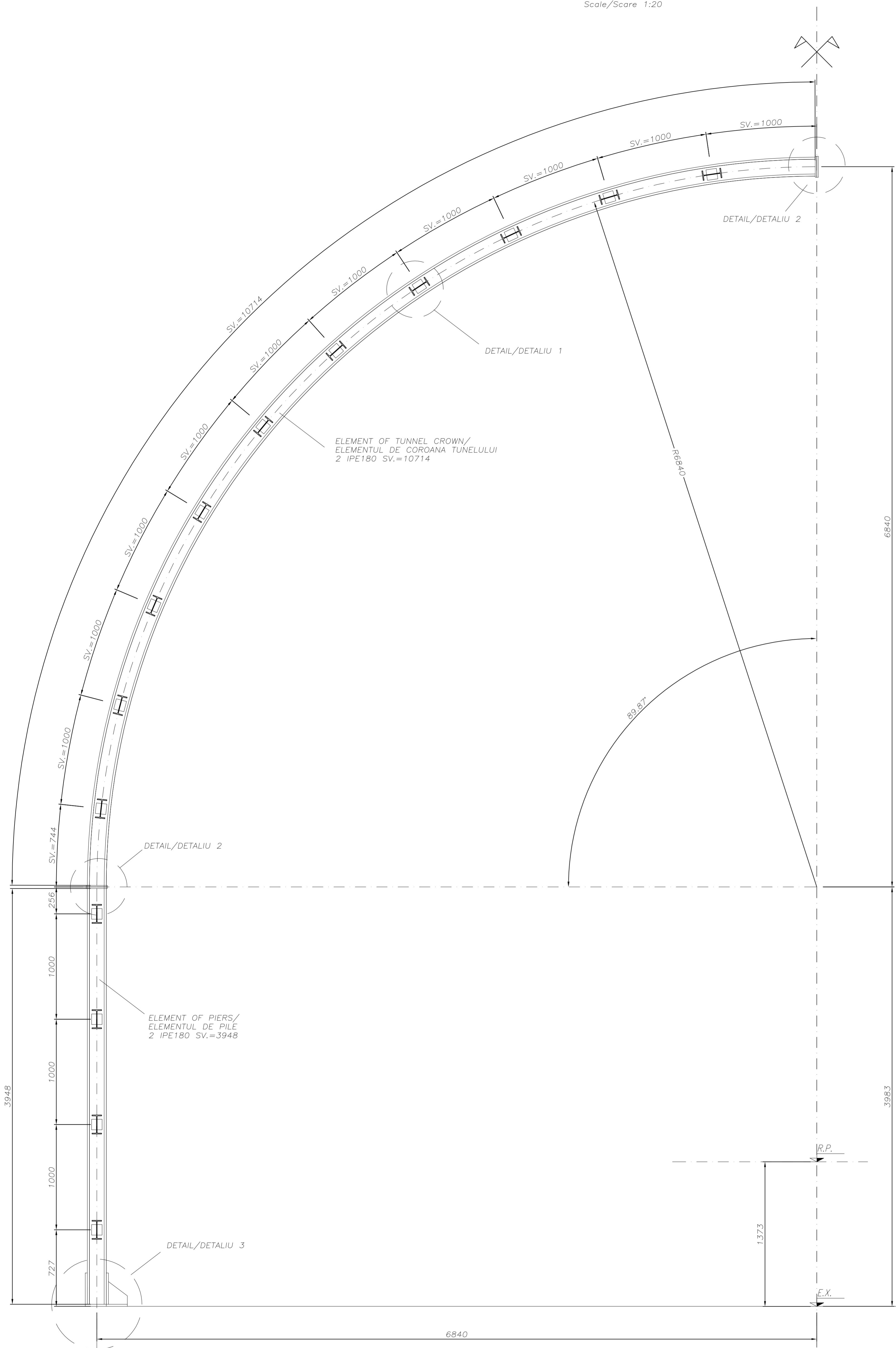
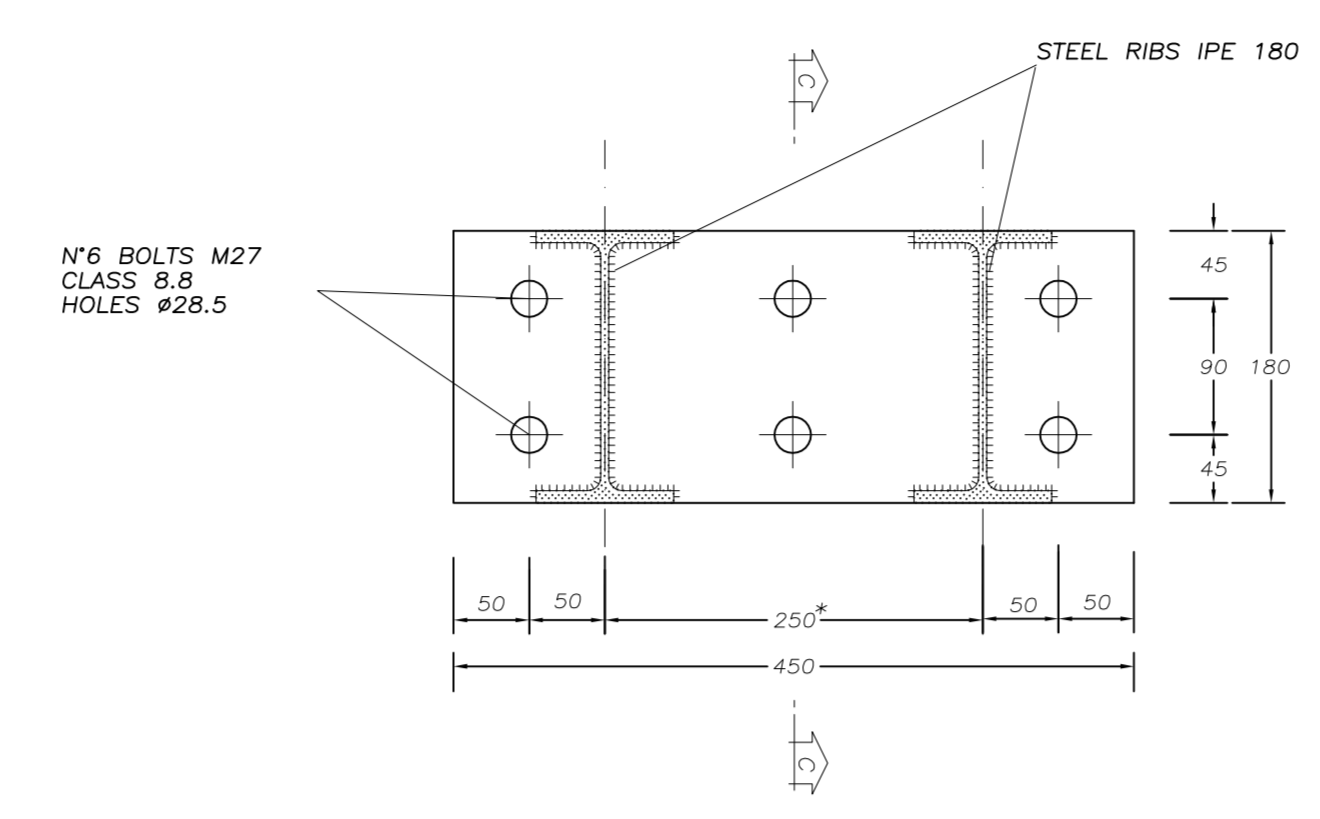


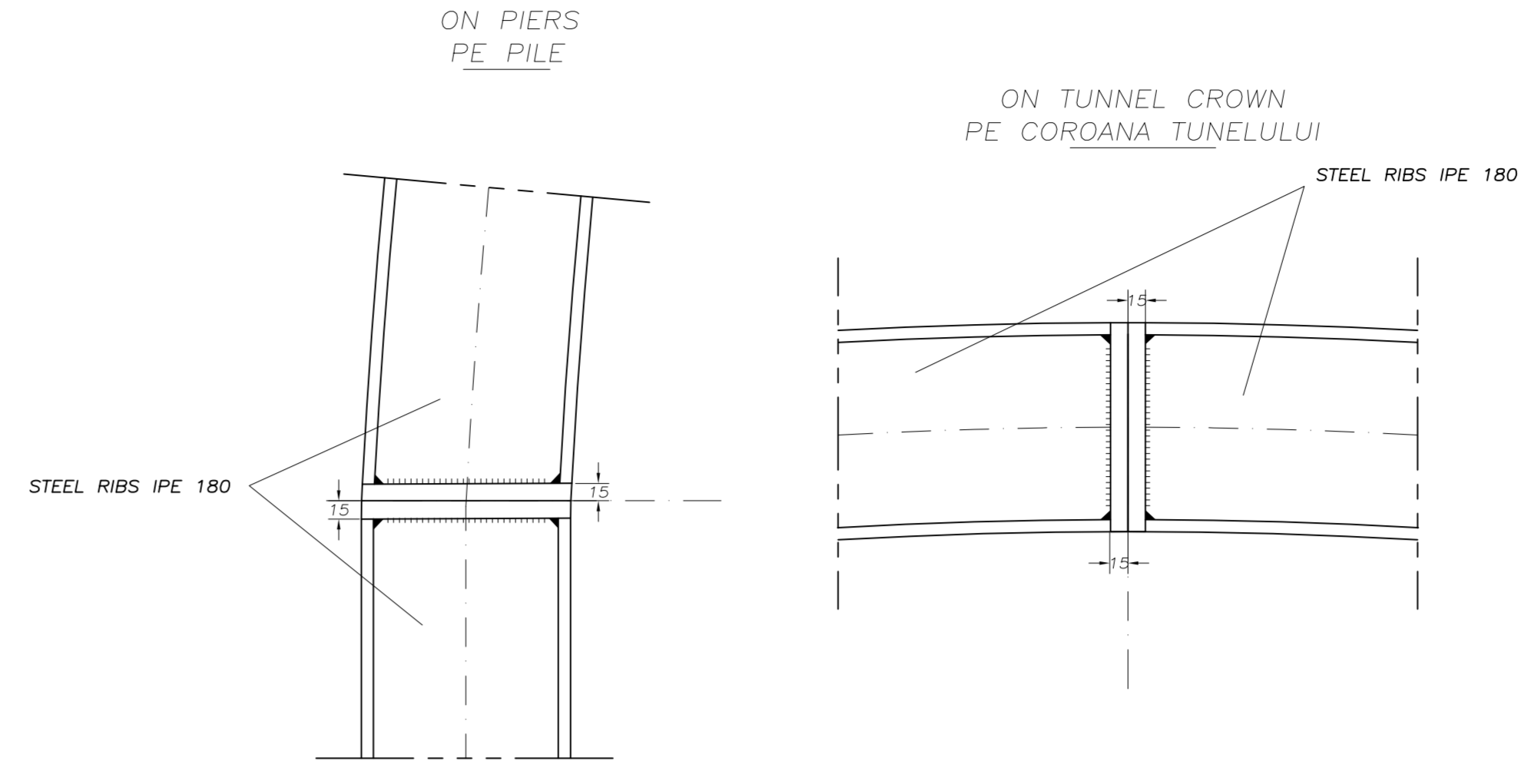
STEEL RIBS TYPE 2 IPE 180
NERVURI DIN OTEL TIP 2 IPE 180
Scale/Scara 1:20



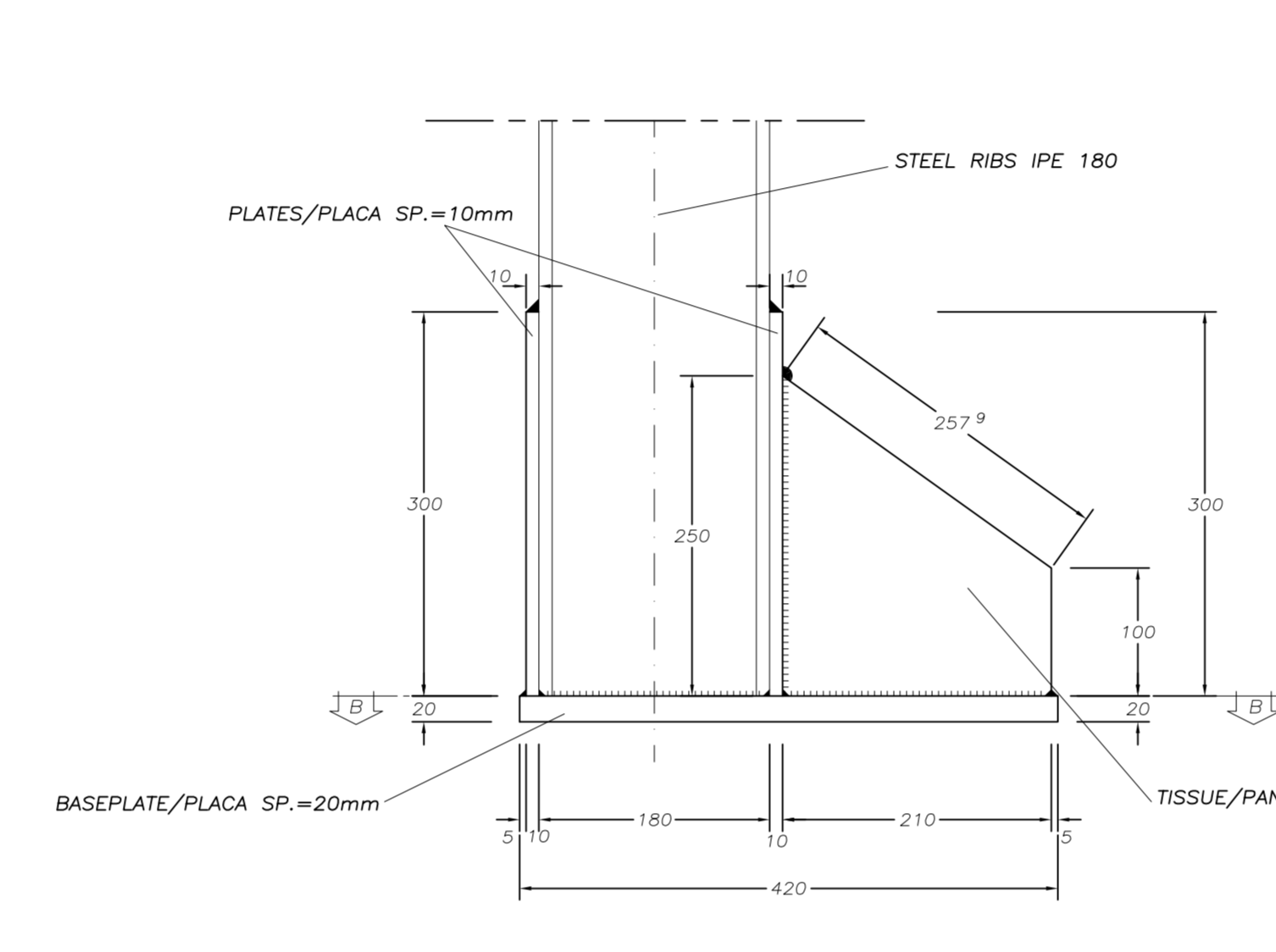
DETAIL "1"
DETALIU "1"
Scale/Scara 1:5



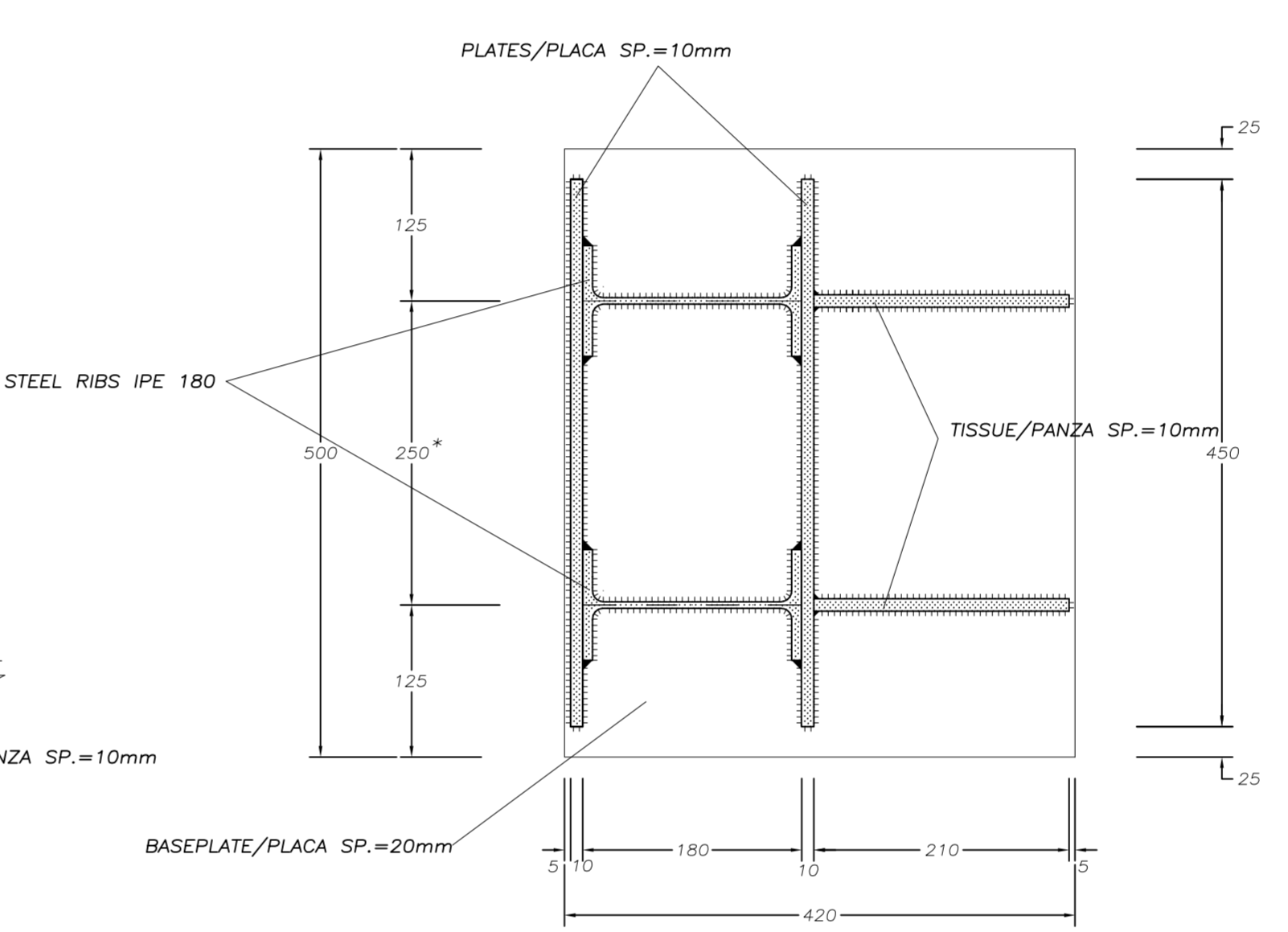
SECTION A-A
SECTIUNI A-A
Scale/Scara 1:5



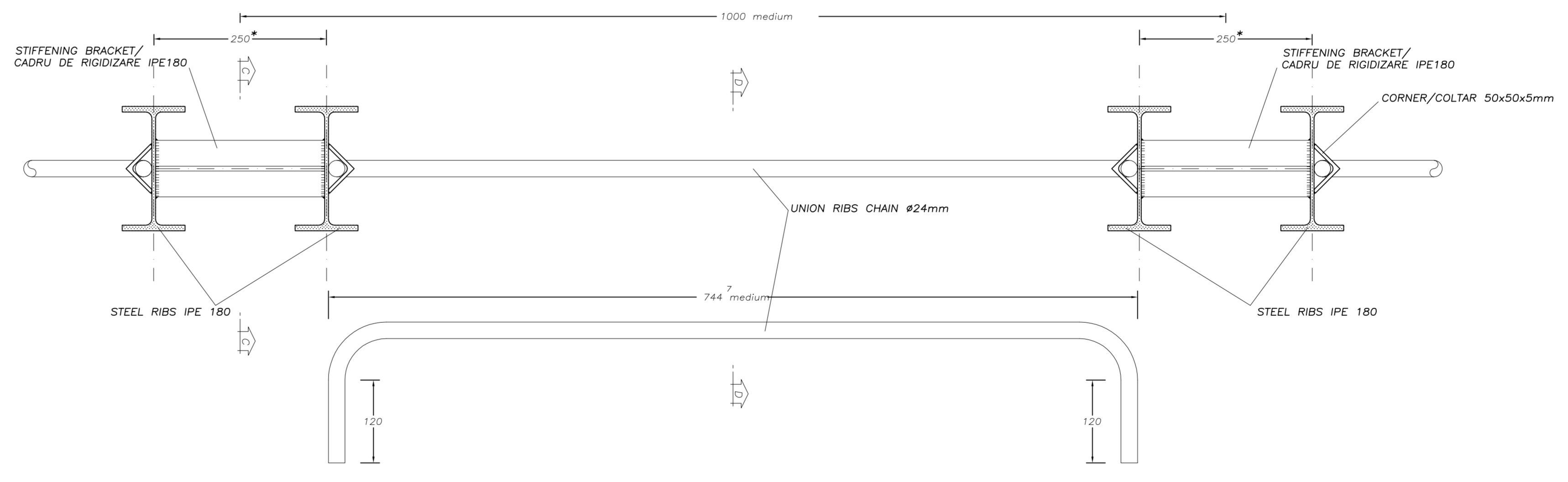
DETAIL "2"
DETALIU "2"
Scale/Scara 1:5



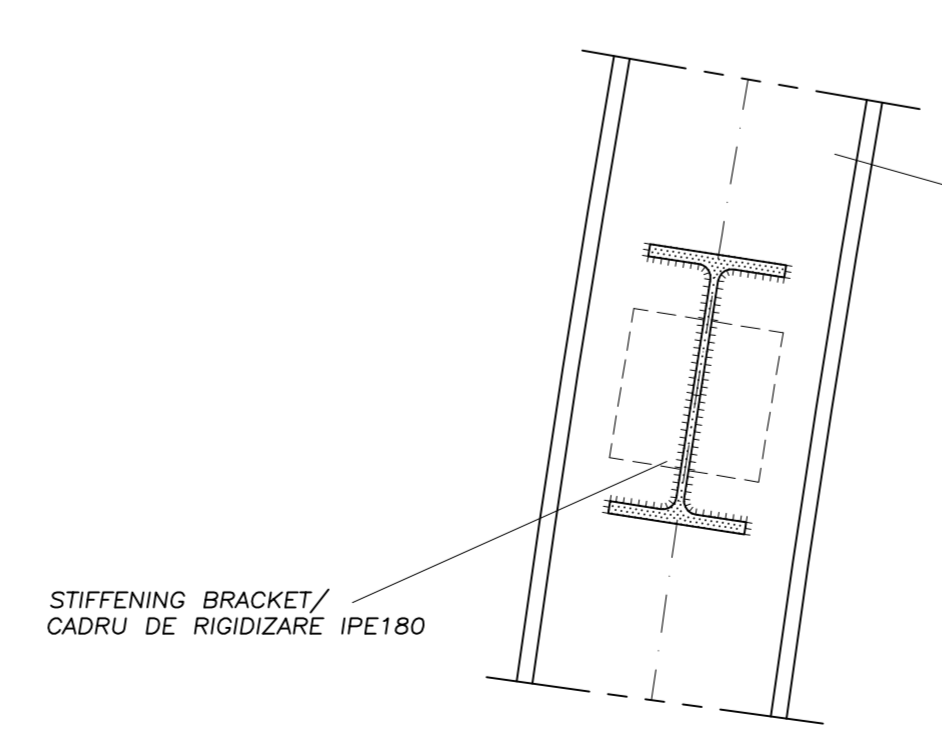
SECTION B-B
SECTIUNI B-B
Scale/Scara 1:5



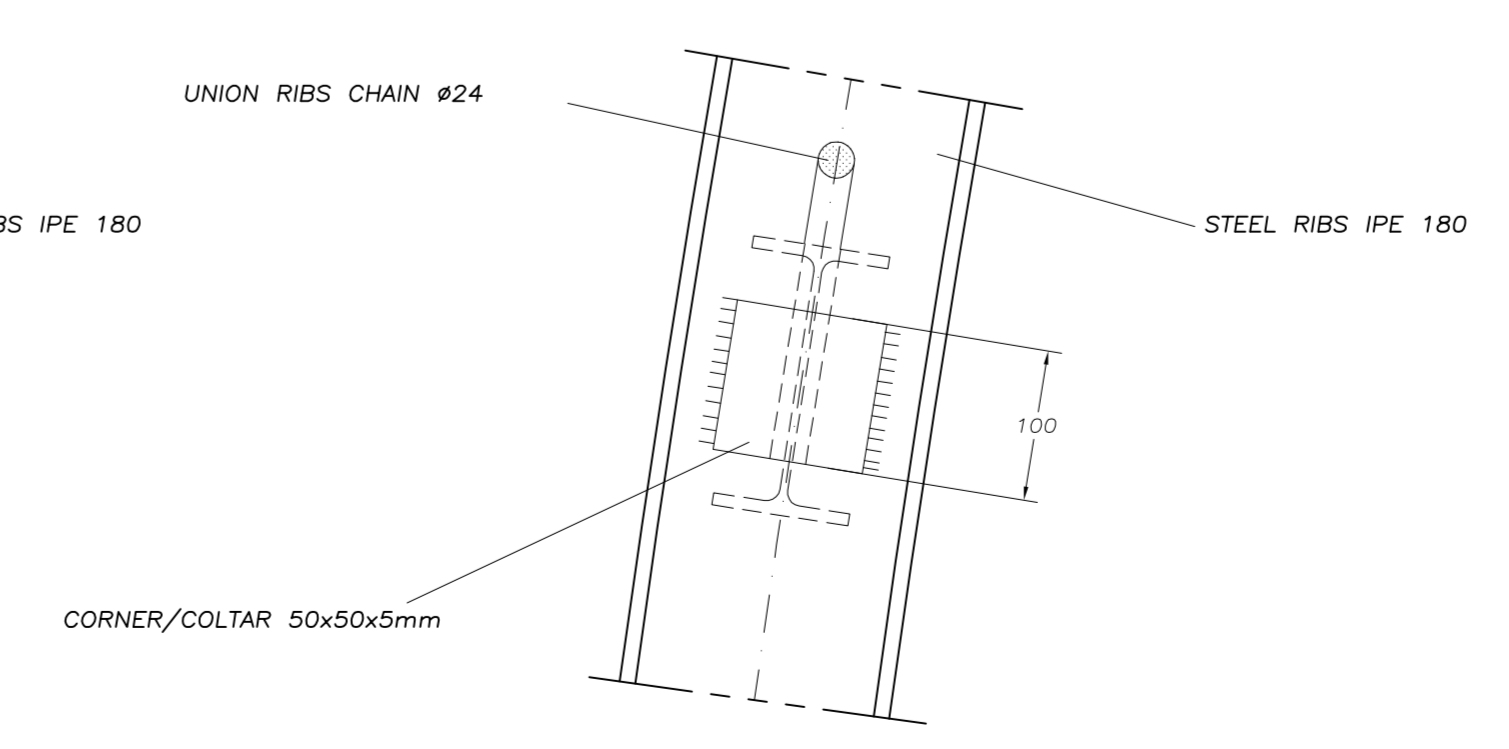
DETAIL "3"
DETALIU "3"
Scale/Scara 1:5



SECTION C-C
SECTIUNI C-C
Scale/Scara 1:5



SECTION D-D
SECTIUNI D-D
Scale/Scara 1:5



MATERIAL TABLE

RIBS, PLATE, STIFFENING, BRACKET, CORNER:

- S 275
- $f_{tmax} = 430$ MPa
- $f_{ymin} = 275$ MPa

CHAINS:

- B450C controlled by establishment
- Weldable

TABELUL DE MATERIALE

NERVURA DE OTEL, SECTIUNI CUPLATE, CADRU DE RIGIDIZARE, UNGHIIURI:

- S 275
- $f_{tmax} = 430$ MPa
- $f_{ymin} = 275$ MPa

LANT:

- B450C controlat de catre unitate
- Sudabil

LEGEND

RP = REFERENCE PLANE
EX = EXCAVATIONS PLANE
PC = CENTERS PLANE

D					
C					
B					
A					
Index	Date	Modificari	Proiectant	Aprobat Consultant	Aprobat CFR
		Modificari/Revisiuni	Designer	Approved Consultant	Approved CFR

GUVERNUL ROMANIEI
PROIECT FINANAT DE UNIUNEA EUROPEANA
ROMANIAN GOVERNMENT
EUROPEAN UNION GOVERNMENT PROJECT

C.N.C.F. "C.F.R." - S.A.

CLIENT / CLIENT

CONSULTANT / CONSULTANT			Date	Signature
Aprobat	Șef proiect			
Aprobat	Proiect manager	R. Liuzza		
Aprobat	Coordonator Secțiune 1			
Aprobat	Section 1 Coordinator	C. Gambelli		
Verificat	Tunel Expert			
Checked	Tunnel Expert	C. Gambelli		
Intocmit	Proiectant			
Elaborated	Designer	C. Gambelli		

SUBCONSULTANT / SUBCONSULTANT
 Aprobat: Responsabil Subconsultant
 Approved: Subconsultant Responsible
 Intocmit: Proiectant
 Elaborated: Designer

Rehabilitarea liniei de cale ferată Braşov - Simeria, parte componentă a coridorului IV Pan European, pentru circulația trenurilor cu viteză maximă de 160 km/h, Secțiune 1 Braşov - Sighisoara
 Rehabilitation of the railway line Braşov - Simeria, component Part of the IV Pan-European Corridor, for the trains circulation with maximum speed of 160 km/h, Section 1 Braşov - Sighisoara

Project/Project
2004/RO/16/PA/002
Faza / Phase:
P.Th. / T.D.

Denumire desen / Drawing Title:
ARCHITA 2 TUNNEL
ENTRANCE ARCHITECTURE SIDE
 Starting framework: formwork steel ribs and detail
 Inceputul cadrului: cofraje de nervuri din otel si detalii

Codificare / Codification System	Scara / Scale	LOT	Nr. / No
variat / various	variat / various		

E A 5 1 0 1 C 1 4 B B C A 0 9 0 0 0 0 2 0