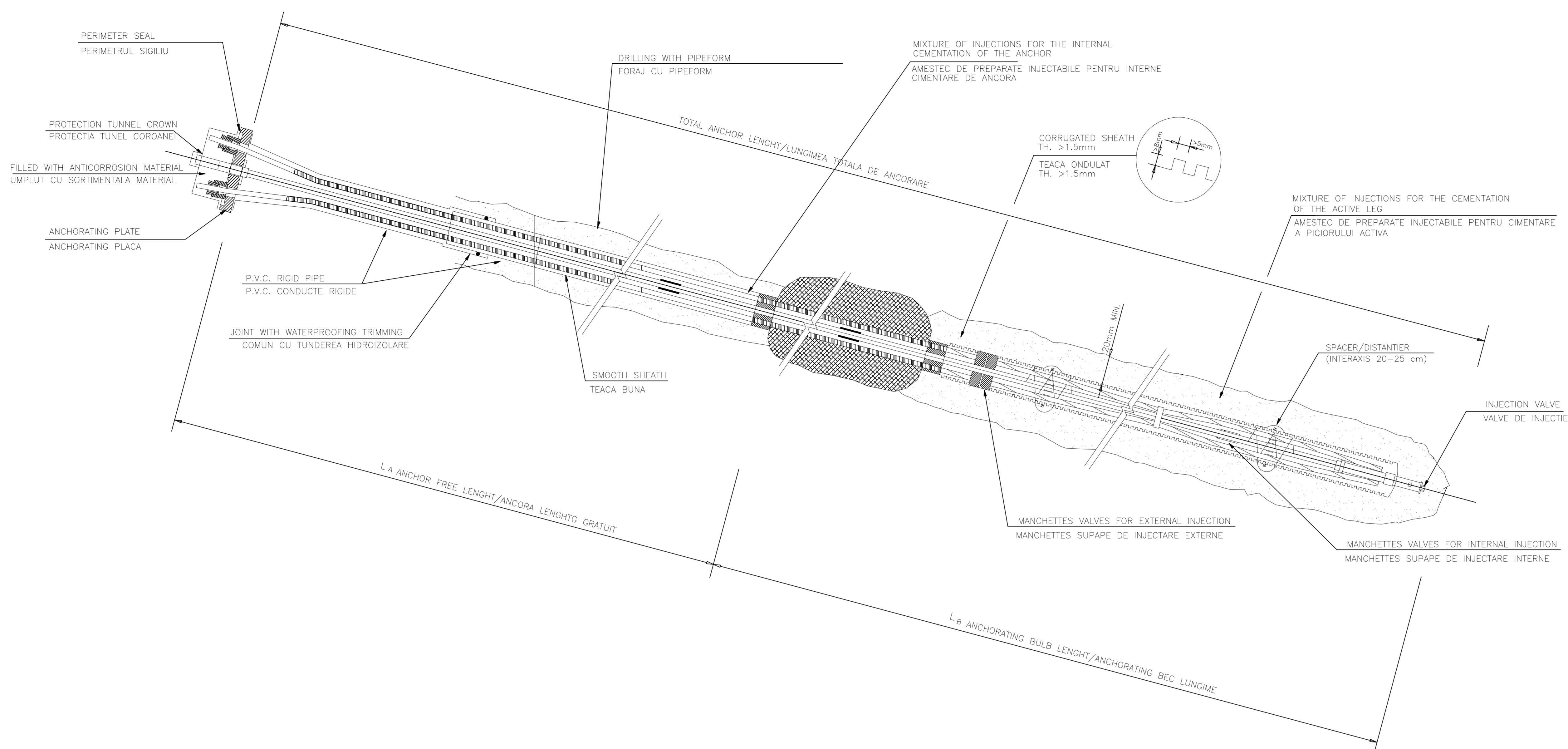
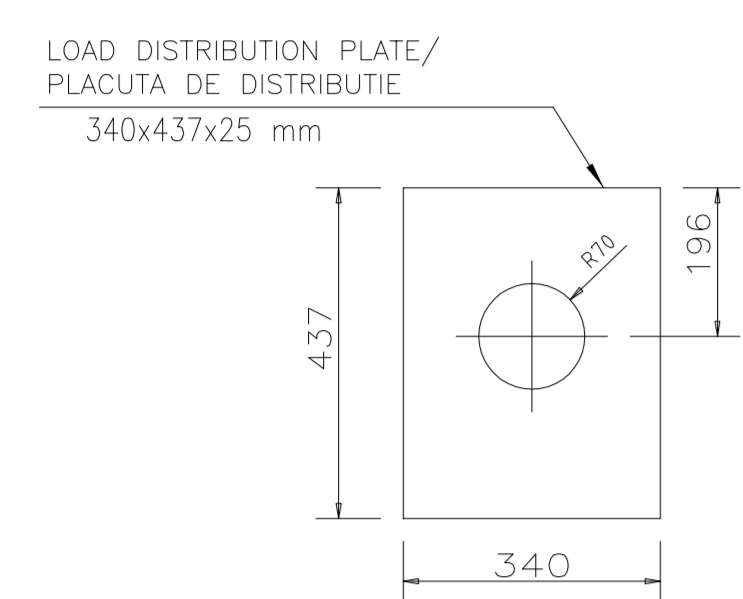


ANCHORS DETAIL/ANCORE DETALIU
Scale/Scara 1:5

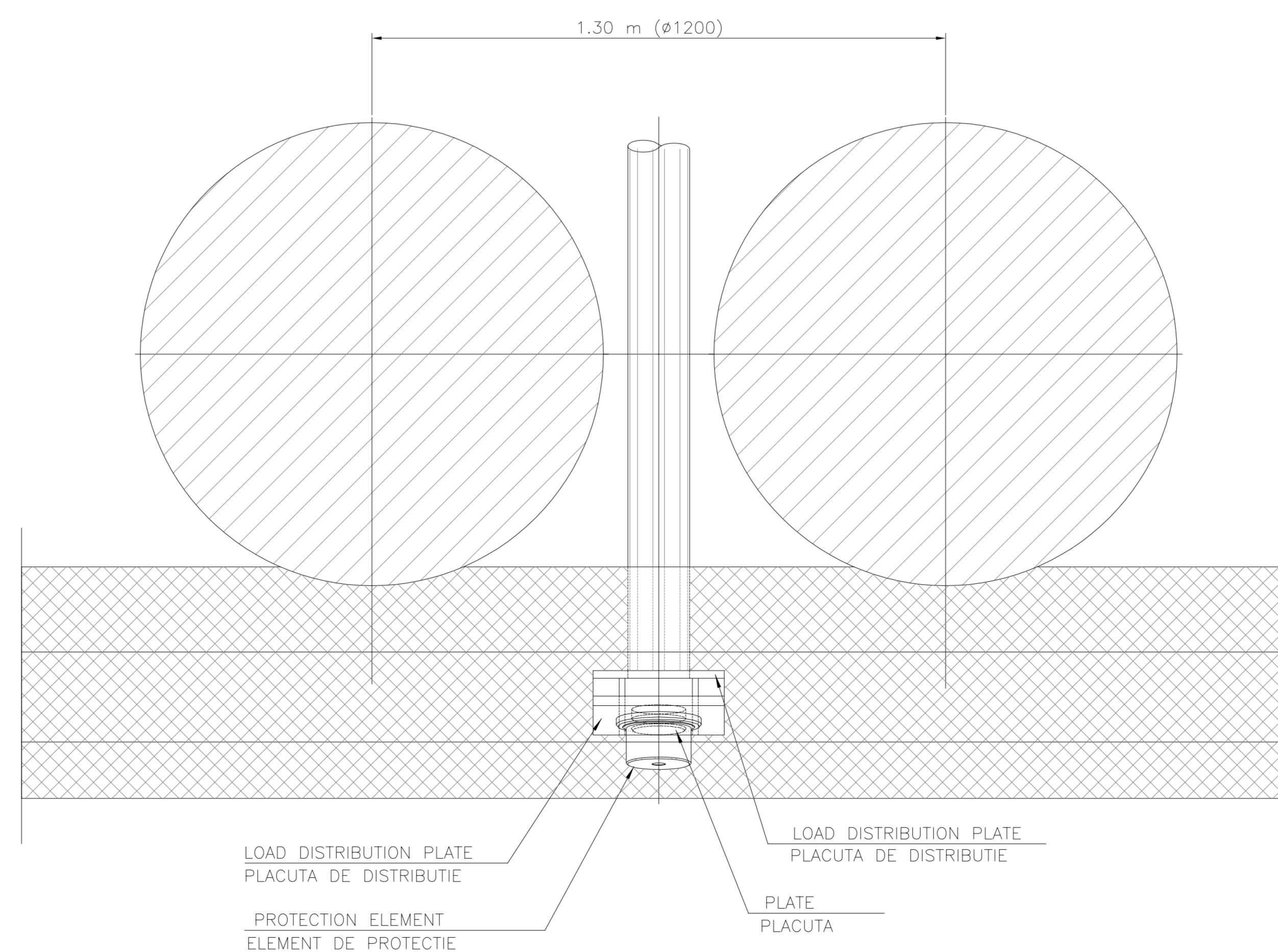
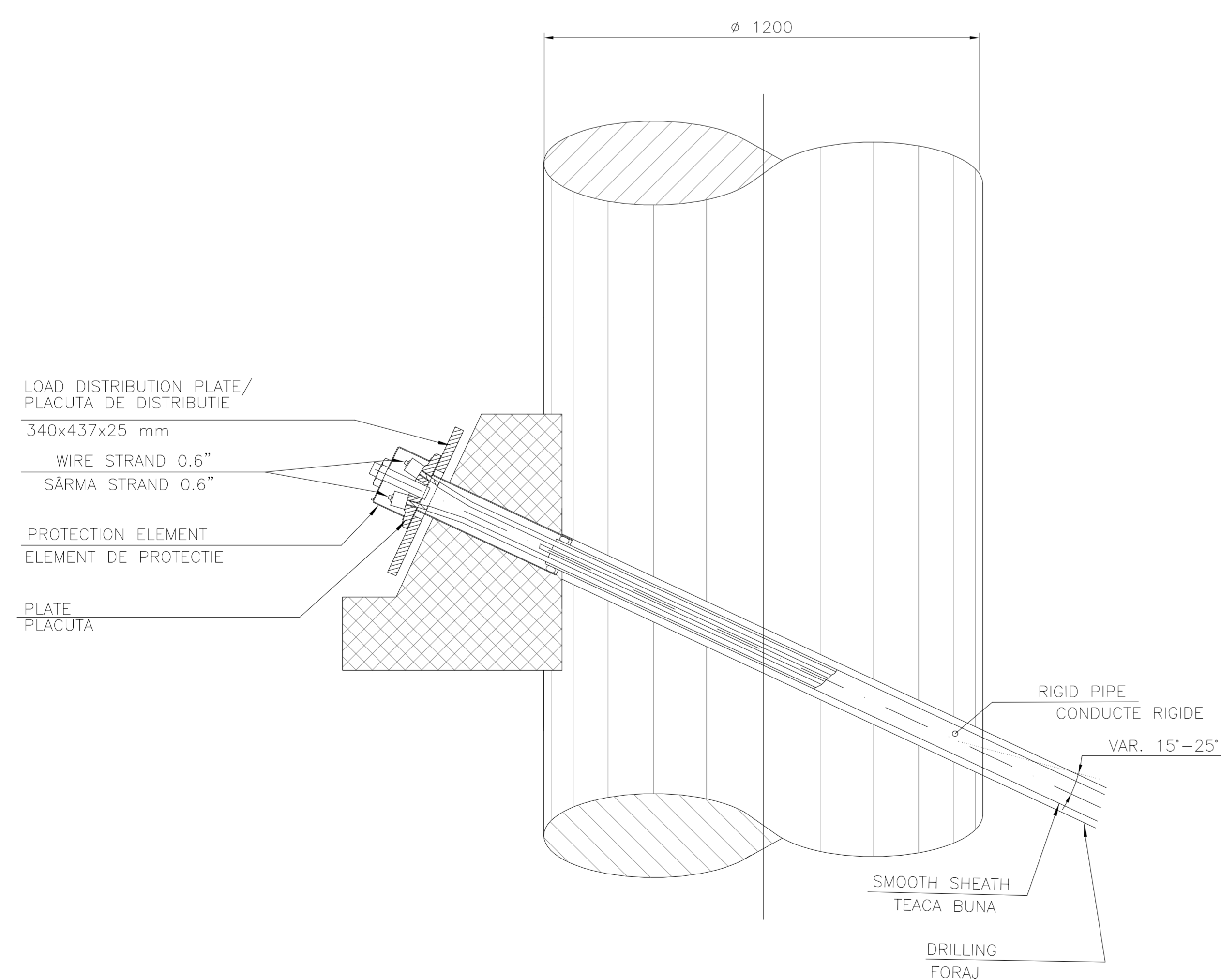
PLATES DETAIL/PLACI DETALIU
Scale/Scara 1:10



| MATERIAL/MATERIALE | |
|--|---|
| STEEL/OTEL: | - Fe 510 De=133 mm , s=12.5 mm |
| REINFORCED CONCRETE PILE/BETON ARMAT PILE: | - concrete/beton >= 30 MPa* * type/tip S4 - concret cover = 5 cm - reinforcing steel: B 450 C |
| ANCHOR: | - wire strand specifications diameter mm 15.50 (6/10") section mmq 139 - steel for prestressed concrete f _{pk} >= 1860 N/mm ² f _{pk} >= 1670 N/mm ² - injection pipe minimum diameter = 16 mm burst pressure >1 MPa for low pressure injection; >10 MPa for high pressure injection; - mixed concrete for injection total chlorine content of less than 0.05% of the weight of concrete and the content of total sulphur in the lower weight of 0.15% of cement to avoid danger stress corrosion. - smooth and corrugated sheath polyethylene or polypropylene |

ANCHOR PILES CURB REINFORCED DETAIL
Scale/Scara 1:10

PILES PLAN/PILOTI PLAN
Scale/Scara 1:10



| D | C | B | A | Index | Date | Modificari/Revision | Projectant | Approved Consultant | Approved CFR |
|--|------------|---------------------------|---------------------------|---|------|---|------------|---|--------------|
| | | | | | | | | | |
| | | | | | | | | GVERNUL ROMANIEI ROMANIAN GOVERNMENT | |
| | | | | | | PROIECT FINANAT DE UNIUNEA EUROPEANA EUROPEAN UNION FINANCED PROJECT | | C.N.C.F. "C.F.R." - S.A. | |
| CLIENT / CLIENT | | | | | | | | | |
| | | | | | | PLANEN - BETAUTN Ghent | | OBERMEYER PLANEN - BETAUTN Ghent | |
| CONSULTANT / CONSULTANT | | | | Data | | Semnatura | | Signature | |
| Approved | Approved | Self project | Project manager | R. Liuzza | | | | | |
| Approved | Approved | Coordinator | Section 1 Coordinator | C. Gambelli | | | | | |
| Verified | Checked | Tunnel Expert | Tunnel Expert | C. Gambelli | | | | | |
| Elaborated | Elaborated | Project | Designer | C. Gambelli | | | | | |
| SUBCONSULTANT / SUBCONSULTANT | | | | Data | | Semnatura | | Signature | |
| Approved | Approved | Responsible Subconsultant | Subconsultant Responsible | | | | | | |
| Elaborated | Elaborated | Projectant | Designer | | | | | | |
| Rehabilitarea liniei de cale ferata Brasov - Simeria, parte componenta a coridorului IV Pan European, pentru circulatia trenurilor cu viteza maxima de 160 km/h. | | | | Section 1 Brasov - Sighisoara | | Project/Project 2004/RO/16/PA/002 | | | |
| Rehabilitation of the railway line Brasov - Simeria, component Part of the IV Pan-European Corridor, for the trains circulation with maximum speed of 160 km/h. | | | | Section 1 Brasov - Sighisoara | | Faza / Phase: P.Th. / T.D. | | | |
| Denumire desen / Drawing Title : | | | | ARCHITA 2 TUNNEL ENTRANCE ARCHITA SIDE Tunnel entrance concrete pile wall anchor detail Pila din beton a peretelui de la intrarea in tunel: anchor detailu | | | | | |
| Codificare / Codification System | | | | Scara / Scale | | LOT | | Nr. / No | |
| E A 5 1 | | | | variat / various | | 0 0 | | 0 0 0 4 0 | |