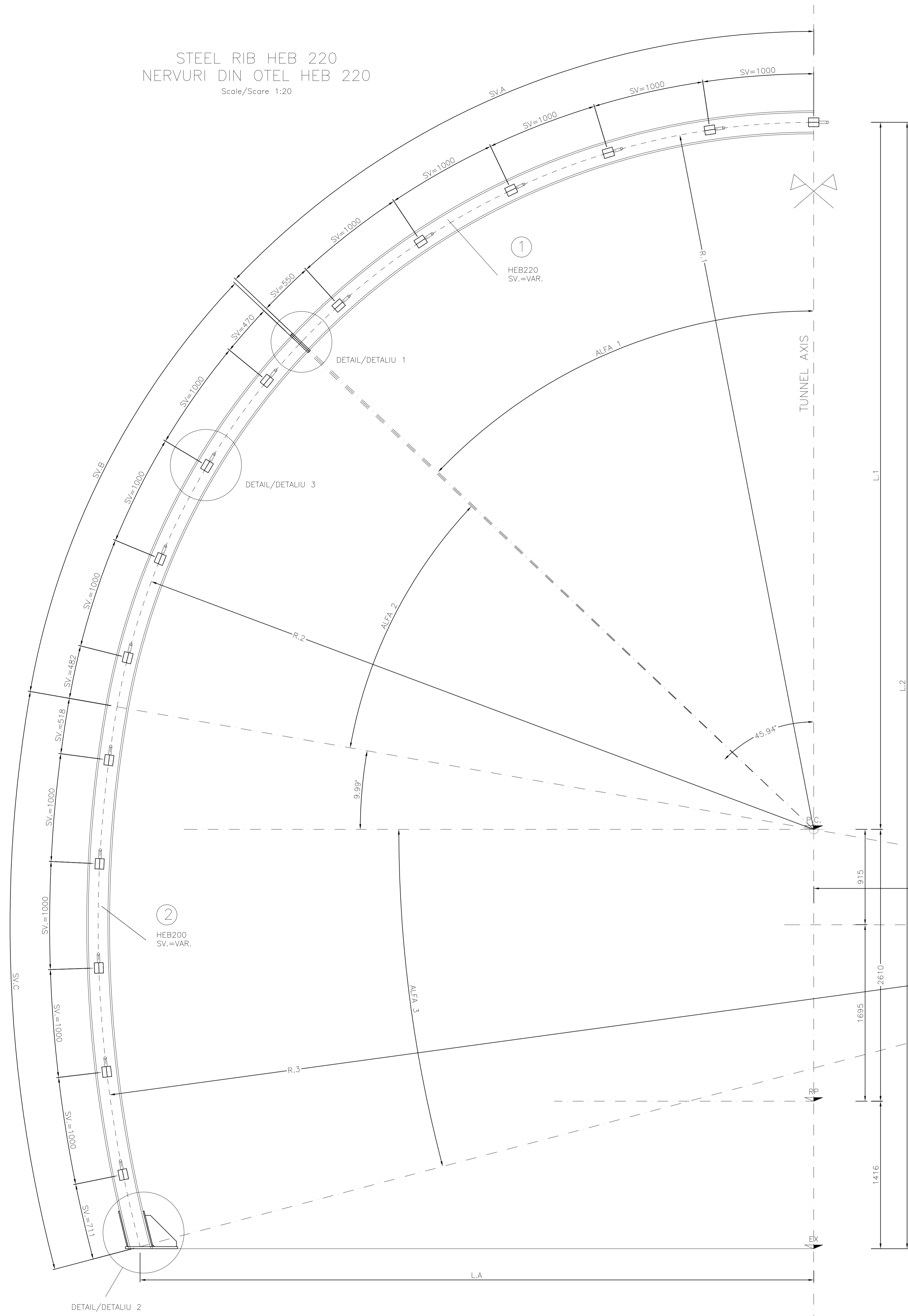
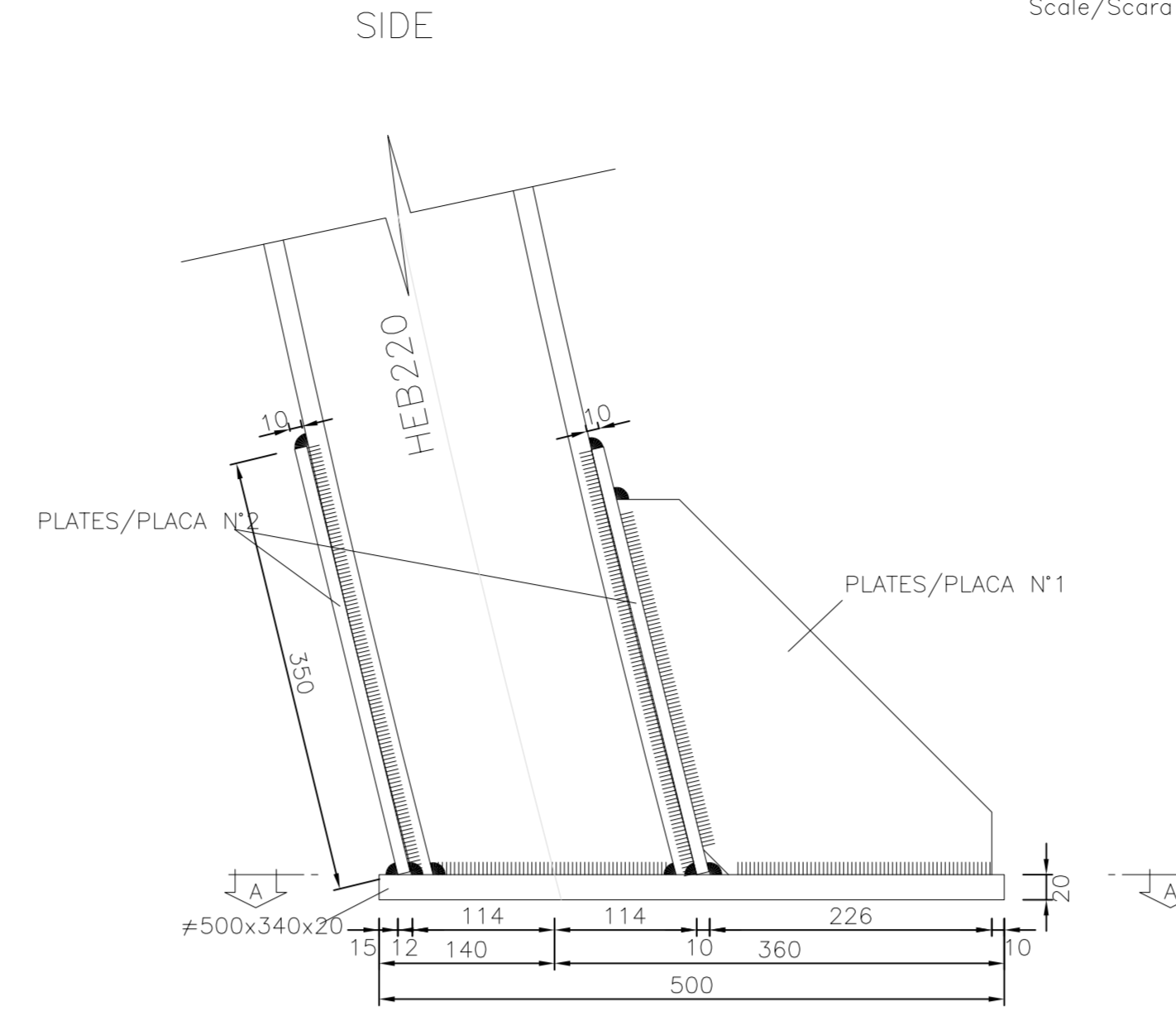


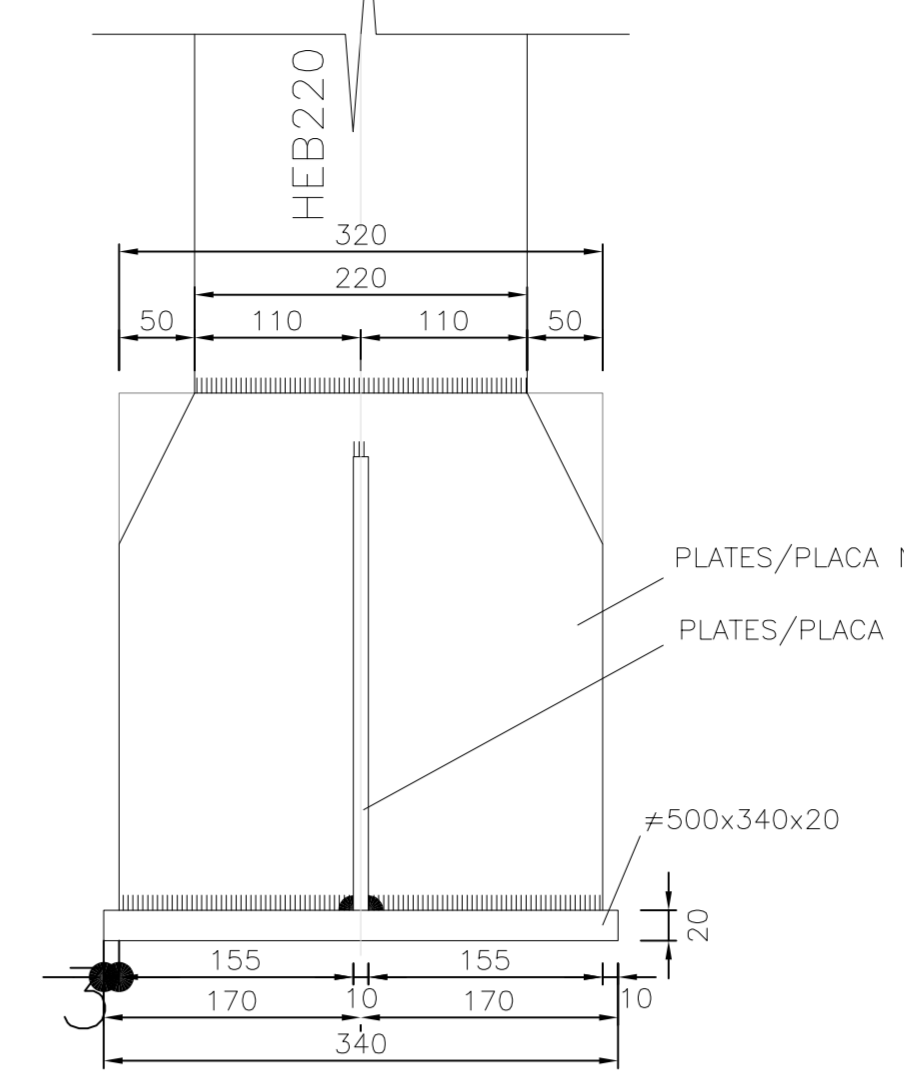
STEEL RIB HEB 220  
NERVURI DIN OTEL HEB 220  
Scale/Scara 1:20



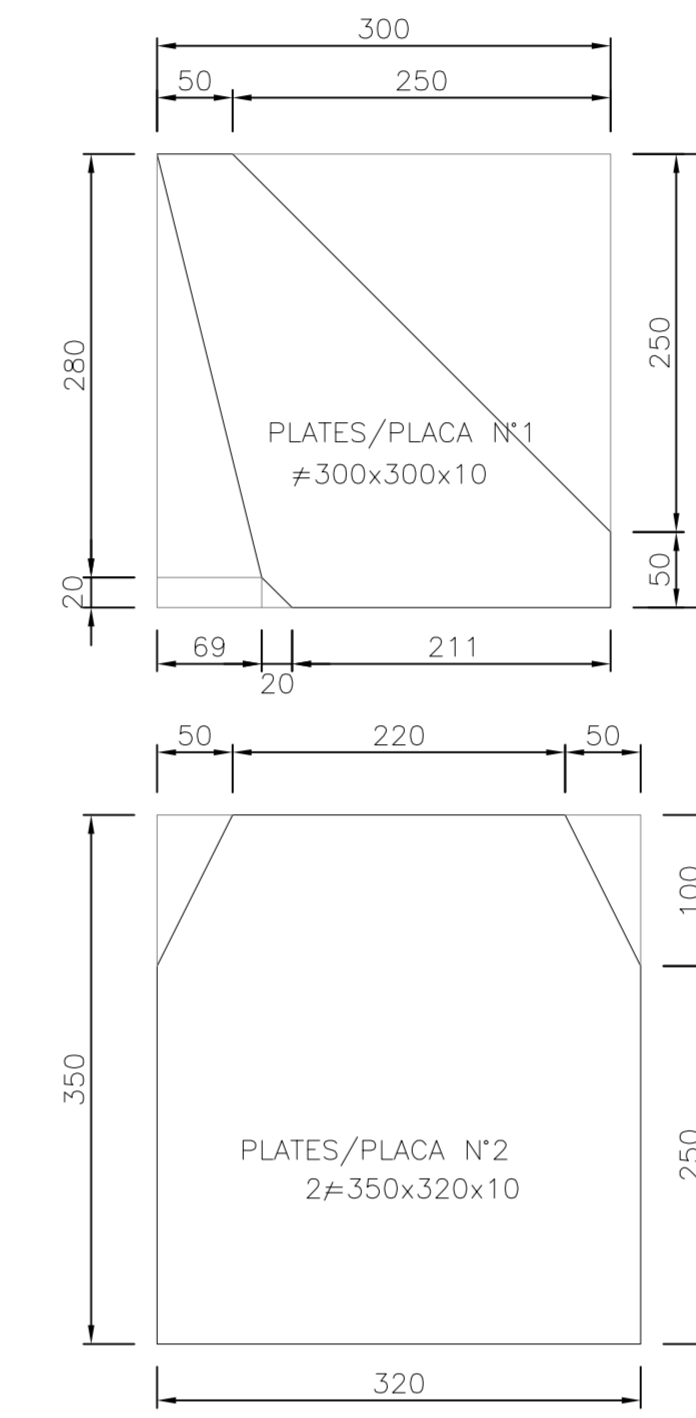
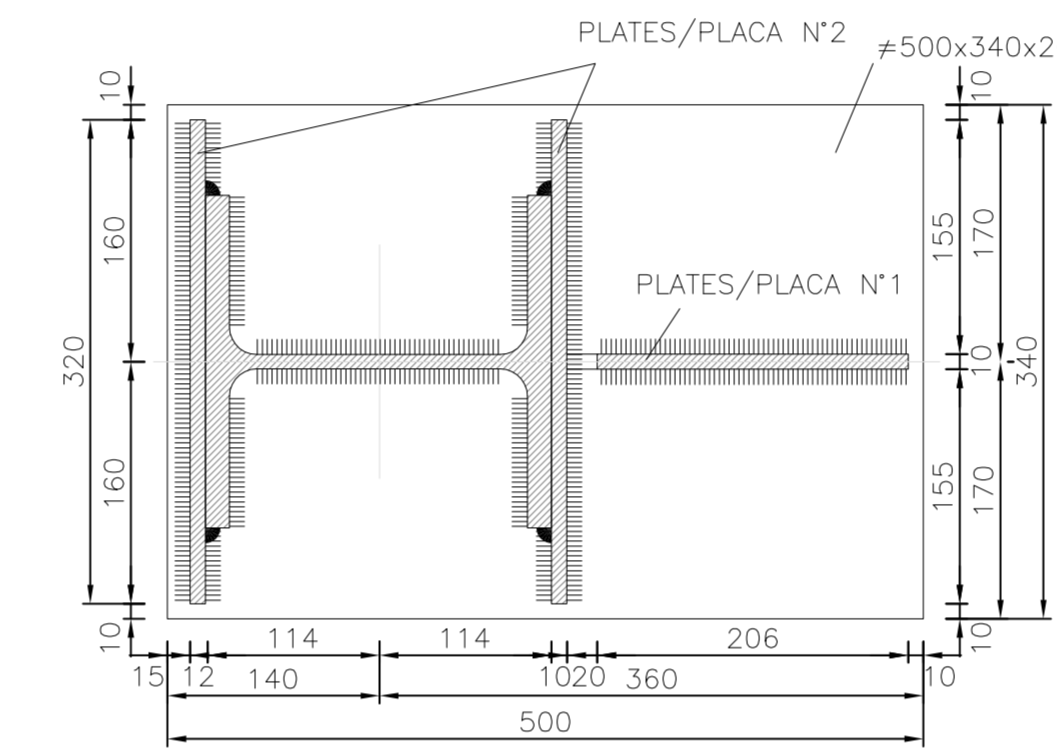
DETAIL "1"  
DETALIU "1"  
Scale/Scara 1:5



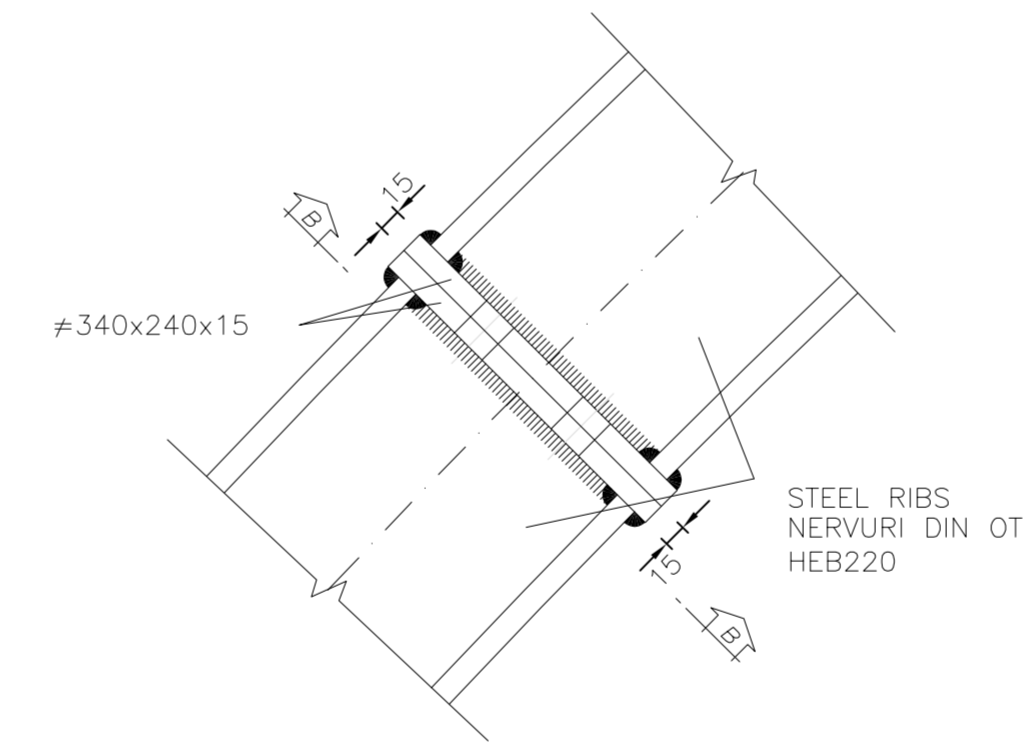
FRONT



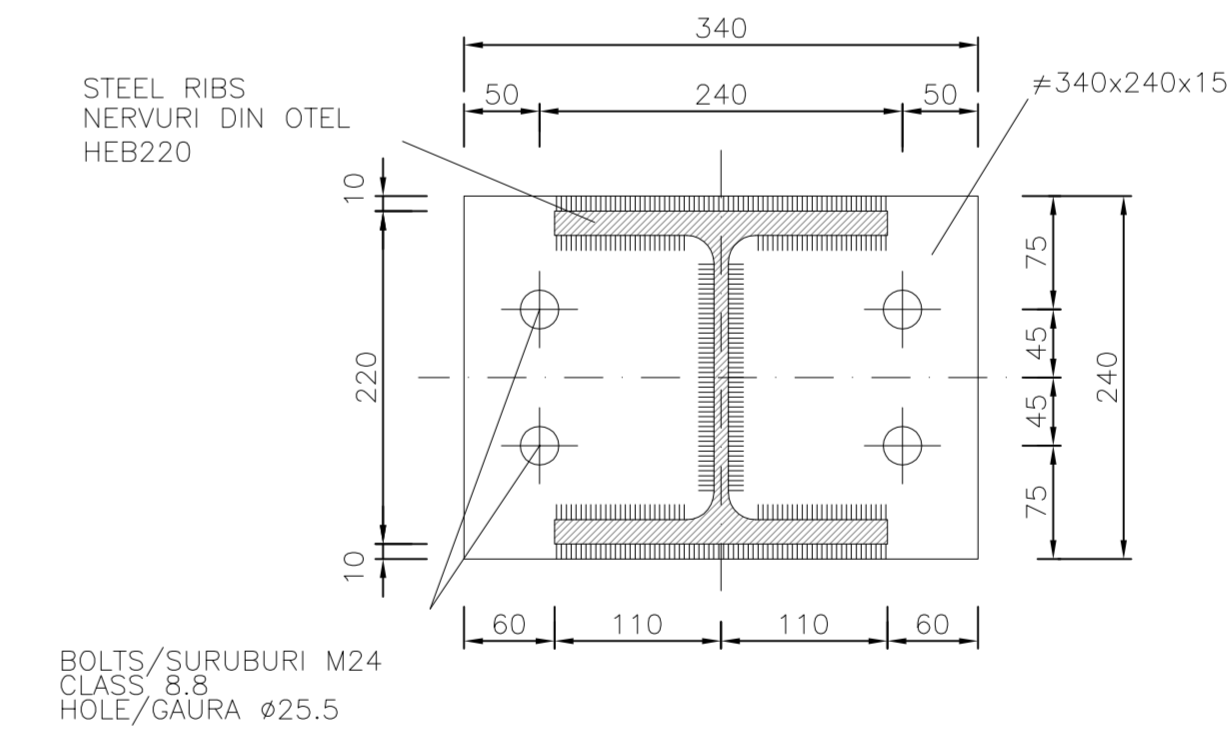
SECTION A-A  
SECTIUNEA A-A  
Scale/Scara 1:5



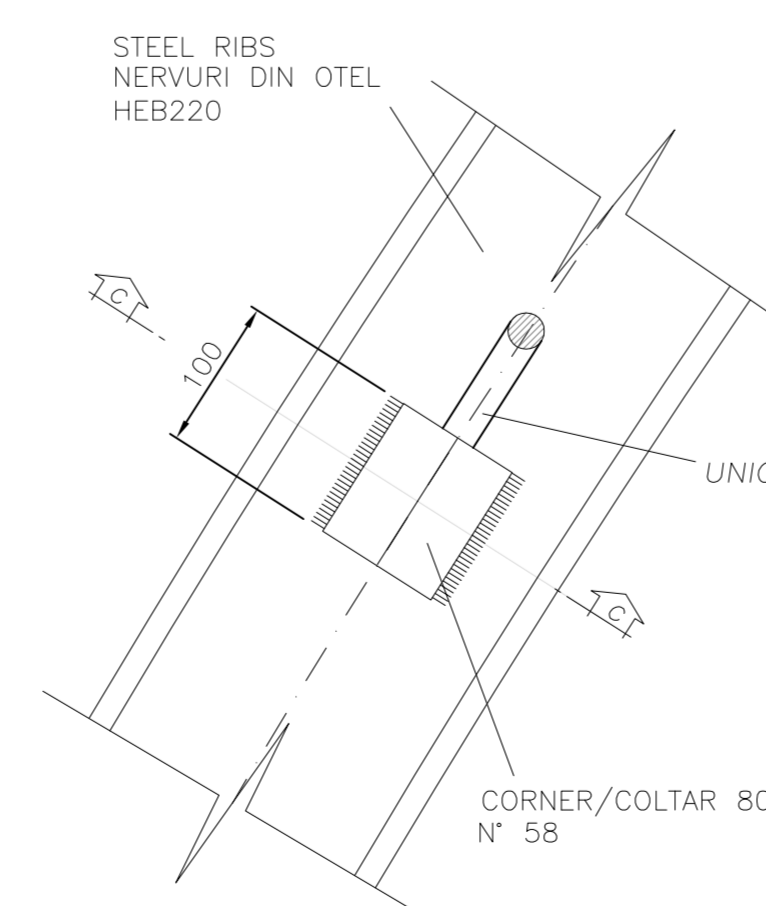
DETAIL "2"  
DETALIU "2"  
Scale/Scara 1:5



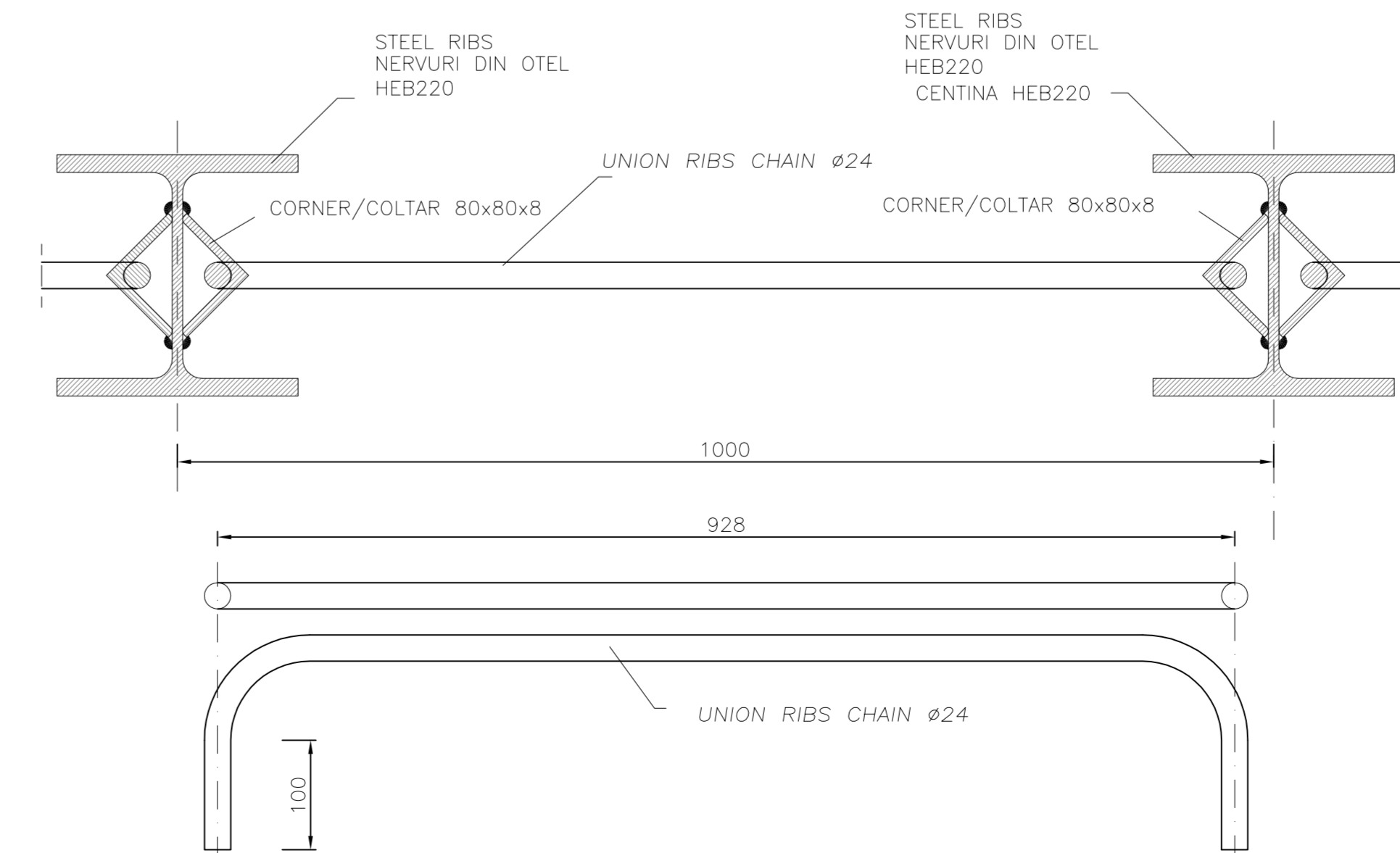
SECTION B-B  
SECTIUNEA B-B  
Scale/Scara 1:5



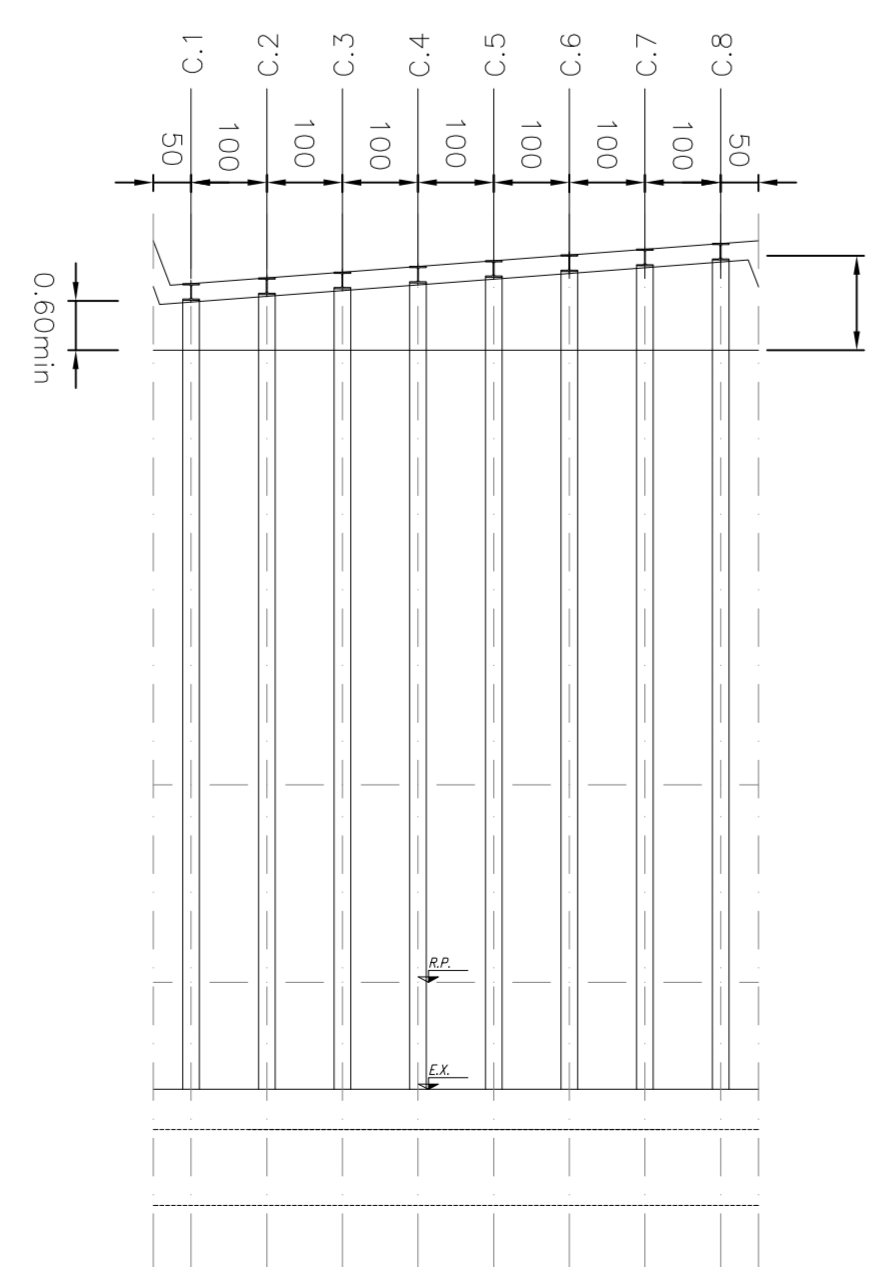
DETALIU "3"  
Scale/Scara 1:5



SECTION C-C  
SECTIUNEA C-C  
Scale/Scara 1:5



STEEL RIB HEB 220  
NERVURI DIN OTEL HEB 220  
Scale/Scara 1:100



RIBS	GEOMETRICAL DATA										TOT.	L.A	L.1	L.2
	R.1	ALFA 1	SV.A	SV.101	R.2	ALFA 2	SV.B	R.3	ALFA 3	SV.C				
TYPE "1"	6549	48.13'	5502	31004	6549	31.62'	3614	11824	25.14'	5189	8803	6218	6549	10575
TYPE "2"	6599	48.13'	5542	31084	6599	31.62'	3640	11872	25.08'	5197	8837	6265	6597	10623
TYPE "3"	6693	48.13'	5623	31246	6693	31.62'	3693	11968	24.96'	5213	8906	6367	6693	10719
TYPE "4"	6741	48.13'	5663	31326	6741	31.62'	3720	12016	24.90'	5221	8941	6416	6741	10767
TYPE "5"	6836	48.13'	5744	31488	6836	31.62'	3773	12111	24.78'	5237	9010	6515	6836	10862
TYPE "6"	6937	48.13'	5824	31648	6937	31.62'	3826	12207	24.66'	5253	9079	6614	6932	10958
TYPE "7"	6979	48.13'	5864	31728	6979	31.62'	3852	12254	24.60'	5261	9113	6663	6979	11005
TYPE "8"	7075	48.13'	5945	31890	7075	31.62'	3905	12350	24.48'	5277	9182	6762	7075	11101

MATERIAL TABLE	
RIBS, PLATE, STEFFENING, BRACKET, CORNER :	
-	S. 275
-	f <sub>max</sub> = 430 MPa
-	f <sub>y</sub> = 275 MPa
CHAINS :	
-	B450C controlat by establishment
-	Weissble

TABELUL DE MATERIALE	
NERVURA DE OTEL, SECTIUNI CUPLATE, CADRU DE RIGIDIZARE, UNGHURI :	
-	S. 275
-	f <sub>max</sub> = 430 MPa
-	f <sub>y</sub> = 275 MPa
LANT :	
-	B450C controlat de catre unitate
-	Sudabil

LEGEND  
RP = REFERENCE PLANE  
EX = EXCAVATIONS PLANE  
PC = CENTERS PLANE

D					
C					
B					
A					
Index	Date	Modificari	Proiectant	Aprobat Consultant	Aprobat CFR
		Modificari/Revision	Designer	Approved Consultant	Approved CFR
GUVERNUL ROMANIEI		PROIECT FINANAT DE UNIUNEA EUROPEANA		EUROPEAN UNION FINANCED PROJECT	
ROMANIAN GOVERNMENT		EUROPEAN UNION FINANCED PROJECT			
CLIENT / CLIENT				C.N.C.F. "C.F.R." - S.A.	
CONSULTANT / CONSULTANT		Data		Semnatura	
Aprobat	Proiect manager	Date		Signature	
Aprobat	R. Liuzza				
Aprobat	Coordonator Sectiune 1				
Aprobat	C. Gambelli				
Verificat	Tunel Expert				
Checkat	Tunel Expert				
Intocmit	Proiectant				
Elaborat	C. Gambelli				
SUBCONSULTANT / SUBCONSULTANT					
Aprobat	Responsabil Subconsultant				
Aprobat	Subconsultant Responsabil				
Intocmit	Proiectant				
Elaborat	Designer				
Reabilitarea liniei de cale ferata Brasov - Simeria, parte componenta a coridorului IV Pan European, pentru circulatia trenurilor cu viteza maxima de 160 km/h. Sectiunea 1 Brasov - Sighisoara				Project/Project 2004/RO/16/PA/003	
Rehabilitation of the railway line Brasov - Simeria, component Part of the IV Pan-European Corridor, for the trains circulation with maximum speed of 160 km/h. Section 1 Brasov - Sighisoara				Faza / Phase: P.Th. / T.D.	
Denumire desen / Drawing Title : ARCHITA 2 TUNNEL					
NATURAL TUNNEL					
Section type "C3" with and without niches - Steel ribs 1 of 2					
Sectiunea tip "C3" cu si fara nise - Nervuri din otel 1 din 2					
Codificare / Codification System		Scara / Scale		Nr. / No	
variat / various		LOT		.	
E	A	5	1	C	1
4	B	B	G	N	0
4	0	4	0	0	0
0	0	3	0		