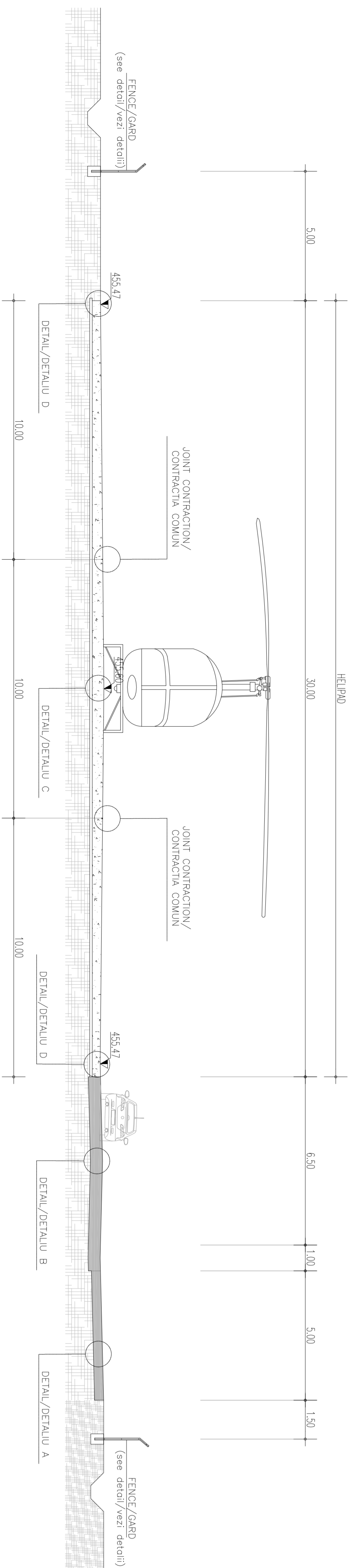


SECTION/SECȚIUNEA A-A
Scale/Scale 1:100



KEY MAP



MATERIAL TABLE

S&B CONCRETE

- Type C2
- Min. cement ratio 0.30
- Min. water content 18%
- Min. air content 5%
- Min. aggregate max. size 16mm
- Min. aggregate max. content 0.20
- Min. aggregate max. size 20mm

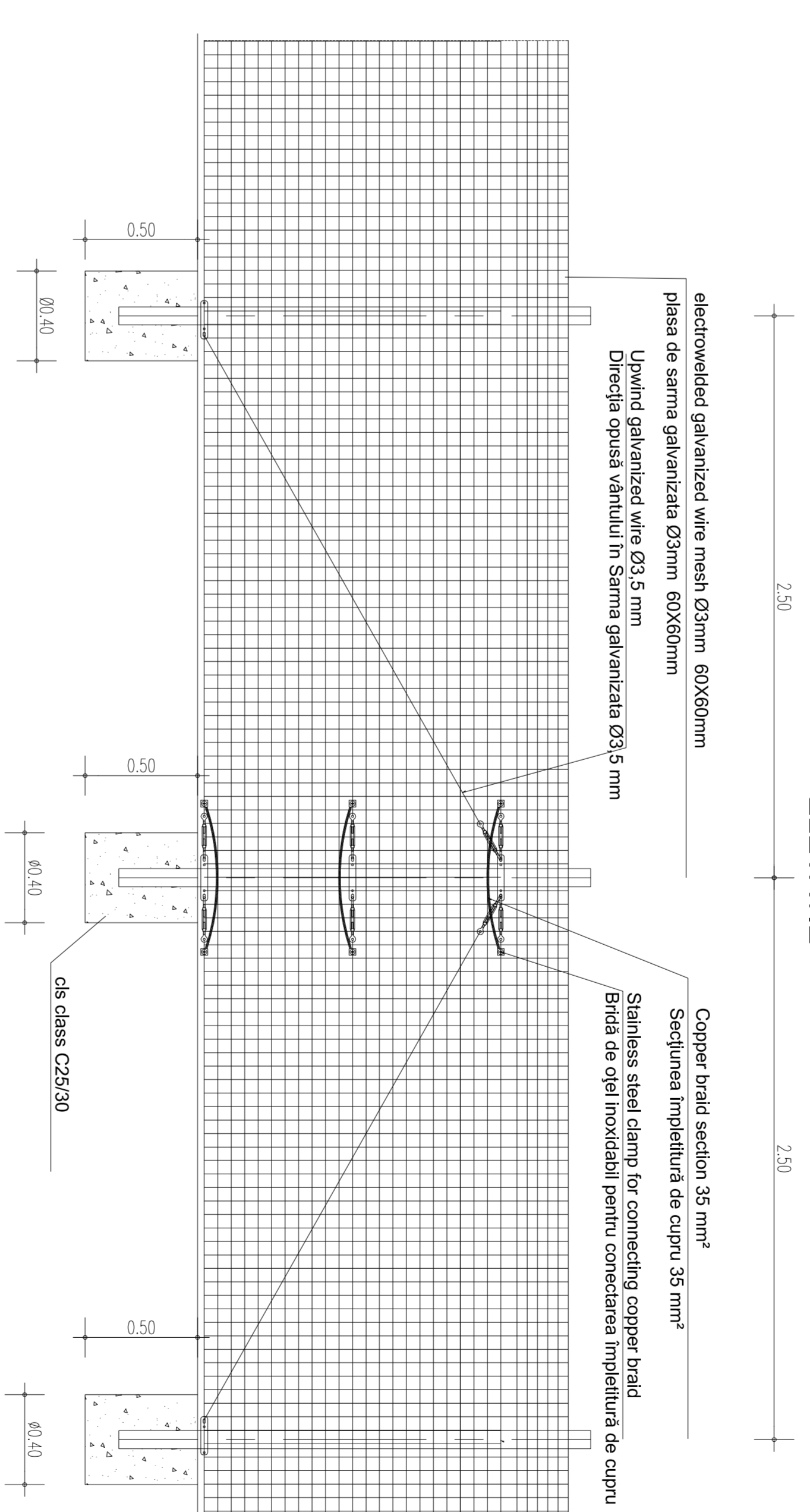
REINFORCING STEEL

- R40C certified by establishment
- Weldable

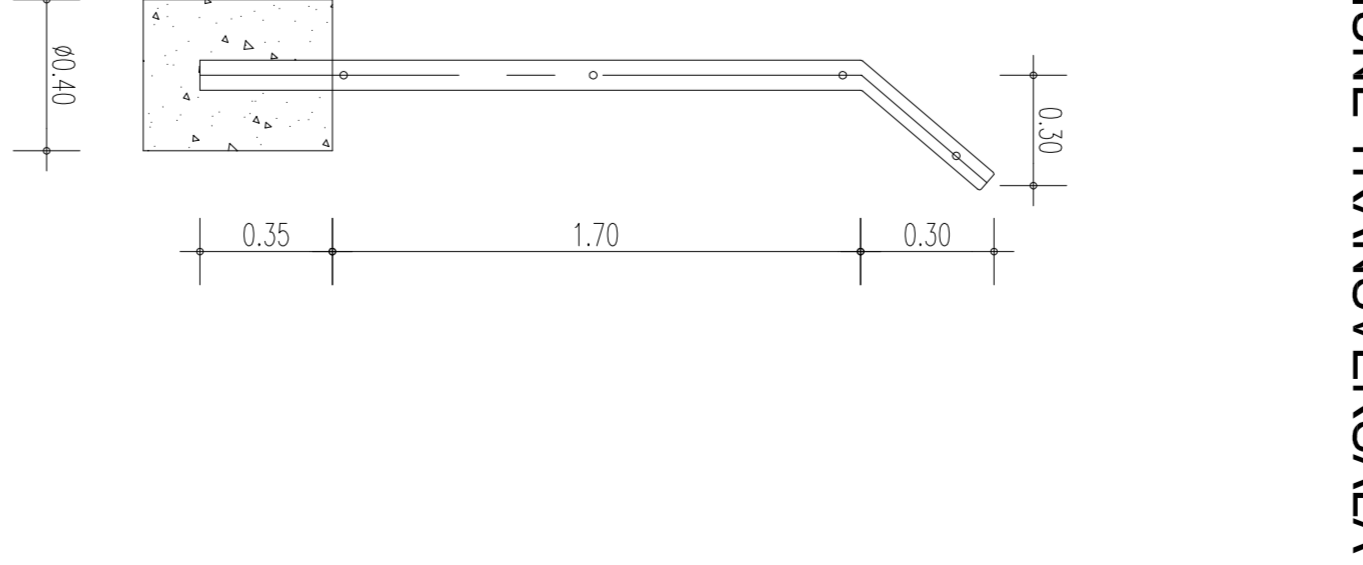
LEAN CONCRETE

- Type 1
- f_{yk} = 12 MPa
- Cement type CEM I/V

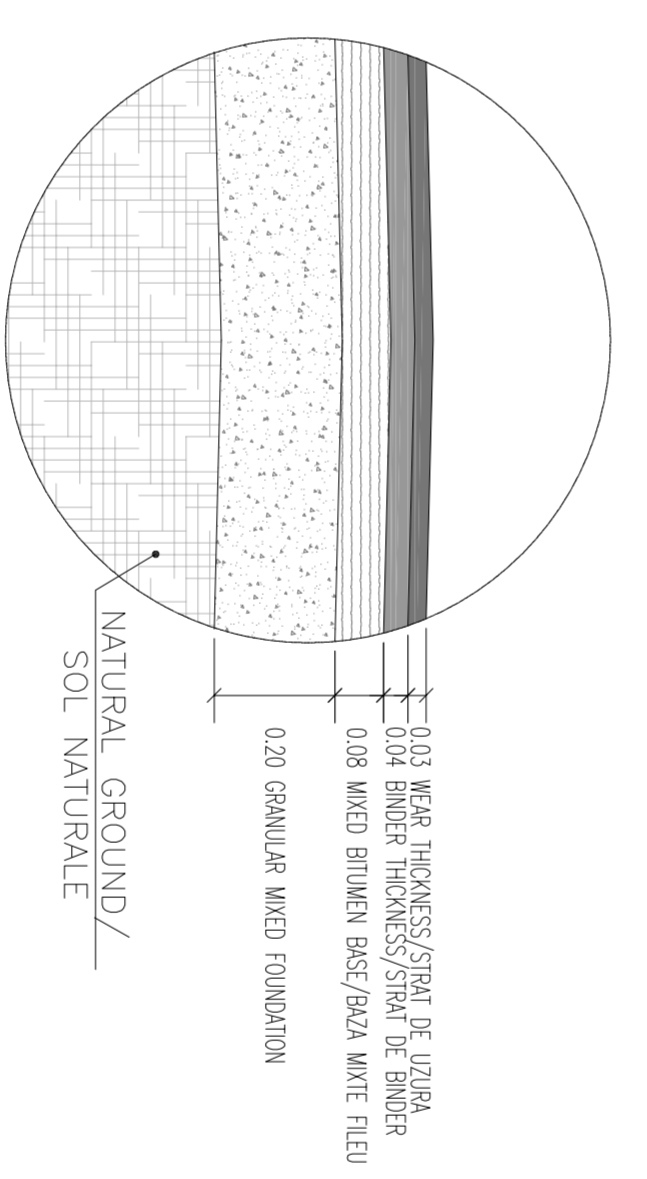
FENCE DETAIL/DETALIU GARD
Scale/Scale 1:20
ELEVATION/
ELEVATIE



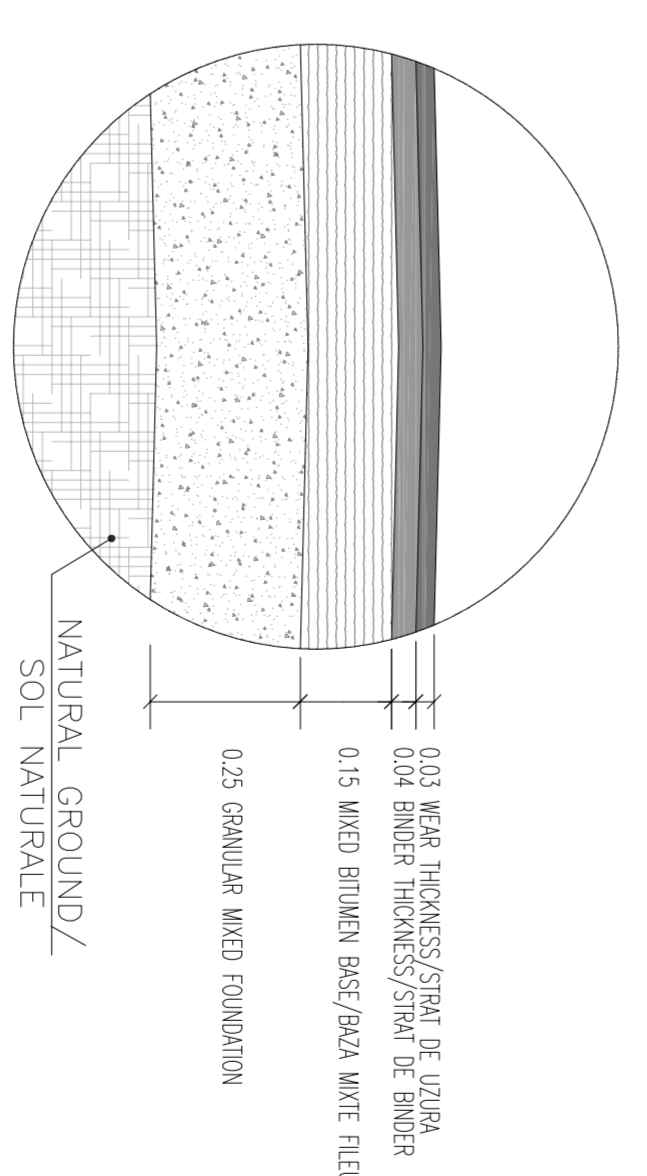
CROSS SECTION/
SECȚIUNEA TRANSVERSALĂ



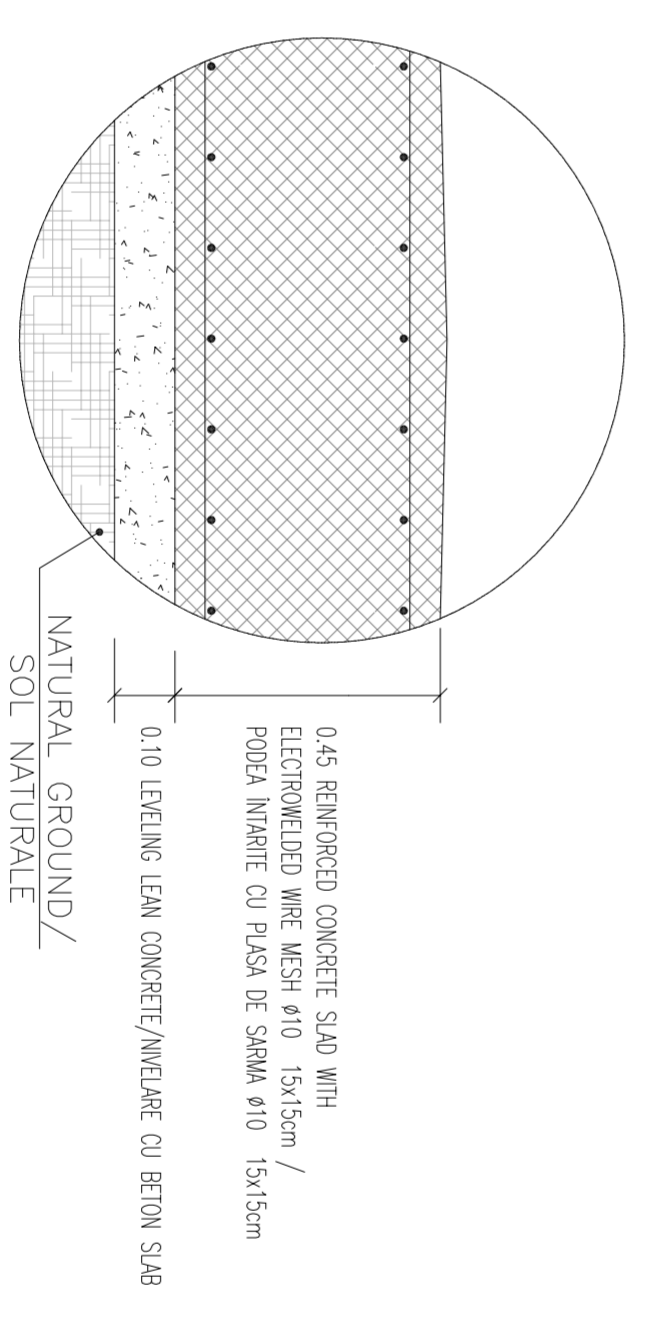
DETALU/DETALIU "A"



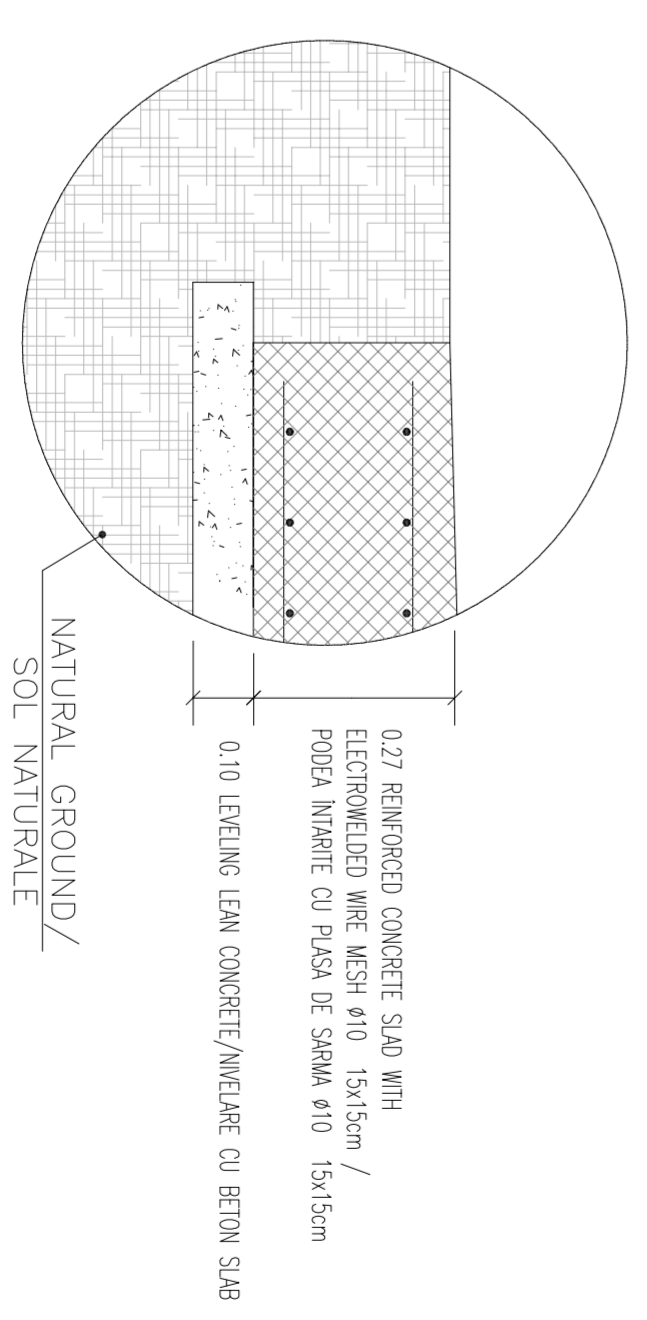
DETALU/DETALIU "B"



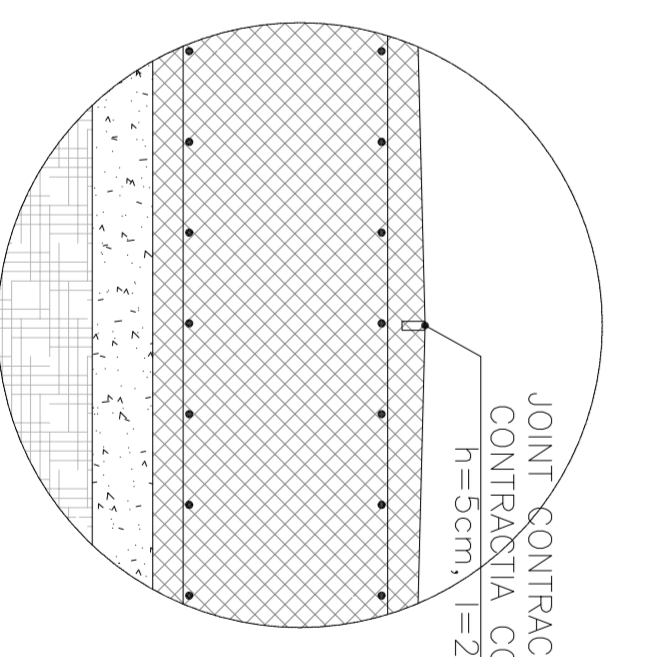
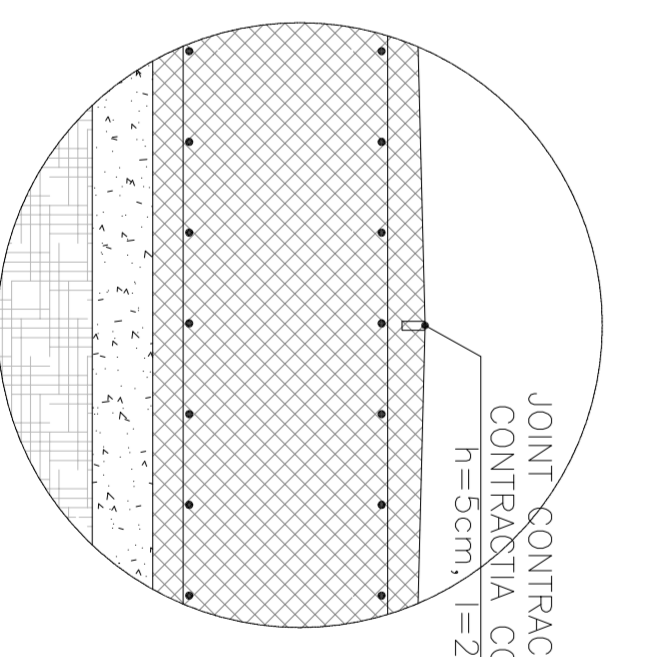
DETALU/DETALIU "C"



DETALU/DETALIU "D"



JOINT CONTRACTION/CONTRACTIA COMUN



0							
1							
2							
3							
4							
5							
6							
7							
8							
9							

CLIENT / CLIENT

GOVERNUL ROMANIEI
ROMANIAN GOVERNMENT

PROIECT FINANȚAT DE UNIUNEA EUROPEANĂ
EUROPEAN UNION FINANCED PROJECT

CLIENT / CLIENT

CN.C.F. "C.F.R." - S.A.

CONSULTANT / CONSULTANT

TECNIC
Consulting Engineers

CONSULTANT / SUBCONSULTANT

APROBAT / APPROVED

PROIECT / PROJECT

2004/R01/05/2002
Faza / Phase: P.I.N. / I.D.

DESCRIȚIE / DESCRIPTION

Reabilitarea liniei de cale ferată Brașov - Sibiu, prin componenta a cordoanelor IV Pan European, pentru decalajul trenurilor cu viteză maximă de 180 km/h.

Rehabilitation of the railway line Brașov - Sibiu, component Part of the IV Pan European, for decalage train with maximum speed of 180 km/h.

Denunțiere desen / Drawing Title : **HOMOROD TUNNEL**

Helicopter Landing Pad
Planșă de structură elevație - planșă în detaliu

Scale / Scale: 1:20

Sheet / Sheet: 01

Variant / Variant: 01

Lot / Lot: 01

Revizii / Revisions: 0