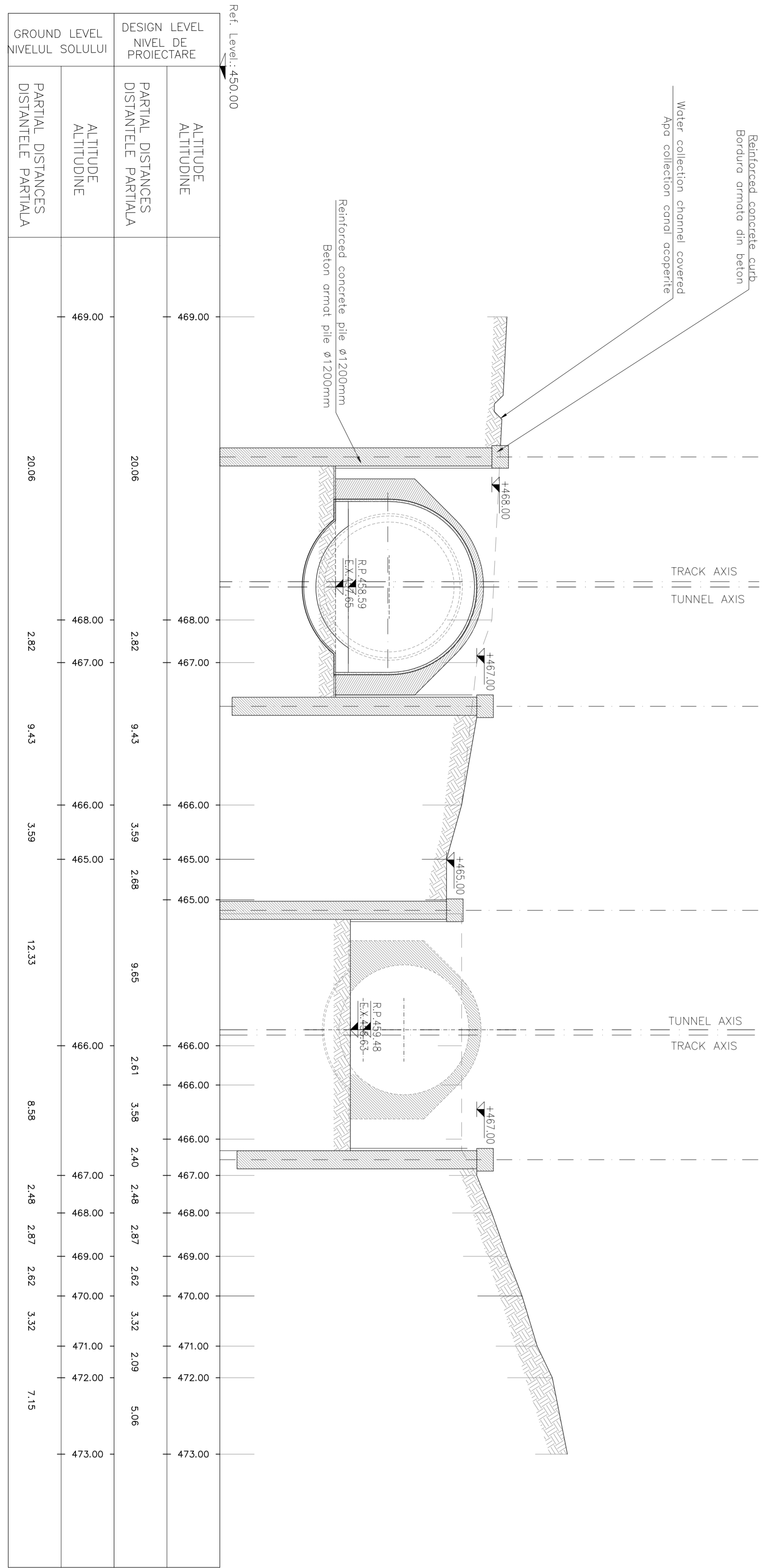
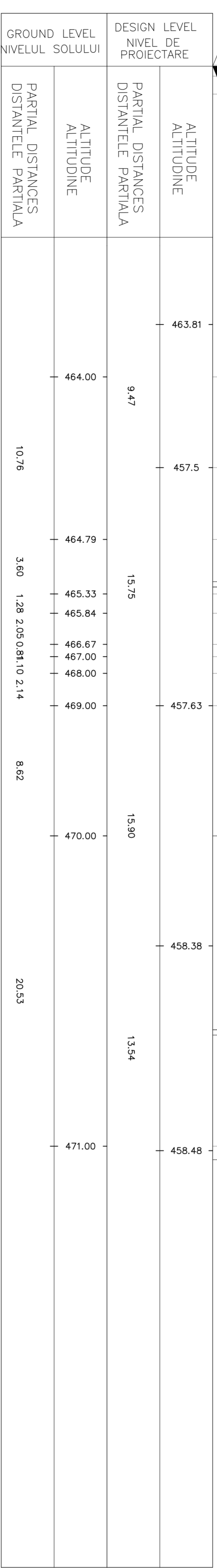
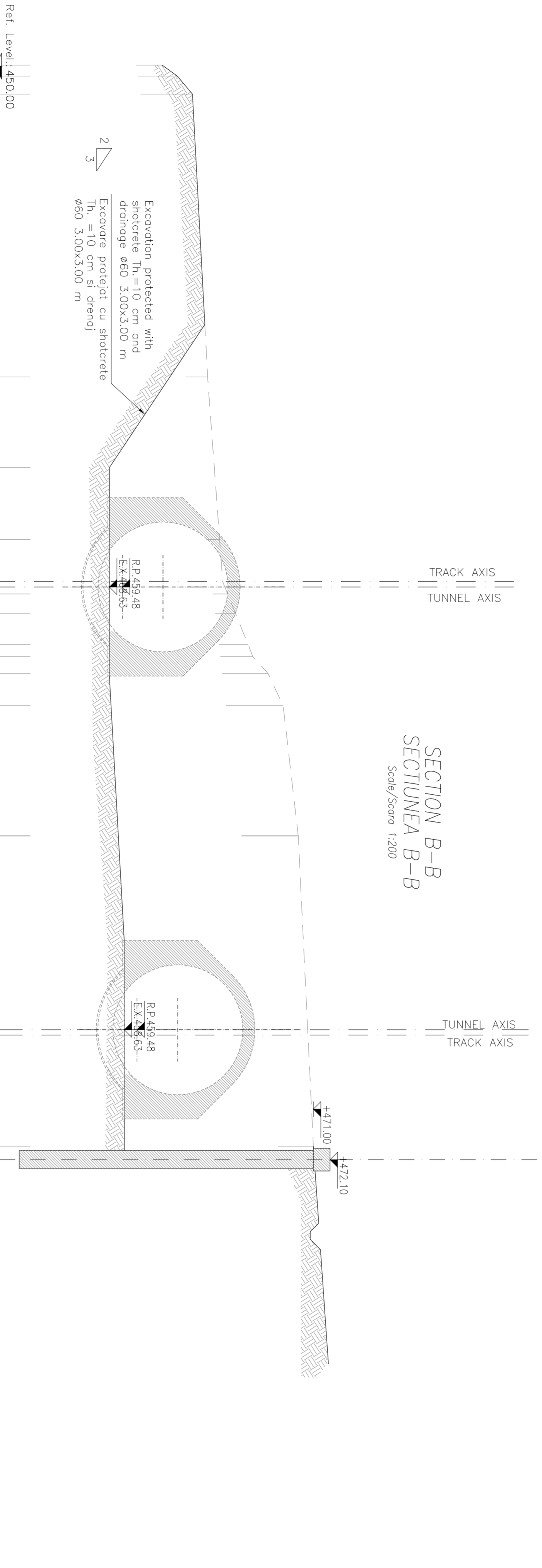
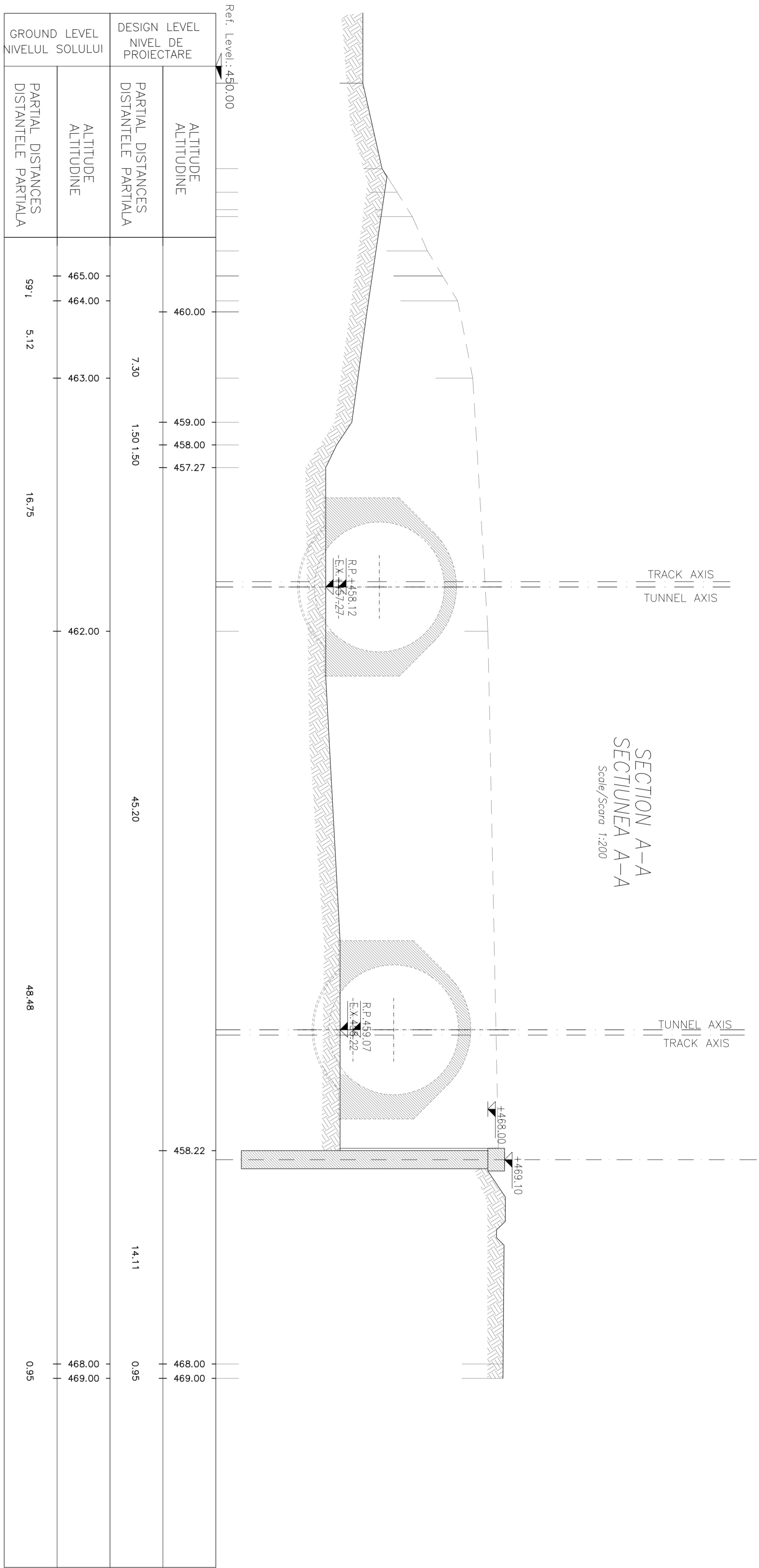
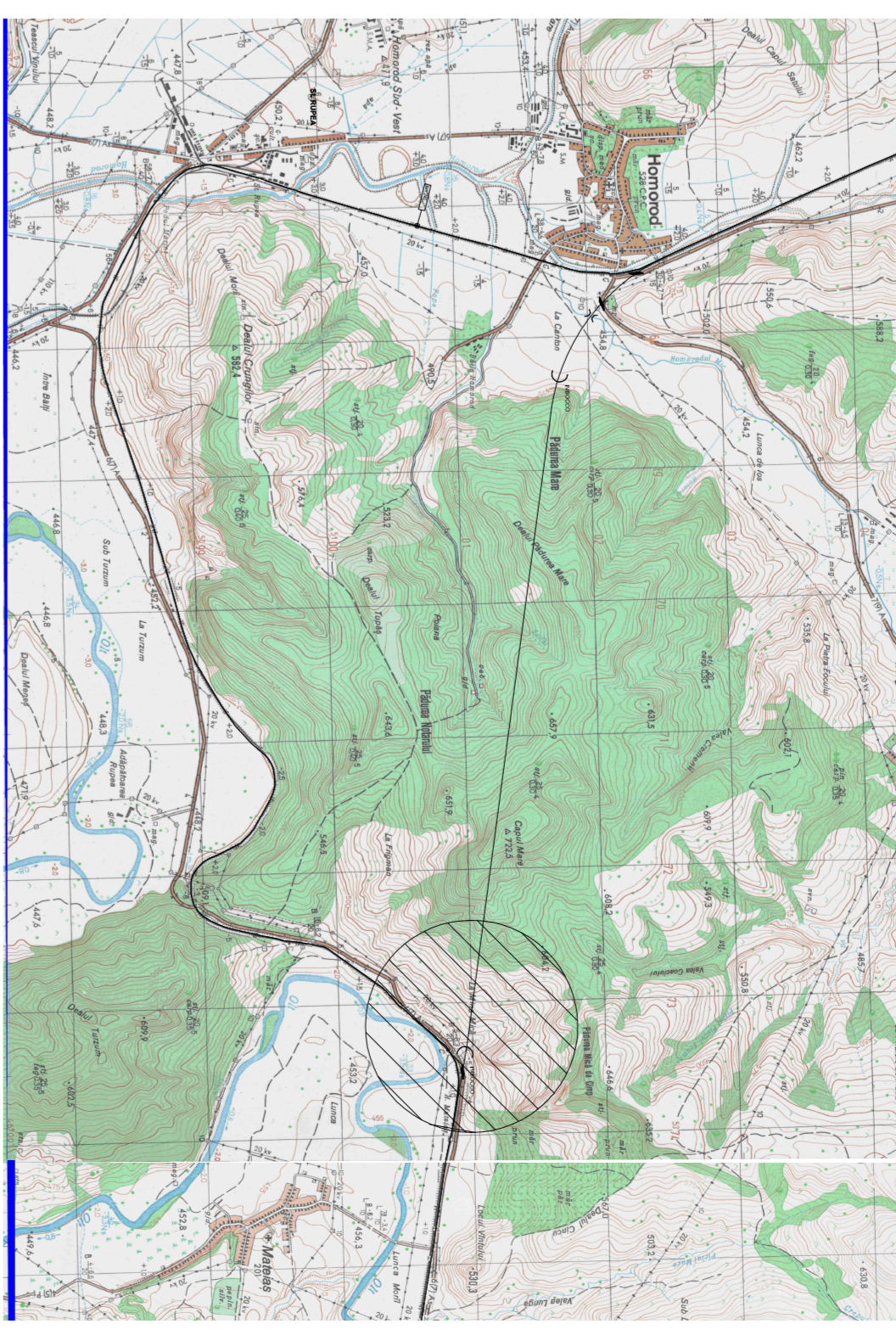


GENERAL PLAN / PLANUL GENERAL



NOTE/NOTA  
PILE WALL PROTECTED WITH SHOTCRETE Th=10cm REINFORCED WITH STEEL MESH #6 15 X 15 cm  
PROTEJARE CU PEREȚI ȘIȘOTCRETE Th=20cm ȘI ARMAȚE CU REȚEA #6 15 X 15 cm

MATERIAL TABLE  
ȘIȘOTCRETE  
- C 20/25  
I#6 5x20 U#6  
REINFORCING STEEL FOR ȘIȘOTCRETE  
- B&S&C certified by establishment  
- Mesajele

LEGEND  
BP = REFERENCE PLANE  
EX = EXCAVATIONS PLANE  
PC = CENTERS PLANE

0					
C					
B					
A					
Index	Date	Modificarea	Proiectant	Aprobare	Amplasare

CLIENT / CLIENT  
C.N.C.F. "C.F.R." S.A.

CONSULTANT / CONSULTANT  
SCOTT WILSON OBERMAYER CONSULTING ENGINEERS

SUBCONSULTANT / SUBCONSULTANT  
R. Lizza, C. Gambelli, C. Gambelli

PROIECT/PROIECT  
Reabilitarea liniei de cale ferată Buzov - Simleu, partea componentă a condiționalului IV Pan European, parte componentă a proiectului de finanțare prin Fondul de Dezvoltare Regională al Uniunii Europene

Denumire desen / Drawing Title : HOMOIOD TUNNEL  
Etapă temporară Secțiune transversală - piata 2

Scale / Scală : 1:100  
Date / Data : 12.01.2020

E	A	1	0	1	C	1	2	W	9	G	A	0	3	0	2	0	0	1	0
---	---	---	---	---	---	---	---	---	---	---	---	---	---	---	---	---	---	---	---