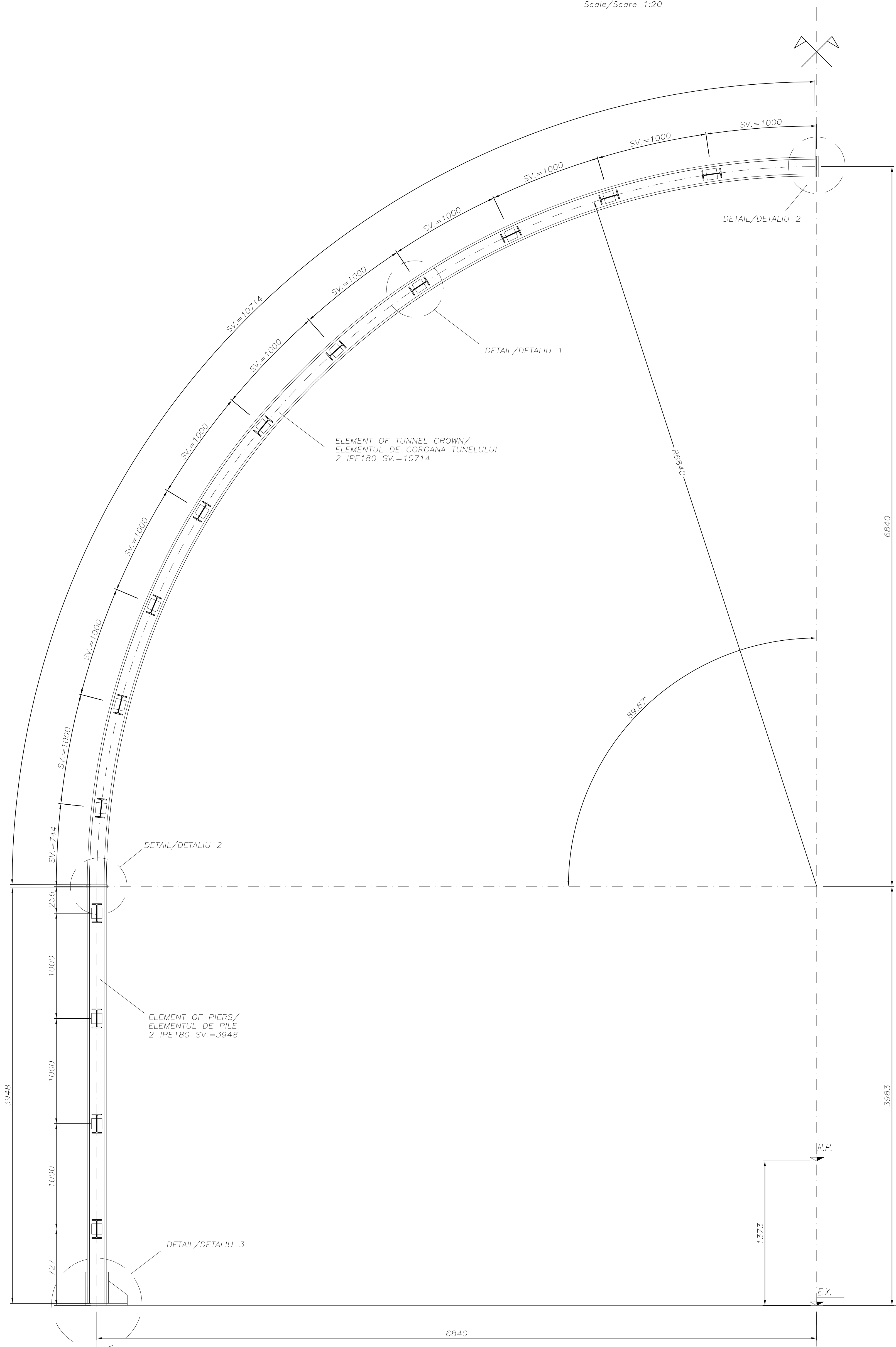
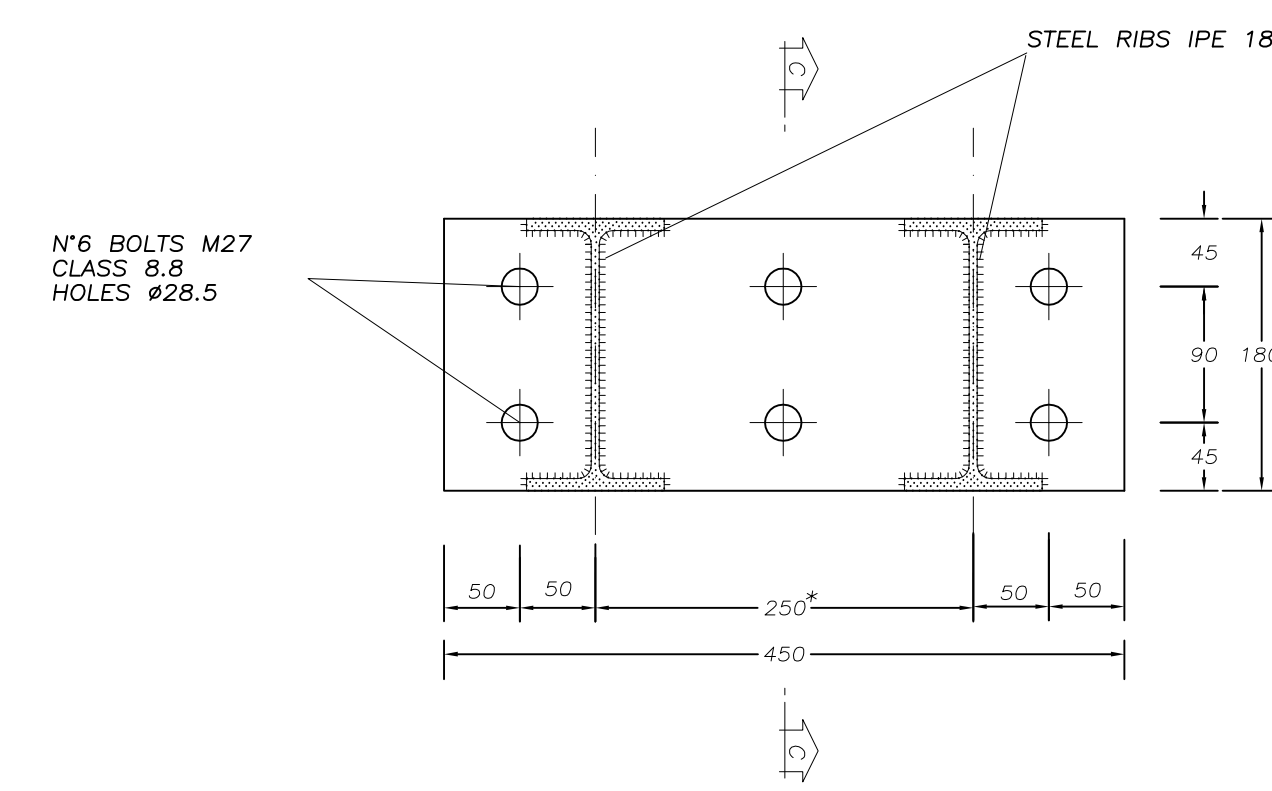


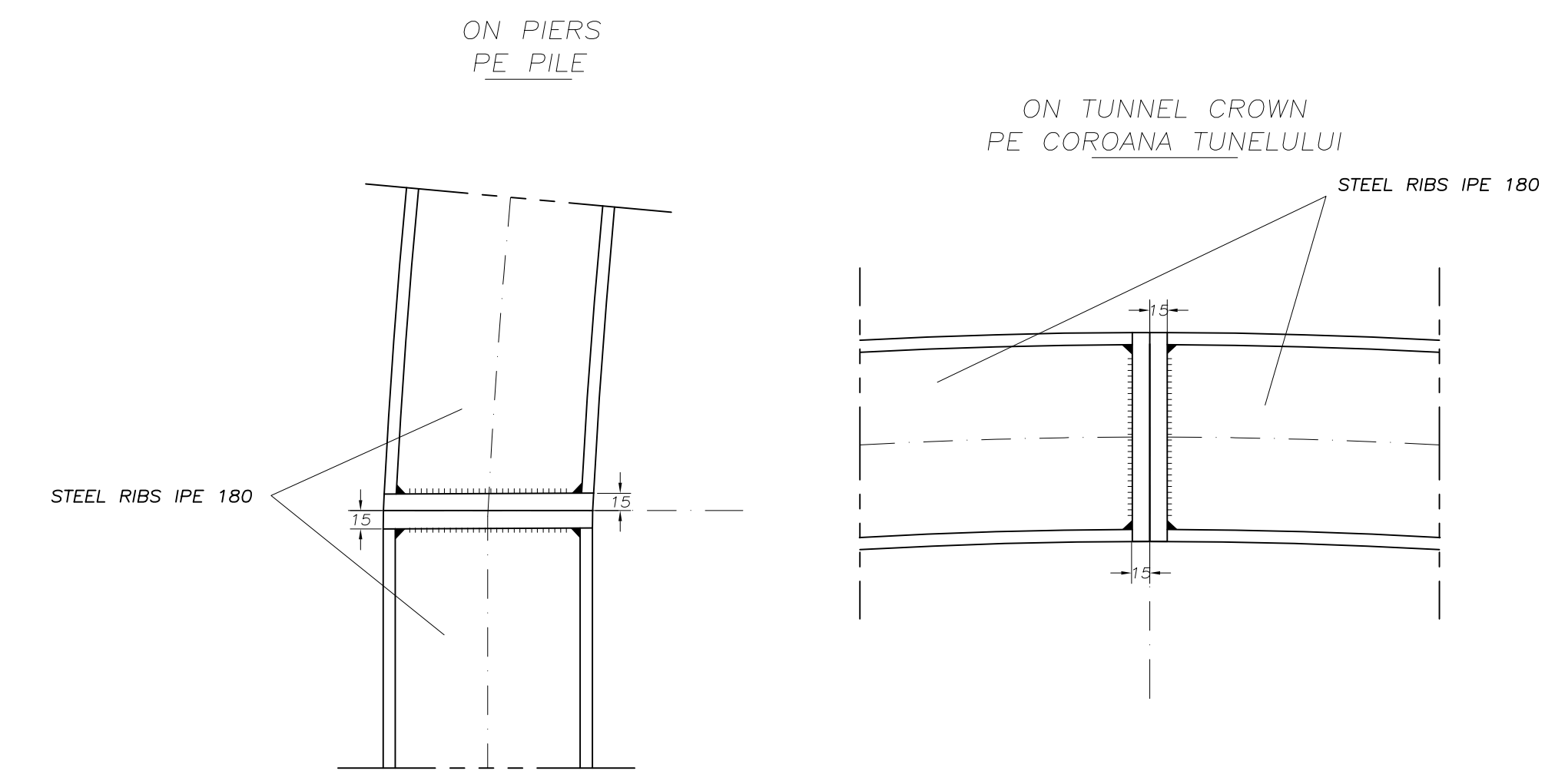
STEEL RIBS TYPE 2 IPE 180
NERVURI DIN OTEL TIP 2 IPE 180
Scale/Scara 1:20



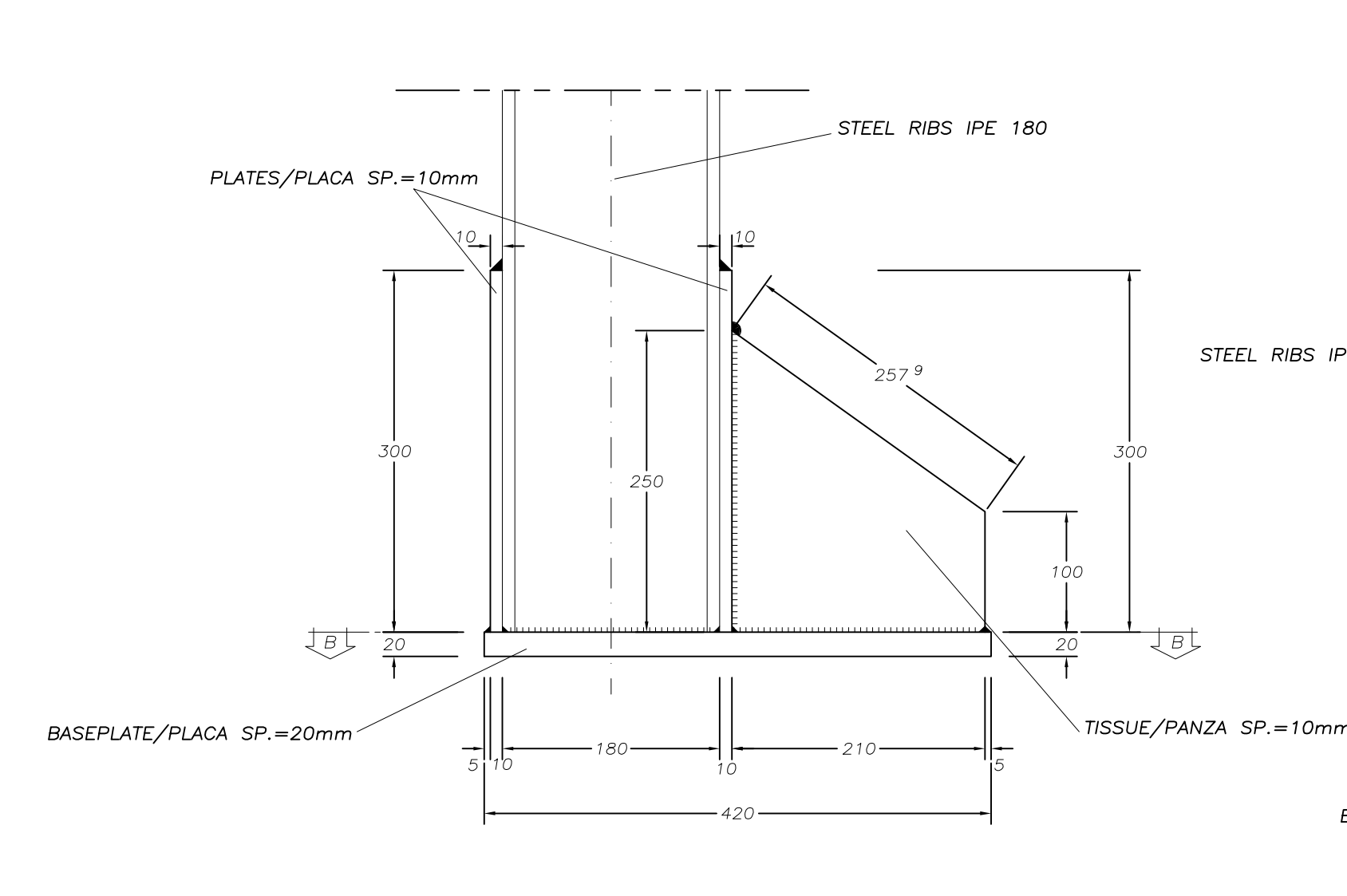
DETAIL "1"
DETALIU "1"
Scale/Scara 1:5



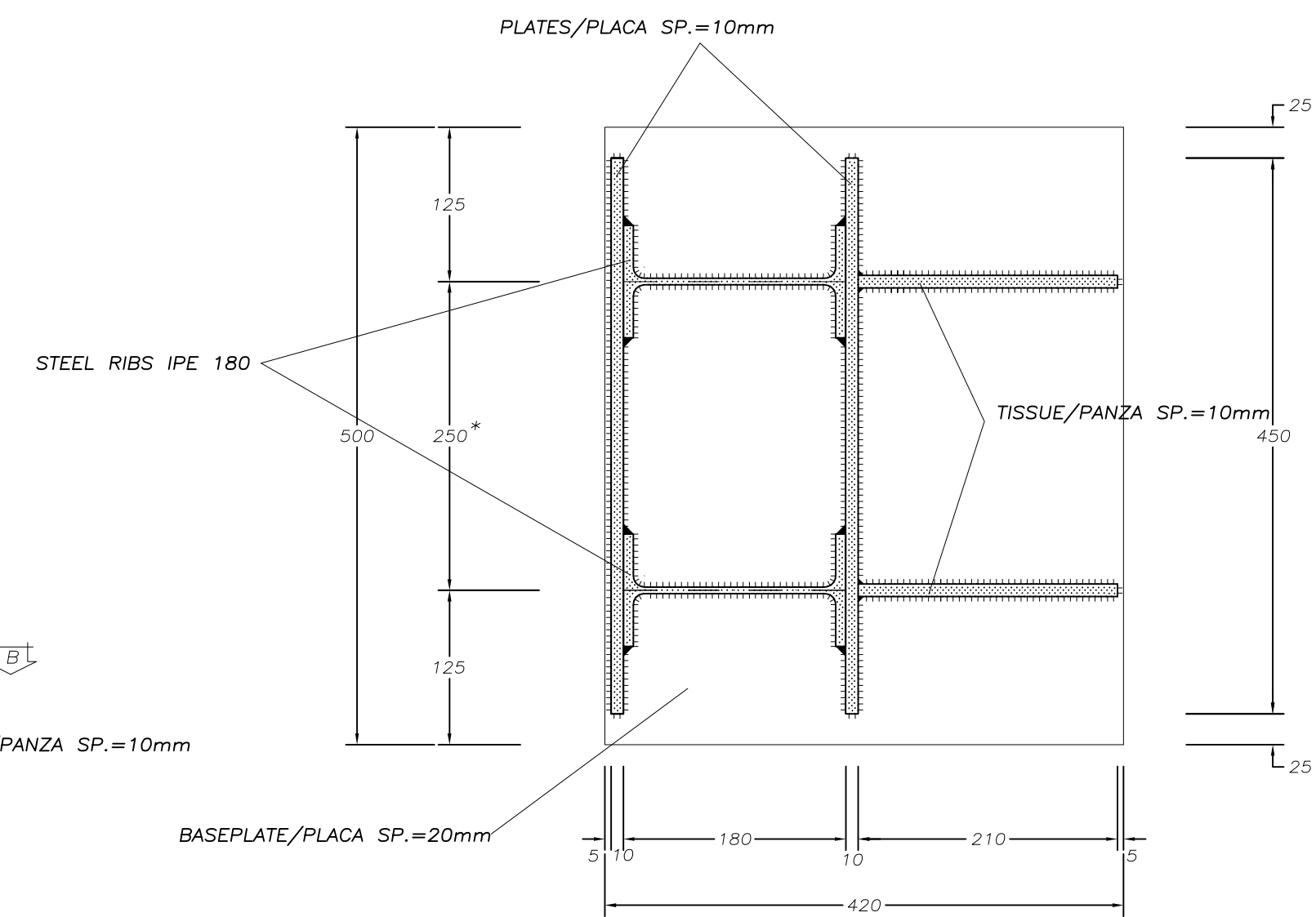
SECTION A-A
SECTIUNI A-A
Scale/Scara 1:5



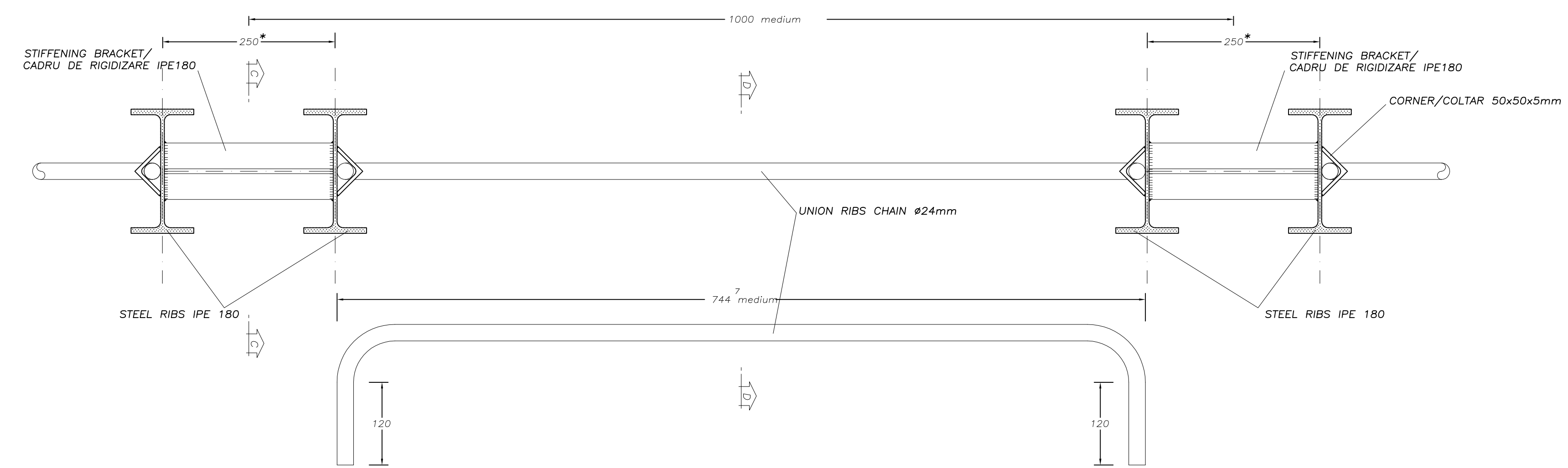
DETAIL "2"
DETALIU "2"
Scale/Scara 1:5



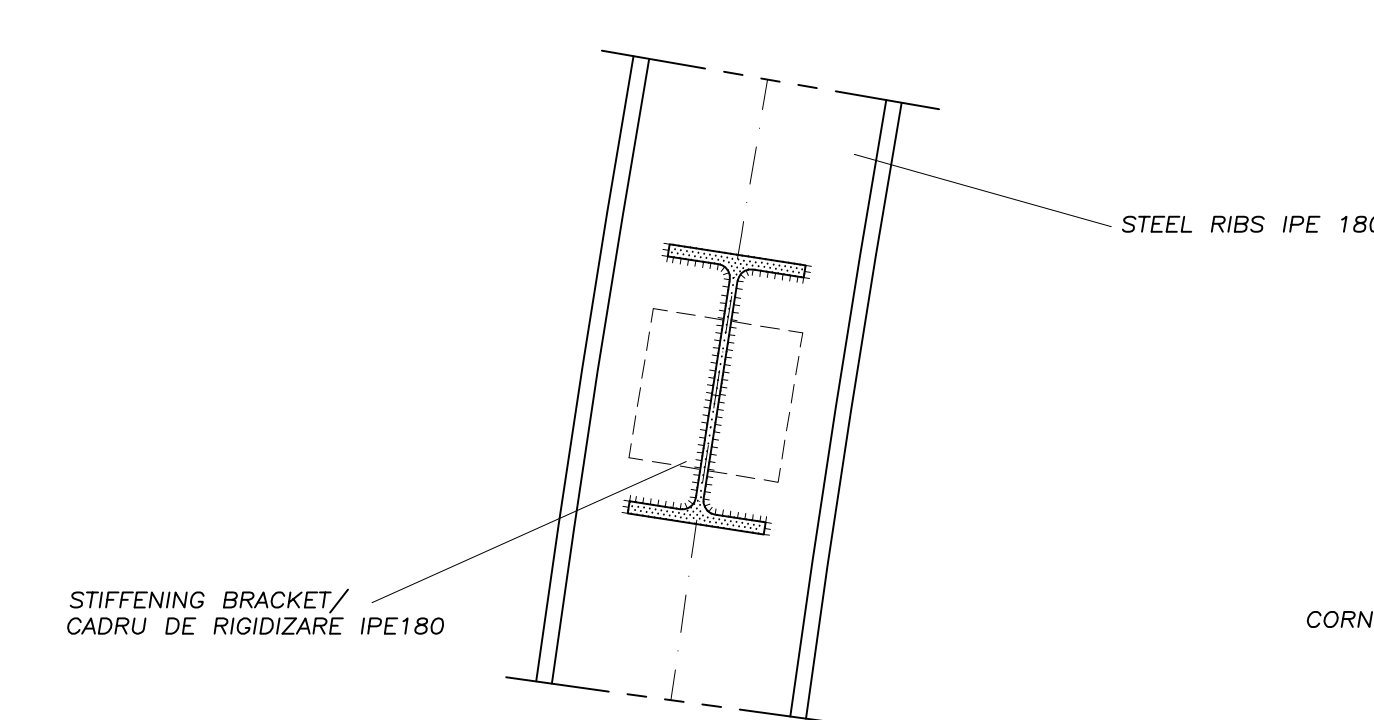
SECTION B-B
SECTIUNI B-B
Scale/Scara 1:5



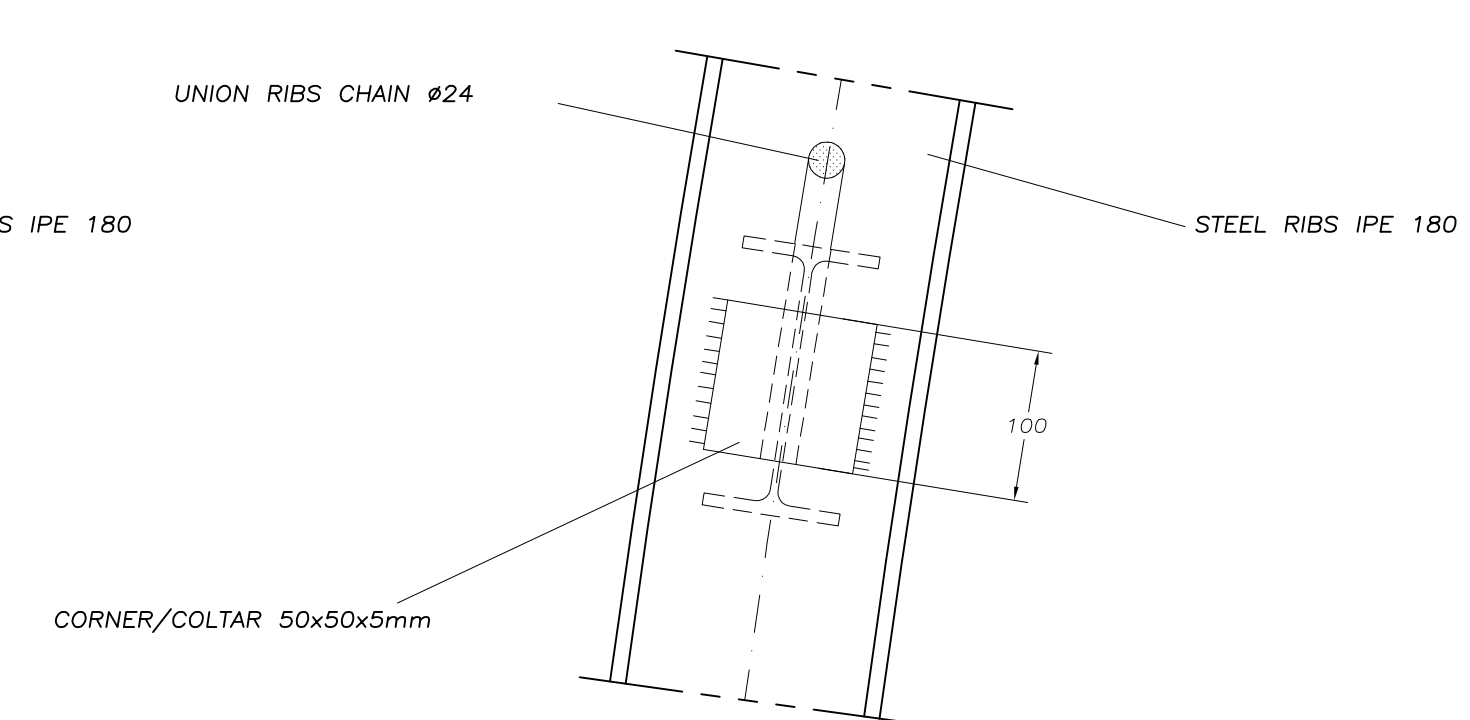
DETAIL "3"
DETALIU "3"
Scale/Scara 1:5



SECTION C-C
SECTIUNI C-C
Scale/Scara 1:5



SECTION D-D
SECTIUNI D-D
Scale/Scara 1:5



MATERIAL TABLE

RIBS, PLATE, STIFFENING, BRACKET, CORNER :

- S 275
- $f_{tmax} = 430$ MPa
- $f_{ymin} = 275$ MPa

CHAINS :

- B450C controlled by establishment
- Weldable

MATERIAL TABLE

NERVURA DE OTEL, SECTIUNI CUPLATE, CADRU DE RIGIDIZARE, UNGHIIURI :

- S 275
- $f_{tmax} = 430$ MPa
- $f_{ymin} = 275$ MPa

LANT :

- B450C controlat de catre unitate
- Sudabil

LEGEND

RP = REFERENCE PLANE
EX = EXCAVATIONS PLANE
PC = CENTERS PLANE

D					
C					
B					
A					
Index	Date	Modification/Revision	Projectant	Approved Consultant	Approved CFR

GUVERNUL ROMANIEI / ROMANIAN GOVERNMENT

PROIECT FINANATAT DE UNIUNEA EUROPEANA / EUROPEAN UNION GOVERNMENT PROJECT

CFR C.N.C.F. "C.F.R." - S.A.

CLIENT / CLIENT

ITALFER, Scot Wilson, OBERMEYER, TECNIC

CONSULTANT / CONSULTANT

Approved	Self project	R. Liuzza		
Approved	Coordinator	C. Gambelli		
Verified	Tunnel Expert	C. Gambelli		
Checked	Tunnel Expert	C. Gambelli		
Elaborated	Designer	C. Gambelli		

SUBCONSULTANT / SUBCONSULTANT

Approved	Responsabil Subconsultant			
Elaborated	Designer			

Rehabilitarea liniei de cale ferata Brasov - Simeria, parte componenta a coridorului IV Pan European, pentru circulatia trenurilor cu viteza maxima de 160 km/h. Sectiune 1 Brasov - Sighisoara

Rehabilitation of the railway line Brasov - Simeria, component Part of the IV Pan-European Corridor, for the trains circulation with maximum speed of 160 km/h. Section 1 Brasov - Sighisoara

Project/Project 2004/RO/16/PA/002

Faza / Phase: P.Th. / T.D.

Denumire desen / Drawing Title : MURENI TUNNEL ENTRANCE ARCHITECTURE Starting framework: formwork steel ribs and detail Inceputul cadrului: cofraje de nervuri din otel si detalii

Codificare / Codification System	Scara / Scale	LOT	№ / No
E A 5 1	0 1 C 1 6 B B	G A 1 0 0 0	0 0 2 0