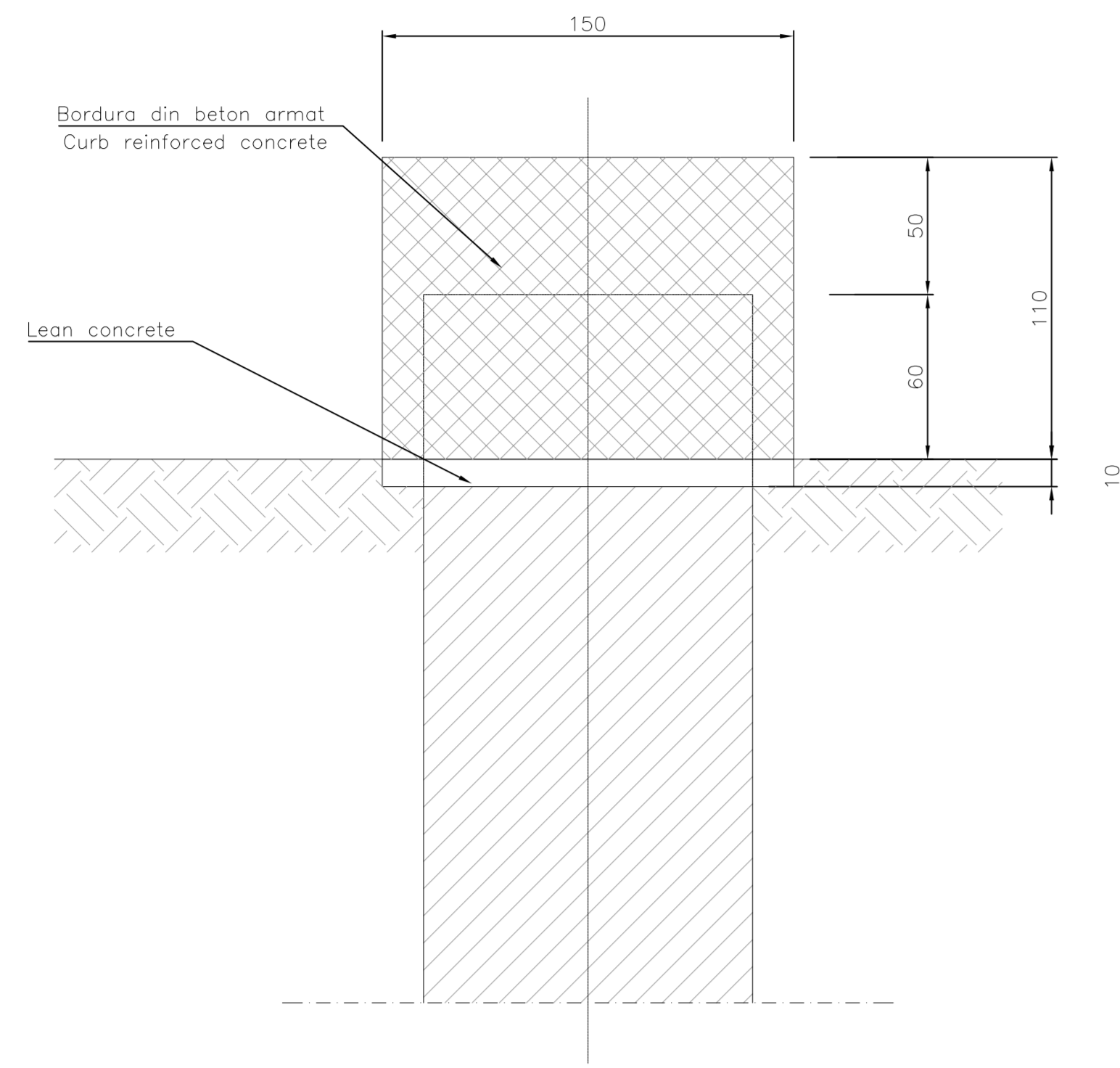
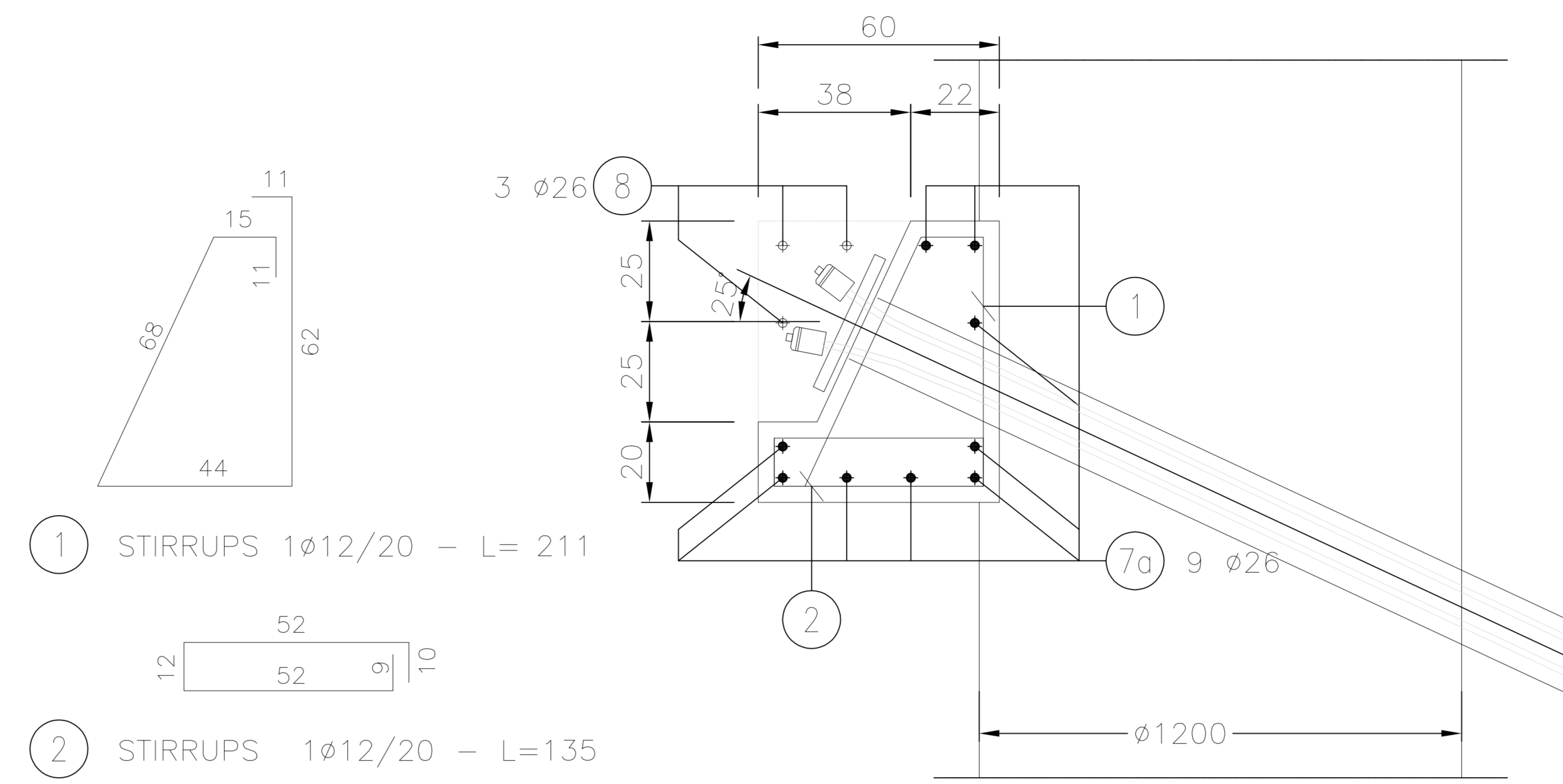


CURB REINFORCED CONCRETE
BORDURA DIN BETON ARMAT
Formworks/Cofraje
Scale/Scale 1:20



CURB REINFORCED CONCRETE WITH TENDONS-TYPE 2
BORDURA DIN BETON ARMAT CU FRÂNGHIE-TIP 2
Reinforcments/Armaturi
Scale/Scale 1:10

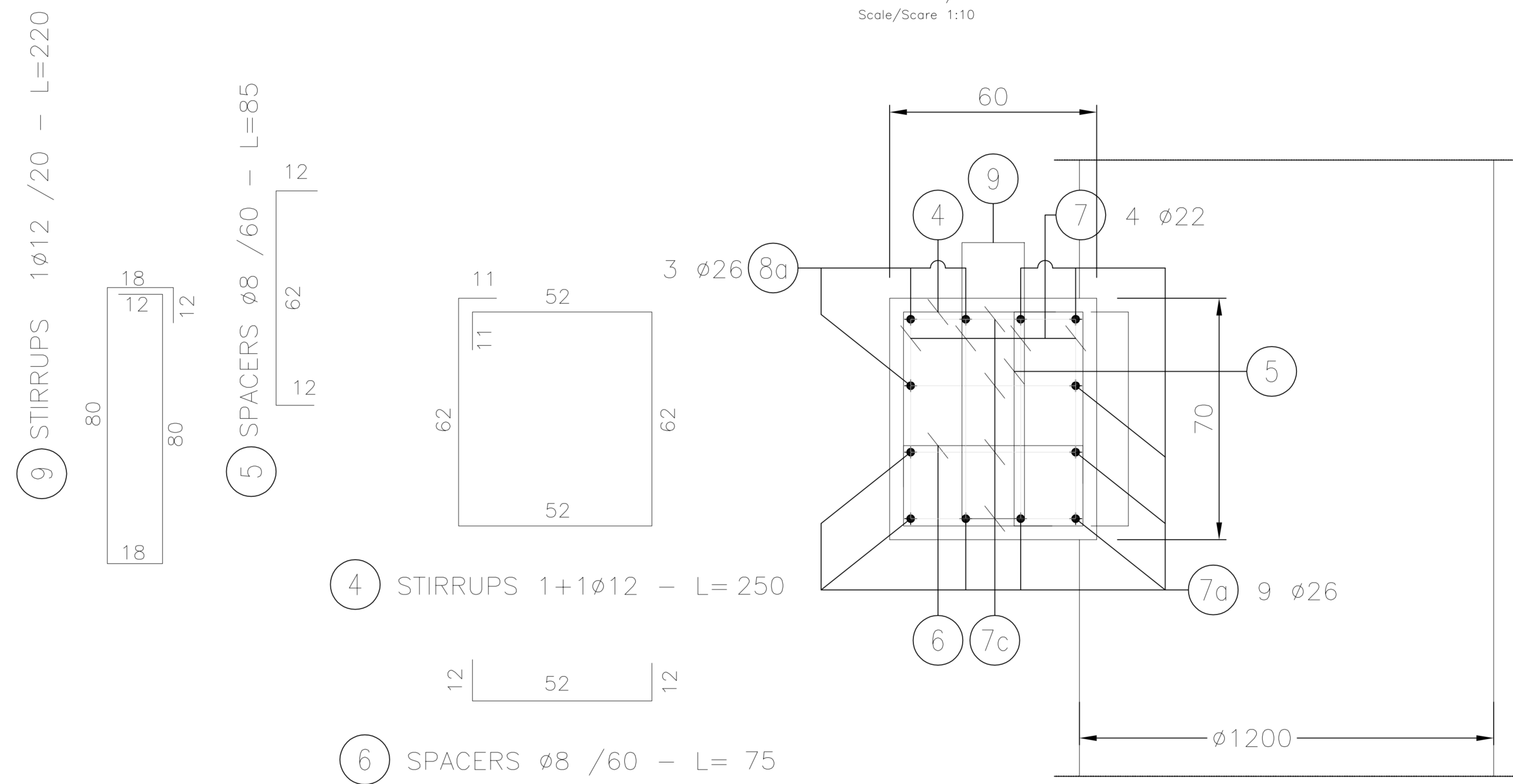


1 STIRRUPS 1Ø12/20 - L= 211

2 STIRRUPS 1Ø12/20 - L=135

STEELS TABLE	
REINFORCING STEEL:	
- B450C (weldable)	
Bending diameter d_{br} :	
ϕ Bar < $\phi 20 \rightarrow d_{br} = 6\phi$	
ϕ Bar $\phi 20 - \phi 26 \rightarrow d_{br} = 8\phi$	
Legend measures:	
MATERIAL TABLE	
CONCRETE PILE:	
- Type H2	
- $f_{ck} \geq 25$ MPa	
- Water/cement ratio < 0.50	
- Minimum structural Class S4/S5	
- Cement type CEM III/V	
- Class of chloride content Cl 0.20	
- ϕ max aggregate = 22.4 mm	
CONCRETE CURB:	
- Type H2	
- $f_{ck} \geq 25$ MPa	
- Water/cement ratio < 0.50	
- Minimum structural Class S4/S5	
- Cement type CEM III/V	
- Class of chloride content Cl 0.20	
- ϕ max aggregate = 22.4 mm	
REINFORCING STEEL:	
- B450C controlled by establishment	
- Weldable	
LEAN CONCRETE:	
- Type I	
- $f_{ck} \geq 12$ MPa	
- Cement type CEM I/V	

CURB REINFORCED CONCRETE-TYPICAL SECTION
BORDURA DIN BETON ARMAT-SECTIUNI TIP
Reinforcments/Armaturi
Scale/Scale 1:10



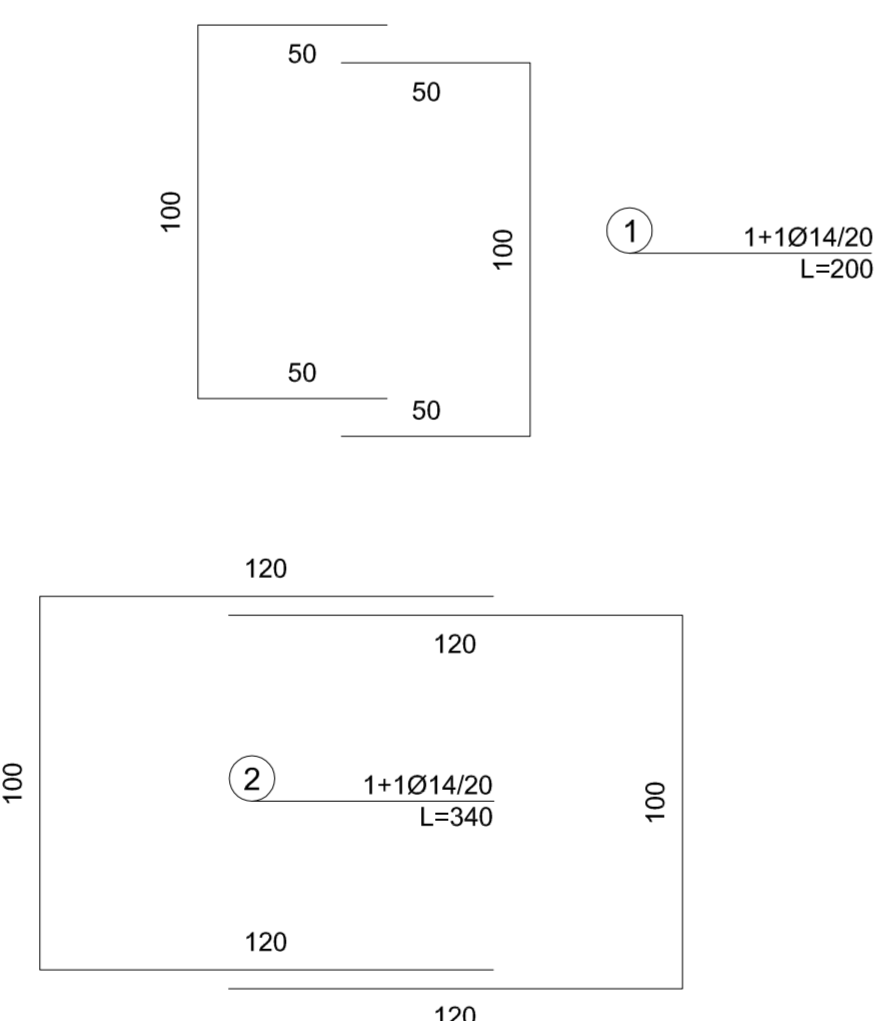
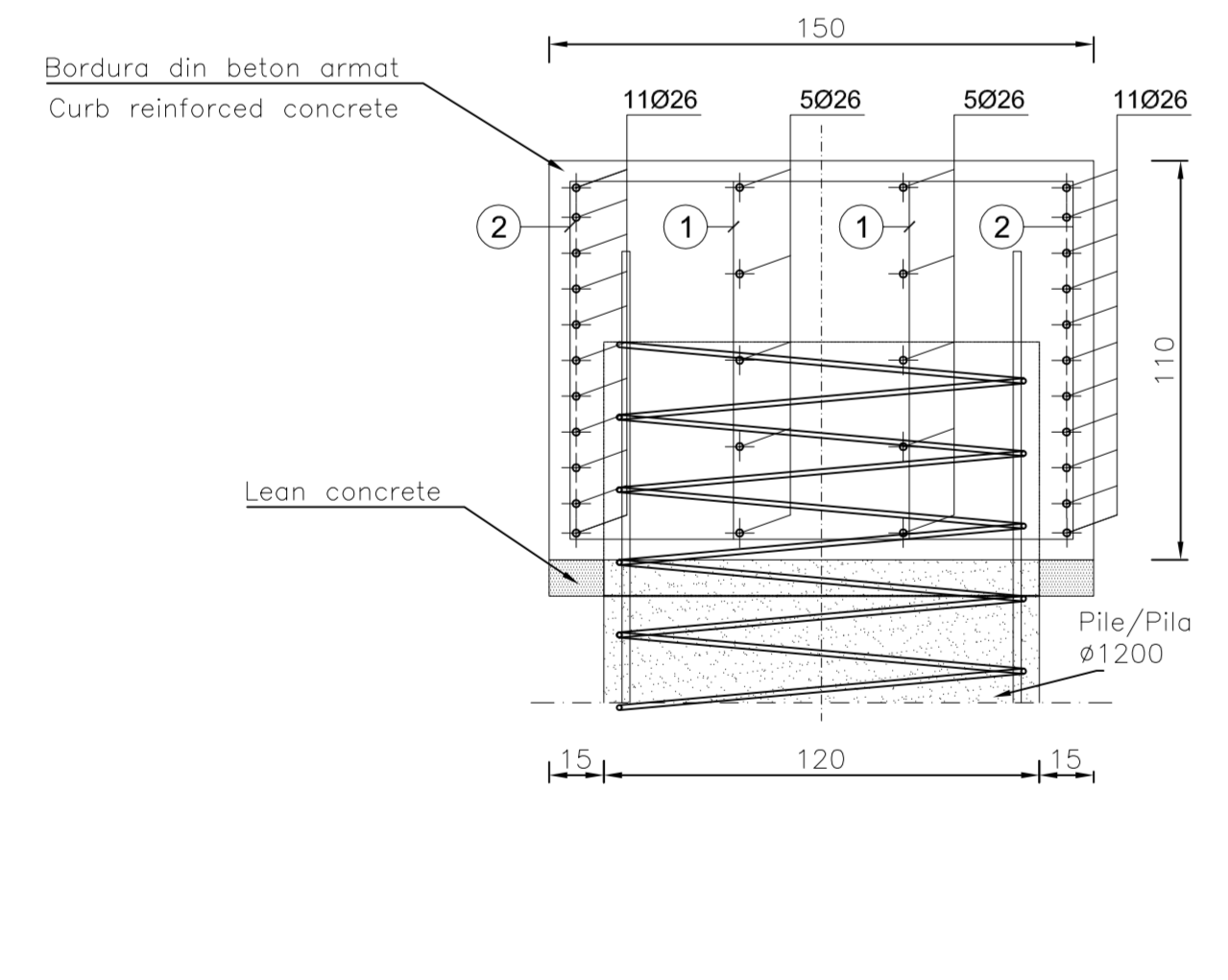
9 STIRRUPS 1Ø12 / 20 - L=220

5 SPACERS Ø8 / 60 - L=85

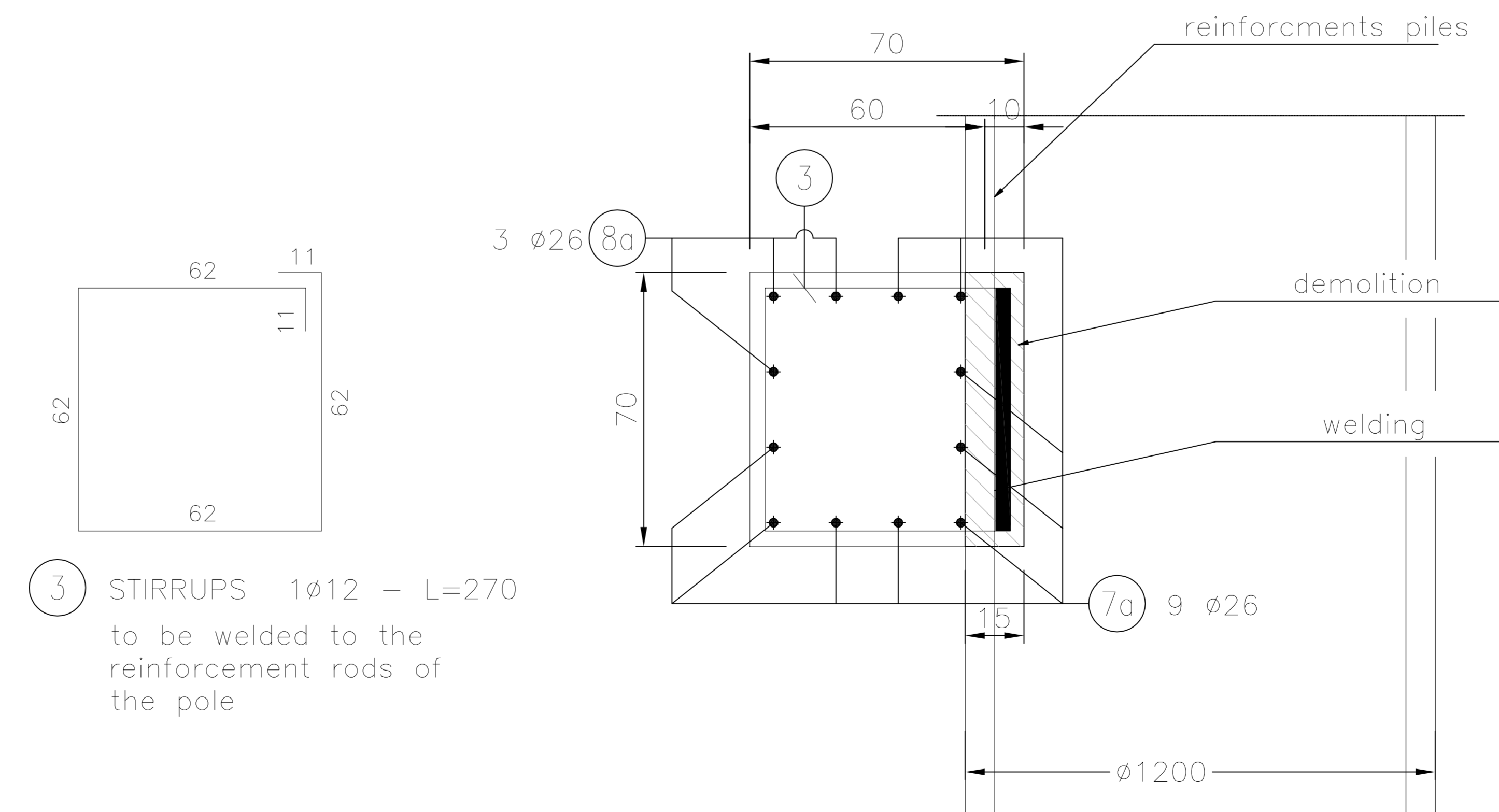
4 STIRRUPS 1+1Ø12 - L= 250

6 SPACERS Ø8 / 60 - L= 75

CURB REINFORCED CONCRETE -TYPE 1
BORDURA DIN BETON ARMAT-TIP 1
Reinforcments/Armaturi
Scale/Scale 1:20



CURB REINFORCED CONCRETE ON PILES
BORDURA DIN BETON ARMAT DEASUPRA PILA
Reinforcments/Armaturi
Scale/Scale 1:10



3 STIRRUPS 1Ø12 - L=270
to be welded to the reinforcement rods of the pole

D	C	B	A	Index	Date	Modificari	Projectant	Approved Consultant	Approved CFR											
GUVERNUL ROMANIEI ROMANIAN GOVERNMENT		PROIECT FINANȚAT DE UNIUNEA EUROPEANĂ EUROPEAN UNION FINANCED PROJECT																		
CLIENT / CLIENT																				
CONSULTANT / CONSULTANT																				
Approved	Self project	Project manager		R. Liuzza		Data		Semnatura												
Approved	Coordinator	Section 1 Coordinator		C. Gambelli																
Verified	Tunnel Expert	Tunnel Expert		C. Gambelli																
Elaborated	Project	Designer		C. Gambelli																
SUBCONSULTANT / SUBCONSULTANT																				
Approved	Responsabil	Subconsultant																		
Reabilitarea liniei de cale ferată Braşov - Simeria, parte componentă a coridorului IV Pan European, pentru circulația trenurilor cu viteză maximă de 160 km/h. Secțiunea 1 Braşov - Sighisoara																				
Rehabilitation of the railway line Braşov - Simeria, component Part of the IV Pan-European Corridor, for the trains circulation with maximum speed of 160 km/h. Section 1 Braşov - Sighisoara																				
Denumire desen / Drawing Title : MURENI TUNNEL																				
ENTRANCE ARCHITECTURE																				
Tunnel entrance concrete pile wall: curb reinforced concrete - formwork and reinforcement Piles din beton a peretului de la intrarea in tunel: bordura din beton armat - cofraje si armaturi																				
Codificare / Codification System																				
Scale / Scale																				
LOT																				
Nr. / No																				
E	A	5	1	0	1	C	1	6	B	Z	G	A	1	0	0	0	0	0	3	0