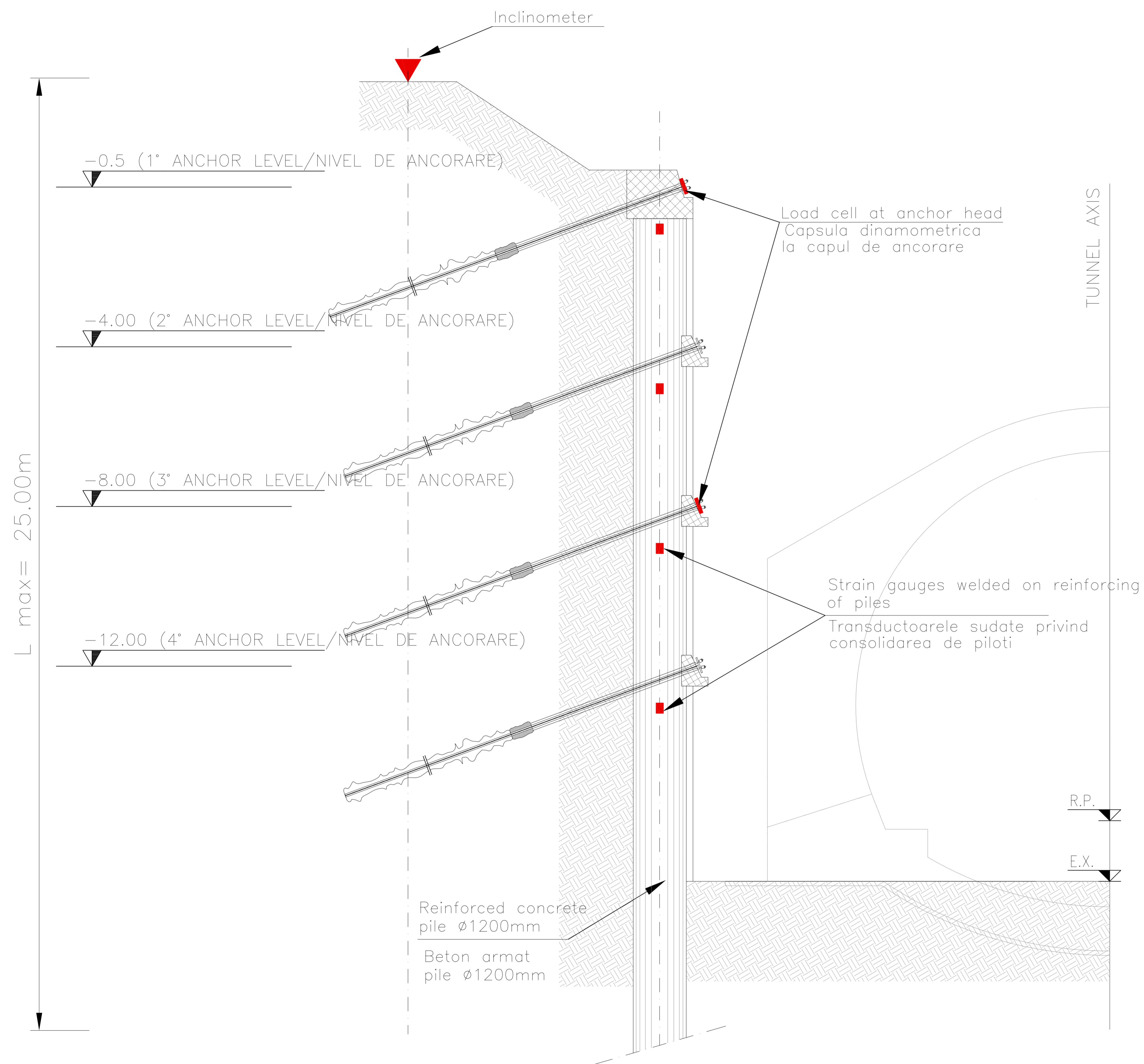
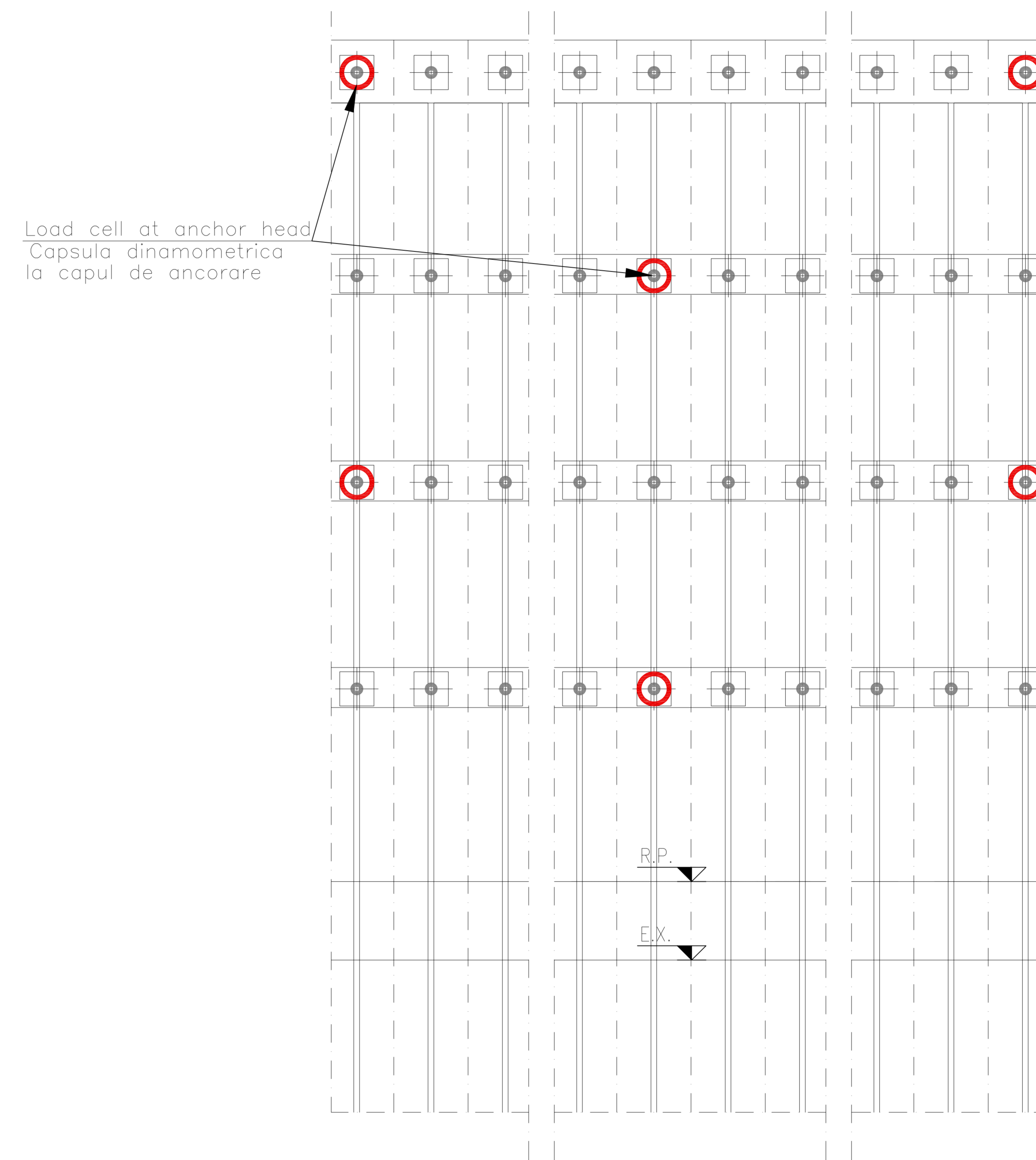


SECTION
SECTIUNEA
Scale/Scara 1:50



ELEVATION
ELEVATIE
Scale/Scara 1:50



NOTENOTA
DURING PILE WALL CONSTRUCTION WILL BE MONITORED THE STRUCTURES MOVEMENTS.
IF THE MEASURED MOVEMENTS WILL BE GREATER THAN THOSE INDICATED IN THE CALCULATION REPORT
FINAL MEASURES WILL BE MADE
LUCRAR IN CURS VA FI MONITORIZAT MISCARILE PERETELII. IN CAZUL IN CARE FURAJELE MAI MULT DECAT
CELE INDICATE IN CALCUL, RISPONDUL VA TREBUI SA FIEVA IN AFUDARE INTERVENTII DEFINITIVE.

D					
C					
B					
A					
Index	Date	Modificare / Revision	Proiectant / Designer	Approbat Consultant / Approved Consultant	Approbat CFR / Approved CFR
CLIENT / CLIENT					
CONSULTANT / CONSULTANT					Data Date
Approbat / Approved	Şef proiect / Project manager	R. Liuzza			
Approbat / Approved	Coordonator Secţiune 1 / Section 1 Coordinator	C. Gambelli			
Verificat / Checked	Tunel Expert / Tunnel Expert	C. Gambelli			
Intocmit / Elaborated	Proiectant / Designer	C. Gambelli			
SUBCONSULTANT / SUBCONSULTANT					
Approbat / Approved	Responsabil Subconsultant / Subconsultant Responsible				
Intocmit / Elaborated	Proiectant / Designer				
Reabilitarea liniei de cale ferată Braşov - Simeria, parte componentă a coridorului IV Pan European, pentru circulaţia trenurilor cu viteză maximă de 160 km/h. Secţiune 1 Braşov - Sighişoara					Project/Project 2004/RO/16/PA/002
Rehabilitation of the railway line Braşov - Simeria, component Part of the IV Pan-European Corridor, for the trains circulation with maximum speed of 160 km/h. Section 1 Braşov - Sighişoara					Faza / Phase: P.Th. / T.D.
Denumire desen / Drawing Title : MURENI TUNNEL		ENTRANCE ARCHITECTURE SIDE			
		Tunnel entrance concrete pile wall monitoring system			
		Piles din beton a peretelui de la intrarea în tunel: sistemul de monitorizare			
Codificare / Codification System		Scara / Scale	LOT	Nr. / No	
		varie		-	
E	A	5	1	0	1
C	1	6	WB	G	A
1	0	0	0	0	0
0	0	0	0	0	0