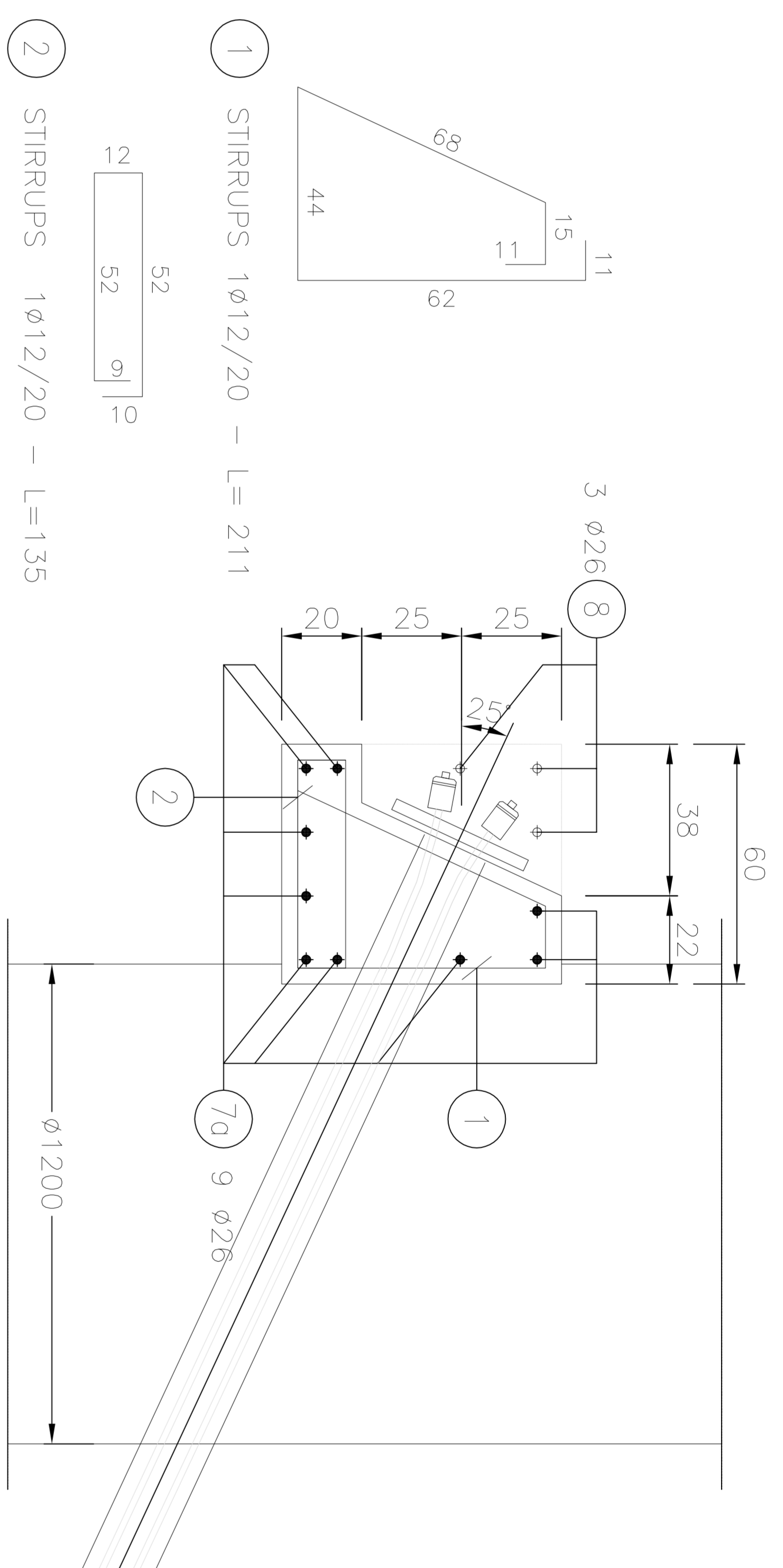
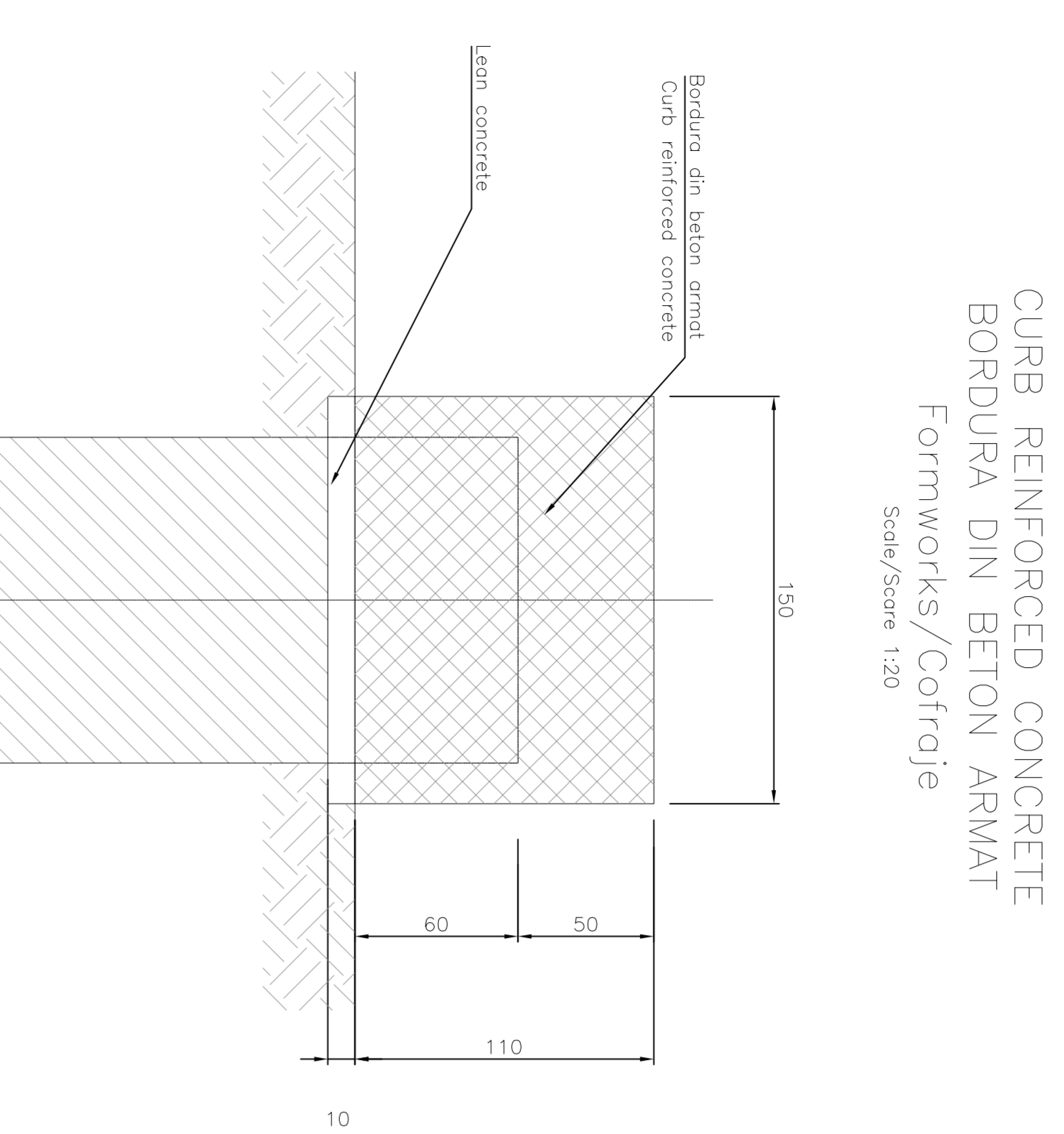
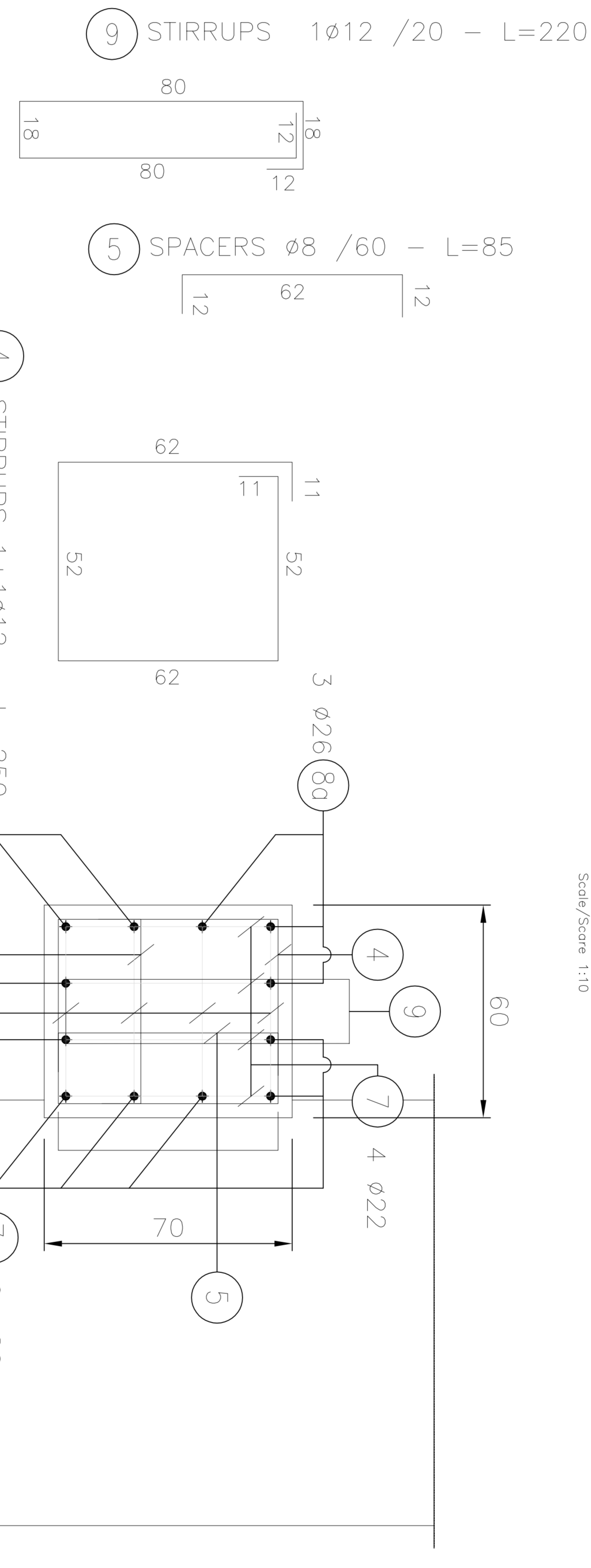


CURB REINFORCED CONCRETE WITH TENDONS-TYPE 2
 BORDURA DIN BETON ARMAT CU FRANGHIE-TIP 2
 Reinforcements/Armături
 Scale/Scale 1:10

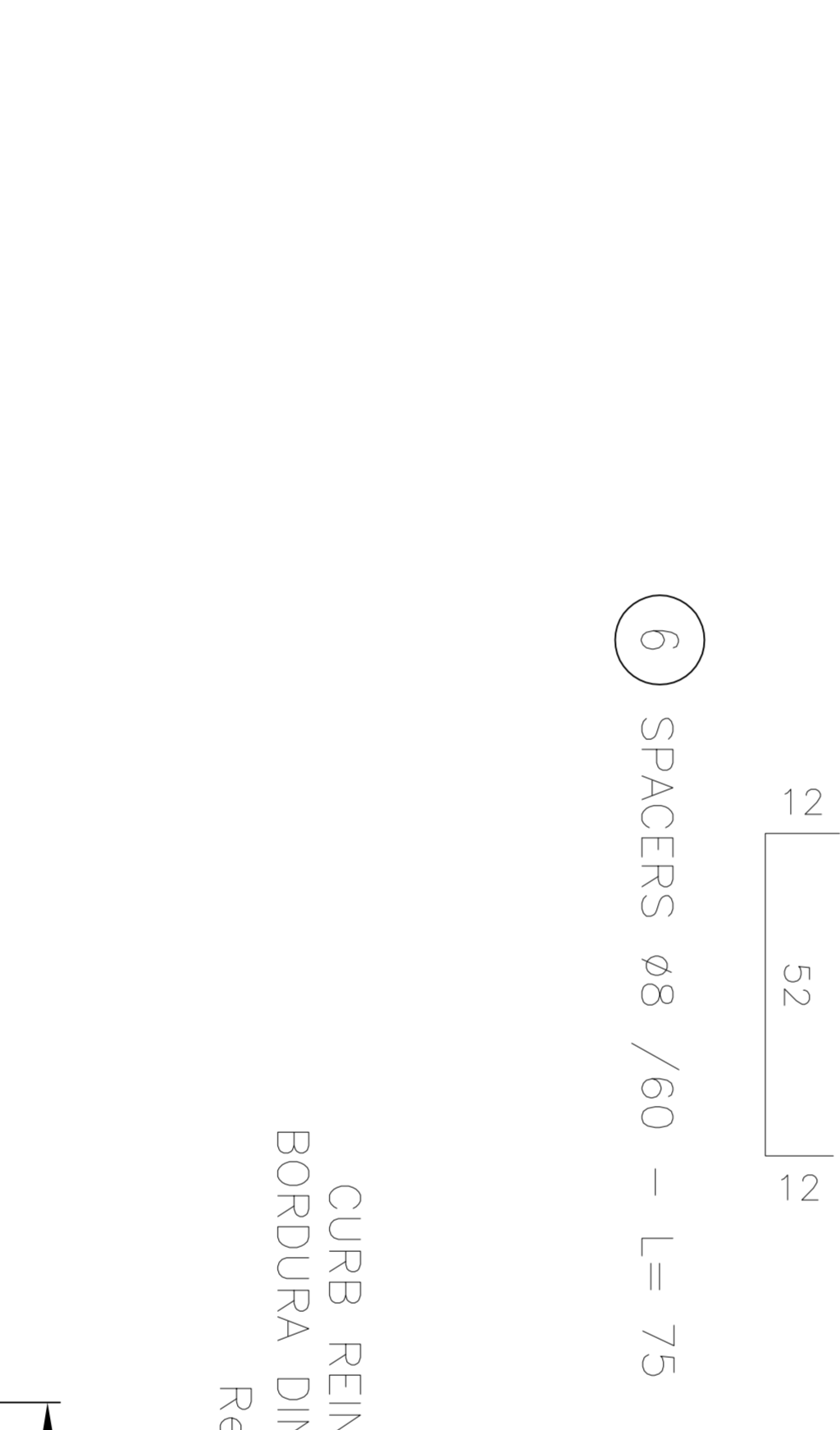
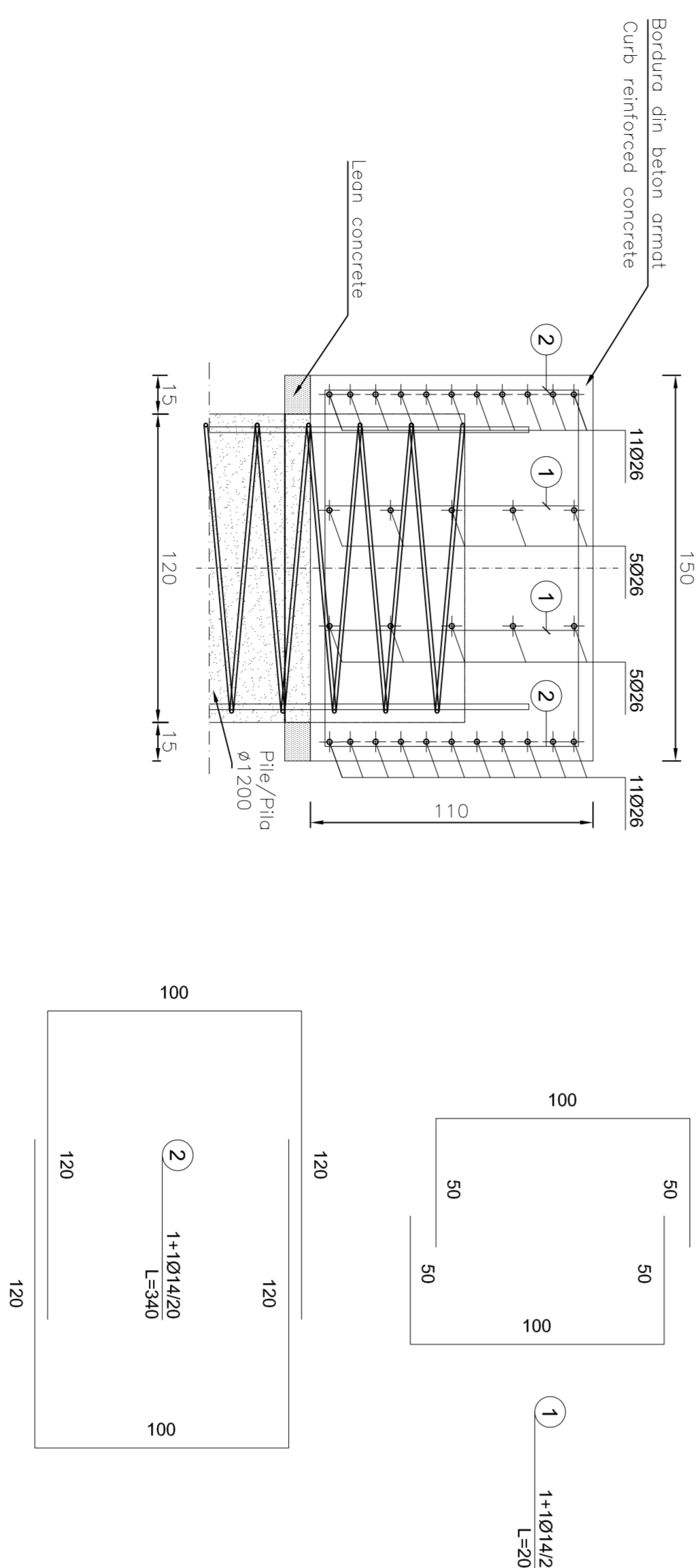


STEELS TABLE	
REINFORCING STEEL: - B40C (molded) Bending diameter R_{br} : ϕ Bar < 20 -> $R_{br} = 6\phi$ ϕ Bar 20-26 -> $R_{br} = 6\phi$	Legend measures:
MATERIAL TABLE	
CONCRETE CLASS	
- Type C20/25 MPa - $f_{ck} = 20$ MPa - $f_{ctm} = 2.36$ MPa - Minimum axial load $N_{min} = 0.005 N_d$ - Minimum axial load $N_{min} = 0.005 N_d$ - Concrete type C20 II/V - ρ max aggregate = 22.4 mm	
REINFORCING STEEL	
- B40C certified by endorsement - Moldable - Type I - $f_{ck} = 2-12$ MPa - Cement type CEM I/V	

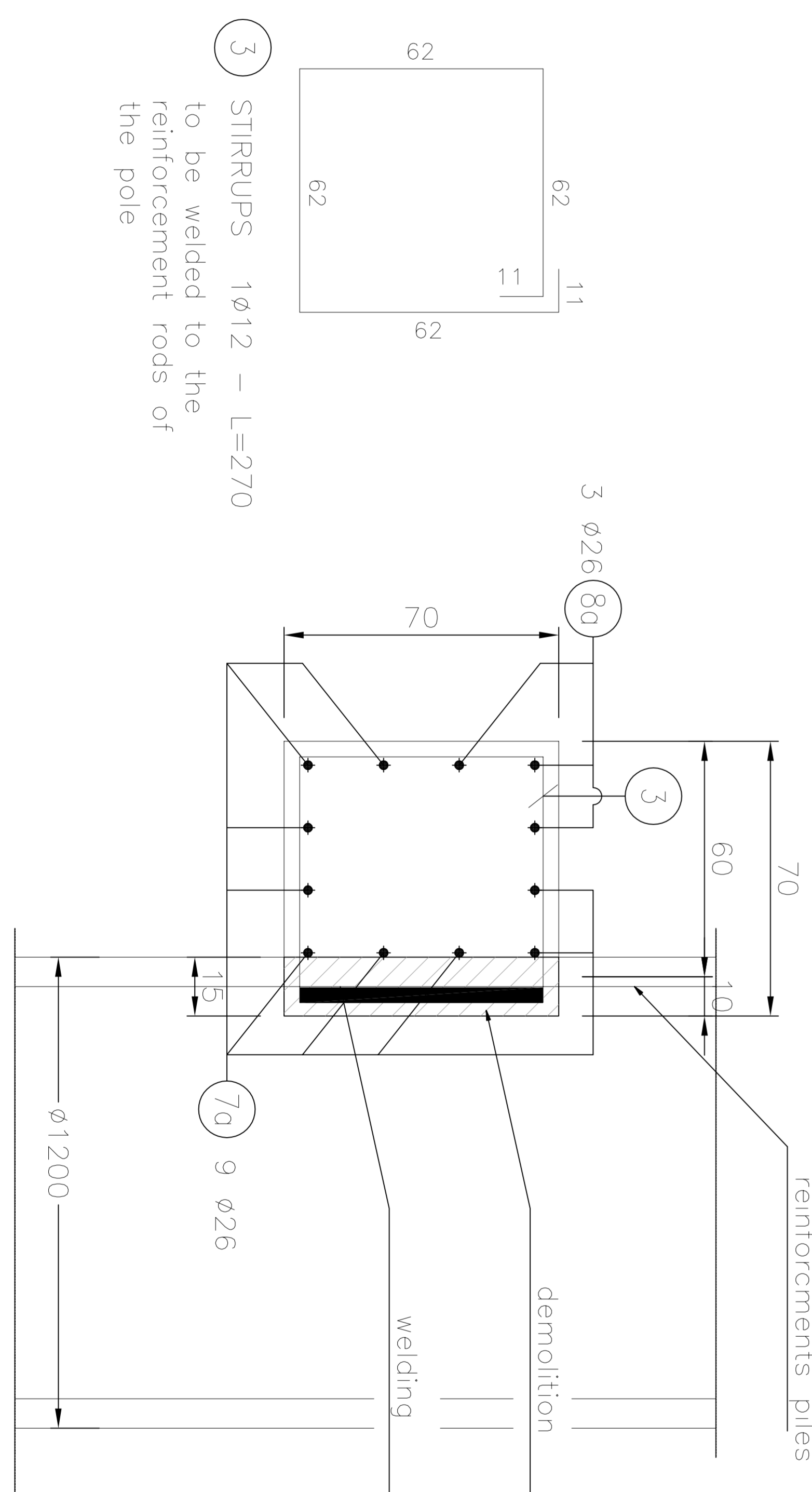
CURB REINFORCED CONCRETE - TYPICAL SECTION
 BORDURA DIN BETON ARMAT - SECTIUNI TIP
 Reinforcements/Armături
 Scale/Scale 1:10



CURB REINFORCED CONCRETE -TYPE 1
 BORDURA DIN BETON ARMAT-TIP 1
 Reinforcements/Armături
 Scale/Scale 1:20



CURB REINFORCED CONCRETE ON PILES
 BORDURA DIN BETON ARMAT DEASUPRA PILA
 Reinforcements/Armături
 Scale/Scale 1:10



CLIENT / CLIENT		C.N.C.F. "C.F.R." - S.A.	
CONSULTANT / CONSULTANT		TECNIC Consulting Engineers	
SUBCONSULTANT / SUBCONSULTANT			
<p>Rehabilitation of the railway line Bistrita - Sibiu, component part of the IV Pan European, pentru dezvoltarea trenurilor cu viteză mare de 160 km/h. Partea din proiect cuprinde: Secțiunea 1 Bistrita - Sibiu (ca. 100 km).</p> <p>Demnitate desen / Drawing Title : MURENI TUNNEL</p> <p>Proiect/Project : Z04/R02/16/27/2002 Fașa / Phase : P.1h. / 1.D.</p>			
<p>Scale / Scară : 1:10</p> <p>Scale / Scară : 1:10</p>		<p>Scale / Scară : 1:10</p> <p>Scale / Scară : 1:10</p>	