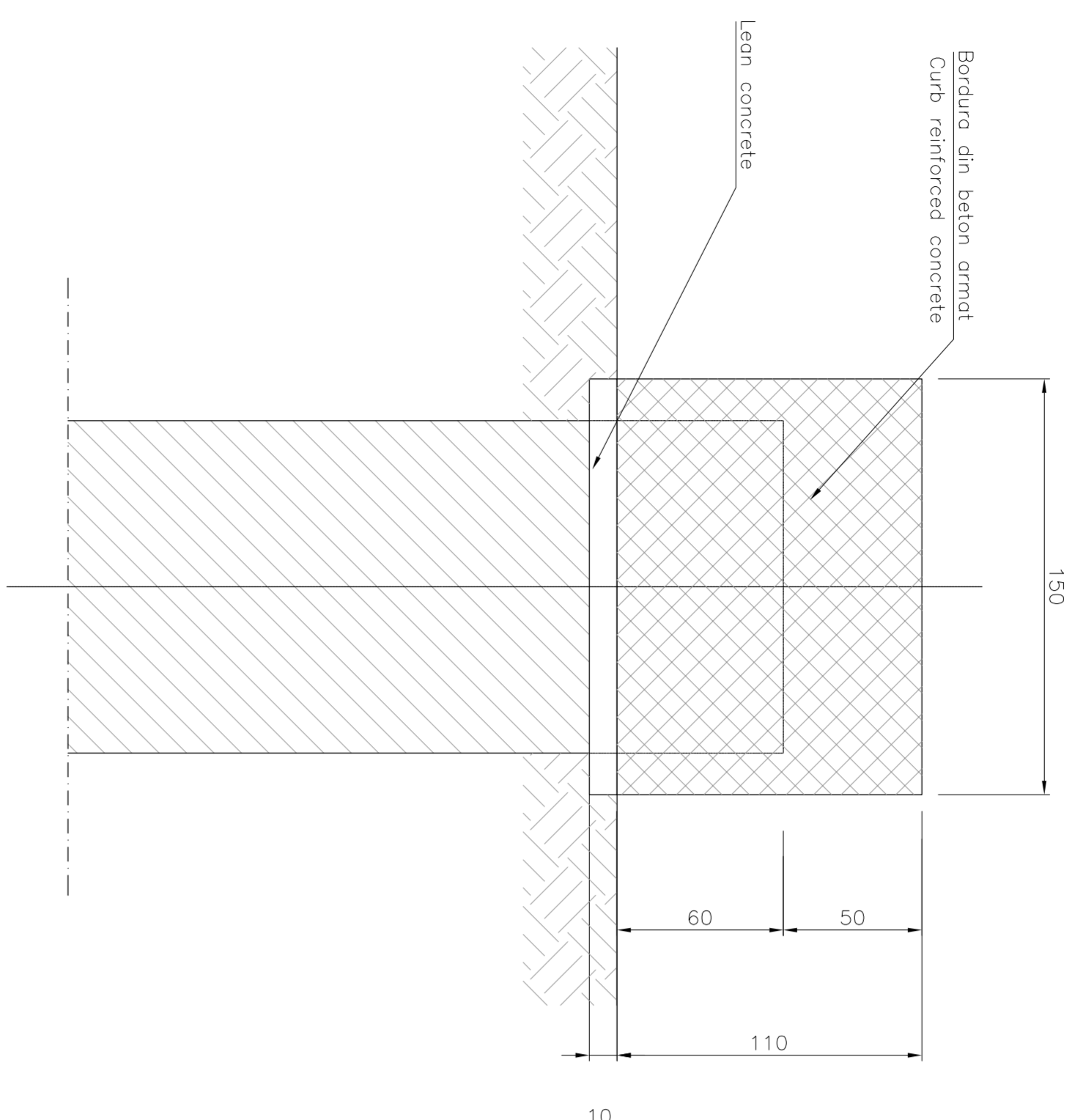
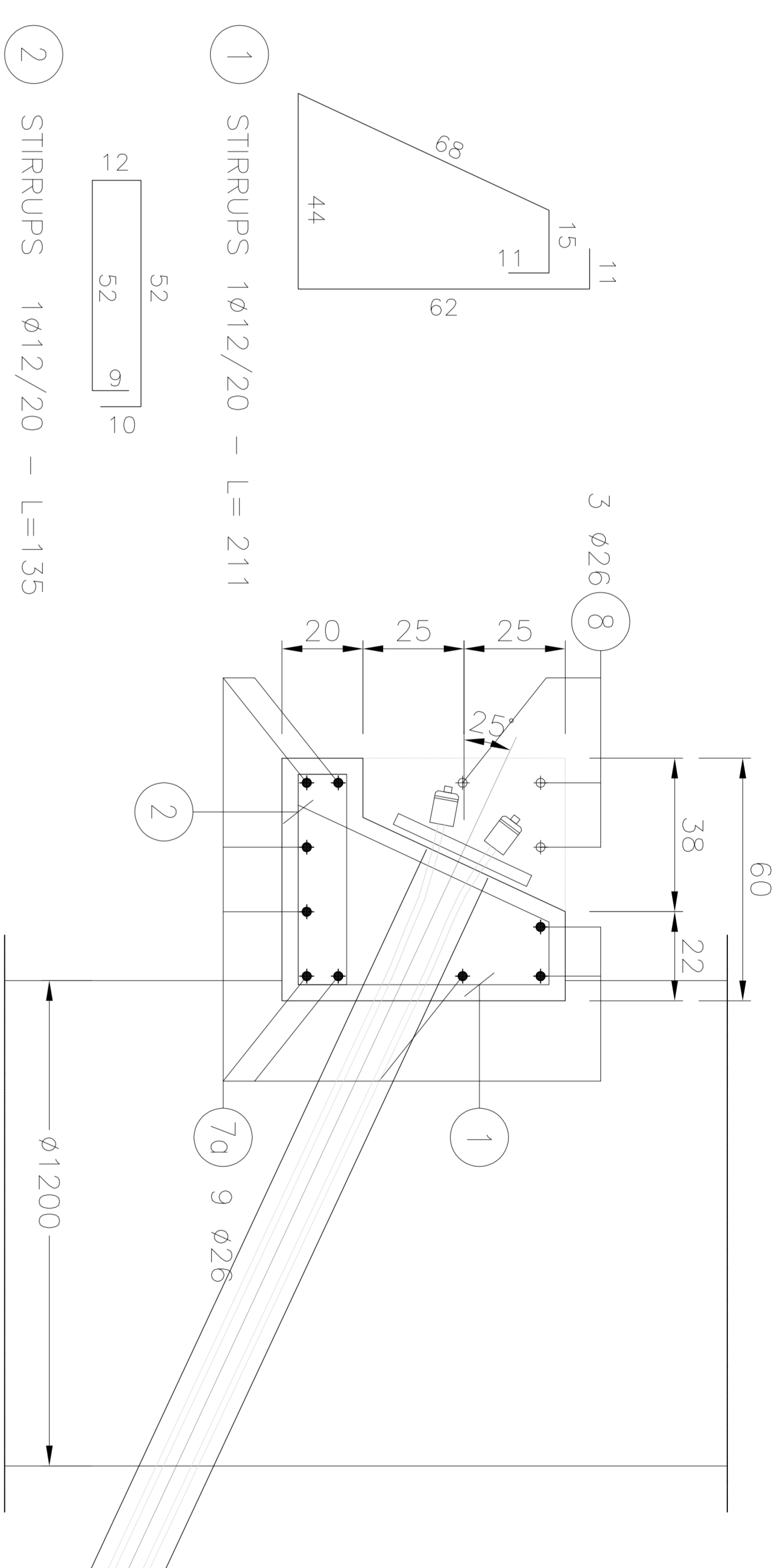


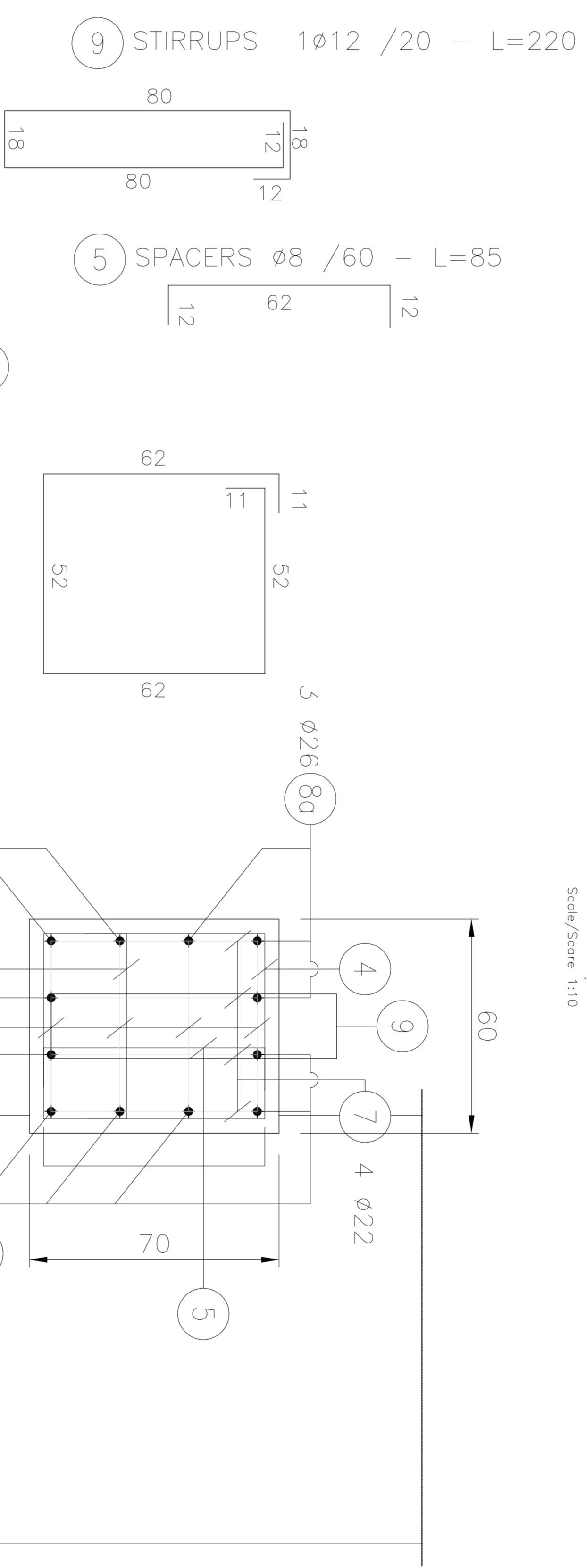
CURB REINFORCED CONCRETE
BORDURA DIN BETON ARMAT
Formworks/Cofraje
Scale/Scale 1:20



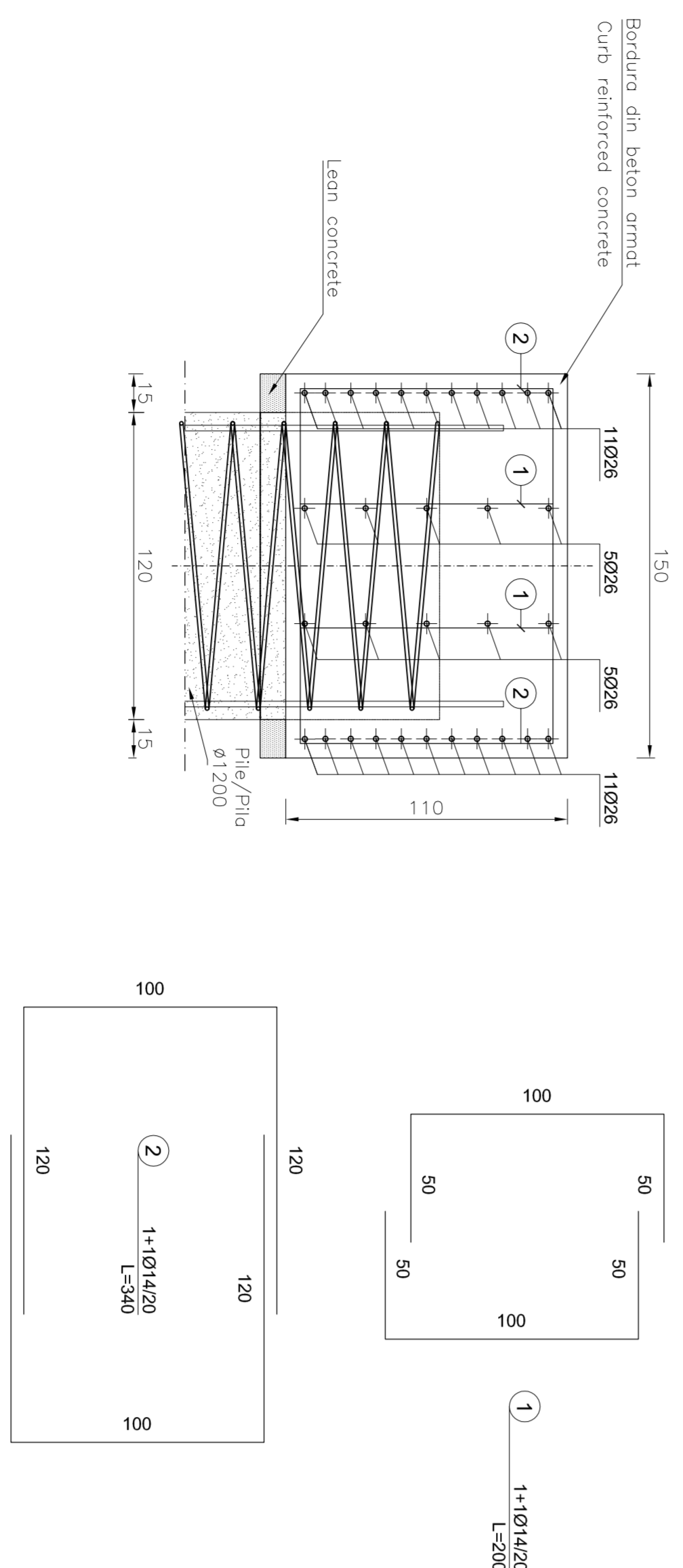
CURB REINFORCED CONCRETE WITH TENDONS-TYPE 2
BORDURA DIN BETON ARMAT CU FRANGHIE-TIP 2
Reinforcements/Armături
Scale/Scale 1:10



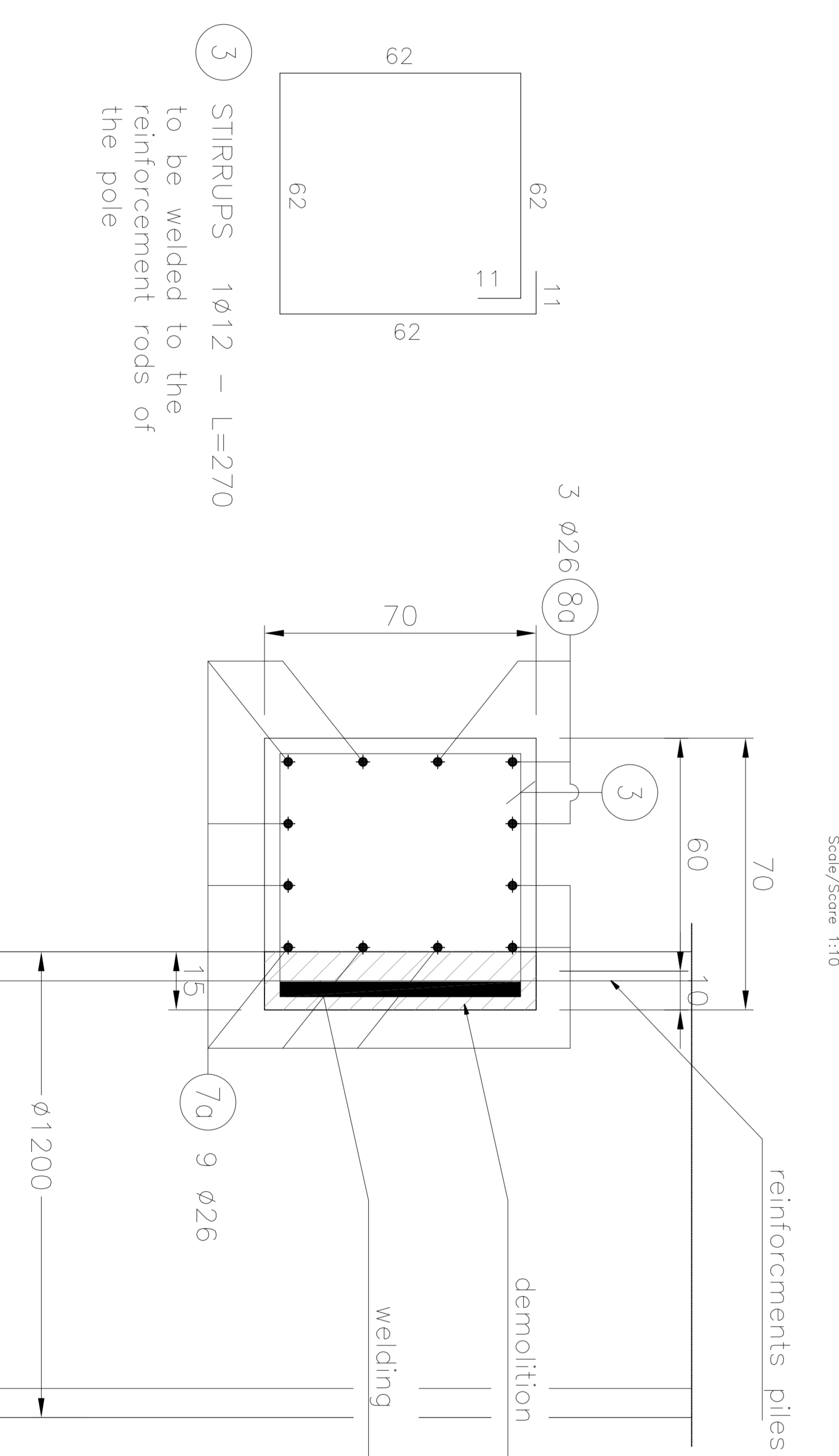
CURB REINFORCED CONCRETE – TYPICAL SECTION
BORDURA DIN BETON ARMAT – SECTIUNI TIP
Reinforcements/Armături
Scale/Scale 1:10



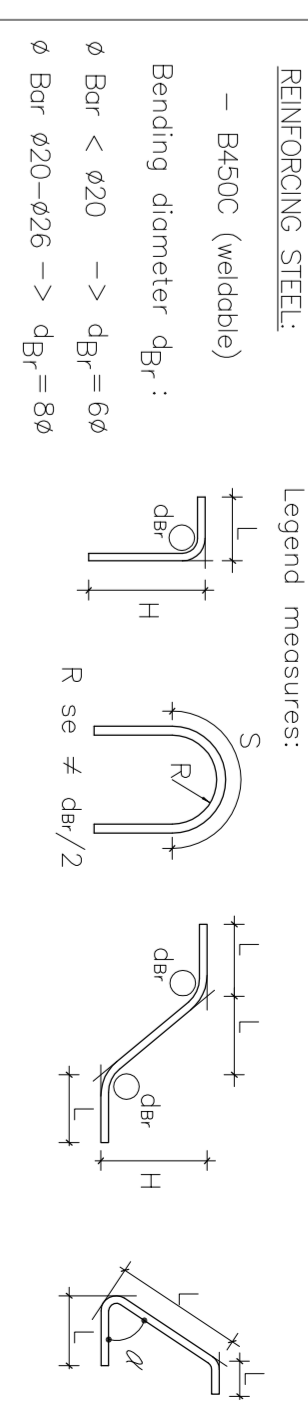
CURB REINFORCED CONCRETE –TYPE 1
BORDURA DIN BETON ARMAT-TIP 1
Reinforcements/Armături
Scale/Scale 1:20



CURB REINFORCED CONCRETE ON PILES
BORDURA DIN BETON ARMAT DEASUPRA PILA
Reinforcements/Armături
Scale/Scale 1:10



STEELS TABLE



REINFORCING STEEL

- B60C (wedded)
- Bending diameter R_g :
- ϕ Bar <math>< 400 \rightarrow $R_g = 6\phi$
- ϕ Bar <math>400-408 \rightarrow $R_g = 8\phi$

LEGGED MEASURES:

CONCRETE PILE

- Type H2
- $f_{tdk} > 25$ MPa
- $f_{tdk} < 25$ MPa
- Minimum structural class S4/S5
- Concrete type C24 m3/V
- ϕ max. aggregate = 22.4 mm

CONCRETE CURB

- Type H2
- $f_{tdk} > 25$ MPa
- $f_{tdk} < 25$ MPa
- Minimum structural class S4/S5
- Concrete type C24 m3/V
- ϕ max. aggregate = 22.4 mm

REINFORCING STEEL

- B60C controlled by establishment
- Wedded

LEAN CONCRETE

- Type 1
- $f_{tdk} > 12$ MPa
- Concrete type C24 m3/V

0	1	2	3	4	5	6	7	8	9	10	11	12	13	14	15	16	17	18	19	20	21	22	23	24	25	26	27	28	29	30	31	32	33	34	35	36	37	38	39	40	41	42	43	44	45	46	47	48	49	50
---	---	---	---	---	---	---	---	---	---	----	----	----	----	----	----	----	----	----	----	----	----	----	----	----	----	----	----	----	----	----	----	----	----	----	----	----	----	----	----	----	----	----	----	----	----	----	----	----	----	----

CLIENT / CLIENT

CONSULTANT / CONSULTANT

SUBCONSULTANT / SUBCONSULTANT

PROJECT FINANȚAT DE UNIUNEA EUROPEANĂ
EUROPEAN UNION FINANCED PROJECT

PROIECT/PROJECT
Z044R02/16/27/2002
P.1.N./1.D.

CN.C.F. "C.F.R." - S.A.

OBERMEYER
Consulting Engineers

TECNIC

ENTRANCE TUNNEL

Scale / Scala

LOT

Nr. / No