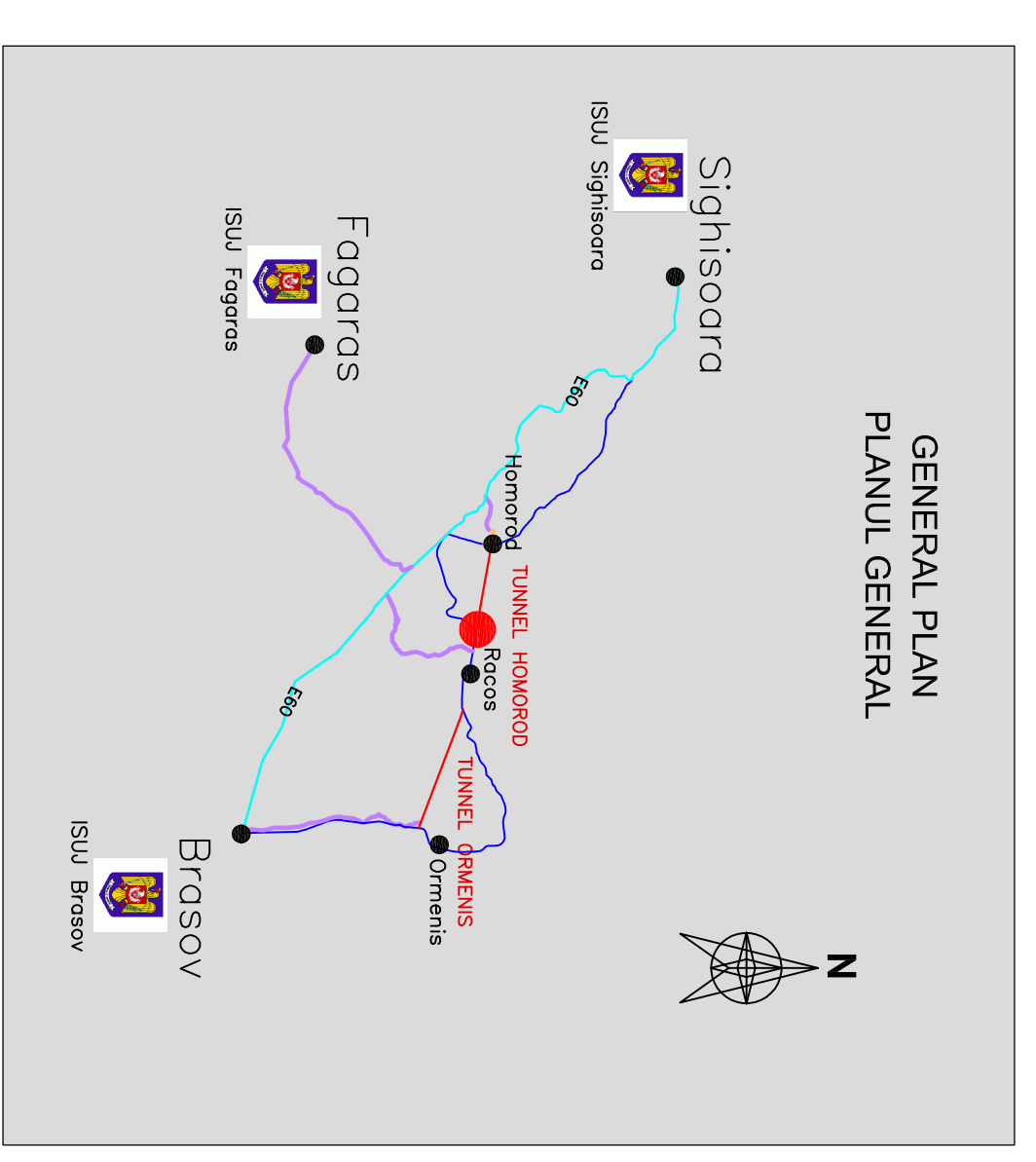


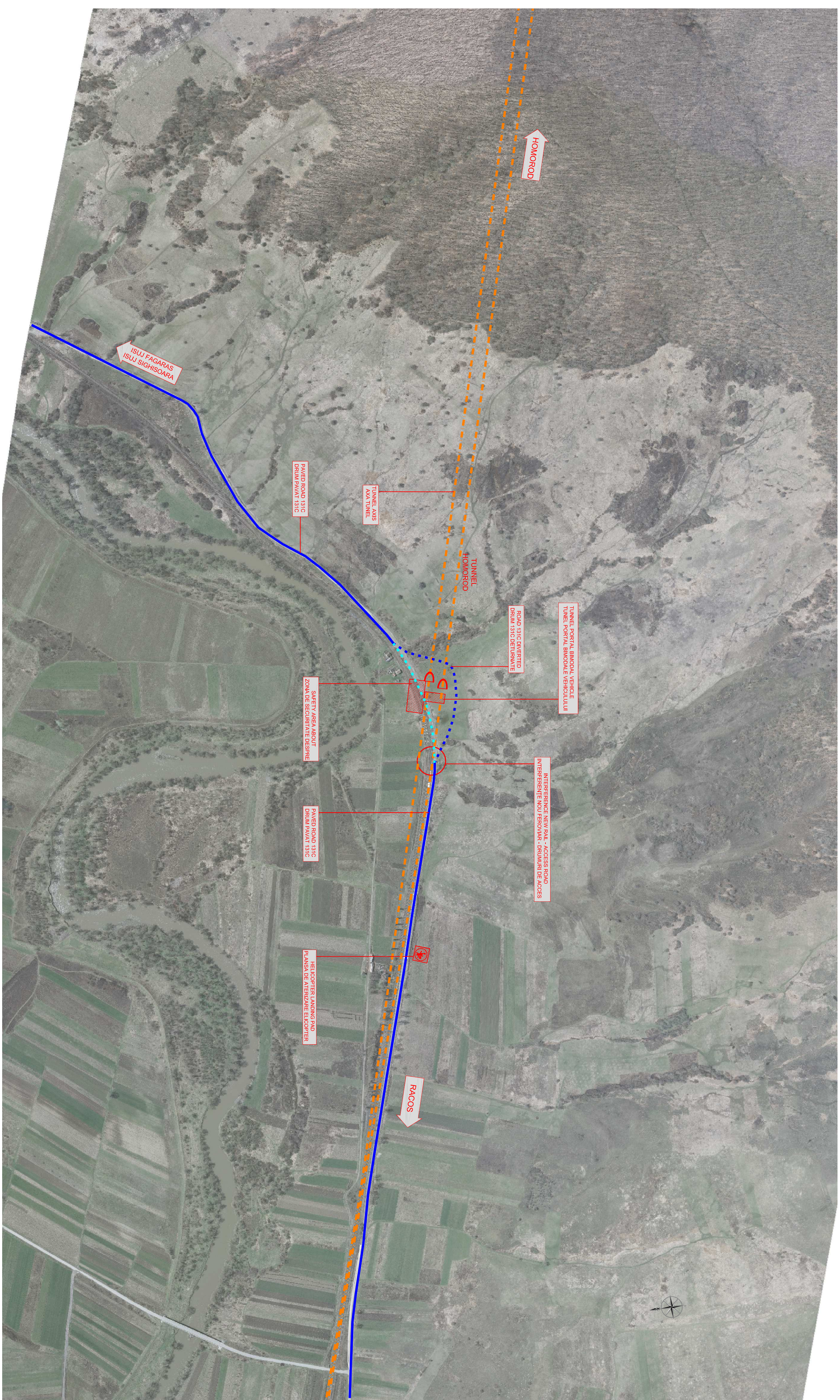
GENERAL PLAN  
PLANUL GENERAL



SUMMARY OF ACCESSIBILITY SIDE TUNNEL HOMOROD  
REZUMAT AL ACCESIBILITATE TUNEL HOMOROD ZONA  
INSPRE RACOOS

- 1) HYPOTHESIS (~65.5 km distance from the detachment of Sighisoara ISUJ)  
--7.5 km of 131C road until connection with E60  
--58 km distance from the detachment of Sighisoara ISUJ
- 2) HYPOTHESIS (~50.5 km distance from the detachment of Fagaras ISUJ)  
--8 km of 131C road  
--3.5 km of E60 road  
--39 km of 1J road
- 3) HYPOTHESIS (~53.8 km distance from the detachment of Fagaras ISUJ)  
--1.30 km of 131C road  
--10 km of 131D road  
--3.5 km of E60 road  
--39 km of 1J road
- 4) HYPOTHESIS (Surgery by train from the rescue station Racoos)  
--5 km of railway

NOTE:  
Entrance drawn on the track received 20/4/2011



Index	Date	Modification	Projectant	Approved Consultant	Approved CFR
A			Designer	Approved Consultant	Approved CFR
B					
C					
D					

GUVERNUL ROMANIEI  
ROMANIAN GOVERNMENT  
PROIECT FINANAT DE UNIUNEA EUROPEANA  
EUROPEAN UNION FINANCED PROJECT

CFR  
C.N.C.F. "C.F.R." - S.A.

ITALTECH  
SCOTT WILSON  
OBERMEYER  
PALEN BERVEN GMBH  
TECNIC  
Consulting Engineers

CONSULTANT / CONSULTANT		SEMANTURA	
Approved	Project manager	R. Lizza	Signature
Approved	Co-ordinator Section 1	C. Gambelli	
Verified	Tunnel Expert	C. Gambelli	
Checked	Tunnel Expert	C. Gambelli	
Initiated	Projectant	C. Gambelli	
Elaborated	Designer	C. Gambelli	

SUBCONSULTANT / SUBCONSULTANT		SEMANTURA	
Approved	Responsabil Subconsultant		
Approved	Subconsultant Responsable		
Initiated	Projectant		
Elaborated	Designer		

Realizarea liniei de cale ferata Brasov - Simeria parte componentă a coridorului IV Pan European, parte componentă a coridorului Simeria - Sighisoara  
Sectiune I Brasov - Sighisoara  
Rehabilitation of the railway line Brasov - Simeria, component Part of the IV Pan-European Corridor, for the trains circulation with maximum speed of 160 km/h.  
Section I Brasov - Sighisoara

Denuntie desen / Drawing Title:  
TUNEL HOMOROD / TUNEL HOMOROD  
RACOOS ENTRANCE - ACCESS ROADS  
ZONA INSPRE RACOOS - DRUMURI DE ACCES

Codificare / Codification System	Scara / Scale	LOT	Nr. / Nb
E A S 1	0 1	C	1 2
T S	G N	0 2	0
0	0	0	0
0	0	0	0