



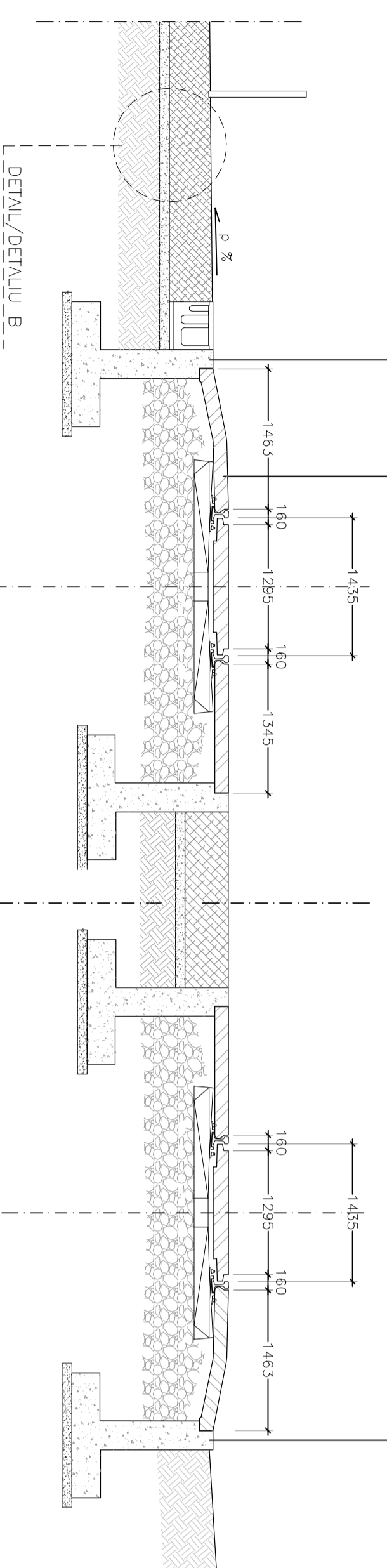
PLAN  
Scale/Scara 1:1000

TUNNEL PORTAL BIMODAL VEHICLE / TUNEL PORTAL BIMODALE VEHICULULUI  
DETAIL/DETALIU "A"

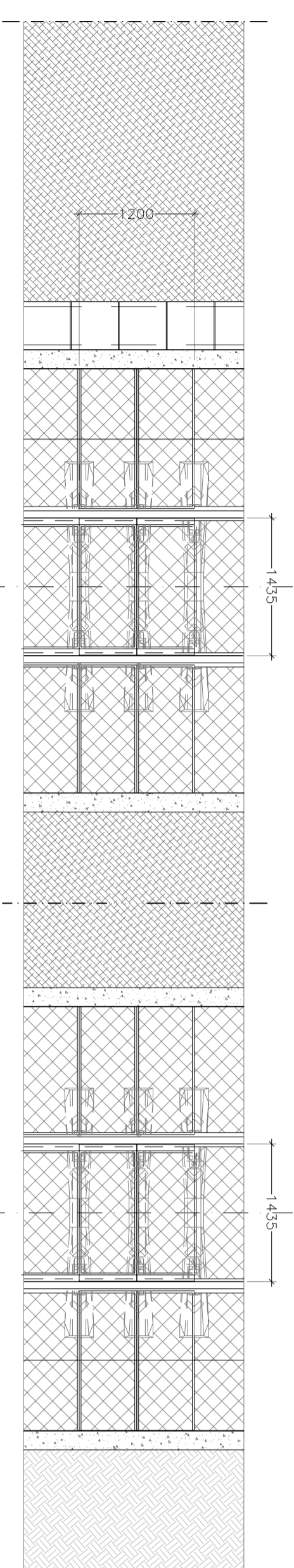
CONCRETE CURB BALLAST  
STOPA BETON BALLAST  
Rck >= 25 N/mm<sup>2</sup>  
F<sub>88</sub> 44K 45 kg/m<sup>3</sup>

PREFABRICATED CONCRETE SLABS  
PLACI DE BETON PREFABRICATE  
Rck >= 35 N/mm<sup>2</sup>  
F<sub>88</sub> 44K

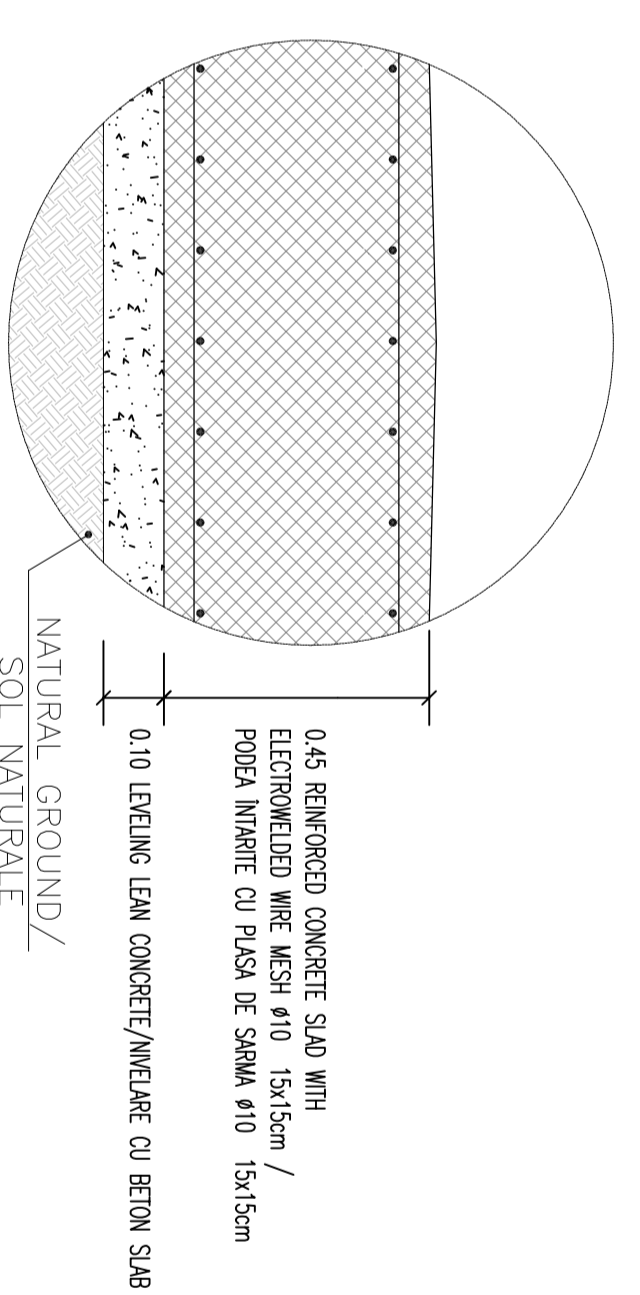
CONCRETE CURB BALLAST  
STOPA BETON BALLAST  
Rck >= 25 N/mm<sup>2</sup>  
F<sub>88</sub> 44K 45 kg/m<sup>3</sup>



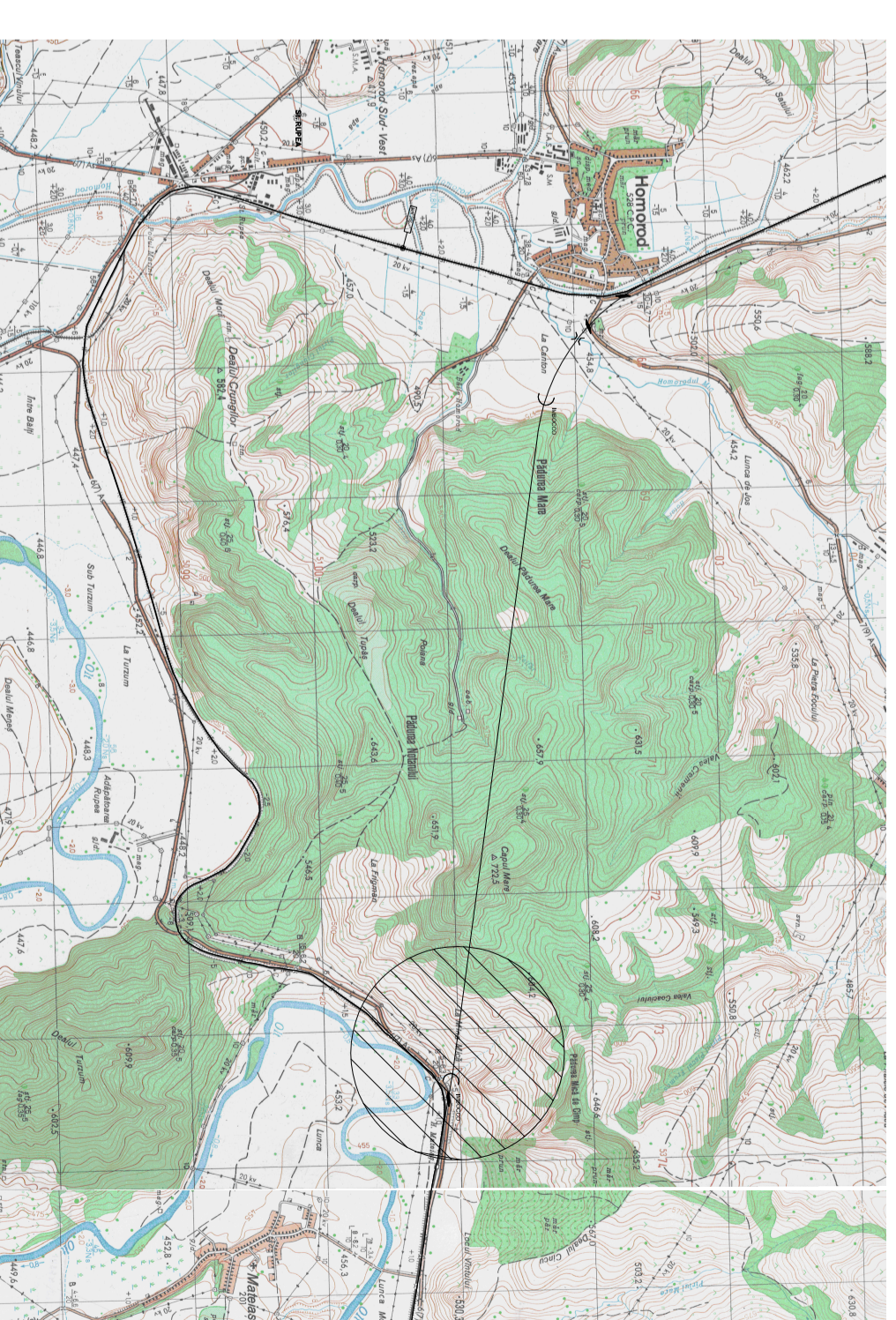
PLAN  
Scale/Scara 1:300





DETAIL/DETALIU "B"



GENERAL PLAN / PLANUL GENERAL



D						
C						
B						
A						
Index	Date	Modificari Modification/Revision	Proiectant Designer	Approbat Consultant Approved Consultant	Approbat CFR Approved CFR	
 <b>GUVERNUL ROMANIEI</b> ROMANIAN GOVERNMENT  <b>PROIECT FINANȚAT DE UNIUNEA EUROPEANA</b> EUROPEAN UNION FINANCED PROJECT						

CLIENT / CLIENT  
 **C.N.C.F. "C.F.R." - S.A.**

CONSULTANT / CONSULTANT		SUBCONSULTANT / SUBCONSULTANT	
Approbat Approved	Șef proiect Project manager	Approbat Approved	Responsabil Subconsultant Subconsultant Responsible
Verificat Checked	Coordonator Section 1 Coordinator	Verificat Checked	Proiectant Designer
Elaborat Elaborated	Tunel Expert Tunnel Expert	Elaborat Elaborated	
	Proiectant Designer		

Redactarea liniei de cale ferată Brașov - Simeria parte componentă a coridorului IV Pan European, până la distanța de 100 km/h.  
Section 1 Brașov - Sighisara

Rehabilitation of the railway line Brașov - Simeria, component Part of the IV Pan-European Corridor, for the trains circulation with maximum speed of 160 km/h.  
Section 1 Brașov - Sighisara

Denumire desen / Drawing Title:  
**TUNNEL HOMOROD / TUNEL HOMOROD**  
RACOS ENTRANCE - PLAN  
ZONA INSPRE RACOS - PLAN

Codificare / Codification System		Scara / Scale		Variet / Variants		LOT		Nr. / No										
E	A	1	0	1	C	1	2	T	S	G	N	0	2	0	0	0	6	0