

SUMMARY OF ACCESSIBILITY SIDE TUNNEL ORMEINIS RACOOS ENTRANCE TUNEL ORMEINIS ZONA INSPRE RACOOS

1-HYPOTHESIS (~56,6km distance from the detachment of Fagaras ISUJ)

- 0,2 km of new road
- 5,2 km of unpaved road to adapt
- 9,7 km of 131D road
- 2,5 km of E60 road
- 39 km of 1J road

2-HYPOTHESIS (~61,2 km distance from the detachment of Fagaras ISUJ)

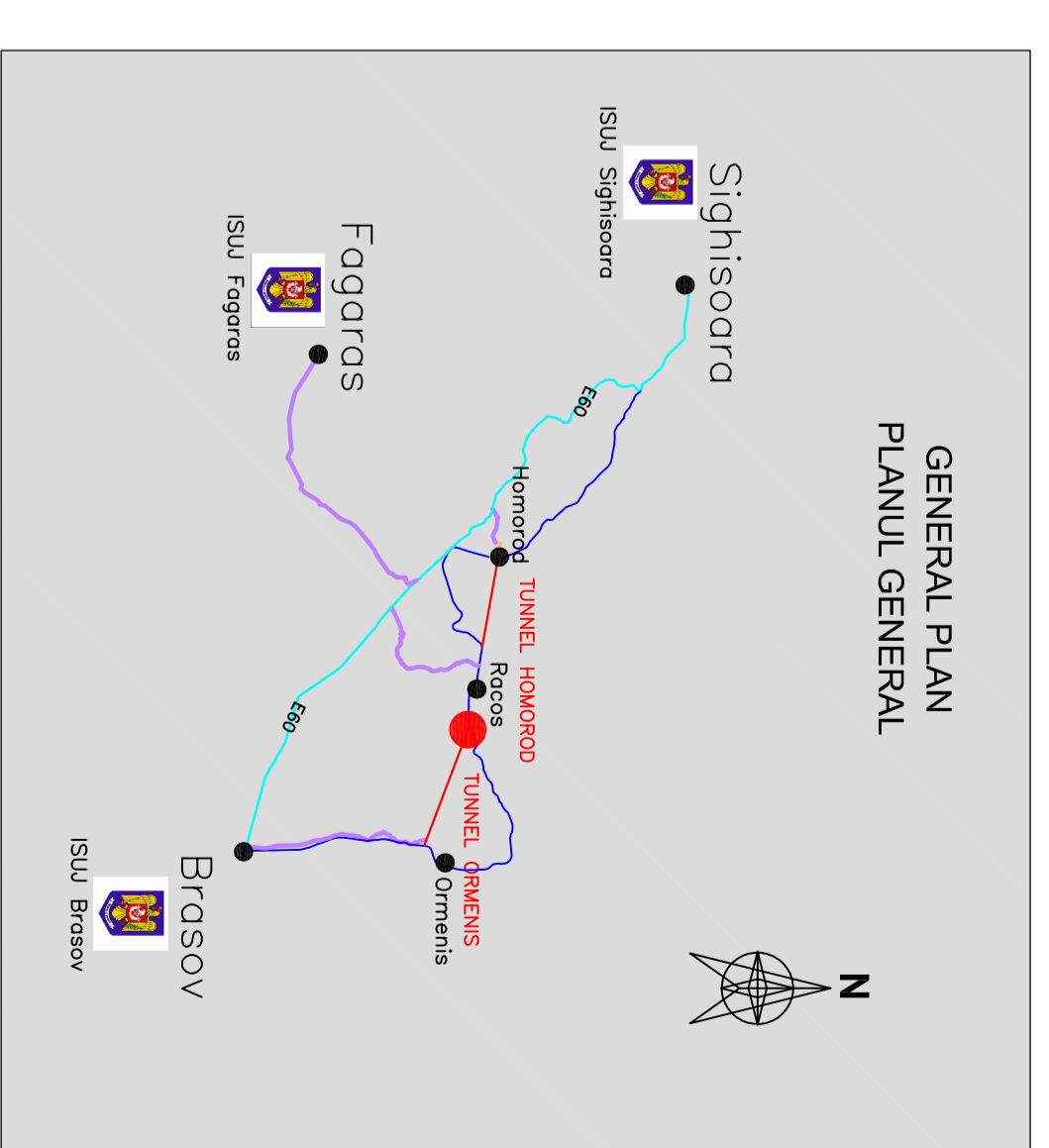
- 0,2 km of new road
- 5,2 km of unpaved road to adapt
- 6 km of 131D road
- 8,8 km of 131C road
- 2 km of E60 road
- 39 km of 1J road

3-HYPOTHESIS (Surgery by train from the rescue station Racoos)

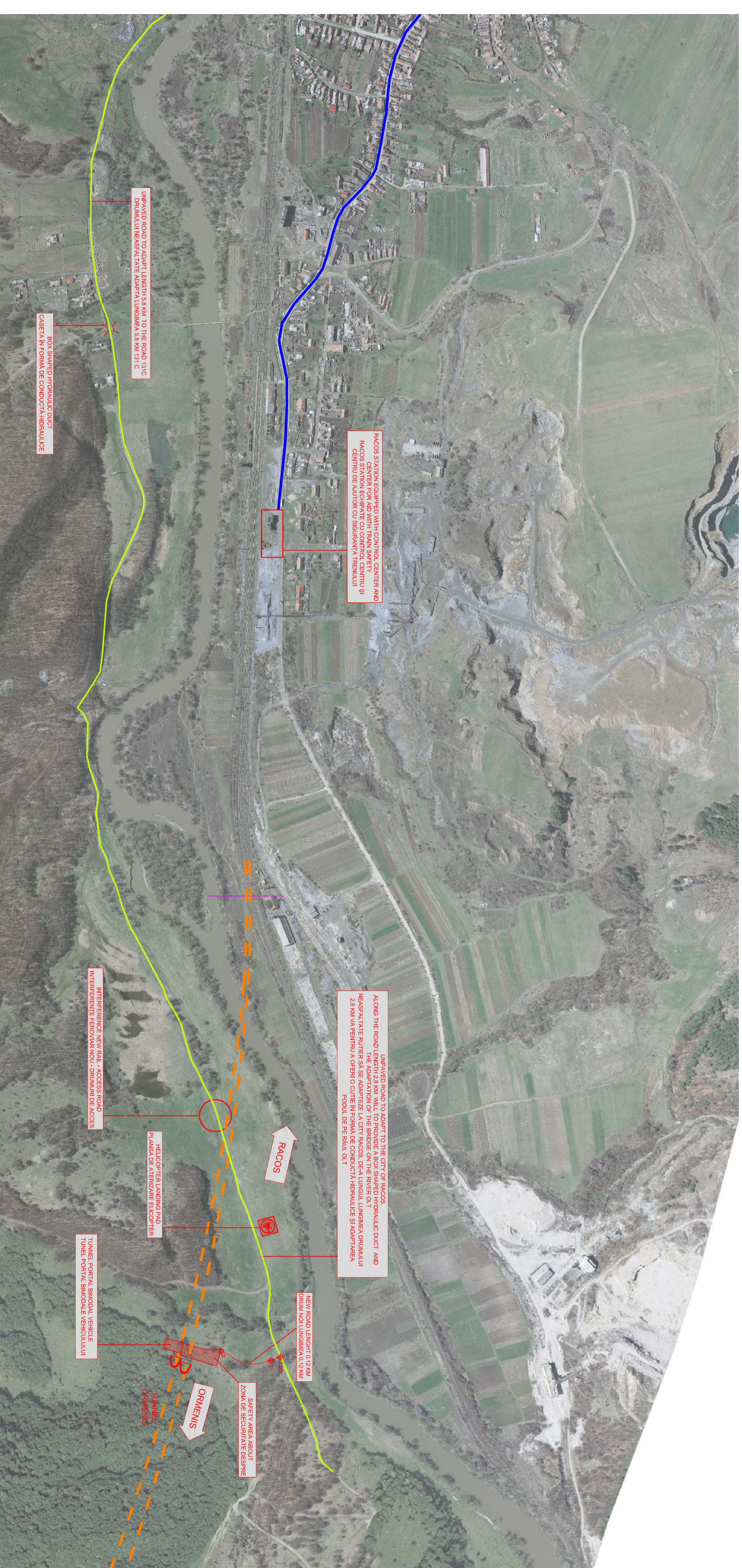
- 2 km of railway

4-HYPOTHESIS (~75,4 km distance from the detachment of Sighisoara ISUJ)

- 0,2 km of new road
- 5,2 km of unpaved road to adapt
- 6 km of 131D road
- 8,8 km of 131C road
- 58 km of E60 road



TUNEL ORMEINIS - RACOOS ENTRANCE / TUNEL ORMEINIS ZONA INSPRE RACOOS



D					
C					
B					
A					
Index	Date	Modification	Projectant	Approved Consultant	Approved CFR
		Modification/Revision	Designer	Approved Consultant	Approved CFR

GUVERNUL ROMANIEI
ROMANIAN GOVERNMENT

PROIECT FINANȚAT DE UNIUNEA EUROPEANA
EUROPEAN UNION FINANCED PROJECT

CLIENT / CLIENT
CFR
C.N.C.F. "C.F.R." - S.A.

CONSULTANT / CONSULTANT

Approved	Self project	R. Luzzi	Semnatura
Approved	Project manager		Signature
Approved	Chief Designer	C.Gambelli	
Approved	Section 1 Coordinator		
Verified	Tunnel Expert	C. Gambelli	
Checked	Tunnel Expert		
Immocti	Projectant	C.Gambelli	
Elaborator	Designer		

SUBCONSULTANT / SUBCONSULTANT

Approved	Responsabil Subconsultant		
Approved	Subconsultant Responsible		
Immocti	Projectant		
Elaborator	Designer		

Realizarea liniei de cale ferata Brasov - Simeria parte componentă a coridorului IV Pan-European, măsura de 160 km.
Section 1 Brasov - Sighisoara

Rehabilitation of the railway line Brasov - Simeria, component Part of the IV Pan-European Corridor, for the trains circulation with maximum speed of 160 km/h.
Section 1 Brasov - Sighisoara

Denuntie desen / Drawing Title:
TUNEL ORMEINIS / TUNEL ORMEINIS
RACOOS ENTRANCE - ACCESS ROADS
ZONA INSPRE RACOOS - DRUMURI DE ACCES

Codificare / Codification System

E	A	S	1	0	1	C	1	0	T	S	G	N	0	1	0	0	0	5	0
---	---	---	---	---	---	---	---	---	---	---	---	---	---	---	---	---	---	---	---

Scara / Scale

LOT	Nr. / Nb
-----	----------