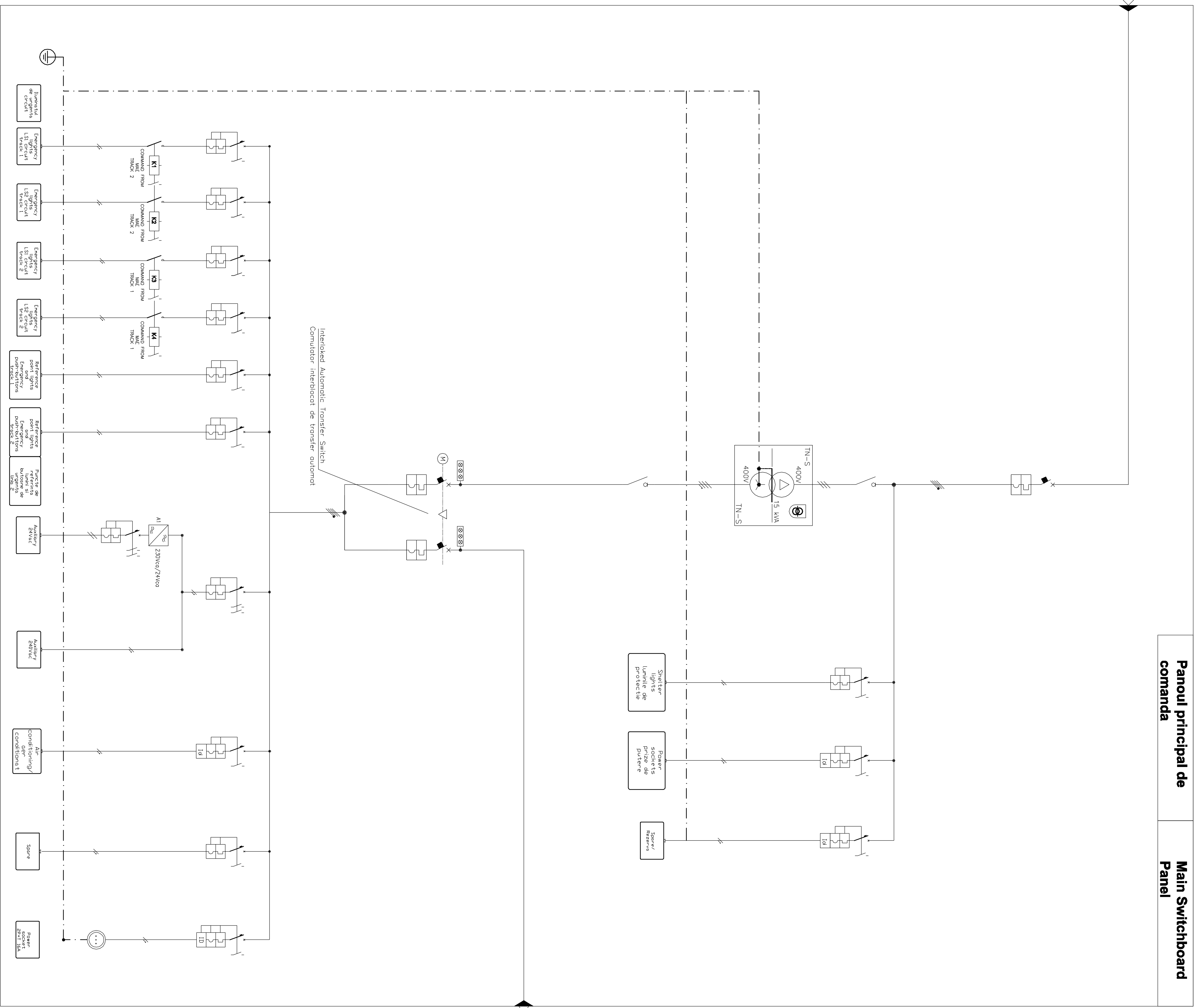
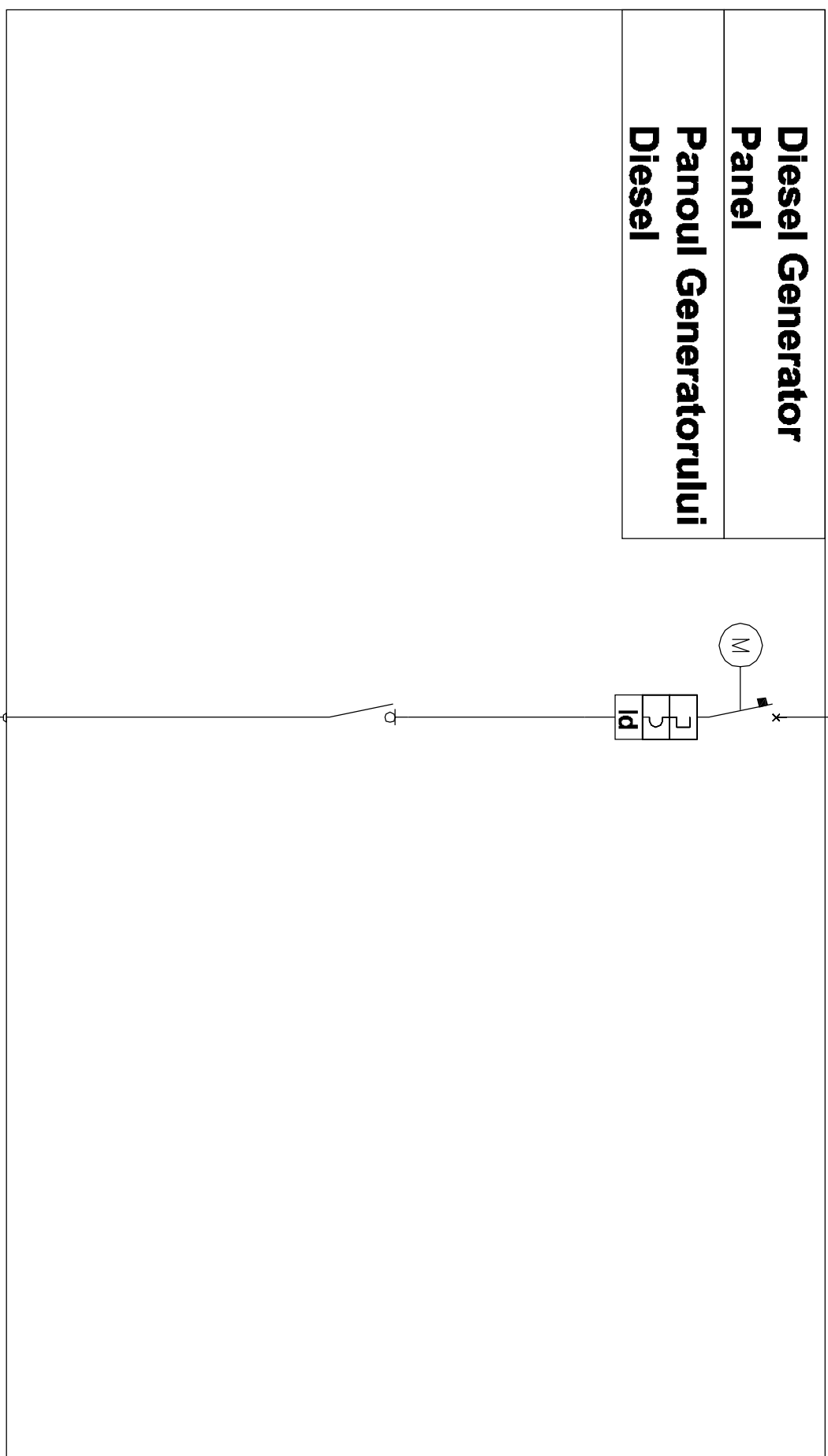


Forma sau utilizare ulterioară sunt interzise!
De la început de proiectare de proiect tehnologic
Introducere în proiectare de proiect tehnologic
Data: 15.12.2011
Proiectant: M. Castellani




Panoul principal de comanda Main Switchboard



D					
C					
B					
A					
Index	Data	Modificare / Revision	Proiectant / Designer	Aprobat Consultant / Approved Consultant	Aprobat CFR / Approved CFR


GUVERNUL ROMANIEI
ROMANIAN GOVERNMENT


PROIECT FINANȚAT DE UNIUNEA EUROPEANĂ
EUROPEAN UNION FINANCED PROJECT

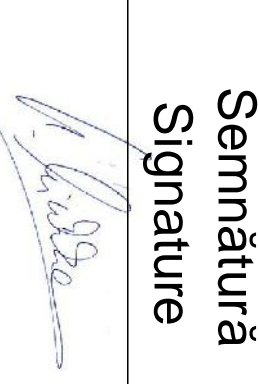

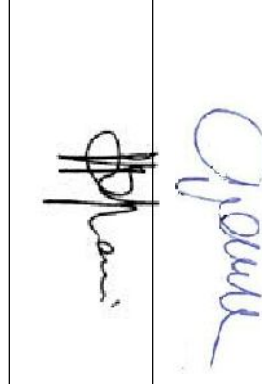

C.N.C.F. "C.F.R." - S.A.




GRUPPO FERROVIE DELLO STATO
Joint Venture leader




PLANEN + BERATEN GmbH


Consulting Engineers

CONSULTANT / CONSULTANT		Date	Semnătură / Signature
Aprobat / Approved	Self proiect / Project manager	19-12-2011	
Aprobat / Approved	Coordonator Sectiune 1 / Section 1 Coordinator	19-12-2011	
Verificat / Checked	Expert Cheie / Key Expert	15-12-2011	

Aprobat / Approved	Coordonator cu alimentarea de energie de joasa sau medie tensiune / Medium/Low Voltage Power Supply Coordinator	M. Castellani	15-12-2011	
Intocmit / Elaborated	Proiectant / Designer	M. Schembari	15-12-2011	

Reabilitarea liniei de cale ferata Braşov - Simeria, parte componentă a coridorului IV Pan European, pentru circulația trenurilor cu viteză maximă de 160 km/h,
Tronsoanel 1 : Brasov-Sighisoara
Rehabilitation of the railway line Braşov - Simeria, component Part of the IV Pan-European Corridor, for the trains circulation with maximum speed of 160 km/h,
Section 1 : Brasov-Sighisoara

Denumire desen / Drawing Title :
Beia Tunnel Emergency Lighting: Main switchboard single line diagram
Iluminatul de urgenta al tunelului Beia: Diagrama pe singura linie a Panoului principal

Codificare / Codification System
 Scara / Scale: --/--

Beia Tunnel Emergency Lighting: Main switchboard single line diagram
Iluminatul de urgenta al tunelului Beia: Diagrama pe singura linie a Panoului principal

EA5101C14UXEG0010
 Nr./No 01/01