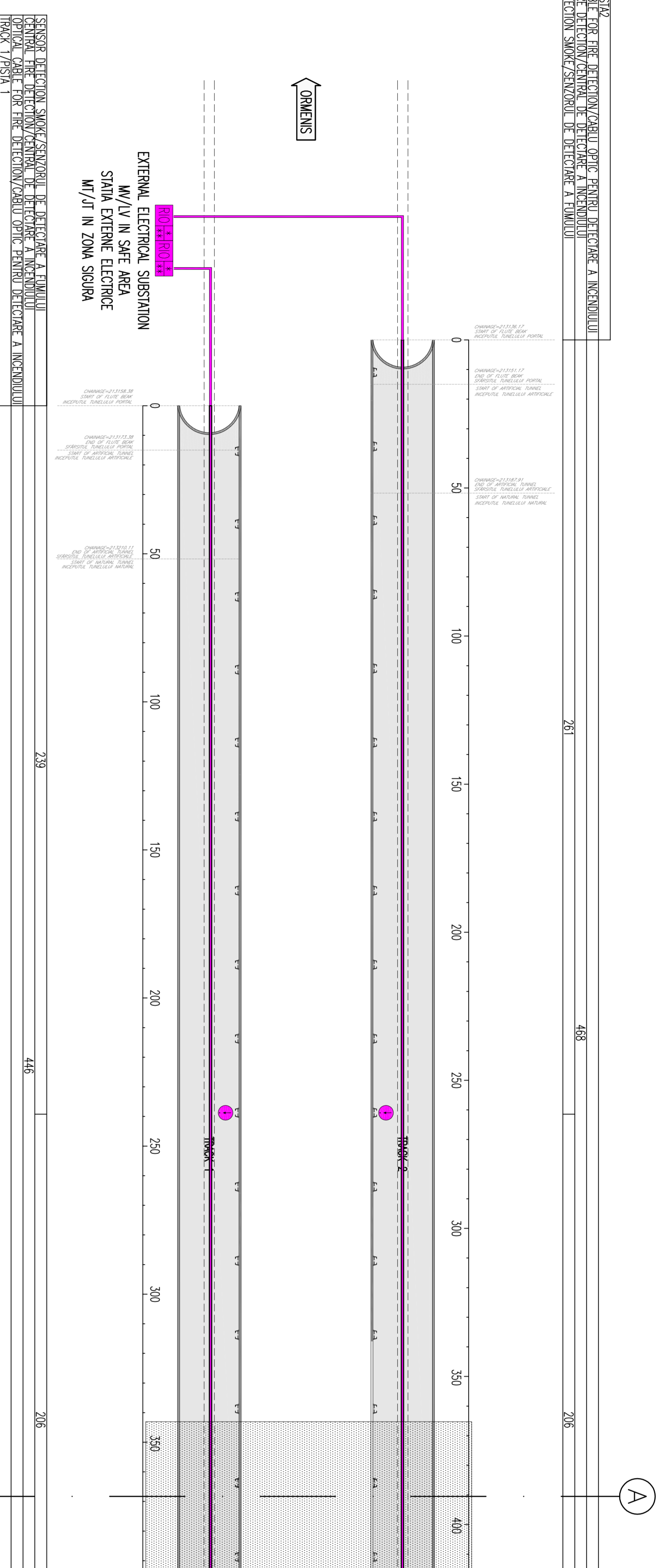
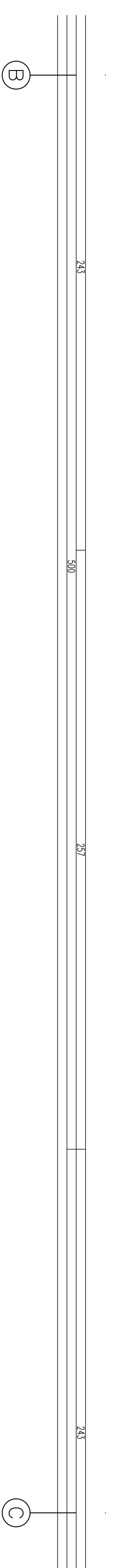
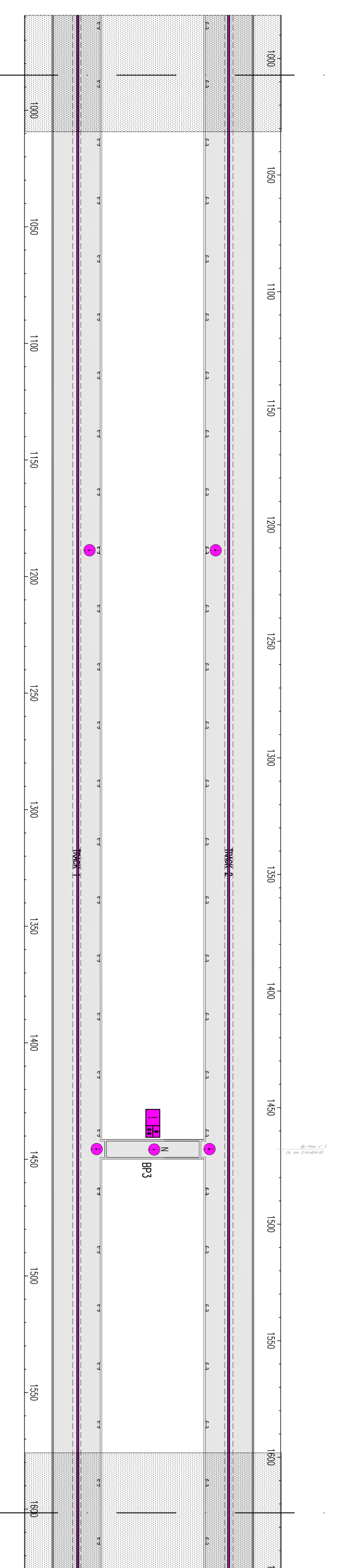
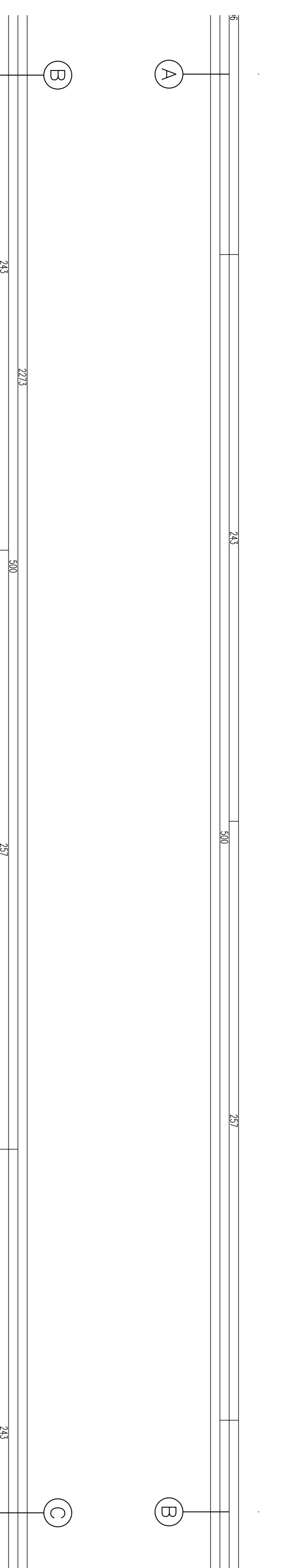
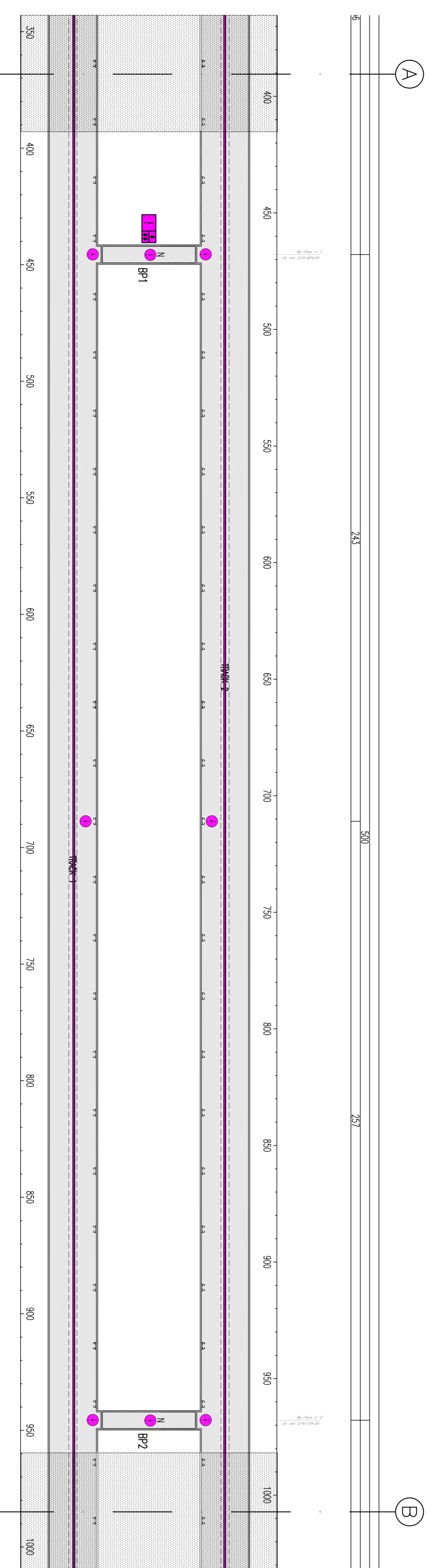


PROIECT DE DETALIIE PENTRU SISTEMUL DE DETECTARE A INCENDIULUI
 SCHEMA PLANULUI GENERAL AL ZONEI DE DETECTARE A INCENDIULUI

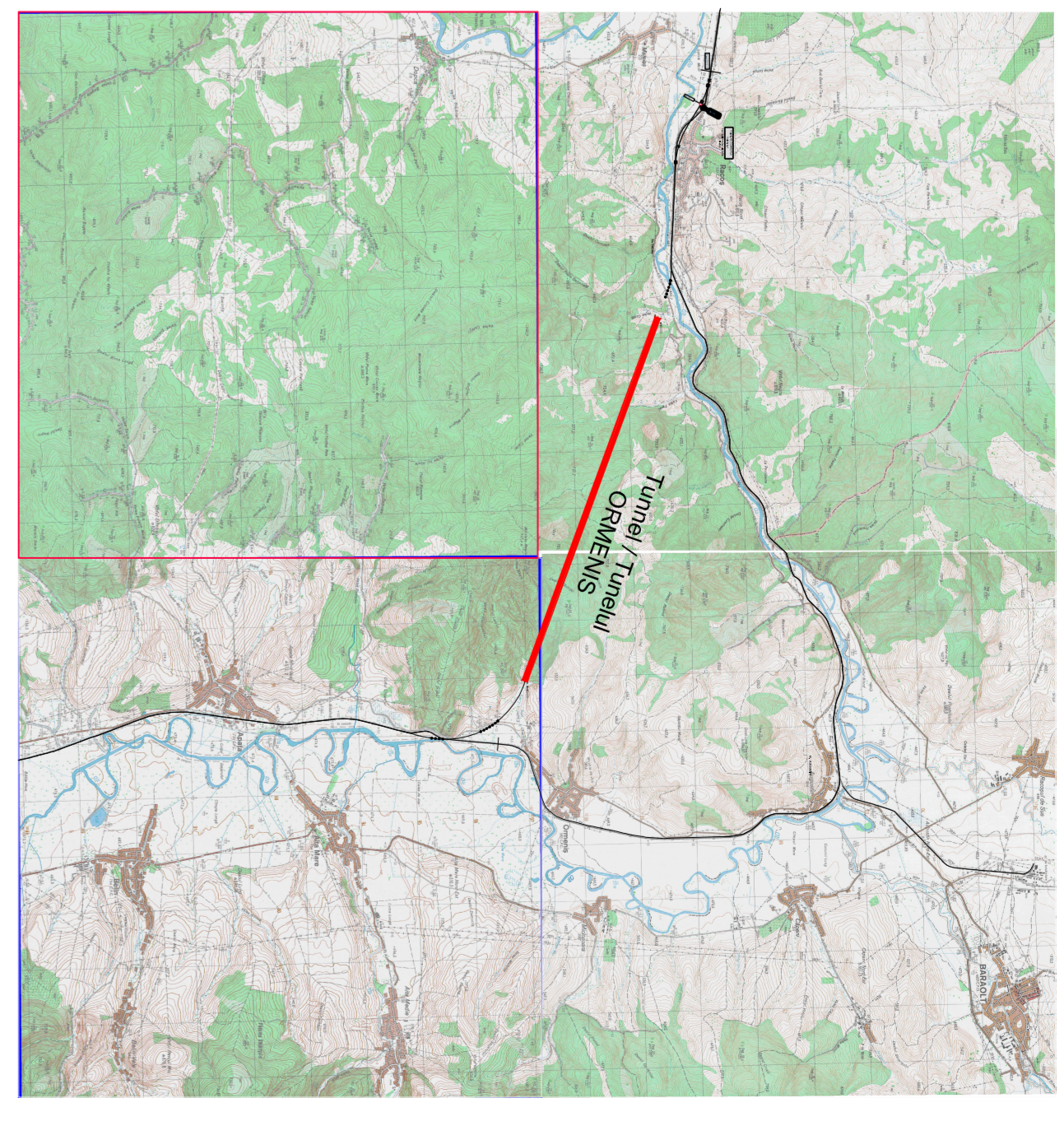


SYMBOLS LEGEND/LEGENDA SIMBOLURII

—	OPTICAL CABLE FOR FIRE DETECTION/CABLU OPTIC/PENTRU DETECTARE A INCENDIULUI
●	SENSOR DETECTION SMOKE/SENZOR DE DETECTARE A FUMULUI
■	ZONE FIRE DETECTION UNIT/SENZOR DE DETECTARE A INCENDIULUI A ZONA INCENDIULUI PENTRU CABLU OPTIC



GENERAL PLAN / PLANUL GENERAL



NOTE:
 - AREA SHOWN IN THE NEXT / PREVIOUS SHEET
 - ZONA PREZENTATA IN PACHETUL URMATOR / ANTERIORA

D					
C					
B					
A					

Date: _____
 Modificator/Modificatorii: _____
 Proiectant: _____
 Deseneator: _____
 Verificator/Verificatori: _____
 Autorizat/Authorizati: _____
 Aprobat/Approved: _____

CLIENT / CLIENT
 C.N.C.F. "C.F.R." - S.A.

CONSULTANT / CONSULTANT
 R. LUZZA
 C. GAMBELLI
 P. ANDOIO

SUBCONSULTANT / SUBCONSULTANT
 P. ANDOIO

GOVERNUL ROMANIEI
 ROMANIA GOVERNMENT
 PROIECT FINANAT DE UNIUNEA EUROPEANA
 SPRE PLANUL NATIONAL DE DEZVOLTARE

Reabilitarea liniei de cale ferata Buzov - Sarnata, partea componenta a coridorului IV Pan European, pe tronconul Sarnata - Sighisheara
 Rehabilitation of the railway line Buzov - Sarnata, component part of the IV Pan-European Corridor, for the train circulation with maximum speed of 160 km/h.
 Section I Buzov - Sighisheara

Denumire desen / Drawing Title: **TUNELUL UNELI ORMENIS**
 Project/Project: **ORMENIS**
 Faza / Phase: **P.11.1, T.1.**

Layer plus security system, fire detection system as stated, see also schedule.

Scale: 1:500
 Date: 12/2019
 L07
 1/1

Conditions / Conditii System: _____
 E A S I 0 1 C 1 0 L X T S 1 0 1 2 0 0 9 0 0